

Interagency Coordinating Council

January 20, 2021



south dakota
BIRTH TO THREE
The first three years build a lifetime

SD Birth to Three contributes to the success of children with developmental delays and their families by providing dynamic, individualized early intervention services and supports by building on family strengths through everyday routines and learning experiences.

Please feel free to turn your camera on.

Add your name in the chat box (we will use this for roll call).

**South Dakota
Birth to Three
STATE INTERAGENCY
COORDINATING COUNCIL
AGENDA**

Wednesday, January 20, 2021 | 3:00pm CT
Virtual Meeting: ZOOM (see below)

ICC Agenda

January 20, 2020

ICC PURPOSE:

To advise and assist the Lead Agency regarding services for infants and toddlers with developmental delays or disabilities and their families.

Agenda Item	Presenter	Documents
Call Meeting to Order	Chairperson – Valerie Kelly	
Approve Agenda	ICC Members	Agenda
Approval of Minutes	ICC Members	Meeting Minutes
Public Comment	If you are interested in providing public comment, please send notification to sarah.carter@state.sd.us or call (605)773.3678.	
Birth to Three Updates	Sarah Carter	<ul style="list-style-type: none"> • ICC Members • ICC Chair
Professional Development Updates	Dr. Jen Kampmann	
FFY2019 State Performance Plan	Steve Livermont	
2021 ICC Chair Election	ICC Members	
Next Meeting and Agenda Items	Sarah Carter	
Adjournment	ICC Members	

Join the Meeting:

One step process to join the meeting. Click on below link, select computer audio.

<https://us02web.zoom.us/j/6144283745?pwd=NGthK3crL3dCdWljB3O3eml1ZmYxUT09>

Meeting ID: 614 428 3745

Passcode: Carter

If computer not available, may also call into meeting. w

Phone Number: 1-312-626-6799 US

Meeting ID: 614 428 3745

Passcode: 760933

If you require a reasonable accommodation to participate in the meeting (e.g. sign language interpreter, materials in an alternative format), please submit your request in writing no later than 10 days prior to the meeting to ensure accommodations are available. Address requests to <mailto:Lindsey.Bomesberger@state.sd.us> or call 605-773-3678.

Public Comment

- ▶ Share your name and what you want us to know about you and why you are here.
- ▶ Provide your public comment please keeping your remarks to 3-4 minutes.
- ▶ Each speaker should represent new idea / concern / position.
- ▶ Thank you for your participation. The ICC appreciates your comments, and we will consider them as we continue our work.

Member	Representation
Carla Miller	SD Parent Connection
Carrie Churchill	Department Health
Cindy Fisher	OLC Head Start
Cindy Michelson	Parent
Dawn Smith	DOE – McKinny-Vento
Debra Willert	SPED Part B 619
Gretchen Brodkorb	Div. Insurance
Jaze Sollars	Human Services
Jodi Berscheid	HS Collaboration Office
Joe Hauge	Provider / BHSS
JoLynn Bostrom	DSS Foster Care/CAPTA
Jordan Mounga	Parent



Member	Representation
Katherine Schmidt	Parent
Katie Wiseman	Parent
Kirsten Duscheneaux	Provider
Laura Nordby	DSS Child Care/Mental Health
Leonard Suel	Provider
Mary Bowne	Program Prep (SDSU)
Melanie Lundquist	Provider
Michelle Martin	Provider
Rochelle Holloway	Parent
Sarah Carter	Early Intervention
Sen. Jim Bolin	Legislator
Valerie Kelly	DSS Medicaid

ICC Membership



Professional Development Updates

Bright Beginnings

COHORT 6

- 23 Participants
- 19 School Districts and 3 Coops Represented
- 203 Children Served
- Training through March 5
- Reliability Review March 5 – April 16

COHORT 7

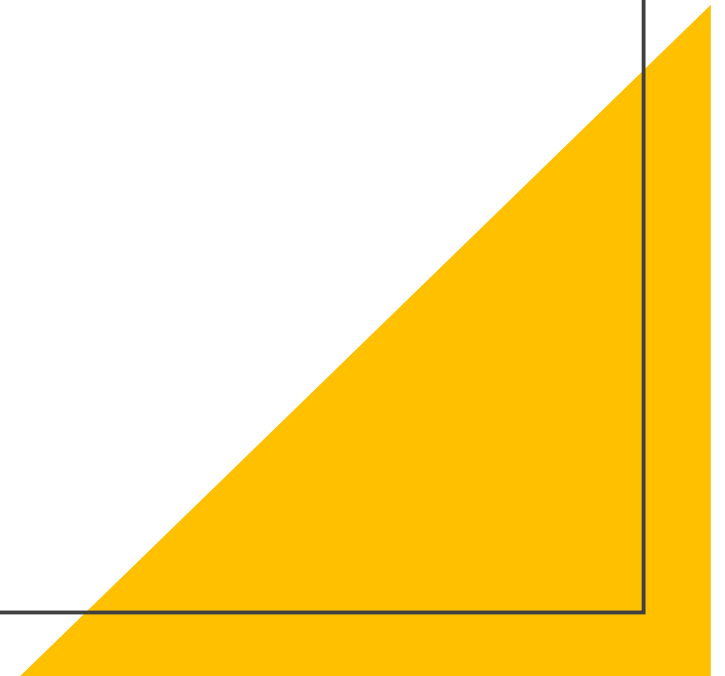
- Application opened January 4
- Application closes January 25
- Training Begins April 9
- Reliability Review September 7 – October 15
*2 week break over 4th of July

FFY2019
State
Performance
Plan / Annual
Performance
Report
(SPP/APR)

Reporting Period:

July 1, 2019 through June 30, 2020

Due: February 1, 2021



Part C Indicators

Part C SPP Indicators

1. **Timely Service Delivery.** % of infants/toddlers with IFSPs receiving EI services on their IFSPs in a timely manner.
2. **Settings.** % of infants/toddlers with IFSPs primarily receiving EI services in the home or community-based settings.
3. **Child Outcomes.** % of infants/toddlers with IFSPs demonstrating improved
(A) Positive social-emotional skills, (B) Acquisition and use of knowledge and skills, (C) Use of appropriate behaviors to meet their needs.
Summary Statement 1: % of infants/toddlers with substantial increase in rate of growth in each outcome by age 3 or exit, divided by all infants/toddlers who entered/exited EI below age level.
Summary Statement 2: % of infants/toddlers within age expectations in each outcome by age 3 or program exit.
4. **Family Outcomes.** % of families reporting that EI services helped the family
(A) Know their rights, (B) Effectively communicate child's needs, (C) Help their children develop and learn.
5. **Child Find, Ages Birth to 1.** % of infants/toddlers birth-1 with IFSPs compared to national data.
6. **Child Find, Ages Birth to 3.** % of infants and toddlers birth-3 with IFSPs compared to national data.
7. **Timeliness of IFSP.** % of eligible infants/toddlers with IFSPs with evaluation, assessment, and initial IFSP meeting, within 45-day timeline.
8. **Early Childhood Transition.** % of toddlers exiting Part C with timely transition planning for whom LA, within required timeline, (A) Developed IFSP with transition steps, (B) Notified SEA and LEA of toddler's potential eligibility, (C) Conducted transition conference.
9. **Hearing Requests Resolved.** % of hearing requests resolved through resolution session settlement agreements.
10. **Mediation Agreements.** % of mediations held resulting in mediation agreements.
11. **State Systemic Improvement Plan.** SPP/APR includes comprehensive, ambitious, achievable, multi-year SSIP, with Phase I analysis, Phase II plan, Phase III implementation and evaluation, with stakeholder involvement in all phases, for improving results for infants/toddlers with disabilities and their families.

Compliance Indicators (100%)

- C1 – Timely Services (30-day timeline)
- C7 – Timeliness of IFSP (45-day timeline)
- C8 – Transition from Early Intervention services

Results Indicators (Targets determined by State)

- C2 – Settings
- C3 – Child Outcomes
- C4 – Family Outcomes
- C5 – Child Find (Ages Birth to 1 year)
- C6 – Child Find (Ages Birth to 3 year)

Mediation Indicators

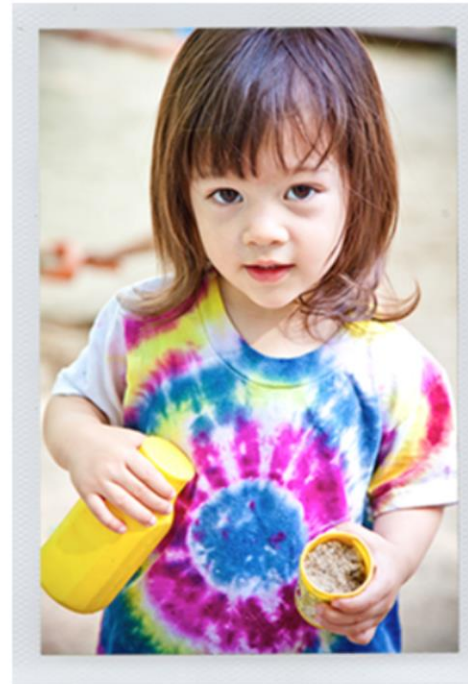
- C9 – Hearing Requests Resolved
- C10 - Mediation Agreements

Indicator C11 – State Systemic Improvement Plan (SSIP)

What is the SSIP?

Multi-year, achievable plan that:

- Increases capacity of EIS programs/LEAs to implement, scale up, and sustain evidence-based practices
- Improves outcomes for children with disabilities (and their families)



FFY2019 Annual Performance Report(APR)

-
- Data collection period of 7/1/19 to 6/30/20
 - Due to the Office of Special Education Programs (OSEP) February 1, 2021
 - December ICC meeting - Indicators C1, C2, C4, C5 & C6
 - Today - Indicators C3, C7, C8, C9, and C10

Indicator C7: Timeliness of IFSP (Reporting Quarter 10/1/2019 to 12/31/2019)

Percent of eligible infants and toddlers with IFSPs for whom an initial evaluation and initial assessment and an initial IFSP meeting were conducted within Part C's 45-day timeline.

Number of eligible infants and toddlers with IFSPs for whom an initial evaluation and assessment and an initial IFSP meeting was conducted within Part C's 45-day timeline	Number of eligible infants and toddlers evaluated and assessed for whom an initial IFSP meeting was required to be conducted	FFY 2018 Data	FFY 2019 Target	FFY 2019 Data	Status	Slippage
191	251	100.00%	100%	100.00%	Met Target	No Slippage

*60 documented delays attributable to Exceptional Family Circumstances

Indicator C7: Timeliness of IFSP Comparison reporting quarter to quarter during COVID-19

Pandemic

Percent of eligible infants and toddlers with IFSPs for whom an initial evaluation and initial assessment and an initial IFSP meeting were conducted within Part C's 45-day timeline.

	Reporting Period (10/1/2019 - 12/31/2019)	COVID Period (4/1/2020 – 6/30/2020)
# of Eligible Infants & Toddlers	251	98
# Met requirements	191	57
# Exceptional Family Circumstances	60	17 (11 COVID Related)
# Other	0	24 (24 COVID Related)
State Target Met	100% Yes	

Indicator C8: Transitions

The percentage of toddlers with disabilities exiting Part C with timely transition planning for whom the Lead Agency has:

- A. Developed an IFSP with transition steps and services at least 90 days, and at the discretion of all parties, not more than nine months, prior to the toddler's third birthday;
- B. Notified the SEA and the LEA where the toddler resides at least 90 days prior to the toddler's third birthday for toddlers potentially eligible for Part B preschool services; and
- C. Conducted the transition conference held with the approval of the family at least 90 days, and at the discretion of all parties, not more than nine months, prior to the toddler's third birthday for toddlers potentially eligible for Part B preschool services.

Indicator C8 (Reporting Quarter 10/1/2019 to 12/31/2019)

The percentage of toddlers with disabilities exiting Part C with timely transition planning for whom the Lead Agency has:

A. Developed an IFSP with transition steps and services at least 90 days, and at the discretion of all parties, not more than nine months, prior to the toddler's third birthday.

Number of children exiting Part C who have an IFSP with transition steps and services	Number of toddlers with disabilities exiting Part C	FFY 2018 Data	FFY 2019 Target	FFY 2019 Data	Status	Slippage
168	175	100.00%	100%	98.86%	Did Not Meet Target	Slippage

*5 documented delays attributable to exceptional family circumstances.

*2 documented delays missed the transition timeline.

Slippage = Worsening from the previous data AND failure to meet the target

Indicator C8 Comparison reporting quarter to quarter during COVID-19 Pandemic

The percentage of toddlers with disabilities exiting Part C with timely transition planning for whom the Lead Agency has:

A. Developed an IFSP with transition steps and services at least 90 days, and at the discretion of all parties, not more than nine months, prior to the toddler's third birthday.

	Reporting Period (10/1/2019 - 12/31/2019)	COVID Period (4/1/2020 – 6/30/2020)
# of Eligible Infants & Toddlers	175	159
# Met requirements	168	153
# Exceptional Family Circumstances	5	5
# Other	2	1 (not COVID related)
State Target Met	98.86% NO	

Indicator C8 (Reporting Quarter 10/1/2019 to 12/31/2019)

The percentage of toddlers with disabilities exiting Part C with timely transition planning for whom the Lead Agency has:

B. Notified the SEA and the LEA where the toddler resides at least 90 days prior to the toddler's third birthday.

Number of toddlers with disabilities exiting Part C where notification to the SEA and LEA occurred at least 90 days prior to their third birthday for toddlers potentially eligible for Part B preschool services	Number of toddlers with disabilities exiting Part C who were potentially eligible for Part B	FFY 2018 Data	FFY 2019 Target	FFY 2019 Data	Status	Slippage
175	175	100.00%	100%	100.00%	Met Target	No Slippage

*0 documented delays attributable to exceptional family circumstances.

Indicator C8 Comparison reporting quarter to quarter during COVID-19 Pandemic

The percentage of toddlers with disabilities exiting Part C with timely transition planning for whom the Lead Agency has:

B. Notified the SEA and the LEA where the toddler resides at least 90 days prior to the toddler's third birthday.

	Reporting Period (10/1/2019 - 12/31/2019)	COVID Period (4/1/2020 – 6/30/2020)
# of Eligible Infants & Toddlers	175	159
# Met requirements	175	159
# Exceptional Family Circumstances	0	0
# Other	0	0
State Target Met	100% YES	

Indicator C8

The percentage of toddlers with disabilities exiting Part C with timely transition planning for whom the Lead Agency has:

C. Conducted the transition conference held with the approval of the family at least 90 days, and at the discretion of all parties, not more than nine months, prior to the toddler's third birthday for toddlers potentially eligible for Part B preschool services.

Number of toddlers with disabilities exiting Part C where the transition conference occurred at least 90 days, and at the discretion of all parties not more than nine months prior to the toddler's third birthday for toddlers potentially eligible for Part B	Number of toddlers with disabilities exiting Part C who were potentially eligible for Part B	FFY 2018 Data	FFY 2019 Target	FFY 2019 Data	Status	Slippage
168	175	100.00%	100%	98.86%	Did Not Meet Target	Slippage

*5 documented delays attributable to exceptional family circumstances.

*2 documented delays missed the transition timeline.

Slippage = Worsening from the previous data AND failure to meet the target

Indicator C8 Comparison reporting quarter to quarter during COVID-19 Pandemic

The percentage of toddlers with disabilities exiting Part C with timely transition planning for whom the Lead Agency has:

C. Conducted the transition conference held with the approval of the family at least 90 days, and at the discretion of all parties, not more than nine months, prior to the toddler's third birthday for toddlers potentially eligible for Part B preschool services.

	Reporting Period (10/1/2019 - 12/31/2019)	COVID Period (4/1/2020 – 6/30/2020)
# of Eligible Infants & Toddlers	175	159
# Met requirements	168	153
# Exceptional Family Circumstances	5	5
# Other	2	1 (Not COVID Related)
State Target Met	98.86% NO	

Indicator C9

Percent of hearing requests that went to resolution sessions that were resolved through resolution session settlement agreements

✓ South Dakota did not have any Resolution Sessions.

Indicator C10

Percent of mediations held that resulted in mediation agreements.

- ✓ South Dakota did not have any Mediation Agreements

COVID Challenges Now and Future

- ▶ Evaluations
 - ▶ Eligibility / Initial
 - ▶ Interim
 - ▶ Exit
- ▶ Make-up / Compensatory Services
- ▶ OSEP Determinations
 - ▶ Child Outcomes
 - ▶ BDI Completion Rate
 - ▶ Child Count
- ▶ Future Target Setting
- ▶ Unknowns!

Indicator C3: Early Childhood Outcomes

Percent of infants and toddlers with IFSPs who demonstrate improved:

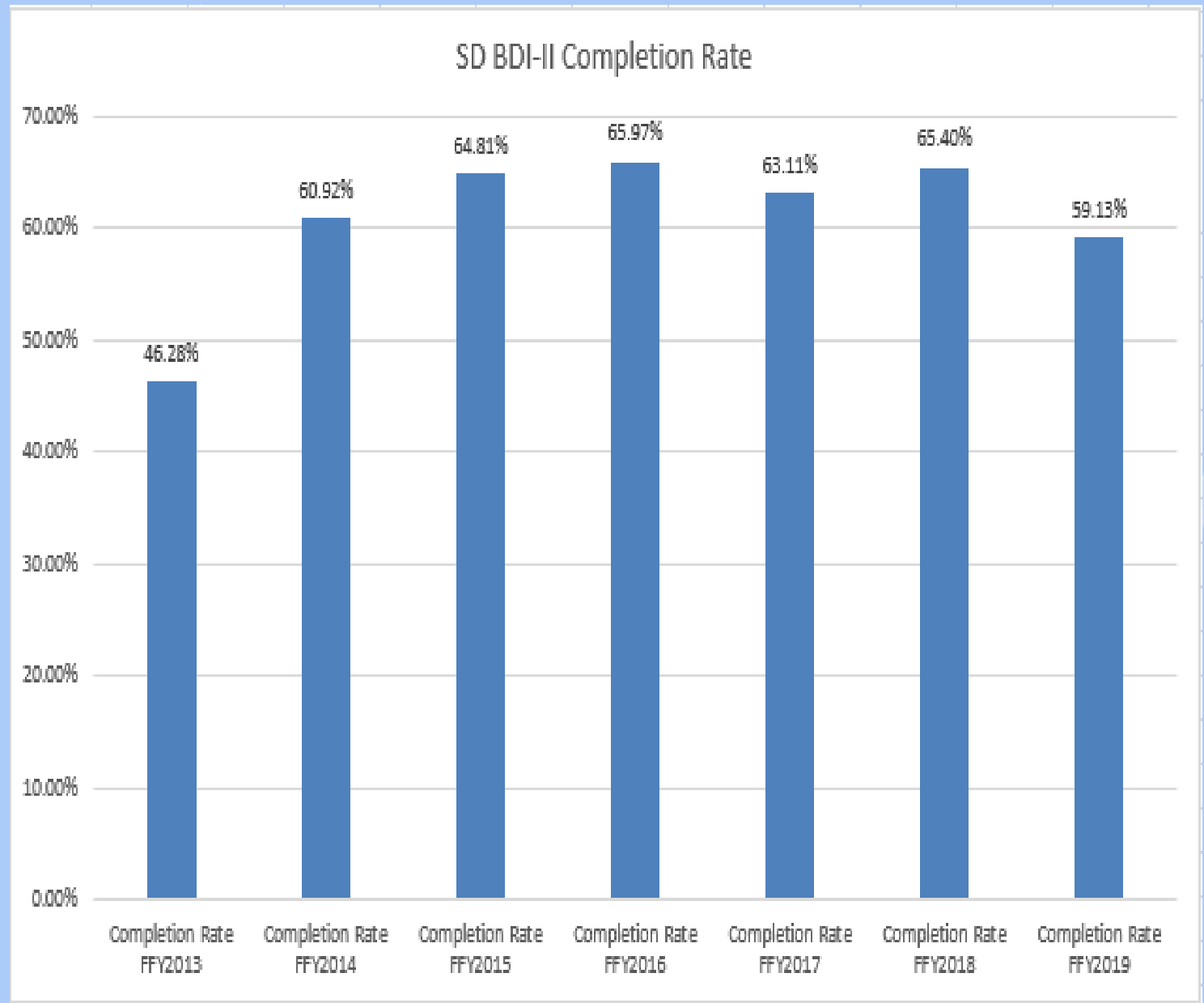
A. Positive social-emotional skills (including social relationships);

B. Acquisition and use of knowledge and skills (including early language/ communication); and

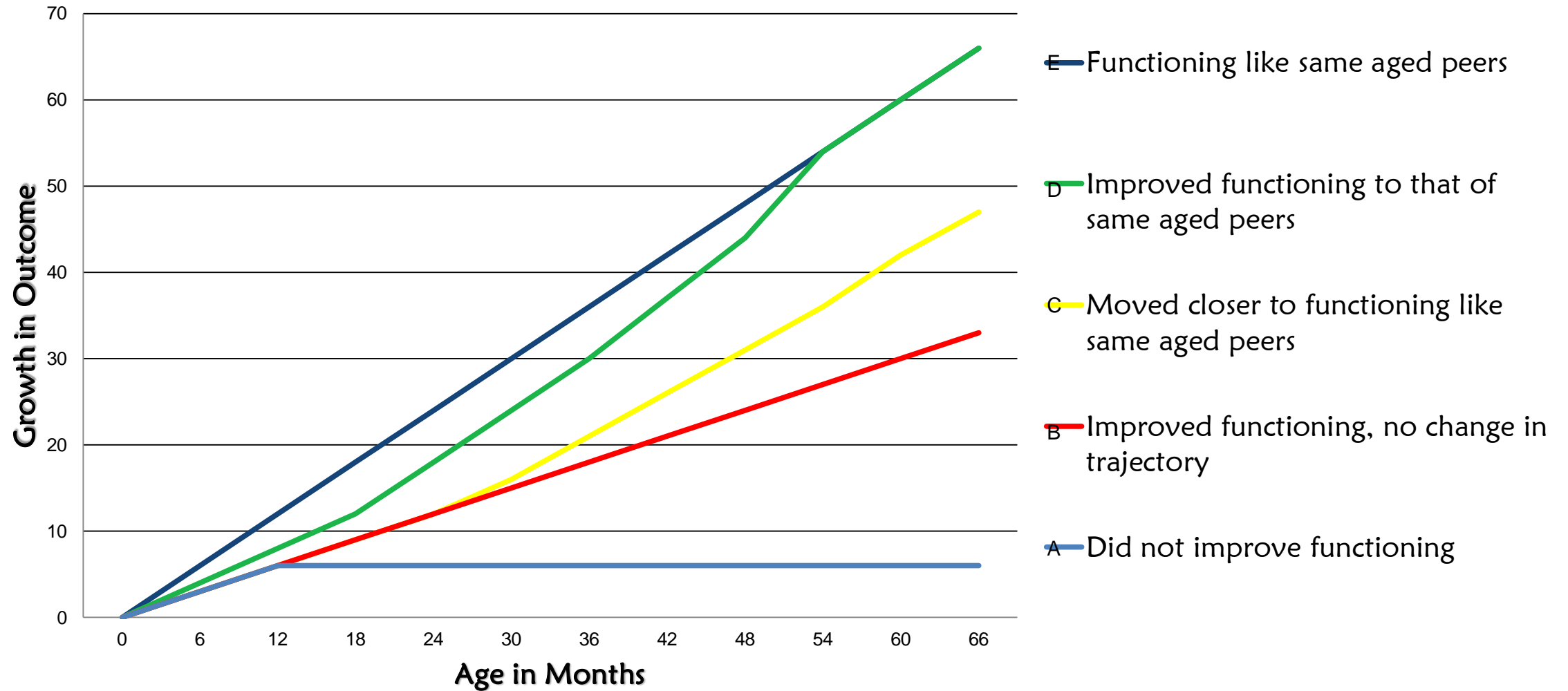
C. Use of appropriate behaviors to meet their needs

Completion Rates

*Children with entry and exit BDI



Developmental Trajectories



	Social Emotional Skills		Acquiring and Using Knowledge and Skills		Taking Appropriate Action to Meet Needs	
	Enter # of Children	% of Children	Enter # of Children	% of Children	Enter # of Children	% of Children
a. Children who did not improve functioning						
b. Children who improved functioning but not sufficient to move nearer to functioning comparable to same age peers						
c. Children who improved functioning to a level nearer to same-aged peers but did not reach it						
d. Children who improved functioning to reach a level comparable to same-aged peers						
e. Children who maintained functioning at a level comparable to same-aged peers						
TOTAL						
SUMMARY STATEMENTS						
1. Of those children who entered the program below age expectations in [outcome], the percent that substantially increased their rate of growth in [outcome] by the time they exited.						
2. Percent of children who were functioning within age expectations in						

OSEP ECO
Calculator

$$\text{Summary Statement 1} = (c+d) / (a+b+c+d)$$

$$\text{Summary Statement 2} = (d+e) / (a+b+c+d+e)$$

Indicator C3:

Percent of infants and toddlers with IFSPs who demonstrate improved:
A. Positive social-emotional skills (including social relationships);

Outcome A: Positive social-emotional skills (including social relationships)

Outcome A Progress Category	Number of children	Percentage of Total
a. Infants and toddlers who did not improve functioning	4	0.66%
b. Infants and toddlers who improved functioning but not sufficient to move nearer to functioning comparable to same-aged peers	143	23.48%
c. Infants and toddlers who improved functioning to a level nearer to same-aged peers but did not reach it	15	2.46%
d. Infants and toddlers who improved functioning to reach a level comparable to same-aged peers	95	15.60%
e. Infants and toddlers who maintained functioning at a level comparable to same-aged peers	352	57.80%

Outcome A	Numerator	Denominator	FFY 2018 Data	FFY 2019 Target	FFY 2019 Data	Status	Slippage
A1. Of those children who entered or exited the program below age expectations in Outcome A, the percent who substantially increased their rate of growth by the time they turned 3 years of age or exited the program	110	257	37.83%	51.00%	42.80%	Did Not Meet Target	No Slippage
A2. The percent of infants and toddlers who were functioning within age expectations in Outcome A by the time they turned 3 years of age or exited the program	447	609	75.77%	85.50%	73.40%	Did Not Meet Target	Slippage

Slippage = Worsening from the previous data AND failure to meet the target

Indicator C3:

Percent of infants and toddlers with IFSPs who demonstrate improved:

B. Acquisition and use of knowledge and skills (including early language / communication);

Outcome B: Acquisition and use of knowledge and skills (including early language/communication)

Outcome B Progress Category	Number of Children	Percentage of Total
a. Infants and toddlers who did not improve functioning	1	0.16%
b. Infants and toddlers who improved functioning but not sufficient to move nearer to functioning comparable to same-aged peers	119	19.54%
c. Infants and toddlers who improved functioning to a level nearer to same-aged peers but did not reach it	165	27.09%
d. Infants and toddlers who improved functioning to reach a level comparable to same-aged peers	183	30.05%
e. Infants and toddlers who maintained functioning at a level comparable to same-aged peers	141	23.15%

Outcome B	Numerator	Denominator	FFY 2018 Data	FFY 2019 Target	FFY 2019 Data	Status	Slippage
B1. Of those children who entered or exited the program below age expectations in Outcome B, the percent who substantially increased their rate of growth by the time they turned 3 years of age or exited the program	348	468	74.91%	60.00%	74.36%	Met Target	No Slippage
B2. The percent of infants and toddlers who were functioning within age expectations in Outcome B by the time they turned 3 years of age or exited the program	324	609	57.92%	70.00%	53.20%	Did Not Meet Target	Slippage

Slippage = Worsening from the previous data AND failure to meet the target

Indicator C3

Percent of infants and toddlers with IFSPs who demonstrate improved:
C. Use of appropriate behaviors to meet their needs.

Outcome C: Use of appropriate behaviors to meet their needs

Outcome C Progress Category	Number of Children	Percentage of Total
a. Infants and toddlers who did not improve functioning	0	0.00%
b. Infants and toddlers who improved functioning but not sufficient to move nearer to functioning comparable to same-aged peers	27	4.43%
c. Infants and toddlers who improved functioning to a level nearer to same-aged peers but did not reach it	94	15.44%
d. Infants and toddlers who improved functioning to reach a level comparable to same-aged peers	180	29.56%
e. Infants and toddlers who maintained functioning at a level comparable to same-aged peers	308	50.57%

Outcome C	Numerator	Denominator	FFY 2018 Data	FFY 2019 Target	FFY 2019 Data	Status	Slippage
C1. Of those children who entered or exited the program below age expectations in Outcome C, the percent who substantially increased their rate of growth by the time they turned 3 years of age or exited the program	274	301	90.93%	60.00%	91.03%	Met Target	No Slippage
C2. The percent of infants and toddlers who were functioning within age expectations in Outcome C by the time they turned 3 years of age or exited the program	488	609	80.29%	85.00%	80.13%	Did Not Meet Target	No Slippage

Slippage Occurred in:

Summary Statement	Outcome	FFY2019
Summary Statement 1 *% who entered below and substantially increased their rate of growth by time turned 3 or exited.	Outcome A. Positive Social Relationships	No Slippage
	Outcome B. Knowledge and Skills	No Slippage
	Outcome C. Actions to Meet Needs	No Slippage
Summary Statement 2 *% functioning within age expectations by time turned 3 or exited.	Outcome A. Positive Social Relationships	Slippage
	Outcome B. Knowledge and Skills	Slippage
	Outcome C. Actions to Meet Needs	No Slippage

Slippage = Worsening from the previous data AND failure to meet the target

Meaningful Difference Calculator

		Previous FFY			Current FFY			
	Child Outcome	The number of children the summary statement is based on	Summary Statement	Confidence interval Previous FFY Summary Statement	The number of children the summary statement is based on	Summary Statement	Confidence interval Current FFY Summary Statement	Meaningful difference ?
Summary Statement 1	Outcome A: Positive Social Relationships	751	38%	± 2.91%	609	43%	± 3.3%	Yes
	Outcome B: Knowledge and Skills	751	75%	± 2.6%	609	74%	± 2.91%	No
	Outcome C: Actions to meet needs	751	91%	± 1.73%	609	91%	± 1.92%	No
Summary Statement 2	Outcome A: Positive Social Relationships	751	76%	± 2.57%	609	73%	± 2.94%	No
	Outcome B: Knowledge and Skills	751	58%	± 2.96%	609	53%	± 3.32%	Yes
	Outcome C: Actions to meet needs	751	80%	± 2.39%	609	80%	± 2.66%	No
							Yes = decrease in percentage	
							Yes = increase in percentage	



Comparison

FFY2018 State

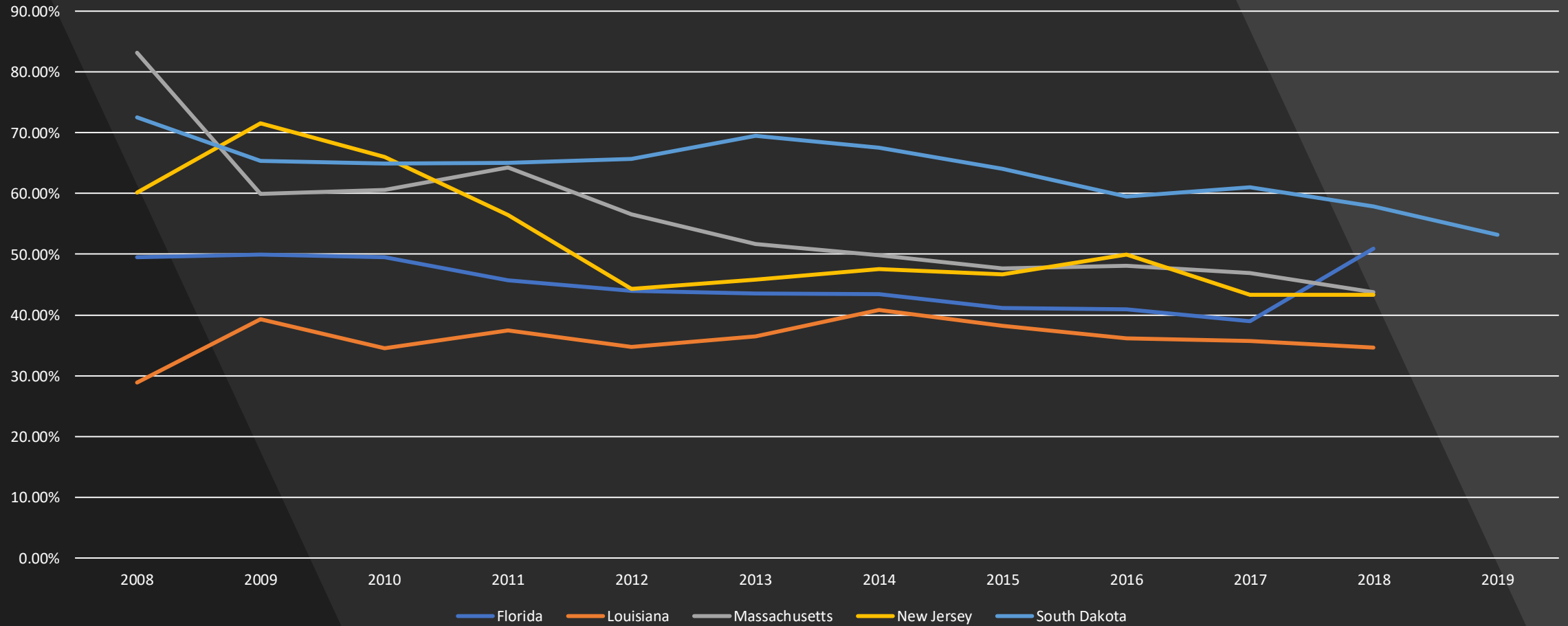
	Social Emotional Skills		Acquiring and Using Knowledge and Skills		Taking Appropriate Action to Meet Needs	
	Enter # of Children	% of Children	Enter # of Children	% of Children	Enter # of Children	% of Children
a. Children who did not improve functioning	1	0.1%	1	0.1%	0	0.0%
b. Children who improved functioning but not sufficient to move nearer to functioning comparable to same age peers	165	22.0%	138	18.4%	33	4.4%
c. Children who improved functioning to a level nearer to same-aged peers but did not reach it	16	2.1%	177	23.6%	115	15.3%
d. Children who improved functioning to reach a level comparable to same-aged peers	85	11.3%	238	31.7%	216	28.8%
e. Children who maintained functioning at a level comparable to same-aged peers	484	64.4%	197	26.2%	387	51.5%
TOTAL	751	100.0%	751	100.0%	751	100.0%
SUMMARY STATEMENTS						
1. Of those children who entered the program below age expectations in [outcome], the percent that substantially increased their rate of growth in [outcome] by the time they exited.		37.8%		74.9%		90.9%
2. Percent of children who were functioning within age expectations in [outcome], by the time they exited.		75.8%		57.9%		80.3%

FFY2019 State

	Social Emotional Skills		Acquiring and Using Knowledge and Skills		Taking Appropriate Action to Meet Needs	
	Enter # of Children	% of Children	Enter # of Children	% of Children	Enter # of Children	% of Children
a. Children who did not improve functioning	4	0.7%	1	0.2%	0	0.0%
b. Children who improved functioning but not sufficient to move nearer to functioning comparable to same age peers	143	23.5%	119	19.5%	27	4.4%
c. Children who improved functioning to a level nearer to same-aged peers but did not reach it	15	2.5%	165	27.1%	94	15.4%
d. Children who improved functioning to reach a level comparable to same-aged peers	95	15.6%	183	30.0%	180	29.6%
e. Children who maintained functioning at a level comparable to same-aged peers	352	57.8%	141	23.2%	308	50.6%
TOTAL	609	100.0%	609	100.0%	609	100.0%
SUMMARY STATEMENTS						
1. Of those children who entered the program below age expectations in [outcome], the percent that substantially increased their rate of growth in [outcome] by the time they exited.		42.8%		74.4%		91.0%
2. Percent of children who were functioning within age expectations in [outcome], by the time they exited.		73.4%		53.2%		80.1%

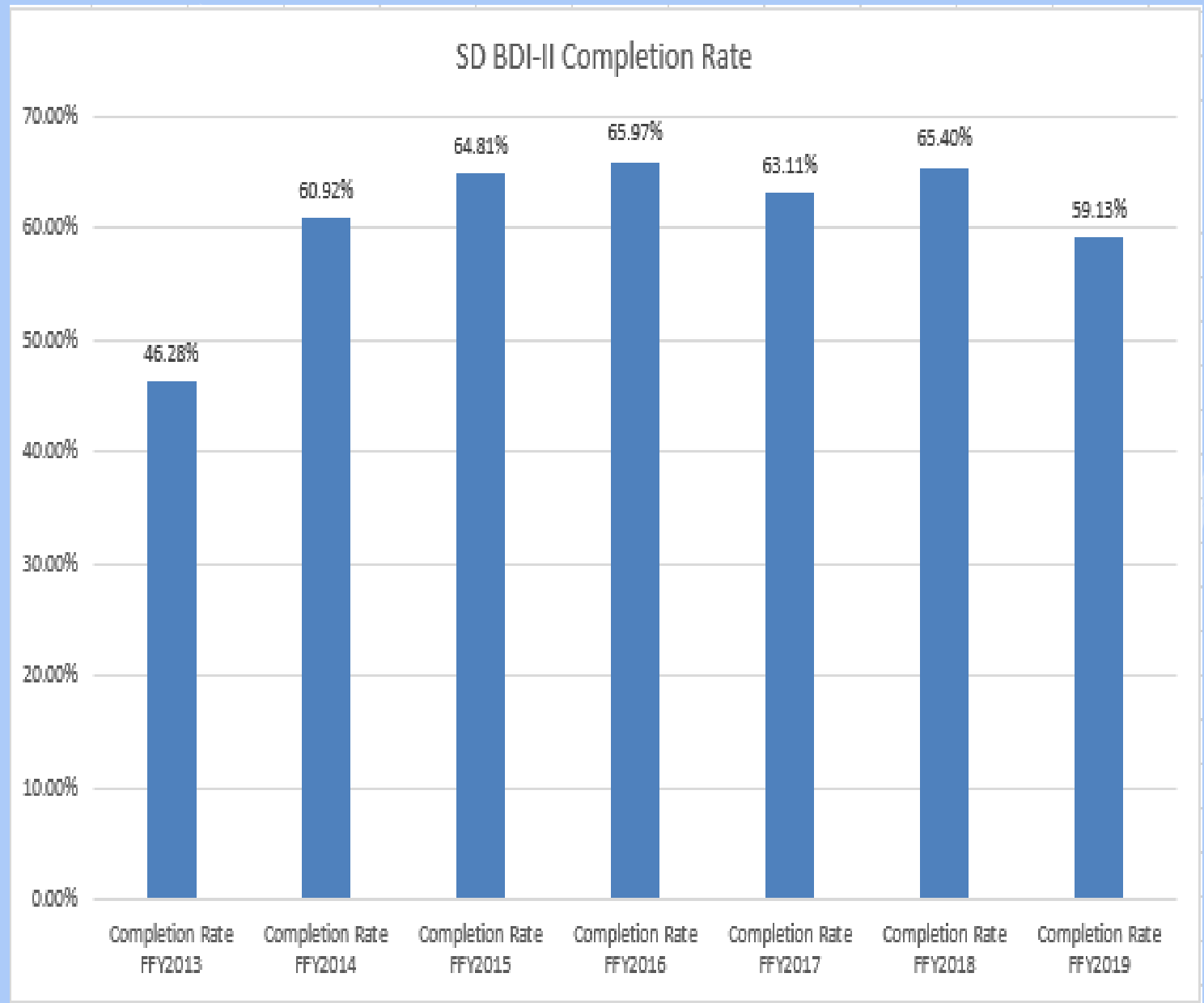
SD Compared to Other BDI States

Outcome A, SS2



Completion Rates

*Children with entry and exit BDI





ICC 2021 Chair Election

Next Meeting April

Date Contingent on OSEP

Release of 2021 Grant Application

ICC Agenda

December 9, 2020



South Dakota Birth to Three STATE INTERAGENCY COORDINATING COUNCIL AGENDA

Wednesday, January 20, 2021 | 3:00pm CT
Virtual Meeting: ZOOM (see below)

ICC PURPOSE:

To advise and assist the Lead Agency regarding services for infants and toddlers with developmental delays or disabilities and their families.

Agenda Item	Presenter	Documents
Call Meeting to Order	Chairperson – Valerie Kelly	
Approve Agenda	ICC Members	Agenda
Approval of Minutes	ICC Members	Meeting Minutes
Public Comment	If you are interested in providing public comment, please send notification to sarah.carter@state.sd.us or call (605)773.3678	
Birth to Three Updates	Sarah Carter	<ul style="list-style-type: none">• ICC Members• ICC Chair
Professional Development Updates	Dr. Jen Kampmann	
FFY2019 State Performance Plan	Steve Livermont	
2021 ICC Chair Election	ICC Members	
Next Meeting and Agenda Items	Sarah Carter	
Adjournment	ICC Members	

Join the Meeting:

One step process to join the meeting. Click on below link, select computer audio.

<https://us02web.zoom.us/j/6144283745?pwd=NChk3crl3dCdWjB3O3emJzMyxUT09>

Meeting ID: 614 428 3745

Passcode: Carter

If computer not available, may also call into meeting. w

Phone Number: 1-312-626-6799 US

Meeting ID: 614 428 3745

Passcode: 760933

If you require a reasonable accommodation to participate in the meeting (e.g. sign language interpreter, materials in an alternative format), please submit your request in writing no later than 10 days prior to the meeting to ensure accommodations are available. Address requests to <mailto:Lindsey.Bomesberger@state.sd.us> or call 605-773-3678.