

SOUTH DAKOTA BOARD OF SOCIAL SERVICES

Meeting Agenda

Tuesday, April 19, 2022

1:30 pm – 4:00 pm CT

Kneip Building, 1st Floor, Conference Room #3

700 Governors Drive, Pierre, SD 57501

Join Zoom Meeting

To Join by Video

<https://state-sd.zoom.us/j/95191696675?pwd=bS82MmxNZmVmQU1uUVZkQ1NxRG01dz09>

Meeting ID: 951 9169 6675

Passcode: 773361

Join by Audio Only

1.312.626.6799

Use Meeting ID and Passcode Above

-
1. Call to Order and Declaration of Quorum
 2. Introductions and Welcome New Members
 3. Election of Board President
 4. Adoption of Agenda
 5. Approval of Minutes from October 19, 2021 Board Meeting
 6. Legislative Updates – Laurie Gill
 - Provider Inflation – 6%
 - Commission on Child Support – Virgena Wieseler
 - HB 1278 – Revisions to the child support obligation schedule
 - HB 1279 – Revisions to align with federal requirements
 - Federal Pandemic Funding – Brenda Tidball-Zeltinger/Tiffany Wolfgang
 - Economic Assistance Programs
 - Child Protection
 - Child Care
 - Human Services Center
 - Community Behavioral Health
 - Appropriate Regional Facility Expansion
 - One-time Enhanced Home and Community Based Services Payments
 - Other
 - HB 1133 – Funding for home studies for private adoptions – Virgena Wieseler
 - SB 174 – One-time funding for construction of a facility to provide specialty rehabilitation, intermediate care facility, and outpatient rehabilitation hospital – Laurie Gill
 - SB 196 – One-time funding for grants to certain residential alternative care programs – Tiffany Wolfgang

7. Behavioral Health – Tiffany Wolfgang
 - Update on the Behavioral Health Awareness Campaign
 - Suicide Prevention Update/988 Implementation
 - Prevention Strategic Planning Work Order
 - WICHE Strategic Goals – Jeremy Johnson
8. CHART Model – Transformation Plan – Sarah Aker
9. Weatherization State Plan – Dave Gall
10. Board Discussion
 - Future Agenda Items
 - Areas of Focus
11. Public Comment
12. Establish Next Meeting Date
13. Adjourn

SOUTH DAKOTA BOARD OF SOCIAL SERVICES

Meeting Minutes

Tuesday, October 19, 2021

1:30 pm – 4:00 pm CT

Kneip Building, 1st Floor, Conference Room #3

700 Governors Drive, Pierre, SD 57501

Join Zoom Meeting

To Join by Video

<https://state-sd.zoom.us/j/95011899710?pwd=NlIPQ0JzRFhzSUu0QTA1VzJlEVVWZDZ09>

Meeting ID: 950 1189 9710

Passcode: 834177

Join by Audio Only

1.312.626.6799

Use Meeting ID and Passcode Above

Board Members Present: Hugh Grogan, Holly Bodenstedt, and Cecelia Fire Thunder present via Zoom. Colleen Winter and Sandy Diegel present in person.

Board Members Absent: Linda Wordeman.

Others Present: Laurie Gill, Department of Social Services (DSS) Cabinet Secretary; Brenda Tidball-Zeltinger, Deputy Secretary and Chief of Operations; Tiffany Wolfgang, Director of Behavioral Health; Laura Ringling, Chief of Behavioral Health; Virgena Wieseler, Chief of Children and Family Services; and Marilyn Kinsman, Senior Policy Analyst.

Call to Order and Declaration of Quorum: Hugh Grogan called the meeting to order at 1:34 PM (CT) and determined a quorum. As the newest Board member, Sandy Diegel introduced herself and was welcomed to the Board.

Adoption of Agenda: Motion to approve revised agenda by Colleen Winter, seconded by Holly Bodenstedt. The Board voted by roll call. Grogan, Bodenstedt, Fire Thunder, Winter, and Diegel voted aye. Motion carried.

Approval of Minutes from April 20, 2021 Board Meeting: Motion to approve the April 20, 2021 meeting minutes by Colleen Winter, seconded by Holly Bodenstedt. The Board voted by roll call. Grogan, Bodenstedt, Fire Thunder, Winter, and Diegel voted aye. Motion carried.

Behavioral Health – Tiffany Wolfgang, Director of Behavioral Health, led discussion of the Division of Behavioral Health topics regarding suicide prevention efforts, 988 planning, and the Behavioral Health Voucher Program, and Laura Ringling, Chief of Behavioral Health, presented information about the Human Services Center (HSC) operations and program analysis.

- **Suicide Prevention Efforts:** Tiffany reminded Board members about suicide prevention efforts the Department of Social Services has been involved in. Partners include the Department of Tribal Relations; the Department of Health as the lead for data and report contacts; the Department of Education; and the Department of Social Services as the lead for training, prevention, and intervention. The SDSuicidePrevention.org website was designed as a one stop shop to help lay persons and professionals find meaningful and useful information regarding suicide prevention. Department of Health facts and stats are available on the website. Statistics can be found by county, race, means of suicide, etc. South Dakota had the 8th highest suicide rate in the United States in 2019. In 2020, suicide was the 10th leading cause of death in South Dakota, but was the leading cause among ages 10-19. Efforts must continue to focus around suicide prevention. Four South Dakota counties had the highest percentage of suicides in the nation including Corson, Todd, Oglala

Lakota, and Dewey counties. It is important to promote the suicide prevention website and keep information updated to remain relevant. In August 2021, 1,567 unique individuals visited the website and viewed 4,040 pages. In September 2021, 4,518 individuals had visited the website and viewed over 9,000 pages. There has been a concerted effort to raise awareness about suicide prevention through Cabinet Secretary Gill and media initiatives. Four awareness campaigns have been created to finetune messaging to target populations. The goal of *Bethe1SD* is to spread the word about actions that can be taken to prevent suicide. Promotional press releases were done to provide awareness during September for suicide awareness month. *Reach for Life* was created to promote the crisis line in Indian Country and was created in the colors of the culture. *Safe Space* was created as LGBTQ individuals are generally thought to be at a high risk for suicidal behavior. *Every Member Counts* focuses on the Veteran population as the number of deaths by suicide has continued to rise at an alarming rate. To make individuals aware of campaigns, toolkits have been made available on the suicide prevention website, free of charge. Schools are able to request toolkits that may include bracelets, pens, brochures, back packs, etc. To date, 95 *Bethe1SD* tool kits and 72 *Reach for Life* tool kits have been requested this year. Several Suicide Prevention and Mental Health Promotion Trainings have been held including NAMI Ending the Silence (ETS); Mental Health First Aid (MHFA); Youth Mental Health First Aid (YMHFA); Applied Suicide Intervention Skills Training (ASIST); and Question, Persuade, Refer (QPR). ETS teaches education about the warning signs of mental health conditions and steps to take if someone is showing symptoms of a mental health condition. Tiffany encouraged everyone to take the MHFA and YMHFA trainings, comparing them to the critical need for cardiopulmonary resuscitation (CPR) trainings. MHFA teaches the general public about how to help someone who is developing a mental health problem or experiencing a mental health crisis. YMHFA reviews risk factors and warning signs of mental health problems in adolescents ages 12-18 and how to help an adolescent experiencing a mental health challenge. ASIST is for individuals who want to feel more comfortable, confident, and competent in helping to prevent the immediate risk of suicide. Professionals often receive the ASIST training. QPR teaches three steps to help save a life from suicide. All trainings are available free of charge. In FY 2021, the Division of Behavioral Health supported 29 trainings and 600 participants. The goal is to increase trainings in FY 2022, and to date, 17 trainings have already occurred and 200 individuals have been trained. Members are encouraged to log on to sdsuicideprevention.org and sign up for the quarterly newsletters and view the resources and campaigns that are available on the website. The Department of Tribal Relations and Great Plains Tribal Leaders Health Board are partners. Campaign responses have been very positive. The Division of Behavioral Health has requested a booth at the upcoming Lakota Nation event in Rapid City. The Departments of Social Services; Health; and Tribal Relations formed an interagency workgroup and conducts monthly data reviews, using the data now, to take action. A pilot program includes six counties. Outreach is to evaluate data, trends and themes; provide technical assistance and resources; and identify intermediate and long-term supports. Cecelia Fire Thunder suggested to make it easier to recognize when people need help by reframing how we say it (suicide, mental health), to make it meaningful. Tiffany stated the Department relies on our Tribal partners to ensure messaging is appropriate.

- **988 Planning Grant:** In July 2022, through Congressional action, 988 will replace the current Suicide Prevention Crisis Hotline, 1.800.273.TALK(8255) number. A grant was awarded in the amount of \$130,000.00 and granted for the period of February 1, 2021 through January 31, 2022. Partners in the 988 State Planning Grant efforts include members of the Behavioral Health Crisis Stakeholder Coalition. The Coalition is comprised of representation from the state's only Lifeline member (Helpline Center); state suicide prevention coordinators from the Department of Health and Department of Social Services; representatives from mobile crisis providers from the largest community in South Dakota as well as from a midsized, rural community; representation from crisis systems serving individuals in a behavioral health crisis; representatives from law enforcement; statewide 911 representative; representation from the publicly funded community mental health and substance use provider system; representatives from psychiatric inpatient providers; tribal representatives; peer based organization, and individuals with lived experience of suicide loss and attempt. The Department wants 988 to be recognized like 911. Trained counselors are available to

assist callers 24/7, 365 days a year. A question was asked how many people call the hotline. In CY 2020, 3,811 calls were answered to the national suicide prevention number. 80% were supported with a safety plan put in place without additional intervention. The hotline is supported by crisis counselors and answered by LineLine.

- **Behavioral Health Voucher Program:** Through crisis counseling grants awarded prior to the pandemic due to tornadoes, flooding, etc., the Division of Behavioral Health created 605 Strong. Individuals can call 211 to visit with a counselor about necessities. Data in the 211 resource database revealed that some people needed more than just referral information; they needed therapeutic supports. As a result, the Behavioral Health Voucher Program has been created, offering vouchers to work with therapists. This program provides access to mental health and substance use treatment to individuals in need, at a provider of their choosing, at no cost if deemed eligible. This program targets adults and youth who have been impacted by floods, severe weather, and tornadoes in 2019 and/or the ongoing COVID-19 pandemic. Individuals may be referred by their provider, through the crisis counseling outreach, or by calling 211. There are 52 enrolled providers across the state that offer services within 10 days of referral. Most of the providers are private independent practitioners. To date, more than 250 individuals have been issued a voucher. Services include individual mental health and substance use disorder services, and transportation cost assistance for appointment access. Telehealth-based services are also available. A question was asked if telehealth services will be available ongoing. Telehealth-based services will continue ongoing, beyond the pandemic. A question was asked about HRSA. The majority are enrolled already so they are already accessing loans. A question was asked if people are being seen by a provider. Laurie Gill shared that the Department is looking at opportunities to address workforce shortages using publicly funded dollars. The challenge is the use of one-time funding vs ongoing funding and competing at the local level.
- **Human Services Center Operations & Program Analysis:** Laura Ringling reminded members that the Human Services Center (HSC), is South Dakota's only state-run psychiatric hospital, located just north of Yankton. HSC provides acute and longer-term inpatient behavioral health treatment to adults and adolescents. The behavioral health service delivery is undergoing a transformation nationwide with increased focus on mental health crisis response and regionalization of services so that individuals can be served in the right level of care (which is not necessarily that highest level of care) and where they are at in their communities. Our current system has been heavily reliant on inpatient psychiatric hospitals, but the Department wants that to evolve as the system evolves, so we've engaged with a consultant to help us plan for the future of HSC. HSC is engaged with the Western Interstate Commission for Higher Education (WICHE) which is an interstate compact that partners with states to provide technical assistance and consulting to assist with generally improving the public mental health system. WICHE is helping HSC establish optimal capacity and patient programming to meet the needs of South Dakota. The primary goal is to align HSC's campus mission with the community needs while being realistic about available resources. Staffing at HSC has been challenging due to the statewide and nationwide shortage of nurses and healthcare workers. HSC is also looking for recommendations related to staffing models and staffing levels to ensure units are staffed appropriately and in compliance with best practice recommendations and regulatory requirements. Staffing in a psychiatric hospital presents unique challenges due to regular fluctuations in patient acuity and census. HSC recognizes the future available workforce in the region may not support reopening all units in the same capacity that they have been historically. HSC is focused on creating the right mix of specialized units to serve the populations needing access to inpatient care as well as determining optimal capacity is moving forward. The Department is currently reviewing recommendations and in process of putting together a plan for implementation.

Children and Family Services: Virgena Wieseler introduced herself and provided information about the following:

- **Commission on Child Support 2021:** The Child Support Commission meets every four years to review child support guidelines as per federal requirements. The Commission may recommend changes reflecting adjustments in the costs of raising children and other child support issues. The Commission was scheduled to meet in 2020, but due to the pandemic, states were given an extra

year. The Commission members were appointed by Governor Noem and include Justice Scott Myren, Chairman; Senator Arthur Rusch; Representative Mike Stevens; Lindsey Riter-Rapp, Attorney; Terri Williams, Child Support Referee; Amber Kinney, Custodial Parent; Rob Simmermon, Non-Custodial Parent; and Virgena Wieseler, Chief of Family and Children Services. Department of Social Services staff from the Division of Child Support, Legal Services, and the Secretariat, as well as an attorney from the Unified Judicial System assist the Commission with its work. Senator Rusch and Representative Stevens will do a 101 presentation on child support during the upcoming session. Dr. Jane Venohr, Center for Policy Research, is the economist that provides information about the cost of raising children, economic guidelines, and the new federal guidelines that need to be implemented in order to be in compliance. Alex Mayer has been hired as the new Division of Child Support Director and will begin employment on Monday, October 25, 2021. Three meetings have been held to date, one in July, August, and September. Public hearings followed the meetings in August and September allowing the public impacted by child support to provide input. The next meeting is on October 27, 2021 in Rapid City with another public hearing following. The last meeting of the Commission will be held on November 18, 2021 in Pierre. The Commission will submit its report and recommendations to Governor Noem and the Legislature by December 31, 2021, so any statute changes can be considered during the 2022 legislative session.

- **Independent Living and Educational Training Voucher Program:** The Chafee Program provides flexible funding to support youth who have experienced foster care at age 14 or older in their transition to adulthood through transitional services. These youth need the same kind of supports and assistance our own children needed when they were preparing for adulthood. Services may include assistance in obtaining a high school diploma and post-secondary education, career exploration, vocational training, job placement and retention, training and opportunities to practice daily living skills, substance abuse prevention, and preventive health activities. Multiple services are provided to youth in the custody of Child Protection Services and tribal youth ages 14-21, e.g., independent living services workshops to prepare the individual with job skills, how to create a resume, find an apartment, or provide financial assistance; teen conferences on a college campus, independent living assessments and case planning; driver education; housing support; and starter kit funds which allow the individual to earn money for participating, up to \$1,200 or educational vouchers funding for scholarships for \$5,000 and with pandemic funding up to \$12,000 through September 2022. South Dakota received an additional \$1.3 million in Chafee dollars and \$200,000 in Educational Training Voucher (ETV) dollars. Hugh Grogan asked how many kids are back due to COVID-19. Less than 20. Virgena stated the Department does not want kids to transition without connections. The Department works hard so young people have connections. Medicaid is provided up to the age of 26. During the pandemic, kids who had already transitioned out were allowed to return without penalty.
- **FTE for Adoption Added During Last Legislation Session:** The number of adoptions continue to grow in South Dakota. There has been an increase in the number of children placed over the past 11 years from 147 in 2010 to 262 in 2021. Even though the number of children placed for adoption continues to increase, there are approximately 104 children free for adoption without an identified resource. These children are older youth with more complex needs, e.g., tough backgrounds, abused and/or neglected, traumatized, or large sibling groups. The adoption program specialist is responsible for monitoring these children and ensuring diligent recruitment efforts are ongoing. There has been increase in the number of Adoption Assistance cases over the past 11 years from 1,452 in 2010 to 2,081 in 2021. The increase in the number of adoptions has impacted the Adoption Assistance caseload. The adoption program specialist is responsible for assisting these children and their families with post adoption services, which includes monthly subsidy payments, Medicaid coverage, assistance in locating appropriate services, assisting adult adoptees with birth family searches, and crisis stabilization. Another factor increasing the workload is the significant increase of adoptive families in crisis. A second adoption program specialist has been hired.
- **More Children Placed for Adoption Last Fiscal Year than Ever Before:** In FY 2021, more children in South Dakota than ever before (262) have been placed with adoptive families, and 227 adoptions were finalized. Foster parent adoption is the largest group (58%), followed by relative adoption

(38%), and very few nonrelative adoptions (4%). Cecelia Fire Thunder asked if there is a county by county map showing where children are placed. Data is done by CPS offices, not by county. Information is available per CPS office. While children are in DSS care, are there therapeutic services prior to being adopted out? ACE scores, history, parents, triggers, etc. are looked at to align children with professionals to address issues.

- **Child Care Federal Funding:** There was a child care crisis that became evident during COVID-19. Kids were home, staff were home, and daycares were closing. Nine million dollars in Coronavirus Aid, Relief, and Economic Security Act (CARES) funding was awarded to the Department and 8.4 million was awarded to registered and licensed providers. The remaining \$577,000 will be used to update technology, which is beneficial for providers, families, and the Department. Additionally, \$25.8 million in Coronavirus Response and Relief Supplemental Appropriations Act (CRRSA) was awarded to the Department. Round one stabilization/tuition relief grants totaling approximately \$10 million to licensed and registered providers, as well as in-home, informal and relative providers and round two stabilization grants provided another \$4 million. Some ways the Department is helping providers is by paying for CPR costs for providers and training for providers to help with businesses, and child care development for providers. The Department also received two types of funds through the American Rescue Plan Act (ARPA). The ARPA stabilization funds (\$61.8 million) must be related to COVID and will provide grants to Child Care and Development Fund (CCDF) eligible providers (registered, licensed, informal, or in-home providers receiving subsidy), and ARPA (\$38.6 million) discretionary funds will be used to expand access to high-quality child care, expand access to child care assistance, mental health supports, and outreach on the availability of child care assistance. The Department will be working with a vendor on a plan for spending to keep daycares open and available for families. The focus on startup grants for the pilot area is workforce and how to help with workforce issues and challenges in healthcare. Sandy Diegel asked about daycares that went out of business. The Office of Licensure and Accreditation knows which daycares closed and there is an opportunity to reach them. Colleen Winter stated the process for funding to communities can be a daunting task. Hugh Grogan asked about press releases, some people are not aware of what happened with the funding. The Department publishes press releases, staff send emails to providers, and staff will call providers who do not respond. There is lots of follow up. Laurie Gill, Cabinet Secretary, stated the funds are for licensed and registered daycares within the Department of Social Services. She asked members to think about people interested that need help, and to let the Department know so technical assistance, resources, or other help can be provided. Brenda Tidball-Zeltinger, Deputy Secretary, stated the Board will be informed to help spread the word. As part of the federal government's priority of the stabilization group, there is dedicated work going on to in South Dakota to provide resources to help daycares and to bring back daycares that left during COVID. Members were asked to let the Department know if they know of someone who doesn't know about the opportunity so staff can reach out to them.

Board Membership: Cabinet Secretary Gill thanked Hugh Grogan and Linda Wordeman for their many years of service on the Board of Social Services. The meeting held today was the last meeting for both Hugh and Linda. The Department has been reviewing all boards under the purview of the Department of Social Services and effective October 31, 2021, is implementing two three-year term limits for members of the Board of Social Services, similar to other DSS boards. With the resignation of Hugh Grogan, a new chairman will be appointed at the next meeting. The Department also intends to gather feedback from board members to find innovative ways to use the Board for public focus groups and public hearings. DSS staff are also identifying processes to use the Board of Social Services to get valuable input and public feedback. Members were asked to let Cabinet Secretary Gill know if they are interested in serving as Chair of the Board, or if they have recommendations for good, qualified people who may be interested in serving on the Board. Members will be notified where they are at with their respective term limits.

Future Agenda Items: There were no suggestions for future agenda items by members.

Public Comment: At 3:25 PM CT, Chairman Grogan asked if anyone wished to provide public

comments. No one appeared for public comment.

Establish Next Meeting Date: The next meeting date is set for April 19, 2022. The meeting may be held in-person with an opportunity to join the meeting via telephone.

Adjourn: Cecelia Fire Thunder made a motion to adjourn. Seconded by Coleen Winter. The Board voted by roll call. Grogan, Bodenstedt, Fire Thunder, Winter, and Diegel voted aye. Motion carried and the meeting was adjourned at 3:28 PM (CT).

DRAFT



2022 South Dakota Legislature
House Bill 1278
ENROLLED

AN ACT

ENTITLED An Act to revise the child support obligation schedule.

BE IT ENACTED BY THE LEGISLATURE OF THE STATE OF SOUTH DAKOTA:

Section 1. That § 25-7-6.2 be AMENDED:

25-7-6.2. The child support obligation must be established in accordance with the following schedule subject to the revisions or deviations as permitted by this chapter. Except as provided in this chapter, the combined monthly net incomes of both parents must be used in determining the obligation to be divided proportionately between the parents based upon their respective net incomes. The noncustodial parent's proportionate share establishes the amount of the child support order.

The emboldened areas of the schedule include a self-support reserve of eight hundred seventy-one dollars per month that accounts for the subsistence needs of the obligated parent with a limited ability to pay. If the obligation using only the noncustodial parent's monthly net income is an obligation within the emboldened areas of the schedule, that amount must be compared to the noncustodial parent's proportionate share using both parents' monthly net incomes. The lesser amount establishes the noncustodial parent's child support order.

Monthly Net Income	One Child	Two Children	Three Children	Four Children	Five Children	Six Children
0-950	79	79	79	79	79	79
951-1,000	129	129	129	129	129	129
1,001-1,050	179	179	179	179	179	179
1,051-1,100	225	229	229	229	229	229
1,101-1,150	266	279	279	279	279	279
1,151-1,200	308	329	329	329	329	329
1,201-1,250	320	379	379	379	379	379

1,251-1,300	333	429	429	429	429	429
1,301-1,350	345	479	479	479	479	479
1,351-1,400	357	523	529	529	529	529
1,401-1,450	370	541	579	579	579	579
1,451-1,500	382	559	629	629	629	629
1,501-1,550	395	577	679	679	679	679
1,551-1,600	407	595	706	729	729	729
1,601-1,650	419	613	727	779	779	779
1,651-1,700	431	629	747	829	829	829
1,701-1,750	443	646	766	855	879	879
1,751-1,800	455	663	785	877	929	929
1,801-1,850	466	679	804	899	979	979
1,851-1,900	478	696	824	920	1012	1029
1,901-1,950	490	713	843	942	1039	1079
1,951-2,000	501	729	862	963	1063	1129
2,001-2,050	513	746	882	985	1086	1177
2,051-2,100	525	763	901	1006	1110	1219
2,101-2,150	536	779	920	1028	1134	1245
2,151-2,200	548	796	939	1049	1157	1271
2,201-2,250	560	813	959	1071	1181	1297
2,251-2,300	572	829	978	1092	1205	1322
2,301-2,350	583	846	998	1115	1246	1348
2,351-2,400	595	862	1020	1139	1272	1374
2,401-2,450	607	879	1041	1163	1299	1400
2,451-2,500	618	896	1062	1186	1325	1425
2,501-2,550	630	912	1083	1210	1352	1477
2,551-2,600	642	929	1105	1234	1378	1527
2,601-2,650	653	946	1126	1258	1405	1569
2,651-2,700	665	962	1147	1281	1431	1599
2,701-2,750	677	979	1168	1305	1458	1628
2,751-2,800	688	996	1190	1329	1484	1658
2,801-2,850	700	1012	1211	1353	1511	1688
2,851-2,900	712	1029	1232	1376	1537	1717

2,901-2,950	723	1046	1253	1400	1564	1747
2,951-3,000	735	1062	1275	1424	1590	1776
3,001-3,050	746	1079	1296	1447	1617	1806
3,051-3,100	758	1096	1317	1471	1643	1836
3,101-3,150	770	1114	1338	1495	1670	1865
3,151-3,200	781	1129	1356	1515	1692	1890
3,201-3,250	793	1146	1373	1533	1713	1913
3,251-3,300	805	1162	1389	1551	1733	1935
3,301-3,350	816	1179	1405	1569	1753	1958
3,351-3,400	821	1185	1421	1587	1773	1981
3,401-3,450	824	1198	1437	1605	1793	2003
3,451-3,500	828	1212	1453	1624	1813	2026
3,501-3,550	831	1226	1470	1642	1834	2048
3,551-3,600	834	1240	1485	1659	1853	2070
3,601-3,650	842	1251	1499	1675	1871	2089
3,651-3,700	852	1263	1513	1690	1888	2109
3,701-3,750	861	1274	1527	1705	1905	2128
3,751-3,800	869	1286	1540	1721	1922	2147
3,801-3,850	876	1297	1554	1736	1939	2166
3,851-3,900	880	1309	1568	1751	1956	2185
3,901-3,950	883	1320	1582	1767	1974	2205
3,951-4,000	889	1332	1596	1782	1991	2224
4,001-4,050	897	1340	1605	1792	2002	2236
4,051-4,100	906	1347	1612	1800	2011	2246
4,101-4,150	915	1353	1619	1808	2019	2256
4,151-4,200	924	1360	1626	1816	2028	2265
4,201-4,250	929	1366	1633	1824	2037	2275
4,251-4,300	932	1373	1640	1831	2046	2285
4,301-4,350	936	1379	1647	1839	2054	2295
4,351-4,400	939	1386	1654	1847	2063	2304
4,401-4,450	943	1392	1660	1854	2071	2313
4,451-4,500	946	1397	1665	1859	2077	2320
4,501-4,550	951	1402	1669	1865	2083	2326

4,551-4,600	954	1407	1674	1870	2089	2333
4,601-4,650	958	1411	1679	1875	2094	2339
4,651-4,700	961	1416	1683	1880	2100	2346
4,701-4,750	965	1421	1688	1885	2106	2352
4,751-4,800	969	1426	1693	1891	2112	2359
4,801-4,850	973	1430	1697	1896	2118	2366
4,851-4,900	978	1437	1704	1904	2126	2375
4,901-4,950	981	1443	1712	1912	2136	2385
4,951-5,000	985	1449	1719	1920	2145	2396
5,001-5,050	989	1456	1726	1928	2154	2406
5,051-5,100	993	1462	1734	1937	2163	2416
5,101-5,150	996	1469	1741	1945	2172	2426
5,151-5,200	1000	1475	1748	1953	2182	2437
5,201-5,250	1005	1481	1756	1961	2191	2447
5,251-5,300	1009	1488	1763	1969	2200	2457
5,301-5,350	1012	1495	1770	1978	2209	2467
5,351-5,400	1016	1502	1778	1986	2218	2478
5,401-5,450	1020	1509	1785	1994	2227	2488
5,451-5,500	1024	1516	1792	2002	2236	2498
5,501-5,550	1028	1523	1800	2010	2245	2508
5,551-5,600	1032	1530	1807	2018	2254	2518
5,601-5,650	1036	1537	1814	2026	2263	2528
5,651-5,700	1040	1544	1821	2035	2273	2538
5,701-5,750	1045	1552	1829	2043	2282	2549
5,751-5,800	1051	1560	1837	2052	2292	2561
5,801-5,850	1058	1568	1845	2061	2302	2572
5,851-5,900	1064	1577	1853	2070	2312	2583
5,901-5,950	1071	1585	1861	2079	2322	2594
5,951-6,000	1077	1593	1869	2088	2332	2605
6,001-6,050	1084	1601	1877	2097	2342	2616
6,051-6,100	1090	1610	1885	2106	2352	2627
6,101-6,150	1097	1619	1896	2118	2366	2642
6,151-6,200	1104	1631	1910	2134	2383	2662

6,201-6,250	1112	1642	1924	2149	2401	2681
6,251-6,300	1119	1654	1938	2165	2418	2701
6,301-6,350	1126	1665	1952	2180	2436	2720
6,351-6,400	1134	1676	1966	2196	2453	2740
6,401-6,450	1141	1688	1980	2212	2470	2759
6,451-6,500	1149	1699	1994	2227	2488	2779
6,501-6,550	1156	1711	2008	2243	2505	2798
6,551-6,600	1156	1711	2010	2245	2507	2801
6,601-6,650	1156	1712	2011	2247	2510	2803
6,651-6,700	1156	1713	2013	2249	2512	2806
6,701-6,750	1156	1714	2015	2251	2514	2808
6,751-6,800	1157	1715	2017	2253	2516	2811
6,801-6,850	1157	1715	2018	2255	2518	2813
6,851-6,900	1162	1716	2020	2257	2521	2816
6,901-6,950	1167	1717	2022	2259	2523	2818
6,951-7,000	1172	1722	2027	2264	2529	2825
7,001-7,050	1177	1729	2034	2272	2538	2835
7,051-7,100	1182	1737	2041	2280	2547	2845
7,101-7,150	1187	1745	2049	2288	2556	2855
7,151-7,200	1192	1753	2056	2297	2565	2865
7,201-7,250	1197	1761	2063	2305	2574	2876
7,251-7,300	1202	1768	2071	2313	2583	2886
7,301-7,350	1207	1776	2078	2321	2593	2896
7,351-7,400	1212	1784	2085	2329	2602	2906
7,401-7,450	1216	1791	2093	2337	2611	2916
7,451-7,500	1221	1798	2100	2346	2620	2927
7,501-7,550	1226	1805	2107	2354	2629	2937
7,551-7,600	1231	1812	2115	2362	2639	2947
7,601-7,650	1237	1819	2122	2370	2648	2958
7,651-7,700	1242	1826	2130	2379	2657	2968
7,701-7,750	1247	1834	2137	2387	2666	2978
7,751-7,800	1253	1841	2144	2395	2675	2988
7,801-7,850	1258	1848	2152	2403	2685	2999

7,851-7,900	1263	1855	2159	2412	2694	3009
7,901-7,950	1268	1862	2166	2420	2703	3019
7,951-8,000	1274	1869	2174	2428	2712	3030
8,001-8,050	1279	1876	2182	2437	2722	3041
8,051-8,100	1285	1884	2191	2447	2733	3053
8,101-8,150	1290	1892	2200	2457	2745	3066
8,151-8,200	1296	1900	2209	2467	2756	3078
8,201-8,250	1302	1908	2218	2477	2767	3090
8,251-8,300	1307	1916	2226	2487	2778	3103
8,301-8,350	1313	1924	2235	2497	2789	3115
8,351-8,400	1319	1932	2244	2507	2800	3128
8,401-8,450	1324	1940	2253	2517	2811	3140
8,451-8,500	1330	1948	2262	2527	2822	3153
8,501-8,550	1336	1956	2271	2537	2833	3165
8,551-8,600	1341	1964	2280	2547	2845	3177
8,601-8,650	1347	1972	2289	2557	2856	3190
8,651-8,700	1352	1980	2298	2566	2867	3202
8,701-8,750	1358	1988	2307	2576	2878	3215
8,751-8,800	1364	1996	2315	2586	2889	3227
8,801-8,850	1369	2004	2324	2596	2900	3239
8,851-8,900	1375	2012	2333	2606	2911	3252
8,901-8,950	1381	2020	2342	2616	2922	3264
8,951-9,000	1386	2028	2351	2626	2933	3277
9,001-9,050	1392	2036	2360	2636	2944	3289
9,051-9,100	1397	2044	2369	2646	2956	3301
9,101-9,150	1403	2052	2378	2656	2967	3314
9,151-9,200	1409	2060	2387	2666	2978	3326
9,201-9,250	1414	2068	2396	2676	2989	3339
9,251-9,300	1420	2076	2404	2686	3000	3351
9,301-9,350	1426	2084	2413	2696	3011	3363
9,351-9,400	1431	2092	2422	2706	3022	3376
9,401-9,450	1437	2100	2431	2716	3033	3388
9,451-9,500	1443	2107	2440	2726	3044	3401

9,501-9,550	1447	2115	2449	2736	3056	3414
9,551-9,600	1452	2123	2459	2747	3068	3427
9,601-9,650	1457	2130	2468	2757	3080	3440
9,651-9,700	1462	2138	2478	2768	3092	3453
9,701-9,750	1466	2145	2487	2778	3103	3466
9,751-9,800	1471	2153	2497	2789	3115	3480
9,801-9,850	1476	2160	2506	2799	3127	3493
9,851-9,900	1481	2168	2516	2810	3139	3506
9,901-9,950	1485	2175	2525	2821	3151	3519
9,951-10,000	1490	2183	2535	2831	3162	3532
10,001-10,050	1495	2190	2544	2842	3174	3546
10,051-10,100	1500	2198	2554	2852	3186	3559
10,101-10,150	1505	2205	2563	2863	3198	3572
10,151-10,200	1509	2213	2572	2873	3210	3585
10,201-10,250	1514	2221	2582	2884	3221	3598
10,251-10,300	1519	2228	2591	2895	3233	3612
10,301-10,350	1524	2236	2601	2905	3245	3625
10,351-10,400	1528	2243	2610	2916	3257	3638
10,401-10,450	1533	2251	2620	2926	3269	3651
10,451-10,500	1538	2258	2629	2937	3281	3664
10,501-10,550	1543	2266	2639	2947	3292	3678
10,551-10,600	1547	2273	2648	2958	3304	3691
10,601-10,650	1552	2281	2658	2969	3316	3704
10,651-10,700	1557	2288	2667	2979	3328	3717
10,701-10,750	1562	2296	2677	2990	3340	3730
10,751-10,800	1566	2303	2686	3000	3351	3743
10,801-10,850	1571	2311	2696	3011	3363	3757
10,851-10,900	1576	2318	2705	3021	3375	3770
10,901-10,950	1581	2326	2714	3032	3387	3783
10,951-11,000	1585	2333	2724	3043	3399	3796
11,001-11,050	1590	2341	2733	3053	3410	3809
11,051-11,100	1595	2349	2743	3064	3422	3823
11,101-11,150	1600	2356	2752	3074	3434	3836

11,151-11,200	1604	2364	2762	3085	3446	3849
11,201-11,250	1609	2371	2771	3095	3458	3862
11,251-11,300	1614	2379	2781	3106	3469	3875
11,301-11,350	1619	2386	2790	3117	3481	3889
11,351-11,400	1623	2394	2800	3127	3493	3902
11,401-11,450	1628	2401	2809	3138	3505	3915
11,451-11,500	1633	2409	2819	3148	3517	3928
11,501-11,550	1638	2416	2828	3159	3528	3941
11,551-11,600	1642	2424	2837	3169	3540	3954
11,601-11,650	1649	2431	2847	3180	3552	3968
11,651-11,700	1656	2439	2856	3190	3564	3981
11,701-11,750	1663	2446	2866	3201	3576	3994
11,751-11,800	1670	2454	2875	3211	3587	4007
11,801-11,850	1677	2462	2885	3222	3599	4020
11,851-11,900	1684	2469	2894	3232	3611	4033
11,901-11,950	1691	2477	2903	3243	3622	4046
11,951-12,000	1698	2484	2913	3254	3634	4059
12,001-12,050	1705	2492	2922	3264	3646	4072
12,051-12,100	1712	2499	2932	3275	3658	4086
12,101-12,150	1719	2507	2941	3285	3669	4099
12,151-12,200	1726	2514	2950	3296	3681	4112
12,201-12,250	1733	2522	2960	3306	3693	4125
12,251-12,300	1741	2529	2969	3317	3705	4138
12,301-12,350	1748	2537	2979	3327	3716	4151
12,351-12,400	1755	2544	2988	3338	3728	4164
12,401-12,450	1762	2552	2997	3348	3740	4177
12,451-12,500	1769	2559	3007	3359	3751	4190
12,501-12,550	1776	2567	3016	3369	3763	4204
12,551-12,600	1783	2574	3026	3380	3775	4217
12,601-12,650	1790	2582	3035	3390	3787	4230
12,651-12,700	1797	2590	3044	3401	3798	4243
12,701-12,750	1804	2597	3054	3411	3810	4256
12,751-12,800	1811	2605	3063	3422	3822	4269

12,801-12,850	1818	2612	3073	3432	3834	4282
12,851-12,900	1825	2620	3082	3443	3845	4295
12,901-12,950	1833	2627	3091	3453	3857	4308
12,951-13,000	1840	2635	3101	3464	3869	4321
13,001-13,050	1847	2642	3110	3474	3881	4335
13,051-13,100	1854	2650	3120	3485	3892	4348
13,101-13,150	1861	2657	3129	3495	3904	4361
13,151-13,200	1868	2665	3138	3506	3916	4374
13,201-13,250	1875	2672	3148	3516	3927	4387
13,251-13,300	1882	2680	3157	3527	3939	4400
13,301-13,350	1889	2687	3167	3537	3951	4413
13,351-13,400	1896	2695	3176	3548	3963	4426
13,401-13,450	1903	2703	3185	3558	3974	4439
13,451-13,500	1910	2710	3195	3569	3986	4452
13,501-13,550	1917	2718	3204	3579	3998	4466
13,551-13,600	1925	2725	3214	3590	4010	4479
13,601-13,650	1932	2733	3223	3600	4021	4492
13,651-13,700	1939	2740	3232	3611	4033	4505
13,701-13,750	1945	2748	3241	3621	4044	4517
13,751-13,800	1950	2755	3250	3630	4055	4529
13,801-13,850	1955	2763	3258	3639	4065	4541
13,851-13,900	1960	2770	3266	3649	4076	4552
13,901-13,950	1965	2778	3275	3658	4086	4564
13,951-14,000	1970	2786	3283	3667	4096	4576
14,001-14,050	1975	2793	3291	3677	4107	4587
14,051-14,100	1980	2801	3300	3686	4117	4599
14,101-14,150	1985	2808	3308	3695	4128	4610
14,151-14,200	1990	2816	3316	3704	4138	4622
14,201-14,250	1996	2823	3325	3714	4148	4634
14,251-14,300	2001	2831	3333	3723	4159	4645
14,301-14,350	2006	2839	3341	3732	4169	4657
14,351-14,400	2011	2846	3350	3742	4180	4669
14,401-14,450	2016	2854	3358	3751	4190	4680

14,451-14,500	2021	2861	3366	3760	4200	4692
14,501-14,550	2026	2869	3375	3770	4211	4703
14,551-14,600	2031	2876	3383	3779	4221	4715
14,601-14,650	2036	2884	3392	3788	4232	4727
14,651-14,700	2041	2892	3400	3798	4242	4738
14,701-14,750	2046	2899	3408	3807	4252	4750
14,751-14,800	2051	2907	3417	3816	4263	4761
14,801-14,850	2056	2914	3425	3826	4273	4773
14,851-14,900	2061	2922	3433	3835	4284	4785
14,901-14,950	2066	2929	3442	3844	4294	4796
14,951-15,000	2071	2937	3450	3853	4304	4808
15,001-15,050	2076	2945	3458	3863	4315	4820
15,051-15,100	2081	2952	3467	3872	4325	4831
15,101-15,150	2086	2960	3475	3881	4336	4843
15,151-15,200	2091	2967	3483	3891	4346	4854
15,201-15,250	2097	2975	3492	3900	4356	4866
15,251-15,300	2102	2982	3500	3909	4367	4878
15,301-15,350	2107	2990	3508	3919	4377	4889
15,351-15,400	2112	2998	3517	3928	4388	4901
15,401-15,450	2117	3005	3525	3937	4398	4913
15,451-15,500	2122	3013	3533	3947	4408	4924
15,501-15,550	2127	3020	3542	3956	4419	4936
15,551-15,600	2132	3028	3550	3965	4429	4947
15,601-15,650	2137	3035	3558	3975	4440	4959
15,651-15,700	2142	3043	3567	3984	4450	4971
15,701-15,750	2147	3051	3575	3993	4460	4982
15,751-15,800	2152	3058	3583	4002	4471	4994
15,801-15,850	2157	3066	3592	4012	4481	5005
15,851-15,900	2162	3073	3600	4021	4492	5017
15,901-15,950	2167	3081	3608	4030	4502	5029
15,951-16,000	2172	3088	3617	4040	4512	5040
16,001-16,050	2177	3096	3625	4049	4523	5052
16,051-16,100	2182	3104	3633	4058	4533	5064

16,101-16,150	2187	3111	3642	4068	4544	5075
16,151-16,200	2192	3119	3650	4077	4554	5087
16,201-16,250	2197	3126	3658	4086	4564	5098
16,251-16,300	2203	3134	3667	4096	4575	5110
16,301-16,350	2208	3141	3675	4105	4585	5122
16,351-16,400	2213	3149	3683	4114	4596	5133
16,401-16,450	2218	3157	3692	4124	4606	5145
16,451-16,500	2223	3164	3700	4133	4616	5157
16,501-16,550	2228	3172	3708	4142	4627	5168
16,551-16,600	2233	3179	3717	4151	4637	5180
16,601-16,650	2238	3187	3725	4161	4648	5191
16,651-16,700	2243	3194	3733	4170	4658	5203
16,701-16,750	2248	3202	3742	4179	4668	5215
16,751-16,800	2253	3210	3750	4189	4679	5226
16,801-16,850	2258	3217	3758	4198	4689	5238
16,851-16,900	2263	3225	3767	4207	4700	5249
16,901-16,950	2268	3232	3775	4217	4710	5261
16,951-17,000	2273	3240	3783	4226	4720	5273
17,001-17,050	2278	3247	3792	4235	4731	5284
17,051-17,100	2283	3255	3800	4245	4741	5296
17,101-17,150	2288	3262	3808	4254	4752	5308
17,151-17,200	2293	3270	3817	4263	4762	5319
17,201-17,250	2298	3278	3825	4273	4772	5331
17,251-17,300	2303	3285	3833	4282	4783	5342
17,301-17,350	2309	3293	3842	4291	4793	5354
17,351-17,400	2314	3300	3850	4300	4804	5366
17,401-17,450	2319	3308	3858	4310	4814	5377
17,451-17,500	2324	3315	3867	4319	4824	5389
17,501-17,550	2329	3323	3875	4328	4835	5400
17,551-17,600	2334	3331	3883	4338	4845	5412
17,601-17,650	2339	3338	3892	4347	4856	5424
17,651-17,700	2344	3346	3900	4356	4866	5435
17,701-17,750	2349	3353	3908	4366	4876	5447

17,751-17,800	2354	3361	3917	4375	4887	5459
17,801-17,850	2359	3368	3925	4384	4897	5470
17,851-17,900	2364	3376	3933	4394	4908	5482
17,901-17,950	2369	3384	3942	4403	4918	5493
17,951-18,000	2374	3391	3950	4412	4928	5505
18,001-18,050	2379	3399	3958	4422	4939	5517
18,051-18,100	2384	3406	3967	4431	4949	5528
18,101-18,150	2389	3414	3975	4440	4960	5540
18,151-18,200	2394	3421	3983	4449	4970	5552
18,201-18,250	2399	3429	3992	4459	4980	5563
18,251-18,300	2404	3437	4000	4468	4991	5575
18,301-18,350	2410	3444	4008	4477	5001	5586
18,351-18,400	2415	3452	4017	4487	5012	5598
18,401-18,450	2420	3459	4025	4496	5022	5610
18,451-18,500	2425	3467	4033	4505	5032	5621
18,501-18,550	2430	3474	4042	4515	5043	5633
18,551-18,600	2435	3482	4050	4524	5053	5644
18,601-18,650	2440	3490	4058	4533	5064	5656
18,651-18,700	2445	3497	4067	4543	5074	5668
18,701-18,750	2450	3505	4075	4552	5084	5679
18,751-18,800	2455	3512	4083	4561	5095	5691
18,801-18,850	2460	3520	4092	4571	5105	5703
18,851-18,900	2465	3527	4100	4580	5116	5714
18,901-18,950	2470	3535	4108	4589	5126	5726
18,951-19,000	2475	3543	4117	4598	5136	5737
19,001-19,050	2480	3550	4125	4608	5147	5749
19,051-19,100	2485	3558	4133	4617	5157	5761
19,101-19,150	2490	3565	4142	4626	5168	5772
19,151-19,200	2495	3573	4150	4636	5178	5784
19,201-19,250	2500	3580	4158	4645	5188	5796
19,251-19,300	2505	3588	4167	4654	5199	5807
19,301-19,350	2510	3596	4175	4664	5209	5819
19,351-19,400	2516	3603	4183	4673	5220	5830

19,401-19,450	2521	3611	4192	4682	5230	5842
19,451-19,500	2526	3618	4200	4692	5240	5854
19,501-19,550	2531	3626	4208	4701	5251	5865
19,551-19,600	2536	3633	4217	4710	5261	5877
19,601-19,650	2541	3641	4225	4719	5272	5888
19,651-19,700	2546	3649	4233	4729	5282	5900
19,701-19,750	2551	3656	4242	4738	5292	5912
19,751-19,800	2556	3664	4250	4747	5303	5923
19,801-19,850	2561	3671	4259	4757	5313	5935
19,851-19,900	2566	3679	4267	4766	5324	5947
19,901-19,950	2571	3686	4275	4775	5334	5958
19,951-20,000	2576	3694	4284	4785	5344	5970
20,001-20,050	2581	3702	4292	4794	5355	5981
20,051-20,100	2586	3709	4300	4803	5365	5993
20,101-20,150	2591	3717	4309	4813	5376	6005
20,151-20,200	2596	3724	4317	4822	5386	6016
20,201-20,250	2601	3732	4325	4831	5396	6028
20,251-20,300	2606	3739	4334	4841	5407	6040
20,301-20,350	2611	3747	4342	4850	5417	6051
20,351-20,400	2617	3755	4350	4859	5428	6063
20,401-20,450	2622	3762	4359	4868	5438	6074
20,451-20,500	2627	3770	4367	4878	5449	6086
20,501-20,550	2632	3777	4375	4887	5459	6098
20,551-20,600	2637	3785	4384	4896	5469	6109
20,601-20,650	2642	3792	4392	4906	5480	6121
20,651-20,700	2647	3800	4400	4915	5490	6132
20,701-20,750	2652	3808	4409	4924	5501	6144
20,751-20,800	2657	3815	4417	4934	5511	6156
20,801-20,850	2662	3823	4425	4943	5521	6167
20,851-20,900	2667	3830	4434	4952	5532	6179
20,901-20,950	2672	3838	4442	4962	5542	6191
20,951-21,000	2677	3845	4450	4971	5553	6202
21,001-21,050	2682	3853	4459	4980	5563	6214

21,051-21,100	2687	3861	4467	4990	5573	6225
21,101-21,150	2692	3868	4475	4999	5584	6237
21,151-21,200	2697	3876	4484	5008	5594	6249
21,201-21,250	2702	3883	4492	5017	5605	6260
21,251-21,300	2707	3891	4500	5027	5615	6272
21,301-21,350	2712	3898	4509	5036	5625	6283
21,351-21,400	2717	3906	4517	5045	5636	6295
21,401-21,450	2723	3914	4525	5055	5646	6307
21,451-21,500	2728	3921	4534	5064	5657	6318
21,501-21,550	2733	3929	4542	5073	5667	6330
21,551-21,600	2738	3936	4550	5083	5677	6342
21,601-21,650	2743	3944	4559	5092	5688	6353
21,651-21,700	2748	3951	4567	5101	5698	6365
21,701-21,750	2753	3959	4575	5111	5709	6376
21,751-21,800	2758	3967	4584	5120	5719	6388
21,801-21,850	2763	3974	4592	5129	5729	6400
21,851-21,900	2768	3982	4600	5139	5740	6411
21,901-21,950	2773	3989	4609	5148	5750	6423
21,951-22,000	2778	3997	4617	5157	5761	6435
22,001-22,050	2783	4004	4625	5166	5771	6446
22,051-22,100	2788	4012	4634	5176	5781	6458
22,101-22,150	2793	4020	4642	5185	5792	6469
22,151-22,200	2798	4027	4650	5194	5802	6481
22,201-22,250	2803	4035	4659	5204	5813	6493
22,251-22,300	2808	4042	4667	5213	5823	6504
22,301-22,350	2813	4050	4675	5222	5833	6516
22,351-22,400	2818	4057	4684	5232	5844	6527
22,401-22,450	2823	4065	4692	5241	5854	6539
22,451-22,500	2829	4072	4700	5250	5865	6551
22,501-22,550	2834	4080	4709	5260	5875	6562
22,551-22,600	2839	4088	4717	5269	5885	6574
22,601-22,650	2844	4095	4725	5278	5896	6586
22,651-22,700	2849	4103	4734	5288	5906	6597

22,701-22,750	2854	4110	4742	5297	5917	6609
22,751-22,800	2859	4118	4750	5306	5927	6620
22,801-22,850	2864	4125	4759	5315	5937	6632
22,851-22,900	2869	4133	4767	5325	5948	6644
22,901-22,950	2874	4141	4775	5334	5958	6655
22,951-23,000	2879	4148	4784	5343	5969	6667
23,001-23,050	2884	4156	4792	5353	5979	6679
23,051-23,100	2889	4163	4800	5362	5989	6690
23,101-23,150	2894	4171	4809	5371	6000	6702
23,151-23,200	2899	4178	4817	5381	6010	6713
23,201-23,250	2904	4186	4825	5390	6021	6725
23,251-23,300	2909	4194	4834	5399	6031	6737
23,301-23,350	2914	4201	4842	5409	6041	6748
23,351-23,400	2919	4209	4850	5418	6052	6760
23,401-23,450	2924	4216	4859	5427	6062	6771
23,451-23,500	2930	4224	4867	5437	6073	6783
23,501-23,550	2935	4231	4875	5446	6083	6795
23,551-23,600	2940	4239	4884	5455	6093	6806
23,601-23,650	2945	4247	4892	5464	6104	6818
23,651-23,700	2950	4254	4900	5474	6114	6830
23,701-23,750	2955	4262	4909	5483	6125	6841
23,751-23,800	2960	4269	4917	5492	6135	6853
23,801-23,850	2965	4277	4925	5502	6145	6864
23,851-23,900	2970	4284	4934	5511	6156	6876
23,901-23,950	2975	4292	4942	5520	6166	6888
23,951-24,000	2980	4300	4950	5530	6177	6899
24,001-24,050	2985	4307	4959	5539	6187	6911
24,051-24,100	2990	4315	4967	5548	6197	6923
24,101-24,150	2995	4322	4975	5558	6208	6934
24,151-24,200	3000	4330	4984	5567	6218	6946
24,201-24,250	3005	4337	4992	5576	6229	6957
24,251-24,300	3010	4345	5000	5586	6239	6969
24,301-24,350	3015	4353	5009	5595	6249	6981

24,351-24,400	3020	4360	5017	5604	6260	6992
24,401-24,450	3025	4368	5025	5613	6270	7004
24,451-24,500	3030	4375	5034	5623	6281	7015
24,501-24,550	3036	4383	5042	5632	6291	7027
24,551-24,600	3041	4390	5050	5641	6301	7039
24,601-24,650	3046	4398	5059	5651	6312	7050
24,651-24,700	3051	4406	5067	5660	6322	7062
24,701-24,750	3056	4413	5075	5669	6333	7074
24,751-24,800	3061	4421	5084	5679	6343	7085
24,801-24,850	3066	4428	5092	5688	6353	7097
24,851-24,900	3071	4436	5100	5697	6364	7108
24,901-24,950	3076	4443	5109	5707	6374	7120
24,951-25,000	3081	4451	5117	5716	6385	7132
25,001-25,050	3086	4459	5126	5725	6395	7143
25,051-25,100	3091	4466	5134	5734	6405	7155
25,101-25,150	3096	4474	5142	5744	6416	7166
25,151-25,200	3101	4481	5151	5753	6426	7178
25,201-25,250	3106	4489	5159	5762	6437	7190
25,251-25,300	3111	4496	5167	5772	6447	7201
25,301-25,350	3116	4504	5176	5781	6457	7213
25,351-25,400	3121	4512	5184	5790	6468	7225
25,401-25,450	3126	4519	5192	5800	6478	7236
25,451-25,500	3131	4527	5201	5809	6489	7248
25,501-25,550	3136	4534	5209	5818	6499	7259
25,551-25,600	3142	4542	5217	5828	6509	7271
25,601-25,650	3147	4549	5226	5837	6520	7283
25,651-25,700	3152	4557	5234	5846	6530	7294
25,701-25,750	3157	4565	5242	5856	6541	7306
25,751-25,800	3162	4572	5251	5865	6551	7318
25,801-25,850	3167	4580	5259	5874	6561	7329
25,851-25,900	3172	4587	5267	5883	6572	7341
25,901-25,950	3177	4595	5276	5893	6582	7352
25,951-26,000	3182	4602	5284	5902	6593	7364

26,001-26,050	3187	4610	5292	5911	6603	7376
26,051-26,100	3192	4618	5301	5921	6613	7387
26,101-26,150	3197	4625	5309	5930	6624	7399
26,151-26,200	3202	4633	5317	5939	6634	7410
26,201-26,250	3207	4640	5326	5949	6645	7422
26,251-26,300	3212	4648	5334	5958	6655	7434
26,301-26,350	3217	4655	5342	5967	6665	7445
26,351-26,400	3222	4663	5351	5977	6676	7457
26,401-26,450	3227	4671	5359	5986	6686	7469
26,451-26,500	3232	4678	5367	5995	6697	7480
26,501-26,550	3237	4686	5376	6005	6707	7492
26,551-26,600	3243	4693	5384	6014	6717	7503
26,601-26,650	3248	4701	5392	6023	6728	7515
26,651-26,700	3253	4708	5401	6032	6738	7527
26,701-26,750	3258	4716	5409	6042	6749	7538
26,751-26,800	3263	4724	5417	6051	6759	7550
26,801-26,850	3268	4731	5426	6061	6770	7562
26,851-26,900	3274	4740	5436	6072	6782	7576
26,901-26,950	3280	4749	5446	6083	6795	7590
26,951-27,000	3286	4758	5456	6095	6808	7604
27,001-27,050	3292	4767	5466	6106	6820	7618
27,051-27,100	3298	4775	5476	6117	6833	7632
27,101-27,150	3304	4784	5487	6128	6846	7646
27,151-27,200	3311	4793	5497	6140	6858	7661
27,201-27,250	3317	4802	5507	6151	6871	7675
27,251-27,300	3323	4811	5517	6162	6883	7689
27,301-27,350	3329	4819	5527	6174	6896	7703
27,351-27,400	3335	4828	5537	6185	6909	7717
27,401-27,450	3341	4837	5547	6196	6921	7731
27,451-27,500	3347	4846	5557	6207	6934	7745
27,501-27,550	3353	4855	5567	6219	6946	7759
27,551-27,600	3359	4863	5577	6230	6959	7773
27,601-27,650	3365	4872	5588	6241	6972	7787

27,651-27,700	3371	4881	5598	6253	6984	7801
27,701-27,750	3377	4890	5608	6264	6997	7815
27,751-27,800	3384	4899	5618	6275	7009	7829
27,801-27,850	3390	4908	5628	6286	7022	7844
27,851-27,900	3396	4916	5638	6298	7035	7858
27,901-27,950	3402	4925	5648	6309	7047	7872
27,951-28,000	3408	4934	5658	6320	7060	7886
28,001-28,050	3414	4943	5668	6332	7072	7900
28,051-28,100	3420	4952	5679	6343	7085	7914
28,101-28,150	3426	4960	5689	6354	7098	7928
28,151-28,200	3432	4969	5699	6365	7110	7942
28,201-28,250	3438	4978	5709	6377	7123	7956
28,251-28,300	3444	4987	5719	6388	7135	7970
28,301-28,350	3451	4996	5729	6399	7148	7984
28,351-28,400	3457	5004	5739	6411	7161	7998
28,401-28,450	3463	5013	5749	6422	7173	8013
28,451-28,500	3469	5022	5759	6433	7186	8027
28,501-28,550	3475	5031	5769	6444	7198	8041
28,551-28,600	3481	5040	5780	6456	7211	8055
28,601-28,650	3487	5048	5790	6467	7224	8069
28,651-28,700	3493	5057	5800	6478	7236	8083
28,701-28,750	3499	5066	5810	6490	7249	8097
28,751-28,800	3505	5075	5820	6501	7262	8111
28,801-28,850	3511	5084	5830	6512	7274	8125
28,851-28,900	3517	5093	5840	6523	7287	8139
28,901-28,950	3524	5101	5850	6535	7299	8153
28,951-29,000	3530	5110	5860	6546	7312	8167
29,001-29,050	3536	5119	5871	6557	7325	8182
29,051-29,100	3542	5128	5881	6569	7337	8196
29,101-29,150	3548	5137	5891	6580	7350	8210
29,151-29,200	3554	5145	5901	6591	7362	8224
29,201-29,250	3560	5154	5911	6602	7375	8238
29,251-29,300	3566	5163	5921	6614	7388	8252

29,301-29,350	3572	5172	5931	6625	7400	8266
29,351-29,400	3578	5181	5941	6636	7413	8280
29,401-29,450	3584	5189	5951	6648	7425	8294
29,451-29,500	3590	5198	5961	6659	7438	8308
29,501-29,550	3597	5207	5972	6670	7451	8322
29,551-29,600	3603	5216	5982	6681	7463	8336
29,601-29,650	3609	5225	5992	6693	7476	8351
29,651-29,700	3615	5234	6002	6704	7488	8365
29,701-29,750	3621	5242	6012	6715	7501	8379
29,751-29,800	3627	5251	6022	6727	7514	8393
29,801-29,850	3633	5260	6032	6738	7526	8407
29,851-29,900	3639	5269	6042	6749	7539	8421
29,901-29,950	3645	5278	6052	6761	7551	8435
29,951-30,000	3651	5286	6062	6772	7564	8449

The share of the custodial parent is presumed to be spent directly for the benefit of the child.

An Act to revise the child support obligation schedule.

I certify that the attached Act originated in
the:

House as Bill No. 1278

Received at this Executive Office
this ____ day of _____,
2022 at _____ M.

Chief Clerk

By _____
for the Governor

Speaker of the House

The attached Act is hereby
approved this _____ day of
_____, A.D., 2022

Attest:

Chief Clerk

Governor

STATE OF SOUTH DAKOTA,

ss.

Office of the Secretary of State

President of the Senate

Attest:

Filed _____, 2022
at _____ o'clock __ M.

Secretary of the Senate

Secretary of State

House Bill No. 1278
File No. _____
Chapter No. _____

By _____
Asst. Secretary of State



2022 South Dakota Legislature
House Bill 1279
ENROLLED

AN ACT

ENTITLED An Act to revise certain provisions relating to child support.

BE IT ENACTED BY THE LEGISLATURE OF THE STATE OF SOUTH DAKOTA:

Section 1. That § 25-7-6.4 be AMENDED:

25-7-6.4. Except as provided in § 25-7-6.26, it is presumed for the purposes of determination of child support that a parent is capable of being employed a minimum of one thousand eight hundred twenty hours per year, and the parent's child support obligation must be calculated at a rate not less than one thousand eight hundred twenty hours at the state minimum wage.

Section 2. That § 25-7-6.7 be AMENDED:

25-7-6.7. Deductions from monthly gross income must be allowed as follows:

- (1) Income taxes payable based on the applicable tax rate for a single taxpayer and a monthly payroll period rather than the actual tax rate;
- (2) Social security and Medicare taxes based on the applicable tax rate for an employee or a self-employed taxpayer;
- (3) Contributions to an IRS qualified retirement plan not exceeding ten percent of gross income;
- (4) Actual business expenses of an employee, incurred for the benefit of his employer, not reimbursed;
- (5) Payments made on other support and maintenance orders.

Section 3. That § 25-7-6.10 be AMENDED:

25-7-6.10. Deviation from the schedule in § 25-7-6.2 must be considered if raised by either party and made only upon the entry of specific findings based upon any of the following factors:

- (1) The income of a subsequent spouse or contribution of a third party to the income or expenses of that parent but only if the application of the schedule works a financial hardship on either parent;
- (2) Any financial condition of either parent that would make application of the schedule inequitable. If the total amount of the child support obligation, including any adjustments for health insurance and child care costs, exceeds fifty percent of the obligor's monthly net income, it is presumed that the amount of the obligation imposes a financial hardship on the obligor. This presumption may be rebutted based upon other factors set forth in this section;
- (3) Any necessary education or health care special needs of the child;
- (4) The effect of agreements between the parents regarding extra forms of support for the direct benefit of the child;
- (5) The obligation of either parent to provide for subsequent natural children, adopted children, or stepchildren. However, an existing support order may not be modified solely for this reason; or
- (6) The voluntary and unreasonable act of a parent that causes the parent to be unemployed or underemployed, consistent with the provisions of § 25-7-6.26.

Section 4. That § 25-7-6.13 be AMENDED:

25-7-6.13. All orders for support entered and in effect prior to July 1, 2022, may be modified in accordance with this chapter without requiring a showing of a change in circumstances from the entry of the order.

Section 5. That § 25-7-6.14 be AMENDED:

25-7-6.14. If the child resides with the obligor six or more nights in a month pursuant to a custody order, the court may, if deemed appropriate under the circumstances, grant an abatement of not less than thirty-eight percent nor more than sixty-six percent of the basic child support obligation for the nights the child resides with the obligor. It shall be presumed that the parenting time is exercised.

In deciding whether an abatement is appropriate, the court or child support referee shall consider the fixed obligations of the custodial parent that are attributable to the child and to the increased non-duplicated costs of the noncustodial parent that are associated with the child's time with the noncustodial parent. The burden is on the noncustodial parent to demonstrate the increased costs that the noncustodial parent incurs for non-

duplicated fixed expenditures, including routine clothing costs, costs for extra-curricular activities, school supplies, and other similar non-duplicated fixed expenditures.

The order granting the abatement must specify the number of nights that the abatement is allowed and the amount of the abatement. To calculate an abatement, the court or child support referee shall:

- (1) Determine the basic child support calculation, excluding additional costs including health insurance or child care, and annualize the same;
- (2) Divide the annual amount in subdivision (1) by three hundred sixty-five days to calculate the daily child support amount;
- (3) Multiply the daily child support amount in subdivision (2) by the number of overnights the child spends with the noncustodial parent on a monthly basis; and
- (4) Multiply the amount in subdivision (3) by the abatement percentage utilized. The figure must be annualized and subtracted from the monthly child support obligation.

No abatement may exceed the child support cross credit allowed under § 25-7-6.27.

If the noncustodial parent does not exercise the extended parenting time during a particular year, the noncustodial parent is required to repay the abated amount of child support to the custodial parent.

Section 6. That § 25-7-6.16 be AMENDED:

25-7-6.16. The court shall enter an order addressing how the child's health care needs will be met by medical support. The medical support order must include a provision for medical insurance if the insurance is accessible for the child and available to a parent at reasonable cost. Enrollment in public health coverage does not satisfy the medical support obligation if medical insurance is available to one or both of the parents at a reasonable cost and is accessible for the child. Medical insurance is considered accessible if a medical insurance benefit plan is available and provides coverage for the child residing within the geographic area covered by the insurance policy. Medical insurance is considered reasonable in cost if the cost attributable to the child is equal to or less than eight percent of the parent's net income as determined under this chapter, after proportionate medical support credit is applied, and the amount must be specified in the order for support.

The cost of the insurance attributable to the child is the cost of adding the child to existing coverage, the cost of private medical insurance for the child, or the cost

attributable to the child under family coverage. The cost attributable to the child under family coverage is the cost to the parent to obtain family coverage divided by the number of individuals enrolled in the family coverage. The cost so computed must be apportioned between the parents on the basis of income or income imputed as provided in this chapter. If one parent pays the entire amount, that parent shall either be reimbursed by the other parent for that parent's portion of the payment or shall receive a credit against the support obligation, whichever is appropriate. Any additional, reasonable health care costs, including medical, optometric, dental or orthodontic, or counseling costs for each minor child that exceed two hundred fifty dollars in any year and are not covered by insurance, must be apportioned between the parents in proportion to the support obligation of each parent. The parent that has primary physical custody of the child is responsible for the first two hundred fifty dollars of health care costs each calendar year.

Section 7. That § 25-7-6.26 be AMENDED:

25-7-6.26. If a parent in a child support establishment or modification proceeding fails to furnish income or other financial information, the parent is in default. Income not actually earned by a parent may be imputed to the parent pursuant to this section. Except in cases of physical or mental disability or incarceration for one hundred eighty days or more, it is presumed for the purpose of determining child support in an establishment or modification proceeding that a parent is capable of being employed a minimum of one thousand eight hundred twenty hours per year at the state minimum wage, absent evidence to the contrary. Evidence to rebut this presumption may be presented by either parent.

Income may be imputed to a parent when the parent is unemployed, underemployed, fails to produce sufficient proof of income, has an unknown employment status, or is a full-time or part-time student, whose education or retraining will result, within a reasonable time, in an economic benefit to the child for whom the support obligation is determined, unless the actual income is greater.

In all cases where imputed income is appropriate, the amount imputed must be based upon the following:

- (1) The parent's residence;
- (2) The parent's recent work and earnings history;
- (3) The parent's occupational, educational, and professional qualifications;
- (4) Existing job opportunities and associated earning levels in the community or the local trade area;

- (5) The parent's age, literacy, health, criminal record, record of seeking work, and other employment barriers;
- (6) The availability of employers willing to hire the parent; and
- (7) Other relevant background factors.

Income is not imputed to a parent who is physically or mentally disabled to the extent that the parent cannot earn income; who is incarcerated for more than one hundred eighty days; who has made diligent efforts to find and accept suitable work or to return to customary self-employment, to no avail; or when the court makes a finding that other circumstances exist that make the imputation inequitable, in which case the imputed income may only be decreased to the extent required to remove such inequity.

Imputed income may be in addition to actual income and is not required to reflect the same rate of pay as actual income.

Section 8. That chapter 25-7 be amended with a NEW SECTION:

A written finding for the establishment or modification of a child support order that the application of the child support schedule in § 25-7-6.2 would be unjust or inappropriate in a case is sufficient to rebut the presumption in that case. The best interest of the child must be taken into consideration. Findings to rebut application of the child support schedule must state the amount of support that would have been required under the schedule and include a justification of why the order deviates from the schedule.

Section 9. That § 25-4-43 be REPEALED.

An Act to revise certain provisions relating to child support.

I certify that the attached Act originated in
the:

House as Bill No. 1279

Received at this Executive Office
this _____ day of _____,
2022 at _____ M.

Chief Clerk

By _____
for the Governor

Speaker of the House

The attached Act is hereby
approved this _____ day of
_____, A.D., 2022

Attest:

Chief Clerk

Governor

STATE OF SOUTH DAKOTA,

ss.

Office of the Secretary of State

President of the Senate

Attest:

Filed _____, 2022
at _____ o'clock ___ M.

Secretary of the Senate

Secretary of State

House Bill No. 1279
File No. _____
Chapter No. _____

By _____
Asst. Secretary of State

Department of Social Services Federal Pandemic Funding

April 2022



South Dakota
Department of
Social Services

Laurie R. Gill, Cabinet Secretary

DSS Federal Pandemic Grants – FY2022

Pandemic Grants:

FY2022
FEDERAL TOTAL

Economic Assistance: Low Income Energy Assistance Program, Community Services Block Grant (CSBG), Supplemental Nutrition Assistance (SNAP) Administrative Funds, Temporary Assistance to Needy Families (TANF)	\$34,310,411
Child Protection Services:	\$1,880,558
Child Care:	\$126,941,638
Human Services Center (HSC):	\$2,699,945
Community Behavioral Health: Emergency Grant, Community Mental Health Block Grant, and Substance Abuse and Prevention & Treatment Block Grant	\$16,448,137
Federal Pandemic Grants:	\$182,280,689

DSS Federal Pandemic Grants – FY2022

- One-time funding through American Rescue Plan Act (ARPA)
- Funding used for one-time activities (i.e. short term benefit increases, one-time investments, etc.)
- Grants fund activities allowable under current grants but increase funding on a one-time basis

DSS Federal Pandemic Grants – FY2022

Economic Assistance Programs \$34.3 million

- **Low Income Energy Assistance Program.** Additional federal funding to assist low-income families with energy costs consistent with current program. One time benefit increases and potential to extend summer cooling benefit depending on funds available after the heating season.
- **Community Services Block Grant.** One time funding to community action agencies distributed to assist in emergency services including rent, utilities, transportation, etc.
- **Temporary Assistance to Needy Families.** One time benefit increases.
- **Supplemental Nutrition Assistance.** Administrative funds to modify information systems and make changes to issue SNAP pandemic funds.

DSS Federal Pandemic Grants – FY2022

Child Protection Services - \$1.88 million

- Independent living supports for youth in foster care transitioning to adulthood, post secondary education support (books, tuition, etc.)
- Parenting education materials and training, funding for transportation costs, family visitation and technology to support virtual visits, and direct assistance to families to address pandemic related impacts. Community-based efforts to prevent child abuse and neglect.

Child Care Services

Child Care Services provides child care subsidies to low-income families so they can work and go to school.

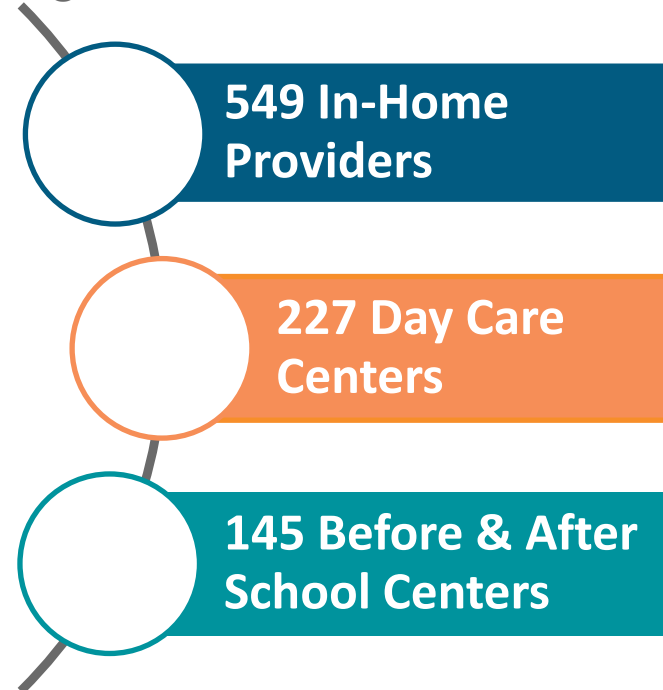
Who we serve

- Low-income families with children
 - ❑ Average monthly families served **1,814**
- Child care providers
- Parents seeking information on child and safety seats

Services provided

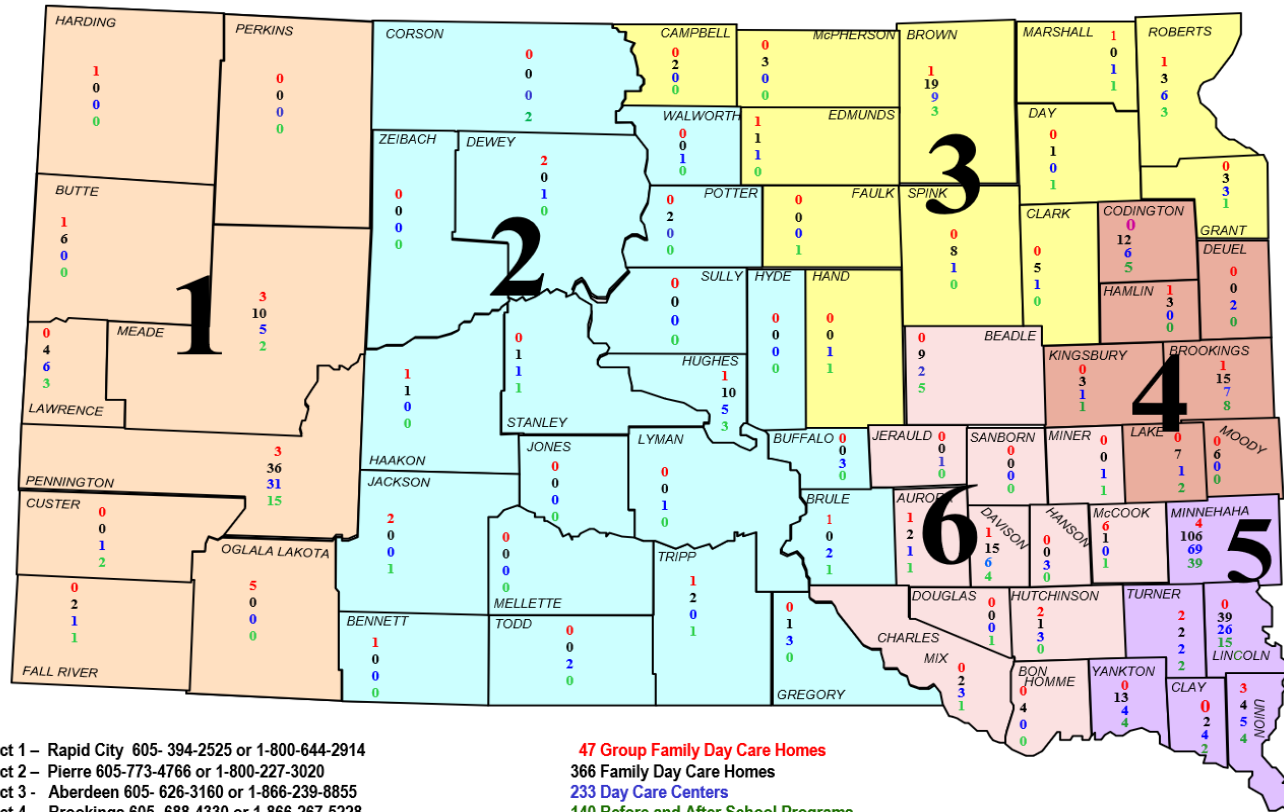
- Child Care Assistance Program
- Provider licensing and registration
- Provider professional development

FY2021 Licensed, Registered, or Regulated Child Care Providers



Child Care Services

CHILD CARE LICENSING DISTRICTS



- District 1 – Rapid City 605-394-2525 or 1-800-644-2914
- District 2 – Pierre 605-773-4766 or 1-800-227-3020
- District 3 - Aberdeen 605- 626-3160 or 1-866-239-8855
- District 4 - Brookings 605- 688-4330 or 1-866-267-5228
- District 5 – Sioux Falls 605-367-5444 or 1-866-801-5421
- District 6 – Mitchell 605-995-8000 or 1-800-231-8346

47 Group Family Day Care Homes
 366 Family Day Care Homes
 233 Day Care Centers
 140 Before and After School Programs

November 2021

Searchable database for all licensed/registered providers
<https://apps.sd.gov/ss45provinfo/search.aspx>

DSS Federal Pandemic Grants

DSS Child Care Investments

Investment 1: Access

Investment 2: Advancing Quality

Investment 3: Affordability

Investment 4: Workforce

Investment 5: System Supports

Investment 6: Educate & Communicate

DSS Federal Pandemic Grants – FY2022

Child Care - \$100 million

\$100 million in funding

- \$61 million in stabilization funding to temporarily cover operating and other expenses
 - Application portal opened December 13, 2021 and closed for first payment distribution in mid January
 - \$32.3 million issued to 603 providers
 - Portal available through February 25 for any new applicants that did not apply by mid January date
 - \$2.9 million issued to 70 providers

American Rescue Plan (ARPA) Discretionary Funds- Federal Guidance

\$38 million in one-time funding

- Funds must be obligated by September 2023 and expended by September 2024
- States can use funds for any allowable use of federal Child Care Development Funds (CCDF)
- Eligible recipients: CCDF Families and Providers
 - CCDF families are subsidy participants
 - CCDF providers meet federal and state requirements
- States are encouraged to target funding to
 - **Expand access to high quality child care**
 - **Expand access to child care assistance**
 - **Expand awareness of child care assistance**
 - **Mental Health Supports**
 - **Supporting extended hours for providers so parents can become vaccinated**

American Rescue Plan (ARPA) Discretionary Funds- Federal Guidance

\$38 million in one-time funding

- **Expand access to high quality child care**
 - Conduct cost of care studies
 - Increasing provider child care subsidy payment rates
 - Improve payment policies by providing direct grants
 - Transition subsidy payments to enrollment based vs attendance based
 - Increase child care staff wages
 - Building a supply of child care for underserved populations including start up grants/funding for operating costs for new daycares
 - Allocate funds for scholarships or direct provision of additional training or credentials

American Rescue Plan (ARPA) Discretionary Funds- Federal Guidance

\$38 million in one-time funding

- **Expand access to child care assistance**
 - Waiving or reducing copayments
 - Broadening the definition of qualifying activities
 - Broadening the income eligibility threshold
 - Updating policies to reflect modern labor force conditions
 - Child Care assistance for essential workers that exceed income guidelines
 - Data systems to support equitable access
 - Modernize data system
 - Make improvements to provide more transparent & updated information to parents

- **Expand awareness of child care assistance**
 - Outreach providers and families not currently participating in child care assistance
 - Fund partners and organizations to assist in outreach

American Rescue Plan (ARPA) Discretionary Funds- Federal Guidance

\$38 million in one-time funding

- **Mental Health Supports**

- Supporting mental health consultants
- Connecting families with mental health resources
- Trainings for child care providers and parents

- **Supporting Vaccination**

- Supporting additional or extended hours so families can become vaccinated

- You can find more detailed information in the published federal guidance here:

<https://www.acf.hhs.gov/sites/default/files/documents/occ/CDF-ACF-IM-2021-03.pdf>

ARPA Discretionary Funds- Current Proposals

\$38 million in one-time funding

- Conduct a study related to workforce and child care needs
- Start up grants to increase availability of child care. Funding would support operating costs and can be used to support payroll and operating expenses.
 - Could support private/public partnerships for on-site daycares for employers
- Direct grants to providers to address various health, safety, and quality items.
- Provide scholarships to individuals to complete child care associate degrees
- Software/technology for use by providers and state to facilitate real time information regarding availability of child care and streamlining system for licensing/billing for child care assistance
- **Other ideas?**

Next Steps

- Gather additional stakeholder feedback
- Develop workplan

DSS Federal Pandemic Grants – FY2022

Human Service Center (HSC) - \$2.7 million

- One-time provider relief funds used for equipment, facility projects, and supplies related to COVID-19 prevention and treatment
 - Screening kiosks checking for symptoms at each campus entry point, upgraded air filtration, and air duct cleaning, iPads for remote visitation, upgrading to keycard access to campus to allow internal contact tracing, emergency response carts.
- Appropriation to Bureau of Administration for \$800,000 to upgrade sewer system at HSC.

DSS Federal Pandemic Grants – FY2022

Community Behavioral Health - \$16.4 million

- Address Mental and Substance Use Disorder during COVID-19 supports crisis intervention services, mental and substance use disorder treatment and other related recovery supports for children and adults impacted by COVID-19
- Activities include the purchase of PPE, telehealth equipment, recovery supports and the Behavioral Health Voucher Program
- Expand crisis care and telehealth, suicide prevention, systems of care. Training, technical assistance, and targeted awareness campaign regarding behavioral health services and supports.
- Structured case management for individuals receiving substance use disorder services, expanded medical detox, crisis care, and supported housing.
- Workforce development efforts.

Behavioral Health Service Delivery Transformation

- American Rescue Plan Act Funding: \$3,750,000 funded over four years for a total of \$15,000,000
- The current system provides a variety of treatment and prevention services but does not include comprehensive crisis response model
- Without comprehensive regional mental health supports in place, individuals in mental health crisis are often involuntarily committed to inpatient psychiatric hospitals when they could be served in a less restrictive setting closer to their home and community
- Adding to previous investments in short-term crisis stabilization services through Appropriate Regional Facilities (ARF) in Yankton, Watertown, and Pennington County, this project seeks to further expand ARF as well as other behavioral health service capacity statewide
- The approach creates integrated regional behavioral health centers that could include crisis stabilization, residential substance use treatment services, and transitional housing. This project includes funding for construction of new facilities or expanding/renovating existing facilities across the state

Behavioral Health Service Delivery Transformation

South Dakotans who are experiencing a behavioral health crisis are met with a law enforcement or EMT response. Without regional mental health supports in place, individuals in mental health crisis are often involuntarily committed to inpatient psychiatric hospitals when they could be served in a less restrictive setting.

- Admissions for 5-day emergency mental illness holds to the Human Services Center (HSC) average over 600 annually
- 35% of admissions to HSC are discharged in five days or less which is the population that would be best served regionally
- Diverts individuals who are experiencing a behavioral health crisis from emergency departments, jail settings with services near their home/community
- Aligns with national trends as well as recommendations by the Mental Health Task Force

Behavioral Health Service Delivery Transformation

- Current service model includes 11 community mental health centers and over 40 accredited substance use disorder providers serving geographic catchment areas
- Focus is on treatment and prevention services but lacks having a comprehensive crisis response/diversion model in place
- Supporting individuals in crisis with an integrated model builds a continuum of care vs relying upon inpatient psychiatric care and/or inappropriate placement
- Hospitals will also support this effort to the extent that it reduces emergency room utilization
- Provides a coordinated approach to support sufficient capacity for all regions of South Dakota

Behavioral Health Service Delivery Transformation

- Funding to build/develop/expand regional centers across the state with infrastructure and ongoing funding to support services
- Federal funds (one-time ARPA) infrastructure development:
 - Central Region
 - Southeast Region
 - South Central Region
 - Northeast Region
 - Western Region
- Focus in FY23 will be to identify and support needs of projects underway with priority provided to regions where gaps exist (Central Region, South Central Region, Northeast Region)
- Soliciting proposals from stakeholders
- Evaluating ongoing general funds needed in FY24

Other Pandemic Funding

- **One-time funding to reinvest in Home and Community-Based Services (HCBS) to enhance, expand, or strengthen these services**
- Medical Services - Private Duty Nursing Services
- Community Behavioral Health - Targeted Medicaid funded services
- Under this one-time funding opportunity, providers can use the funding to implement a variety of activities to enhance, expand, or strengthen Medicaid HCBS. Examples of eligible activities/expenses include:
 - 80% for Direct care workforce one-time compensation adjustments
 - Other retention incentives
 - Direct care worker recruitment and training
 - 20% Equipment and Supplies
- HCBS providers can spend no more than 55% of their total allotted ARP funding on direct care workforce one-time compensation adjustments.
- On-line application portal opened in February and just over \$14 million paid to providers.
- Providers have until June 2023 to expend the funds and report back as to how funds were distributed

Thank You

Contact Information

Laurie Gill



605.773.3165



dssinfo@state.sd.gov



dss.sd.gov



South Dakota
Department of
Social Services



This page left blank intentionally.



2022 South Dakota Legislature
House Bill 1133
ENROLLED

AN ACT

ENTITLED An Act to provide that the cost of a home study required for an adoption is the responsibility of the Department of Social Services.

BE IT ENACTED BY THE LEGISLATURE OF THE STATE OF SOUTH DAKOTA:

Section 1. That § 25-6-9.1 be AMENDED:

25-6-9.1. A person may not place a child in a home for adoption until a home study has been completed by a licensed child placement agency, as defined in § 26-6-14, the Department of Social Services, or a certified social worker eligible to engage in private independent practice, as defined in § 36-26-17. Any person who submitted home studies under this section or under § 26-4-15 prior to July 1, 1990, may continue to submit home study reports without meeting the above requirements.

A home study must include a fingerprint-based criminal record check completed by the Division of Criminal Investigation and a central registry screening completed by the Department of Social Services.

A child who is in the custody of the Department of Social Services may not be placed in a home for adoption until a fingerprint-based criminal record check has been completed by the Federal Bureau of Investigation, for each adopting parent.

The cost of a home study required under this section is the responsibility of the Department of Social Services. The necessary funding must be budgeted and expended through the general appropriations act, pursuant to chapter 4-7. The Department shall make rules pursuant to chapter 1-26 to establish a cap on the cost to be reimbursed.

Any person who violates this section is guilty of a Class 1 misdemeanor.

An Act to provide that the cost of a home study required for an adoption is the responsibility of the Department of Social Services.

I certify that the attached Act originated in
the:
House as Bill No. 1133

Received at this Executive Office
this ____ day of _____,
2022 at _____ M.

Chief Clerk

By _____
for the Governor

Speaker of the House

The attached Act is hereby
approved this ____ day of
_____, A.D., 2022

Attest:

Chief Clerk

Governor

STATE OF SOUTH DAKOTA,

ss.

Office of the Secretary of State

President of the Senate

Attest:

Filed _____, 2022
at _____ o'clock __ M.

Secretary of the Senate

Secretary of State

House Bill No. 1133
File No. _____
Chapter No. _____

By _____
Asst. Secretary of State



2022 South Dakota Legislature
Senate Bill 174
ENROLLED

AN ACT

ENTITLED An Act to make an appropriation to provide a grant for the construction of a facility to provide certain health facilities and services and to declare an emergency.

BE IT ENACTED BY THE LEGISLATURE OF THE STATE OF SOUTH DAKOTA:

Section 1. There is hereby appropriated from the general fund the sum of \$8,000,000 to the Department of Social Services, for the purpose of providing a grant to assist in the construction of a facility that will provide all of the following: specialty rehabilitation pediatric hospital, specialty school for children under twenty-one, intermediate health care facility for children under twenty-one, and outpatient rehabilitation pediatric services.

Section 2. The secretary of the Department of Social Services shall approve vouchers and the state auditor shall draw warrants to pay expenditures authorized by this Act.

Section 3. Any amounts appropriated in this Act not lawfully expended or obligated by June 30, 2026, shall revert in accordance with the procedures prescribed in chapter 4-8.

Section 4. Whereas, this Act is necessary for the support of the state government and its existing public institutions, an emergency is hereby declared to exist, and this Act shall be in full force and effect from and after its passage and approval.

An Act to make an appropriation to provide a grant for the construction of a facility to provide certain health facilities and services and to declare an emergency.

I certify that the attached Act originated in
the:
Senate as Bill No. 174

Received at this Executive Office
this ____ day of _____,
2022 at _____ M.

Secretary of the Senate

By _____
for the Governor

President of the Senate

The attached Act is hereby
approved this ____ day of
_____, A.D., 2022

Attest:

Secretary of the Senate

Governor

STATE OF SOUTH DAKOTA,

ss.

Office of the Secretary of State

Speaker of the House

Attest:

Filed _____, 2022
at _____ o'clock __ M.

Chief Clerk

Secretary of State

Senate Bill No. 174
File No. _____
Chapter No. _____

By _____
Asst. Secretary of State



2022 South Dakota Legislature
Senate Bill 196
ENROLLED

AN ACT

ENTITLED An Act to make an appropriation to provide grants for certain residential alternative care programs and to declare an emergency.

BE IT ENACTED BY THE LEGISLATURE OF THE STATE OF SOUTH DAKOTA:

Section 1. There is hereby appropriated from the general fund the sum of \$5,000,000 to the Department of Social Services, for the purpose of providing grants to support alcohol and drug abuse recovery programs and services for women delivered through alternative care programs.

Section 2. Before the awarding of grants provided by section 1 of this Act, grantees shall demonstrate the capacity to serve a new or underserved area with qualifying services.

Section 3. The Secretary of Social Services shall approve vouchers and the state auditor shall draw warrants to pay expenditures authorized by this Act.

Section 4. Any amounts appropriated in this Act not lawfully expended or obligated by June 30, 2026, shall revert in accordance with the procedures prescribed in chapter 4-8.

Section 5. Whereas, this Act is necessary for the support of the state government and its existing public institutions, an emergency is hereby declared to exist, and this Act shall be in full force and effect from and after its passage and approval.

An Act to make an appropriation to provide grants for certain residential alternative care programs and to declare an emergency.

I certify that the attached Act originated in the:

Received at this Executive Office this ____ day of _____,

Senate as Bill No. 196

2022 at _____ M.

Secretary of the Senate

By _____
for the Governor

President of the Senate

The attached Act is hereby approved this _____ day of _____, A.D., 2022

Attest:

Secretary of the Senate

Governor

STATE OF SOUTH DAKOTA,

ss.

Office of the Secretary of State

Speaker of the House

Attest:

Filed _____, 2022
at _____ o'clock __ M.

Chief Clerk

Secretary of State

Senate Bill No. 196
File No. _____
Chapter No. _____

By _____
Asst. Secretary of State

Behavioral Health Crisis Care in SD

For Everyone, Everywhere, Every Time



Implementation Planning for 988 - Call Center Hub

Informed by the work of the Behavioral Health Crisis Response Stakeholder Coalition

Key Factors to Consider

from the Planning Coalition



Workforce availability and retention is a top concern for sustainable operations

Staffing up for specialized services will present challenges. To realistically implement the plan, workforce development and supporting wages to recruit and retain a specialized workforce is critical.



Building capacity for local response and receiving facilities are equally important

While the intent of the 988 implementation plan focuses on call center hub development, using terminology from the Crisis Now model, the other two pillars - "someone to respond" and "somewhere to go" are equally critical in standing up a responsive crisis system in South Dakota.



Local providers are central to successful messaging and promotion of 988

Equipping agencies with materials and information to support public education at the local level will be critical.



Monitoring of actual call volume compared to projections will be needed

Based on long-term projections, it remains to be seen what long-term funding will be necessary to support call center capacity.

What is 988?

A new three-digit number for mental health crisis launching nationally on July 16, 2022. Grant funding was made available to all states through Vibrant Emotional Health to ensure the successful transition from the current 10-digit crisis number to the new three-digit number – 988. When implemented, 988 will be routed to the Lifeline's current 1-800 number, managed by the Helpline Center.

Who contributed to the 988 implementation plan?

The Division of Behavioral Health invited stakeholders representative of the full continuum of behavioral health crisis response or prevention services available in South Dakota. Membership included state staff, people with lived experience, Lifeline Crisis Center (Helpline Center) staff, state suicide prevention coordinators, mobile crisis service providers, crisis respite and stabilization service providers, law enforcement representatives, 911 leaders, peer support service providers, mental health and suicide prevention advocacy groups, tribal representatives, and other geographic or disparate population representatives.

What are the benefits of 988 for South Dakotans?

- **Immediate access to mental health professionals**
On average, 80% of calls received by trained crisis counselors in a 988 setting can be de-escalated on the phone, reducing the need to dispatch law enforcement in situations that do not have safety concerns. In the event situations necessitate a response, resources can be quickly dispatched.
- **One, easy to remember number to call**
Increased access to community-based resources through a central call center for both referring law enforcement and individuals seeking help for themselves or loved ones.

Funding

An independent consultant, Guidehouse, was contracted to review funding need and potential funding solutions for 988 call center operations. Implementation planning (March 2021-February 2022) funding was provided through grant by Vibrant. Ramp up and first year funding needs (March 2022-June 2023) will be addressed using currently available one-time crisis funds. Future funding options are being reviewed based on findings from the report provided by Guidehouse.



South Dakota
Department of
Social Services

Work Plan managed by the Division of Behavioral Health
For more information: <https://dss.sd.gov/behavioralhealth/grantinfo.aspx>

This page left blank intentionally.



Community Health Access and Rural Transformation Model (CHART)

April 19, 2022

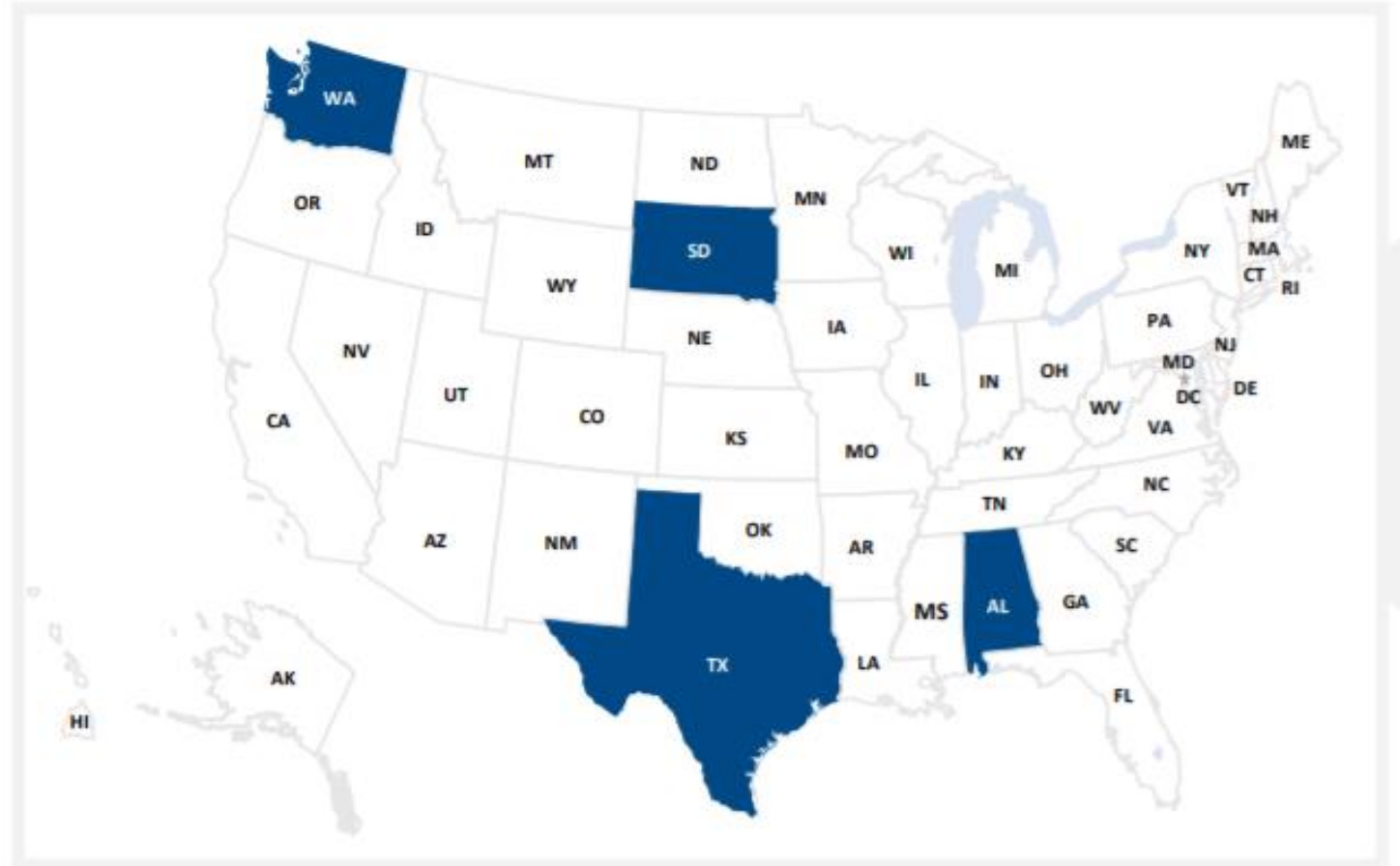


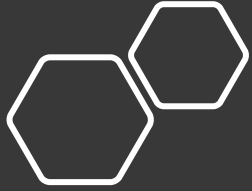
CHART Overview

- Community Health Access and Rural Transformation Model (CHART)
 - CMS Innovation Center Opportunity
- DSS was awarded for the community transformation track. The goals of the track are to:
 - Improve access to care in rural areas.
 - Improve the quality of care and health outcomes for rural beneficiaries.
 - Improve adoption of alternative payment models (APMs) among rural providers.
 - Improve rural provider financial stability.
- Model is currently in the pre-implementation period until December 31, 2022.
 - There are six, one year performance periods that run through December 31, 2028.

CHART Awards

- DSS was one of four lead organizations awarded for the community transformation track.
 - Texas Health and Human Services Commission
 - Washington State Health Care Authority
 - University of Alabama Birmingham





Grant Award

- DSS as the lead organization was awarded \$2 million initially.
- Up to \$3 million additional dollars may be awarded to DSS over the life of the grant.
- Grant will be used for program administration.
- It is anticipated that some of the grant money will flow to the hospitals as subrecipients related to the health transformation plan.

CHART Payment Methodology

- Transitions payments for hospitals services from current fee for service methodology to a bi-weekly capitated payment amount (CPA).
- Historical baseline will be used to avoid COVID-19 impacted years and trended forward.
- There will be a mid-year assessment of the CPA and end-of-year adjustment after each performance period.
- The capitated payment amount is tied to beneficiaries in the defined community.



Defined Community and Participating Hospitals

Community and participating hospitals include:

- Brown County
 - Sanford Aberdeen Medical Center
- Custer County
 - Monument Health Custer Hospital
- Lawrence County
 - Monument Health Spearfish Hospital
 - Monument Health Lead-Deadwood Hospital
- The community can be redefined one time as part of the Health Transformation plan.

CHART Timeline

- **Award** – October 2021
- **Community Needs Assessment** – February 2022
- **DSS Awards CHART Vendor** – March 2022
- **Transformation Plan Initial Submission** – May 18, 2022
- **Medicare Estimated Payment** – June 2022
- **Hospital CPA Review** - October 11, 2022
- **Participant Hospital Agreements Due** – November 1, 2022
- **Medicare Payment** – January 1, 2023
- **Medicaid Payment** – January 1, 2024

Advisory Council

Advisory council's role is to provide a community perspective and collectively advise the Lead Organization

Organization	Name
South Dakota Medicaid	Sarah Aker
South Dakota Department of Health	Josie Petersen
Community HealthCare Association of the Dakotas	Shelly Ten Napel
South Dakota Association of Health Care Organizations	Jacob Parsons
Monument Health	Christine Papineau
Sanford Health	Eric Hilmoe
Patient Perspective	Jacqueline Sly
Patient Perspective	Kay Johnson

Health Transformation Plan



Health Transformation Plan Timeline



Transformation Plan Requirements

- CMS requires the transformation plan to:
 - Focus on **population health disparities** present in the Community;
 - Address at least one of the following in its Strategic Priorities:
 - Behavioral health treatment
 - Substance use disorder treatment
 - Chronic disease management and prevention
 - Maternal and infant health
 - Include strategies to expand the use of **telehealth and other technology** to support care delivery improvement.

All members of the Advisory Council have to sign off on the transformation plan before submission to CMS.

Health Transformation Plan Overview

Section I

Section I – Application Updates

- Community Definition and Update Request
- Clinical and Non-Clinical Provider Network
- Participant Hospital Recruitment

Section II

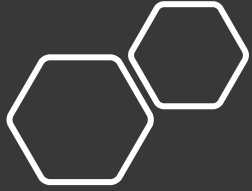
Section II – Strategy and Requested Flexibilities

- Strategic Priorities and Action Steps
- Summarizing the Transformation Plan
- Health Equity and Access to Care
- Quality Measures
- Quality Strategy

Section III

Section III – Aligned Payers

- Medicaid Alignment
- Aligned Payers



Section I Collaboration & Input

- Defined Community
 - Health Transformation Plan is opportunity to redefine what counties are included in the community.
 - Asked participating hospitals to provide us a list of additional counties they would like included by **April 15, 2022**.



Section II

Collaboration & Input

- Quality Strategy
- Strategic Priorities and Action Steps

Quality Strategy

The following are required quality measures that must be reported on:

Quality Domain	Measure	Description	Direction	Statewide	Community	Source
Chronic Conditions (Required)	Prevention Quality Chronic Composite (Inpatient avoidable chronic disease admissions)	Acute readmissions within 30 days of discharge for 18 years and older	Lower is better	993.7 per 100,000	928.2 per 100,000	Medicare FFS
Care Coordination (Required)	Plan All-Caused Readmission	Inpatient avoidable chronic disease admissions for individuals ages 18 and older	Lower is better	14.30%	12.70%	Medicare FFS
Patient Experience and Engagement (Required)	Hospital Consumer Assessment of Health Care Providers and Systems	Patient perspective of care survey	5 Stars is Highest	NA	Sanford Medical Center - 4 Stars Monument - Not available	HCAHPS

Quality Strategy Substance Use Disorder (SUD) Domain

The CHART model requires reporting on either a substance use, maternal health, or prevention quality domain.

Measure	Description	Direction	Baseline	Comparison	Better than Comparison	Source
Pharmacotherapy for Opioid Use Disorder	Individuals 18 to 64 w/ OUD being treated w/MAT.	Higher is Better	57.7% (Community)	64.4% (Statewide)	No	Medicare FFS
Follow up after ED Visit for Alcohol Use and Other Drug Abuse or Dependence	SUD follow-up visits for individuals who accessed the emergency department due to a principal diagnosis of alcohol or other drug abuse or dependence.	Higher is Better	Data is Not Available			
Use of Opioids at High Dosage in Persons without Cancer	Percent of individuals without cancer receiving opioid prescriptions with an average daily morphine milligram equivalent greater than or equal to 90 mg over a period of 90 days or longer.	Lower is Better	18-64: 6.7% (Statewide)	18-64: 6.5% (National Median)	No	Medicaid

Quality Strategy

Maternal Health Domain

The CHART model requires reporting on either a substance use, maternal health, or prevention quality domain.

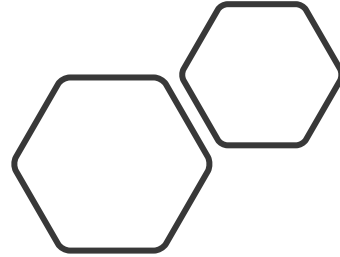
Measure	Description	Direction	Baseline	Comparison	Better than Comparison	Source
Prenatal and Postpartum Care	Women who had a postpartum care visit between 7 and 84 days after delivery	Higher is Better	32.6% (Statewide)	72.3% (National Median)	No	Medicaid
Timeliness of Prenatal Care	Women with a prenatal visit in first trimester or within 42 days of enrollment	Higher is Better	35.4% (Statewide)	84.4% (National Median)	No	Medicaid
Contraceptive Care - Postpartum	Postpartum Women Ages 21 - 44 provided contraceptive care	Higher is Better	LARC, 3 Days of Delivery: 2.3% LARC, 60 Days of Delivery: 15.9% Most Effective or Moderately Effective, 3 Days of Delivery: 14.7% Most Effective or Moderately Effective, 60 Days of Delivery: 45.6% (Statewide)	LARC, 3 Days of Delivery: 11.9% LARC, 60 Days of Delivery: 41.6% Most Effective or Moderately Effective, 3 Days of Delivery: 1.9% Most Effective or Moderately Effective, 60 Days of Delivery: 12.6% (National Median)	Yes	Medicaid

Quality Strategy Prevention Domain

The CHART model requires reporting on either a substance use, maternal health, or prevention quality domain.

Measure	Description	Direction	Baseline	Comparison	Better than Comparison	Source
Tobacco Use Screening and Cessation Intervention	Patients 18 and older screened for tobacco use for individuals 18 years and older and the percent who received tobacco cessation intervention if necessary	Higher is Better	Data is Not Available			
Breast Cancer Screening	Women 51-74 that have a mammogram screen for breast cancer every 24 months	Higher is Better	Data is Not Available			
Adult's Access to Preventative/Ambulatory Care Visits	Access to preventative/primary care for adults age 20 and older	Higher is Better	90.8% (Community)	90.7% (Statewide)	Yes	Medicare FFS
Child and Adolescent Well-Care Visits	Well-child visits	Higher is Better	First 15 Months: 48.4% 3-6: 50% 12-21: 35.3% (Statewide)	First 15 Months: 65.6% 3-6: 65.6% 12-21: 53.2% (National Median)	No	Medicaid

Strategic Priorities



The following were identified as needs in the community needs assessment:

- Staffing, recruitment, and retention of providers
- Access to mental health services

Strategic Priorities

Per CMS the strategic priorities should address social determinants of health (SDOH).

- **What SDOH should we focus on?**

Per CMS health equity should be included in each strategic priority within the transformation plan.

- **What health equity issues or health disparity issues should we focus on addressing?**

Strategic Priorities

The following were identified as strategic priorities during the application:

- Utilizing remote patient monitoring to better manage chronic conditions;
- Screening and self-management of chronic conditions through community health workers;
- Utilizing pharmacogenomic testing to increase medication adherence; and
- Enhancing access to specialty care through telemedicine.

Should these still be our focus? How can we better align our priorities with quality measures and SDOH and health equity requirements?

Model Flexibilities

Medicare Program and Payment Policy Waivers (Hospital-Specific)	
Waiver	Purpose
Skilled Nursing Facility (SNF) 3-Day Rule Waiver	This would waive the rule requiring a three-day stay in a Participant Hospital with swing-bed for approval of Medicare post-hospital extended care services prior to admission to a SNF.
Telehealth Expansion	This would expand allowable originating sites to include a beneficiary's place of residence for certain synchronous and asynchronous telehealth services. Services would be related to wellness visits, evaluation & monitoring, and analyzing patient images. Additionally, health care providers would be permitted to engage in telehealth services with individuals who are not established patients.
Care Management Home Visits	This would allow Participant Hospitals to offer home visits to beneficiaries proactively and in advance of any potential hospitalization, and would waive the homebound requirement for receiving such services.
Waiver of certain Medicare Hospital and/or CAH Conditions of Participation (CoPs)	Waivers of Medicare CoPs could allow Participant Hospitals to make certain changes to their facility structure, and maintain their hospital or CAH status for the purpose of Medicare enrollment and certification, Medicare hospital quality reporting, and in order to receive payments under the capitated payment arrangement. (NOTE: This waiver would not be operationalized before CY2024.)
CAH 96 Hour Certification Rule	This would waive the condition of payment for inpatient CAH services that a physician must certify that a patient is expected to be discharged or transferred within 96 hours of being admitted into a CAH.

Model Flexibilities

Beneficiary Engagement Incentives (Hospital-Specific)	
Incentive	Purpose
Cost sharing for Medicare Part B services	<p>Participant Hospitals will be allowed to reduce or waive the applicable co-insurance on the Medicare allowed amount (estimated at approximately \$10 per visit). Examples of potential criteria for waiving cost sharing could include:</p> <ul style="list-style-type: none">• Financial need;• Patients with high disease burden that would benefit from more frequent visits to avoid hospitalization and disease progression; and• Patients with recent hospitalizations or ED visits.
Transportation	<p>This will allow Participant Hospitals to offer free or discounted transportation services (to include a ride sharing service and a Participant Hospital's own contracted automobile) for beneficiaries requiring face to face care with a Participant Hospital and to connect beneficiaries with follow up services, including trips to:</p> <ul style="list-style-type: none">• A pharmacy or courier service for medication;• An external specialist's office;• Elective procedures; and• Health care providers for other health-related services and activities.
Gift Card Reward for Chronic Disease Management Programs	<p>This would allow Participant Hospitals to provide gift cards to eligible aligned beneficiaries for incentivizing participation and adherence in a chronic disease management program.</p>



Other Collaboration & Input

- Care Partners
 - **What non-hospital care providers should we be engaging with on strategic objectives?**
- Community Partners
 - **What community partners such as social service entities, nonprofit organizations, and religious organizations should we work with?**



Section III Aligned Payers

- One of the goals of the model is to recruit commercial payers to align with Medicare's payment model.
- As a condition of the CHART model Medicaid has to be an aligned payer by January 1, 2024.
- Recruitment of commercial payers is recommended, but not required.



Funding

- Per the NOFO Lead Organizations may pass some of the funding directly to participant hospitals for investing in and successfully implementing care delivery redesign efforts.
- DSS anticipates grant funding being available to support CHART implementation and strategic initiatives.
- The funding will be awarded based on a methodology that DSS will design with input from participating hospitals.

Next Steps

- Draft the transformation plan.
 - DSS will draft in conjunction with participating hospitals and Advisory Council and the DSS Board.
- Follow-up meetings with hospitals and the Advisory Council planned for April and May.