

SOUTH DAKOTA DEPARTMENT OF CORRECTIONS

SD Department of Corrections

Project Prison Reset Task Force

April 3, 2025



SOUTH DAKOTA DEPARTMENT OF CORRECTIONS

Prisons Overview



Offender Classification Definitions

Custody Levels: The levels of restriction of offender movement within a DOC institution. These levels are identified as Close, Medium, Min-R and Minimum. Each offender that is housed in a DOC institution is assigned a custody level or classification, that is determined through risk assessment tools that consider criminality, behavior, mental and clinical well being, risk for violence, etc.

Close Custody – Offenders who have a risk of escape, behavioral issues or are a danger to the staff and public are housed in Level IV and V facilities with controlled movement.

Medium Custody – Offenders who represent a moderate risk to the public and staff whom shall not work outside the secure perimeter of a Level III or higher facility. Require controlled movement.

Minimum –Restricted – Custody level for offenders who are suitable for minimum custody supervision within secure confinement without limited or controlled movement. May be housed at a Level II facility.

Minimum – Offenders who represent a low risk to the public and staff. These offenders are “gate pass eligible” and may work outside the secure perimeter of a facility to include work crews, work release and to attend local college programs/certifications.



Facility Security Level Definitions

Security Levels: Correctional facilities are assigned levels of security that determine the mechanics, technology, and grades of security components necessary to control the movement and freedoms of the offenders incarcerated within. These levels are identified as Level I (Min camp), II (Minimum and minimum-restricted), III (Medium), IV (Close) and V (Multi-custody). The physical security components for each level include:

Level I Facility – Must have designated boundaries but need not have perimeter fencing. May only house inmates of minimum custody classification

Level II Facility – Must have designated boundaries with a single or double perimeter fence. The perimeter of a Level II facility must be patrolled periodically. Inmates classified as minimum or minimum-restricted may be housed in a Level II facility, but generally an inmate of higher classification may not be housed in a Level II facility.

Level III Facility – Generally must have a wall or double perimeter fencing with razor wire and detection devices. A level III facility must use controlled sally ports. The perimeter of a Level III facility must be continuously patrolled. An inmate classified as close custody, medium custody or an inmate of a lower classification level may be incarcerated in a level III facility, but generally an inmate of a higher classification may not be incarcerated in a level III facility.



Facility Security Level Definitions

Security Levels Continued:

Level IV Facility –Generally must have a wall or double perimeter fencing with razor wire and detection devices. A level III facility must use controlled sally ports. The perimeter of a Level III facility must be continuously patrolled. An inmate classified as close custody or an inmate of a lower classification level may be incarcerated in a level IV facility, but generally an inmate of a higher classification may not be incarcerated in a level IV facility on a long term basis.

Level V Facility – This facility has the highest security level and may incarcerate an inmate of any classification level. Level V must have double perimeter fencing with razor wire and detection devices and/or equivalent security architecture. A level V facility must use controlled sally ports. The perimeter of a Level V facility must be continuously patrolled.

Level V facilities are typically the intake facility for the agency and have multiple levels of controlled movement within the facility to manage the multiple custody levels.

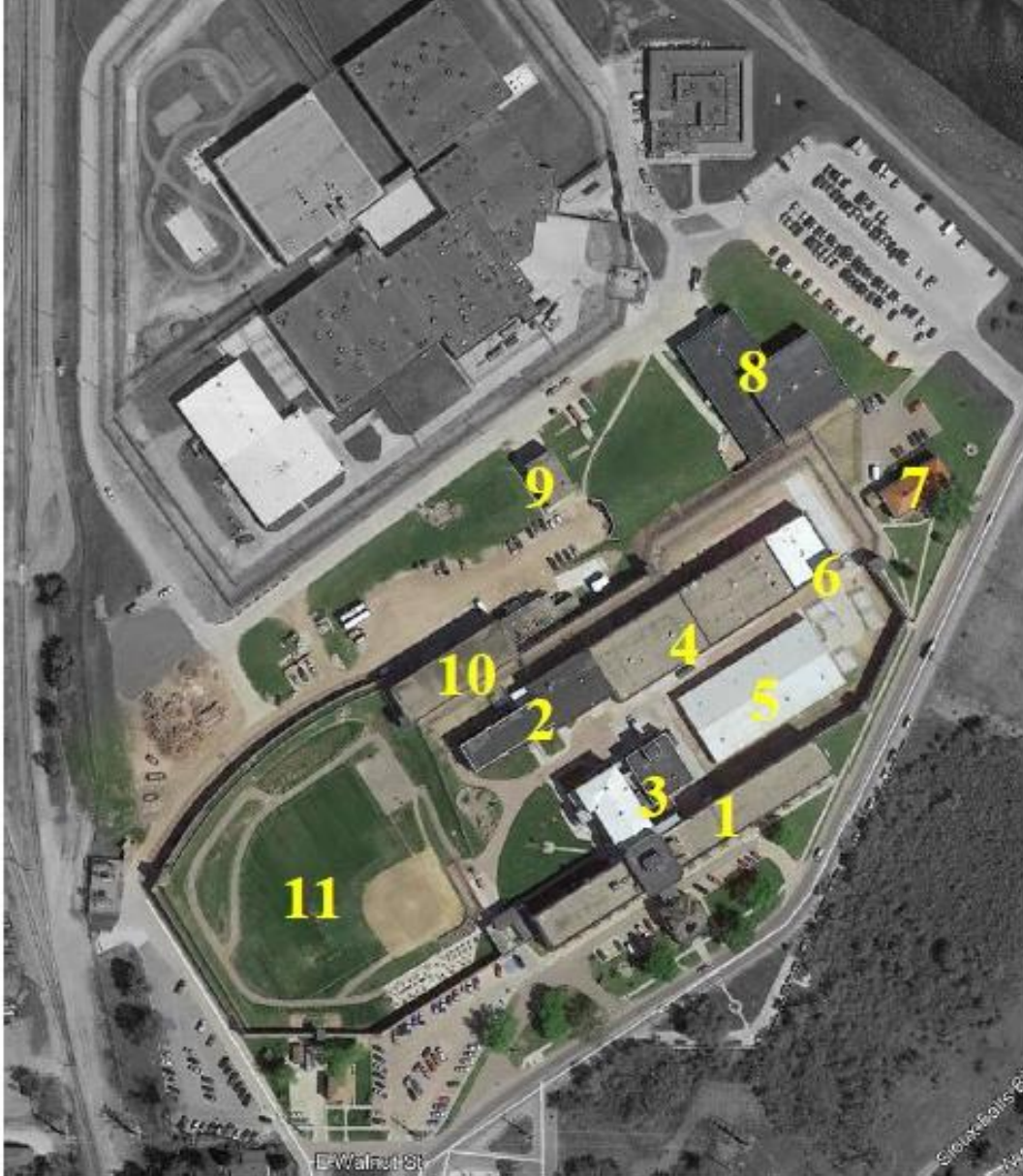


Security Levels

Facility	Class
Level I	We Don't have
Level II	Minimum/Min-R
Level III	Minimum/Min-R, Medium
Level IV	Medium, Close
Level V	Minimum/Min-R, Medium, Close



South Dakota State Penitentiary- Level IV



1. Hill Housing
2. School
3. Dining, health services,
kitchen
4. Pheasantland Industries #1
5. Pheasantland Industries #2
6. Restrictive Housing
7. Training Academy
8. Rec Building
9. Maintenance Building
10. Warehouse
11. Rec Yard



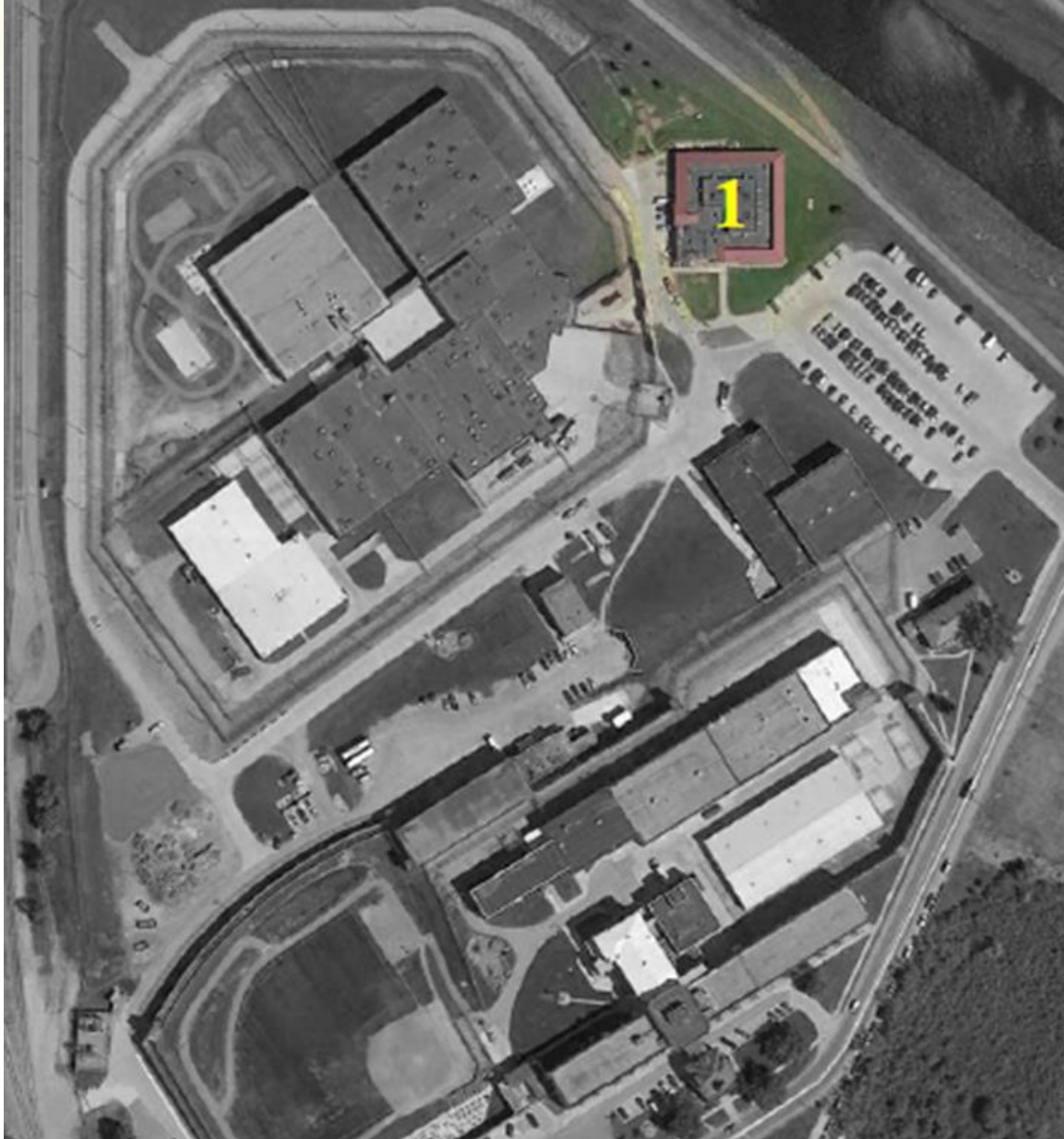
Jameson Prison – Level V



1. Housing Units
2. Production Building



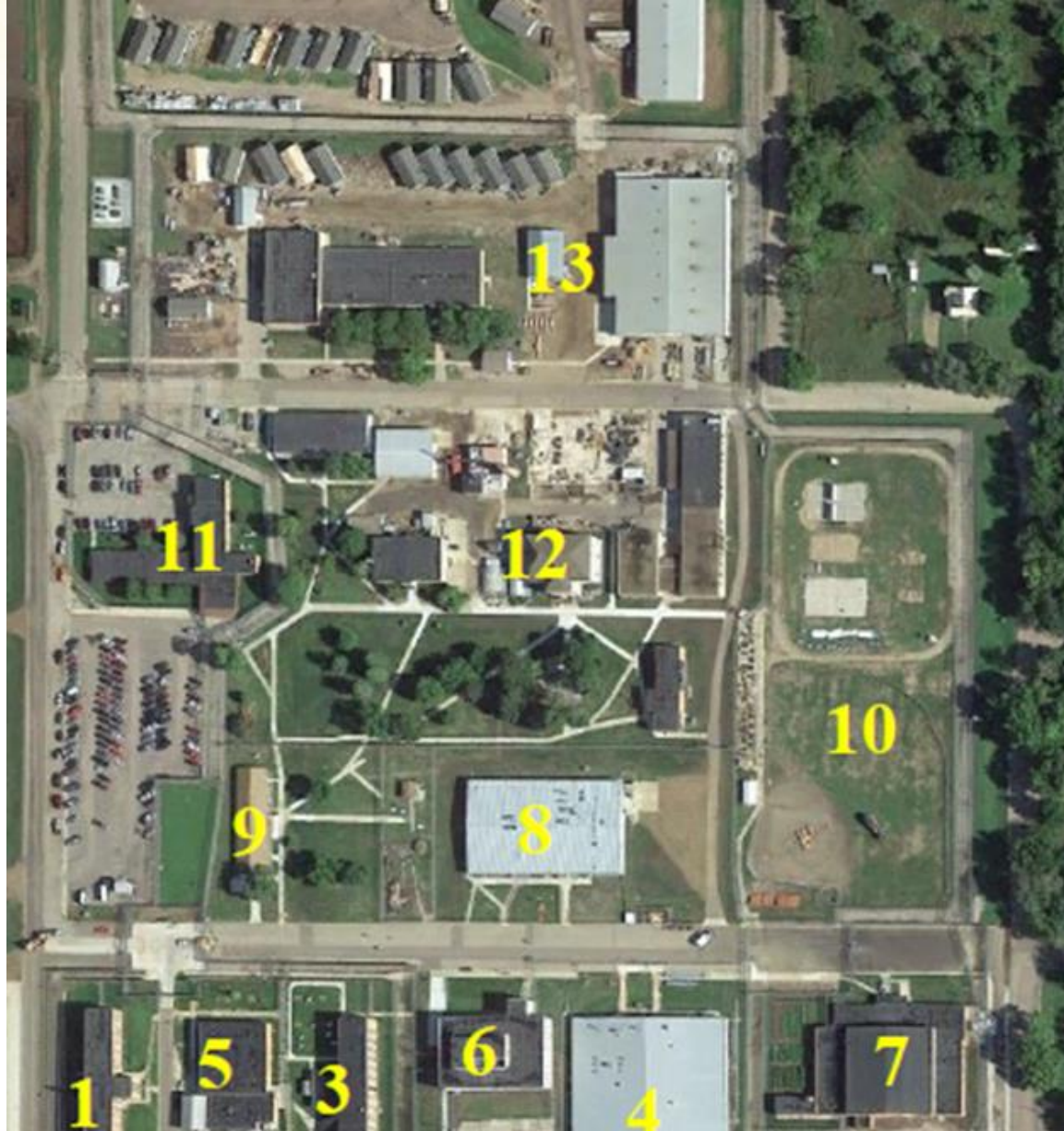
Sioux Falls Minimum Center Level II



1. Housing Unit



Mike Durfee State Prison – Level III



1. Housing
2. Housing
3. Housing
4. Housing
5. Food services/kitchen
6. Library
7. Armory
8. Dining Hall
9. Health services
10. Rec Yard
11. Administration
12. School/classrooms
13. Vocational programs
14. Governor's House Program



Yankton Minimum Center – Level II



1. Housing Unit



South Dakota Women's Prison - Level V

Pierre Minimum Center – Level II



1. SDWP Housing
2. Mother/Infant Unit
3. Unit E Housing
4. Administration
5. Pierre Minimum Center
6. Training Academy
7. Maintenance



Rapid City Minimum Center – Level II



1. Housing Unit

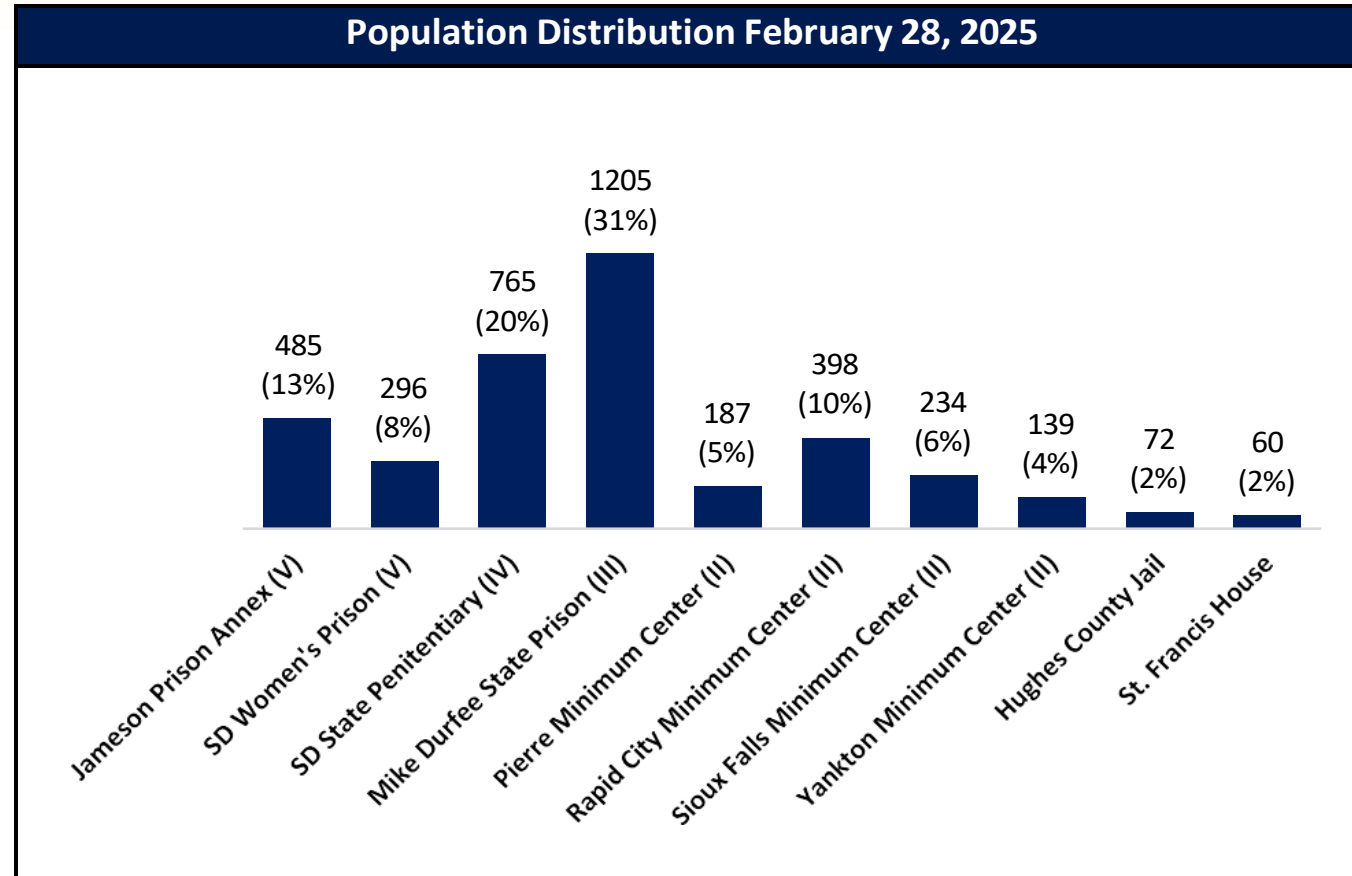


Rapid City Correctional Facility – Level III

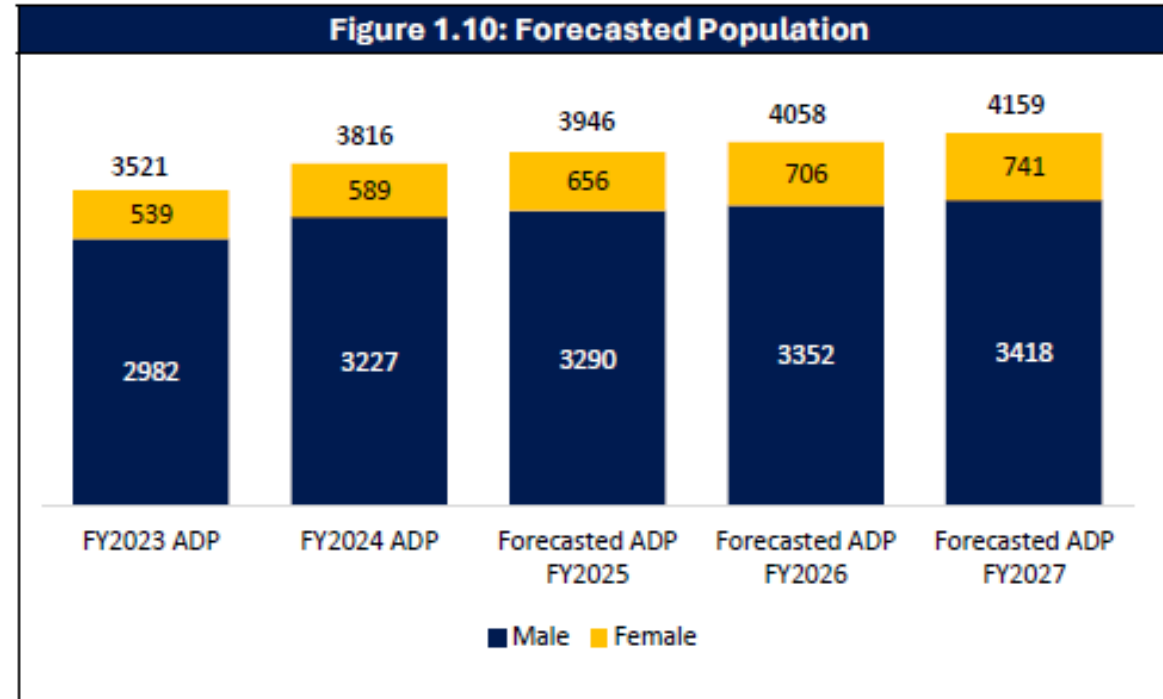


Statistical Overview





Population Forecast



Capacities by Classification Current (Point in Time)

Facility	Design Capacity	Population	Min	Min-R	Med	Close	Unclassed
Pierre Minimum Center (II)	120	213 (178%)	98	81	1	0	33
Rapid City Min Center (II)	216	393 (182%)	67	317	1	0	8
Sioux Falls Minimum Center (II)	80	234 (293%)	111	115	0	0	8
Yankton Minimum Center (II) Construction population reduction	192	139 (72%)	96	43	0	0	0
Mike Durfee State Prison (III)	963	1230 (128%)	17	473	733	1	6
SD State Penitentiary (IV)	426	772 (181%)	3	199	433	82	55
Jameson Prison Annex (V)	576	511 (89%)	9	92	135	214	61
SD Womens Prison (V)	202	310 (153%)	17	167	100	7	19
Total	2775	3802 (137%)	418	1487	1403	304	190

Does not include 130 inmates in contract beds in the community. 72 females and 58 males.



Offender Classification Definitions

Custody Level: The level of restriction of offender movement within a DOC institution. These levels are identified as Close, Medium, Min-R and Minimum. Each offender that is housed in a DOC institution is assigned a custody level that is determined through risk assessment tools that consider criminality, behavior, mental and clinical well being, risk for violence, etc.

Close Custody – Offenders who have a risk of escape, behavioral issues or are a danger to the staff and public are housed in Level IV and V facilities with controlled movement.

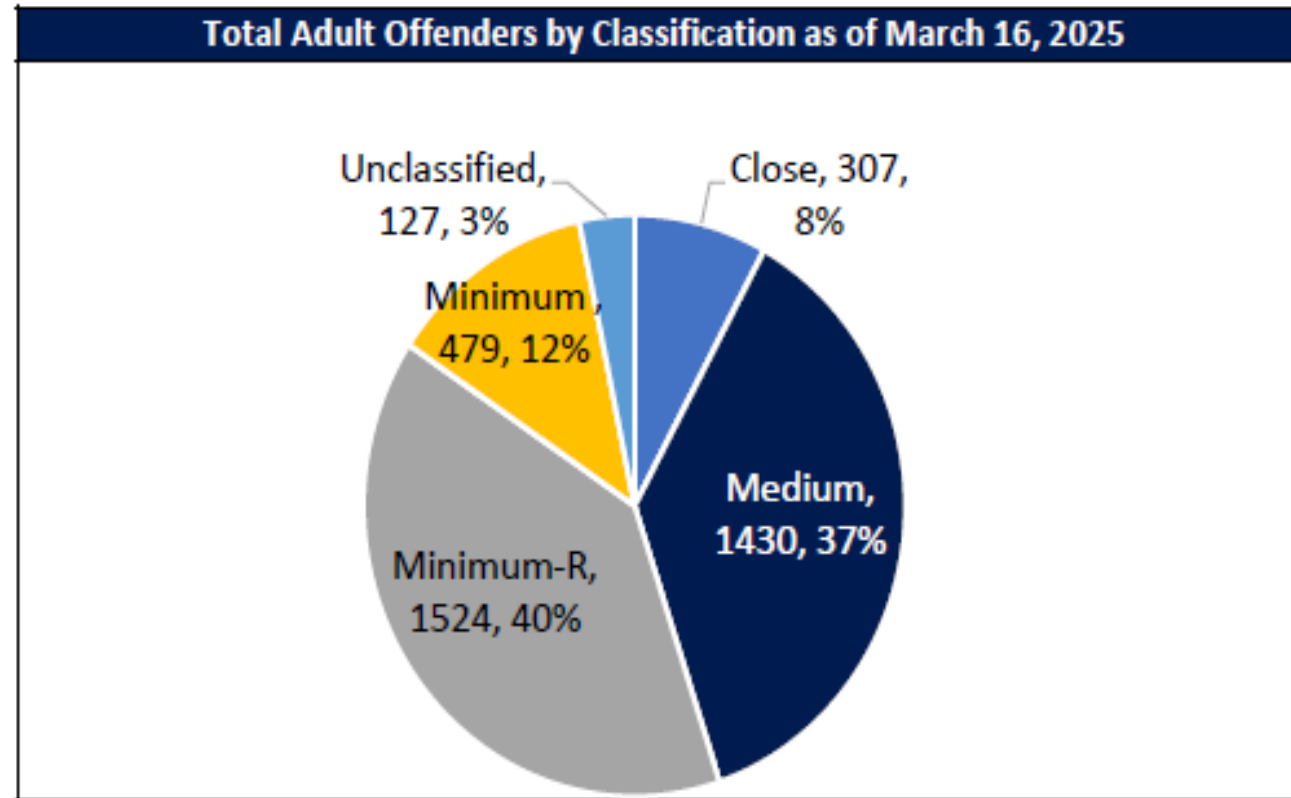
Medium Custody – Offenders who represent a moderate risk to the public and staff whom shall not work outside the secure perimeter of a Level III or higher facility. Require controlled movement.

Minimum –Restricted – Custody level for offenders who are suitable for minimum custody supervision within secure confinement without limited or controlled movement. May be housed at a Level II facility.

Minimum – Offenders who represent a low risk to the public and staff. These offenders are “gate pass eligible” and may work outside the secure perimeter of a facility to include work crews, work release and to attend local college programs/certifications.

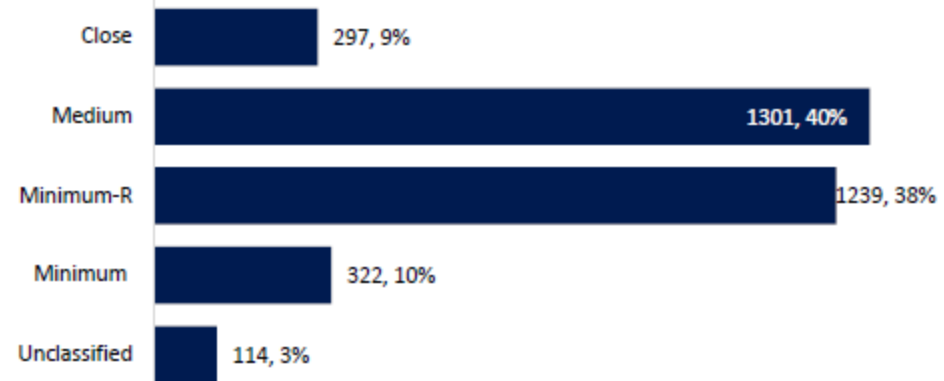


Offender Classification

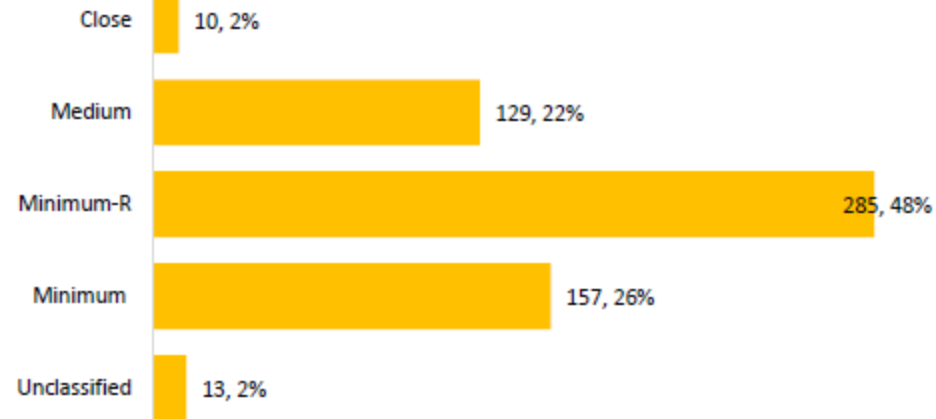


Offender Classification

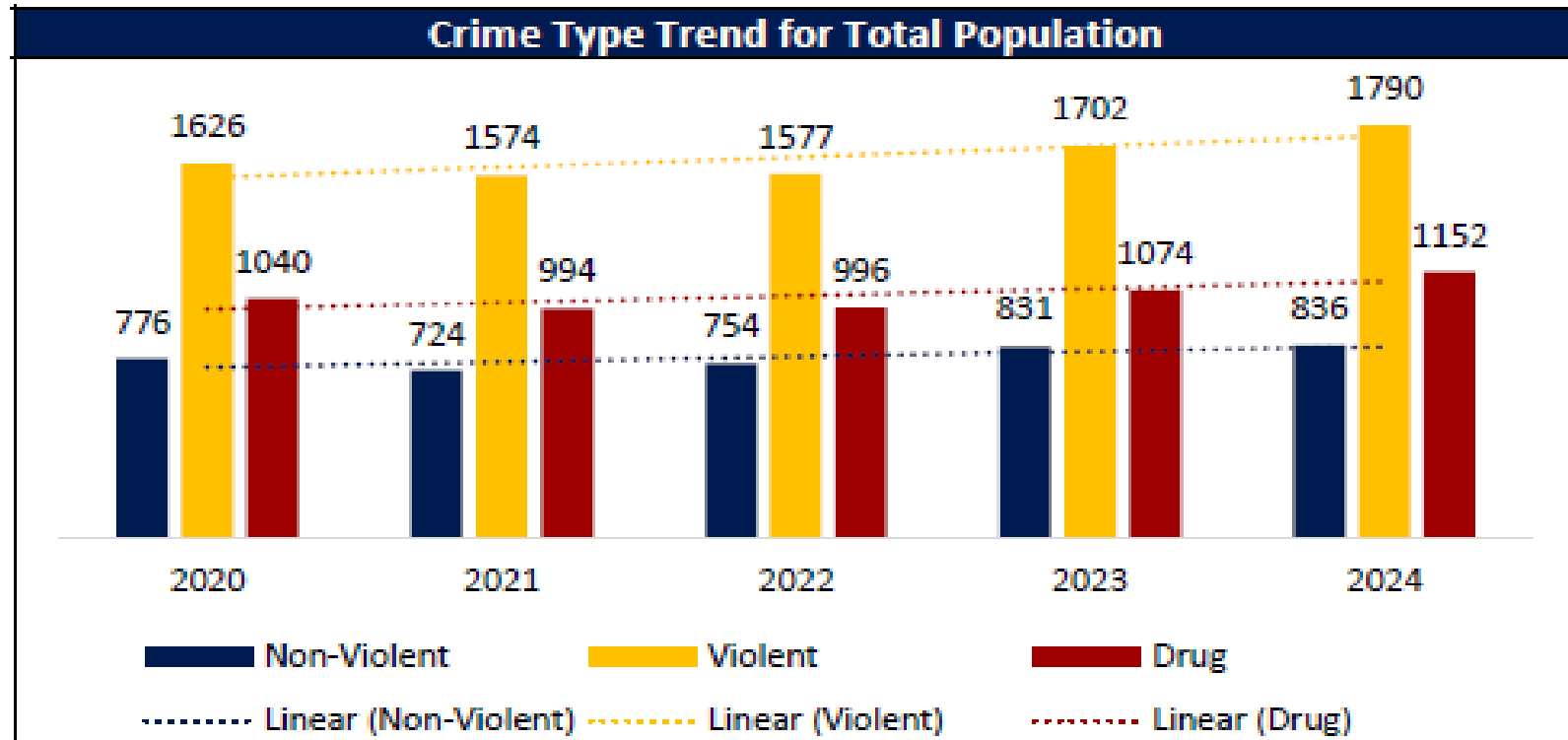
Adult Male Offenders by Classification as of March 16, 2025



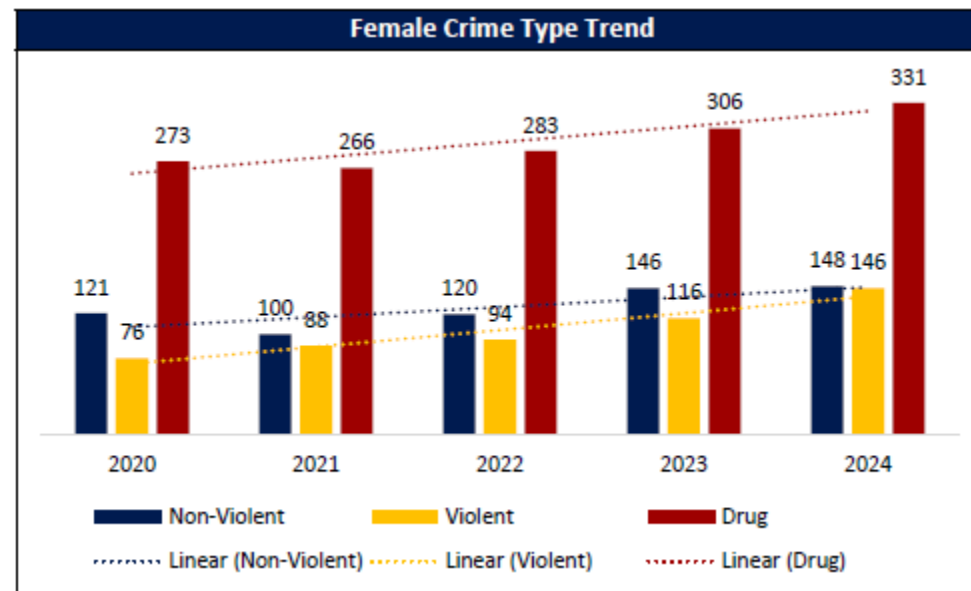
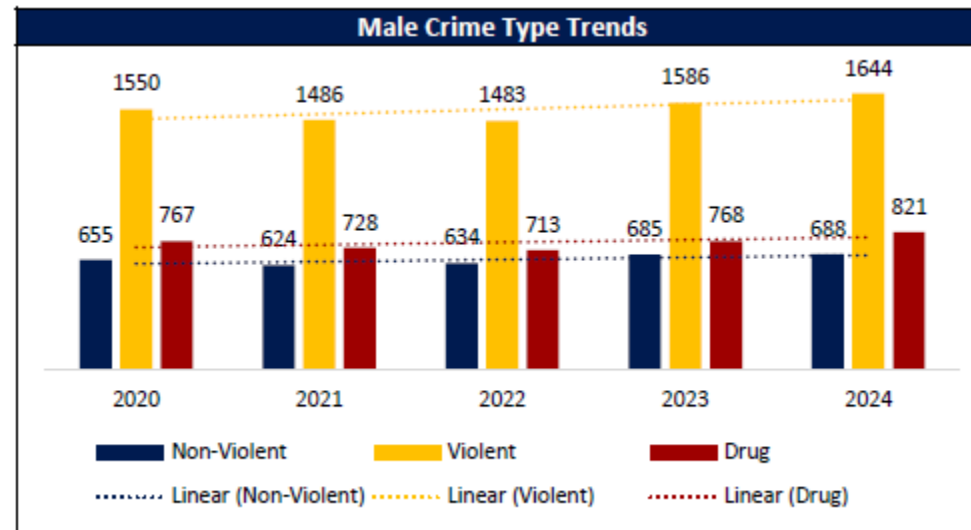
Adult Female Offenders by Classification as of March 16, 2025



Crime Type Trend – 5 Years



Crime Type Trend



Prison Bed - Planning and Projected Capacities

Figure 1.3: Projected State Correctional Facility Capacity			
	Design Capacity	6 Month FY2025 ADP	% Capacity
Level II			
Pierre Minimum Center		Decommissioned	
Rapid City Minimum Center	216	205	95%
Sioux Falls Minimum Center	80	76	95%
Yankton Minimum Center	192	172	90%
Level III			
Rapid City Correctional Facility	288	250	87%
Mike Durfee State Prison	963	898	93%
Level IV			
South Dakota State Penitentiary		Decommissioned	
Level V			
Lincoln County Correctional Facility	1584	1476	93%
SD Women's Prison	202	176	87%
Jameson Prison (Residential Treatment Program)	192	169	88%
Jameson Prison (Male)	384	354	92%
SDDOC Facilities Total	4101	3776	92%
Male	3419	3181	93%
Female	682	595	87%
Contracted Facilities Total (St. Francis House)		58	
Male		10	93%
Female		48	94%
Total Population/Capacity		3834	93%



SOUTH DAKOTA DEPARTMENT OF CORRECTIONS

Education and Programming



Educational Programs

Figure 5.22: Education Program Availability by Facility on June 30, 2024

	SDSP	SFMC	JPA	MDSP	YMC	RCMC	SDWP	SFH
Career and Technical Education (CTE)		*		*	*	*	*	
Auto Body				*				
Auto Mechanic				*				
Construction Technology Novice				*				
RTEC Welding					*			
Southeast Tech Welding		*						
Teknimedia						*		
Welding				*				
Western Dakota Tech Construction Technology						*		
Industry Certificate				*			*	
Department of Transportation Flagging Certification							*	
Inmate Carpentry Apprentice Program (ICAP) - Residential Wiring				*				
ICAP - Motors and Controls				*				
ICAP - Motors and Transformers				*				
Academic/GED	*	*	*	*	*	*	*	
General Educational Development (GED)	*	*	*	*	*	*	*	
Social Science Education	*	*	*	*	*	*	*	*
Common Sense Parenting							*	
Credit When Credit is Due	*	*	*	*	*		*	
Moving On (Female Specific Curriculum)							*	*
Prison Re-entry Program (PreP)	*	*		*	*	*		
Women's Opportunity Resource Development							*	



Educational Programs

Figure 5.25: Female Education Completions

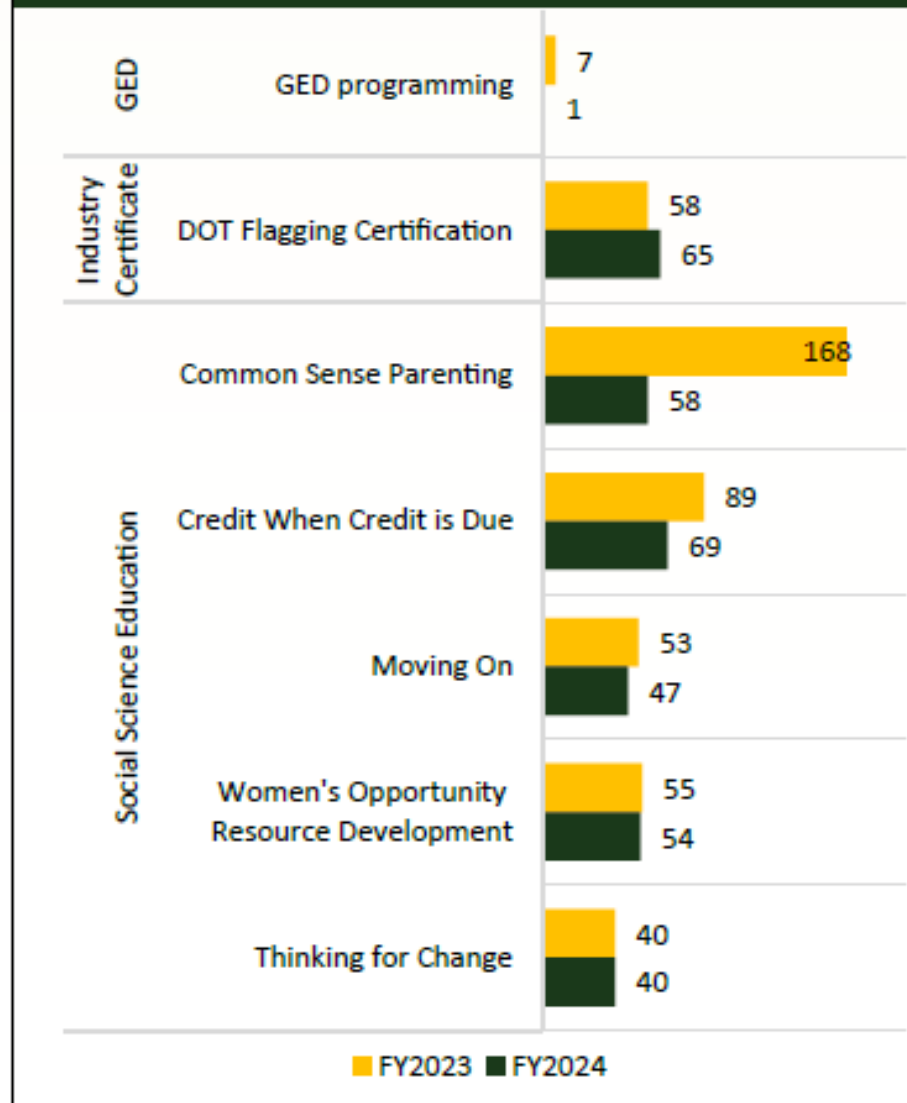
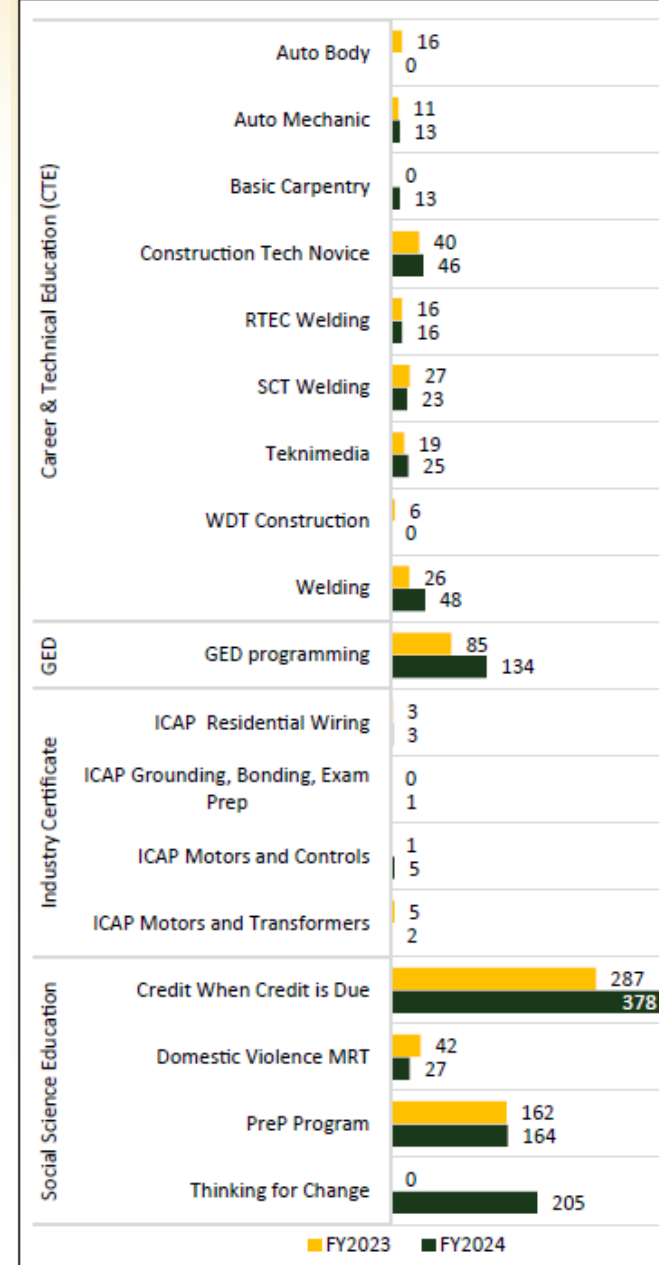


Figure 5.26: Male Education Completions



Educational Programs

Figure 5.27: Education Program Breakdown of Incompletions

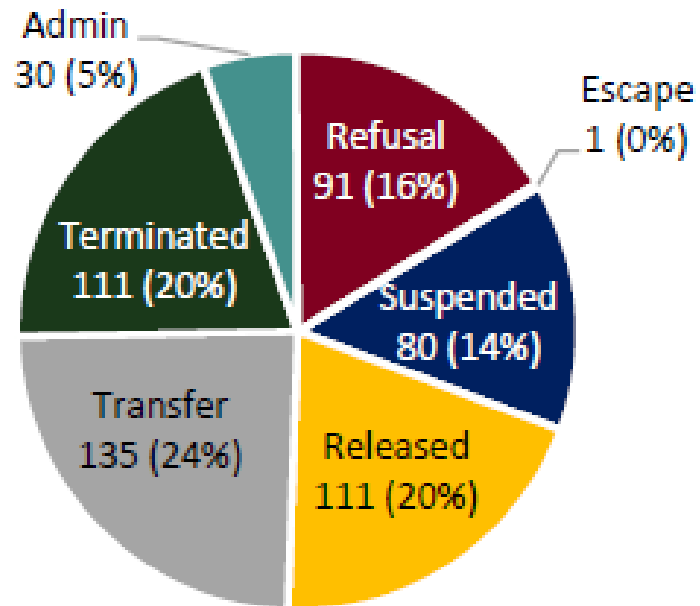
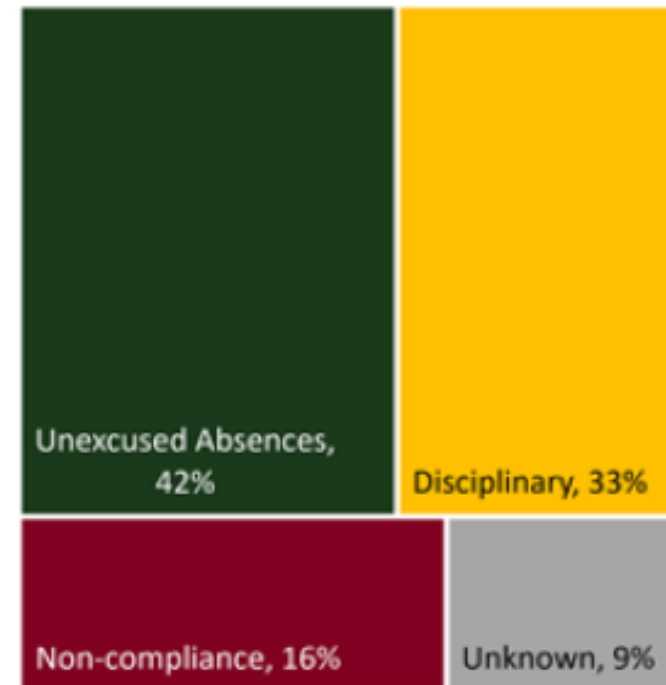


Figure 5.28: Education Termination Reasons



South Dakota State Penitentiary Faith Based Volunteer Programs for February 2025

AA/NA	36
Asatru Service	49
Asatru Study	73
Author of My Life - L.O.T.	28
AVP Weekend - Facilitator Training	18
AVP Weekend - Facilitator Training	16
Buddhist Meditation	36
Buddhist Study	27
C.O.G. Meeting	7
C.O.G. Training/Card Making	11
Catholic Bible Study	64
Catholic Mass	253
Centering Prayer	6
Cornerstone Bible Study	122
Cornerstone Leadership Meeting	4
Cornerstone Praise Team	28
Cornerstone Worship	371
Drum Practice for Inipi	5
Eastside Baptist Prayer Service	47
Empire Baptist Bible Study	88
Impact for Life	46
Jewish Havdalah	42
Jewish Shabbat	30
LDS Service	38
Leaders of Tomorrow	0

Leaders of Tomorrow Refresher	18
Messianic Havdalah	74
Messianic Shabbat	75
Muslim Jumah Prayer	51
Muslim Taleemul-Haqq	61
NACT Council Meeting	9
Native American Church	62
Prayer Ties	59
Prison Fellowship Academy	3
Protestant Services	89
Ramadam	24
SD Art Museum VTS	5
SPIN Crew Meeting (1st Fri)	6
St Dysmas Band/Choir Practice	27
St Dysmas Worship Service	345
St. Dysmas Bible Study	65
St. Dysmas Council Meeting	0
St. Dysmas Reentry Class	23
Sweat (Inipi)	13
Sweat (Inipi)	38
Sweat (Inipi)	36
Toastmasters	53
Wicca Service	30
Wicca Study	31



Behavioral Health Treatment Programs

Figure 5.15: Treatment Program Availability by Facility on June 30, 2024

	SDSP	SFMC	JPA	MDSP	YMC	RCMC	SDWP	SFH
Sex Offender		*	*	*			*	
SOMP Sex Offender Treatment		*	*	*			*	
Behavioral Health	*	*	*	*	*	*	*	*
Cognitive Behavioral Interventions for Substance Abuse (CBISA)	*		*	*	*	*	*	*
Cognitive Behavioral Interventions for Substance Abuse (CBISA) Pre-Treatment	*			*	*	*		
Dialectical Behavior Therapy (DBT)	*		*	*	*	*		*
Dialectical Behavior Therapy for Substance Abuse Disorders (DBT-SUD)				*				
Domestic Violence Moral Reconciliation Therapy (MRT)	*	*	*	*	*			
Resilience Group	*		*	*	*	*		
Moral Reconciliation Therapy (MRT)	*	*	*	*	*	*	*	*



Behavioral Health Treatment Programs

Figure 5.18: Male Behavioral Health Treatment Completions in FY2024

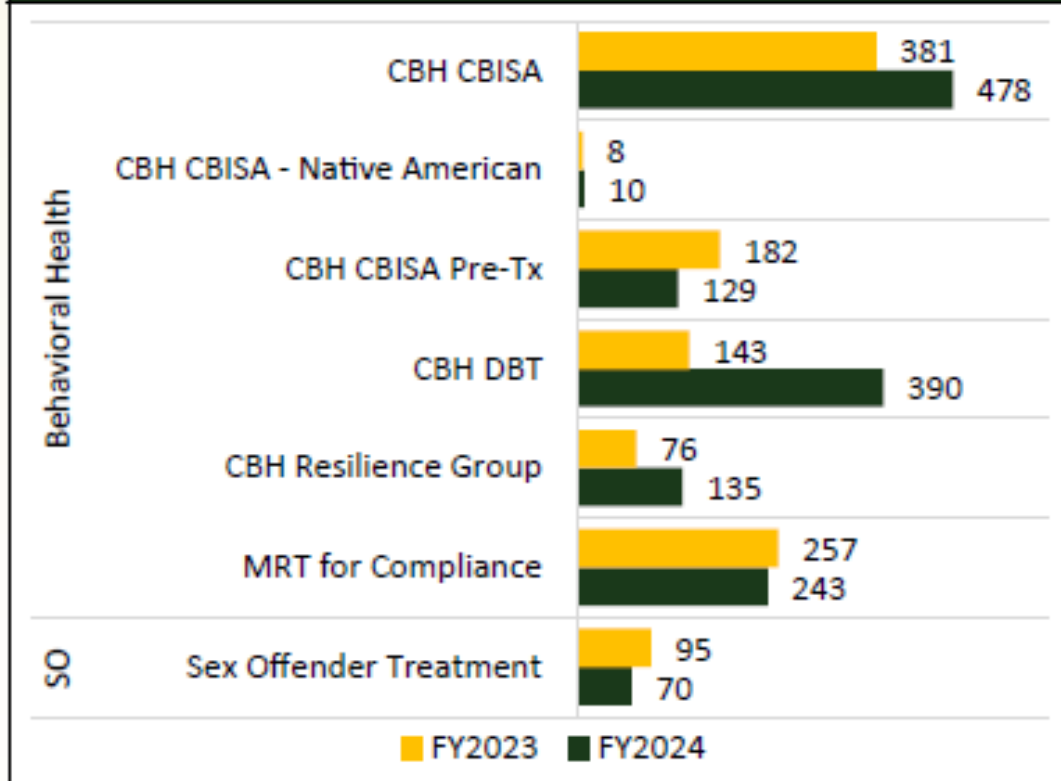
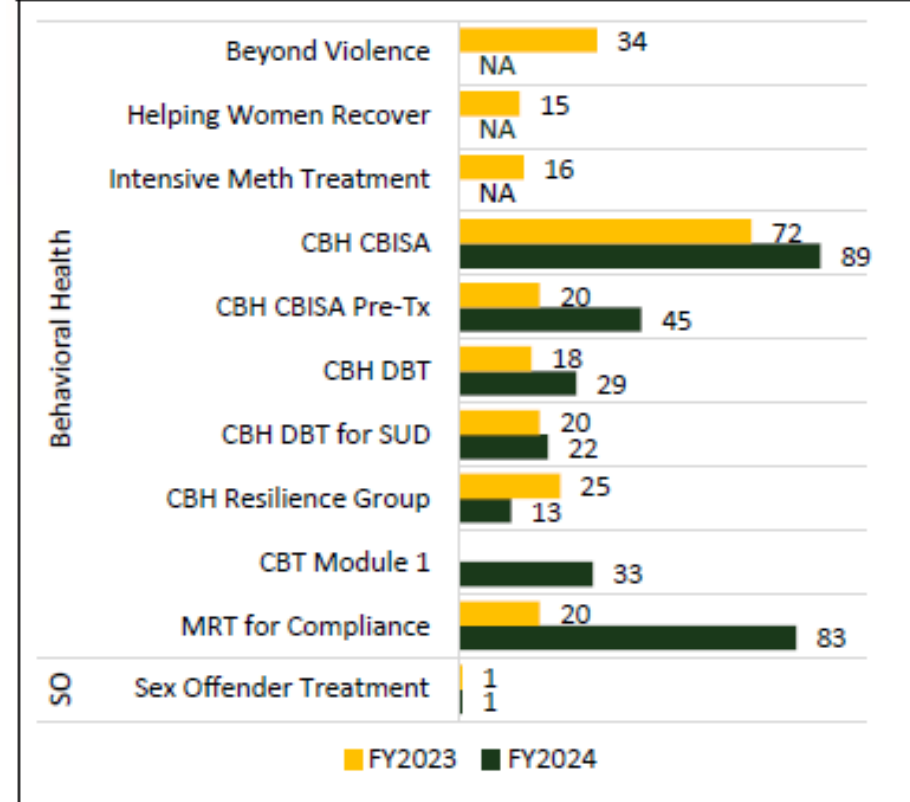


Figure 5.19: Female Behavioral Health Treatment Completions in FY2024



Curriculums and Treatment Currently Used

Moral Reconation Therapy (MRT)
Cognitive Behavioral Therapy (CBT)
Cognitive Behavioral Interventions for Substance Abuse (CBISA)
Dialectical Behavior Therapy (DBT)
Dialectical Behavior Therapy for Substance Abuse Disorders (DBT-SUD)
Adapted Dialectical Behavior Therapy (for special populations)
Illness Management and Recovery (IMR)
Integrated Cognitive Behavior Therapy (ICBT)
Mindfulness Oriented Recovery Enhancement (MORE)
START NOW
Moving On - females only (via Hazelden)
Helping Women Recover
Motivational Enhancement Therapy (MET)
Resilience Group/Seeking Safety
Intensive Meth Treatment
Womens Opportunity Resource Development



Curriculums and Treatment Currently Used

Thinking for Change (T4C)
Parenting Inside Out
Anger Management
Domestic Violence Moral Reconciliation (DV – MRT)
Sex Offender Pre-Treatment Programming
Beyond Violence – (females only)
Alternatives to Violence (AVP) Males and Females

Social Science Education:
Common Sense Parenting
Credit when credit is due
Moving On (Females Only)
Prison Re-entry Program (PreP)



Curriculums and Treatment in the Future

Planning for Implementation:

7 Habits on the Inside

New Freedom (SUD)

Matrix for stimulant use disorder (SAMHSA version)

Matrix for general SUD (Hazelden version)

Candis Curriculum

A New Direction - A Cognitive Behavioral Therapy Program



CORRECTIONS

	Current SDSP	New Design
Education	8,375	16,905
Vocational	-	27,467
Pheasantland Industries	48,900	67,603
Programming in Units	-	5,525
Behavioral Health	-	8,575
Total	57,275	126,075



Current Assets to the DOC and State





West Farm – 66 acres



Brighter Transition- A transitional group care facility for DOC youth only, licensed for up to 32 beds. Currently housing 17 DOC youth.

Falls Academy – located across from the Brighter campus and is a front end group care facility for boys and girls. Doc and DSS use this facility for placement and is licensed for 36 beds. Currently housing 11 DOC youth.



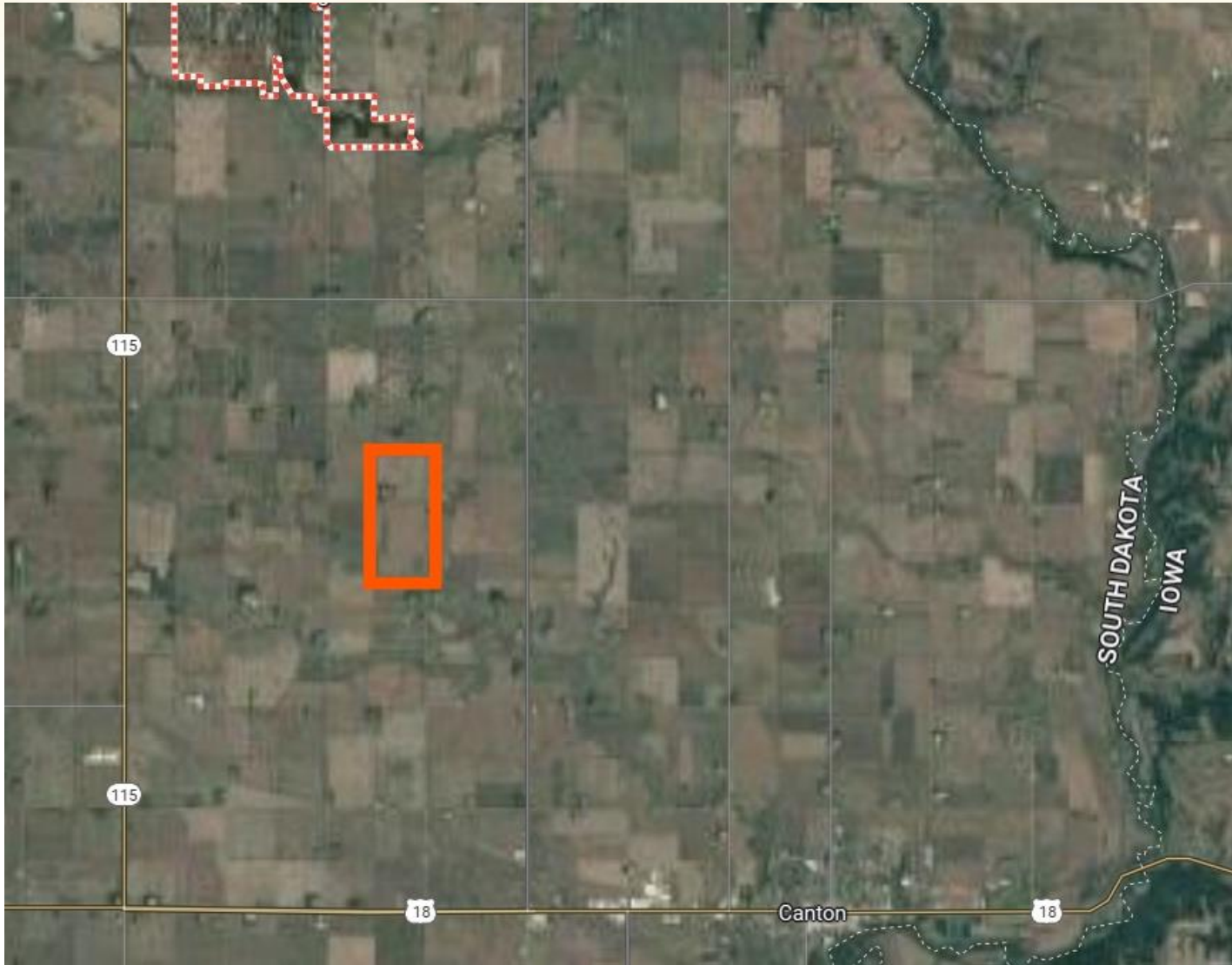
North Farm – 28.65 acres



Rapid City– Approximately 6.0 acres



Lincoln County Property



320 acres divided into 2 parcels
1 parcel assessed and currently
designed



Where are things at Lincoln County Property

- \$62 million in expenditure authorization
 - \$52 million in General Funds (HB1017 of 2023)
 - \$10 million in ARPA (SB 49 of 2024)
- Three buckets
 - Funding spent
 - Funding contracted for
 - Funding available
- Some assets transferrable to a new location



Where are things at: Lincoln County Infrastructure Costs

- Southeastern Rural Electric- \$4.1 million
 - \$400,000 paid
 - \$126,000 in kind (substation easement)
 - \$3.4 million substation (2026 delivery, can relocate)
- Water- South Lincoln Rural Water
 - \$1,575,000 capacity purchase paid
 - \$1,575,000- line upgrades (in process)
 - Water loop will serve future development



Where are things at: Lincoln County Infrastructure Costs

- City of Lennox Sewer Agreement
\$10,500,000 paid
\$10 million ARPA- deadline was 12/31/2024
\$500,000 general funds
- Mid American Natural Gas
Master meter hub south of Harrisburg \$0 paid
- Road- DOT road study paused
 - Initial draft shows three options





Thank you!