

Agenda

State Conservation Commission

Thursday, January 29, 2026, 2:00 PM Central Time, Teleconference

This meeting will be accessible virtually via Microsoft Teams by clicking this link [Join the meeting now](#) or dialing 1.605.679.7263. When prompted for an access code, then dial 186.333.654 followed by #. We ask the participants mute their microphones or phones when they are not speaking.

<ul style="list-style-type: none">• <u>Conflict of Interest Disclosures</u>	Commission
<ul style="list-style-type: none">• Introductions• Call to Order/Election of Officers• Approval of November Minutes• Corrections/Approval of Past and Upcoming Travel Grassland Summit-March 3, 2026 Mitchell• Speech Contest Judge• Request for New Business to be Placed on the Agenda• Correspondence	Division of Resource Conservation & Forestry Staff/Chair Commission
<ul style="list-style-type: none">• Loan Report & Revolving Loan Applications	Jordan Turgeon
<ul style="list-style-type: none">• Grant Program/Updates/Changes/Amendments/Reports	Alex Roeber
<ul style="list-style-type: none">• Spring Grant Round Date (April)	Commission
<ul style="list-style-type: none">• Natural Resource Award Nominations	Commission
<ul style="list-style-type: none">• Division Report (if time permits)	Paul Lorenzen
<ul style="list-style-type: none">• Advisory Board Member Reports: (SD School & Public Lands, GFP, NRCS, SDSU Extension Service, SDSU Experiment Station) **Other Partners	Advisory Board Members
<ul style="list-style-type: none">• <u>Open Forum and Public Comment</u>	All
<ul style="list-style-type: none">• New Business• Next Meeting location and place (March or April)• Ending Remarks & Adjourn	Chair

Additional Instructions:

Advisory Board members are encouraged to submit a written report to Jordan Turgeon (jordan.turgeon@state.sd.us) one week prior to the meeting. **All grant amendments need to be received by January 20.

To be included in the public record, written comments must include a full name and city of residence and meeting the submission deadline of seventy-two hours before the meeting. All commenters are required to state their name and address (city) BEFORE being allowed to speak.

This meeting is being held in a physically accessible place. Individuals needing assistance, pursuant to the Americans with Disabilities Act, should contact the Division of Resource Conservation and Forestry (605.773.3623) at least 48 hours in advance of the meeting to make any necessary arrangements.

Individuals requiring assistive technology or other services in order to participate in the meeting or materials in an alternate format should contact Brian Walsh, Nondiscrimination Coordinator, by calling (605) 773-5559 or by email at Brian.Walsh@state.sd.us as soon as possible but no later than two business days prior to the meeting in order to ensure accommodations are available.

**State Conservation Commission
November 17, 2025 Matthews Training Center
523 East Capitol Ave, Pierre**

Call to Order: Chairman Doug Hansen called the meeting to order at 8:19 AM CST.

Roll Call of Members Present: Gene Williams, Tom Glover, Dusty Rodiek, Dean Odden, Bruce Haines, Duane Schneider, Bill Coburn, and Doug Hansen, Charlie Moe.

Absent: None.

Others Present: Bill Smith (DANR), Alex Roeber (DANR), Jordan Turgeon (DANR), Paul Lorenzen (DANR), April Reiter (DANR), Angela Ehlers (SDACD), Zach Zimprich (Brule-Buffalo Conservation District), Tanya Flegel (Kingsbury Conservation District), Tami Moore (Miner Conservation District), Hanna Peterson (Sanborn Conservation District) Eric Hanson (Lawrence Conservation District), and David Smith (Farmers Union)

Others present via Teams: Yvette Kirkman (Butte Conservation District), Robin Viestenz (Beadle Conservation District), Dawn Schulte (Charles Mix Conservation District), Annie Walker (Corson Conservation District), Angie Jones (Dewey Conservation District), Peggy Loomis (Hamlin Conservation District), Jewell Bork (Mellette Conservation District), Mike Baldwin (Custer Conservation District), Kat Rowe (DANR), Patricia Weyrich (DANR), Patty Beck (Bennett and Badlands conservation districts), Eva Chase (Pennington Conservation District), Jody Hauge (Aurora Conservation District), Allison Kiner (DANR), Josh Wagner (Day Conservation District), Lisa Sall (Jerauld Conservation District), Amy Sis (Grant Conservation District), Meshele Townsend (Edmunds Conservation District), and Molly Hauck (Bon Homme Conservation District).

Conflict of Interest Disclosure: None.

Approval of the September 22, 2025, Minutes: A motion was made by Dusty Rodiek and seconded to approve the September 22, 2025, meeting minutes as submitted. Roll call vote: Gene Williams-aye Doug Hansen-aye, Tom Glover-aye, Dusty Rodiek-aye, Charlie Moe-aye, Dean Odden-aye, Bruce Haines-aye, Duane Schneider-aye, Doug Hansen-aye, Bill Coburn-aye, and Charlie Moe-aye. **Motion carried.**

Request for new business to be placed on the agenda: None.

Upcoming travel: Bill Smith provided the list of upcoming meetings. **A motion was made by Gene Williams and seconded to send Duane Schneider to the Grasslands Coalition convention in Box Elder on December 4 – 5 and Bruce Haines to the Nutrient Research and Education Council (NREC) meeting in Brookings on December 11.** Roll call vote: Tom Glover-aye, Bruce Haines-abstain, Gene Williams-aye, Charlie Moe-nay, Dean Odden-aye, Duane Schneider-abstain, Bill Coburn-aye, Dusty Rodiek-aye, and Doug Hansen-aye. **Motion carried.**

Correspondence: Bill Smith informed the commission that Jason Weinerman from Stewardship Systems emailed the commission and the division. A copy of the email was shared with the commission.

Grant Program/Updates: Alex Roeber provided the commission with an update on the grants program.

Grant Extensions and Amendments

A motion was made by Bruce Haines and seconded to approve Bon Homme Conservation District's 2024-CSW-001 BH Conservation Enhancement grant and for the Charles Mix Conservation District's 2025-CSW-008 Shelterbelt grant to use the 2025 docket. Roll call vote: Tom Glover-aye, Bruce Haines-aye, Gene Williams-aye, Charlie Moe-nay, Dean Odden-aye, Duane Schneider-aye, Bill Coburn-aye, Dusty Rodiek-aye, and Doug Hansen-aye. **Motion carried.**

A motion was made by Dusty Rodiek and seconded to approve the Butte Conservation District's 2025-CSW-005 Multi-County Ditch to Pipe Conversion grant for a six-month extension. Roll call vote: Tom Glover-aye, Bruce Haines-aye, Gene Williams-aye, Charlie Moe-aye, Dean Odden-aye, Duane Schneider-aye, Bill Coburn-aye, Dusty Rodiek-aye, and Doug Hansen-aye. **Motion carried.**

A motion was made by Gene Williams and seconded to approve the Pennington Conservation District's 2025-CSW-032 Black Hill's Forest Stewardship Plans grant to add Fall River County. Roll call vote: Tom Glover-aye, Bruce Haines-aye, Gene Williams-aye, Charlie Moe-aye, Dean Odden-aye, Duane Schneider-aye, Bill Coburn-aye, Dusty Rodiek-aye, and Doug Hansen-aye. **Motion carried.**

A motion was made by Duane Schneider and seconded to approve the Perkins Conservation District's 2025-CSW-024 NWA Tree Planting grant for a one-year extension. Roll call vote: Tom Glover-aye, Bruce Haines-aye, Gene Williams-aye, Charlie Moe-aye, Dean Odden-aye, Duane Schneider-aye, Bill Coburn-aye, Dusty Rodiek-aye, and Doug Hansen-aye. **Motion carried.**

A motion was made by Tom Glover and seconded to revert \$133,195.63 from expired grants and made available for new grant applications. Roll call vote: Gene Williams-aye, Tom Glover, Dusty Rodiek-aye, Charlie Moe-aye, Dean Odden-aye, Bruce Haines-aye, Duane Schneider-aye, Doug Hansen-aye, and Bill Coburn-aye. **Motion carried.**

Fall Grant Round: There was a total of twenty-six grant applications received for consideration. The below reflects the alphabetical order of the grants as submitted by conservation districts rather than in chronological order in which they were acted upon.

A motion was made by Gene Williams and seconded to approve the Aurora Conservation District's Shelterbelts Grant application in the amount of \$12,500. Roll call vote: Tom Glover-aye, Bruce Haines-aye, Gene Williams-aye, Charlie Moe-aye, Dean Odden-aye, Dusty Rodiek-aye, Doug Hansen-aye, Bill Coburn-aye, and Duane Schneider-aye. **Motion carried.**

A motion was made by Bruce Haines and seconded to approve the Beadle Conservation District's Livestock Water Grant application in the amount of \$51,325. Roll call vote: Gene Williams-aye, Tom Glover-aye, Dusty Rodiek-aye, Charlie Moe-aye, Dean Odden-aye, Doug Hansen-aye, Bruce Haines-aye, Bill Coburn-aye, and Duane Schneider-aye. **Motion carried.**

A motion was made by Bruce Haines and seconded to approve the Beadle Conservation District's Shelterbelt Program 2025 Grant application in the amount of \$9,300. Roll call vote: Gene Williams-aye, Tom Glover-aye, Dusty Rodiek-aye, Charlie Moe-aye, Dean Odden-aye, Doug Hansen-aye, Bruce Haines-aye, Bill Coburn-aye, and Duane Schneider-aye. **Motion carried.**

A motion was made by Gene Williams and seconded to approve the Bennett/Badlands Conservation District's Tree Planting Grant application in the amount of \$11,914. Roll call vote: Gene Williams-aye, Tom Glover-aye, Dusty Rodiek-aye, Charlie Moe-aye, Dean Odden-aye, Doug Hansen-aye, Bruce Haines-aye, Bill Coburn-aye, and Duane Schneider-aye. **Motion carried.**

A motion was made by Bill Coburn and seconded to approve the Brule/Buffalo Conservation District's Multi-County Brush Management Grant application in the amount of \$18,250. Roll call vote: Gene Williams-aye, Tom Glover-aye, Dusty Rodiek-aye, Charlie Moe-aye, Dean Odden-aye, Doug Hansen-aye, Bruce Haines-aye, Bill Coburn-aye, and Duane Schneider-aye. **Motion carried.**

A motion was made by Charlie Moe and seconded to approve the Brule/Buffalo Conservation District's Renovation & Tree Planting Grant application in the amount of \$50,000. Roll call vote: Gene Williams-aye, Tom Glover-aye, Dusty Rodiek-aye, Charlie Moe-aye, Dean Odden-aye, Doug Hansen-aye, Bruce Haines-aye, Bill Coburn-aye, and Duane Schneider-aye. **Motion carried.**

A motion was made by Dusty Rodiek and seconded to approve the Butte Conservation District's Multi-County Ditch to Pipe Conversion Grant application in the amount of \$30,000. Roll call vote: Gene Williams-aye, Tom Glover-aye, Dusty Rodiek-aye, Charlie Moe-aye, Dean Odden-aye, Doug Hansen-aye, Bruce Haines-aye, Bill Coburn-aye, and Duane Schneider-aye. **Motion carried.**

A motion was made by Gene Williams and seconded to approve the Charles Mix Conservation District's Brush Management Grant application in the amount of \$21,875. Roll call vote: Gene Williams-aye, Tom Glover-abstain, Dusty Rodiek-aye, Charlie Moe-aye, Dean Odden-aye, Doug Hansen-aye, Bruce Haines-aye, Bill Coburn-aye, and Duane Schneider-aye. **Motion carried.**

A motion was made by Tom Glover and seconded to approve the Charles Mix Conservation District's Shelterbelt Grant application in the amount of \$18,000. Roll call vote: Gene Williams-aye, Tom Glover-aye, Dusty Rodiek-aye, Charlie Moe-aye, Dean Odden-aye, Doug Hansen-aye, Bruce Haines-aye, Bill Coburn-aye, and Duane Schneider-aye. **Motion carried.**

A motion was made by Bruce Haines and seconded to approve the Corson Conservation District's Tree Grant application in the amount of \$20,400. Roll call vote: Gene Williams-aye, Tom Glover-aye, Dusty Rodiek-aye, Charlie Moe-aye, Dean Odden-aye, Doug Hansen-aye, Bruce Haines-aye, Bill Coburn-aye, and Duane Schneider-aye. **Motion carried.**

A motion was made by Dusty Rodiek and seconded to approve the Davison Conservation District's Micro irrigation Grant application in the amount of \$5,000. Roll call vote: Gene Williams-aye, Tom Glover-aye, Dusty Rodiek-aye, Charlie Moe-aye, Dean Odden-aye, Doug Hansen-aye, Bruce Haines-abstain, Bill Coburn-aye, and Duane Schneider-aye. **Motion carried.**

A motion was made by Gene Williams and seconded to approve the Davison Conservation District's Davison/Hanson Tree Planting Grant application in the amount of \$20,000. Roll call vote: Gene Williams-aye, Tom Glover-aye, Dusty Rodiek-aye, Charlie Moe-aye, Dean Odden-aye, Doug Hansen-aye, Bruce Haines-abstain, Bill Coburn-aye, and Duane Schneider-aye. **Motion carried.**

A motion was made by Bruce Haines and seconded to approve the Dewey Conservation District's Windbreak/Shelterbelt Grant application in the amount of \$4,878. Roll call vote: Gene Williams-aye, Tom Glover-aye, Dusty Rodiek-aye, Charlie Moe-aye, Dean Odden-aye, Doug Hansen-aye, Bruce Haines-aye, Bill Coburn-aye, and Duane Schneider-aye. **Motion carried.**

A motion was made by Charlie Moe and seconded to approve the Fall River Conservation District's Forest Resiliency Project Grant application in the amount of \$15,000. Roll call vote: Gene Williams-aye, Tom Glover-aye, Dusty Rodiek-aye, Charlie Moe-aye, Dean Odden-aye, Doug Hansen-aye, Bruce Haines-aye, Bill Coburn-aye, and Duane Schneider-aye. **Motion carried.**

A motion was made by Charlie Moe and seconded to approve the Hamlin Conservation District's 2026 Tree Plantings Grant application in the amount of \$11,033. Roll call vote: Gene Williams-aye, Tom Glover-aye, Dusty Rodiek-aye, Charlie Moe-aye, Dean Odden-aye, Doug Hansen-aye, Bruce Haines-aye, Bill Coburn-aye, and Duane Schneider-aye. **Motion carried.**

A motion was made by Dusty Rodiek and seconded to approve the Hughes Conservation District's Conservation 2025-2027 HCCD Tree Initiative Grant application in the amount of \$15,000. Roll call vote: Gene Williams-aye, Tom Glover-aye, Dusty Rodiek-aye, Charlie Moe-aye, Dean Odden-aye, Doug Hansen-aye, Bruce Haines-aye, Bill Coburn-aye, and Duane Schneider-aye. **Motion carried.**

A motion was made by Charlie Moe and seconded to approve the Hutchinson Conservation District's HCD Shelterbelt Grant application in the amount of \$11,000. Roll call vote: Gene Williams-aye, Tom Glover-aye, Dusty Rodiek-aye,

Charlie Moe-aye, Dean Odden-aye, Doug Hansen-aye, Bruce Haines-aye, Bill Coburn-aye, and Duane Schneider-aye. **Motion carried.**

A motion was made by Bruce Haines and seconded to approve the Jerauld Conservation District's Multipurpose Grant application in the amount of \$41,996.50. Roll call vote: Gene Williams-aye, Tom Glover-aye, Dusty Rodiek-aye, Charlie Moe-aye, Dean Odden-aye, Doug Hansen-aye, Bruce Haines-aye, Bill Coburn-aye, and Duane Schneider-aye. **Motion carried.**

A motion was made by Gene Williams and seconded to approve the Kingsbury Conservation District's Conservation Multi Practice Grant application in the amount of \$69,000. Roll call vote: Gene Williams-aye, Tom Glover-aye, Dusty Rodiek-aye, Charlie Moe-aye, Dean Odden-aye, Doug Hansen-aye, Bruce Haines-aye, Bill Coburn-aye, and Duane Schneider-aye. **Motion carried.**

A motion was made by Dean Odden and seconded to approve the Lawrence Conservation District's Forest Resiliency Project Grant application in the amount of \$93,000. Roll call vote: Gene Williams-aye, Tom Glover-aye, Dusty Rodiek-aye, Charlie Moe-aye, Dean Odden-aye, Doug Hansen-aye, Bruce Haines-aye, Bill Coburn-aye, and Duane Schneider-aye. **Motion carried.**

A motion was made by Dusty Rodiek and seconded to approve the Lincoln Conservation District's Conservation Windbreak Renovation Spring 2026 grant application in the amount of \$2,750. Roll call vote: Gene Williams-aye, Tom Glover-aye, Dusty Rodiek-aye, Charlie Moe-aye, Dean Odden-aye, Doug Hansen-aye, Bruce Haines-aye, Bill Coburn-aye, and Duane Schneider-aye. **Motion carried.**

A motion was made by Gene Williams and seconded to approve the Mellette Conservation District's 2025 MC Multi-Practice Grant application in the amount of \$40,000.

A motion to amend the previous motions was made by Dusty Rodiek and seconded to exclude cost-share for fabricated windbreaks in the Mellette Conservation District's 2025 MC Multi-Practice Grant application. Roll call vote: Gene Williams-aye, Tom Glover-aye, Dusty Rodiek-aye, Charlie Moe-aye, Dean Odden-aye, Doug Hansen-aye, Bruce Haines-aye, Bill Coburn-aye, and Duane Schneider-aye. **Motion carried.**

The vote on the amended motion to fund the Mellette Conservation District's 2025 MC Multi-Practice Grant for \$40,000 as amended. Roll call vote: Gene Williams-aye, Tom Glover-aye, Dusty Rodiek-aye, Charlie Moe-abstain, Dean Odden-aye, Doug Hansen-aye, Bruce Haines-aye, Bill Coburn-nay, and Duane Schneider-aye. **Motion carried.**

A motion was made by Charlie Moe and seconded to approve the Miner Conservation District's 2026 SDACDE Promoting Conservation in 2025 Grant in the amount of \$8,200. Roll call vote: Gene Williams-aye, Tom Glover-aye, Dusty Rodiek-aye, Charlie Moe-aye, Dean Odden-aye, Doug Hansen-aye, Bruce Haines-aye, Bill Coburn-aye, and Duane Schneider-aye. **Motion carried.**

A motion was made by Charlie Moe and seconded to approve the Miner Conservation District's Conservation Practices for Miner County Grant in the amount of \$29,975. Roll call vote: Gene Williams-aye, Tom Glover-aye, Dusty Rodiek-aye, Charlie Moe-aye, Dean Odden-aye, Doug Hansen-aye, Bruce Haines-aye, Bill Coburn-aye, and Duane Schneider-aye. **Motion carried.**

A motion was made by Gene Williams and seconded to approve the Perkins Conservation District's Perkins County Tree Planting Grant in the amount of \$3,740.10. Roll call vote: Gene Williams-aye, Tom Glover-aye, Dusty Rodiek-aye, Charlie Moe-aye, Dean Odden-aye, Doug Hansen-aye, Bruce Haines-aye, Bill Coburn-aye, and Duane Schneider-aye. **Motion carried.**

A motion was made by Charlie Moe and seconded to approve the Sanborn Conservation District's Conservation Reborn in Sanborn Grant in the amount of \$2,850. Roll call vote: Gene Williams-aye, Tom Glover-aye, Dusty Rodiek-aye, Charlie Moe-aye, Dean Odden-aye, Doug Hansen-aye, Bruce Haines-aye, Bill Coburn-aye, and Duane Schneider-aye. **Motion carried.**

Revolving Loan Report: Jordan Turgeon provided the revolving loan report.

2026 Cost Share Docket: A motion was made by Bruce Haines and seconded to accept the South Dakota Association of Conservation District Employees recommendation to increase the cost of trees and shrubs to \$0.60 per linear foot, handplants to \$3.00 per bareroot tree and \$4.00 per container tree, fabric installation to \$0.90 per linear foot, and the cost share rate to 40% for both below ground removal and above ground removal for shelterbelt renovation. Roll call vote: Gene Williams-aye, Tom Glover-aye, Dusty Rodiek-aye, Charlie Moe-aye, Dean Odden-aye, Doug Hansen-aye, Bruce Haines-aye, Bill Coburn-aye, and Duane Schneider-aye. **Motion carried.**

A motion was made by Bruce Haines and seconded to change the docket for grazing management prices as recommended by the Custer Conservation District. Motion was withdrawn.

A motion was made by Bruce Haines and seconded to extend further changes to the docket until the April meeting. Roll call vote: Gene Williams-aye, Tom Glover-aye, Dusty Rodiek-aye, Charlie Moe-aye, Dean Odden-aye, Doug Hansen-aye, Bruce Haines-aye, Bill Coburn-aye, and Duane Schneider-aye. **Motion carried.**

2026 Guidelines and Priorities: No action.

Commission Member Reports: Doug Hansen attended the Coteau Area Legislative Banquet in Webster on October 20.

Division Report: Paul Lorenzen updated the Commission on division activities.

Advisory Board Members Reports: Angela Ehlers provided SDACD report. Tami Morre provided a SDACDE report.

Open Forum and Public Comment: None.

Next Meeting location and place: The next commission meeting and time will be determined.

Ending Remarks: None.

Chairman Hansen declared the meeting adjourned at 12:17 PM CST.

Upcoming Travel & Meetings

January 2026

- State Conservation Commission Meeting – TBA
- Game, Fish and Parks Commission Meeting – January 8 – 9 – Pierre/Zoom.
- _____

February 2026

- Ag Fest – February 2 – Ramkota, Pierre._____
- Game, Fish and Parks Commission Meeting – No meeting.
- NACD Annual Meeting – February 15 – 19 – San Antonio, Texas.
- South Dakota Local Work Group Training Session for NRCS Resource Unit Conservationists & State Leaders with Ray Ledgerwood – February 23 – 24 – Americilnn – Chamberlain Conference Center.

March 2026

- South Dakota Grasslands Summit - March 3 – 4 – Mitchell.
- Game, Fish and Parks Commission Meeting – March 5 – 6 – Pierre/Zoom.
- Local Led Meetings – March 23 – 27 (exact dates and location to be determined).
- State Conservation Speech Contest Finals - March 28 at 9:00 AM Central – Room 414, State Capitol, Pierre.
- _____

April 2026

- State Conservation Commission Meeting (Spring Grant Round) – TBD – Pierre.
- Game, Fish and Parks Commission Meeting – April 9 – 10 – Pierre/Zoom.
- _____
- _____
- _____

SCHEDULE OF PAYMENTS, CONSERVATION DISTRICT REVOLVING LOAN FUND
Scheduled Payments for Fiscal Year 2026
(July 1, 2025 through June 30 2026)

Accumulated Interest Since 1965

\$	225,828.66
\$	169,335.70

Accumulated Interest from HB1210 (2022)

Accumulated Loans Since 1965

\$	4,020,359.43
----	--------------

RCF LOAN NUMBER	AG DEV LOAN NUMBER	DATE OF LOAN	CONSERVATION DISTRICT	PURPOSE OF LOAN	AMOUNT OF ORIGINAL LOAN	Amount of loan with Interest	PAYMENT DUE THIS FISCAL YEAR	MONTH DUE	MONTH PAID	PRINCIPAL PAID	INTEREST PAID	Total Paid	EXTRA PAID	TOTAL CURRENTLY OUTSTANDING
<i>New Loans This Fiscal Year</i>														
1121		07/24/2025	Clark	Vehicle Purchase	\$ 30,000.00	\$ 31,260.76	\$ 10,605.91	04/01/2026						
1122		07/24/2025	Roberts	Tractor Refinance	\$ 80,000.00	\$ 85,203.36	\$ 17,468.37	04/01/2026						
1123		07/24/2025	Brule Buffalo	Skid Steer Purchase	\$ 65,000.00	\$ 69,684.97	\$ 14,193.05	04/01/2026						
1124		07/24/2025	Minnehaha	Drill Refinance	\$ 40,000.00	\$ 42,883.06	\$ 8,734.18	04/01/2026						
1125		09/22/2025	Minnehaha	Bobcat Purchase	\$ 36,400.00	\$ 36,261.82	\$ 7,948.11	06/01/2025						
<i>Pending Loan Applications</i>														
			Butte	No-Till Drill	\$ 8,400.00									
<i>Loans Closing This Fiscal Year</i>														
						Fully Paid Amount								
1086		05/10/2021	Butte	No Till Drill	\$ 24,500.00	\$ 26,226.89			08/26/2025	\$ 5,092.59	\$ 152.78	\$ 5,245.37		
1087		05/21/2021	Day	Tractor	\$ 20,000.00	\$ 21,374.36			08/14/2025	\$ 4,150.29	\$ 124.51	\$ 4,274.80		
1089		05/21/2021	Kingsbury	Drill	\$ 7,500.00	\$ 8,009.59			09/16/2025	\$ 1,458.24	\$ 43.75	\$ 1,501.99		
1091		11/10/2021	Kingsbury	No Till Drill	\$ 7,500.00	\$ 8,016.92			07/14/2025	\$ 1,215.76	\$ 36.47	\$ 1,252.23		
1110		03/01/2024	Fall River	No Till Drill	\$ 10,000.00	\$ 10,294.75			10/20/2025	\$ 4,921.01	\$ 147.63	\$ 5,068.64		
<i>Loans Paid Off Early</i>														
<i>Existing Loan Portfolio</i>														
1086		05/10/2021	Butte	No Till Drill	\$ 24,500.00	\$ 26,226.89	\$ 5,245.38	09/01/2025	08/26/2025	\$ 5,092.59	\$ 152.78	\$ 5,245.37		\$ -
1087		05/21/2021	Day	Tractor	\$ 20,000.00	\$ 21,374.36	\$ 4,274.80	09/01/2025	08/25/2025	\$ 4,150.29	\$ 124.51	\$ 4,274.80		\$ -
1089		05/21/2021	Kingsbury	Drill	\$ 7,500.00	\$ 8,009.59	\$ 1,603.16	09/01/2025	09/16/2025	\$ 1,458.24	\$ 43.75	\$ 1,501.99		\$ -
1090		11/10/2021	Grant	Vehicle Purchase	\$ 45,000.00	\$ 49,129.77	\$ 9,825.96	09/01/2025	08/25/2025	\$ 9,261.91	\$ 564.05	\$ 9,825.96		\$ 9,142.18
1091		11/10/2021	Kingsbury	No-Till Drill	\$ 7,500.00	\$ 8,016.92	\$ 1,252.23	07/01/2025	07/14/2025	\$ 1,215.76	\$ 36.47	\$ 1,252.23		\$ -
1092		01/01/2023	Beadle	Vehicle Purchase	\$ 22,909.89	\$ 24,881.33	\$ 5,002.48	11/01/2025	11/07/2025	\$ 4,581.58	\$ 420.90	\$ 5,002.48		\$ 9,873.89
1093		01/01/2023	Codington	Vehicle Purchase Refi	\$ 27,950.00	\$ 30,355.14	\$ 6,103.01	11/01/2025	08/25/2025	\$ 5,589.51	\$ 513.50	\$ 6,103.01		\$ 12,046.11
1094		01/01/2023	Codington	Compressor Cooler	\$ 18,000.00	\$ 19,548.93	\$ 3,930.38	11/01/2025	08/25/2025	\$ 3,599.68	\$ 330.70	\$ 3,930.38		\$ 7,757.79
1095		01/01/2023	Brule-Bufferalo	Spray Drone	\$ 45,000.00	\$ 48,872.32	\$ 9,825.96	11/01/2025	09/29/2025	\$ 8,999.21	\$ 826.75	\$ 9,825.96		\$ 19,394.44
1097		01/01/2023	Davison	Vehicle Purchase	\$ 50,000.00	\$ 54,302.57	\$ 10,917.73	11/01/2025	10/16/2025	\$ 9,999.12	\$ 918.61	\$ 10,917.73		\$ 21,549.38
1098		01/01/2023	Gregory	Fabric Machine	\$ 16,500.00	\$ 17,919.86	\$ 3,602.85	11/01/2025	10/17/2025	\$ 3,299.71	\$ 303.14	\$ 3,602.85		\$ 7,111.31
1099		04/01/2023	Minnehaha	Tractor	\$ 55,692.00	\$ 59,627.73	\$ 12,160.60	09/01/2025	09/02/2025	\$ 11,160.94	\$ 999.66	\$ 12,160.60		\$ 23,145.92
1100		04/01/2023	Perkins	No-Till Drill	\$ 59,565.00	\$ 63,774.43	\$ 13,006.29	09/01/2025	08/22/2025	\$ 12,087.11	\$ 919.18	\$ 13,006.29		\$ 19,755.56
1101		03/01/2023	Spink	Tractor	\$ 180,000.00	\$ 192,956.89	\$ 39,303.82	09/01/2025	07/24/2025	\$ 36,066.36	\$ 3,237.46	\$ 39,303.82		\$ 75,045.43
1102		03/01/2023	Turner	No-Till Drill	\$ 30,000.00	\$ 32,243.89	\$ 6,550.64	09/01/2025	09/09/2025	\$ 6,011.06	\$ 539.58	\$ 6,550.64		\$ 12,591.97
1103		07/13/2023	Lincoln	Vehicle Purchase	\$ 14,508.00	\$ 15,614.93	\$ 3,167.89	04/01/2026				\$ -		\$ 9,279.14
1105		07/13/2023	Day	Vehicle Purchase	\$ 44,500.00	\$ 47,895.22	\$ 9,716.78	04/01/2026				\$ -		\$ 28,461.66

Accumulated Interest Since 1965	\$ 225,828.66
Accumulated Interest from HB1210 (2022)	\$ 169,335.70

Accumulated Loans Since 1965	\$ 4,020,359.43
------------------------------	-----------------

RCF LOAN NUMBER	AG DEV LOAN NUMBER	DATE OF LOAN	CONSERVATION DISTRICT	PURPOSE OF LOAN	AMOUNT OF ORIGINAL LOAN	Amount of loan with Interest	PAYMENT DUE THIS FISCAL YEAR	MONTH DUE	MONTH PAID	PRINCIPAL PAID	INTEREST PAID	Total Paid	EXTRA PAID	TOTAL CURRENTLY OUTSTANDING
1106		07/13/2023	Dewey	Skid steer, attachments, repair	\$ 100,000.00	\$ 107,629.71	\$ 21,835.46	04/01/2026				\$ -		\$ 63,958.79
1107		03/01/2024	Hughes	Mulch Machine	\$ 17,000.00	\$ 18,271.53	\$ 3,712.03	10/01/2025	10/20/2025	\$ 3,305.79	\$ 406.25	\$ 3,712.04		\$ 10,847.46
1108		03/01/2024	Codington	Mower	\$ 24,494.00	\$ 26,326.07	\$ 5,348.38	10/01/2025	08/25/2025	\$ 4,763.05	\$ 585.33	\$ 5,348.38		\$ 15,629.31
1109		03/01/2024	Moody	Mulch Machine	\$ 17,200.00	\$ 18,486.51	\$ 3,755.70	10/01/2025	10/27/2025	\$ 3,344.67	\$ 411.03	\$ 3,755.70		\$ 10,975.11
1110		03/01/2024	Fall River	No-Till Drill	\$ 10,000.00	\$ 10,294.75	\$ 5,226.11	10/01/2025	10/20/2025	\$ 4,921.01	\$ 147.63	\$ 5,068.64		\$ -
1111		03/01/2024	Charles Mix	Skid Steer Refi	\$ 150,000.00	\$ 161,219.47	\$ 32,753.19	10/01/2025	10/27/2025	\$ 29,168.66	\$ 3,584.53	\$ 32,753.19		\$ 95,713.09
1112		03/01/2024	Charles Mix	Vehicle Purchase Refi	\$ 33,000.00	\$ 35,468.28	\$ 7,205.70	10/01/2025	10/27/2025	\$ 6,417.10	\$ 788.60	\$ 7,205.70		\$ 21,056.88
1113		05/01/2024	Deuel	Drill Repairs	\$ 20,000.00	\$ 21,721.02	\$ 4,367.09	04/01/2026				\$ -		\$ 17,353.93
1114		07/17/2024	Hand	2024 Ford F350	\$ 65,000.00	\$ 70,038.57	\$ 14,193.05	04/01/2026				\$ -		\$ 55,845.52
1116		01/15/2025	Spink	John Deere Tractor	\$ 171,000.00	\$ 184,271.36	\$ 37,338.63	10/01/2025	07/24/2025	\$ 34,360.38	\$ 2,978.25	\$ 37,338.63		\$ 146,932.73
1117		01/15/2025	Butte	No Till Drill	\$ 33,000.00	\$ 35,561.13	\$ 7,205.70	10/01/2025	09/15/2025	\$ 6,630.95	\$ 574.75	\$ 7,205.70		\$ 28,355.43
1118		01/15/2025	Grant	Tree Storage Repairs	\$ 16,500.00	\$ 17,780.58	\$ 3,602.85	10/01/2025	09/22/2025	\$ 3,315.48	\$ 287.38	\$ 3,602.86		\$ 14,177.72
1119		01/15/2025	Davison	Vehicle Purchase	\$ 50,000.00	\$ 53,880.51	\$ 10,917.73	10/01/2025	10/16/2025	\$ 10,046.90	\$ 870.83	\$ 10,917.73		\$ 42,962.78
1120		01/15/2025	Jones	Grass Drill	\$ 27,100.00	\$ 29,203.23	\$ 5,917.41	10/01/2025	09/23/2025	\$ 5,445.42	\$ 471.99	\$ 5,917.41		\$ 23,285.82
COLUMN TOTALS					\$ 1,618,418.89	\$ 1,739,935.64	\$ 308,868.99			\$ 234,292.48	\$ 21,037.61	\$ 255,330.09	\$ -	\$ 802,249.35

NEW LOANS THIS FISCAL YEAR		PAYMENTS DUE REMAINDER OF YEAR	\$ 112,488.52
CURRENT CASH BALANCE	\$ 2,644,480.37		
AVAILABLE CASH BALANCE	\$ 2,644,480.37		
PENDING LOANS	\$ 8,400.00		
BALANCE - NEW LOANS AWARDED	\$ 2,636,080.37		

Revolving Loan #
Tillage Program #

APPLICATION FOR REVOLVING LOAN and CONSERVATION TILLAGE LOAN

Legal authority: SDCL 38-8-53, 53.1 and 54; and 38-6-8.1, and the Administrative Rules Chapter 12:03:03, and 12:07:01.

The BUTTE Conservation District, with headquarters at Belle Fourche ☒ South Dakota, does hereby apply for a loan of \$ 8,400 from the (check all that apply)

- ☒ Conservation District Revolving Loan Fund
☐ Conservation Tillage Equipment Program

in the State of South Dakota, in accordance with the above stated legal authorities.

Purpose of loan: PURCHASE OF NEW JD 1590 NO TILL DRILL 10'

Payments to begin on: 09/01/2026 Length of Loan: 5 Years, 5 months

The district understands that the repayment will include principal plus interest at the rate of 3.0% Annual Percentage Rate (APR) for Revolving Loans; and 5.0% Annual Percentage Rate (APR) for Conservation Tillage Equipment Loans, on the unpaid principal balance. There is no penalty for early repayment.

REVOLVING LOAN FUND Proposed Principal Repayment Schedule:		
Date	<u>09/01/2026</u>	Amount \$ <u>1,730</u>
Date	<u>09/01/2027</u>	Amount \$ <u>1,730</u>
Date	<u>09/01/2028</u>	Amount \$ <u>1,730</u>
Date	<u>09/01/2029</u>	Amount \$ <u>1,730</u>
Date	<u>09/01/2030</u>	Amount \$ <u>1,730</u>

CONSERVATION TILLAGE LOAN Proposed Principal Repayment Schedule:		
Date		Amount \$
Date		Amount \$
Date		Amount \$
Date		Amount \$
Date		Amount \$
Date		Amount \$

INFORMATION ON EQUIPMENT TO BE PURCHASED WITH LOAN FUNDS (if applicable)

Make of Machine: JOHN DEERE
Model #: 1590
Anticipated Charge: 250 DEP 50/DAY + 15/ACRE

Total Cost: 60,425
Serial #:
Anticipated use of machine: Acres: 2500/YR

EQUIPMENT INSURANCE:

Insurance Company: SDPAA

Amount of comprehensive coverage: 61,000

NOTE: ARSD 12:03:03:02(9) requires that insurance be carried to cover loss of equipment purchased with loan funds.

PLEASE CHECK THE APPROPRIATE ANSWER:

- YES ☐ NO ☒ Will this loan be used to pay off or refinance another loan?
YES ☒ NO ☐ Is existing equipment being used as a trade-in?
YES ☐ NO ☒ If yes, is there a current loan on that equipment? Where: _____
YES ☐ NO ☒ Are other lending institutions involved in the acquisition of this equipment?
YES ☐ NO ☒ Has the district already purchased the equipment? If yes, When: _____

STATEMENT OF FINANCIAL CONDITION AS OF 12/29/2025 . (Or attach current Balance Sheet)

ASSETS:

LIABILITIES/EQUITY:

Cash (deposits, savings, petty cash) \$
 Accounts Receivable (list below) \$
 Equipment (inventory value) \$
 Land & Buildings \$
 Other Assets \$
 TOTAL \$

Vehicle notes payable \$
 Other Accounts Payable (list on separate page) \$
 Equipment notes payable \$
 Land/Building notes payable \$
 TOTAL LIABILITIES \$
 Retained Earnings (equity) \$
 TOTAL LIABILITIES+ EQUITY \$

ACCOUNTS RECEIVABLE RECORD AS OF 12/29/2025

DEBTOR	AMOUNT OF DEBT	DATE DEBT INCURRED	REASON FOR DEBT NOT PAID
NONE			

PROJECTED FINANCIAL STATEMENT (note unusual income or expenditure changes anticipated during the term of the loan):

NOTE:

- ✓1. Please attach a copy of the meeting minutes at which the loan application was authorized. These minutes **MUST BE SIGNED** by the District Administrative Secretary.
2. The district agrees to maintain financial records as required by the Conservation Commission and will make those records available to the Commission or Department of Agriculture staff for inspection upon request.
3. The district agrees to submit a statement of usage to the Commission at the time of each payment according to Administration of Revolving Fund Rules - chapter 12:03:03:08.
- ✓ 4. The district must attach a W-9 form to this application.

2:52 PM

12/29/25

Accrual Basis

Butte Conservation District
Balance Sheet
 As of December 29, 2025

	Dec 29, 25
ASSETS	
Current Assets	
Checking/Savings	
1000 · CHECKING	82,453.93
Total Checking/Savings	82,453.93
Accounts Receivable	
ACCOUNTS RECEIVABLE (1200-1399)	
1300 · GRASS DRILL RENTAL RECEIVABLE	250.00
ACCOUNTS RECEIVABLE (1200-1399) - Other	-250.73
Total ACCOUNTS RECEIVABLE (1200-1399)	-0.73
Total Accounts Receivable	-0.73
Other Current Assets	
1499 · UNDEPOSITED FUNDS	250.00
Total Other Current Assets	250.00
Total Current Assets	82,703.20
Fixed Assets	
FIXED ASSETS (1600-1799)	
1610 · BUILDING	
1710 · ACCUMULATED DEP. - BUILDINGS	-28,944.75
1610 · BUILDING - Other	175,924.00
Total 1610 · BUILDING	146,979.25
1613 · Building3	132,090.34
1615 · Building 2	134,387.95
1617 · BUILDING RENOVATION 2020	141,080.46
1620 · VEHICLES	
1620-1 · TREE COOLER	
1720 · ACCUMULATED DEP. - VEHICLES	-502.65
1730 · Tree Cooler Accum. Deprec.	-4,523.85
1620-1 · TREE COOLER - Other	5,026.50
Total 1620-1 · TREE COOLER	0.00
Total 1620 · VEHICLES	0.00
1650 · MACHINERY	
1620-2 · FLAT BED TRAILER	
1720-2D · Flat Bed Trailer Accum. Deprec.	-3,500.00
1620-2 · FLAT BED TRAILER - Other	3,500.00
Total 1620-2 · FLAT BED TRAILER	0.00
1620-3 · JOHN DEERE TRACTOR	
1720-3D · JD Tractor Accum. Deprec.	-30,000.00
1620-3 · JOHN DEERE TRACTOR - Other	30,000.00
Total 1620-3 · JOHN DEERE TRACTOR	0.00
1650-10 · NO-TILL 1590-2020	56,900.00
1650-11 · NO TILL 1590-2021	24,428.30
1650-12 · NO TILL 1590-2025	33,000.00
1650-2 · FABRIC LAYER	
1750-2D · Fabric Layer Accum. Deprec.	-1,500.00
1650-2 · FABRIC LAYER - Other	1,500.00
Total 1650-2 · FABRIC LAYER	0.00
1650-3 · TREE PLANTER	
1750-3D · Tree Planter Accum. Deprec.	-2,500.00
1650-3 · TREE PLANTER - Other	2,500.00
Total 1650-3 · TREE PLANTER	0.00
Total 1650 · MACHINERY	114,328.30
1690 · OFFICE EQUIPMENT	

2:52 PM
12/29/25
Accrual Basis

Butte Conservation District
Balance Sheet
As of December 29, 2025

	Dec 29, 25
1790 · ACCUM DEPR-OFFICE EQUIPMENT	-1,899.00
1690 · OFFICE EQUIPMENT - Other	1,899.00
Total 1690 · OFFICE EQUIPMENT	0.00
1750 · ACCUM DEPR-MACHINERY	-4,320.60
Total FIXED ASSETS (1600-1799)	664,545.70
Total Fixed Assets	664,545.70
TOTAL ASSETS	747,248.90
LIABILITIES & EQUITY	
Liabilities	
Current Liabilities	
Other Current Liabilities	
CURRENT LIABILITIES (2000-2199)	
2000 · ACCOUNTS PAYABLE	
2000-A · PAYROLL LIABILITIES	316.80
Total 2000 · ACCOUNTS PAYABLE	316.80
2020 · EMPLOYEES MEDICARE PAYABLE	146.14
2021 · FEDERAL WITHHOLDING	695.00
2022 · EMPLOYEES FICA PAYABLE	624.96
2100 · SALES TAX PAYABLE	-3.36
Total CURRENT LIABILITIES (2000-2199)	1,779.54
Total Other Current Liabilities	1,779.54
Total Current Liabilities	1,779.54
Long Term Liabilities	
LONG TERM LIAB (2600-2999)	
2610 · BUILDING NOTES PAYABLE	
2610-C · BUILDING NOTE 2020	-206.29
Total 2610 · BUILDING NOTES PAYABLE	-206.29
2650 · MACHINERY NOTES PAYABLE	
2650-F · MACHINERY NOTE PAYABLE - 2025	26,369.05
Total 2650 · MACHINERY NOTES PAYABLE	26,369.05
Total LONG TERM LIAB (2600-2999)	26,162.76
Total Long Term Liabilities	26,162.76
Total Liabilities	27,942.30
Equity	
FUND EQUITY	
3998 · OPENING EQUITY	180,763.26
Total FUND EQUITY	180,763.26
3900 · Retained Earnings	486,398.70
Net Income	52,144.64
Total Equity	719,306.60
TOTAL LIABILITIES & EQUITY	747,248.90

This application for a loan from the (check all that apply)

- ☒ Conservation District Revolving Loan fund
☐ Conservation Tillage Equipment Loan Program

was approved by the Board of Supervisors of the BUTTE Conservation District at a meeting held on 12/9/2025 and is so recorded in the official minutes of the meeting.

ATTEST:

Walter M. Hartman

SECRETARY

[Signature]

CHAIRMAN

30 Dec 25

Date of Application

=====

LOAN FINDINGS (DEPARTMENT USE ONLY):

QUESTIONS		COMMENTS		
1. Was the application received by the deadline?	Date Received: <u>12-30-25</u>	<u>Yes</u>	No	
2. Is the application signed by appropriate persons?		<u>Yes</u>	No	
3. Is the loan for the appropriate reason (not real estate, computers, etc.)?		<u>Yes</u>	No	
4. If applicable, is insurance being acquired?		<u>Yes</u>	No	NA
5. Are minutes attached with applicable motion(s)?		<u>Yes</u>	No	
6. If no minutes are attached, are they coming? When?		Yes	No	<u>NA</u>
7. Are minutes official (quorum, no advisors involved in action on motions)?		<u>Yes</u>	No	
8. Are conservation tillage loan funds being requested?		Yes	<u>No</u>	
9. Are present loans current?		<u>Yes</u>	No	NA
10. Were past loans paid off on time?		<u>Yes</u>	No	NA
11. Is the financial information in the application consistent with that in the district's annual financial report?		<u>Yes</u>	No	
12. Additional comments				

Walter M. Hartman

Division Staff

1-13-2026

Date

THIS PAGE FOR DEPARTMENT USE ONLY

CERTIFICATION OF COMMISSION ACTION ON LOAN:

Approved Revolving Loan

Approved Conservation Tillage

\$

Disapproved Revolving Loan

\$

Disapproved Conserv. Tillage

Conservation Commission Chairman

Date

CERTIFICATION OF DEPARTMENT ACTION ON CONSERVATION TILLAGE LOAN:

Approved Conservation Tillage

\$

Disapproved Conservation Tillage

Administrator

Date

BUTTE CONSERVATION DISTRICT

DECEMBER 9, 2025 @ 6PM

MINUTES

Call meeting to order: Tim Reich 6:03pm

Present: Tyler Swan, Laura Bosworth, Will Lindsey, Cliff Conry, Tim Reich and Yvette Kirkman

Absent: Paul Winkler and Melanie Williamson

Approval of Agenda: Will moved to approve, Cliff second, all in favor, motion carried

Approval of Minutes: Cliff moved to approve, Will second, all in favor, motion carried

Treasurer's Report: Will moved to approve the report and pay bills as presented, Cliff second, all in favor, motion carried

Old Business

Building – Yvette mentioned a few repairs needed, the south overhead door, changing of locks, general clean up, Will noted he would look at the overhead door and Yvette will get prices for new doorknobs, Cliff moved to approve the repairs as needed, Will second, all in favor, motion carried

New Business

Partner Reports – Laura Bosworth, NRCS State Forester, updated the board on the proposed RCPP application for forestry that would include the Hills Area districts, there is a need for a lead agency, follow up meeting will be on the 17th to determine what each agency will bring to the table and what the target area will be

NRCS Report – Friday is the deadline for pay apps, mods and certifications, staff has been busy in the field certifying practices, Justin Boerboom will be taking a new position on the 15th, a new acting RUC will be selected

Shooting Sports Group – Tim relayed an update from the group

Tree Season – tree orders are coming in slowly, planting packets are ready to go out for signature on contracts and estimates

Drill – Revolving Loan applications are due on January 1st, discussion was held on the latest drill that was paid off, whether to trade for another 15' or order a 10' for ease of transport, safety and repairs, Cliff moved to approve the purchase of a JD 10' 1590 No Till Drill, Will second, all in favor, motion carried, Yvette will get the paperwork started

Grant Review – district was granted an extension on the current open ditch to buried pipe conversion and were awarded a new open ditch to buried pipe grant for 2026

BFRWP – Tim and Justin Krajewski were able to attend the NPS Task Force meeting virtually, the partnership was granted additional funds, final report and documents have been submitted for the RCPP, just waiting on the release of funds for Segment 11, next meeting January 13, 2026 @ 1pm, First Interstate Bank, Belle Fourche

Adjourned: 7pm Next Meeting: Jan 13 @ 6pm

Respectively submitted by:
Yvette M Kirkman, District manager



Mellette County Coservation District

Po Box I

White River, SD 57559

Phone: (605) 259-3252ext 3

Email: toddcoco@outlook.com

December 10, 2025

REF: Cost Docket Update Request

Dear Commission Grant Committee,

The Mellette County Conservation District is adjusting its rates for, tree and shrub planting as well as fabric laying to better reflect the current cost of providing these services to the counties of Mellette and Todd.

As the administrator of the 2024 Multi-Practice Grant (# 2024-CSW-013) we are respectfully requesting permission to use the most up to date docket for the remainder of this grant's period which ends in June 2026. The original grant was written under the 2023 docket, which no longer aligns with our updated rates. This change will allow for better cost recovery and for a more effective utilization of grant funds.

Thank you for your consideration of this request.

Sincerely,

A handwritten signature in black ink, appearing to read "Clinton Rasmusson". The signature is fluid and cursive, with a long horizontal stroke at the end.

Clinton Rasmusson, President

Mellette County Conservation District

Turner Conservation District
655 East Fourth Street
Parker, South Dakota 57053-0416
Phone: (605)-297-5564, Ext. #3. Cell (605)366-7637
e-mail: charlie.groen@sd.nacdnet.net

Conservation Commission:

The Turner Conservation District is requesting a six month extension for Grant Number 2023-CSW-036. Two sites have been reviewed and approved for the 2026 tree planting season by the Urban and Community forest Lead, John Hartland.

Turner Conservation
District Manager
Charles Groen

From: [Smith, Bill](#)
To: [Roeber, Alex](#); [Turgeon, Jordan](#)
Subject: FW: [EXT] extension
Date: Wednesday, January 21, 2026 8:28:33 AM

From: Smith, Bill
Sent: Wednesday, January 14, 2026 1:09 PM
To: 'Stanley County Conservation District' <stanleycountycd@gmail.com>
Subject: RE: [EXT] extension

Mary Beth,

We just need a simple letter stating which grant, how long of an extension, and some reasons why the grant needs to be extended.

Most letters that we receive are pretty simple. Most of these are only 3-4 sentence long.

Thanks,

Bill

From: Stanley County Conservation District <stanleycountycd@gmail.com>
Sent: Tuesday, January 13, 2026 6:18 PM
To: Smith, Bill <Bill.Smith@state.sd.us>
Subject: Re: [EXT] extension

Is there a form for the extension?
On your website or just a letter ?

MaryBeth Fravel
Office Manager

On Jan 12, 2026, at 09:12, Smith, Bill <Bill.Smith@state.sd.us> wrote:

Mary Beth,

You will need a to submit a formal request to the commission to extend the grant. Since the grant does not expire until the end of June 2026, you could do so by January 20 for the January 29 conservation commission meeting or in March for the April commission meeting.

There are a couple of other options as well. One option would be to submit a request for an extension for consideration at the April meeting and apply for a new grant for the April grant round. You could say (in the extension request) that the extension would be withdrawn if the new grant was funded.

Historically, the commission would prefer a new grant versus extending a grant without activity.

Please let me know if you have any questions.

Thanks,

Bill

From: Stanley County Conservation District <stanleycountycd@gmail.com>

Sent: Saturday, January 10, 2026 12:15 PM

To: Smith, Bill <Bill.Smith@state.sd.us>

Subject: [EXT] extension

Can we get an extension on the conservation grant?
we didn't have any applications this year
thank you

--

Mary Beth Fravel
Stanley County Conservation District
605-220-1840

DATE	GRANT FUND DEPOSITS	SB170 (2022) DEPOSITS	PESTICIDE DEPOSITS	OTHER DEPOSITS	INTEREST	GRANTS AWARDED	SB 170 GRANTS AWARDED	DIVISION FUNDING	REVERTED FUNDS	DEOBLIGATED FUNDS	OTHER DEDUCTIONS	ACCOUNT BALANCE	
FY 2026												\$ -	SB170 Balance
												\$ 277,423.16	Commission Balance
	\$ 500,000.00								\$ -			\$ 777,423.16	
									\$ 6,544.12			\$ 777,423.16	Davison 2025-CSW-014
									\$ 10,444.00			\$ 783,967.28	Kingsbury 2023-CSW-017
									\$ -			\$ 794,411.28	Bennett 2025-CSW-003
									\$ 8.47			\$ 794,411.28	Butte 2025-CSW-006
									\$ 41,778.25			\$ 794,419.75	Marshall 2022-CSW-009
									\$ 10,000.00			\$ 836,198.00	Custer 2023-CSW-008
									\$ 9,388.71			\$ 846,198.00	Minnehaha 2023-CSW-022
									\$ 28,902.19			\$ 855,586.71	Minnehaha 2023-CSW-021
									\$ -			\$ 884,488.90	Jerauld 2024-CSW-010
									\$ -			\$ 884,488.90	Davison 2025-CSW-013
									\$ 254.19			\$ 884,488.90	Charles Mix 2024-CSW-003
									\$ -			\$ 884,743.09	Davison 2024-CSW-023
									\$ 433.65			\$ 884,743.09	Miner 2023-CSW-031
									\$ 1,852.88			\$ 885,176.74	Hamlin 2024-CSW-026
									\$ 146.77			\$ 885,176.74	Charles Mix 2025-CSW-007
									\$ 23,442.40			\$ 887,029.62	Beadle 2025-CSW-002
						\$ 616,986.60						\$ 887,176.39	Corson 2025-CSW-011
												\$ 910,618.79	Hughes 2023-CSW-013
												\$ 293,632.19	
SUBTOTAL	\$ 500,000.00	\$ 0.00	\$ 0.00	\$ 0.00	\$ 0.00	\$ 616,986.60	\$ 0.00	\$ 0.00	\$ 133,195.63	\$ 0.00	\$ 0.00	293,632.19	
CUMMULATIVE TOTALS	\$ 20,215,428.83	\$ 100,000.00	\$ 1,011,263.98	\$ 803,406.27	\$ 1,969,945.90	\$ 616,986.60	\$ 0.00	\$ 0.00	\$ 133,195.63	\$ 0.00	\$ 0.00		

Total revenues FY2025 \$ 500,000.00
Total revenues to date \$ 24,100,044.98

Commission Reversions	\$4,269.99
SB170 Reversions	
Total Funds Available:	\$297,902.18

Tentative Fall FY2026 reversions				
District	Grant #	Amount	Grant End date	Fund Type
Lawrence	2024-CSW-012	\$ 120.00	12/31/2025	Commission
Lawrence	2023-CSW-018	\$ 1,654.76	12/31/2025	Commission
Davison	2024-CSW-022	\$ -	12/31/2025	Commission
Perkins	2024-CSW-019	\$ 498.61	12/31/2025	Commission
Dewey	2025-CSW-015	\$ 1,749.62	12/31/2025	Commission
Beadle	2025-CSW-001	\$ -	12/31/2025	Commission
Brule-Buffalo	2024-CSW-021	\$ 247.00	12/31/2025	Commission
Total		\$4,269.99		

Applicant	District	A B C D E F G H I								
		Grass Waterways	Terraces	Crop Rotations	Residue	No Till	Grassland Management	Livestock Management	Forest Management	Cover Crops
Chris Heim	Beadle			X	X	X	X	X		
Jerry Knipling	Brule/Buffalo	X		X	X	X	X	X		
Charles Totten	Brule/Buffalo	X		X	X	X	X	X		
Brock, Brady, & Derek Edgar	Faulk			X	X	X	X	X		X
Vic Holsing Farms Inc	Faulk				X	X	X	X		
Tony & Kim Folk	Grant			X	X		X			X
Burton & Tyler Tesch	Hamlin	X	X	X	X	X	X	X		
Brandon Kinsley	Jones			X	X		X			
Christopher Nix	Jones			X	X		X			
Loryn Gehm	Kingsbury			X	X	X	X	X		X
Richard Abrahamson	Kingsbury			X	X	X		X		
Emil Larsen	Kingsbury								X	
Rasmussen-Lehman 33 Ranch	Mellette						X	X	X	
Hand Brothers	Stanley			X	X	X	X	X		
Prince & Sons	Stanley	X		X	X	X	X			
Richard & Lynn Siedschlaw	Stanley	X		X	X	X	X	X		

A - Grassed waterways are installed and maintained properly

B - Terraces are installed and maintained properly

C - Proper crop rotations are utilized

D - Sufficient crop residues are left to enhance soil stability

E - No-till is utilized in crop production

F - Grasslands are managed for sustainable productivity

G - Livestock are managed to limit soil and nutrient runoff

H - Forest lands are managed according to a forest stewardship plan

I - Cover crops and other soil health practices are implemented

APPENDIX A

SOUTH DAKOTA SOIL CONSERVATION AWARD

NOMINATION FORM

AWARD WINNING SOIL CONSERVATION FARM/RANCH

Name of Nominee: Chris Heim

Mailing Address: 37951 218th St

City, State, Zip: Wessington Springs, SD 57382

Conservation District: Beadle

Nomination submitted by: Beadle Conservation District

Mailing Address: 1386 Lincoln Ave SW

City, State, Zip: Huron, SD 57350

Telephone: (605) 352-2998 ext 3

(Nominator's information intended only for use by the selection committee in case further clarification is needed pertaining to the nomination.)

Which of the following criteria/practices are used by the nominee? (Check all that apply)

☐ Grassed waterways are installed and maintained properly

☐ Terraces are installed and maintained properly

☒ Proper crop rotations are utilized.

☒ Sufficient crop residues are left to enhance soil stability

☒ No till is utilized in crop production

☒ Grasslands are managed for sustainable productivity

☒ Livestock are managed to limit soil and nutrient runoff (feedlot and riparian buffers)

☐ Forest lands are managed according to a forest stewardship plan

Based on the above checked items, explain why you feel this nominee is deserving of the award. Use no more than one additional sheet if necessary. Please submit two to eight photographs no larger than 5 X 7, with a brief caption (50 words or less) for each. Digital photos are acceptable.



1386 Lincoln Ave SW, Suite B · Huron, SD 57350-3080 · Phone (605) 352-2998, Ext.3
Email: beadlecd@sdconservation.net · website: www.beadleconservationdistrict.com

Dear Conservation Commission,

I would like to submit Chris Heim for the 2025 Conservation Award.

Over the years, Chris has been an active participant in USDA conservation programs. He has incorporated the use of multi-species cover crops into his crop rotation and no-till practices to aid in improving soil health on his land. Livestock is benefitting through proper forage management, better water access and more rotational grazing. Wildlife has also benefitted through improved forage management and cover being provided in shelterbelts. Environmental risks have improved through nutrient management, prescribed grazing, and pest management. The improvements include ground and surface water quality, chemical runoff reductions, and reduced wind and water erosion. Overall, Chris is an excellent steward of the land.

Thank you for your consideration,

Robin Viestenz
District Manager
Beadle Conservation District

"Protecting our Natural Resources"

APPENDIX A

SOUTH DAKOTA NATURAL RESOURCES CONSERVATION AWARD

NOMINATION FORM

AWARD WINNING NATURAL RESOURCES CONSERVATION FARM/RANCH

Name of Nominee: Jerry Knippling
Mailing Address: 34957 225th St.
City, State, Zip: Gann Valley, SD
Conservation District: Bule - Burelo

Nomination submitted by: Zach Zimprich BBCTD
Mailing Address: 200 Paul Gust Rd Suite 111
City, State, Zip: Chamberlain, SD 57325
Telephone: 605 254 6099

(Nominator's information intended only for use by the selection committee in case further clarification is needed pertaining to the nomination.)

Which of the following criteria/practices are used by the nominee? (Check all that apply)

- ☒ Grassed waterways are installed and maintained properly
- ☐ Terraces are installed and maintained properly
- ☒ Proper crop rotations are utilized.
- ☒ Sufficient crop residues are left to enhance soil stability
- ☒ No till is utilized in crop production
- ☒ Grasslands are managed for sustainable productivity
- ☒ Livestock are managed to limit soil and nutrient runoff (feedlot and riparian buffers)
- ☐ Forest lands are managed according to a forest stewardship plan

Based on the above checked items, explain why you feel this nominee is deserving of the award. Use no more than one additional sheet if necessary. Please submit two to eight photographs no larger than 5 X 7, with a brief caption (50 words or less) for each. Digital photos are acceptable.

Jerry Knippling of Gann Valley, SD is a prime candidate for the South Dakota Natural Resources Conservation Award. Jerry is still very actively involved in Knippling Hereford, which is also run by his sons Randy and Rob. Jerry has spent his entire life ranching in Buffalo County and the conservation practices he has implemented on the ranch will ensure that his future generations will be able to prosper on the same ground that Jerry's grandfather John purchased in 1909.

Through the years and changes that have taken place, one thing that has never changed is the philosophy of managing the land to promote healthy native grasslands and to make a living doing it. A take half /leave half philosophy has always been maintained on the grasslands but over the years Knippling's have begun using no-till management for the farm ground. On the ranch, miles of cross fencing and water have been added to bring in rotational grazing practice. In recent years high tensile wire with solar electric fence chargers have been used extensively in remote pastures.

The ranch is constantly adding shelterbelts for livestock protection and wildlife use. Some of the shelterbelts have been started using fabric, never disturbing the native grasses between the rows. This provides protection for young trees during the winter and provides a place for bird nesting. The first fabric test plot in this area was done on the ranch.

Jerry has spent a lifetime as a steward of conservation. The success of the Knippling ranch would not be possible without constant innovation and adaptation of sound conservation practices, which Jerry has fully pursued.

Respectfully submitted by

Zach Zimprich

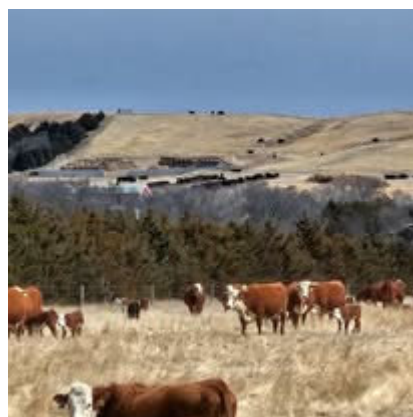
Brule Buffalo Conservation District Manager



A section of high tensile fence on the Knippling Ranch



Aerial view of shelterbelts around the home place



APPENDIX A

SOUTH DAKOTA NATURAL RESOURCES CONSERVATION AWARD

NOMINATION FORM

AWARD WINNING NATURAL RESOURCES CONSERVATION FARM/RANCH

Name of Nominee: Charles Totten
Mailing Address: 34655 240th St.
City, State, Zip: Chamberlain, SD 57325
Conservation District: Brule - Buffalo

Nomination submitted by: Zach Zimpich - BB CID
Mailing Address: 200 Paul Gust Rd Suite 111
City, State, Zip: Chamberlain, SD 57325
Telephone: 605 254 6099

(Nominator's information intended only for use by the selection committee in case further clarification is needed pertaining to the nomination.)

Which of the following criteria/practices are used by the nominee? (Check all that apply)

- ☒ Grassed waterways are installed and maintained properly
- ☐ Terraces are installed and maintained properly
- ☒ Proper crop rotations are utilized.
- ☒ Sufficient crop residues are left to enhance soil stability
- ☒ No till is utilized in crop production
- ☒ Grasslands are managed for sustainable productivity
- ☒ Livestock are managed to limit soil and nutrient runoff (feedlot and riparian buffers)
- ☐ Forest lands are managed according to a forest stewardship plan

Based on the above checked items, explain why you feel this nominee is deserving of the award. Use no more than one additional sheet if necessary. Please submit two to eight photographs no larger than 5 X 7, with a brief caption (50 words or less) for each. Digital photos are acceptable.

Charlie Totten is a very deserving candidate for the Natural Resources Conservation Award. Charlie runs Totten Angus Ranch in Chamberlain, SD. Charlie not only is a great steward of land and the cattle he manages, but he is also tireless in spreading his knowledge and experiences with his peers and the future generation of ranchers in South Dakota. Charlie hosts the SD Grazing School on the Totten Ranch every year. This event brings together people from many different spectrums of the ranching/conservation world to discuss and demonstrate how the practices that Charlie is implementing on his ranch can benefit other producers. Charlie has implemented high intensity grazing in his operation for both profitability and conservation. Charlie has also been very involved in the South Dakota Grassland Coalition, and he was a presenter during a break-out session at the 2025 annual meeting in December.

Charlie has also been a leader in the fight against the “green glacier” that is threatening our native grasslands. The spread of eastern red cedar trees has effected the Totten Ranch, along with countless others in the area. Charlie has been very active in the newly formed River Breaks Prescribed Burn Association. This group aims to reclaim overtaken range land with the use of fire and Charlie is always eager to help with a burn if his schedule and weather allow. Charlie has also hired the Brule-Buffalo Conservation District to mechanically remove cedars on the ranch, and to prepare fire breaks for future burns.

I feel that Charlie Totten would be an exceptional choice for the SD Natural Resources Conservation Award. Charlie is a tremendous steward of the land and is generous in sharing his successes and failures with fellow livestock producers as well as the future generation of producers.

Respectfully submitted by

Zach Zimprich

Brule Buffalo Conservation District Manager



Charlie Totton explaining his mob grazing system at a tour last July to SDSU and UNL researchers working on a joint South Dakota-Nebraska mob grazing project on 13 producer sites.



Charlie speaking to a break-out session at the 2025 SD Grassland Coalition annual conference

SOUTH DAKOTA NATURAL RESOURCE CONSERVATION AWARD

NOMINATION FORM

AWARD WINNING NATURAL RESOURCE CONSERVATION FARM/RANCH

Name of Nominee: 5E (Brock, Brady, and Derek Edgar)

Mailing Address: 17340 368th Ave

City, State, Zip: Rockham SD 57470

Conservation District: Faulk County

Nomination submitted by: Faulk County Conservation District

Mailing Address: 110 8th Ave N

City, State, Zip Faulkton SD 57438

Telephone: (605) 598-6237

(Nominator's information intended only for use by the selection committee in case further clarification is needed pertaining to the nomination.)

Which of the following criteria/practices are used by the nominee? (Check all that apply)

- ☐ Grassed waterways are installed and maintained properly
- ☐ Terraces are installed and maintained properly
- ☒ Proper crop rotations are utilized.
- ☒ Sufficient crop residues are left to enhance soil stability
- ☒ No till is utilized in crop production
- ☒ Grasslands are managed for sustainable productivity
- ☒ Livestock are managed to limit soil and nutrient runoff
- ☐ Forest lands are managed according to a forest stewardship plan
- ☒ Cover crops and other soil health practices are implemented

Based on the above checked items, explain why you feel this nominee is deserving of the award. Use no more than one additional sheet if necessary. Please submit two to eight photographs no larger than 5 X 7, with a brief caption (50 words or less) for each. Digital photos are acceptable.

The Faulk County Conservation District, along with our partners at NRCS would like to nominate 5E (Brock, Brady, and Derek Edgar) for the South Dakota Natural Resource Conservation Award. We feel 5E is a deserving candidate based on the many conservation-based farming practices they utilize in their farming operation. 5E utilizes a diverse crop rotation based on soil productivity. They utilize cover crops to help enhance soils as well as provide alternative grazing to allow cattle back on crop land. 5E utilizes a mob style grazing technique that allows them to help control invasive species as well as provide range land with proper resting periods. 5E has been upgrading watering facilities in range land to allow better quality water for cattle as well as allow to exclude cattle from wetlands. 5E also utilizes food plots and cover crop residue to help enhance wildlife living on their acres.



Fenced off wetland from 5E



Cover crop from 5E



Remaining stubble from grazing

SOUTH DAKOTA NATURAL RESOURCE CONSERVATION AWARD

NOMINATION FORM

AWARD WINNING NATURAL RESOURCE CONSERVATION FARM/RANCH

Name of Nominee: _Vic Holsing Farms INC. (Kurt Holt)_____

Mailing Address: 35332 153rd St_____

City, State, Zip: Wecota SD, 57438_____

Conservation District: Faulk County_____

Nomination submitted by: Faulk County Conservation District_____

Mailing Address: 110 8th Ave N_____

City, State, Zip Faulkton SD, 57438_____

Telephone: (605) 598-6237_____

(Nominator's information intended only for use by the selection committee in case further clarification is needed pertaining to the nomination.)

Which of the following criteria/practices are used by the nominee? (Check all that apply)

- ☐ Grassed waterways are installed and maintained properly
- ☐ Terraces are installed and maintained properly
- ☐ Proper crop rotations are utilized.
- ☒ Sufficient crop residues are left to enhance soil stability
- ☒ No till is utilized in crop production
- ☒ Grasslands are managed for sustainable productivity
- ☒ Livestock are managed to limit soil and nutrient runoff
- ☐ Forest lands are managed according to a forest stewardship plan
- ☐ Cover crops and other soil health practices are implemented

Based on the above checked items, explain why you feel this nominee is deserving of the award. Use no more than one additional sheet if necessary. Please submit two to eight photographs no larger than 5 X 7, with a brief caption (50 words or less) for each. Digital photos are acceptable.

The Faulk County Conservation District, along with our partners at the NRCS would like to nominate Vic Holsing Farms INC (Kurt Holt and family) for the South Dakota Natural Resource Conservation Award. We feel Vic Holsing Farms INC are deserving of this award based on the conservation practices they implement on their operation. The Vic Holsing Farms INC implement a diverse rotational grazing system for both their own cattle as well as custom grazing cattle for others. Vic Holsing farms also utilize conservation practices on grazing lands, hay lands, and crop lands such as rotational grazing, yearlong food plots, and managed haying to boost wildlife benefits on their operation.



Custom Grazing



Lead plant to indicate good grazing practice



Cover Crop



Food Plot

SOUTH DAKOTA NATURAL RESOURCE CONSERVATION AWARD

NOMINATION FORM

AWARD WINNING NATURAL RESOURCE CONSERVATION FARM/RANCH

Name of Nominee: Tony and Kim Folk

Mailing Address: 47762 140th ST

City, State, Zip: Corona, SD 57227

Conservation District: Grant Conservation District

Nomination submitted by: Grant Conservation District and Grant County NRCS Staff

Mailing Address: 1102 South Dakota Street

City, State, Zip Milbank, SD 57252

Telephone: (605) 432-6570 Ext. 3

(Nominator's information intended only for use by the selection committee in case further clarification is needed pertaining to the nomination.)

Which of the following criteria/practices are used by the nominee? (Check all that apply)

- ☐ Grassed waterways are installed and maintained properly
- ☐ Terraces are installed and maintained properly
- ☒ Proper crop rotations are utilized.
- ☒ Sufficient crop residues are left to enhance soil stability
- ☐ No till is utilized in crop production
- ☒ Grasslands are managed for sustainable productivity
- ☐ Livestock are managed to limit soil and nutrient runoff
- ☐ Forest lands are managed according to a forest stewardship plan
- ☒ Cover crops and other soil health practices are implemented

Based on the above checked items, explain why you feel this nominee is deserving of the award. Use no more than one additional sheet if necessary. Please submit two to eight photographs no larger than 5 X 7, with a brief caption (50 words or less) for each. Digital photos are acceptable.

Conservation Farmer Award – Tony and Kim Folk

Two miles north of the Grant-Roberts County line sits the farm of Tony and Kim Folk, just three miles north of where his dad grew up and his family farmed. Both Tony and Kim's families have lived in the area for many generations. Tony's family has been in the Grant County area since the 1890s. His great grandfather lived in a cave dug into the bank of the Whetstone river and built a house a mile west of it a year later. Tony's son Tanner, who now farms with them, lives on the farmstead settled by the Martens, Tony's maternal ancestors. Tanner is the seventh generation living on the farmstead. Tony grew up raising a dairy herd and farming various crops. Tony got his first taste of farming in the mid-1970s at the age of 10, when a calf of theirs was born out in the snow. His dad said if it lived, Tony could buy it. After that Tony slowly built his own herd. As a sophomore in high school, he got the chance to rent 34.5 acres from his maternal grandfather. His first crop was oats, yielding about a 100 bushel/acre. The price he received was \$4 per bushel, which he was pleased with. The field is still in his family today; however, Tony put the acreage into CRP 20 years ago. His family enjoys going out there to hunt and watch the wildlife that call it home. Tony farmed with his dad until his dad's passing in the late 90s. Tony continued with the dairy herd for another four years when he made the decision to sell the herd to concentrate on the crop side of farming and his young family.

Tony's operation is a corn, soybean, small grain rotation with cover crops. When Tony looks at his operation, he realizes that conservation plays an important part. He has put crop acres that he realizes shouldn't be farmed into the CRP. Tony started working with the NRCS in 2008 by improving his irrigation and switching over to low pressure nozzles. In 2024, on the same irrigation pivot, he made another improvement by installing a variable rate system to improve the distribution of water on the field. In 2010, Tony worked with NRCS to get a Conservation Stewardship Program contract. With this program, he looked at helping wildlife by planting grass on his cropland acreage. Since then, Tony has continued to research and implement ways to support the surrounding wildlife. He has added 11 acres of pollinator plants, filter strips and field borders to improve the conditions for the wildlife and pollinators. Tony realizes the importance of water, leading to the improvement of his nutrient and pest management. He has gone to precision nutrient management on 900 acres. He has his fields sprayed using up to date gps, shut-off nozzles and reduced flow. By doing this he has lowered inputs, helping his bottom line. On other grounds, he has discovered that by splitting his nitrogen, the crop can better utilize it. After wheat harvest, Tony plants a cover crop on around 400-500 acres. His main concern is to improve the organic matter, and he has discovered his compaction issues have also been reduced.

Tony admits that without the CSP, EQIP, and CRP programs he and Kim likely wouldn't have tried these practices. As Tony and Kim look to the future, they know that they will continue to use the practices. They also acknowledge that conservation practice will continue to enable the USA to have the best and safest food supply in the world.

Conservation Farmer Award – Tony and Kim Folk



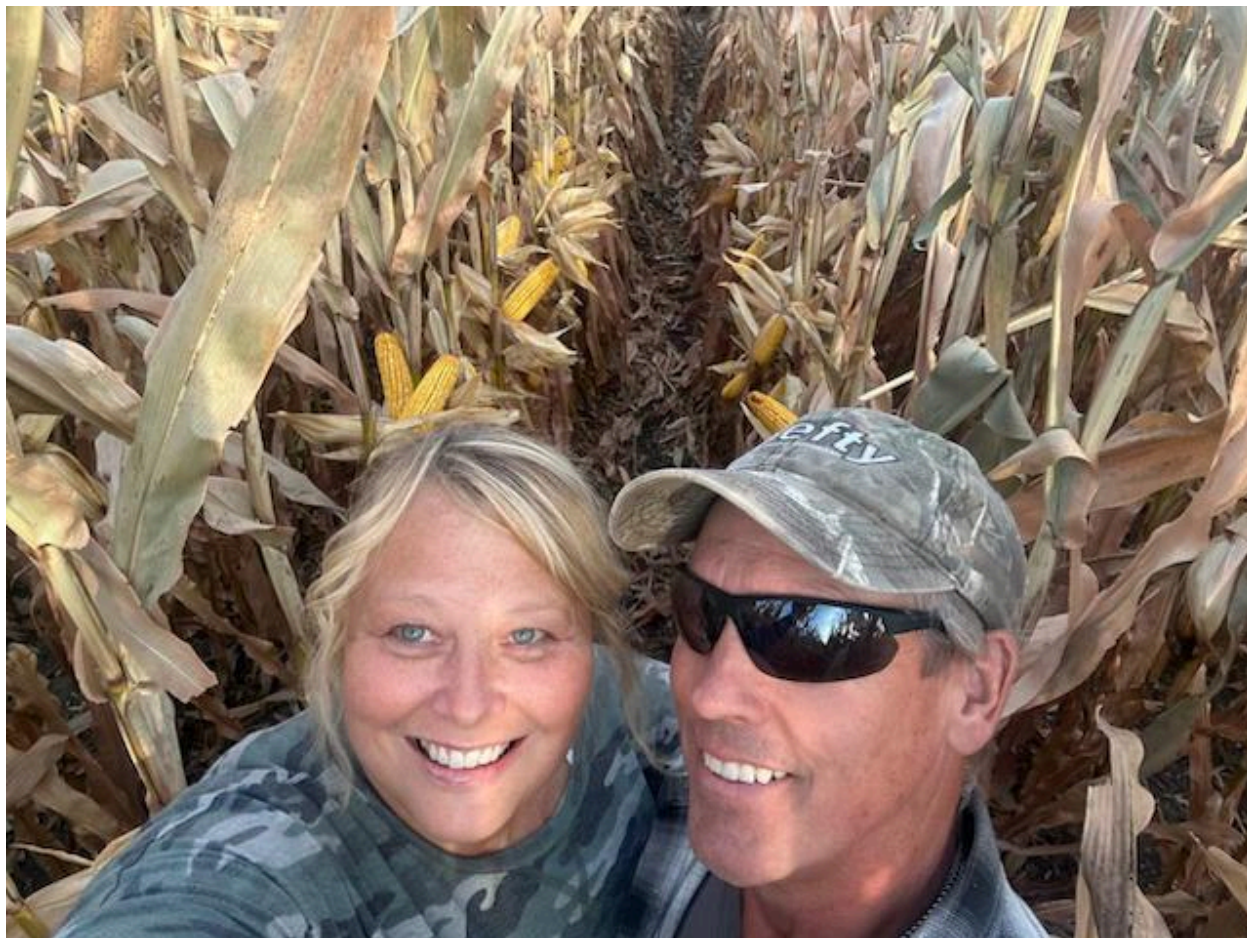
Family is important to Tony and Kim. It was one of the reasons when he decided to get out of Dairy. He also has family in mind when he thinks about the future of their farming operation.

Conservation Farmer Award – Tony and Kim Folk



Harvesting corn on the Tony and Kim Folk Farm

Conservation Farmer Award – Tony and Kim Folk



Tony and Kim Folk

Grant County Conservation Farmer Award Nominees

APPENDIX A

SOUTH DAKOTA NATURAL RESOURCES CONSERVATION AWARD

NOMINATION FORM

AWARD WINNING NATURAL RESOURCES CONSERVATION FARM/RANCH

Name of Nominee: Burton and Tyler Tesch

Mailing Address: 18020 450TH AVE

City, State, Zip: HAYTI, SD 57241

Conservation District: Hamlin County Conservation District

Nomination submitted by: Hamlin County Conservation District

Mailing Address: PO Box 165 / 301 Marsh Street

City, State, Zip: Hayti, SD, 57241

Telephone: 605-783-3642 x 3

(Nominator's information intended only for use by the selection committee in case further clarification is needed pertaining to the nomination.)

Which of the following criteria/practices are used by the nominee? (Check all that apply)

- ☒ Grassed waterways are installed and maintained properly
- ☒ Terraces are installed and maintained properly
- ☒ Proper crop rotations are utilized.
- ☒ Sufficient crop residues are left to enhance soil stability
- ☒ No till is utilized in crop production
- ☒ Grasslands are managed for sustainable productivity
- ☒ Livestock are managed to limit soil and nutrient runoff (feedlot and riparian buffers)
- ☐ Forest lands are managed according to a forest stewardship plan

Based on the above checked items, explain why you feel this nominee is deserving of the award. Use no more than one additional sheet if necessary. Please submit two to eight photographs no larger than 5 X 7, with a brief caption (50 words or less) for each. Digital photos are acceptable.

Burton Tesch and his son Tyler are highly deserving of the honor and recognition of the South Dakota Natural Resources Conservation Award. Their row crop and cow-calf operation is folded into a band of ridged, hummocky glacial till in the northern part of Hamlin County, where they live across the road from one another. They operate their crop ground, grasslands and cow herd with a strong sense of not only what is right for their family but also what is right for the land. They are both active participants in NRCS's Conservation Stewardship Program and FSA's Conservation Reserve Program. They are always working to make improvements in soil health, water quality and habitat, while working both for today and tomorrow. Burton served as a HCCD supervisor, chairman and advisor from 1999 to 2024, spreading the good word of soil health throughout Hamlin County.

Burton took over the farm, which was a dairy, in 1972. The farm had terraces, ditches, waterways and livestock dugouts. He made the transition to no-till in the early 1980s, a transition that was assisted by Burton's brother Dale, another well-known conservation-minded farmer in the area. Burton whole-heartedly believes in soil science and celebrated no-till farming on his operation through the ups and downs of the '80s and '90s and integrated his son Tyler into the operation part time in 2008. In 2011, Tyler joined the farm full time. Rather than clear through the land with an excavator and a plow, both Burton and Tyler continued to maintain the integrity of the structural improvements (waterways, terraces and ditches) and management improvements (crop rotation, no-till) that Burton had already integrated. In 2015, they made the decision to change their dairy over to a cow-calf operation.

Over the course of their time working together since 2011, they have continued to improve upon their previous management, going above and beyond for the land. Fragile areas in production were seeded back to grass through CRP. Hill tops made the transition from crop to alfalfa and pasture. Water systems and fence were added to allow for better water quality on-farm and downstream and more efficient utilization of available grass. Trees were planted to reduce erosion and provide habitat to critters of all sizes. Corn and soybeans are rotated with small grains, annual forages and cover crops to increase residue after harvest and allow for integration of cattle to add to soil biota. Tyler is famous in the NRCS office for his "fat cows" and tall grass, a badge of honor signifying success in pasture rotation, deferred grazing and making alternative feed sources work in both wet and dry years.

Burton and Tyler are excellent stewards of the land, showing that dedication and a strong land ethic can sustain a family farm over many years, and hopefully many years to come.



Burton Tesch in 2022 in a formerly cropped field that he turned back to pasture as a part of a CSP contract. He was pleased with the results!



Burton and Tyler understand that a more diverse stand makes for healthier system in the long run. We spotted some blazing star on the hilltops in 2025!

APPENDIX A

SOUTH DAKOTA NATURAL RESOURCES CONSERVATION AWARD

NOMINATION FORM

AWARD WINNING NATURAL RESOURCES CONSERVATION FARM/RANCH

Name of Nominee: Christopher Nix

Mailing Address: PO Box 72

City, State, Zip: Murdo, SD 57559

Conservation District: Jones County Conservation District

Nomination submitted by: Jones County Conservation District

Mailing Address: PO Box 298

City, State, Zip: Murdo, SD 57559

Telephone: 605-530-2020

(Nominator's information intended only for use by the selection committee in case further clarification is needed pertaining to the nomination.)

Which of the following criteria/practices are used by the nominee? (Check all that apply)

- ☐ Grassed waterways are installed and maintained properly
- ☐ Terraces are installed and maintained properly
- ☒ Proper crop rotations are utilized.
- ☒ Sufficient crop residues are left to enhance soil stability
- ☐ No till is utilized in crop production
- ☒ Grasslands are managed for sustainable productivity
- ☒ Livestock are managed to limit soil and nutrient runoff (feedlot and riparian buffers)
- ☐ Forest lands are managed according to a forest stewardship plan

Based on the above checked items, explain why you feel this nominee is deserving of the award. Use no more than one additional sheet if necessary. Please submit two to eight photographs no larger than 5 X 7, with a brief caption (50 words or less) for each. Digital photos are acceptable.

Christopher Nix comes from a long line of farming and ranching, growing up helping his dad and grandpa farm and ranch. When Christopher was in high school, they started converting cropland back to grass to switch to an all cow/calf operation.

Christopher, going out on his own, has a fencing business and has purchased land of his own which was cropland, he has taken steps to convert the land back to native grass.

Christopher also has an eye for longhorn cattle. At a young age he was interested in longhorn cattle. Now having his own herd of longhorn cattle. Christopher shows the longhorns at several shows along with his children. They are a local favorite in the local parade every year where Christopher and his children lead the longhorns in the parade. Christopher, along with the Longhorn association will be hosting a show and sale of longhorns in May 2026 in Murdo.



Christopher Nix converted 160 acres of cropland by first planting a cover crop to rebuild some organic matter and provide supplemental grazing for cattle. After the cover crop was grazed he planted the native grass seeding mixture. A border fence and a cross fence were added with a newly installed water system. Christopher worked with NRCS and the EQIP program to accomplish these projects.



APPENDIX A

SOUTH DAKOTA NATURAL RESOURCES CONSERVATION AWARD

NOMINATION FORM

AWARD WINNING NATURAL RESOURCES CONSERVATION FARM/RANCH

Name of Nominee: Brandon Kinsley

Mailing Address: 26954 242nd Street

City, State, Zip: Murdo, SD 57559

Conservation District: Jones County Conservation District

Nomination submitted by: Jones County Conservation District

Mailing Address: PO Box 298

City, State, Zip: Murdo, SD 57559

Telephone: 605-530-2020

(Nominator's information intended only for use by the selection committee in case further clarification is needed pertaining to the nomination.)

Which of the following criteria/practices are used by the nominee? (Check all that apply)

☐ Grassed waterways are installed and maintained properly

☐ Terraces are installed and maintained properly

☒ Proper crop rotations are utilized.

☒ Sufficient crop residues are left to enhance soil stability

☐ No till is utilized in crop production

☒ Grasslands are managed for sustainable productivity

☐ Livestock are managed to limit soil and nutrient runoff (feedlot and riparian buffers)

☐ Forest lands are managed according to a forest stewardship plan

Based on the above checked items, explain why you feel this nominee is deserving of the award. Use no more than one additional sheet if necessary. Please submit two to eight photographs no larger than 5 X 7, with a brief caption (50 words or less) for each. Digital photos are acceptable.

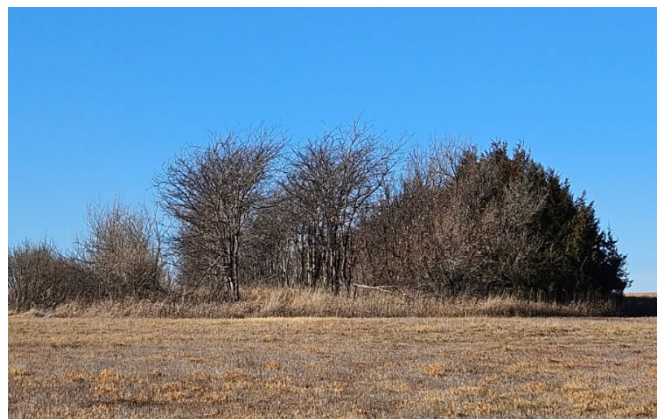
Brandon Kinsley ranches with his dad, Bob Kinsley. Brandon's son Dylan is also an integral part of the operation and serves as their hired man, therefore there are three generations working together. Brandon has purchased land of his own and rents land to aid in the operation.

Brandon works for West River Lyman Jones Rural Water which enhances the understanding for good quality water. Brandon has planted hundreds of trees and laid fabric on trees around his homestead, several rows were handplanted and meticulously cared for to establish a shelterbelt around his home.

Brandon has planted a shelterbelt for cattle under the EQIP program along with installing a pipeline and tank for better grazing management. Utilizing an additional EQIP contract this spring Brandon seeded 110 acres of grass to provide hay for his cattle. Brandon also dormant seeded 100 acres of native grasses this fall. Border fence and one water tank was installed on existing rangeland to complete the project.



Spring grass seeding, Cost-share through the EQIP program, planning with NRCS.
Tank installed with the assistance of the EQIP program, working with NRCS for plan, and designs.
Shelterbelt installed several years ago under the EQIP program working with NRCS for plan and design.



SOUTH DAKOTA NATURAL RESOURCES CONSERVATION AWARD

NOMINATION FORM

AWARD WINNING NATURAL RESOURCES CONSERVATION FARM/RANCH

Name of Nominee: Loryn Gehm
Mailing Address: 43180 210th St DeSmet SD 57231
City, State, Zip: DeSmet SD 57231
Conservation District: Kingsburg

Nomination submitted by: Robert Lee
Mailing Address: 21265 429th Ave
City, State, Zip: DeSmet SD 57231
Telephone: 605 203 0908

(Nominator's information intended only for use by the selection committee in case further clarification is needed pertaining to the nomination.)

Which of the following criteria/practices are used by the nominee? (Check all that apply)

- ☐ Grassed waterways are installed and maintained properly
- ☐ Terraces are installed and maintained properly
- ☒ Proper crop rotations are utilized.
- ☒ Sufficient crop residues are left to enhance soil stability
- ☒ No till is utilized in crop production
- ☒ Grasslands are managed for sustainable productivity
- ☒ Livestock are managed to limit soil and nutrient runoff (feedlot and riparian buffers)
- ☐ Forest lands are managed according to a forest stewardship plan

Based on the above checked items, explain why you feel this nominee is deserving of the award. Use no more than one additional sheet if necessary. Please submit two to eight photographs no larger than 5 X 7, with a brief caption (50 words or less) for each. Digital photos are acceptable.

*Uses Equip to Enhance Soil Quality
has used conservation practices for many years*

SOUTH DAKOTA NATURAL RESOURCES CONSERVATION AWARD
NOMINATION FORM
AWARD WINNING NATURAL RESOURCES CONSERVATION FARM/RANCH

Name of Nominee: Richard Abrahamson
Mailing Address: 21921 436th Ave
City, State, Zip: Oldham, SD 57051
Conservation District: Kingsbury

Nomination submitted by: Robert Lee
Mailing Address: 21265 429th Ave
City, State, Zip: DeSmet SD 57231
Telephone: 605 203 0908

(Nominator's information intended only for use by the selection committee in case further clarification is needed pertaining to the nomination.)

Which of the following criteria/practices are used by the nominee? (Check all that apply)

- ☐ Grassed waterways are installed and maintained properly
- ☐ Terraces are installed and maintained properly
- ☒ Proper crop rotations are utilized.
- ☒ Sufficient crop residues are left to enhance soil stability
- ☐ No till is utilized in crop production
- ☐ Grasslands are managed for sustainable productivity
- ☒ Livestock are managed to limit soil and nutrient runoff (feedlot and riparian buffers)
- ☐ Forest lands are managed according to a forest stewardship plan

Based on the above checked items, explain why you feel this nominee is deserving of the award. Use no more than one additional sheet if necessary. Please submit two to eight photographs no larger than 5 X 7, with a brief caption (50 words or less) for each. Digital photos are acceptable.

Rick has used multiple conservation practices over the years to optimise soil productivity

SOUTH DAKOTA NATURAL RESOURCES CONSERVATION AWARD
NOMINATION FORM
AWARD WINNING NATURAL RESOURCES CONSERVATION FARM/RANCH

Name of Nominee: Emil Larsen
Mailing Address: 20537 431st Ave.
City, State, Zip: De Smet, SD 57231
Conservation District: Kingsbury

Nomination submitted by: Amy Halverson
Mailing Address: 43781 204th St.
City, State, Zip: De Smet, SD 57231
Telephone: (605) 868-2828

(Nominator's information intended only for use by the selection committee in case further clarification is needed pertaining to the nomination.)

Which of the following criteria/practices are used by the nominee? (Check all that apply)

- ☐ Grassed waterways are installed and maintained properly
- ☐ Terraces are installed and maintained properly
- ☐ Proper crop rotations are utilized.
- ☐ Sufficient crop residues are left to enhance soil stability
- ☐ No till is utilized in crop production
- ☐ Grasslands are managed for sustainable productivity
- ☐ Livestock are managed to limit soil and nutrient runoff (feedlot and riparian buffers)
- ☒ Forest lands are managed according to a forest stewardship plan

Based on the above checked items, explain why you feel this nominee is deserving of the award. Use no more than one additional sheet if necessary. Please submit two to eight photographs no larger than 5 X 7, with a brief caption (50 words or less) for each. Digital photos are acceptable.



Mellette County Coservation District

PO Box I White River, SD 57579

Phone: (605) 259-3252ext 3

Email: toddcocd@outlook.com

The Mellette County Conservation District is hornored to nominate the Rasmussen-Lehman 33 Ranch for the Natural Resources Conservation Award.

Rasmussen–Lehman 33 Ranch is a fourth-generation family operation. Dan Rasmussen is the third generation on the land his grandparents homesteaded in 1914. In 1991, Dan and his father, “Skee,” began implementing rotational grazing in their management plan. Today, Patrick Lehman represents the fourth generation actively involved in the operation.

The ranch encompasses approximately 22,000 acres of native grassland managed with a regenerative approach. Pastures are rotationally grazed to ensure adequate plant recovery, to improve soil function. Through these regenerative practices, Rasmussen and Lehman have seen increases in native plant diversity, higher soil organic matter, and improved water infiltration. These outcomes have contributed to more drought-resilient rangeland and allowed the ranch to increase the stocking rate by 30% after the first 10 years of following this plan.

The Rasmussen–Lehman 33 Ranch is addressing the encroachment by Eastern Red Cedar. To address this challenge, they are managing the cedar expansion through mechanical removal and prescribed burning. These efforts are restoring open rangeland, and improving forage availability.

APPENDIX A

SOUTH DAKOTA NATURAL RESOURCES CONSERVATION AWARD

NOMINATION FORM

AWARD WINNING NATURAL RESOURCES CONSERVATION FARM/RANCH

Name of Nominee: Rasmussen-Lehman 33 Ranch

Mailing Address 26151 Cedar Butte Rd

City, State, Zip: Belvidere, SD 57521

Conservation District: Mellette County

Nomination submitted by: Mellette County Conservation District

Mailing Address: PO Box I

City, State, Zip: White River, SD 57579

Telephone: (605) 259-3252 ext. 3

(Nominator's information intended only for use by the selection committee in case further clarification is needed pertaining to the nomination.)

Which of the following criteria/practices are used by the nominee? (Check all that apply)

- ☐ Grassed waterways are installed and maintained properly
- ☐ Terraces are installed and maintained properly
- ☐ Proper crop rotations are utilized.
- ☐ Sufficient crop residues are left to enhance soil stability
- ☐ No till is utilized in crop production
- ☒ Grasslands are managed for sustainable productivity
- ☒ Livestock are managed to limit soil and nutrient runoff (feedlot and riparian buffers)
- ☒ Forest lands are managed according to a forest stewardship plan

Based on the above checked items, explain why you feel this nominee is deserving of the award. Use no more than one additional sheet if necessary. Please submit two to eight photographs no larger than 5 X 7, with a brief caption (50 words or less) for each. Digital photos are acceptable.

Rasmussen-Lehman 33 Ranch



Dan Rasmussen



Blake Lehman



Grandkids enjoying the bountifully Big Bluestem.



Kate Rasmussen helping at the family branding.



Watering system





Stanley County Conservation District

PO Box 393
Fort Pierre, SD 57532

(605) 220-1840
email: Stanleycountycd@gmail.com

Dear South Dakota Conservation Commission;

The Stanley County Conservation Board would like to nominate the Hand Brothers for the natural resource farm/ranch award. David, Terry and Mike Hand under the watchful eye of their mother Laura operate a farm and ranch in Stanley and Haakon Counties. They are good stewards of the land and follow the conservation practices of cover crops, rotational grazing and have planted many acres of shelter belts for livestock and wildlife protection.

Thank you

Stanley County Board members

APPENDIX A

SOUTH DAKOTA NATURAL RESOURCES CONSERVATION AWARD

NOMINATION FORM

AWARD WINNING NATURAL RESOURCES CONSERVATION FARM/RANCH

Name of Nominee: Hand Brothers

Mailing Address: 54769 SD Hwy 34

City, State, Zip: Midland SD 57552

Conservation District: Stanley County

Nomination submitted by: Stanley County Conservation District

Mailing Address: PO Box 393

City, State, Zip: Fort Pierre SD 57532

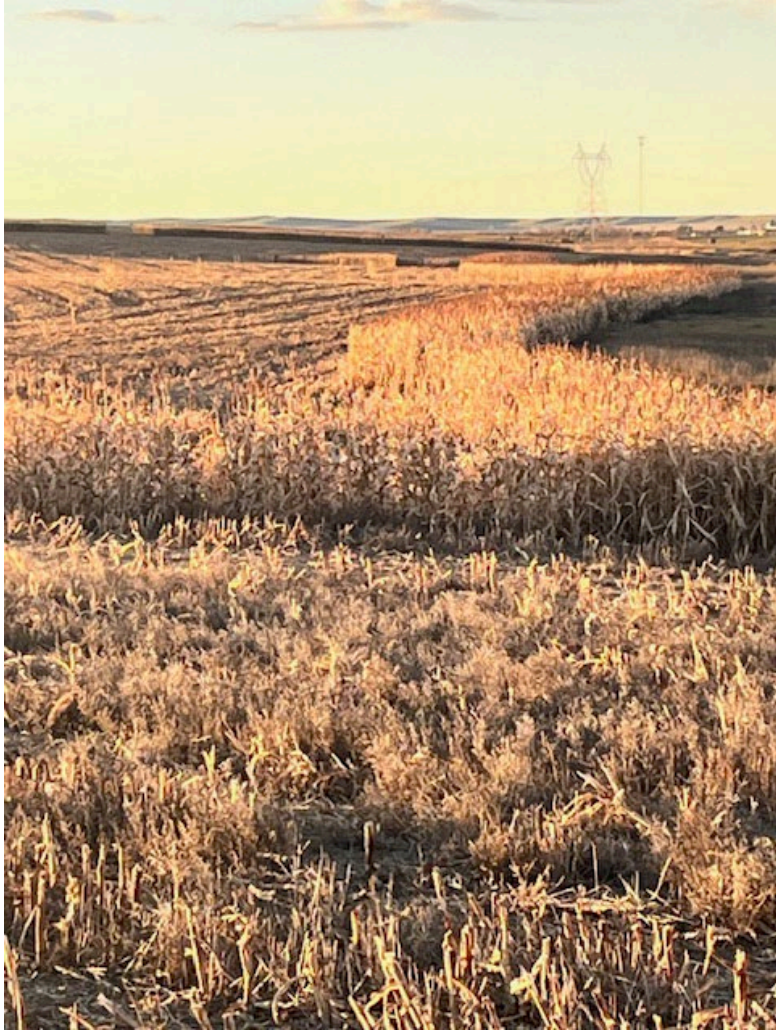
Telephone: 605-220-1840

(Nominator's information intended only for use by the selection committee in case further clarification is needed pertaining to the nomination.)

Which of the following criteria/practices are used by the nominee? (Check all that apply)

- ☐ Grassed waterways are installed and maintained properly
- ☐ Terraces are installed and maintained properly
- ☒ Proper crop rotations are utilized.
- ☒ Sufficient crop residues are left to enhance soil stability
- ☒ No till is utilized in crop production
- ☒ Grasslands are managed for sustainable productivity
- ☒ Livestock are managed to limit soil and nutrient runoff (feedlot and riparian buffers)
- ☐ Forest lands are managed according to a forest stewardship plan

Based on the above checked items, explain why you feel this nominee is deserving of the award. Use no more than one additional sheet if necessary. Please submit two to eight photographs no larger than 5 X 7, with a brief caption (50 words or less) for each. Digital photos are acceptable.











APPENDIX A

SOUTH DAKOTA NATURAL RESOURCES CONSERVATION AWARD

NOMINATION FORM

AWARD WINNING NATURAL RESOURCES CONSERVATION FARM/RANCH

Name of Nominee: Prince and Sons

Mailing Address: 26469 US Hwy 14/34

City, State, Zip: Fort Pierre SD 57532

Conservation District: Stanley County

Nomination submitted by: Stanley County Conservation District

Mailing Address: PO Box 393

City, State, Zip: Fort Pierre SD 57532

Telephone: 605-220-1840

(Nominator's information intended only for use by the selection committee in case further clarification is needed pertaining to the nomination.)

Which of the following criteria/practices are used by the nominee? (Check all that apply)

- ☒ Grassed waterways are installed and maintained properly
- ☐ Terraces are installed and maintained properly
- ☒ Proper crop rotations are utilized.
- ☒ Sufficient crop residues are left to enhance soil stability
- ☒ No till is utilized in crop production
- ☒ Grasslands are managed for sustainable productivity
- ☐ Livestock are managed to limit soil and nutrient runoff (feedlot and riparian buffers)
- ☐ Forest lands are managed according to a forest stewardship plan

Based on the above checked items, explain why you feel this nominee is deserving of the award. Use no more than one additional sheet if necessary. Please submit two to eight photographs no larger than 5 X 7, with a brief caption (50 words or less) for each. Digital photos are acceptable.









Stanley County Conservation District

PO Box 393
Fort Pierre, SD 57532

(605) 220-1840
email: Stanleycountycd@gmail.com

Dear South Dakota Conservation Commission;

The Stanley County Conservation Board would like to nominate Richard and Lynn Siedschlaw for the natural resource farm/ranch award.

They maintain grass waterway in critical areas of their land and use crop rotation to improve soil structure and prevent erosion. They practice no till farming to preserve moisture and enhance organic matter in the soil. Their grasslands are managed with rotational grazing to prevent overgrazing. With the planting of many acres of shelterbelts they are providing cover for the livestock and for the wildlife that is thriving.

Thank you,

Stanley County Conservation Board

APPENDIX A

SOUTH DAKOTA NATURAL RESOURCES CONSERVATION AWARD

NOMINATION FORM

AWARD WINNING NATURAL RESOURCES CONSERVATION FARM/RANCH

Name of Nominee: Richard and Lynn Siedschlaw

Mailing Address: 28119 US Hwy 14/34

City, State, Zip: Fort Pierre SD 57532

Conservation District: Stanley County Conservation

Nomination submitted by: Stanley County Conservation Board

Mailing Address: PO Box 393

City, State, Zip: Fort Pierre SD 57532

Telephone: 605-220-1840

(Nominator's information intended only for use by the selection committee in case further clarification is needed pertaining to the nomination.)

Which of the following criteria/practices are used by the nominee? (Check all that apply)

- ☒ Grassed waterways are installed and maintained properly
- ☐ Terraces are installed and maintained properly
- ☒ Proper crop rotations are utilized.
- ☒ Sufficient crop residues are left to enhance soil stability
- ☒ No till is utilized in crop production
- ☒ Grasslands are managed for sustainable productivity
- ☒ Livestock are managed to limit soil and nutrient runoff (feedlot and riparian buffers)
- ☐ Forest lands are managed according to a forest stewardship plan

Based on the above checked items, explain why you feel this nominee is deserving of the award. Use no more than one additional sheet if necessary. Please submit two to eight photographs no larger than 5 X 7, with a brief caption (50 words or less) for each. Digital photos are acceptable.







