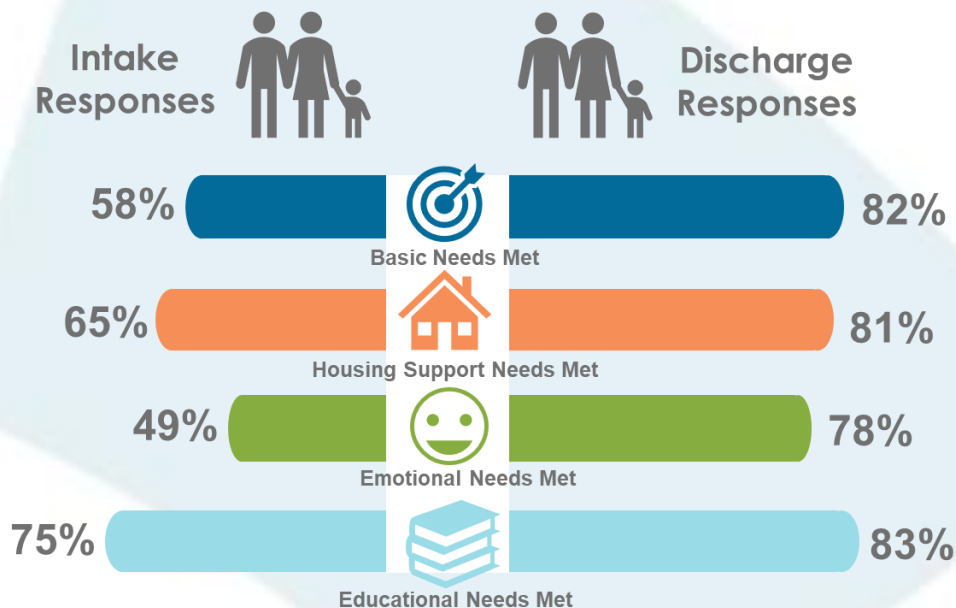


# Systems of Care (SOC) Services

## FY20 Outcomes for Families Served in SOC Services

SOC helps families navigate and access services, with a goal of reducing barriers that would otherwise put the youth at risk of justice system involvement. SOC services are currently available in 26 counties across South Dakota.

In FY20, 455 families were served in SOC services. Those families reported improved outcomes in all areas measured, including basic needs, housing supports, and emotional and educational needs. One hundred and sixty-one of the youth and families served in SOC went on to receive additional behavioral health or other needed services after completing SOC.



Data include clients served through all SOC funding sources, including JJRI, general funds, and Project Aware

# Family Support Program (FSP)

## FY20 Outcomes for Families Served in FSP

FSP provides families and youth with financial and other supports to assist with the unique challenges of youth who are involved or at-risk of involvement with the juvenile justice system. FSP is available to all at-risk youth accessing publicly funded behavioral health services in South Dakota.

In FY20, 387 supports were provided to youth and families enrolled in FSP. Families reported using the program to secure housing, meet their basic needs, and improve attendance and/or relational problems with teachers and peers, among many other positive outcomes.



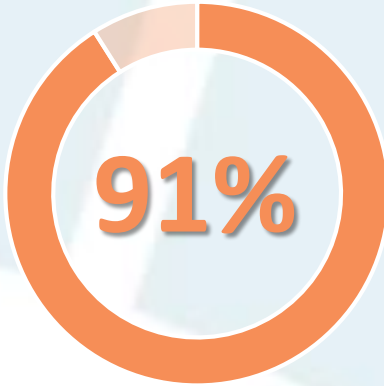
# Child, Youth or Family (CYF) Services

## FY20 Outcomes for Youth and Families Served in CYF Services

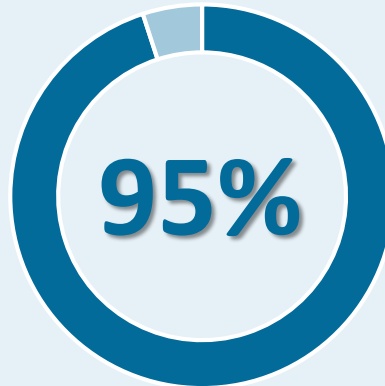
CYF services are specialized outpatient services provided to youth living with serious emotional disturbances. Services are available statewide and may include case management, individual, group and/or family counseling.

In FY20, 7,096 youth received CYF services. Those youth reported high levels of satisfaction with the services they received, ease and convenience when accessing services, and improved mental health and social well-being.

### Satisfaction with Services



### Access to Services



### Mental Health & Social Well-being



The Global Appraisal of Individual Needs Short Screener (GAIN-SS) serves as a periodic measure of behavioral health needs over time. Every youth served in CYF services receives the GAIN-SS screener at admission and every six months throughout their services.

In FY20, youth served in CYF services showed a decrease in internalizing disorders, externalizing disorders, and levels of crime and violence.

## GAIN-SS Scores from Admission to Most Recent Update for Clients Served in CYF

