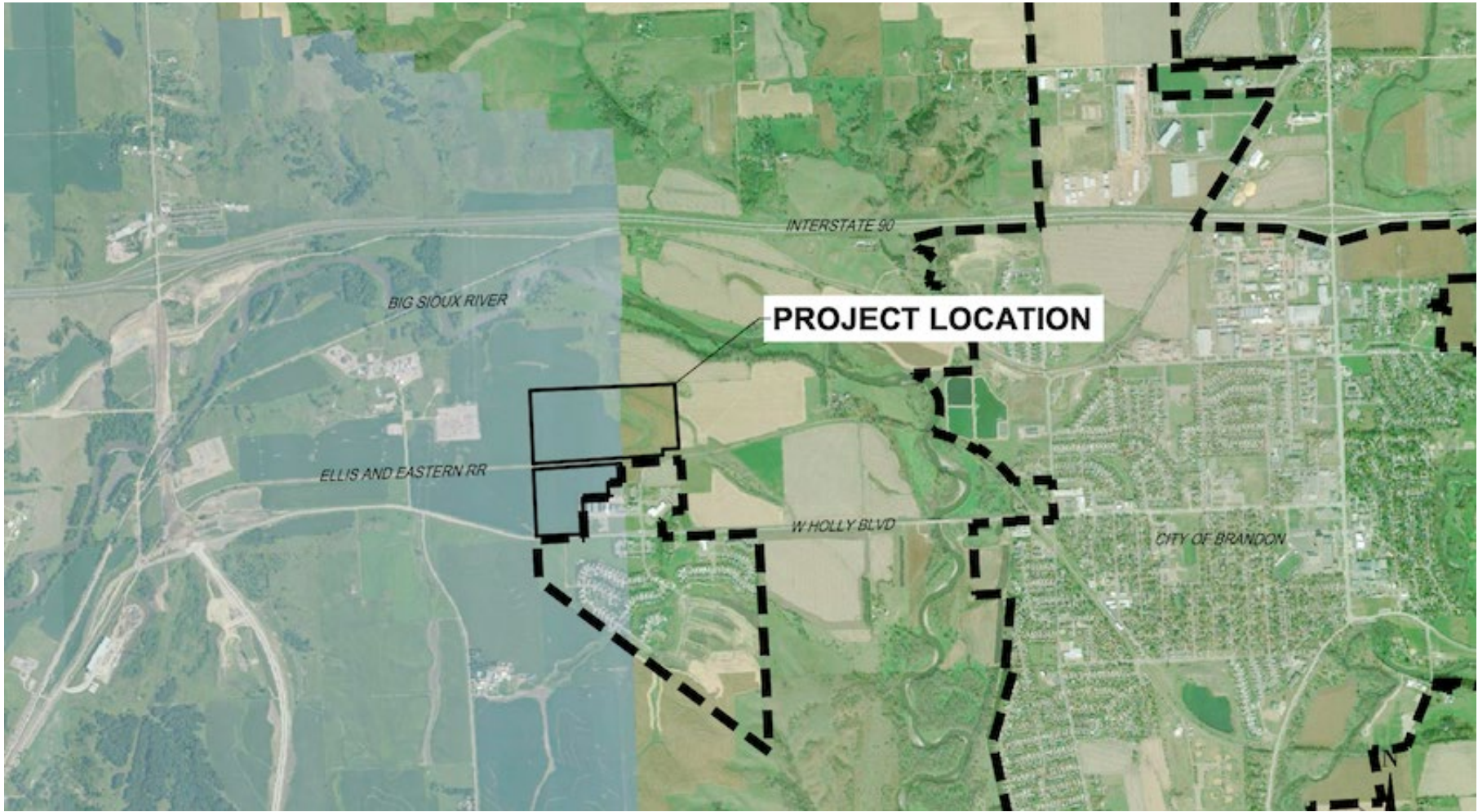


2021 STC Grant

September 29, 2021

SD Rail Board & Rail  
Authority  
Presentation

# ENCORE RAIL PARK



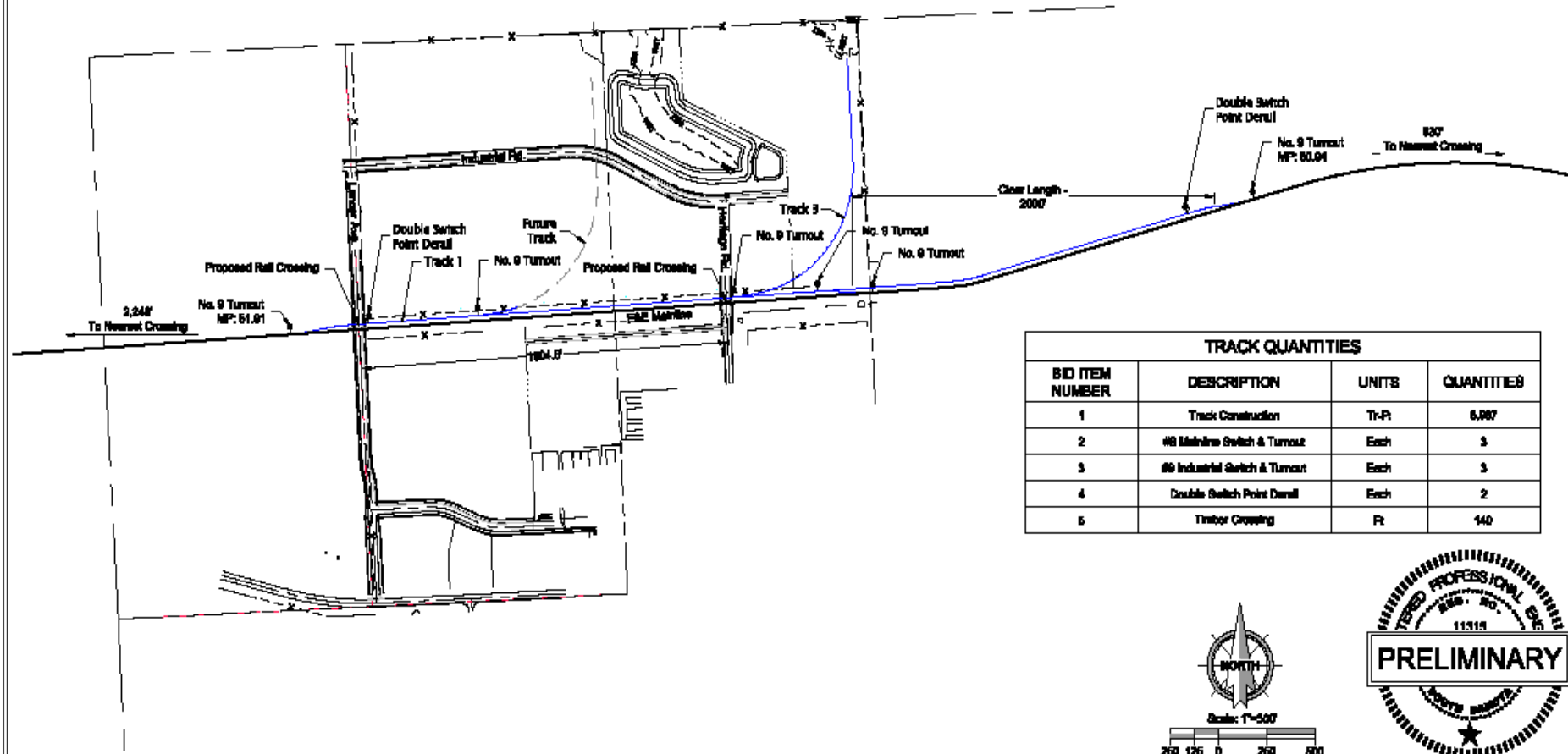
# ENCORE RAIL PARK

# OUTLINED OVERVIEW OF ENCORE PARK

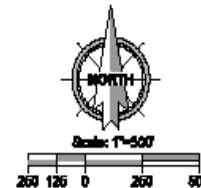


Proposed Site

TRACK LENGTHS		
Track	Clear Length	Total Length
1	4,207	6,085
2	1,335	1,488
Future	1,335	1,488



TRACK QUANTITIES			
BID ITEM NUMBER	DESCRIPTION	UNITS	QUANTITIES
1	Track Construction	Tt-Pt	6,087
2	#8 Mainline Switch & Turnout	Each	3
3	#8 Industrial Switch & Turnout	Each	3
4	Double Switch Point Derail	Each	2
5	Timber Crossing	Ft	440



Encore Rail Park is being developed to serve industrial rail users.

The 73-acre park is being designed to have two spurs off the Ellis & Eastern main line

Phase I will include a spur and turn out for a future spur

A run-a-round siding with cross overs is included for operational efficiency

Manufacturers, Transloaders & Warehousing are prospects

## ENCORE RAIL PARK

# ENCORE RAIL PARK

Encore Industrial Park  
Track Construction  
Preliminary Opinion of Probable Cost

Item	Description	Unit	Quantity	Unit Price	Total
1	Mobilization	LS	1	\$ 100,000.00	\$ 100,000.00
2	#9 Mainline Turnout, F&I	Each	3	\$ 125,000.00	\$ 375,000.00
3	#9 Industrial Turnout, F&I	Each	3	\$ 75,000.00	\$ 225,000.00
4	Double Switch Point Derail	Each	2	\$ 20,000.00	\$ 40,000.00
5	115# Track Construction	Tr-Ft	6,069	\$ 175.00	\$ 1,062,075.00
6	Grading	LS	1	\$ 250,000.00	\$ 250,000.00
7	Subballast	LS	1	\$ 300,000.00	\$ 300,000.00
8	Geosynthetic Fabric/Geogrid	SqYd	24,000	\$ 3.50	\$ 84,000.00
9	Erosion Control	LS	1	\$ 10,000.00	\$ 10,000.00
10	Drainage Structures	LS	1	\$ 10,000.00	\$ 10,000.00
11	Railroad Protective Insurance	LS	1	\$ 5,000.00	\$ 5,000.00

**Total: \$ 2,461,075.00**

Engineering: \$ 150,000.00

Environmental Engineering: \$ 40,000.00

Contingency: \$ 369,000.00

**Total Cost: \$ 3,020,075.00**

An aerial photograph showing a long freight train with numerous white and blue railcars moving through a rural landscape. To the left of the train, there is a large industrial or agricultural facility with several long, low-profile buildings with blue roofs and one building with a red roof. The surrounding area is dominated by vast green fields, likely corn, with some roads and utility lines visible. The sky is clear and bright.

LOOKING WESTERLY



LOOKING TO THE SOUTHEAST





QUESTIONS?