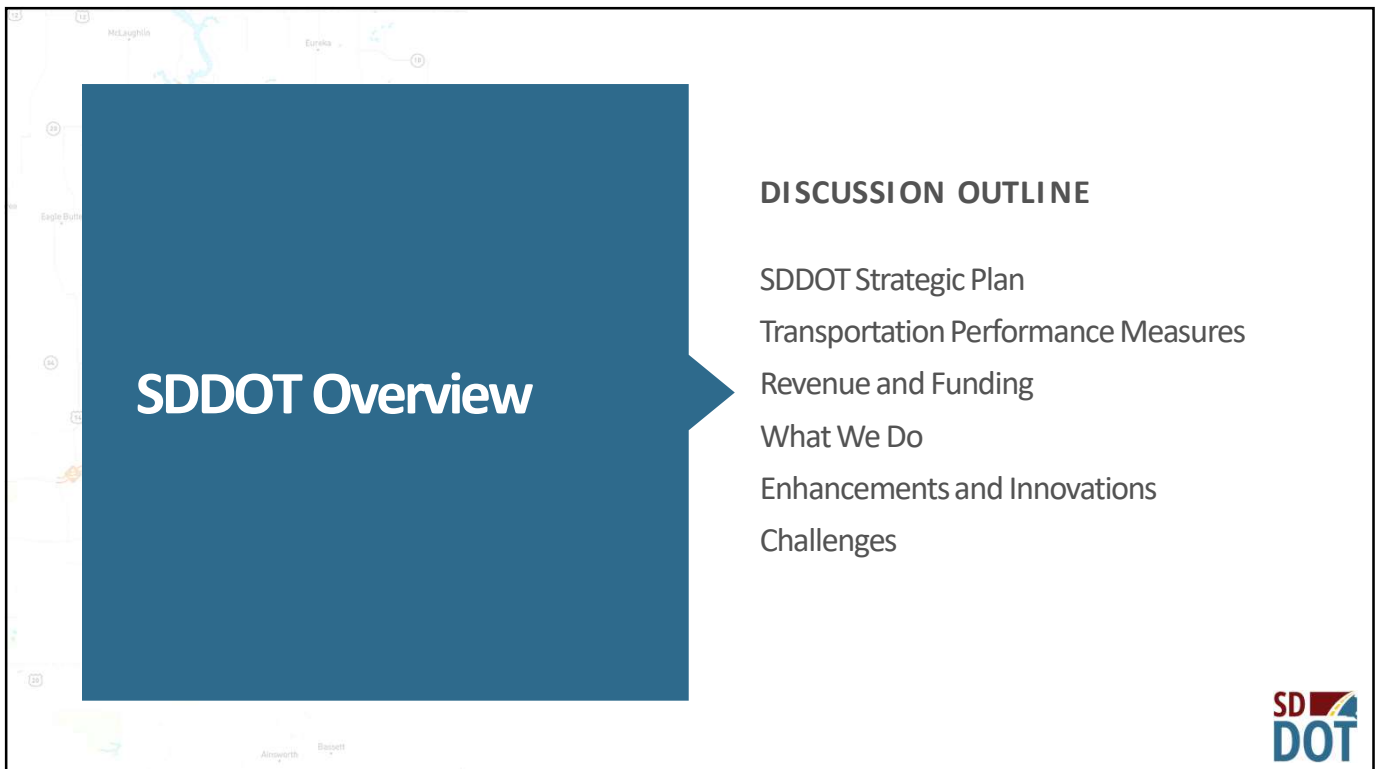


1



2

# SDDOT Strategic Plan

**Mission:** To efficiently provide a safe and effective public transportation system.

**Vision:** Better lives through better transportation by being the best.



3

## SDDOT STRATEGIC OBJECTIVES



SAFETY

**Everyone Home Safe Everyday**



WORKFORCE

**Value All Team Members**



SERVICE

**Provide Excellent Services**



PROCESSES

**Continually Improve**



ASSETS

**Provide the Best Transportation System**



4

## Core Values

- High Ethical Standards
- Stewardship
- Transparent Public Service
- Safety
- Teamwork\*
- Innovation\*

*\*Denotes a new core value*



5

## Transportation Performance Measures

One of the primary purposes for establishing targets was to determine the annual investment necessary to maintain pavements at the targeted conditions.

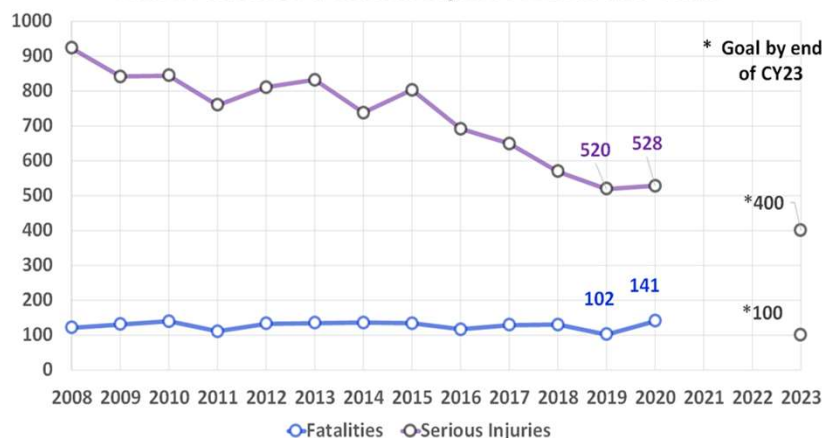


6

# Highway Safety

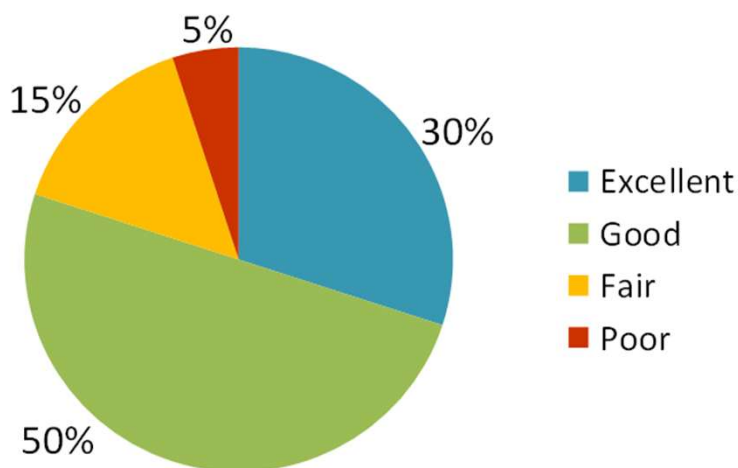


Traffic Fatalities & Serious Injuries Trends and Goals



7

# Highest Return-on-Investment Pavement Distribution Goal



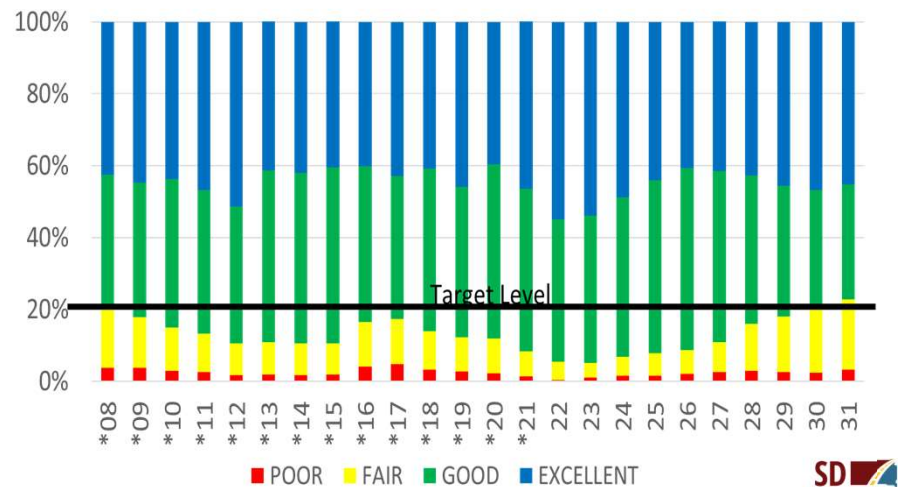
8



## Pavements



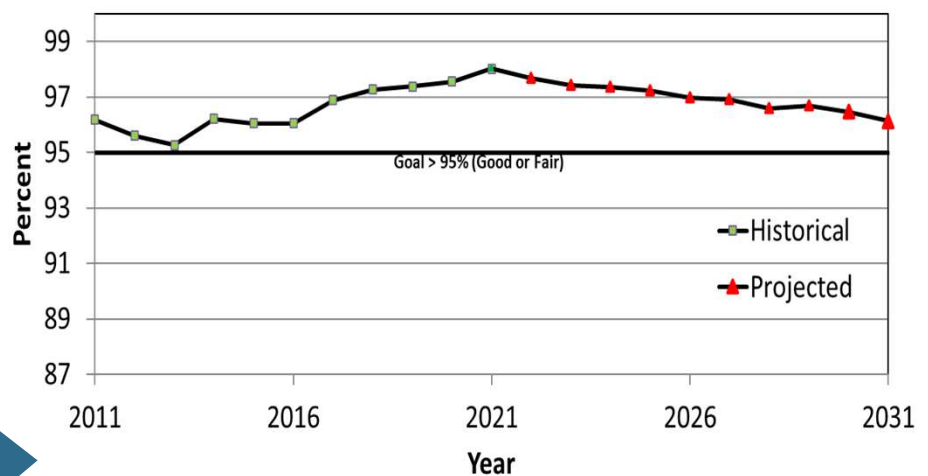
## Historical & Projected Future Pavement Condition Based on Current Investment



9



## Historic & Predicted Bridge Condition

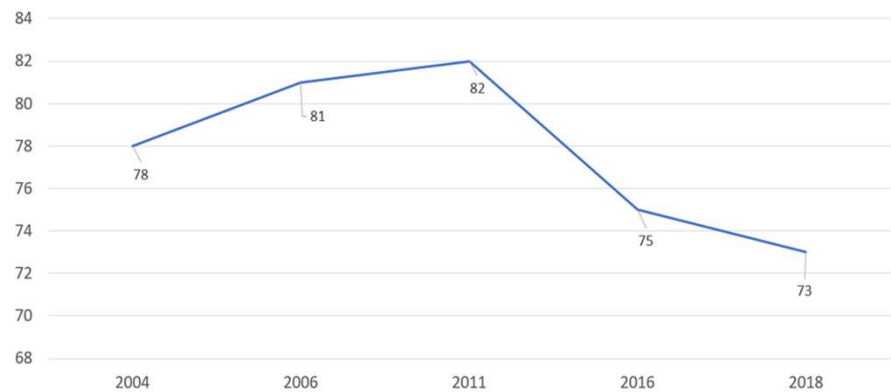


10

## Customer Satisfaction

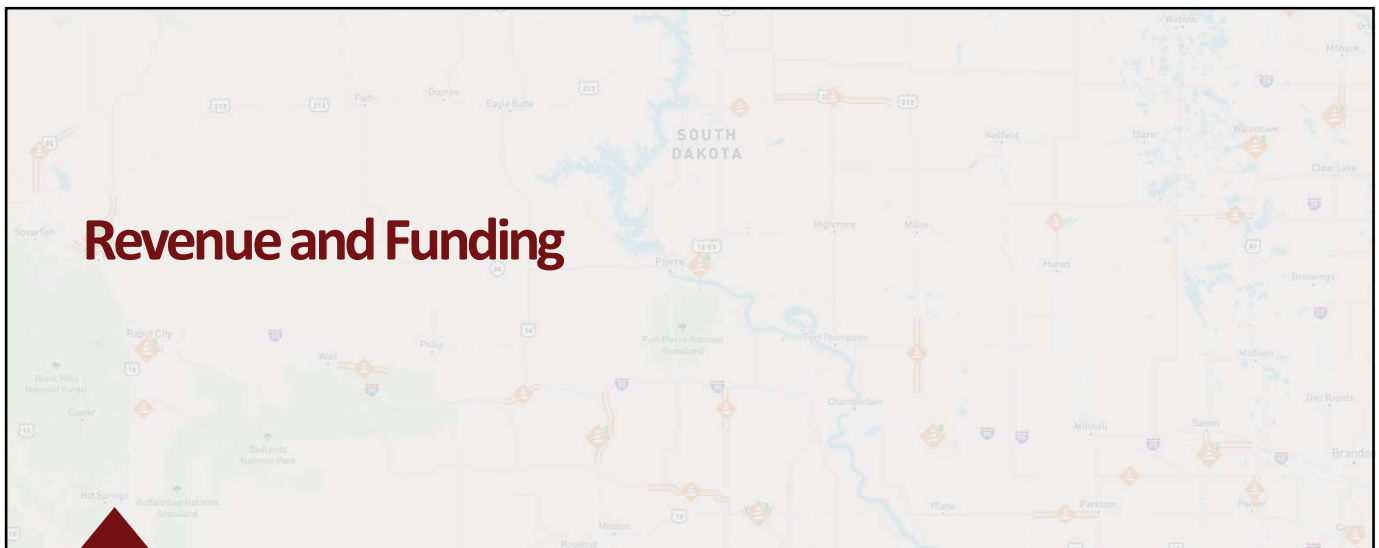


### Percent Satisfied or Very Satisfied with Overall Performance



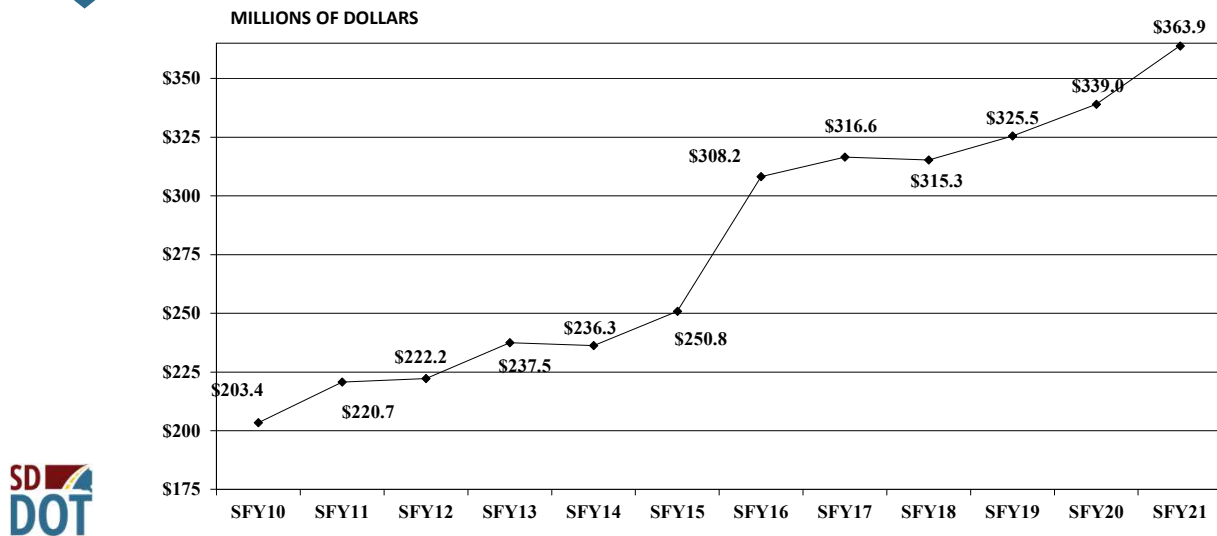
11

## Revenue and Funding



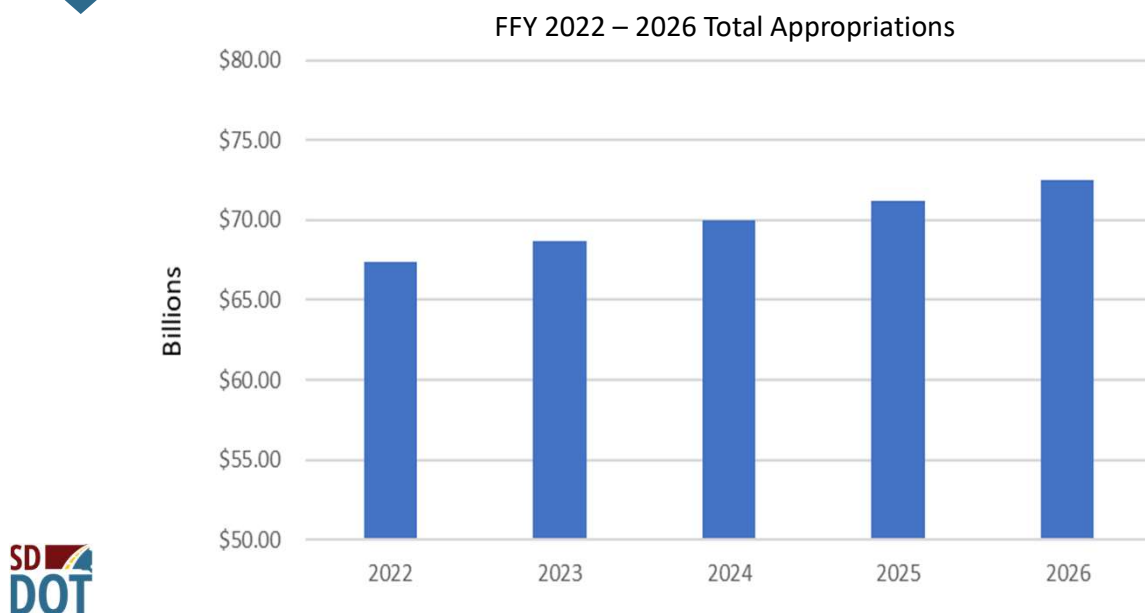
12

## TOTAL STATE HIGHWAY FUND REVENUES SFY2010 – SFY2021 COLLECTIONS



13

## Bipartisan Infrastructure Bill – Highways and Bridges



14

# Bipartisan Infrastructure Bill – Public Transit



## Formula Programs

### Urbanized Area Formula

- 30% increase to program funding levels from FY21 to FY22 (\$4.8B to \$6.3B)
- Increases the set-aside for Small Transit Intensive Cities from 2% to 3%
- Requires recipients in large UZAs to use at least 0.75% of their funds for safety-related projects eligible under the Urbanized Area Formula program (Section 5307)

### Formula Grants for Rural Areas

- 30% increase to program funding levels from FY21 to FY22 (\$601M to \$781M)
- Provides \$229 million for Public Transportation on Indian Reservations over five years
- 20% of the Public Transportation on Indian Reservations funds must be distributed on a competitive basis, while the remainder must be apportioned by formula
- 3% of Rural Formula funding is available for the Appalachian Development Public Transportation Assistance program

### Buses and Bus Facilities

- 30% increase to program funding levels from FY21 to FY22 (\$461M to \$599M)
- The Formula National Distribution is increased to \$4 million for each State and \$1 million for each territory
- Encourages use of Innovative Procurement tools, such as cooperative procurement contracts or state cooperative procurement schedules

15

# Bipartisan Infrastructure Bill – Rail and Airports

## Rail

Consolidated Rail Infrastructure and Safety Improvement (CRISI) Grants – Increase of \$5 Billion

- Special Transportation Circumstance (STC) Grants – Dedicated Rail funding for SD

## Airports

Additional \$25 Billion for Airport Facility Funding

- Airport Improvement Program (AIP) - Additional \$20 Billion
  - \$15 Billion distributed by formula
  - \$ 5 Billion distributed by discretionary
- \$5 Billion for other investments (Air traffic controller, towers, etc.)
- For SD – Amounts to Approx. \$16.4 Million/per year for AIP



16



## Federal COVID Relief Funding

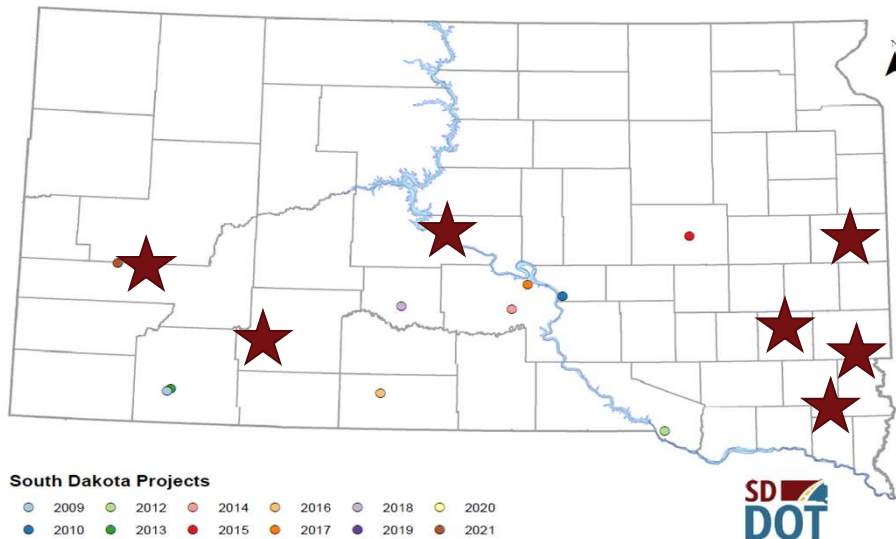
	CARES	CRRSA	ARPA
Airports	\$38.4M	\$10.2M	\$16.4M
Transit	\$22.5M	\$.072M	\$3.4M
Highway		\$69.9M	
<b>TOTAL</b>	<b>\$60.9M</b>	<b>\$80.17M</b>	<b>\$19.8M</b>



17

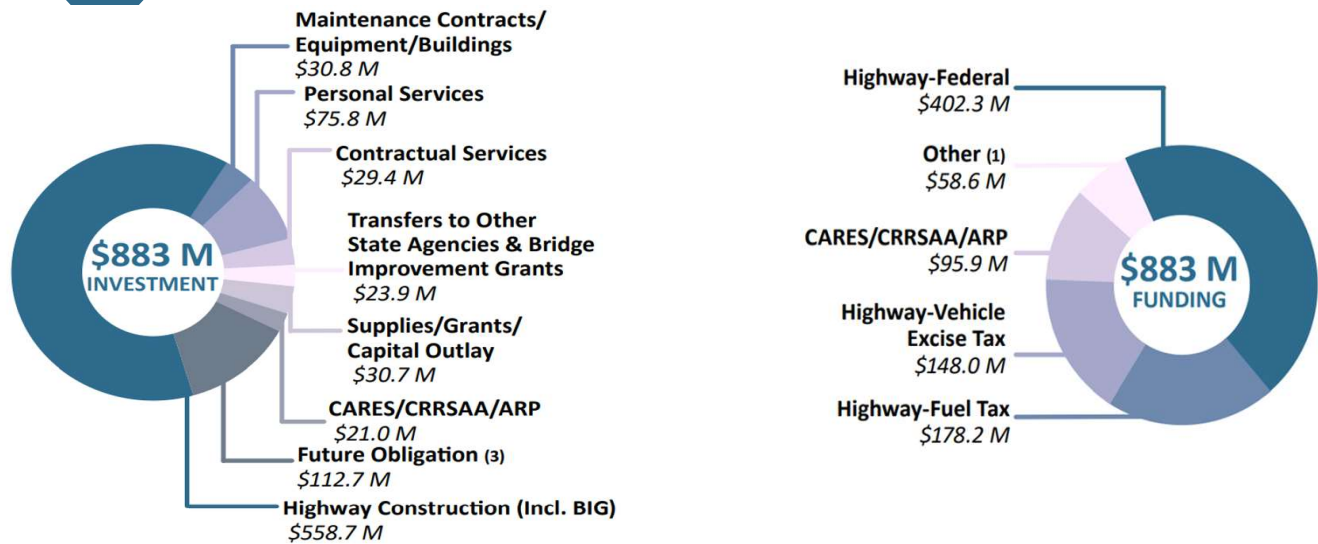
## USDOT Grant Map

RAISE/BUILD/TIGER 2009-2021 Awarded Projects



18

# FY21 Highway & Transit Funding & Investment



19

## What Do We Do?

20

## Boards & Commissions



- Transportation Commission
- Aeronautics Commission
- Railroad Board & Authority

21

## Planning



South Dakota Department of Transportation

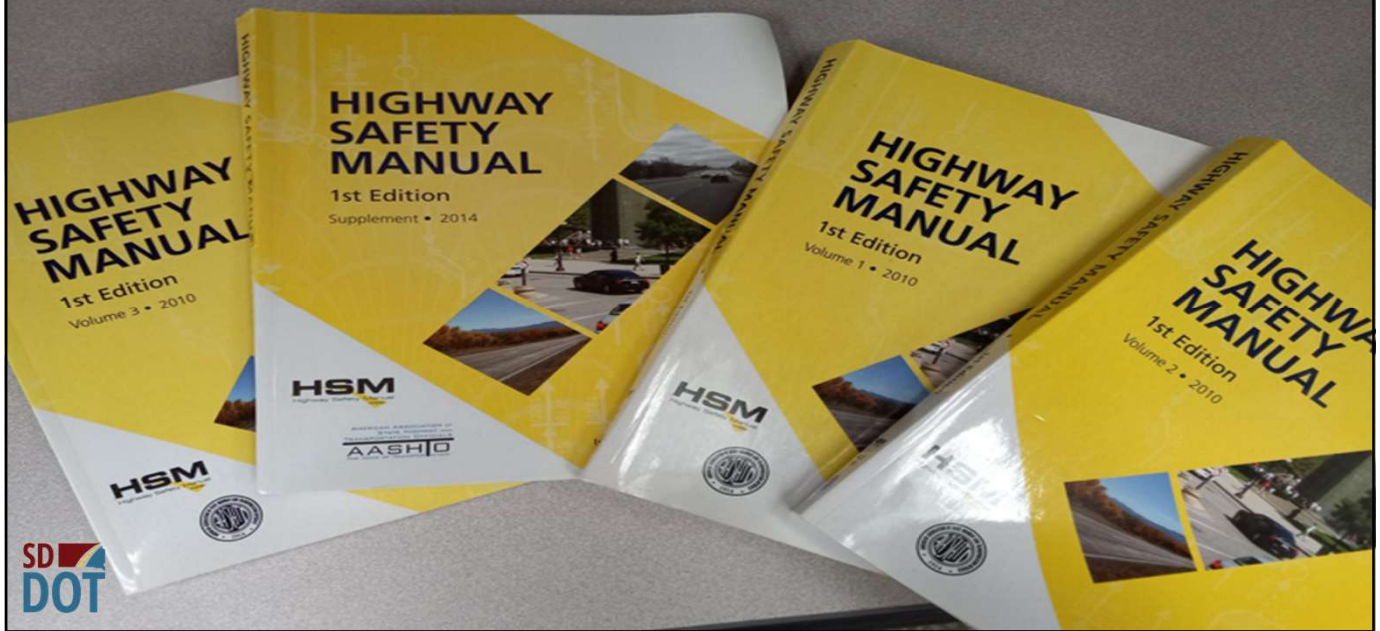
# 2021 - 2024 STIP

Statewide Transportation Improvement Program



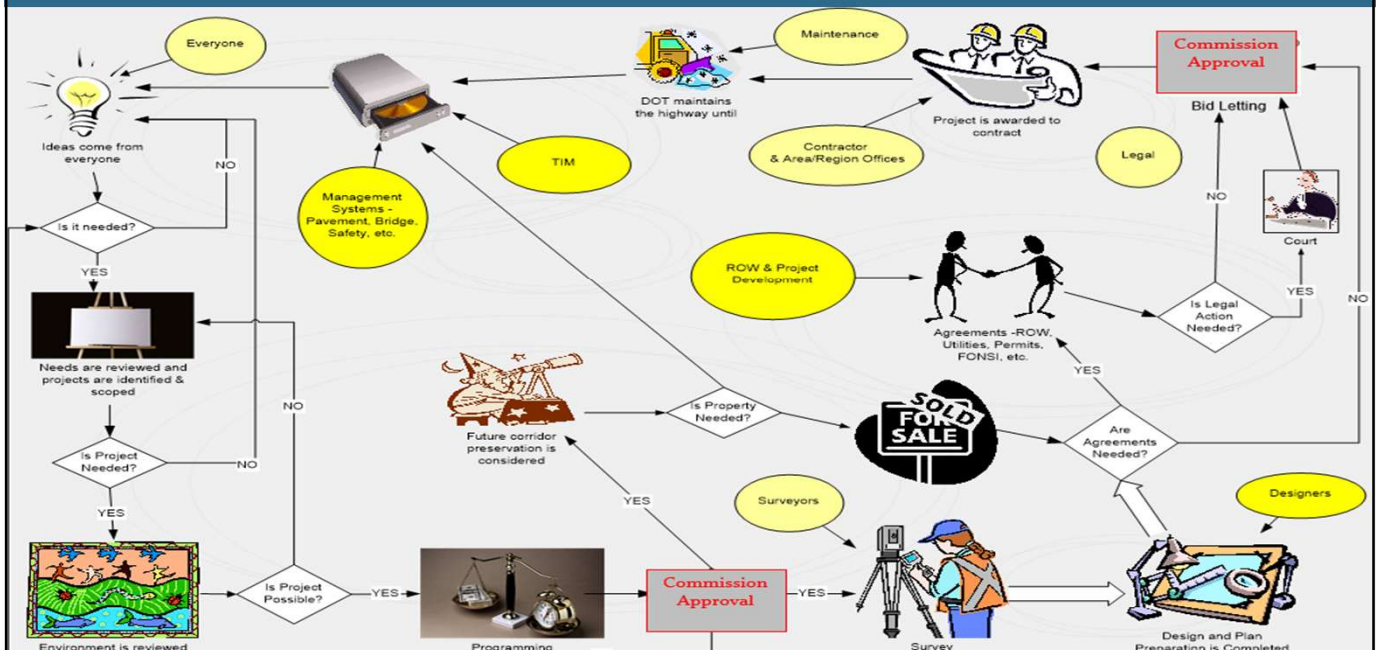
22

# Safety



23

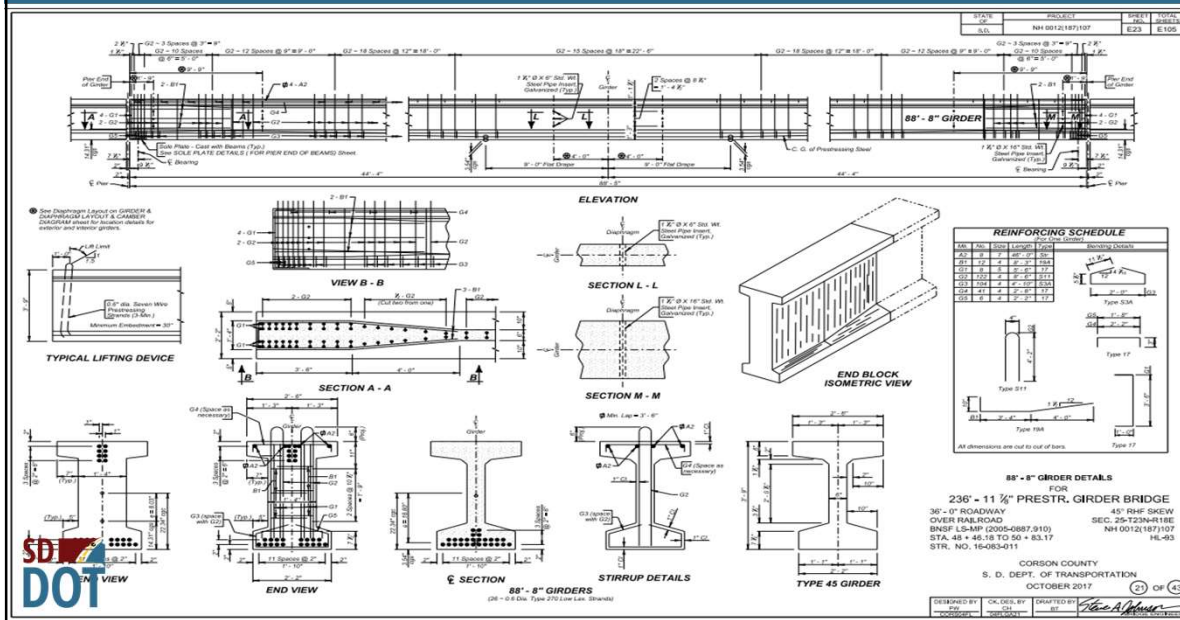
# Project Development Process



24



# Design



25

# Construction



- Project Management
- Material Testing
- Quality Control Inspections
- Administering Contracts
- Public Outreach and Relations



## Veteran's Parkway Ribbon Cutting Monday, Feb. 15, 2021

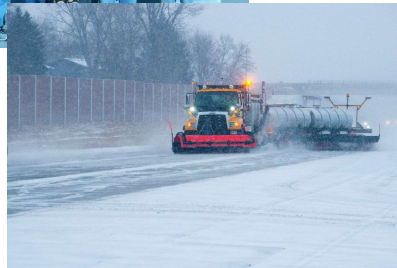
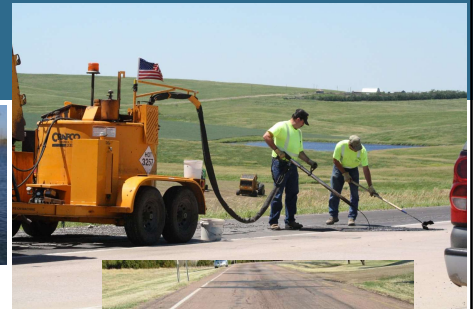


26

# Maintenance & Operations



- Winter Maintenance
- Traveler Information
- Pavement Preservation
- Roadside Maintenance
- Pavement Marking / Signing
- Drainage / Culverts
- Bridge Preservation
- Emergency Response



27

# State and Local Involvement

Federal and State Funding Allocation to Local Governments		
	Millions	Federal and/or State
STP - Counties	\$14.0	State
STP - Cities	\$12.7	State
Match on STP Funds	\$2.3	State
Bridge Improvement Grants (BIG)	\$19.1	State
Bridge Inspections	\$1.6	Federal
Safety Projects	\$11.5	Federal
Statewide Striping Projects	\$0.4	State
Railroad Crossing Improvement Projects	\$1.8	Federal
Transportation Alternative Program (TAP)	\$3.8	Federal
Planning and Research Funds	\$2.3	Federal
Transit Planning Funds	\$0.6	Federal
Community Access Grants	\$3.0	State
Agri-Business Grants	\$1.0	State
Local Federal Bridge Replacement Program	\$19.5	Federal
Match on Federal Bridge	\$3.3	State
Local Federal Bridge Removal Program	\$1.6	Federal
CRRSA	\$6.0	State
<b>Total</b>	<b>\$104.5</b>	



28



## Other Modes of Transportation



**PUBLIC TRANSIT**



**AIRPORT /  
AERONAUTICS**



**STATE OWNED  
RAILROADS**



29

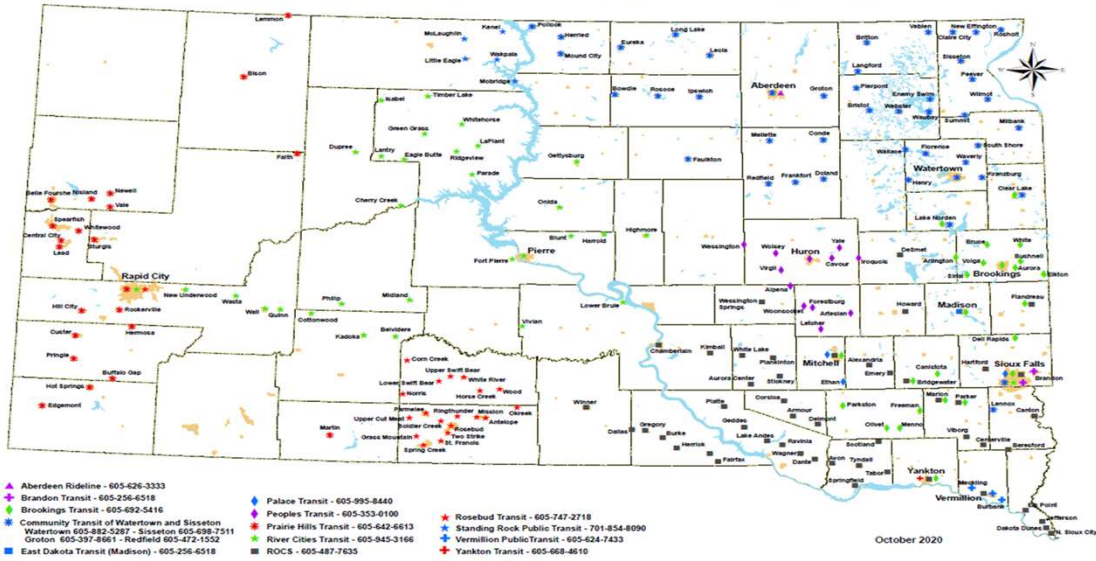
## Transit



30

# SD Public Transit Network

South Dakota Communities Served By Rural Transit Providers



31

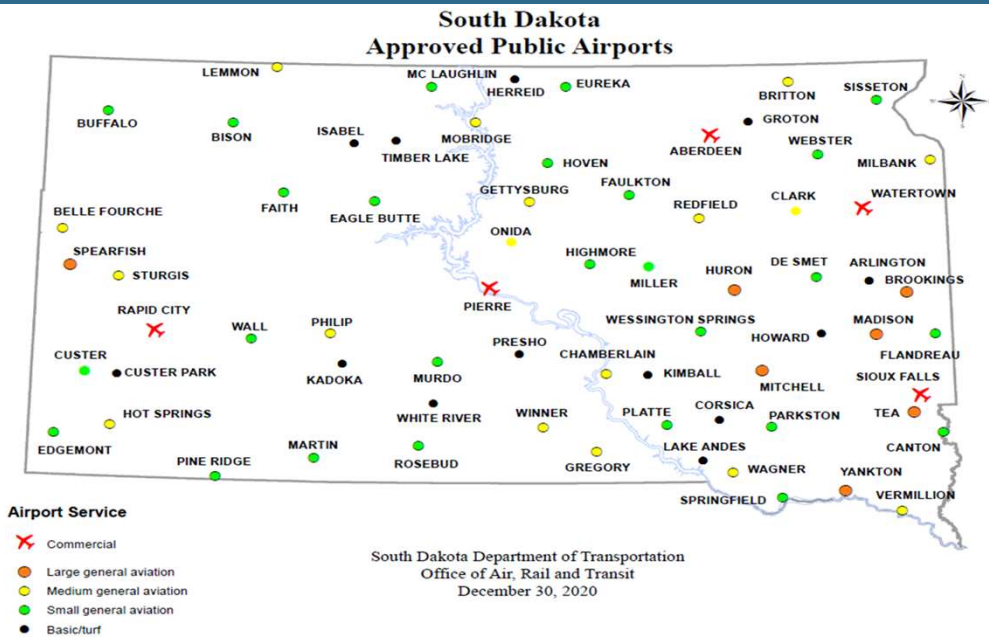
## Aeronautics



32



## South Dakota Public Airports



33

## State Owned Railroads

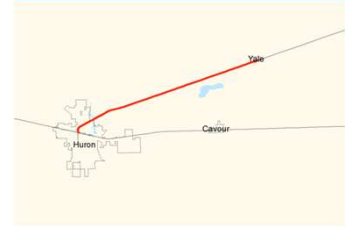


34

# South Dakota Railroad Lines Still Under State Ownership



YALE LINE

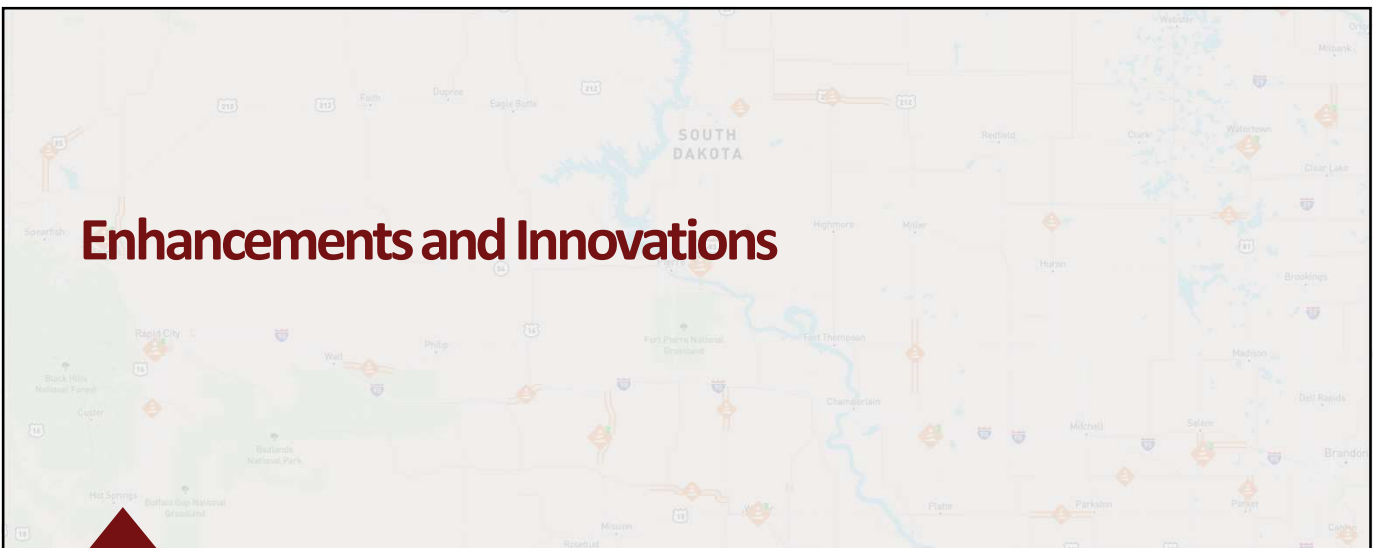


NAPA TO  
PLATTE LINE



35

## Enhancements and Innovations



36

# Enhancements and Innovations



## DOT Recognized by Performance Excellence Network at Achievement Level

- Notable Strengths
  - Customer Centered Culture
  - Strategic Planning
  - Standardized Work Processes
  - Focus on Success



37



# Enhancements and Innovations


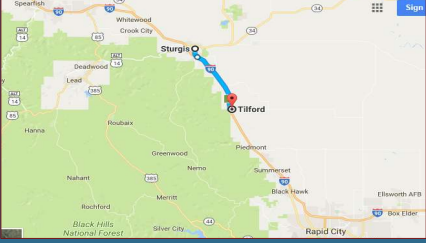


## Stakeholder & Partner Involvement



38

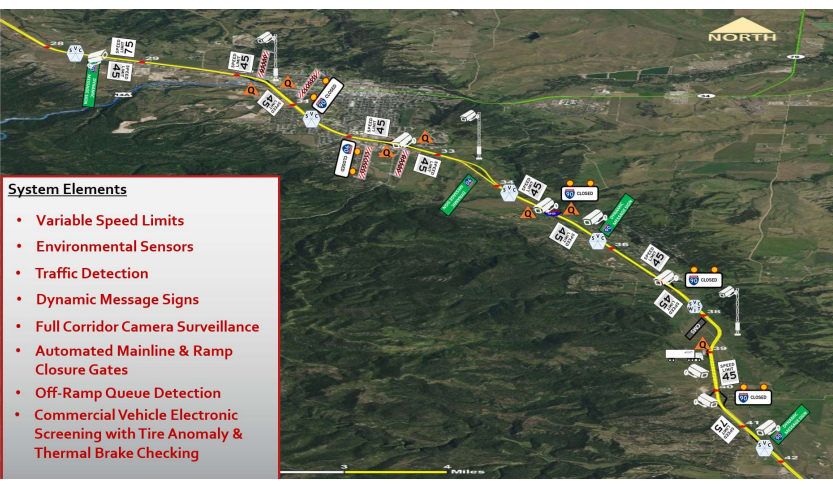


**Enhancements and Innovations**


PROCESSES

## Variable Speed Limits



**System Elements**

- Variable Speed Limits
- Environmental Sensors
- Traffic Detection
- Dynamic Message Signs
- Full Corridor Camera Surveillance
- Automated Mainline & Ramp Closure Gates
- Off-Ramp Queue Detection
- Commercial Vehicle Electronic Screening with Tire Anomaly & Thermal Brake Checking



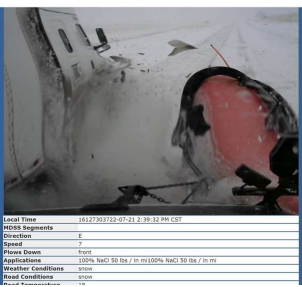
39



*SDCL 32-17-42 Blue Lights*

**Enhancements and Innovations**

SAFETY



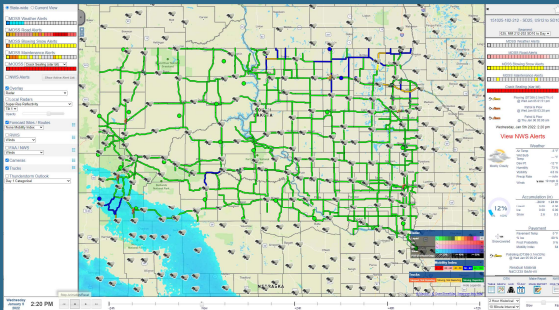

### Snow Plow Accidents by FY



Fiscal Year	Snow Plow Crashes	Normalized	Rate
FY14	23	16	11
FY15	10	10	6
FY16	17	15	9
FY17	11	10	5
FY18	25	16	10
FY19	33	18	10
FY20	14	9	6
FY21	14	14	9



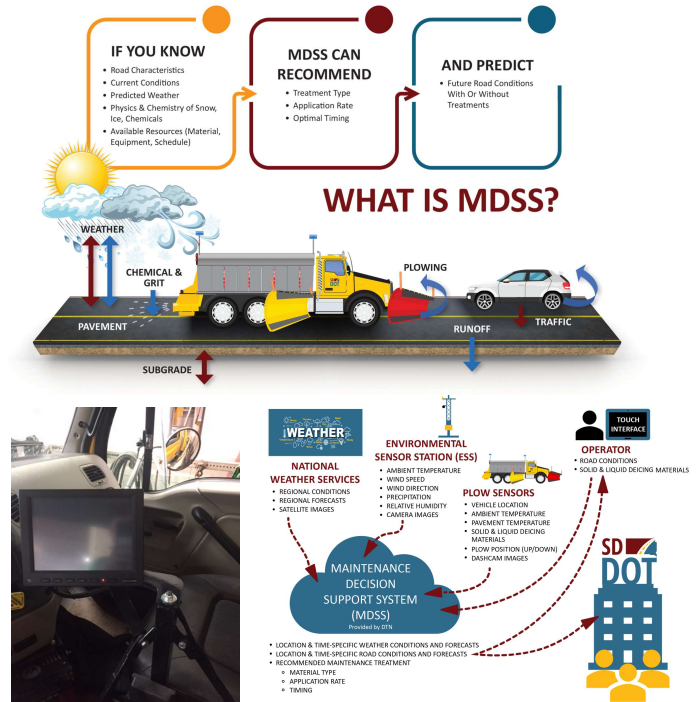
40



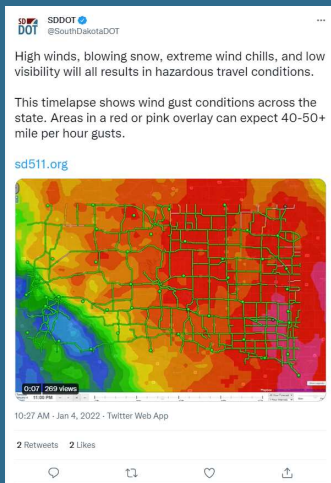
## Enhancements and Innovations



## Maintenance Decision Support System (MDSS)



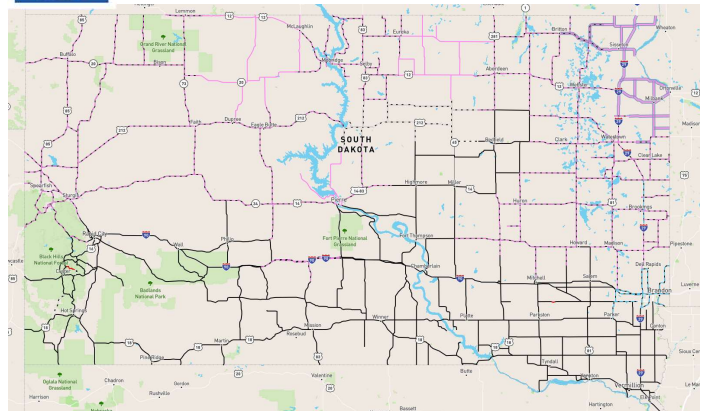
41



## Enhancements and Innovations

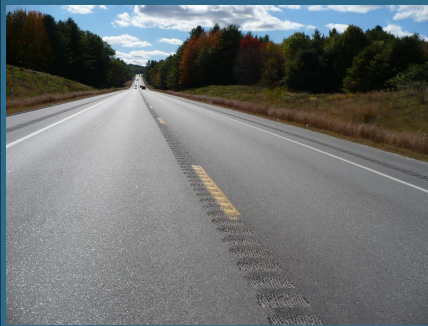


## SD511 – Traveler Information System



42





## Enhancements and Innovations



### Safety Enhancements

- HFST - High Friction Surface Treatment
- Rumble Strips

High friction surface treatment on more than 30 horizontal curves  
reduced winter road condition crashes by



300 miles of shoulder rumble strips on two-lane county and tribal roads  
reduced road departure crashes by



350 miles of centerline rumble strips reduced on two-lane rural roadways  
reduced fatal/injury crashes by



reduced cross-centerline crashes by



43



## Enhancements and Innovations



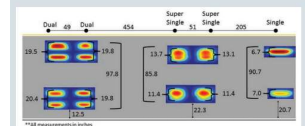
### Port of Entry – Commercial Vehicles

On behalf of the South Dakota Trucking Association membership, I want to thank all parties involved in this change to the list of South Dakota's LCV approved routes. This cooperative effort took nearly two decades to accomplish but the result was a monumental change that brought greater efficiency and economic benefits to the state.

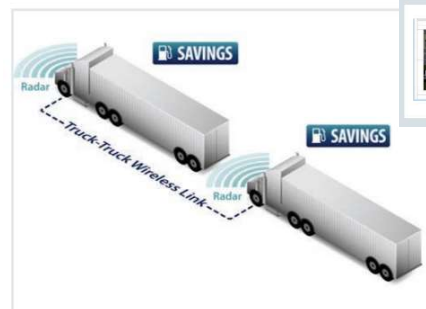
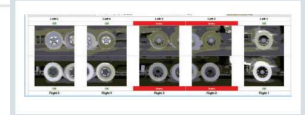
— Myron Rau,  
Executive Director, SD Trucking Association



In-pavement sensors detect tire inflation at 75 mph.



This display shows that the right front tire of an 18-wheeler is underinflated.



44

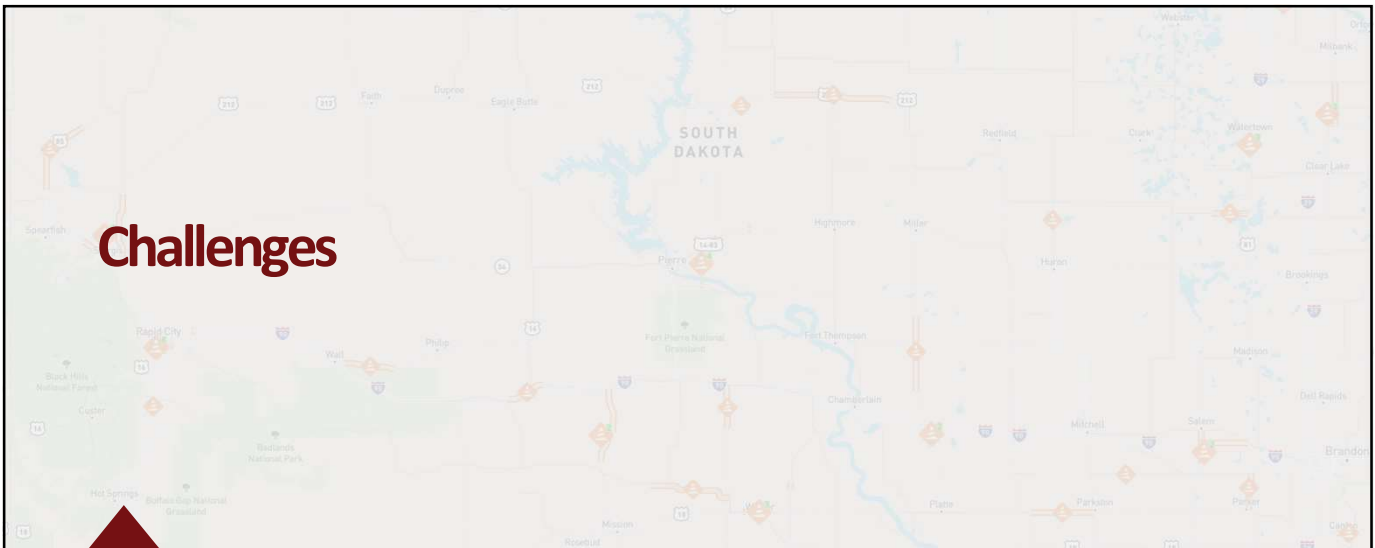


## Enhancements and Innovations



45

## Challenges



46



## Challenges



### Federal

- Infrastructure & Investment Jobs Act (IIJA or BIL)
  - Appropriations
  - Electric Vehicle Charging
  - Federal Rule Promulgation
  - Federal Mandates
    - Green House Gas

### State

- Supply Chain
- Inflation
- Workforce

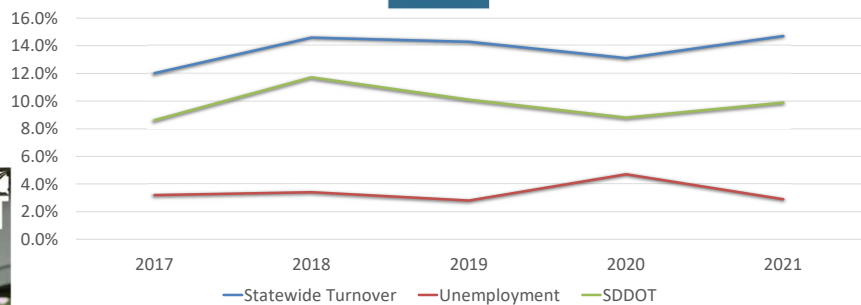


47

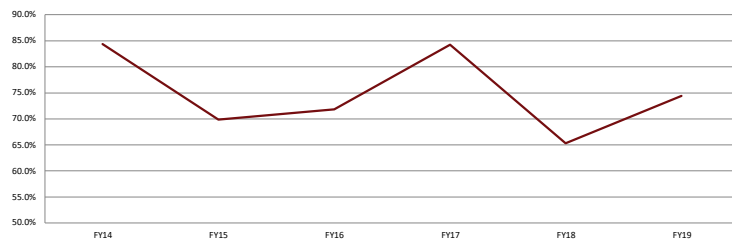


## Challenges

### Workforce



#### Percent New Hires Retained After 18 Months



48



# SAFETY IN ALL WE DO



The SDDOT strives to get everyone home safely, everyday. Whether you are a part of the traveling public, an SDDOT contractor or state employee, our number one priority is your safety.

Please take safety precautions seriously and take the steps to get home to the people who are counting on you.



49

## Questions???

### Mailing Address

Department of Transportation  
Becker-Hansen Building  
700 E Broadway Ave  
Pierre, SD 57501

### Email Address

[joel.jundt@state.sd.us](mailto:joel.jundt@state.sd.us)

### Phone Numbers

605-773-5105



50