



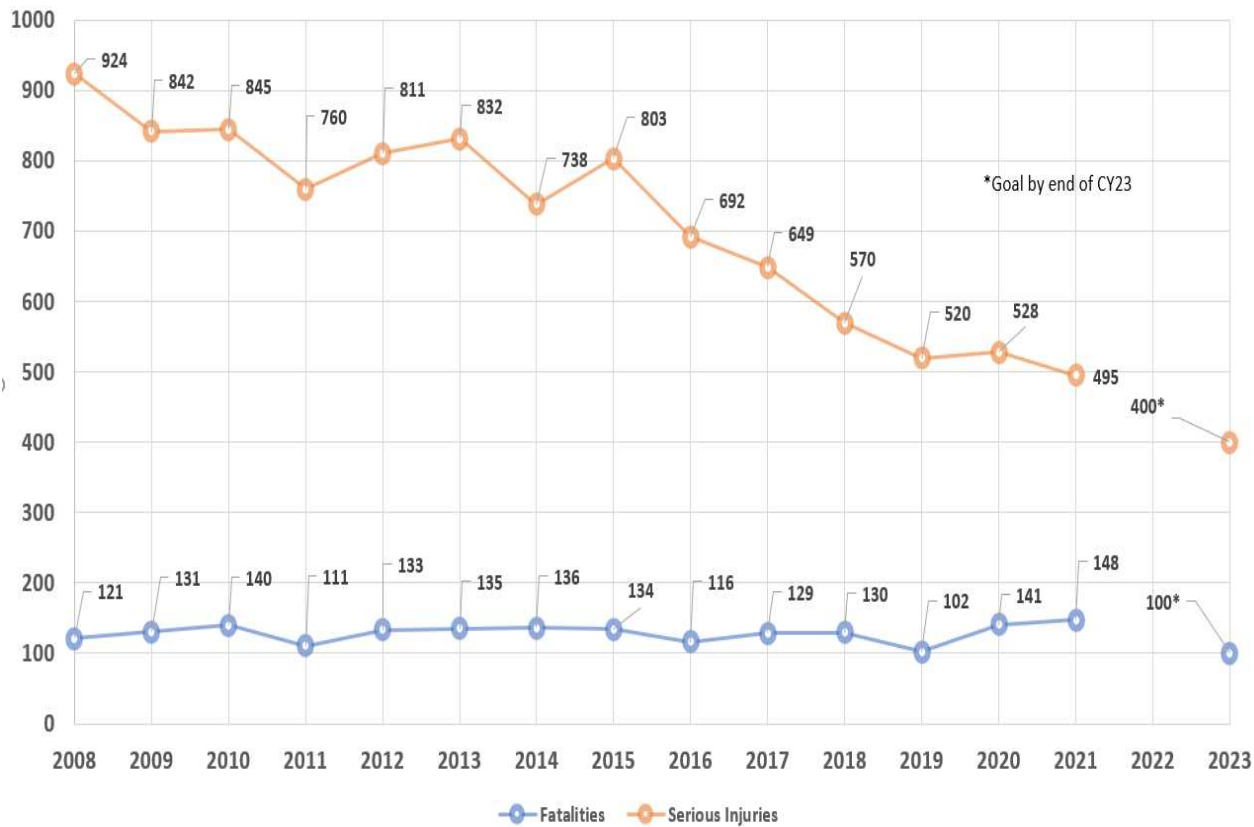
Revisions to the Statewide Transportation Improvement Program (STIP)

SOUTH DAKOTA DEPARTMENT OF TRANSPORTATION

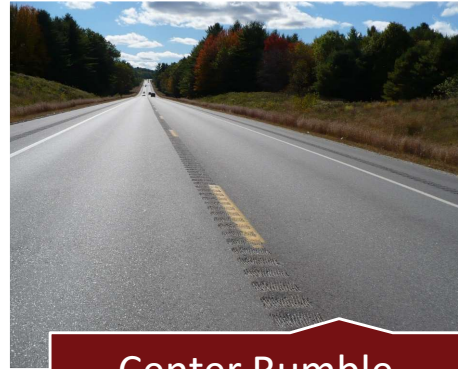
Director Mike Behm PE, Division of Planning & Engineering

Everyone Home Safe Everyday

Traffic Fatalities & Serious Injuries Trends and Goals



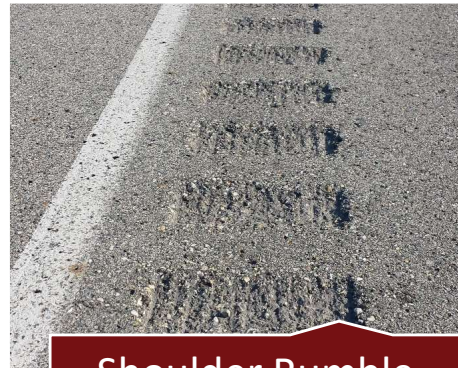
Safety Enhancements



Center Rumble Strips



High Friction Surface Treatment (HFST)

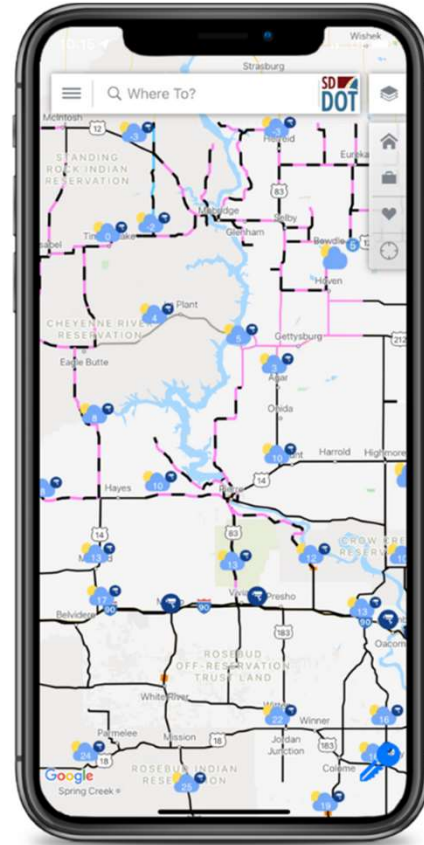


Shoulder Rumble Strips

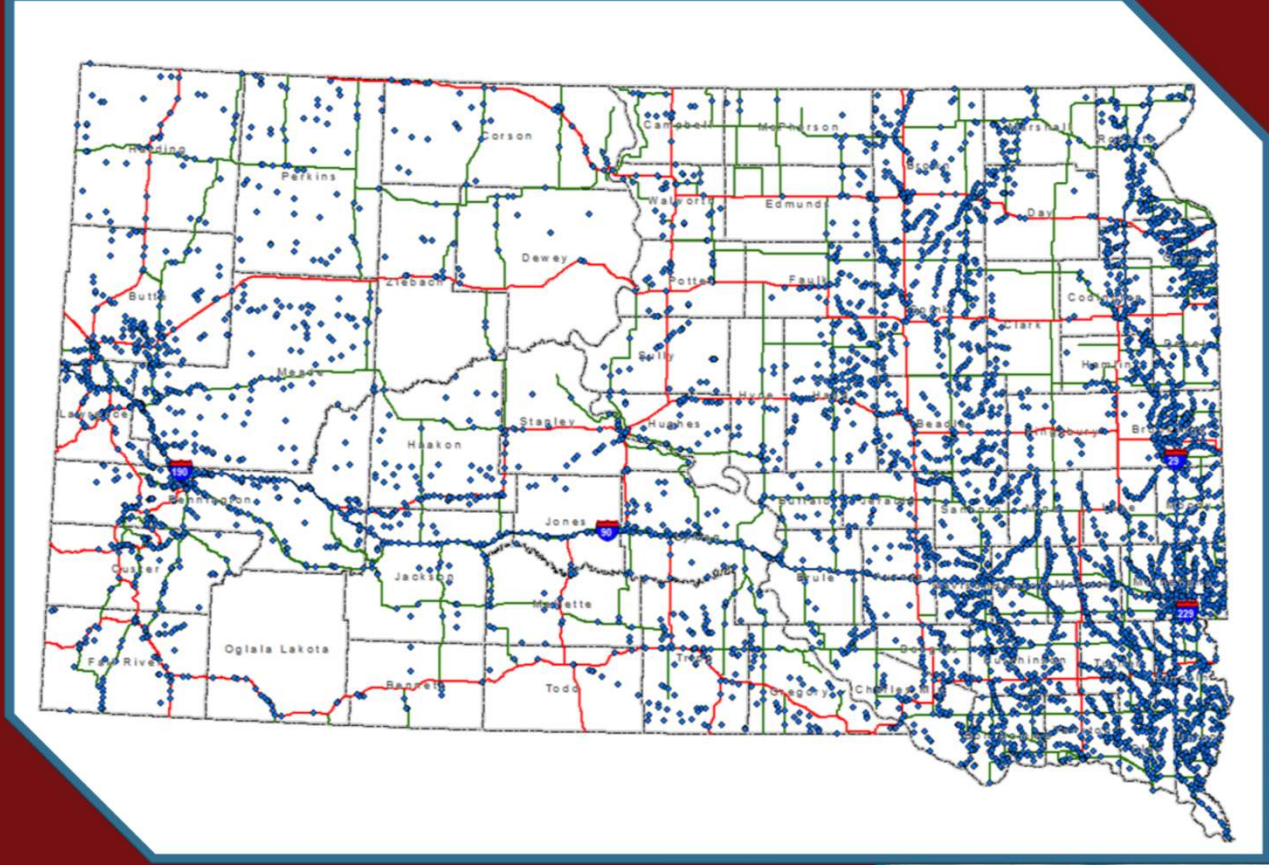


Application of HFST

Reliable Transportation



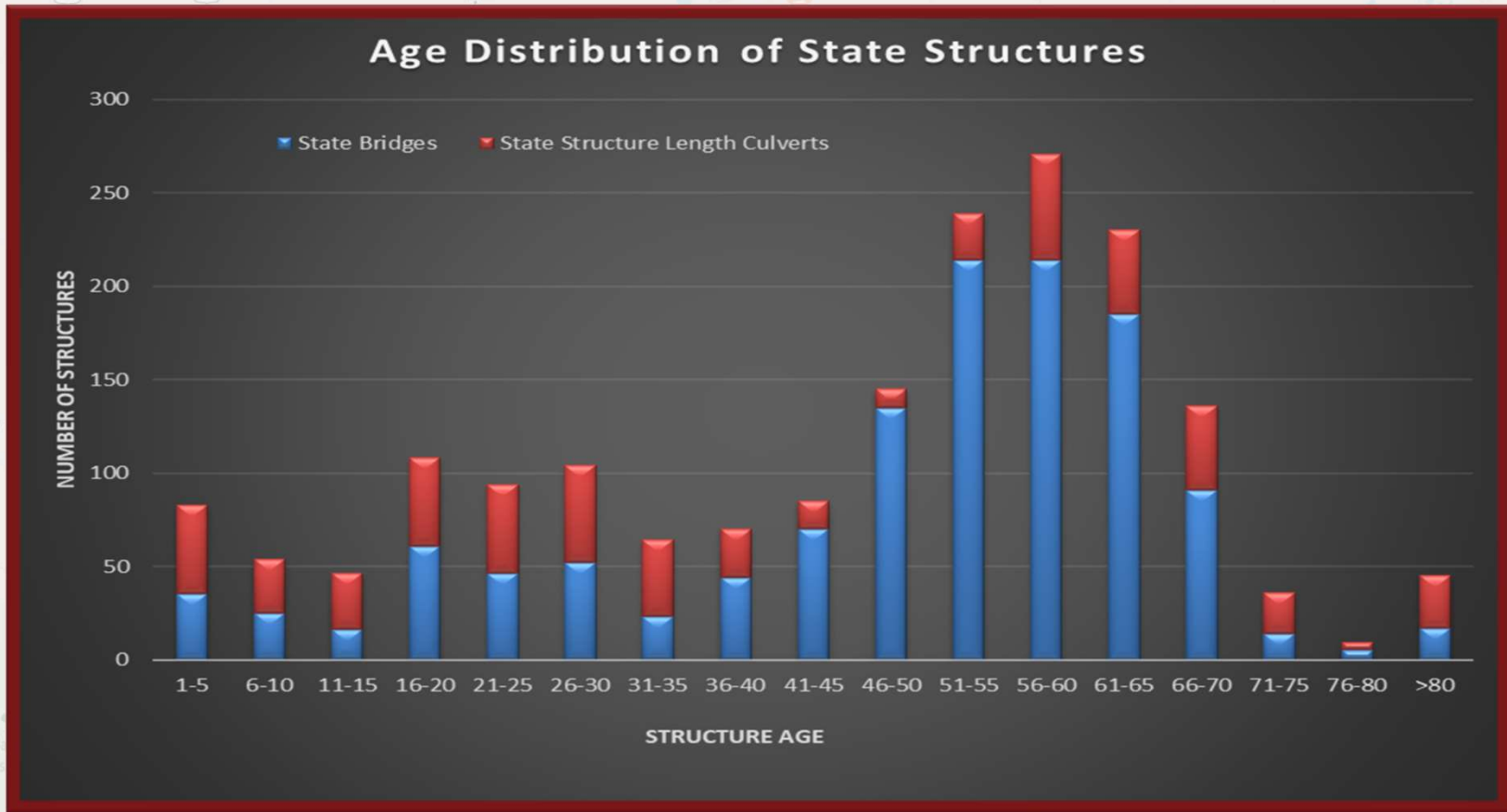
Provide the Best Transportation System

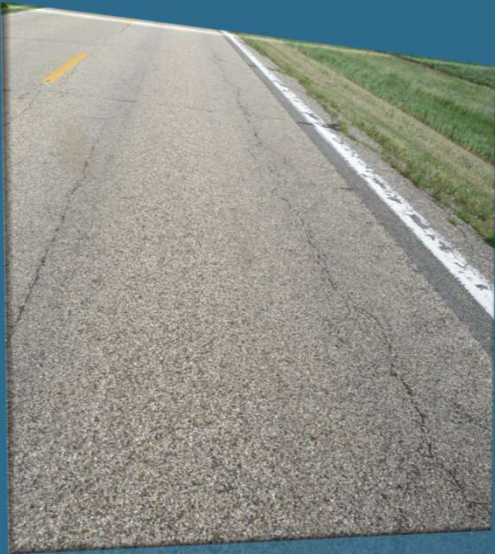


SD
DOT



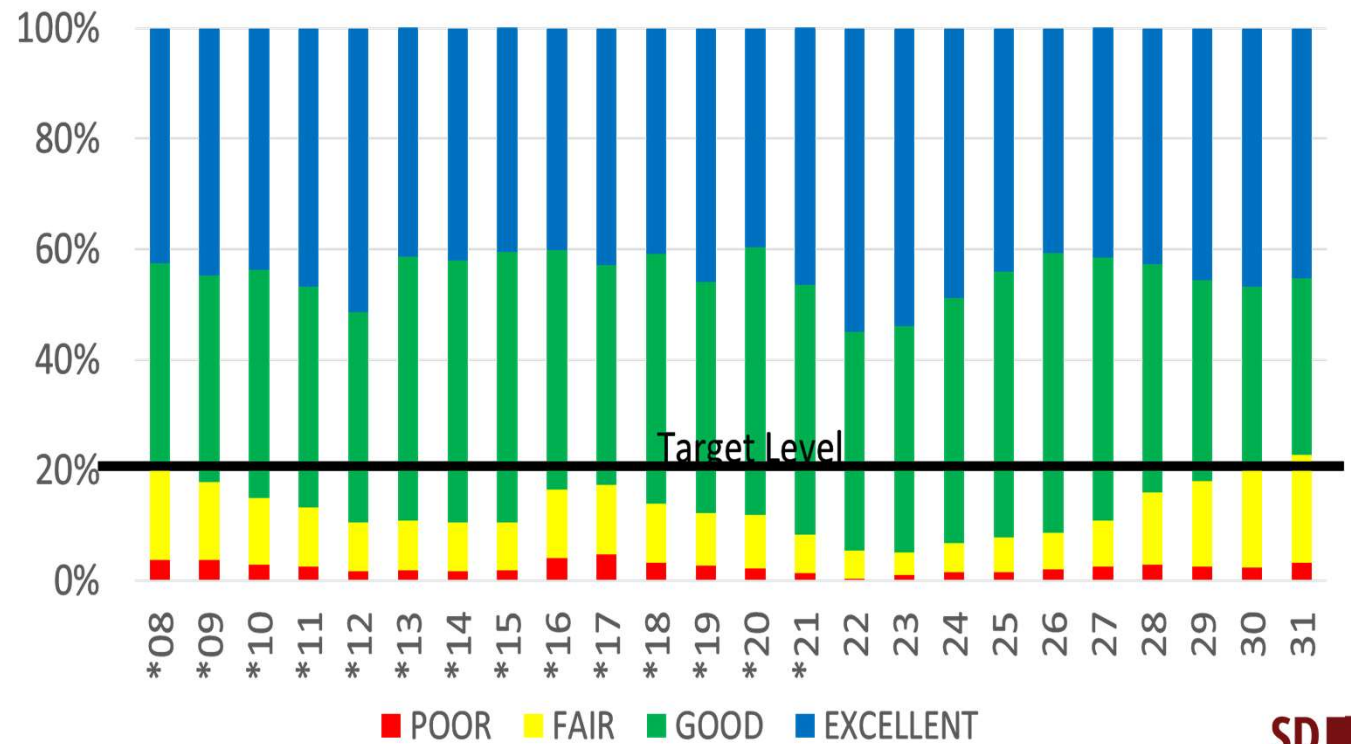
Average age of State-owned Structures in South Dakota is 46 years old
54% of state-owned bridges are at least 50 years old





Provide the Best Transportation System

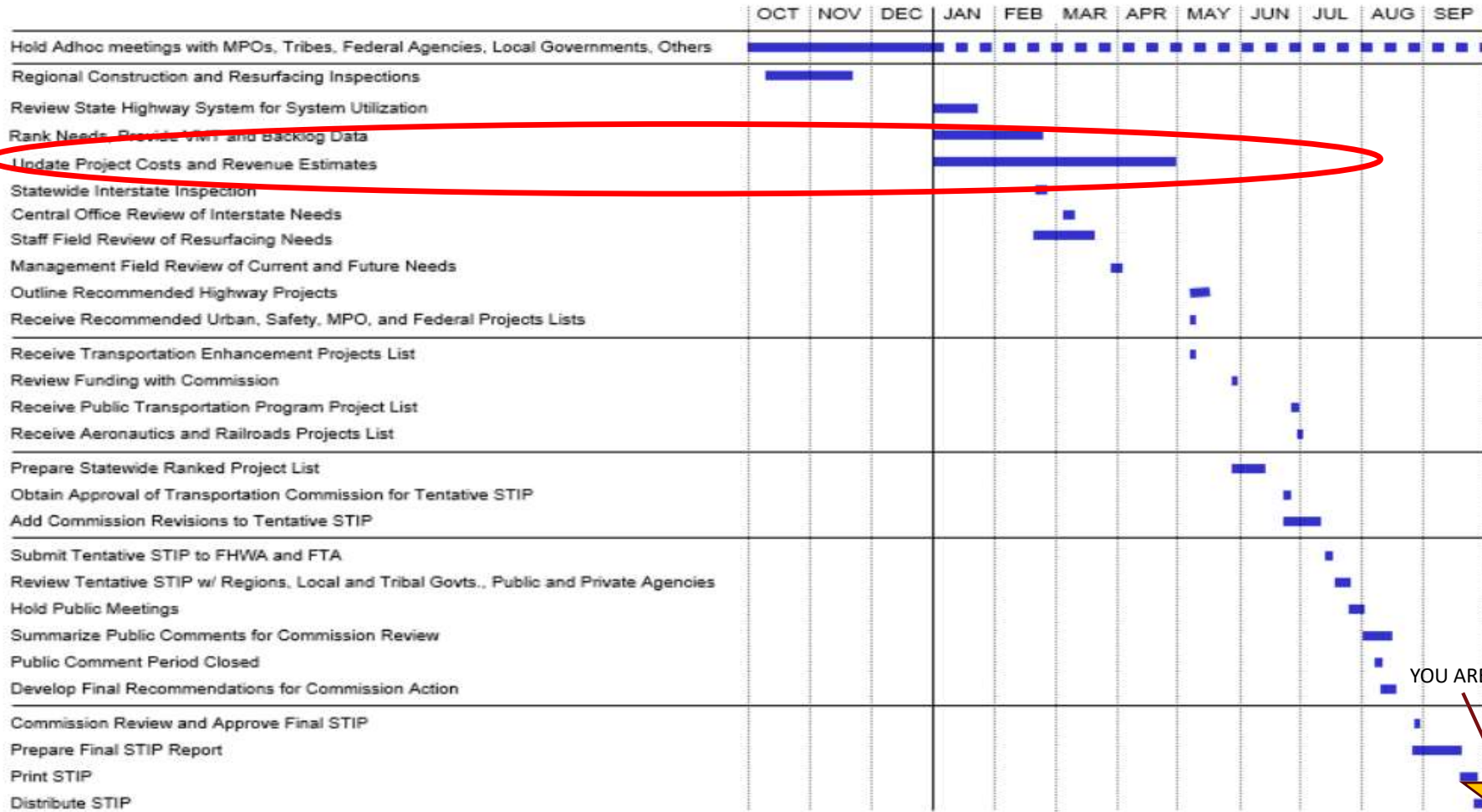
Historical & Projected Future Pavement Condition Based on Current Investment



Pavements



Schedule for the Development of the Statewide Transportation Improvement Program (STIP)



YOU ARE HERE



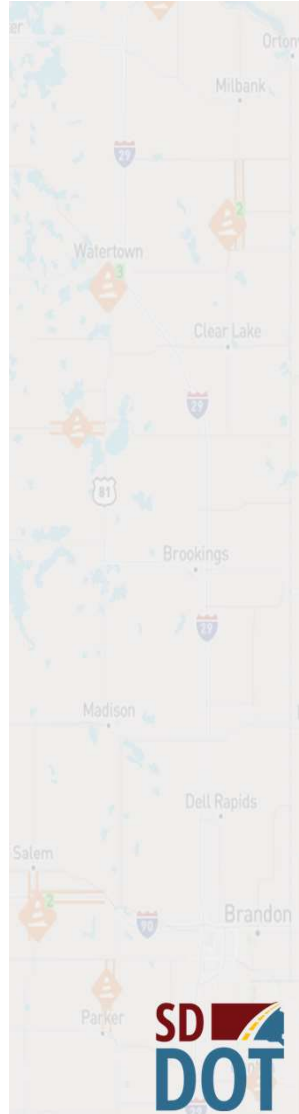


2022 TIP

STATEWIDE TRANSPORTATION
IMPROVEMENT PROGRAM

SOUTH DAKOTA
DEPARTMENT OF
TRANSPORTATION

Sorted by County - Prepared By: Division of Planning & Engineering, Office of Project Development - 700 E Broadway Ave. Pierre, SD 57501



Planning/Programming vs Project Letting

SECTION B ESTIMATE OF QUANTITIES

BID ITEM NUMBER	ITEM	QUANTITY	UNIT
004E0030	Maintenance of Traffic Diversion(s)	Lump Sum	LS
004E0050	Remove Traffic Diversion(s)	Lump Sum	LS
009E0010	Mobilization	Lump Sum	LS
009E3220	Reestablish Right-of-Way and Property Corner	39	Each
009E3225	Reestablish Public Land Survey System Corner	15	Each
009E3230	Grade Staking	6.716	Mile
009E3245	Final Cross Section Survey	6.716	Mile
009E3250	Miscellaneous Staking	6.716	Mile
009E3280	Slope Staking	6.716	Mile
009E3290	Structure Staking	2	Each
009E3301	Engineer Directed Surveying/Staking	40.0	Hour
100E0100	Clearing	Lump Sum	LS
110E0600	Remove Fence	34,732	Ft
110E0730	Remove Beam Guardrail	944.0	Ft
110E1010	Remove Asphalt Concrete Pavement	10,005.3	SqYd
110E7510	Remove Pipe End Section for Reset	8	Each
120E0010	Unclassified Excavation	228,346	CuYd
120E0500	Option Borrow Excavation	88,895	CuYd
120E1000	Muck Excavation	7,688	CuYd
120E2000	Undercutting	69,378	CuYd
120E6100	Water for Embankment	2,345.8	MGal
250E0020	Incidental Work, Grading	Lump Sum	LS
260E6010	Granular Material	132.0	Ton
270E0020	Salvage and Stockpile Asphalt Mix Material	2,823.3	Ton
270E0040	Salvage and Stockpile Asphalt Mix and Granular Base Material	11,495.4	Ton
421E0100	Pipe Culvert Undercut	70	CuYd
450E0122	18" RCP Class 2, Furnish	20	Ft
450E0130	18" RCP, Install	20	Ft
450E0142	24" RCP Class 2, Furnish	128	Ft
450E0150	24" RCP, Install	128	Ft
450E0162	30" RCP Class 2, Furnish	40	Ft
450E0170	30" RCP, Install	40	Ft
450E0182	36" RCP Class 2, Furnish	50	Ft
450E0190	36" RCP, Install	50	Ft
450E2200	24" RCP Sloped End, Furnish	10	Each
450E2201	24" RCP Sloped End, Install	10	Each
450E2204	30" RCP Sloped End, Furnish	2	Each
450E2205	30" RCP Sloped End, Install	2	Each
450E2304	18" RCP Safety End, Furnish	2	Each
450E2307	18" RCP Safety End, Install	2	Each
450E3032	36" RCP Arch Class 2, Furnish	156	Ft
450E3040	36" RCP Arch, Install	156	Ft
450E4512	36" RCP Arch Flared End, Furnish	4	Each

BID ITEM NUMBER	ITEM	QUANTITY	UNIT
450E4513	36" RCP Arch Flared End, Install	4	Each
450E4759	18" CMP 16 Gauge, Furnish	1,134	Ft
450E4760	18" CMP, Install	1,134	Ft
450E4769	24" CMP 16 Gauge, Furnish	54	Ft
450E4770	24" CMP, Install	54	Ft
450E4779	30" CMP 16 Gauge, Furnish	346	Ft
450E4780	30" CMP, Install	346	Ft
450E5406	18" CMP Safety End, Furnish	36	Each
450E5407	18" CMP Safety End, Install	36	Each
450E5410	24" CMP Safety End, Furnish	2	Each
450E5411	24" CMP Safety End, Install	2	Each
450E5414	30" CMP Safety End, Furnish	14	Each
450E5417	30" CMP Safety End, Install	14	Each
450E5509	18" CMP Arch 16 Gauge, Furnish	140	Ft
450E5510	18" CMP Arch, Install	140	Ft
450E5529	30" CMP Arch 16 Gauge, Furnish	52	Ft
450E5530	30" CMP Arch, Install	52	Ft
450E5539	36" CMP Arch 16 Gauge, Furnish	132	Ft
450E5540	36" CMP Arch, Install	132	Ft
450E6006	18" CMP Arch Safety End, Furnish	4	Each
450E6007	18" CMP Arch Safety End, Install	4	Each
450E6020	36" CMP Arch Safety End, Furnish	4	Each
450E6023	36" CMP Arch Safety End, Install	4	Each
450E9001	Reset Pipe End Section	8	Each
464E0100	Controlled Density Fill	17.8	CuYd
600E0200	Type II Field Laboratory	1	Each
620E0020	Type 2 Right-of-Way Fence	33,812	Ft
620E0030	Type 3 Right-of-Way Fence	7,826	Ft
620E0040	Type 4 Right-of-Way Fence	2,726	Ft
620E0510	Type 1 Temporary Fence	16,786	Ft
620E1020	2 Post Panel	45	Each
620E1030	3 Post Panel	81	Each
700E0210	Class B Riprap	16.0	Ton
831E0110	Type B Drainage Fabric	1,396	SqYd
900E0010	Refinish Single Mailbox	1	Each
900E1150	Right of Way Marker	18	Each

STATE OF SOUTH DAKOTA	PROJECT P-PH 0034(170)350	SHEET B2	TOTAL SHEETS B58
Posting Date: 09/17/2022			

GRADING OPERATIONS

Water for Embankment is estimated at the rate of 10 gallons of water per cubic yard of Embankment minus Waste.

The estimated cubic yards of excavation and/or embankment required to construct outlet ditches, ditch blocks, and approaches are included in the earthwork balance notes on the profile sheets.

Special ditch grades and other sections of the roadway different than the typical sections will be constructed to the limits shown on the cross sections. If significant changes to the cross sections are necessary during construction, the Engineer will contact the Designer for the proposed change.

Generally, all shallow inlet and outlet ditches as noted on the plan sheets will be cut with a 10-foot wide bottom with 5:1 backslopes. However, the Engineer may direct the Contractor to adjust the ditch width for proper alignment with the drainage structure.

Temporary fence and/or permanent fence will be placed ahead of the grading operation unless otherwise directed by the Engineer.

A copy of the subsurface investigation is available at the Mitchell Region and Mitchell Area offices.

The Contractor is advised that groundwater was encountered at levels that will be near the bottom of the proposed ditch cuts at stations 109+00 and 357+00. Seasonal changes may affect the groundwater elevations. The Contractor is encouraged to review the soil borings shown in the cross sections for additional water table information.



Approval Process

For
Commission
Approval

Transportation
Commission

- Add a Project
- Delete a Project
- Changing the year of a project
- Cost Changes
- Project Improvement Change
- Project start/end change
- Administrative Errors (spelling, adding/deleting counties due to an error, etc)

DOT
Staff

Informational Revision – Transportation Commission

- Changing the year of a project
- Cost Changes
 - Increase greater than \$0.25M and 100%
 - Increase greater than \$0.5 M and 50%
 - Increase greater than \$1.0 M and 20%
- Project Improvement Change
- Project start/end change

DOT Staff:
Secretary,
Division Director,
Project Development

Administrative Changes

- Cost Changes
 - Cost decreases or cost increases below the threshold
- Administrative Errors (spelling, adding/deleting counties due to an error, etc)

DOT Staff – STIP Coordinator

Summary of Requested Changes

- Cost Changes

- Increases greater than \$0.5M and 100% (is \$0.25 M)
- Increases greater than \$1.0 M and 50% (is \$0.5 M)
- Increases greater than \$2.0 M and 20% (is \$1.0 M)