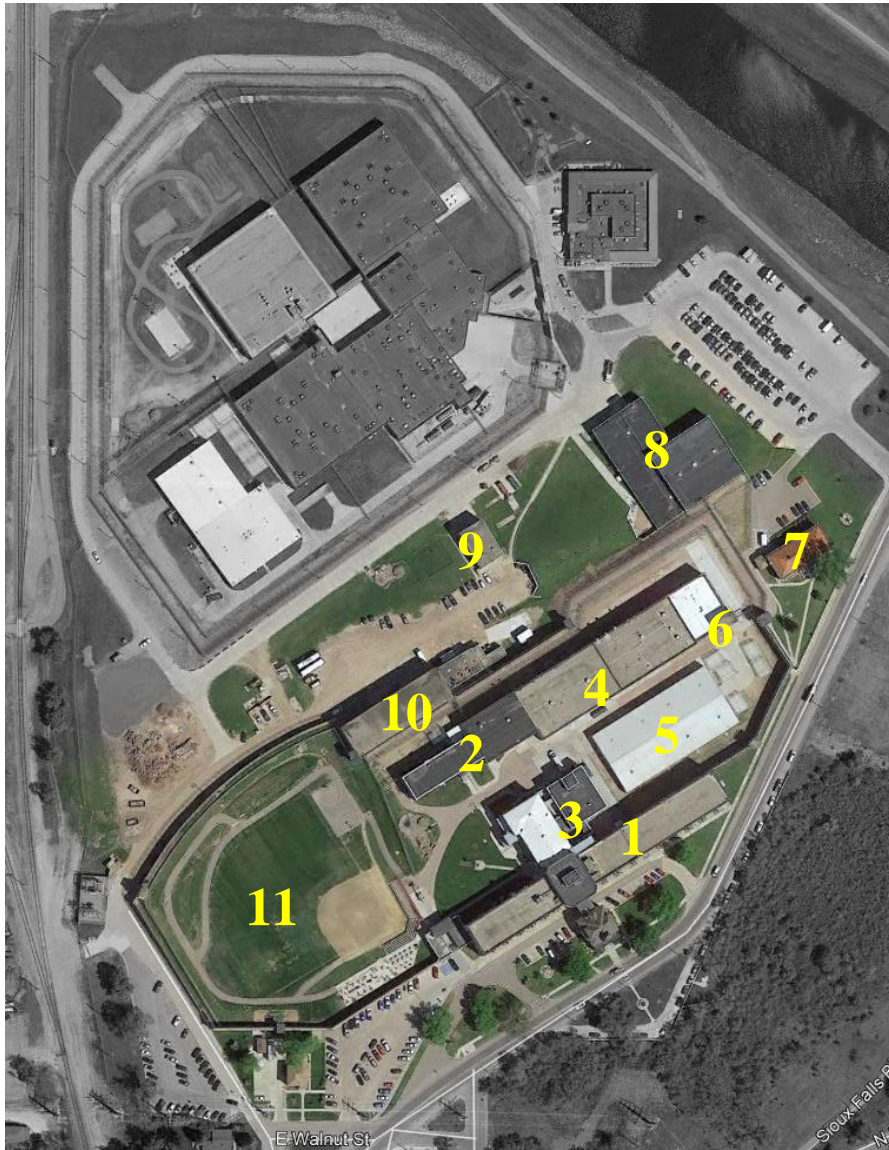


South Dakota State Penitentiary



1. **Hill Housing, Level IV Facility:** Constructed in 1881
 - a. Offender population: 772
 - b. Capacity: 426
 - c. 0 classrooms
2. **Coolidge Learning Center**
 - a. Library, 8 classrooms, 10 staff offices
 - b. Programs include CBISA, DBT, MRT, Resilience Group, GED, PreP reentry program.
3. **Dining, health services, and kitchen**
4. **Pheasantland Industries #1:** Includes license plates, sign shop, print shop, upholstery and refinishing, braille, and Hope Haven.
5. **Pheasantland Industries #2:** Includes commissary warehouse operations.
6. **Restrictive Housing:** Includes indoor recreation area
7. **Training Academy** – Basic Training academy for new recruits
8. **Rec Building** (rec & visiting area for Sioux Falls Minimum Center)
9. **Maintenance Building**
10. **Warehouse**
11. **Recreation Yard**

Staff: 104 uniformed, 28 clinical, 3 CD counselors, and 66 non-uniformed.

Jameson Prison



1. **Jameson Prison, Level V Facility:** Opened in 1993, Unit D added in 2006
 - a. Offender population: 511
 - b. Capacity: 576
 - c. 5 classrooms
 - d. Programs include sex offender treatment, CBISA, DBT, MRT, Resilience Group, GED.
 - e. Includes Jameson Medical for health care services: added in 2021.
 - f. Includes kitchen, dining, indoor/outdoor recreation, visitor area
2. **Production Building:** Future use for vocational programs with Southeast Technical School.

Staff: 104 uniformed, 39 clinical, 1 CD counselor, and 33 non-uniformed.

Sioux Falls Minimum Center

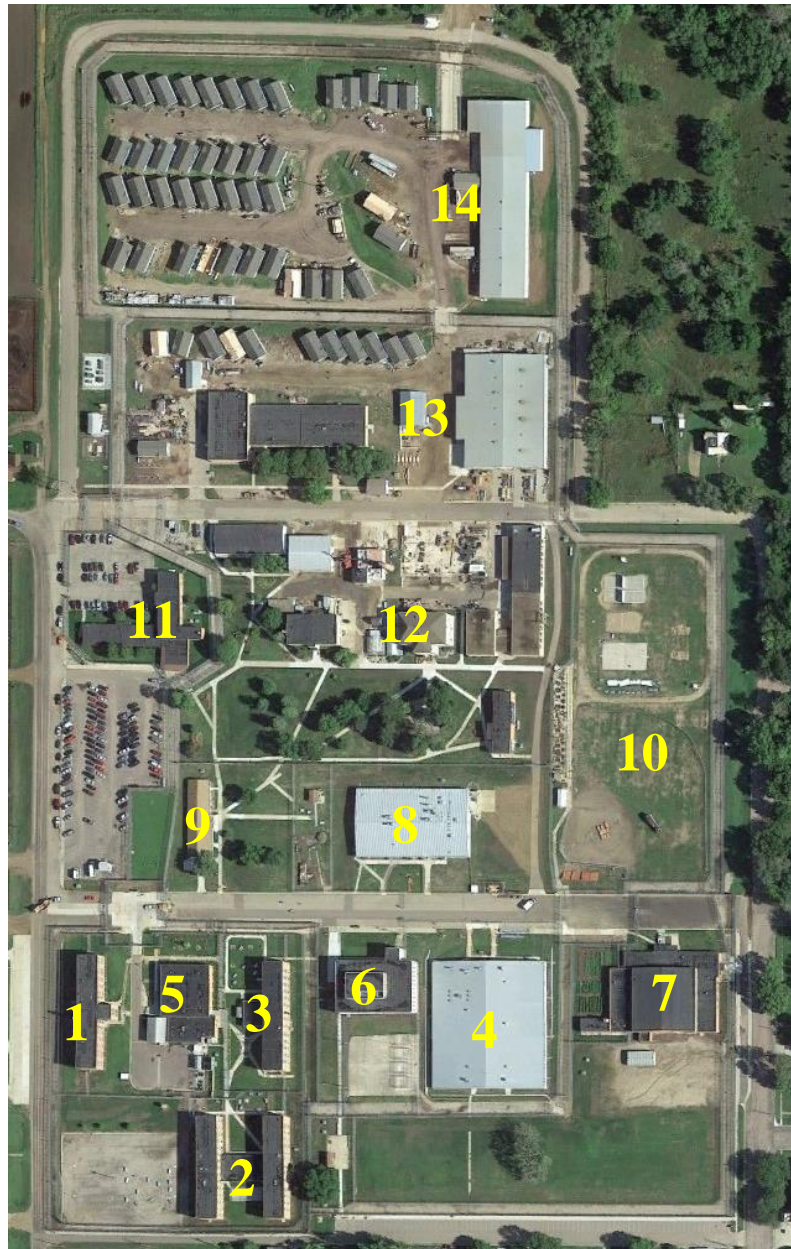


1. Sioux Falls Minimum Center, Level II Facility: Opened in 1993

- a. Offender population: 234
- b. Capacity: 80
- c. 0 classrooms
- d. Relies on shared infrastructure for food services and administration from the Jameson Prison.
- e. Uses recreation building for visits and indoor recreation
- f. Programs include sex offender treatment, MRT, Southeast Technical School welding, GED, PreP reentry program, and work release.

Staff: 12 uniformed and 1 non-uniformed.

Mike Durfee State Prison



1,2,3,4. Housing, Level III Facility: Original construction 1881, repurposed in 1984 as correctional facility.

a. Offender population: 1,230

b. Capacity: 963

5. **Montgomery Hall:** includes food services and offender property

6. **Library:** Includes library, chapel, and visitation

7. **Armory**

8. **Dining Hall:** includes laundry

9. **Health Services**

10. **Recreation Yard**

11. **Gill Hall:** Administration building

12. **Science Hall:** Includes 8 classrooms (3 are for substance use disorder).

a. Programs include sex offender treatment, CBISA, DBT, MRT, Resilience Group, GED, PreP reentry program.

13. **Springfield Vocational Industries/Pheasantland Industries Buildings:** Includes 9 classrooms.

a. Includes welding, auto body, auto mechanics, horticulture, upholstery, construction, carpentry, and wood shop

14. **South Dakota Housing Development Authority Program:** Governor's House Project

Staff: 124 uniformed, 26 clinical, 5 CD counselors, 31 non-uniformed.

Yankton Minimum Center



1. **Yankton Minimum Center, Level II Facility:** Constructed in 1938, repurposed in early 1970's as correctional facility.
 - a. Offender population: 139 (reduced due to construction project)
 - b. Capacity: 192
 - c. 3 classrooms (2 are for substance use disorder)
 - d. Programs include CBISA, DB, MRT, Resilience Group, GED, PreP reentry program, and work release.

Staff: 28 uniformed and 7 non-uniformed.

South Dakota Women's Prison



1. **South Dakota Women's Prison, Level V Facility:** Opened in 1995
 - a. Offender population: 310
 - b. Capacity: 202
 - c. Includes kitchen, dining, library, 6 classrooms, health services, and mental health services.
 - d. Programs include sex offender treatment, CBISA, MRT, GED, parenting, Moving On, and WORD.
2. **Mother/Baby Unit**
3. **Housing Unit (Unit E):** Added in 1999.
 - a. 0 classrooms
4. **Administration**
5. **Pierre Minimum Center, Level II Facility:** Repurposed as correctional facility in 1993.
 - a. Offender population: 213
 - b. Capacity: 120
 - c. 4 classrooms – overflow housing beds
 - d. Programs include sex offender treatment, CBISA, MRT, GED, parenting, Moving On, WORD, and work release.
 - e. Pheasantland Industries- Embroidery shop
6. **Training Academy:**
 - a. Includes dog program and Basic Training Academy for new recruits
 - b. 5 classrooms
7. **Maintenance**

Staffing: 71 uniformed, 15 clinical, and 18 non-uniformed.

Rapid City Minimum Center



1. **Rapid City Minimum Center, Level II Facility:** Commercial warehouse repurposed/retrofitted as correctional facility in 2010.
 - a. Offender population: 393
 - b. Capacity: 216
 - c. 2 classrooms
 - d. Programs include CBISA, DBT, MRT, Resilience Group, GED, PreP reentry program and work release.

Staffing: 30 uniformed, 15 clinical, 2 CD counselors, and 7 non-uniformed.