



SOUTH DAKOTA DEPARTMENT OF CORRECTIONS

Corrections Commission Lockdown Update



November 19, 2024

State Penitentiary Lockdown

- Lockdown began on September 15, 2024.
- Proactive security measure to implement a full campus search & seizure for dangerous contraband.
- Was NOT a response to an assault, fight, or disturbance.
- Phone service was managed and disabled as needed during the lockdown.
- Lockdown ended on October 2, 2024.



Contraband

- Any article, item, or thing that poses or may pose a threat to the security of a SDDOC facility or office.
- This can range from a device, instrument, material, or substance which is readily capable of causing or inducing fear of death or bodily injury to illicit substances such as controlled substances and alcohol.
- Although some of the items retrieved are tools used in the facility, if they are not stored or used for their intended purposes, they become contraband, and in some instances, dangerous contraband.



Contraband

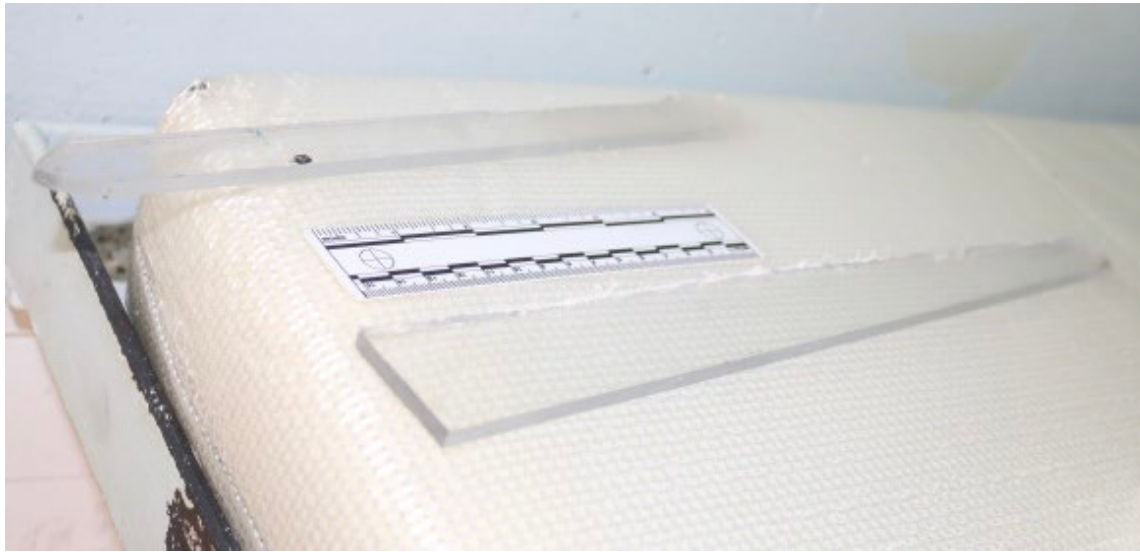
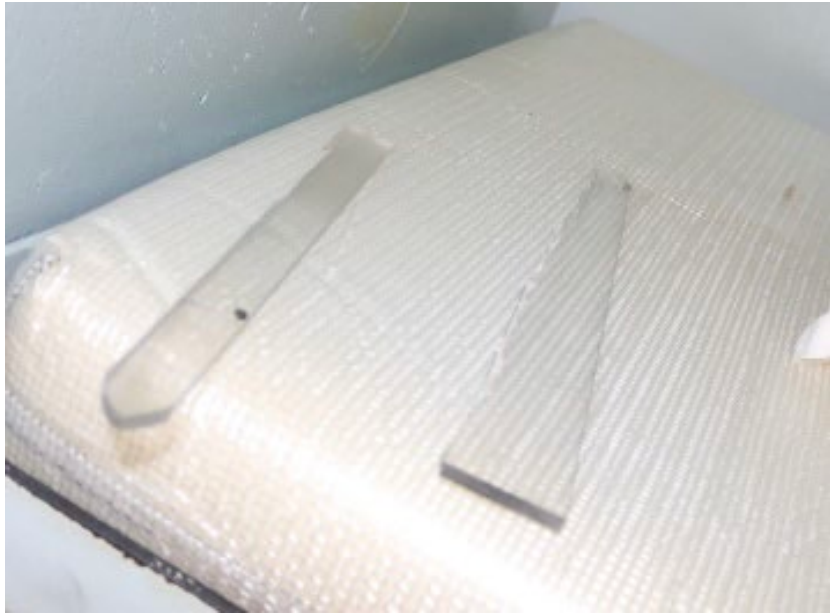
- Items found during the lockdown included handmade weapons, other items that can be fashioned into or used as weapons, illicit substances, unauthorized electronic equipment, and excess property.
- Offenders are accountable for contraband found on or within their person, personal property, assigned work area, and living areas.
- Offenders who introduce these items into a DOC facility will be held accountable under the appropriate provisions of the DOC and the codified laws of this state.



















SOUTH DAKOTA DEPARTMENT OF CORRECTIONS



Thank you!