



AGENDA

Game, Fish and Parks Commission

May 5-6, 2022
Custer State Park – Event Barn
US HWY 16A, Custer, SD

This meeting will be held in person, via zoom/conference call, and livestream. To listen to the entire meeting beginning at 1:00 p.m. via livestream at <https://www.sd.net/remote1/> or join via zoom by clicking on the link below. Depending on the application you use you may be required to enter the meeting ID and password. Remember to **enter your display name and mute your microphone**. To help keep background noise and distractions to a minimum, make sure you **mute your microphone and turn off your video** when you are not speaking.

THURSDAY – Regular Meeting

Zoom Meeting Link <https://state-sd.zoom.us/j/99107315069?pwd=Yi9OZlJlUdSsxMk12SIB3ZXVsUjJFUT09>

or join via conference call Dial 1 669 900 9128 Meeting ID: 991 0731 5069 Passcode: 948529

FRIDAY – Regular Meeting

Zoom Meeting Link <https://state-sd.zoom.us/j/94656700606?pwd=bFB6Yk0xWGN5Z2tYUjFyVFZkeUNSZz09>

or join via conference call Dial 1 669 900 9128 Meeting ID: 946 5670 0606 Passcode: 002001

Public Input: To provide comments join the meeting in person, via zoom or conference call per the info above. To conduct the public hearing and/or open forum as efficiently as possible we ask those wishing to testify to **register by 1:00 pm the day of the meeting by email to Rachel.comes@state.sd.us**. Testifiers should provide their full names, whom they are representing, city of residence, and which proposed topic they will be addressing.

Written comments can be submitted at <https://gfp.sd.gov/forms/positions/>. To be included in the public record comments must include full name and city of residence and meet the **submission deadline of seventy-two hours before the meeting (not including the day of the meeting)**

Call to order 1:00 PM MT/ 2:00 PM CT

Division of Administration

Action Items:

1. Conflict of Interest Disclosure
2. Approve Minutes of the April 2022 Meeting
<https://gfp.sd.gov/commission/archives/>
3. Additional Commissioner Salary Days
4. License List Request

Information Items:

5. Budget Update
6. Parks and Wildlife Foundation Update
7. Sportsman Against Hunger Update
8. Go Outdoors SD Update
9. Bounty Program Update

Public Hearing 2:00 PM

Portion of the meeting designated for public comment on items pertaining to finalizations listed on the agenda (Typically limited to 3 minutes per person.)

Open Forum

Portion of the meeting designated for public comment on other items of interest. *(Typically limited to 3 minutes per person)*

Finalizations

10. Application for License
11. License Forms and Fees
12. Waterfowl Seasons
13. Public Waters – Indian Springs

Proposals

14. Antelope (Firearm & Archery)
15. Archery and Muzzleloader Season
16. CWD Regulations
17. Fall Turkey
18. Sage Grouse
19. Mourning Dove
20. CSP Bison Hunt
21. Mentor Turkey Recruitment (April proposal)

Division of Parks and Recreation

Information Items:

22. Sylvan Lake Store Replacement
23. Sylvan Lake Fire Update
24. Bison Center Update & Grand Opening
25. ADA Assessment
26. Camping, Visitation and Revenue Report

Division of Wildlife

Information Items:

27. Fish Spawning and Stocking Update
28. French Creek Cooling Project
29. AIS Program Update
30. 2021 Pheasant Harvest
31. GFP/Pheasants Forever Cooperative Position – Hunter Recruitment
32. License Sales Update

Executive Session

Solicitation of Agenda Items from Commissioners

Adjourn

Next meeting information: June 2-3, 2022 - Aberdeen, SD

**Minutes of the Game, Fish, and Parks Commission
April 7-8, 2022**

Chairman Russell Olson called the meeting to order at 1:00 p.m. CT. Commissioners Travis Bies, Julie Bartling, Jon Locken, Stephanie Rissler, Doug Sharp, Charles Spring, Robert Whitmyre were present. Public and staff were able to listen via SDPB livestream and participate via video conference or in person with approximately 80 total participants via zoom and in person.

DIVISION OF ADMINISTRATION

Conflict of Interest Disclosure

Chairman Olson called for conflicts of interest to be disclosed. None were presented.

Approval of Minutes

Olson called for any additions or corrections to the March 3-4, 2022, regular meeting minutes.

Motion by Rissler with second by Sharp TO APPROVE THE MINUTES OF THE MARCH 3-4, 2022, REGULAR MEETING MINUTES. Motion carried unanimously.

Additional Commissioner Salary Days

Olson called for additional salary days. None were requested.

Second Century Habitat Fund Update

Brian Bashore, executive director of the Second Century Habitat Fund board provided a brief update on current initiatives.

Go Outdoors SD Update

Ross Scott, wildlife staff specialist and Keith Fisk, program manager provided an update on Go Outdoors South Dakota.

Recruitment/Marketing Efforts & Park Events

April Larson, Marketing Coordinator, updated the Commission on current parks marketing efforts and events.

PUBLIC HEARING

The Public Hearing began at 2:00 p.m. and concluded at 2:15 p.m. The minutes follow these Commission meeting minutes.

OPEN FORUM

Jon Kotilnek, senior staff attorney, opened the floor for discussion from those in attendance on matters of importance to them that may not be on the agenda.

Rob Roeber – Redfield, SD – voiced concerns and made request to close property to the west as well as some additional space to allow for disabled veterans to fish Cottonwood Lake on HWY 37 on the SE side.

Chuck Dieter – Brookings, SD – inquired about NR hunting in southeast SD. If it's not broke, why are we trying to fix it. This will just replace residents with nonresidents and

doesn't think this is part of the management plan. Also, spoke about waterfowl outfitters in SD and having the commission provide some regulations. Noted SD is one of the few states that doesn't regulate guides.

Nathan Mueller – Watertown, SD & Steve Mohagrant, Milbank, SD – has applied for several years, but has difficulty reeling in a fish with loss of limb. Inquiring if it is okay to snag your own fish and have another license holder assist with reeling it in.

Julie Anderson – Rapid City, SD – spoke in opposition to the proposed shooting range on Elk Vale Road. Expressed concerns to the environment from lead at outdoor shooting ranges.

Will Stone – Gary, SD – spoke regarding the annual shooting preserve license fee requesting it be lowered.

George Vandel – Pierre, SD – concerned with adding residents to Southwest counties. If a NR takes the place of a R hunter this reduces the ability to reduce the population.

Nancy Hilding – Black Hawk, SD – Introduced SB85 for a pipeline noted how beneficial beaver are to the environment. They raise the water table and the whole surface of land becomes a surface water storage area creating terrestrial and aquatic habitat. Spoke in support of a moratorium on beavers. Said people wanted 12 months instead of 6 months as it would be easier to trap beaver.

PETITION

Apprentice and Mentored Deer Season Start Date

Tom Kirschenmann, wildlife division director, presented the petition received from Justin Allen to change the apprentice deer dates to begin in September. Allen explained his reason as Today's youth and potential new hunters have many distractions and obstacles preventing them from getting into hunting and the outdoors. Making youth and new hunters first hunting experiences a pleasant and overall positive experience will keep them coming back for a lifetime. Opening the apprentice and mentored deer season September 1 every year will provide additional time (1-2 additional weeks) for these hunting opportunities to young and new hunters during a period of the season where weather is conducive to a quality hunting experience. These additional days would allow these hunters more time afield to pursue deer before other seasons such as grouse, pheasants, waterfowl, other deer season, etc. may affect the quality/success of their hunt and also tie up the availability of parents/family/friends/mentors who accompany these youth and new hunters. This change to the season would be a benefit to young hunters and aligns with the SD GFP departments "R3" Recruitment, Retention, Reactivation Criteria guidelines. This change should help continue to recruit, retain, and introduce young and new hunters to the great outdoors of South Dakota.

Kirschenmann explained that changes and adjustments create complexity and as for an idea to continue recruitment, not sure that its necessary to move the recruitment needle.

Motion by Bies, second by Sharp to deny the petition. Motion carried unanimously.

Motion by Rissler, second by Whitmyre to adopt resolution 22-08 (APPENDIX C) denying the petition. Motion carried unanimously.

FINALIZATIONS

Elk Seasons

Custer State Park Early Archery Elk

1. Adjust the total number of available licenses from 3 "any elk" to no more than 10 "any elk" licenses.

Switzer explained the recommended maximum number of elk licenses will be established in administrative rule and the GFP Commission via administrative action will determine specific number of licenses by tag types and allocation amongst hunting units. Updated population objectives and any recommended license adjustments will be shared at the March Commission meeting once preliminary harvest estimates have been obtained and population modeling exercises have been completed.

Motioned by Rissler, second by Whitmyre TO FINALIZE THE CHANGES TO THE CUSTER STATE PARK ARCHERY ELK SEASON. Motion carried unanimously.

Custer State Park Elk

1. Adjust the total number of available licenses from 9 "any elk" licenses to no more than 15 "any elk" licenses.
2. Administrative rule clean-up for season dates.

Switzer explained the recommended maximum number of elk licenses will be established in administrative rule and the GFP Commission via administrative action will determine specific number of licenses by tag types and allocation amongst hunting units. Updated population objectives and any recommended license adjustments will be shared at the March Commission meeting once preliminary harvest estimates have been obtained and population modeling exercises have been completed. Of the nine any elk licenses issued for Custer State Park, eight will be valid specifically for Custer State Park and the ninth any elk license will be made available to a non-governmental organization as a raffle license that is valid in Custer State Park and any Black Hills elk hunting unit in which an any elk license is issued.

Motioned by Whitmyre, second by Rissler TO FINALIZE THE CHANGES TO THE CUSTER STATE PARK ELK SEASON. Motion carried unanimously.

Archery Elk Hunting Season

1. Adjust the number of licenses available from 142 "any elk" and 80 "antlerless elk" licenses (total of 222 licenses) to no more than 200 "any elk" and 100 "antlerless elk" licenses (total of 300 licenses).

Switzer explained the recommended maximum number of elk licenses will be established in administrative rule and the GFP Commission via administrative action will determine specific number of licenses by tag types and allocation amongst hunting units. Updated population objectives and any recommended license adjustments will be shared at the March Commission meeting once preliminary harvest estimates have been obtained and population modeling exercises have been completed.

Motioned by Sharp, second by Rissler TO FINALIZE THE CHANGES TO THE ARCHERY ELK SEASON. Motion carried unanimously.

Black Hills Elk Hunting Season

Chad Switzer, wildlife program administrator, presented the recommended changes to the elk seasons.

Black Hills Elk

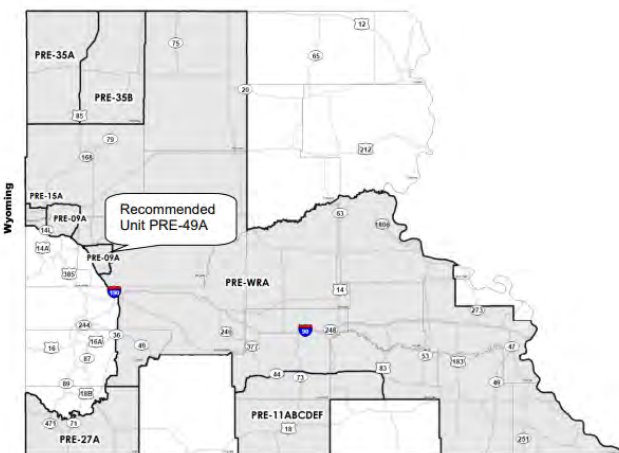
1. Adjust the total number of available licenses from 425 "any elk" and 700 "antlerless elk" licenses (total of 1,125 licenses) to no more than 500 "any elk" and 1,000 "antlerless elk" licenses (total of 1,500 licenses).
2. Modify the boundaries of BHE-H9A and BHE-H9B to correct unit boundary.

He explained the recommended maximum number of elk licenses will be established in administrative rule and the GFP Commission via administrative action will determine specific number of licenses by tag types and allocation amongst hunting units. Updated population objectives and any recommended license adjustments will be shared at the March Commission meeting once preliminary harvest estimates have been obtained and population modeling exercises have been completed. There is currently a small geographic area that technically does not reside in any elk hunting unit; this unit boundary modification will correct this oversight.

Motioned by Rissler, second by Whitmyre TO FINALIZE THE CHANGES TO THE BLACK HILLS ELK SEASON. Motion carried unanimously.

Prairie Elk

1. Adjust the number of licenses available from 78 "any elk" and 178 "antlerless elk" licenses (total of 256 licenses) to no more than 100 "any elk" and 300 "antlerless elk" licenses (total of 400 licenses).
2. Modify Unit PRE-9A (see map).
3. Establish a new unit (PRE-49A) to include a portion of Meade County and season dates (see map).
4. Correct season dates in administrative rule for units PRE-11B, PRE-11C, PRE-11D, PRE-35A, and PRE-35B.



Switzer explained the recommended maximum number of elk licenses will be established in administrative rule and the GFP Commission via administrative action will determine specific number of licenses by tag types and allocation amongst hunting units. Updated population objectives and any recommended license adjustments will be

shared at the March Commission meeting once preliminary harvest estimates have been obtained and population modeling exercises have been completed. The recommended changes to prairie elk hunting unit boundaries and season date changes are to improve elk management on private land and simplify season dates.

Motion by Whitmyre with second by Sharp TO FINALIZE THE RECOMMENDED CHANGES TO THE PRAIRIE ELK SEASON. Motion carried unanimously.

Elk License Allocation

Switzer presented the administrative action to allocate licenses for the 2022-2023 elk hunting seasons.

2021				2022-2023			
Black Hills Elk				Black Hills Elk			
Unit	Resident Licenses			Unit	Resident Licenses		
	Any Elk	Atl Elk			Any Elk	Atl Elk	
	21	23			21	23	
H1A	50			H1A	60		
H1B		15		H1B		65	
H2A	240			H2A	290		
H2B		25		H2B		50	
H2C				H2C		50	
H2D				H2D			
H2E		50		H2E		40	
H2F				H2F		40	
H2G				H2G		40	
H2H		5		H2H		10	
H2I		15		H2I		10	
H2J		15		H2J		10	
H3A	100			H3A	120		
H3B		30		H3B		45	
H3C		30		H3C		45	
H3D		30		H3D		45	
H3E		60		H3E		60	
H3F		60		H3F		60	
H3G		60		H3G		60	
H4A	20			H4A	20		
H4B		40		H4B		40	
H5A	5			H5A	5		
H7A	20			H7A	25		
H7B		15		H7B		20	
H9A	15			H9A	15		
H9B		40		H9B		40	
TOTAL	450	490	940	TOTAL	535	730	1,265
Contingency	NA	98	98	Contingency	NA	146	146
Archery Elk				Archery Elk			
Unit	Resident Licenses			Unit	Resident Licenses		
	Any Elk	Atl Elk			Any Elk	Atl Elk	
	21	23			21	23	
H1A	20	10		H1A	30	20	
H2A	80	40		H2A	100	40	
H3A	35	20		H3A	40	30	
H4A				H4A			
H5A	2			H5A	2		

H7A	10			H7A	10		
H9A				H9A			
TOTAL	147	70	217	TOTAL	182	90	272

2021				2022-2023			
Prairie Elk				Prairie Elk			
Unit	Resident Licenses			Unit	Resident Licenses		
	Any Elk	Atl Elk			Any Elk	Atl Elk	
	21	23			21	23	
9A	10	15		9A	4		
11A		18		11A		5	
11B	16			11B	16		
11C	16			11C	16		
11D		30		11D		30	
11E		30		11E		10	
11F		30		11F			
15A	8			15A	8		
15B		5		15B		5	
27A	10	10		27A	20	20	
35A	4	8		35A	10		
35B	4	12		35B	8		
35C				35C		15	
35D				35D		15	
35E				35E		20	
35F				35F		20	
49A				49A	10	15	
WRA	10	20		WRA	10	20	
TOTAL	78	178	256	TOTAL	102	175	277
Custer State Park				Custer State Park			
Season	Resident Licenses			Season	Resident Licenses		
	Any Elk	Atl Elk			Any Elk	Atl Elk	
	21	23			21	23	
CEE-CU1	3			CEE-CU1	4		
CUE-CU1	9			CUE-CU1	12		
TOTAL	12		12	TOTAL	16		16

Motioned by Rissler, second by Whitmyre TO FINALIZE THE ADMINSTRATIVE ACTION ALLOCATING ELK LICENSES BY SEASONS AND UNITS. Motion carried unanimously.

Missouri River (Pierre) Waterfowl Refuge

Kirschenmann presented the recommended change to withdraw proposal and retain current refuge boundary. He explained the Commission denied a petition submitted by the South Dakota Migratory and Upland Gamebird Association as a component of the petition was to include a 50-year clause. The Commission, however, did develop a proposal that includes the addition to the Oahe Dam State Waterfowl Refuge as requested by the petitioner and believes the requested additions to the Oahe Dam State Waterfowl Refuge deserve an opportunity for public comment. It is unknown if the proposed refuge change will enhance waterfowl hunting opportunities in the Pierre/Ft. Pierre area at a level greater than the current public hunting opportunities that would be taken away. In addition, the total area in the proposed refuge expansion and removal of public access for waterfowl hunting opportunities is 14,768 acres; a 444% increase in size that includes 11,704 acres of water and 3,064 acres of land. The

proposed refuge expansion would remove shoreline hunting that includes 24.2 miles upstream and 24.5 miles downstream of Oahe Dam.

Motion by Whitmyre, second by Bartling TO REJECT THE PROPOSAL. Motion carried unanimously.

Bighorn Sheep

Switzer presented the recommended changes to the bighorn sheep hunting season.

1. Increase the number of “ram bighorn sheep” licenses from 8 to 11.
2. Change the mandatory orientation meeting from “preceding the opening day of the season” to “preceding the first day of hunting by the license holder”.

He explained that due to the recent *M. ovi* pneumonia outbreak in Unit 3, both the Department and Badlands National Park recommend issuing no licenses in this unit. Based on the strong numbers of ram bighorn sheep across all age classes, the increase to the number of licenses being recommended in Custer State Park will not negatively affect the viewability of bighorn sheep for park visitors and will provide additional hunting opportunities. Modifying the requirement for the mandatory hunter orientation will provide better customer service to those licensed hunters. In addition to the licenses allocated by units above, the Department recommends the auction license to be valid in Units 2, 4, and Custer State Park.

Motion by Sharp with second by Spring TO FINALIZE THE RECOMMENDED CHANGES TO THE BIGHORN SHEEP SEASON. Motion carried unanimously.

Lake Francis Case Walleye Regulations

Jake Davis, Fisheries Program Administrator, presented recommended changes to fishing season rules to remove the special regulations on Lake Francis Case from the northern Gregory-Charles Mix County line downstream to Fort Randall Dam which require that anglers cannot release back to the water walleye that are caught through the ice and that length limits do not apply when fishing through the ice. These changes would standardize fishing regulations on Lake Francis Case and Lake Sharpe. He explained current walleye regulations for the lower portion of Lake Francis Case, while fishing through the ice, include:

1. The first four walleyes caught must be kept
2. The 15-inch minimum length limit does not apply

A proposal was made by the commission at their January 2022 meeting, in response to a petition, that would remove the requirement that the first four walleyes caught be kept, while fishing through the ice in the lower portion of Lake Francis Case. The proposal, with the department recommended changes, would remove the existing walleye harvest restriction requiring anglers to not release any walleye caught while fishing through the ice in the lower portion of Lake Francis Case. It would also remove the exemption to the 15-inch minimum length limit in effect when fishing through the ice in this portion of the reservoir, meaning the 15-inch minimum length limit would be in effect for all areas of Lake Francis Case from September 1 through June 30. Specific regulations for walleye harvest when fishing through the ice on the lower end of Lake Francis Case were enacted in 2001 in response to public concern over high mortality of walleye caught from deep water and then released. The intent of the regulations was to reduce post-release mortalities by prohibiting release of walleye and limiting the number

of walleyes caught during a fishing trip. There is evidence to support the idea that post-release mortality increases at deeper depths. The special walleye harvest regulations for the lower portion of Lake Francis Case, when fishing through the ice, is the only case in the state where a regulation specifically requiring fish to be harvested exists because of potential post-release mortality. However, the same issue occurs at other locations during various times of the year, including in the lower portion of Lake Francis Case during the summer.

Motioned by Locken, second by Spring TO FINALIZE THE RECOMMENDED CHANGE AS PRESENTED. Roll Call Vote: Bartling – No, Bies – Yes, Locken – Yes, , Rissler – Yes, Sharp – Yes, Spring – Yes, Whitmyre – Yes, Olson – Yes. Motion passed 7-1

Public Waters

Jacquie Ermer, wildlife regional supervisor and Al Nedved, parks assistant director, presented the recommended change to remove no boating zones and allow for non-motorized watercraft within the Waubay National Wildlife Refuge and the Waubay State Game Bird Refuge, establish a no wake zone at a new boat ramp at Lake Poinsett State Recreation Area in Brookings County, modify the no wake zone at the Belle Fourche Reservoir in Butte County to include all boat ramps. The noted change from the original proposal was to modify the use of existing safety zone definitions currently in rule.

Motioned by Sharp, second by Whitmyre TO FINALIZE THE MODIFICATION TO THE PROPOSAL AS PRESENTED. Motion carried unanimously.

License Agent Processes

Keith Fisk, program manager, presented the recommended change to modify two administrative rules to align new business practices with GFP's new licensing system and requirements. To adjust electronic ACH transfers, processes, and timeframe for payments and remove the use of Emergency Authorization books. He explained GFP will be launching the new licensing system on December 15, 2021. Once this occurs, license agents will be required to work within new business practices (i.e. electronic ACH transfers and different timeframes when the electronic money sweeps occur) to continue to be a license agent for GFP. License agents serve an important role for selling licenses on behalf of GFP as well as providing hunters with the ability to purchase hunting and fishing licenses outside normal business hours that GFP offices are open. As technology advances, the ability to sell paper hunting and fishing licenses is no longer needed. Customers will be able to purchase licenses online (through GFP's licensing website) or by visiting a license agent or by calling GFP's call center.

Motion by Rissler, second by Bartling TO FINALIZE THE RECOMMENDED CHANGES TO LICENSING SYSTEM. Motion carried unanimously.

Cancellation Policy

Scott Simpson, division director, presented the recommended changes to allow for cancellation of campsites and lodging facilities without fee for a period of time after a reservation is made. After that period has elapsed, a fee of one-half of the first night's camping or lodging fees will be assessed for both types of overnight use. This rule proposal helps simplify cancellation policies and associated fees by providing one

cancellation procedure for campsites, and one for lodging facilities and Custer State Park French Creek Horse Camp. Simpson further explained The Department's cancellation policy was developed at a time of lower demand for camping and lodging facilities, and the ability to resell those facilities was more difficult. The current procedure is to assess a cancellation fee of one-night's camping or \$25 for cabins/lodges effective immediately after the reservation is made. With the increased demand for camping and lodging facilities, the ability to fill those vacancies left by cancellations is much more likely. This change will also help the Department be more consistent with industry cancellation standards and allow more flexibility of users to cancel a reservation without penalty due to unforeseen circumstances.

Motioned by Rissler, second by Bies TO FINALIZE THE CHANGES TO THE CAMPING RESERVATION FEES. Motion carried unanimously.

PROPOSALS

Public Waters – Indian Springs

Jacque Ermer, wildlife regional supervisor, presented the recommended change to

1. Modify applicable dates and the area included in "no discharge of a firearm from a boat" of Indian Springs and Antelope Lakes in Clark County.
2. Modify applicable dates and the area included in the closure of fishing from a boat of Indian Springs and Antelope Lakes in Clark County.

She explained that in 2017, HB1001 tasked the SD Game Fish and Parks to work on agreements with landowners on nonmeandered water issues. One such agreement was with a landowner on Indian Springs Lake in Clark County. The current rule was put into place in 2018 after discussions with a landowner who owned most of the flooded private property in the Indian Springs basin. It was the opportunity to balance the request of the landowner and the public recreational use of Indian Springs Lake. Landownership has changed hands since the original agreement. Due to water levels increasing in the area, the new landowner has requested to simplify the boundaries of the current area closed to "discharging a firearm or fishing from a boat" on Indian Springs to also include the waters of Antelope Lake. Antelope Lake is currently designated as a State Waterfowl Refuge. As part of this request, the landowner also agreed to change the start date in the current rules 41:04:02:12b and 14:07:02:01b to October 20th, giving sportsmen and women an additional 10 days in the fall to hunt and fish from a boat while allowing the water to be open to public recreational use during the winter, spring, and summer months. This date would also align with boating regulations on other state refuges. Indian Springs Lake is a non-meandered body of water thus is subject to landowner request to close it to recreational use if so desires. By GFP staff working with the current landowners, Indian Springs Lake can remain open to public recreational activities with minimal restrictions for 2 months vs being shut down year-round.

Waterfowl Seasons

Youth Waterfowl Hunting Season

Chad Switzer, Wildlife Administrator, presented no recommended changes to the youth waterfowl season.

Duck Hunting Season

Switzer presented the recommended changes to the duck hunting season as follows:

1. Remove daily bag limit of 5 mergansers (including 2 hooded mergansers) and include all mergansers in the normal duck daily bag limit.
2. Remove the possession limit of mergansers and include all mergansers in the normal duck possession limit.
3. Remove the ability to transfer certain nonresident licenses after a specific date.

He explained these recommended changes cleans up administrative rules for the implementation of the experimental options available to duck hunters. The allowance to transfer certain nonresident licenses after a specific date is unnecessarily complex and creates difficulties with the administration of licenses as well as creates confusion with hunters.

Early Fall Canada Goose

Switzer presented the recommended change to remove restriction for nonresident hunters in the counties of Beadle, Brookings, Hanson, Kingsbury, Lake, Lincoln, McCook, Miner, Moody, Sanborn, Turner, Union, and Minnehaha counties.

Goose Hunting Season, August Management Take and Special Canada Goose Hunting season.

Switzer presented no recommended changes to the goose hunting season.

Common Snipe

Switzer presented no recommended changes to the snipe season.

Tundra Swan Hunting Season

Switzer presented no recommended changes to the tundra swan season.

Sandhill Crane

Switzer presented no recommended changes to the sandhill crane.

Waterfowl Hunting Season

Switzer presented no recommended changes to the waterfowl hunting season.

License Forms and Fees

Switzer presented the recommended change to remove the inclusion of the state migratory bird certification permit with the nonresident spring snow goose, nonresident early fall Canada goose licenses, nonresident 3-day licenses, nonresident youth waterfowl licenses and decrease applicable license fees by \$5 each. He explained that currently, several nonresident waterfowl licenses include the migratory bird certification permit. With the 2-tiered duck license option, applicants must select a migratory bird certification permit to reflect their choice of the traditional or 3-duck license option and pay the \$5 fee for the applicable migratory bird certification permit.

Application for License

Switzer presented the recommended changes to the license application as follows:

1. Remove the requirement for unlimited access permits for archery, muzzleloader, mentor, youth, and apprentice deer license holders to hunt certain deer hunting units and public lands.
2. Limit the number of archery access permits for Unit WRD-27L to no more than 20 "any deer" access permits for residents and no more than 5 "any deer" access permits for nonresidents.

He explained research on R3 efforts (i.e., Recruitment, Reactivation, Retention) has identified rule/regulation complexity to be one of several obstacles for new sportsmen and women. The removal of these access permits will greatly simplify hunting regulations regarding mentor, archery, muzzleloader, youth, and apprentice deer license holders while having no impact to deer management in these areas. The number of access permits currently available, across all these seasons, has created unnecessary complexity for sportsmen and women as well as the administration of these access permits in the licensing system. Unlimited access permits were established with the intent to evaluate harvest and participation on specific management areas by deer hunters with statewide or region-wide (e.g., West River Archery Deer) license types including archery, muzzleloader, mentor, youth, and apprentice license types. Deer harvest and participation was evaluated on all areas that required an access permit in 2019 and results were presented to the Commission. As a result, the Commission took action to limit archery deer access permits to 500 residents and 125 nonresidents on management unit 35L and no other unlimited license types or access permit areas were limited. Since 2019, no changes have been made to the number of access permits available for archery deer hunters in management unit 35L and no further changes have been made to the unlimited access permit areas. Through the 2021 deer hunting season, hunting effort and harvest success by access permit users has been collected, providing sufficient baseline information regarding use on these areas. Harvest and success by hunters with statewide or region-wide license types will continue to be estimated at the firearm deer management unit level. In the event there is a desire to consider limiting access permits on additional areas and user groups, harvest and success data will be used to evaluate use by user groups on these areas beginning the 2022 deer hunting season. This change will simplify deer hunting regulations for statewide and region-wide deer license type user groups and reduce complexity of the deer licensing system. Limited access units (LAUs) are intended to reduce hunter densities and provide a quality hunt experience. Trend data of supports limiting the number of resident and nonresident archery access permits for Unit WRD-27L to help meet its LAU objective. In addition, a reduction in archery deer harvest will help meet the 80% firearm hunter success goal identified in the deer management plan for LAUs.

Mentor Turkey Recruitment

Kirschenmann presented the recommended change to establish new rules within the Spring Turkey Hunting Season chapter that provides for Mentored Youth Turkey Recruitment licenses. He explained the objective of this proposal is to provide a means of encouraging youth participation with non-governmental organizations (NGO) that promote wildlife conservation and the recruitment, retention, and reactivation of hunters. Currently for youth hunters, an unlimited number of mentored spring and fall turkey licenses are available for those youth under the age of 16 and valid statewide wherever

a spring or fall turkey season is open, excluding Custer State Park. In addition, those youth who are 12 years of age who has completed a GFP's course of instruction in the safe handling of firearms are eligible to apply for limited draw prairie turkey licenses and to purchase an archery and/or Black Hills turkey license. A mentored youth turkey recruitment license sponsored by an NGO would be available to those youth 15 years of age and younger that do not already possess any type of spring turkey hunting license. A limited number of licenses would be made available by application to eligible NGOs for distribution.

Motioned by Bies, second by Whitmyre TO APPROVE THE RECOMMENDED CHANGE FOR MENTORED YOUTH TURKEY RECRUITMENT LICENSES. Motion carried unanimously.

DIVISION OF PARKS AND RECREATION

Dock 44 – Controlling Interest Approval

Sean Blanchette, program specialist, presented the Commission with a resolution to allow one partner of the current concessionaire at Dock 44 to assume the lease under a new LLC.

Motioned by Whitmyre, second by Bartling TO ADOPT RESOLUTION 22-07 (APPENDIX A)

Snowmobile Season Recap

Ryan Raynor, district park supervisor, informed the commission on the snowmobile season.

Spring Creek Marina Update

Pat Buscher, district park supervisor, provided an update on spring creek marina.

Lake Oahe Water Levels

Al Nedved provided an update on the low water levels on Lake Oahe.

Major Parks Construction Projects for 2022

Al Nedved provided an update on all major parks construction projects for 2022.

Camping, Visitation and Revenue Report

Al Nedved, Deputy Director for Parks presented monthly camping, visitation, and revenue reports.

DIVISION OF WILDLIFE

Nelson-Hendrickson GPA Exchange

Paul Coughlin, terrestrial habitat program, presented a GPA land exchange in Day County to swap the 200-acre Nelson-Hendrickson GPA valued at \$244,000 for the 240-acre Althoff property valued at \$244,000.

Motioned by Whitmyre, second by Locken TO ADOPT RESOLUTION 22-06 (APPENDIX B) APPROVING THE 200 ACRE LAND EXCHANGE IN DAY COUNTY.

Highly Pathogenic Avian Influenza Update

Chad Switzer, wildlife program manager, provided an update on the avian influenza outbreak that included a disease overview, symptoms, history, information on public health and safety, response, and current status. To date, avian influenza has been detected in Canada geese, snow geese, Ross's geese, lesser scaup, great-horned owls, red-tailed hawks, and bald eagles. Approximately 30 commercial turkey farms, one table egg layer and one backyard poultry facility has been impacted by the disease. Department staff, in cooperation with USDA-APHIS, have assisted with numerous commercial turkey farms by providing technical assistance and deterrent supplies for poultry owners to haze migrating waterfowl away from their operations. At this time, this outbreak is not expected to impact wild bird populations to the point of a population altering event.

Habitat Stamp Projects

Jason Jungwirth, senior wildlife biologist, and Paul Coughlin, wildlife program manager, presented the Commission with information regarding Aquatic and Terrestrial Habitat Stamp funded projects, including both accomplishments from 2020-21 and upcoming projects and efforts planned and underway for 2022. Terrestrial habitat projects planned for 2022 on Game Production Areas across the state total a \$2.7 million investment in habitat and public access. Aquatic projects planned for 2022 is an aggressive list with projects ranging from access improvements to dam repairs to habitat projects intended to improve fisheries.

Habitat Management on GPA's

Owen McElroy (Regional Habitat Program Manager) and Dan Sternhagen (Regional Terrestrial Resource Supervisor) gave a presentation over the different habitat management techniques used on Game Production Areas. Topics that were covered were Woody Habitat Planting, Invasive Woody Habitat Removal, Grassland Planting Methods, Grassland Management Techniques (Burning, Grazing, and Haying), and Typical Food Plots used.

Sunfish Catchability

Brian Blackwell, fisheries biologist, provided a powerpoint presentation explaining angler catches of hybrid sunfish (male bluegill x female green sunfish) were evaluated from a hatchery pond to determine the feasibility of hybrid sunfish for use in community fishing ponds. Angler catches of hybrid sunfish were highest during the fishing event immediately after stocking, and lower catches occurred in subsequent fishing events. Learned behavior (i.e., hook avoidance) likely resulted in reduced catch rates. The percentage of fish caught from the first stocking increased following the second stocking of 100 fish. The increase was probably facilitated by the newly stocked fish feeding on the angler's offerings. Angler catches were greatest during the first 20 minutes of fishing. Hybrid sunfish have the potential for use in community ponds but will require supplemental stockings, and during fishing clinics, all participants should fish at the same time.

License Sales Update

Tom Kirschenmann, wildlife division director, provided an update on resident and nonresident license sales.

Adjourn

Meeting adjourned at 10:00 a.m.

Respectfully Submitted,

A handwritten signature in blue ink, appearing to read 'Kevin Robling', is written over a horizontal line.

Kevin Robling, Department Secretary

**Public Hearing Minutes of the Game, Fish and Parks Commission
April 7, 2022**

The Commission chairman Russell Olson began the public hearing at 2:00 p.m. CT. Commissioners Julie Bartling, Travis Bies, Jon Locken, Russell Olson, Stephanie Rissler, Doug Sharp, Charles Spring, and Robert Whitmyre were present. Kotilnek indicated written comments were provided to the Commissioners prior to this time and will be reflected in the Public Hearing Minutes. Kotilnek then invited the public to come forward with oral testimony. Written comments attached.

Elk Seasons

No verbal comments

Missouri River (Pierre) Waterfowl Refuge

George Vandel – Pierre, SD – noted heavily used area for the public. This situation the evidence that all hunters will benefit is just not there. If this is connected it will force hunters onto public land. Noted sometimes landowners providing access pull out of WIA contracts. This is not good for the public or R3 of waterfowl hunters.

Nancy Hilding – Black Hawk, SD – the IRRC doesn't mind if you change the rule about your public notice. Says she submitted her letter and doesn't see her letter. Letter includes a map of the Pierre Missouri River bottom and concern of area that this area should be of protected status. This area has 3 sections that are included in the waterfowl proposal. It is an important bird area and if changes are made per the proposal, she recommends alternate areas be designated as refuge.

Bighorn Sheep

No verbal or written comments

Lake Francis Case Walleye Regulations

No verbal comments

Public Waters

No verbal comments

License Agent Processes

No verbal comments

Cancellation Policy

No verbal comments

The public Hearing concluded at 2:15 p.m.

Respectfully Submitted,

A handwritten signature in blue ink, appearing to read 'Kevin Robling', with a long horizontal stroke extending to the right.

Kevin Robling, Department Secretary

Appendix A

RESOLUTION 22 - 07

WHEREAS, Dock 44 is operated by A&E Marina, LLC., under the terms and conditions of a Concession Agreement with the Department of Game, Fish and Parks dated April 3, 2017 as authorized by the Game, Fish and Parks Commission for the marina, restaurant, lodging and retail facilities; and

WHEREAS, the existing two partners of A&E Marina LLC., have agreed to terms of sale of the membership interest of one partner in the LLC to the other partner; and,

WHEREAS, the remaining partner has filed for a name change of A&E Marina, LLC. to Dock 44 Marina, LLC.; and;

WHEREAS, the remaining partner desires to continue to operate the Dock 44 concession operation under the terms of the existing Concession Agreement dated April 3, 2017; and,

WHEREAS, the Department concurs with the change in ownership status, the change in name of the LLC., as well as the continued operation of Dock 44 via the remaining existing partner; and,

WHEREAS, in accordance with ARSD 41:13, a transfer of controlling interest in the Concession Agreement between existing partners is subject to written approval of the Game, Fish and Parks Commission,

NOW THEREFORE, BE IT RESOLVED, that the GFP Commission does hereby approve the transfer of the interest in the Dock 44 Concession Agreement dated April 3, 2017 from A&E Marina, LLC. to Dock 44 Marina, LLC.

Appendix B
RESOLUTION 22 - 06

WHEREAS, the State of South Dakota (held by and for the use and benefit of the Department of Game, Fish, and Parks (GFP)) owns an interest in real estate described as:

W $\frac{1}{2}$ SE $\frac{1}{4}$ and E $\frac{1}{2}$ SW $\frac{1}{4}$ of Section 7 and NE $\frac{1}{4}$ NW $\frac{1}{4}$ of Section 18, all in Township 123 North, Range 56 West of the 5th P.M., Day County SD; containing 200 acres, more or less, hereinafter referred to as GFP PROPERTY, which is valued at \$244,000.00; and

WHEREAS, Earl Althoff, Trustee of the Earl Althoff Revocable Living Trust (ALTHOFF), 44474 139A Street, Waubay, SD 57273, owns an interest in real estate described as:

E $\frac{1}{2}$ SW $\frac{1}{4}$ of Section 8 and NW $\frac{1}{4}$ of Section 17, all in Township 123 North, Range 56 West of the 5th P.M., Day County SD, containing 240 acres, more or less, hereinafter referred to as ALTHOFF PROPERTY, which is valued at \$244,000.00; and

WHEREAS, South Dakota law (SDCL 41-2-29.2) provides that GFP has the power, authority, and duty to trade or exchange real property owned by the State and held by GFP if the GFP Commission shall first determine that real property more suitable to GFP purposes may be obtained by an exchange, provided the parcels of real property to be exchanged are of equal value; and

WHEREAS, GFP and ALTHOFF desire to exchange interests in GFP PROPERTY and ALTHOFF PROPERTY, and the GFP Commission having determined that ALTHOFF PROPERTY is more suitable to GFP for GFP purposes than GFP PROPERTY, and that GFP PROPERTY and ALTHOFF PROPERTY are of equal value as determined by a qualified appraiser; and

WHEREAS, South Dakota law requires that the conveyance of GFP PROPERTY be approved and executed in the manner provided by SDCL 5-2-11. NOW, THEREFORE, BE IT RESOLVED that the GFP Commission hereby takes final action on and approves the above referenced exchanges of the above described parcels of real property and hereby directs GFP to take all steps necessary to effectuate the exchange of GFP PROPERTY for ALTHOFF PROPERTY under procedures mandated by statute.

BE IT FURTHER RESOLVED that the GFP Commission does hereby ratify and confirm the Department's designation of the ALTHOFF PROPERTY being acquired pursuant to the exchange authorized by this Resolution for utilization by the Division of Wildlife for the purpose of game production and, further, does hereby expressly designate and classify the ALTHOFF PROPERTY being acquired pursuant to the exchange authorized by this Resolution for use as a game production area.

Appendix C
RESOLUTION 22-08

WHEREAS, Justin Allen of Pierre, South Dakota, submitted a Petition to the Game, Fish and Parks Commission (Commission) dated April 1, 2022, requesting that the Commission amend ARSD § 41:06:44:01 and 41:06:63:01 (Apprentice, Mentored and Youth deer) to move the start date for the apprentice, mentored and youth deer hunting season to September 1st for the reasons more fully set out in the petition (hereinafter referred to as “the Petition”); and

WHEREAS, all members of the Commission have been furnished with and have reviewed a copy of the Petition; and

WHEREAS, the Commission has been advised that a copy of the Petition has been served on all members of the Interim Rules Review Committee and Director of the Legislative Research Council as required by SDCL § 1-26-13; and

WHEREAS, the Commission has been advised that SDCL § 1-26-13 requires that within thirty (30) days of submission of a Petition, the Commission shall either “deny the petition in writing (stating its reasons for the denials) or shall initiate rule-making proceedings in accordance with SDCL 1-26-4.”; and

WHEREAS, the Commission has been advised and is of the opinion that a hearing on the Petition is neither statutorily required nor necessary; and

WHEREAS, the Commission has reviewed and carefully considered the requirements and procedures set out in SDCL §1-26-13 and the contents of the Petition, including the reasons advanced by the Petitioner in support of changing the start date to September 1st for apprentice, mentored, and youth deer hunting; and

WHEREAS, the change requested in the petition would overlap with other season start dates and potentially create conflict with other users; and

WHEREAS, the current season structure offers ample opportunity and is not a hinderance to hunter recruitment efforts; and

WHEREAS, this will be a topic to be further discussed through the public comment for the revised deer management action plan.

NOW, THEREFORE, BE IT RESOLVED, that the Commission does hereby deny the Petition for the reasons hereinabove stated in this Resolution, which said Resolution as adopted by the Commission shall constitute the Commission’s written denial of the Petition and its reasons therefore.

BE IT FURTHER RESOLVED that the Petition, a record of the Commission’s discussions concerning same, and this Resolution be made a part of the Minutes of the Commission meeting at which this Resolution is adopted, and further, that the Department be and it is hereby authorized and directed in compliance with SDCL §1-26-13 to serve a copy of an extract of that portion of the Commission minutes which pertain to the Commission’s discussion of the Petition and its adoption of this Resolution, including a copy of the Resolution, on all members of the Interim Rules Review Committee and Director of the Legislative Research Council with copies also to be provided to the Petitioner, Justin Allen of Pierre, South Dakota.

Public Comments

Cancellation Policy

Karleen Dagit

Lead SD

Position: support

Comment:

I was charged \$168.00 for a cancellation from June 6-9 at Blue Bell Campground for two rustic cabins and one tent site. By mistake the reservation clerk did only 2 nights, so I needed to make another reservation for the third night! Quite upset and feel this is terribly unfair since they were so hard to get in the first place back in January and needing to cancel because of medical necessities. A total or much smaller refund would help me and so many others. Will never book again if this policy is not changed.

Elk Season

Ron Schauer

Crooks SD

Position: oppose

Comment:

I am opposed to the large increase in proposed elk licenses in the Black Hills units. This is too large an increase and will result in a drastic decrease in overall elk populations in the hills. Resulting in substantial decreases down the road. This same scenario was used several years ago, and the results were not good. I am not against increasing tag numbers but not at the rate proposed. The second area of comment involves the CSP elk proposal. I do not understand why there are no cow elk licenses proposed? With all the black hills units surrounding the park proposing increases in any and cow elk tags, why not propose a "few" cow tags in the park. It is my firm belief that having a few cow tags in the park (5-10) would not effect the overall elk population and allow those people sitting on many years preference have a possible opportunity to draw a cow tag. Thanks you for your time and consideration.
Ron Schauer, retired GFP employee.

Kelly Koistinen

Spearfish SD

Position: oppose

Comment:

I am opposed to the allocation of Elk Licenses to non-residents who own land within SD, but don't live in SD. The Elk are for SD residents only! Don't allow non-residents to hunt elk in South Dakota. It is reserved ONLY for the citizens of this state. If the G, F, &P allows non-residents who own land, to hunt elk in this state, then the next step will be allowing non-residents to hunt here in SD also! I'm not in favor of allocation of elk licenses to any non-resident!

Caitlin Gust

Hermosa SD

Position: oppose

Comment:

No comment text provided.

Dustin Rice

Rapid City SD

Position: oppose

Comment:

I am writing in response to the proposal of increasing Elk tags across the Black Hills as I strongly oppose this increase, specifically for the September and October Black Hills hunting seasons. Having the privilege of hunting elk the past 5 years here, either with a tag or with family/friends who have drawn tags, I am a little worried about what the extra pressure will do to the quality/age class of the bulls and more importantly what it will do to the quality of hunt hunters will get to experience. I am all for getting more people elk tags but I don't feel we should hold these hunts in the category of "opportunity hunting". With hunters, on average, waiting into the high teens to draw these tags we need to retain the top-quality hunt and animals the Black Hills is known for while not having to battle crowds of people in doing so. We must remember the pressure each additional tag is going to present not only during the hunting seasons but also during scouting season. We cannot blame the rifle hunters who are out scouting during archery season, but every extra tag holder just compounds on the pressure these animals experience. If this is an actual high population issue, I am all for the December hunting seasons as I think that is an excellent way of managing a herd size.

Having also hunted elk in other states (Colorado, New Mexico, and Wyoming) over the past 6 years and there is nothing that compares to the quality of hunt that the Black Hills provides. I really hope we don't make the mistake of trying to make this hunt an "opportunity hunt" just trying to please a few people who believe they deserve a tag. We have created a truly special hunt here in South Dakota so let's not ruin it.

Wayne Johnson

Vetal SD

Position: other

Comment:

Qualifying Landowners, with a minimum 10,000 dollars of provable actual damages per year, need to have at least one transferable Any Elk license every year.

Reduce the Any Elk licenses by a minimum of 50% for the PRE-11 units.

Structure a different set of guidelines and regulations for Prairie Elk as opposed to Black Hills Elk. The vast majority of the land in the Black Hills is Public, while the vast majority of Prairie is Private Land. One size doesn't necessarily fit all.

If these three changes are not made, there will be no free Elk access of any kind on the Wayne Johnson Ranch for the foreseeable future.

Lake Francis Case Walleye Regulations

Bill Barnett

Hartford SD

Position: oppose

Comment:

No comment text provided.

License Forms and Fees

Timothy Mueller

Omaha NE

Position: other

Comment:

You should offer a discounted price for seniors on non resident fishing and hunting permits ,I've purchased a SD fishing liscence for over 30 years consecutive 8f you want us to keep growing the sport and bringing our families ,you should consider this

Kurt Van Vleet

Redfield SD

Position: other

Comment:

To Whom it may concern, I have several spring snow goose hunters during March and April. It is very for me to try and explain why South Dakota has a Habitat Fee for this Spring Conservation hunt. This is a migratory bird. Can you please explain what habitat is needed for them. Thank You for your time. Kurt Van Vleet with Pheasant Country Lodging 605-460-1423

Missouri River Pierre Waterfowl Refuge

Jason Rumpca

Pierre SD

Position: oppose

Comment:

I pass shot geese in January and February by the dam. I also live near the water in Pierre and keep tabs on the migration and geese on Sharpe. I witnessed fisherman in boats below the dam fishing by the bridges and the mouth of the stillin basin. Boats do not move geese out of the area. Geese would move slightly if boats drove right next to them, but that's about it. Geese are not moved out of the area due to boat access. There are plenty of refuges up and down the river around Pierre. Adding the proposed refuge will not change the pattern of geese in the area, but it will clearly limit access to public hunting. Please do not add the proposed refuge.

Thomas Kallemeyn

Pierre SD

Position: other

Comment:

No comment text provided.

Aaron Rumpca

Pierre SD

Position: oppose

Comment:

I don't think this is a rational solution to decreased birds numbers. They currently have enough water habitat. Lake Oahe and Sharpe are huge. People barely pressure these birds on the water as it is. This will just limit public hunting to our youth. Private land owners need to stop and even reverse drain tiling. This will actually help waterfowl habitat and let the birds flourish. Just look around in the winter. It's grazed to nothing and farmed from ditch to ditch. Heck even the ditches a cut. Habit is everything. How many nests do Stephens farm over in the spring? Let's do a study.

Bob Brandt

Rapid City SD

Position: oppose

Comment:

This is a terrible proposal; it takes more publicly accessible land from the average SD hunter and forces us to go to high priced pay to hunt outfits. They already get away with baiting geese to their land, now they want you to restrict or ban hunting on thousands of acres of accessible land. This would have been a bad proposal when the geese population was high, but it is especially bad with the waterfowl numbers very low. Goose hunting on public land around Pierre has always been a very tough hunt, this bad proposal would make it much harder. I am 68 years old and have been hunting in SD since I was 12. Everyone wants to increase the numbers of new, and younger hunters, this bad proposal will restrict their opportunity to hunt geese on thousands of acres of land that has historically been available to the average hunter. Please defeat this proposal. Thank you for your consideration. Bob Brandt

Felix Recek

Elkhorn NE

Position: oppose

Comment:

Why have a early season for Canada geese when you people are trying to protect them

Sam Sommers

Sioux Falls SD

Position: support

Comment:

Waterfront need roosting areas ! Keep working on making this happen. Thanks Sam

Pat Malcomb

Sioux Falls SD

Position: oppose

Comment:

I strongly oppose closing PUBLIC land to goose hunters. Why is this even being seriously discussed, its a money grab by an outfitter that will backfire. Those of us that hunt this public land will never pay to hunt, we will just quit hunting the Pierre area altogether. As sportsman we have the right to hunt land we helped pay for vote know to this proposal

Kyle Villa

Pierre SD

Position: oppose

Comment:

No comment text provided.

Bill Barnett

Hartford SD

Position: other

Comment:

I do not care about Pierre and the area landowners and their friends. Gave up on Pierre hunting waterfowl years ago unfortunately the GF&P rule making disease has moved over to NE South Dakota the past 20 years and soon I will be done hunting any waterfowl as a freelance public access resident hunter of 50 years in South Dakota. Our state elected and appointed officials have done miserable job and do not even listen to their own subject matter experts for guidance for example John Cooper and Bill Antonides. As a landowner in Spink County I have not placed one piece of Drain Tile in the ground and this fall the NRCS office of Redfield will help me enroll our crop ground into CRP. Similar direct Action On the GFP has to been done to reverse the ongoing depletion & mismanagement of access to public resources and growth of privatization of natural resources impacting South Dakota residents. Signing OFF the "Last of the Mohicans" . Pray for Ukraine. To be subjugated is wrong.

Marlin Fallon

Ft.Pierre SD

Position: oppose

Comment:

No comment text provided.

James Bowers

Pierre SD

Position: oppose

Comment:

Your proposal to increase the area of the Pierre Waterfowl refuge will DECREASE waterfowl hunting opportunity for our community. Why, given the projection of the decrease in the popularity of waterfowl hunting and thus a decrease in funding, would you want to take away opportunities to hunt? South Dakota should be considering ELIMINATING some refuges, and INCREASING hunting opportunity. This proposal does not add to the quality of life here. Quite the opposite actually, it decreases quality of life for local residences.

Susan Leach

Pierre SD

Position: support

Comment:

No comment text provided.

Pat Malcomb

Sioux Falls SD

Position: oppose

Comment:

No comment text provided.

Other

Nancy Hilding

Black Hawk SD

Position: oppose

Comment:

Nancy Hilding
President
Prairie Hills Audubon Society
P.O. Box 788
Black Hawk, SD 57718
Feb 27th, 2022

We oppose proceeding with buying the proposed shooting complex property at Meade County off Elk Vale Rd at this time. We fear the site may be too hilly to adequately provide of control of lead, especially in the north unit. We believe there will be many other adverse environmental impacts. The draft EA is totally inadequate and does not support a FONSI. We doubt you have figured out the true cost yet, because you have not factored in the full costs of environmental mitigation,

You should wait to purchase until after the National Environmental Policy Act review is complete and the USFWS issues a FONSI or a ROD, so you can adequately understand all the costs, of this site.

Thanks,

Nancy Hilding
President
PHAS

David Johnston

Rapid City SD

Position: oppose

Comment:

I do not support the building of a new shooting range north of Rapid City. We have a shooting range down by Hot Springs. If we need something better, use the money to improve and expand that range.

Cheryl Whetham

Hill City SD

Position: oppose

Comment:

I am writing to oppose the 175 Bay shooting range planned in Meade County, close to Pennington county. I am against spending \$5 million taxpayer dollars for an item that a small percentage of the population will use or benefit from. In addition to spending taxpayers dollars, there is a concern for noise, safety and the environmental impact of being so close to Elk Creek. A better use of 5 million taxpayer dollars would be to give people some property tax relief.

Chloye Anderson

Rapid City, SD

Position: oppose

Comment:

Article in March 2, 2021, Rapid City Journal. GF&P looks to purchase land for gun range.

Mr Scull purchase land in late 2020. He then transferred the purchase agreement for the purchase agreement to parks and Wildlife Foundation. The foundation completed the transaction on March 25, 2021.

Apparently This deal has been a year in the making and the newspaper public is just being informed.

Between purchase date and transfer date who is responsible for property payments and land taxes, Mr. Scull or GF&P and Wildlife Foundation? Years ago the city of Sturgis , SD tried to have a gun range built. Location to close to Bear Butte and Rally bikers bar and campgrounds. No gun range was built in Sturgis.

Today the House Appropriations

Committee is meeting for funding of the bill.

If it is voted down, who will be paying for this property now?

Thank you for reading my comments

Sincerely, Chloye M. Anderson

Jackie Dittman

Rapid City SD

Position: oppose

Comment:

See attached letter for meeting in Pierre Friday regarding the shooting range.

Thank you.

Jackie Dittman

Rapid City SD

Position: oppose

Comment:

Sorry to be a bother, but I am hoping to switch the previous version of my letter regarding the shooting range to this version.

Thank you so much!

Jackie

Scott Wright

Hermosa SD

Position: support

Comment:

AS a Hunt Safe instructor we have always needed a safe structured(shooting range) place to allow kids to shoot, let alone what a place to educate it would be! It would also be a huge boost to western South Dakota's economy. Please make this range happen! Thank you for your time.

Leland Breedlove

Rapid City SD

Position: support

Comment:

Please do whatever is necessary to facilitate the development of the Meade county shooting range.

I moved here 6 months ago from Oregon. One of the motivators for the move is the freedom concerning firearms in South Dakota. I am shocked at the lack of training facilities.

In Oregon, I lived in a town of 16,000 population, and we had four shooting ranges within a 20 minute drive of my house, three of which have 100 yard or greater rifle ranges. Here in Rapid City, population 75,000, there is one indoor 30 yard range. The nearest rifle range is a 1 hour drive away.

Shooting is a perishable skill. People who own firearms should practice with them! And practicing with firearms requires a safe place (NOT Barretta Road!!!). I will happily support with my time and money a safe place to practice with firearms.

Please facilitate the development of the Meade county shooting range.

Thank you!

Leland D. Breedlove
503-998-8681
lelandb@gmx.com

Physical address:
2912 Chapel Lane #20,
Rapid City, SD 57702

Mailing address:
PO Box 1381
Rapid City, SD 57709

David Heikes

Rapid City SD

Position: oppose

Comment:

Hello GF&P folks: I write primarily to oppose the use of dogs for hunting on public lands (not related to bird hunting). A practice that can have negative effects on a range of species. I say not to the Custer expansion and a maybe to the gun range (but people need to be heard).

Andrea Kipp

Norfolk NE

Position: support

Comment:

Expanding Palisades State Park is a great idea! My family enjoys camping but we have a pop-up camper. It doesn't have a toilet or other facilities, so we rely on the facilities provided at the campsite. We would love to see showers included in the expansion plans!

Ryan Nichols

Hot Springs SD

Position: oppose

Comment:

"limit the number of archery access permits for Unit WRD-27L to no more than 20 "any deer" access permits for residents" What is the rationale behind such a decision? Having archery hunted WRD-27L quite extensively for the last 8 years, I fail to see what this will accomplish. There is more pressure from upland bird hunters, road hunters and rifle hunters without the proper license than what I have encountered while archery hunting. I will agree that the adult male mule deer population is not what it was since 2018 and the number of mature animals has declined. However, I have observed over 100 whitetails in a single evening from one stand. I would definitely support a limited access for mule deer, but limiting whitetails, is absurd since their population has exploded.

Public Waters

Felix Recek

Elkhorn NE

Position: oppose

Comment:

The game commission needs to lower the limits have you guys ever heard of active Target and panoptics that is going to take a lot of fish out of the lakes

Bill Barnett

Hartford SD

Position: support

Comment:

No comment text provided.

Waterfowl Seasons

Bill Barnett

Hartford SD

Position: support

Comment:

No comment text provided.

Eric Pulis

Aberdeen SD

Position: oppose

Comment:

I oppose adding the merganser bag limit to the traditional duck bag limit. As the justification stated, there are few mergansers harvested in South Dakota. Merganser inclusion in the duck bag will not significantly reduce or increase harvest of mergansers or ducks. Additionally, the separate bag limits did not lead to hunter noncompliance with regulations (exceeding baglimits). I oppose the reduction waterfowl hunting opportunity. I do support the addition of mergansers to the bag limit to those who choose the three splash rule. As the reasoning for having the three bird option is for hunter who may not be entirely confident identifying waterfowl.

Chuck Dieter

Brookings SD

Position: oppose

Comment:

I am opposed to allowing nonresidents to hunt Canada geese during the September season

Public Comments

Cancellation Policy

Jamey Tollefson

Lead SD

Position: other

Comment:

I just finished looking at available sights in western South Dakota for the 4th of July weekend, and there are nearly no sites available.

I originally thought that no penalty would be a good idea to free up unused campsites, but now I am thinking that it will make reserving farther in advance even worse than it is now. Many sites are being reserved the Tuesday or Wednesday before the weekend. If there is no penalty, they could be reserved even farther in advance. When I make a reservation I make every effort to be there the first night of my reservation.

Perhaps a different way to change the current policy would be no penalty for a total cancellation, but a daily penalty for not showing up during a reservation. With the new log in system, it should be able to be tracked.

Under the current system people are "gaming" the system at the expense of others.

Elk Season

Mitchell Iverson

Spearfish SD

Position: oppose

Comment:

I strongly oppose the proposed 46% increase in cow elk tags and the 26% increase in any elk tags. A 46% increase in cow elk tags is a drastic measure. A similar approach was used around 2006 and it took years for elk population to recover. Keep in mind that chronic wasting disease has potential to reduce elk populations dramatically in the upcoming years. In addition the opening of the forest canopy over the past 10 years has increased forage production. Elk reduce fine fuels in steeper uplands where cattle rarely graze. This proposal is described as a way to increase hunting opportunities but it will drastically reduce them over the long run. I have worked as a range scientist/manager for 32 plus years and have consulted with biologists about this proposal and none of them agree with it from an ecological or economic standpoint. I do not object to the concept of increasing tags to manage elk numbers but this is an extreme approach and appears to be a solution looking for a problem. I have worked for years with land owners on elk damage problems in MT and SD. Based on my experience, SD landowners do not understand commonly accepted approaches to limit elk damage to fences and crops. More effort could be spent for education which will reduce land owner complaints. No matter what GFP does you will always have complaints about lack of sufficient elk tags. Moreover, this proposal will increase hunter complaints about lack of elk tags in the future.

License Forms and Fees

Jeff Gulbransen

Keystone SD

Position: other

Comment:

Why is there an agent fee if purchasing a fishing permit from the game and fish directly. I can see it if I bought from a hardware store or anyone else selling permits. Why then aren't the permits just \$4.00 more, since they actually are.

Other

Scott Bakker

Sioux Falls SD

Position: oppose

Comment:

I oppose the nest predator bounty program.

Sara Parker

Sioux Falls SD

Position: oppose

Comment:

As a lifelong resident of South Dakota, I am writing in opposition of the Nest Predator Bounty Program. It is wasteful, inhumane and not based on science. When South Dakota Game Fish and Parks accepted public input on this program in 2020, less than 7% of the 400+ written submissions were in favor of the program. Some reasons many South Dakotans are opposed to this bounty program:

1. It could unbalance our state's ecosystem. There was no scientific study done on the number of these "nest predator" species that currently inhabit South Dakota and no cap on each species to be killed. According to the SD Nest Predator Bounty Program Operational Dashboard, the following tails have been submitted since this bounty program began in April 2019: 107,400 Raccoon, 16,091 Striped Skunk, 10,934 Opossum, 1,142 Red Fox and 1,107 Badger. Since the program began each spring, the kill totals don't include the many young that starved to death when their mothers were trapped.
2. Trapping regulations are weak in South Dakota. Required trap check times are over 3 days west of the Missouri River and over 2 days east of the Missouri River (with extensions for weather and illness). SD doesn't require identification on traps, so there is no accountability for trappers who don't follow the rules.
3. Animals caught in traps for several days can be attacked by other animals, starve, dehydrate, or mangle their mouths and limbs trying to free themselves. Since this bounty program begins in the spring, many young starve to death when their mothers are trapped.
4. Snares and traps are indiscriminate - any animal can fall victim, including endangered species and companion animals. This is a big enough problem that GFP created videos teaching the public how to free dogs from traps and snares.
5. There is no scientific tracking of the results to the pheasant population, to measure the success or failure of the program. The 2019 summer brood count didn't show an increase in pheasant numbers and GFP discontinued their annual pheasant brood survey the following year.

The law recognizes the lives of these animals and the funds expended to kill them as collective resources. Please end the Nest Predator Bounty Program.

Carol Kendall

Rapid City SD

Position: oppose

Comment:

The Nest Predator Program must be stopped for the sake of the eco system and welfare of the young animals relying on their mothers for life sustaining food and protection.

I do not understand how this practice, in any way, teaches youngsters to love and respect the outdoors. What it does teach them is that money is more important than life, killing is acceptable if the price is right, and the value of the natural world is fair game in the eyes of special interests.

I would appreciate it if someone within the oversight committee would explain what this program is supposed to Accomplish and data supporting that. My assumption is it is about pheasant population and the almighty money pheasant hunting brings into our state.

Diana Holden

Parkston SD

Position: oppose

Comment:

Trapping is inhumane. Allowing inhumane treatment of animals is sending the message to our youth that it is okay and acceptable to be cruel whether it be to animals or human. We need to take responsibility for upsetting the natural order of things by taking natural way of life from them forcing them to adapt and then cruelly killing them when we don't like what we have forced them to do. Face it - people are the cause of cruelty and when you allow trapping which is just costing the state valuable resources, you are teaching our youth to not value life and that is poor moral character!

Waterfowl Seasons

Robert Curtis

Redfield SD

Position: other

Comment:

If you do not let nonresidents hunt Canada geese in the September season in Region 3 then don't let them hunt in Region 4. To allow them to hunt in Region 4 and not in Region 3 is pretty hypocritical. So, if you are going to continue to let them hunt in Region 4 then you better let them hunt in Region 3.

To Whom it May Concern,

I am writing this letter to express my strong opposition towards the proposal to increase the number of elk tags for the Black Hills rifle and archery seasons. I will start by saying I have not been lucky enough to draw an elk tag in the Black Hills as of yet. However, I have been lucky enough to be a part of many hunts here in the Black Hills across a number of our units (primarily H2 and H3) in the 10 +/- years I have been active in the hunting world. From what I have witnessed over the years, I have no doubt in my mind that increasing the tags in the Black Hills will have a negative impact on the elk herds and quality of hunt we are lucky to possess here in South Dakota. These animals already face incredible amounts of pressure almost year-round from humans and predators alike. We have lion quotas that are rarely met, increased sightings of wolves, and the biggest threat (in my opinion) of all: social media. There are more people in the woods now year-round than ever before. The last thing these animals need is more people crawling through the woods for the sake of "opportunity". Social media has caused such an influx of ill-equipped hunters that watch a YouTube video and think they can just waltz out and shoot an elk. I read far too many posts last year about people finding dead elk that had been wounded during hunting season because of bad shots. I understand anyone is capable of a bad shot but I believe it will only get worse. Populations and herd makeup can be better managed using different methods other than tag increases. If GFP wants more mature bulls harvested then establish a branch antler requirement. Create winter "antlerless" and/or "spike only" seasons to help maintain healthy herd populations. We need to put the animals' well-being before the needs/wants of humans. The Black Hills tag is coveted and referred to as once in a lifetime for more reasons than just the number of years it can take to draw. Let's not lose all of that for the sake of satisfying human greed.

Sincerely,

Caitlin Gust - Hermosa, SD

Nancy Hilding
President
Prairie Hills Audubon Society
P.O. Box 788
Black Hawk, SD 57718
Feb 27th, 2022

SD Game, Fish and Parks Commission
Joe Foss Building
523 East Capitol
Pierre, SD 57501

Dear Commission,

RE: Proposed rule on Missouri River (Pierre) Waterfowl Refuge

**Letter of support for assigning a new status of Waterfowl or State Game Bird
Refuge to the
SD Important Bird Area - the Pierre Missouri River Bottomlands**

The National Audubon Society has designated a part of the proposed Missouri River (Pierre) Waterfowl Refuge as a South Dakota Important Bird Area (IBA). Here are hyperlinks to learn more about that designation.

<https://www.audubon.org/important-bird-areas/pierre-missouri-river-bottomlands>

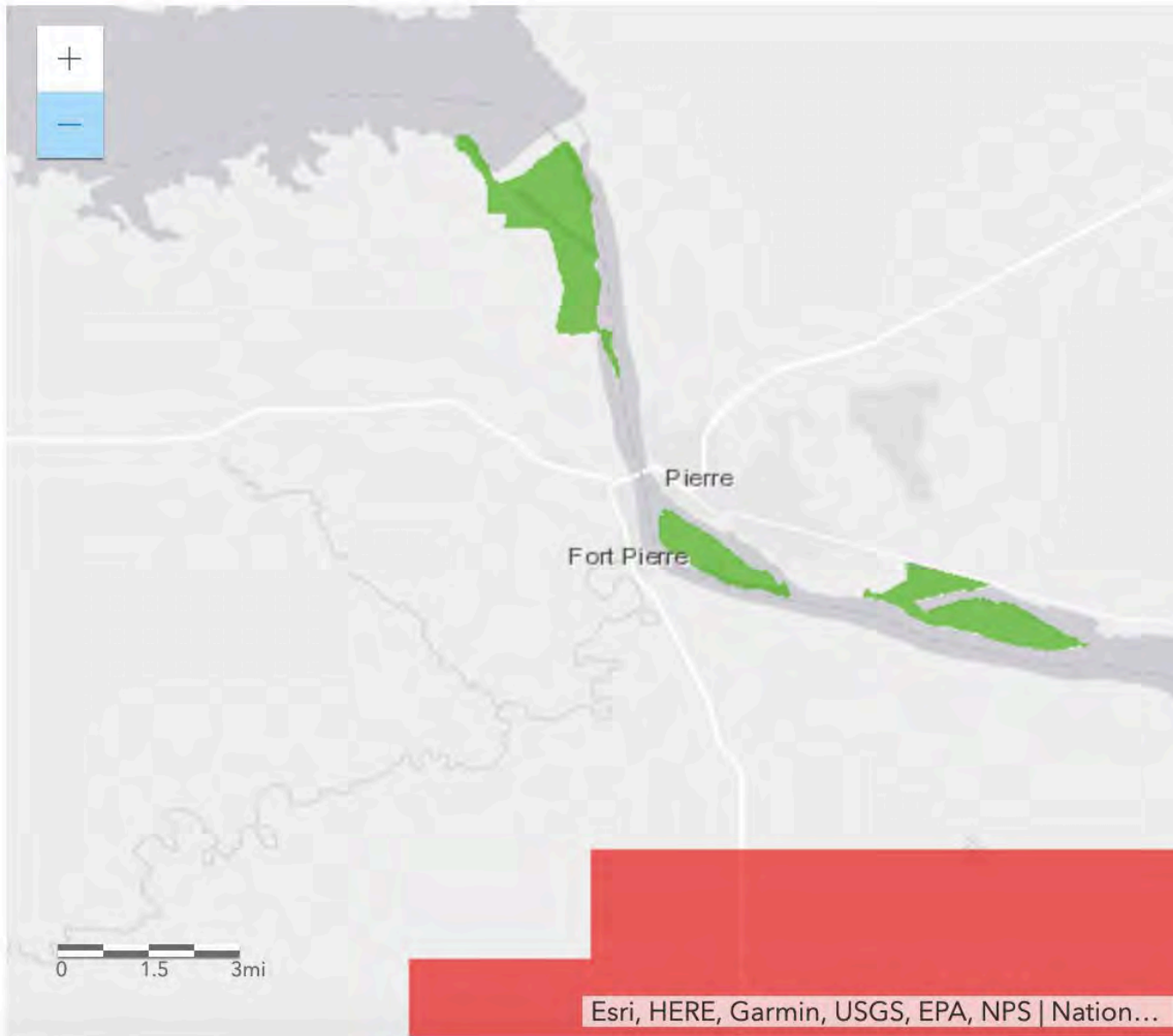
<https://netapp.audubon.org/iba/Reports/4973>

We support a waterfowl, state game bird and/or state game refuge status for the IBA. At this time, we are neutral on the designation of the rest of the area proposed as the Missouri River (Pierre) Waterfowl Refuge, as we don't know enough about it.

If this turns out to be controversial & compromise is desired, please consider an alternative where you designate of subset of the proposed area as a Refuge, but not the entire proposal.

Pierre Missouri River Bottomland

South Dakota



Thanks,
Nancy Hilding

President
Prairie Hills Audubon Society

GAME, FISH & PARKS

523 East Capital
Pierre, SD 57501
(605)773-3396
Fax (605)773-6425

Chris.Petersen@state.sd.us

REQUEST FOR LISTS OF LICENSE HOLDERS

Application

Type of List Requested SGNR

Number of licenses in list CO 2,413, OK 766, TX 2,677 and UT 837 = 6,693

Name of Person, Entity, or Organization requesting list:

Dale W. Critchfield, Real Western Hunting, LLC and Real Western Wings, LLC

Address of Person, Entity, or Organization:

Dale W. Critchfield RWH / RWW 2706 McKinney Drive Cheyenne, WY 82009

How would you like your list sent to you: (email) or disk

Phone Number

307-221-7434

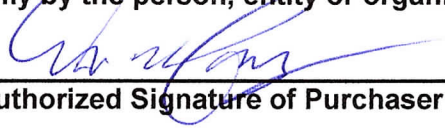
Purpose for which list will be used:

To solicit sportsmen for big game and/or bird hunting

This list is Names and Mailing Addresses ONLY

The sale of lists by the Department of Game, Fish & Parks is authorized by SDCL 1-27-1 and ARSD 41:06:02:04, 05 and 06. The fee for a Game, Fish & Parks Commission approved exception is \$100, otherwise the fee is \$100 per thousand names or a minimum of \$100 whichever is greater.

Unless requested and approved as part of this request, the license list will not include anyone under eighteen years of age. Names are for one-time use only and are to be used only by the person, entity or organization approved per this request.


Authorized Signature of Purchaser

4/29/22
Date

Date of Commission Action

GAME, FISH AND PARKS COMMISSION ACTION FINALIZATION

Application for License Chapter 41:06:01

Commission Meeting Dates:	Proposal	March 3-4, 2002	Pierre
	Public Hearing	May 5, 2022	Custer State Park
	Finalization	May 5-6, 2022	Custer State Park

COMMISSION PROPOSAL

Proposed changes from last year:

1. Remove the requirement for unlimited access permits for archery, muzzleloader, mentor, youth, and apprentice deer license holders to hunt certain deer hunting units and public lands.
2. Limit the number of archery access permits for Unit WRD-27L to no more than 20 "any deer" access permits for residents and no more than 5 "any deer" access permits for nonresidents.

SUPPORTIVE INFORMATION

Research on R3 efforts (i.e., Recruitment, Reactivation, Retention) has identified rule/regulation complexity to be one of several obstacles for new sportsmen and women. The removal of these access permits will greatly simplify hunting regulations regarding mentor, archery, muzzleloader, youth, and apprentice deer license holders while having no impact to deer management in these areas. The number of access permits currently available, across all of these seasons, has created unnecessary complexity for sportsmen and women as well as the administration of these access permits in the licensing system.

Unlimited access permits were established with the intent to evaluate harvest and participation on specific management areas by deer hunters with statewide or region-wide (e.g., West River Archery Deer) license types including archery, muzzleloader, mentor, youth, and apprentice license types. Deer harvest and participation was evaluated on all areas that required an access permit in 2019 and results were presented to the Commission. As a result, the Commission took action to limit archery deer access permits to 500 residents and 125 nonresidents on management unit 35L and no other unlimited license types or access permit areas were limited. Since 2019, no changes have been made to the number of access permits available for archery deer hunters in management unit 35L and no further changes have been made to the unlimited access permit areas.

Through the 2021 deer hunting season, hunting effort and harvest success by access permit users has been collected, providing sufficient baseline information regarding use on these areas. Harvest and success by hunters with statewide or region-wide license types will continue to be estimated at the firearm deer management unit level. In the event there is a desire to consider limiting access permits on additional areas and user groups, harvest and success data will be used to evaluate use by user groups on these areas beginning the 2022 deer hunting season.

This change will simplify deer hunting regulations for statewide and region-wide deer license type user groups and reduce complexity of the deer licensing system.

Limited access units (LAUs) are intended to reduce hunter densities and provide a quality hunt experience. Trend data of supports limiting the number of resident and nonresident archery access permits for Unit WRD-27L to help meet its LAU objective. In addition, a reduction in archery deer harvest will help meet the 80% firearm hunter success goal identified in the deer management plan for LAUs.

DEPARTMENT RECOMMENDATION

Recommended changes from proposal: None.

APPROVE _____ MODIFY _____ REJECT _____ NO ACTION _____

Access Permit Survey Archery Deer Harvest Projections

Custer National Forest (35L)

Year		Permits Issued	Projected Hunted	Hunter Success	Permit Success	Harvest Projections								Total Deer Harvest
						Whitetail				Mule Deer				
						Bucks		Does		Bucks		Does		
Adult	Fawn	Adult	Fawn	Adult	Fawn	Adult	Fawn	Adult	Fawn					
2014	Resident	262	112	14%	6%	3	0	0	0	13	0	0	0	15
	Nonresident	105	75	28%	20%	2	0	0	0	19	0	0	0	21
2015	Resident	355	176	12%	6%	3	0	0	0	16	0	1	1	21
	Nonresident	102	71	22%	15%	4	0	0	0	12	0	0	0	16
2016	Resident	488	270	13%	7%	8	0	4	1	19	0	1	0	34
	Nonresident	172	134	24%	19%	3	0	0	0	28	0	0	1	32
2017	Resident	497	304	8%	5%	3	0	0	0	20	0	1	0	24
	Nonresident	326	249	21%	16%	6	1	4	0	31	1	7	1	51
2018	Resident	733	337	6%	3%	4	0	0	0	13	0	1	0	19
	Nonresident	415	281	16%	11%	7	0	0	0	36	0	3	0	46
2019	Resident	500	267	8%	4%	3	0	0	0	16	1	0	0	20
	Nonresident	125	103	13%	11%	7	0	0	1	3	0	3	0	13
2020	Resident	497	275	10%	6%	6	0	0	0	19	0	3	0	28
	Nonresident	122	92	34%	26%	12	2	0	0	17	0	2	0	32

Hill Ranch GPA (27L)

Year		Permits Issued	Projected Hunted	Hunter Success	Permit Success	Harvest Projections								Total Deer Harvest
						Whitetail				Mule Deer				
						Bucks		Does		Bucks		Does		
Adult	Fawn	Adult	Fawn	Adult	Fawn	Adult	Fawn	Adult	Fawn					
2014	Resident	126	54	14%	6%	4	0	1	0	2	0	0	0	7
	Nonresident	23	8	29%	10%	2	0	0	0	0	0	0	0	2
2015	Resident	136	61	9%	4%	1	0	4	0	0	0	0	0	5
	Nonresident	33	18	0%	0%	0	0	0	0	0	0	0	0	0
2016	Resident	157	51	6%	2%	3	0	0	0	0	0	0	0	3
	Nonresident	52	24	24%	11%	3	0	0	0	3	0	0	0	6
2017	Resident	149	60	7%	3%	1	1	1	0	0	0	0	0	4
	Nonresident	62	23	5%	2%	0	0	0	0	1	0	0	0	1
2018	Resident	229	62	2%	1%	0	0	1	0	0	0	0	0	1
	Nonresident	82	31	8%	3%	1	0	0	0	1	0	0	0	2
2019	Resident	171	42	11%	3%	2	0	0	0	2	2	0	0	5
	Nonresident	64	20	7%	2%	1	0	0	0	0	0	0	0	1
2020	Resident	186	69	15%	6%	2	0	3	3	2	0	0	0	10
	Nonresident	24	15	50%	31%	5	0	2	0	2	0	0	0	8

APPROVE _____ MODIFY _____ REJECT _____ NO ACTION _____

Access Permit Survey Archery Deer Harvest Projections

Little Moreau GPA (24B)

Year		Permits Issued	Projected Hunted	Hunter Success	Permit Success	Harvest Projections								Total Deer Harvest
						Whitetail				Mule Deer				
						Bucks		Does		Bucks		Does		
						Adult	Fawn	Adult	Fawn	Adult	Fawn	Adult	Fawn	
2014	Resident	82	17	7%	1%	1	0	0	0	0	0	0	0	1
	Nonresident	15	6	40%	15%	0	0	1	1	0	0	0	0	2
2015	Resident	95	23	26%	6%	2	0	4	0	0	0	0	0	6
	Nonresident	22	12	11%	6%	1	0	0	0	0	0	0	0	1
2016	Resident	118	30	14%	4%	1	0	1	1	0	0	0	0	4
	Nonresident	28	4	33%	5%	0	0	1	0	0	0	0	0	1
2017	Resident	113	29	17%	4%	2	0	2	0	0	0	0	0	5
	Nonresident	47	9	38%	7%	3	0	0	0	0	0	0	0	3
2018	Resident	142	30	9%	2%	1	0	1	0	0	0	0	0	3
	Nonresident	59	4	0%	0%	0	0	0	0	0	0	0	0	0
2019	Resident	103	34	13%	4%	1	0	1	1	0	0	0	0	4
	Nonresident	41	3	0%	0%	0	0	0	0	0	0	0	0	0
2020	Resident	96	30	18%	5%	2	0	3	0	0	0	0	0	5
	Nonresident	5	3	0%	0%	0	0	0	0	0	0	0	0	0

Brule County certain GPA/Corps (13L)

Year		Permits Issued	Projected Hunted	Hunter Success	Permit Success	Harvest Projections								Total Deer Harvest
						Whitetail				Mule Deer				
						Bucks		Does		Bucks		Does		
						Adult	Fawn	Adult	Fawn	Adult	Fawn	Adult	Fawn	
2017	Resident	112	15	17%	2%	0	0	0	0	2	0	0	0	2
	Nonresident	44	0		0%	0	0	0	0	0	0	0	0	0
2018	Resident	181	24	6%	1%	0	0	1	0	0	0	0	0	1
	Nonresident	66	14	0%	0%	0	0	0	0	0	0	0	0	0
2019	Resident	155	38	8%	2%	3	0	0	0	0	0	0	0	3
	Nonresident	54	5	0%	0%	0	0	0	0	0	0	0	0	0
2020	Resident	149	37	9%	2%	3	0	0	0	0	0	0	0	3
	Nonresident	13	4	50%	17%	2	0	0	0	0	0	0	0	2

Black Hills Unit (BH1)

Year		Permits Issued	Projected Hunted	Hunter Success	Permit Success	Harvest Projections								Total Deer Harvest
						Whitetail				Mule Deer				
						Bucks		Does		Bucks		Does		
						Adult	Fawn	Adult	Fawn	Adult	Fawn	Adult	Fawn	
2016*	Resident	NA	NA	NA	NA	384	31	215	11	83	0	15	5	744
	Nonresident	NA	NA	NA	NA	76	4	39	3	49	0	7	0	177
2017*	Resident	NA	NA	NA	NA	440	12	248	17	82	0	22	0	822
	Nonresident	NA	NA	NA	NA	101	3	51	3	34	0	13	0	203
2018	Resident	2,182	1,338	34%	21%	235	13	138	8	58	0	7	0	459
	Nonresident	277	125	37%	17%	37	0	1	0	4	0	3	0	46
2019	Resident	1,419	913	29%	19%	140	13	90	6	15	0	3	1	268
	Nonresident	160	66	46%	19%	15	0	9	0	7	0	0	0	30
2020	Resident	1,171	733	45%	28%	166	5	117	6	27	0	6	0	328
	Nonresident	74	33	74%	33%	10	0	10	0	2	0	2	0	24

*Prior to 2018 harvest numbers are from the regular archery survey

APPROVE _____ MODIFY _____ REJECT _____ NO ACTION _____

Access Permit Muzzleloader Deer Harvest Projections

Custer National Forest (35L)

Year	Permits Issued		Sold	Projected Hunted	Hunter Success	Permit Success	Harvest Projections								Total Deer Harvest
							Whitetail				Mule Deer				
	Resident	Nonresident					Bucks	Does	Bucks	Does	Bucks	Does	Bucks	Does	
2014	27	0	27	14	25%	13%	0	0	0	0	4	0	0	0	4
2015	57	0	57	24	25%	11%	0	0	0	0	6	0	0	0	6
2016	58	0	58	26	32%	14%	1	0	1	0	6	0	0	0	8
2017	70	0	70	34	23%	11%	2	0	0	0	6	0	0	0	8
2018	72	0	72	40	19%	10%	0	0	0	0	7	0	0	0	7
2019	100	0	100	40	39%	15%	1	0	0	0	13	0	1	0	15
2020	141	0	141	60	41%	17%	3	0	0	0	22	0	0	0	25

Hill Ranch GPA (27L)

Year	Permits Issued		Sold	Projected Hunted	Hunter Success	Permit Success	Harvest Projections								Total Deer Harvest
							Whitetail				Mule Deer				
	Resident	Nonresident					Bucks	Does	Bucks	Does	Bucks	Does	Bucks	Does	
2014	19	0	19	7	33%	12%	0	0	0	0	1	0	1	0	2
2015	31	0	31	10	0%	0%	0	0	0	0	0	0	0	0	0
2016	38	0	38	15	23%	9%	4	0	0	0	0	0	0	0	4
2017	38	0	38	10	20%	5%	1	0	0	0	1	0	0	0	2
2018	17	0	17	4	0%	0%	0	0	0	0	0	0	0	0	0
2019	18	0	18	5	25%	7%	1	0	0	0	0	0	0	0	1
2020	44	0	44	8	17%	3%	0	0	0	1	0	0	0	0	1

Little Moreau GPA (24B)

Year	Permits Issued		Sold	Projected Hunted	Hunter Success	Permit Success	Harvest Projections								Total Deer Harvest
							Whitetail				Mule Deer				
	Resident	Nonresident					Bucks	Does	Bucks	Does	Bucks	Does	Bucks	Does	
2014	27	3	30	12	18%	7%	0	0	2	0	0	0	0	0	2
2015	43	2	45	18	25%	10%	0	2	2	0	0	0	0	0	4
2016	54	9	63	16	43%	11%	1	1	3	1	0	0	0	0	7
2017	42	9	51	22	32%	16%	0	0	7	0	0	1	0	0	8
2018	47	8	55	23	19%	8%	1	1	1	0	0	0	0	0	4
2019	36	5	41	11	43%	12%	0	2	2	2	0	0	0	0	5
2020	31	2	33	8	50%	12%	1	1	1	0	0	0	0	0	4

Brule County certain GPA/Corps (13L)

Year	Permits Issued		Sold	Projected Hunted	Hunter Success	Permit Success	Harvest Projections								Total Deer Harvest
							Whitetail				Mule Deer				
	Resident	Nonresident					Bucks	Does	Bucks	Does	Bucks	Does	Bucks	Does	
2017	32	0	32	2	50%	3%	0	0	0	1	0	0	0	0	1
2018	20	0	20	4	0%	0%	0	0	0	0	0	0	0	0	0
2019	22	0	22	6	25%	6%	0	0	0	0	0	0	1	0	1
2020	44	0	44	5	0%	0%	0	0	0	0	0	0	0	0	0

Black Hills Unit Harvest

Year	Permits Issued		Sold	Projected Hunted	Hunter Success	Permit Success	Harvest Projections								Total Deer Harvest
							Whitetail				Mule Deer				
	Resident	Nonresident					Bucks	Does	Bucks	Does	Bucks	Does	Bucks	Does	
2014	NA	NA	NA	NA	NA	NA	24	0	16	3	12	0	0	0	54
2015	NA	NA	NA	NA	NA	NA	17	0	5	3	16	0	3	0	44
2016	NA	NA	NA	NA	NA	NA	38	28	174	27	8	1	0	0	275
2017	NA	NA	NA	NA	NA	NA	32	20	250	30	14	0	1	0	346
2018	NA	NA	NA	NA	NA	NA	17	23	259	24	16	0	0	0	339
2019	NA	NA	NA	NA	NA	NA	20	14	172	9	8	0	2	0	226
2020	NA	NA	NA	NA	NA	NA	18	28	169	14	11	1	0	0	241

APPROVE _____ MODIFY _____ REJECT _____ NO ACTION _____

Access Permit Youth/Apprentice Deer Harvest Projections

Custer National Forest (35L)

Year	Permits Issued		Sold	Projected Hunted	Hunter Success	Permit Success	Harvest Projections								Total Deer Harvest
	Resident	Nonresident					Whitetail				Mule Deer				
							Bucks		Does		Bucks		Does		
	Adult	Fawn					Adult	Fawn	Adult	Fawn	Adult	Fawn			
2014	20	6	26	9	25%	9%	0	0	0	0	2	0	0	2	
2015	15	2	17	5	25%	8%	0	0	0	0	0	1	0	1	
2016	28	4	32	6	75%	13%	0	0	0	0	3	1	0	4	
2017	19	4	23	10	44%	20%	0	1	0	1	2	0	0	5	
2018	27	9	36	10	38%	10%	0	0	0	1	2	0	0	4	
2019	20	7	27	11	67%	26%	0	0	0	0	4	4	0	7	
2020	23	10	33	8	60%	15%	0	2	0	0	2	2	0	5	

Hill Ranch GPA (27L)

Year	Permits Issued		Sold	Projected Hunted	Hunter Success	Permit Success	Harvest Projections								Total Deer Harvest
	Resident	Nonresident					Whitetail				Mule Deer				
							Bucks		Does		Bucks		Does		
	Adult	Fawn					Adult	Fawn	Adult	Fawn	Adult	Fawn			
2014	17	6	23	12	29%	15%	0	2	2	0	0	0	0	4	
2015	10	2	12	5	25%	10%	1	0	0	0	0	0	0	1	
2016	17	2	19	5	0%	0%	0	0	0	0	0	0	0	0	
2017	11	1	12	7	40%	22%	0	0	1	1	0	0	0	3	
2018	24	0	24	4	0%	0%	0	0	0	0	0	0	0	0	
2019	14	2	16	6	40%	15%	0	1	1	0	0	0	0	2	
2020	18	1	19	4	50%	10%	0	2	0	0	0	0	0	2	

Little Moreau GPA (24B)

Year	Permits Issued		Sold	Projected Hunted	Hunter Success	Permit Success	Harvest Projections								Total Deer Harvest
	Resident	Nonresident					Whitetail				Mule Deer				
							Bucks		Does		Bucks		Does		
	Adult	Fawn					Adult	Fawn	Adult	Fawn	Adult	Fawn			
2014	13	3	16	5	0%	0%	0	0	0	0	0	0	0	0	
2015	7	3	10	4	67%	25%	0	3	0	0	0	0	0	3	
2016	16	1	17	9	38%	20%	1	1	0	0	0	1	0	3	
2017	7	3	10	6	33%	20%	0	2	0	0	0	0	0	2	
2018	17	2	19	6	17%	6%	0	1	0	0	0	0	0	1	
2019	6	1	7	5	33%	25%	2	0	0	0	0	0	0	2	
2020	8	1	9	3	100%	33%	3	0	0	0	0	0	0	3	

Brule County certain GPA/Corps (13L)

Year	Permits Issued		Sold	Projected Hunted	Hunter Success	Permit Success	Harvest Projections								Total Deer Harvest
	Resident	Nonresident					Whitetail				Mule Deer				
							Bucks		Does		Bucks		Does		
	Adult	Fawn					Adult	Fawn	Adult	Fawn	Adult	Fawn			
2017	12	0	12	4	50%	18%	0	1	0	1	0	0	0	2	
2018	24	0	24	1	0%	0%	0	0	0	0	0	0	0	0	
2019	14	1	15	5	0%	0%	0	0	0	0	0	0	0	0	
2020	20	1	21	5	50%	11%	0	2	0	0	0	0	0	2	

Black Hills Unit Harvest

Year	Permits Issued		Sold	Projected Hunted	Hunter Success	Permit Success	Harvest Projections								Total Deer Harvest
	Resident	Nonresident					Whitetail				Mule Deer				
							Bucks		Does		Bucks		Does		
	Adult	Fawn					Adult	Fawn	Adult	Fawn	Adult	Fawn			
2014	NA	NA	NA	NA	NA	NA	25	174	18	0	32	0	0	250	
2015	NA	NA	NA	NA	NA	NA	29	204	34	4	38	2	0	311	
2016	NA	NA	NA	NA	NA	NA	37	289	26	3	33	4	0	392	
2017	NA	NA	NA	NA	NA	NA	28	273	35	3	47	1	0	388	
2018	NA	NA	NA	NA	NA	NA	21	297	23	5	35	8	0	389	
2019	NA	NA	NA	NA	NA	NA	30	192	22	3	28	0	0	275	
2020	NA	NA	NA	NA	NA	NA	25	288	31	0	51	2	0	397	

APPROVE _____ MODIFY _____ REJECT _____ NO ACTION _____

Access Permit Mentored Youth Deer Harvest Projections

Custer National Forest (35L)

Year	Permits Issued		Sold	Projected Hunted	Hunter Success	Permit Success	Harvest Projections								Total Deer Harvest
	Resident	Nonresident					Whitetail				Mule Deer				
							Bucks		Does		Bucks		Does		
	Adult	Fawn					Adult	Fawn	Adult	Fawn	Adult	Fawn			
2014	11	0	11	4	67%	25%	0	0	0	0	0	3	0	3	
2015	10	0	10	3	50%	17%	0	0	2	0	0	0	0	2	
2016	23	0	23	3	50%	6%	0	0	0	0	1	0	0	1	
2017	14	0	14	1	0%	0%	0	0	0	0	0	0	0	0	
2018	30	0	30	4	0%	0%	0	0	0	0	0	0	0	0	
2019	37	0	37	4	0%	0%	0	0	0	0	0	0	0	0	
2020	17	0	17	3	33%	6%	0	0	0	0	1	0	0	1	

Hill Ranch GPA (27L)

Year	Permits Issued		Sold	Projected Hunted	Hunter Success	Permit Success	Harvest Projections								Total Deer Harvest
	Resident	Nonresident					Whitetail				Mule Deer				
							Bucks		Does		Bucks		Does		
	Adult	Fawn					Adult	Fawn	Adult	Fawn	Adult	Fawn			
2014	7	0	7	1	0%	0%	0	0	0	0	0	0	0	0	
2015	7	0	7	2	50%	14%	0	0	0	1	0	0	0	1	
2016	11	0	11	3	50%	14%	0	2	0	0	0	0	0	2	
2017	6	0	6	2	100%	33%	1	1	0	0	0	0	0	2	
2018	18	0	18	6	100%	31%	1	4	0	0	0	0	0	6	
2019	25	0	25	11	13%	6%	0	0	0	0	1	0	0	1	
2020	21	0	21	6	100%	31%	0	6	0	0	0	0	0	6	

Little Moreau GPA (24B)

Year	Permits Issued		Sold	Projected Hunted	Hunter Success	Permit Success	Harvest Projections								Total Deer Harvest
	Resident	Nonresident					Whitetail				Mule Deer				
							Bucks		Does		Bucks		Does		
	Adult	Fawn					Adult	Fawn	Adult	Fawn	Adult	Fawn			
2014	5	0	5	3	100%	50%	0	1	1	0	0	0	0	3	
2015	3	0	3	2	50%	33%	1	0	0	0	0	0	0	1	
2016	7	0	7	0	0%	0%	0	0	0	0	0	0	0	0	
2017	7	0	7	1	0%	0%	0	0	0	0	0	0	0	0	
2018	6	0	6	0	0%	0%	0	0	0	0	0	0	0	0	
2019	8	0	8	0	0%	0%	0	0	0	0	0	0	0	0	
2020	5	0	5	3	0%	0%	0	0	0	0	0	0	0	0	

Brule County certain GPA/Corps (13L)

Year	Permits Issued		Sold	Projected Hunted	Hunter Success	Permit Success	Harvest Projections								Total Deer Harvest
	Resident	Nonresident					Whitetail				Mule Deer				
							Bucks		Does		Bucks		Does		
	Adult	Fawn					Adult	Fawn	Adult	Fawn	Adult	Fawn			
2017	9	0	9	3	0%	0%	0	0	0	0	0	0	0	0	
2018	25	0	25	6	40%	9%	0	1	0	0	0	1	0	2	
2019	25	0	25	6	25%	6%	0	0	0	1	0	0	0	1	
2020	15	0	15	1	0%	0%	0	0	0	0	0	0	0	0	

Black Hills Unit Harvest

Year	Permits Issued		Sold	Projected Hunted	Hunter Success	Permit Success	Harvest Projections								Total Deer Harvest
	Resident	Nonresident					Whitetail				Mule Deer				
							Bucks		Does		Bucks		Does		
	Adult	Fawn					Adult	Fawn	Adult	Fawn	Adult	Fawn			
2014	NA	NA	NA	NA	NA	NA	15	106	38	1	20	6	187		
2015	NA	NA	NA	NA	NA	NA	12	129	21	1	25	0	188		
2016	NA	NA	NA	NA	NA	NA	32	149	23	4	21	1	230		
2017	NA	NA	NA	NA	NA	NA	29	195	27	4	38	4	297		
2018	NA	NA	NA	NA	NA	NA	26	240	34	2	24	0	326		
2019	NA	NA	NA	NA	NA	NA	31	200	34	2	25	1	293		
2020	NA	NA	NA	NA	NA	NA	31	236	48	6	17	0	338		

APPROVE _____

MODIFY _____

REJECT _____

NO ACTION _____

DRAFT ADMINISTRATIVE RULE CHANGES

The following are proposed draft changes that are intended to incorporate the recommended changes adopted by the Commission.

41:06:01:17. Access permits required for specific deer hunting units and public lands. Any resident or nonresident deer hunter possessing an archery, muzzleloader, apprentice hunter, youth, or mentor deer license shall obtain and possess a free limited access permit to hunt certain hunting units or public lands described in § 41:06:22:01. West River deer units 24B, 27L, 35L, and East River deer unit 13L. ~~Any resident or nonresident deer hunter possessing an archery deer license shall obtain and possess a free access permit in order to hunt Newton Hills State Park or in the Black Hills as defined in § 41:06:19:02. Unlimited access permits may be issued for each management unit and each free access permit shall be unit specific.~~

41:06:22:01. Archery deer hunting season established -- Number and type of licenses -- Access permits. The archery deer hunting season is open statewide from one-half hour before sunrise to one-half hour after sunset each day beginning September 1 through January 1, except as otherwise provided in § 41:06:22:02. Unlimited "any deer" licenses may be issued for units ARD-ST1, ARD-ER1, and ARD-WR1 and unlimited antlerless whitetail deer licenses may be issued for unit ARD-LM1. One thousand single-tag "any antlerless deer" licenses may be issued for use in ARD-MP1, ARD-MP2 and ARD-MP3. No more than ten "any deer" and 50 antlerless whitetail deer access permits may be issued to residents for Adams Homestead and Nature Preserve. No more than ten "any deer" and 25 "antlerless whitetail deer" access permits may be issued to residents for Good Earth State Park. No more than 500 "any deer" access permits may be issued to residents and no more than 125 "any deer" access permits may be issued to nonresidents for unit WRD-35L described in § 41:06:20:02. No more than 20 "any deer" access permits may be issued to residents and no more than 5 "any deer" access permits may be issued to nonresidents for unit WRD-27L described in § 41:06:20:02.

RESIDENT/NONRESIDENT CRITERIA

1. The Issue
 - Unlimited access permits were originally used to monitor deer hunter numbers and success on specific management units. Adequate data have been obtained to evaluate hunter numbers and harvest on these areas, and future monitoring can be obtained via harvest estimates and success without the need for unlimited access permits.
2. Historical Considerations
 - Data regarding unlimited access permit use and harvest success were evaluated in 2019 and changes were made to limit archery hunters in deer management unit 35L.
3. Biological Considerations
 - Harvest estimates at the firearm deer management unit will continue to be estimated by deer hunters with statewide and region-wide license types and these data are used to evaluate biological impact of harvest to the deer population.
4. Social Considerations
 - Hunter density and harvest by hunters with statewide and region-wide license types will continue to be monitored to estimate and evaluate social considerations, such as perceived hunter density and crowding.
5. Financial considerations
 - Access permits are available at no cost, so there is no financial consideration.

RECRUITMENT, RETENTION, REACTIVATION (R3) CRITERIA

1. Does the regulation or fee inhibit a user's ability to participate? No.
2. Does the regulation increase the opportunity for new and existing users?
 - No, the access permits were free and unlimited, so the removal of these permits will have no effect on opportunity.
3. How does the regulation impact the next generation of hunters, anglers, trappers, and outdoor recreationists?
 - The regulation will simplify hunting requirements for deer hunter license types including archery, muzzleloader, mentor, youth, and apprentice.
4. Does the regulation enhance the quality of life for current and future generations by getting families outdoors? Not applicable.

FISCAL IMPACT

No fiscal impact as all access permits are issued free of charge.

APPROVE _____

MODIFY _____

REJECT _____

NO ACTION _____

GAME, FISH AND PARKS COMMISSION ACTION FINALIZATION

License Forms and Fees Chapters 41:06:02

Commission Meeting Dates:	Proposal	March 3-4, 2022	Pierre
	Public Hearing	May 5, 2022	Custer State Park
	Finalization	May 5-6, 2022	Custer State Park

COMMISSION PROPOSAL

Duration of Proposal: Beginning with the 2022 season.

Proposed changes from last year:

1. Remove the inclusion of the state migratory bird certification permit with the nonresident spring snow goose, nonresident early fall Canada goose licenses, nonresident 3-day licenses, nonresident youth waterfowl licenses and decrease applicable license fees by \$5 each.

SUPPORTIVE INFORMATION

Currently, several nonresident waterfowl licenses include the migratory bird certification permit. With the 2-tiered duck license option, applicants must select a migratory bird certification permit to reflect their choice of the traditional or 3-duck license option and pay the \$5 fee for the applicable migratory bird certification permit.

DEPARTMENT RECOMMENDATION

Recommended changes from proposal: None.

DRAFT ADMINISTRATIVE RULE CHANGES

The following are proposed draft changes that are intended to incorporate the recommended changes adopted by the Commission.

41:06:02:03. Hunting license fees. Hunting license fees are as follows:

- (29) Special nonresident waterfowl license, \$110;
- (30) Fall three-consecutive days temporary nonresident waterfowl license, ~~\$80~~ \$75;
- (31) Spring snow goose temporary nonresident license:
 - (A) Eighteen years of age and older, ~~\$44~~ \$39; and
 - (B) Under 18 years of age, ~~\$20~~ \$15;
- (32) Early fall Canada goose temporary nonresident license, ~~\$44~~ \$39;
- (33) Nonresident youth waterfowl season hunting license under 18 years of age, ~~ten~~ five dollars;

RESIDENT/NONRESIDENT CRITERIA

1. The Issue
 - Why make the change, what are the change alternatives, how will public/stakeholder input be solicited, and how will the change be evaluated if implemented?
 - i. With the 2-tiered duck license option, applicants must select a migratory bird certification permit to reflect their choice of the traditional or 3-duck license option and pay the \$5 fee for the applicable migratory bird certification permit.
2. Historical Considerations
 - Not applicable.
3. Biological Considerations
 - What is the current and projected status of the population and habitat conditions for these populations? Not applicable.

APPROVE _____ MODIFY _____ REJECT _____ NO ACTION _____

4. Social Considerations
 - Simplifies application and license purchase process.
5. Financial considerations
 - Not applicable.

RECRUITMENT, RETENTION, REACTIVATION (R3) CRITERIA

1. Does the regulation or fee inhibit a user's ability to participate? No.
2. Does the regulation increase the opportunity for new and existing users? Yes, simplifies application and license purchase process.
3. How does the regulation impact the next generation of hunters, anglers, trappers, and outdoor recreationists? Simplifies application and license purchase process.
4. Does the regulation enhance the quality of life for current and future generations by getting families outdoors? Not applicable.

FISCAL IMPACT

No fiscal impact to license revenue as the license requirements are simply being separated to simplify and accurately reflect the license choice of the applicant.

APPROVE _____ **MODIFY** _____ **REJECT** _____ **NO ACTION** _____

GAME, FISH AND PARKS COMMISSION ACTION FINALIZATION

Duck Hunting Season Chapter 41:06:16

Commission Meeting Dates:	Proposal	March 3-4, 2022	Pierre
	Public Hearing	May 5, 2022	Custer State Park
	Finalization	May 5-6, 2022	Custer State Park

COMMISSION PROPOSAL

Duration of Proposal: 2022-23 hunting season

Season Dates and Open Areas:

High Plains Zone:	October 8, 2022 – January 12, 2023
Low Plains North & Low Plains Middle Zone:	September 24 – December 6, 2022
Low Plains South Zone:	October 22, 2022 – January 3, 2023

Daily Limits:

Tier 1 Option (Traditional Daily Bag Limit)

- Ducks: 6 The duck daily limit (including mergansers) may be comprised of no more than: 5 mallards (which may include no more than 2 hens), 3 wood ducks, 2 redheads, 2 canvasbacks, 1 pintail and 1 scaup.
- 2 Bonus blue-winged teal (first 16 days of the season only)
- Low Plains North & Low Plains Middle Zones: September 24 – October 9, 2022
- Low Plains South Zone: October 22 – November 6, 2022
- High Plains Zone: October 8 – 23, 2022

Coots: 15

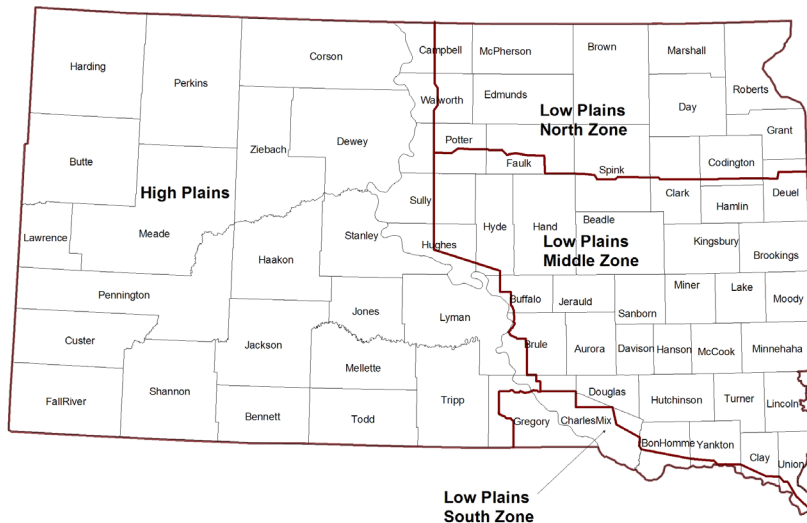
Tier 2 Option (3-Splash Daily Bag Limit)

Ducks: 3 The duck daily limit (including mergansers) may be comprised of three of any species or gender.

Coots: 15

Possession Limits: Three times the daily bag limits.

Duck Hunting Zones



APPROVE _____	MODIFY _____	REJECT _____	NO ACTION _____
----------------------	---------------------	---------------------	------------------------

Proposed changes from last year:

1. Remove daily bag limit of 5 mergansers (including 2 hooded mergansers) and include all mergansers in the normal duck daily bag limit.
2. Remove the possession limit of mergansers and include all mergansers in the normal duck possession limit.
3. Remove the ability to transfer certain nonresident licenses after a specific date.

SUPPORTIVE INFORMATION

The proposed change cleans up administrative rules for the implementation of the experimental options available to duck hunters. The allowance to transfer certain nonresident licenses after a specific date is unnecessarily complex and creates difficulties with the administration of licenses as well as creates confusion with hunters.

Year	Resident Hunters	Nonresident Hunters	Ducks Harvested
2016	10,533	3,823	185,105
2017	10,557	4,159	189,320
2018	10,271	4,051	175,822
2019	11,295	4,423	229,110
2020	12,285	4,274	241,684

DEPARTMENT RECOMMENDATION

Recommended changes from proposal: None.

DRAFT ADMINISTRATIVE RULE CHANGES

The following are proposed draft changes that are intended to incorporate the recommended changes adopted by the Commission.

41:06:16:03. Daily bag limit. The daily bag limit is six ducks or mergansers, unless the person chooses the second-tier option at which the daily bag limit is an aggregate of three ducks or mergansers of any species or gender. The total daily limit of six ducks (including mergansers) may include no more than two redheads, one scaup, three wood ducks, one pintail, two canvasback, and five mallards, of which no more than two may be hen mallards.

During the first 16 days of the season an additional two blue-winged teal may be harvested in addition to the daily bag limit.

~~For the first tier option, the daily bag limit for mergansers is five, of which no more than two may be hooded mergansers.~~

The daily bag limit for coot is 15.

41:06:16:05. Possession limit. The possession limit for ducks (including mergansers) is three times the daily bag limit for each species.

~~A person may possess at any time no more than fifteen mergansers, of which no more than six may be hooded mergansers.~~

A person may possess at any one time no more than 45 coot taken according to the daily bag limit.

APPROVE _____	MODIFY _____	REJECT _____	NO ACTION _____
---------------	--------------	--------------	-----------------

41:06:16:11.01. Nonresident waterfowl license purchase restrictions -- Unsold licenses and unit transfer dates. A person may purchase only one nonresident waterfowl license for the fall-winter general waterfowl season each year; however, if licenses remain unsold after October 31, an unlimited number of nonresident waterfowl licenses may be purchased on a first-come, first-served basis. ~~After October 31, any unsold licenses in Units NRW-00A or NRW-11A may be transferred to Unit NRW-00B. After November 15, any unsold licenses in Unit NRW-00Y may be transferred to Unit NRW-00X with the same provisions as Unit NRW-00X licenses.~~

RESIDENT/NONRESIDENT CRITERIA

1. The Issue
 - Simplification of hunting regulations is a priority for GFP. Over the years for a variety of reasons, unnecessary levels of complexity have developed in duck harvest regulations. This recommended change will reduce regulatory complexity for hunters and have little impact on the resource.
2. Historical Considerations – In the past the U.S. Fish and Wildlife Service (USFWS) allowed a separate bag limit of 5 for mergansers (including 2 hooded mergansers). In 2021, the Central Flyway Council proposed eliminating this additional bag limit for mergansers in the spirit of reducing regulatory complexity and the USFWS agreed.
3. Biological Considerations
 - None
4. Social Considerations
 - Merganser harvest is extremely low in South Dakota, this regulation change reduces complexity and aids in compliance.
5. Financial considerations
 - None

RECRUITMENT, RETENTION, REACTIVATION (R3) CRITERIA

1. Does the regulation or fee inhibit a user's ability to participate? No
2. Does the regulation increase the opportunity for new and existing users? No
3. How does the regulation impact the next generation of hunters, anglers, trappers and outdoor recreationists?
 - The goal of this change is reduction of regulatory complexity.
4. Does the regulation enhance the quality of life for current and future generations by getting families outdoors?
 - Reducing regulatory complexity generally aids in participation and compliance.

FISCAL IMPACT

Not applicable.

APPROVE _____ **MODIFY** _____ **REJECT** _____ **NO ACTION** _____

GAME, FISH AND PARKS COMMISSION ACTION FINALIZATION

Early Fall Canada Goose Chapters 41:06:50

Commission Meeting Dates:	Proposal March 3-4, 2022 Public Hearing May 5, 2022 Finalization May 5-6, 2022	Pierre Custer State Park Custer State Park
----------------------------------	--	---

COMMISSION PROPOSAL

Duration of Proposal: 2022 hunting season

Season Dates: September 1 - 30, 2022 **Open Area:** Unit 1 (see map below)

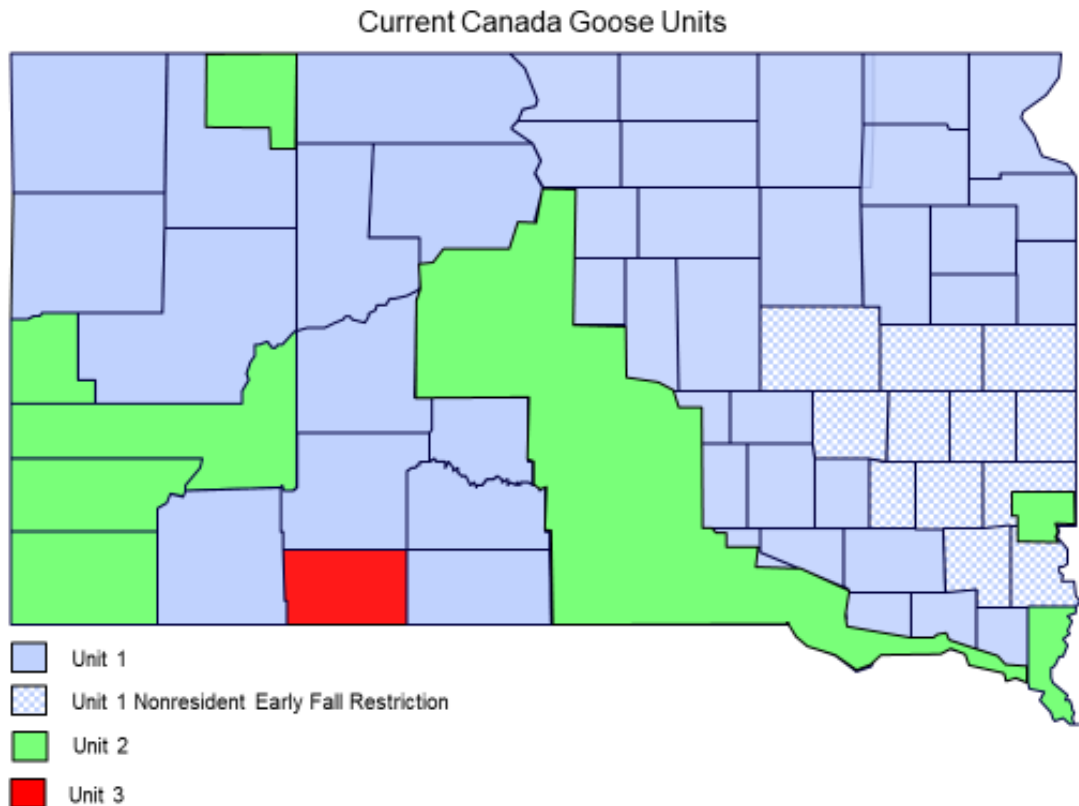
Daily Limit: 15 Canada Geese **Possession Limit:** 45 Canada Geese

Requirements and Restrictions:

1. Shooting hours are one-half hour before sunrise to sunset.

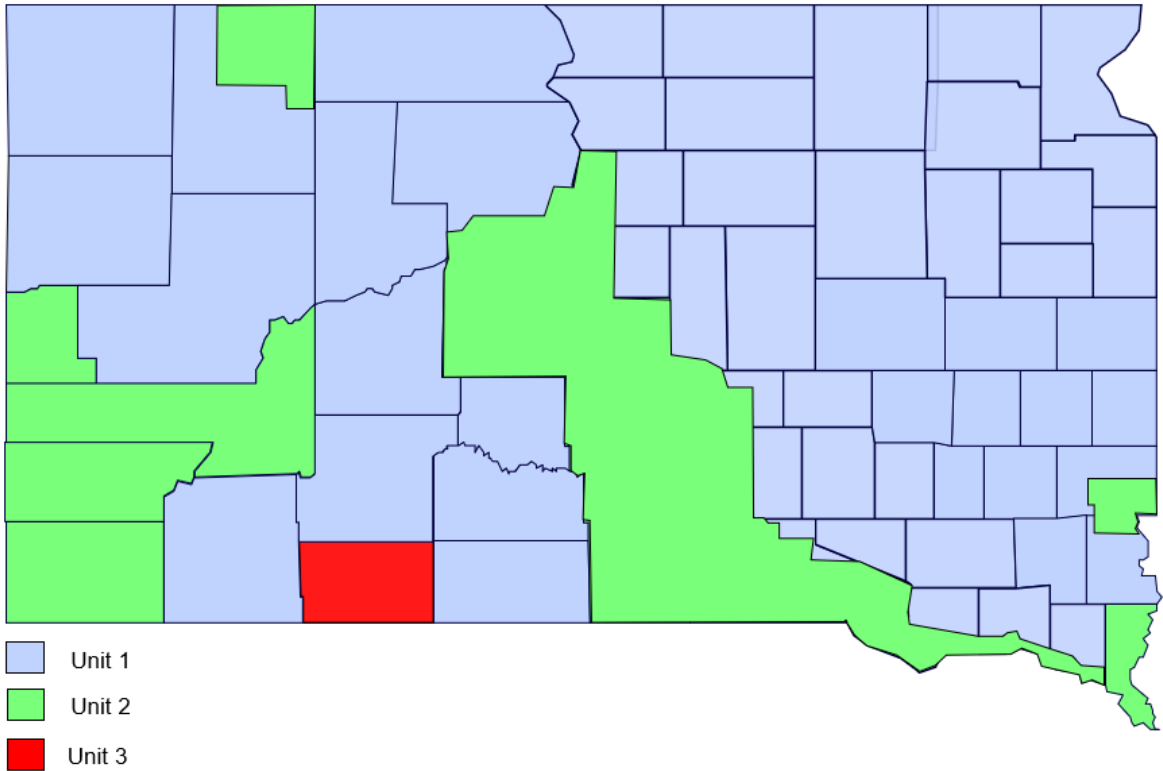
Proposed changes from last year:

1. Remove restriction for nonresident hunters in the counties of Beadle, Brookings, Hanson, Kingsbury, Lake, Lincoln, McCook, Miner, Moody, Sanborn, Turner, Union, and Minnehaha counties.



APPROVE _____ **MODIFY** _____ **REJECT** _____ **NO ACTION** _____

Recommended Canada Goose Units



SUPPORTIVE INFORMATION

Year	Resident Hunters	Nonresident Hunters	Total Hunters	Geese Harvested	Average Season Bag
2016	3,152	275	3,366	20,735	8.2
2017	2,997	213	3,226	27,660	8.0
2018	2,507	229	2,716	25,808	6.6
2019	2,777	207	3,000	17,904	7.0
2020	3,450	408	3,858	21,054	8.8

Year	Nonresident Hunters
2012	526
2013	373
2014	396
2015	327
2016	236
2017	252
2018	229
2019	242
2020	464

APPROVE _____ MODIFY _____ REJECT _____ NO ACTION _____

DEPARTMENT RECOMMENDATION

Recommended changes from proposal: None.

DRAFT ADMINISTRATIVE RULE CHANGES

The following are proposed draft changes that are intended to incorporate the recommended changes adopted by the Commission.

~~41:06:50:04. Eligibility requirements and restrictions. Nonresidents may not hunt early fall Canada goose in the counties of Beadle, Brookings, Hanson, Kingsbury, Lake, Lincoln, McCook, Miner, Moody, Sanborn, Turner, Union, and Minnehaha.~~

RESIDENT/NONRESIDENT CRITERIA

1. The Issue –Very few nonresident hunters take advantage of the current areas open to nonresident Early Fall Canada goose hunting. This proposal will reduce unnecessary regulatory complexity, increase goose hunting opportunity for some nonresidents, and perhaps increase goose harvest in southeastern South Dakota.
2. Historical Considerations – Not applicable
3. Biological Considerations – It is a priority of the Department to increase harvest rates on locally breeding Canada geese. This restriction is not biologically needed and runs contrary to management objectives.
4. Social Considerations – As with all nonresident opportunity in South Dakota there is a perception that any increase in nonresident opportunity will take away opportunity for residents.
5. Financial considerations – There could potentially be a small financial gain for the department through the sale of additional nonresident licenses for this season.

RECRUITMENT, RETENTION, REACTIVATION (R3) CRITERIA

1. Does the regulation or fee inhibit a user’s ability to participate? No
2. Does the regulation increase the opportunity for new and existing users? Yes
3. How does the regulation impact the next generation of hunters, anglers, trappers and outdoor recreationists?
 - Provides some additional opportunity for nonresidents to hunt Canada geese in South Dakota.
4. Does the regulation enhance the quality of life for current and future generations by getting families outdoors? Unknown

FISCAL IMPACT

No fiscal impacted expected.

APPROVE _____	MODIFY _____	REJECT _____	NO ACTION _____
---------------	--------------	--------------	-----------------

GAME, FISH AND PARKS COMMISSION ACTION FINALIZATION

Public Waters/Fishing Seasons Chapter 41:04:02 and 41:07:02

Commission Meeting Dates:	Proposal	March 3-4, 2002	Pierre
	Public Hearing	May 5, 2022	Custer State Park
	Finalization	May 5-6, 2022	Custer State Park

COMMISSION PROPOSAL

Proposed changes from last year:

1. Modify applicable dates and the area included in "no discharge of a firearm from a boat" of Indian Springs and Antelope Lakes in Clark County.
2. Modify applicable dates and the area included in the closure of fishing from a boat of Indian Springs and Antelope Lakes in Clark County.

SUPPORTIVE INFORMATION

In 2017, HB1001 tasked the SD Game Fish and Parks to work on agreements with landowners on non-meandered water issues. One such agreement was with a landowner on Indian Springs Lake in Clark County. The current rule was put into place in 2018 after discussions with a landowner who owned most of the flooded private property in the Indian Springs basin. It was the opportunity to balance the request of the landowner and the public recreational use of Indian Springs Lake.

Landownership has changed hands since the original agreement. Due to water levels increasing in the area, the new landowner has requested to simplify the boundaries of the current area closed to "discharging a firearm or fishing from a boat" on Indian Springs to also include the waters of Antelope Lake. Antelope Lake is currently designated as a State Waterfowl Refuge. As part of this request, the landowner also agreed to change the start date in the current rules 41:04:02:12b and 41:07:02:01b to October 20th, giving sportsmen and women an additional 10 days in the fall to hunt and fish from a boat while allowing the water to be open to public recreational use during the winter, spring, and summer months. This date would also align with boating regulations on other state refuges.

Indian Springs Lake is a non-meandered body of water thus is subject to landowner request to close it to recreational use if so desires. By GFP staff working with the current landowners, Indian Springs Lake can remain open to public recreational activities with minimal restrictions for 2 months vs being shut down year-round.

DEPARTMENT RECOMMENDATION

Recommended changes from proposal: None.

DRAFT ADMINISTRATIVE RULE CHANGES

The following are proposed draft changes that are intended to incorporate the recommended changes adopted by the Commission.

41:04:02:12. Clark County public water safety zones. The Clark County public water safety zones are as follows:

(2) The waters of Indian Springs and Antelope Lake west of a line from 42750 174th Street to 42750 177th Street to 424th avenue are designated as a "no discharge of a firearm from a boat" from October 20 through December 31.

41:07:02:01. Inland waters. Except as provided in § 41:07:01:05, all species of fish except those species listed in §§ 41:10:02:05 and 41:10:02:06 may be caught, taken, or killed by hook and line year-round within inland waters.

APPROVE _____ MODIFY _____ REJECT _____ NO ACTION _____

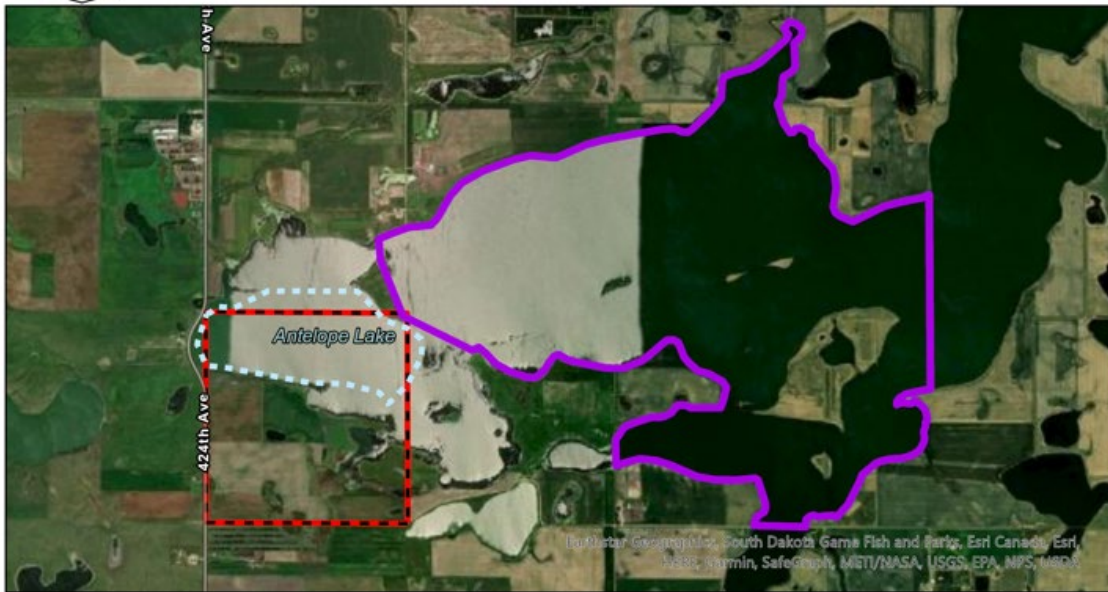
The following restrictions apply to inland waters:

(2) In Clark County the waters of Indian Springs and Antelope Lake west of a line from 42750 174th street to 42750 177th street to 424th avenue is closed to fishing from a boat from October 4⁰ 20 through December 31.



South Dakota Department of Game, Fish and Parks

Indian Springs / Antelope Lake Boundaries



Current Boundary Proposed Boundary Meandered Water Line Waterfowl Refuge

APPROVE _____ MODIFY _____ REJECT _____ NO ACTION _____

RESIDENT/NONRESIDENT CRITERIA

1. The Issue
 - None
2. Historical Considerations
 - None
3. Biological Considerations
 - None
4. Social Considerations
 - None
5. Financial considerations
 - None

RECRUITMENT, RETENTION, REACTIVATION (R3) CRITERIA

1. Does the regulation or fee inhibit a user's ability to participate?
 - Yes. It will limit the fishing from a boat and discharging of a firearm from a boat from October 20 to December 31.
2. Does the regulation increase the opportunity for new and existing users?
 - Yes. This rule would allow for an additional 10 days to fish from a boat or discharge of a firearm from a boat in the fall. It will also ensure most of Indian Springs Lake will remain open to ice, spring, and summer fishing.
3. How does the regulation impact the next generation of hunters, anglers, trappers, and outdoor recreationists?
 - Indian Springs Lake is close to communities like Clark and Watertown. Indian Springs Lake remaining open allows an excellent outdoor recreational opportunity.
4. Does the regulation enhance the quality of life for current and future generations by getting families outdoors?
 - Yes. It would allow more time for recreational use of Indian Springs Lake.

FISCAL IMPACT

Making this change and adding 10 additional fishing days on Indian Springs could have significant fiscal impact to the local businesses when the fishing is good.

APPROVE _____ **MODIFY** _____ **REJECT** _____ **NO ACTION** _____

GAME, FISH AND PARKS COMMISSION ACTION PROPOSAL

Antelope Hunting Season

Chapter 41:06:23

Commission Meeting Dates:	Proposal	May 5-6, 2022	Custer State Park
	Public Hearing	July 7, 2022	Spearfish
	Finalization	July 7-8, 2022	Spearfish

DEPARTMENT RECOMMENDATION

Duration of Recommendation: 2022 and 2023 hunting seasons

Season Dates: October 1-16, 2022
September 30 – October 15, 2023

Open Area: See the attached map

Licenses: License and tag types will be recommended at the June Commission meeting.

Requirements and Restrictions:

1. One-half of the licenses allocated in each unit are available for landowner/operator preference.
2. Landowners not possessing a license that allows the harvest of a buck may purchase an “any antelope” or a two-tag “any antelope” + “doe/fawn antelope” license that is valid on their property only.

Recommended changes from last year:

1. Adjust the maximum number of licenses available in administrative rule from no more than 4,115 to 8,000 one-tag “any antelope” licenses and from no more than 600 to 3,000 two-tag antelope licenses.
2. Add Campbell County to Unit PRA-63A (Potter and Walworth counties).

SUPPORTIVE INFORMATION

The proposed maximum number of antelope licenses will be established in administrative rule and the GFP Commission via administrative action will determine specific number of licenses by tag types and allocation amongst hunting units.

Updated population objectives and the recommended number of licenses will be shared at the June Commission meeting once preliminary aerial survey estimates have been obtained and population modeling exercises have been completed.

The addition of Campbell County to Unit PRA-63A will provide additional hunting opportunity.

Year	Licenses	Tags	Bucks	Doe/Fawn	Total	Success
	Sold	Issued	Harvested	Harvested	Harvested	
2017	5,432	5,933	2,692	1,093	3,784	64%
2018	5,539	6,078	2,845	1,000	3,845	63%
2019	5,235	6,054	2,629	1,249	3,878	64%
2020	5,279	6,101	2,415	1,272	3,687	64%
2021	5,207	6,029	2,401	1,152	3,552	59%

*Includes Landowner-Own-Land licenses.

APPROVE _____ **MODIFY** _____ **REJECT** _____ **NO ACTION** _____

DRAFT ADMINISTRATIVE RULE CHANGES

The following are proposed draft changes that are intended to incorporate the recommended changes adopted by the Commission.

41:06:23:01. Antelope hunting season established -- Number and type of licenses. The antelope hunting season is open from one-half hour before sunrise to one-half hour after sunset each day for 16 consecutive days beginning on the Saturday closest to October 1, unless prohibited in the unit descriptions in §§ 41:06:23:02. No more than ~~8,000~~ 4,115 one-tag "any antelope" licenses, no more than ~~3,000~~ 600 two-tag antelope licenses, and no more than 50 "special antelope" licenses may be issued to residents for the antelope hunting season. No more than 50 "special antelope" licenses may be issued to nonresidents for the antelope hunting season. If a person applies for a "special antelope" license, the person may not apply for another antelope license until the third lottery drawing. A successful "special antelope" applicant may not apply for a leftover "special antelope" license.

41:06:23:02. Open units -- Exceptions. The following is a description of the open units:

(28) Unit PRA-63A: Campbell, Potter and Walworth counties;

If no license is allocated for a specific hunting unit, that unit is dissolved for the purposes of designating areas open to hunting, as they pertain to the archery antelope season, and areas open to hunting under SDCL 41-6-19.3.

RESIDENT/NONRESIDENT CRITERIA

Not applicable.

RECRUITMENT, RETENTION, REACTIVATION (R3) CRITERIA

1. Does the regulation or fee inhibit a user's ability to participate? No.
2. Does the regulation increase the opportunity for new and existing users? Yes.
3. How does the regulation impact the next generation of hunters, anglers, trappers and outdoor recreationists? Provides additional hunting opportunity in Campbell County.
4. Does the regulation enhance the quality of life for current and future generations by getting families outdoors? Yes.

FISCAL IMPACT

No fiscal impact to the Department.

APPROVE _____	MODIFY _____	REJECT _____	NO ACTION _____
----------------------	---------------------	---------------------	------------------------

GAME, FISH, AND PARKS COMMISSION ACTION PROPOSAL

Archery Antelope Hunting Season

Chapter 41:06:24

Commission Meeting Dates:	Proposal	May 5-6, 2022	Custer State Park
	Public Hearing	July 7, 2022	Spearfish
	Finalization	July 7-8, 2022	Spearfish

DEPARTMENT RECOMMENDATION

Duration of Proposal: 2022 and 2023 hunting seasons

Season Dates: August 20 – October 31, 2022 (closed during firearm season)
August 19 – October 31, 2023 (closed during firearm season)

Open Area: All areas where the prairie (firearm) antelope season is open and the portions of Custer and Pennington counties within the Black Hills Fire Protection District with limited free access permits.

Licenses: Unlimited resident “any antelope” licenses.
Unlimited nonresident “any antelope” licenses.

Requirements and Restrictions:

1. A person may have only one (1) archery antelope license.
2. Shooting hours are ½ hour before sunrise to ½ hour after sunset.
3. Five (5) free access permits will be issued via lottery drawing to those licensees who possess a valid “any antelope” resident archery license for those portions of Custer and Pennington counties within the Black Hills Fire Protection District, except Custer State Park.

Proposed change from last year: None.

SUPPORTIVE INFORMATION

Year	Resident Licenses	Nonresident Licenses	Bucks Harvested	Doe/Fawn Harvested	Total Harvest	Success
2017	1,569	521	529	52	581	28%
2018	1,632	570	529	56	585	27%
2019	1,781	663	533	72	605	25%
2020	2,141	720	719	92	810	28%
2021	2,142	877	642	94	736	24%

RESIDENT/NONRESIDENT CRITERIA

Not applicable.

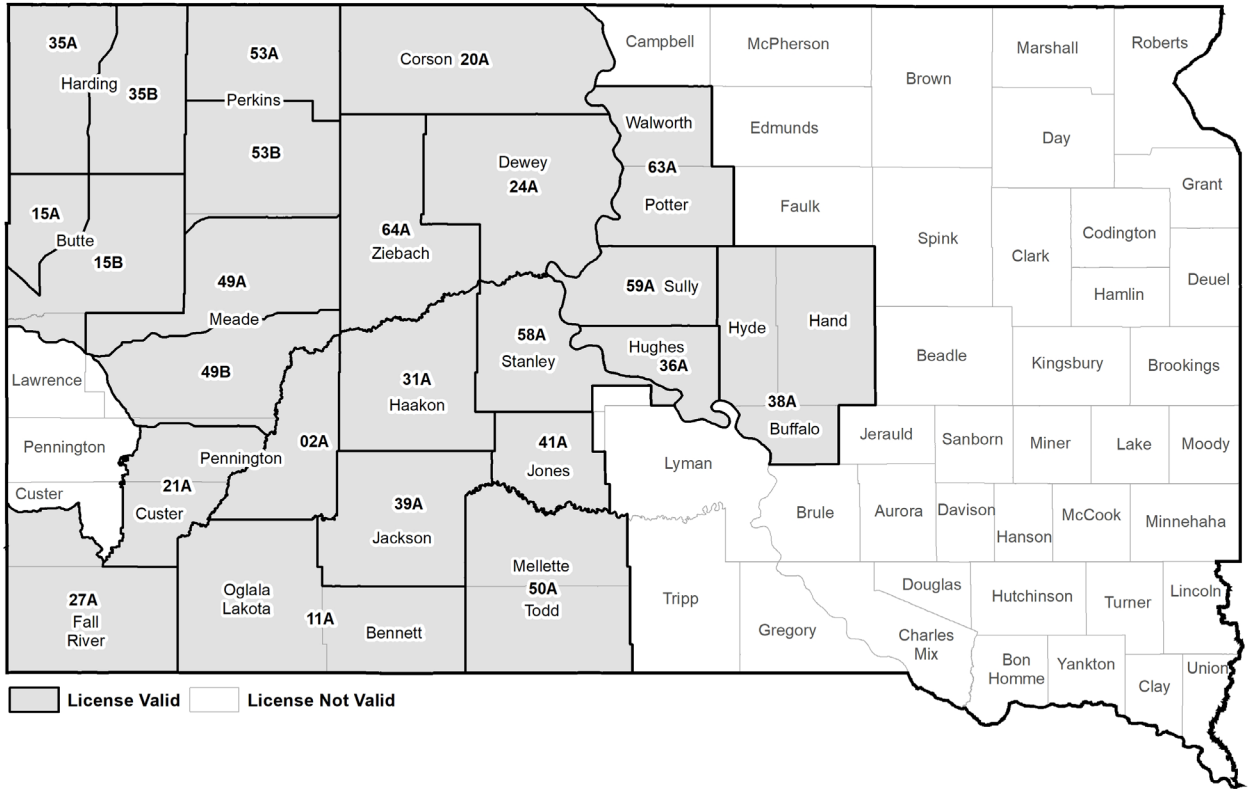
RECRUITMENT, RETENTION, REACTIVATION (R3) CRITERIA

1. Does the regulation or fee inhibit a user’s ability to participate? Not applicable.
2. Does the regulation increase the opportunity for new and existing users? Not applicable.
3. How does the regulation impact the next generation of hunters, anglers, trappers and outdoor recreationists? Not applicable.
4. Does the regulation enhance the quality of life for current and future generations by getting families outdoors? Not applicable.

FISCAL IMPACT

No fiscal impact to the Department.

ANTELOPE UNITS



GAME, FISH AND PARKS COMMISSION ADMINISTRATIVE ACTION

Antelope Hunting Season – Hunting Unit License Allocations

Commission Meeting Dates:	Proposal	May 5-6, 2022	Custer State Park
	Public Hearing	July 7, 2022	Spearfish
	Finalization	July 7-8, 2022	Spearfish

LICENSE ALLOCATION BY UNITS

License and tag types will be recommended
at the June Commission meeting.

APPROVE _____ **MODIFY** _____ **REJECT** _____ **NO ACTION** _____

GAME, FISH AND PARKS COMMISSION ACTION PROPOSAL

Archery and General Muzzleloading Deer Hunting Seasons

Chapters 41:06:22 and 41:06:45

Commission Meeting Dates:	Proposal	May 5-6, 2022	Custer State Park
	Public Hearing	July 7, 2022	Spearfish
	Finalization	July 7-8, 2022	Spearfish

DEPARTMENT RECOMMENDATION

Recommended changes from last year:

1. Adjust administrative rules to correct and simplify those deer units that are open for the respective LM1 units for antlerless white-tailed deer licenses and to exclude Custer State Park from the archery and muzzleloader deer hunting seasons.

SUPPORTIVE INFORMATION

Only those deer hunting units that offer firearm antlerless deer licenses are open to the LM1 unit (antlerless white-tailed deer licenses) for both the archery and muzzleloader deer hunting seasons.

Custer State Park is closed to the statewide archery and muzzleloader deer hunting seasons.

DRAFT ADMINISTRATIVE RULE CHANGES

The following are proposed draft changes that are intended to incorporate the recommended changes adopted by the Commission.

41:06:22:01.01. Open units. The following is a description of the open units:

- (1) Unit ARD-ST1: statewide, excluding Custer State Park;
- (2) Unit ARD-ER1: all counties east of the Missouri River;
- (3) Unit ARD-WR1: all counties west of the Missouri River, excluding Custer State Park;
- (4) Unit ARD-LM1: antlerless whitetail deer licenses will be available in hunting units that offer a deer license for antlerless deer in the lottery drawing for the Black Hills, West River, and East River deer seasons. One single tag license may be purchased for this hunting unit; all areas open to archery deer hunting; excluding the following deer hunting units referenced in chapters 41:06:19, 41:06:20, and 41:06:21: BD1, 02C, 07A, 08A, 12A, 14A, 27L, 33A, 34A, 35L, 36A, 38A, 41A, 50A, 54A, 58D, 59A, 59B, 61A, and 65A;
- (5) Unit ARD-MP1: for those designated areas within the city limits of Custer;
- (6) Unit ARD-MP2: for those designated areas within the city limits ~~limites~~ of Rapid City; and
- (7) Unit ARD-MP3: for those designated areas within the city limits of Sioux Falls.

41:06:45:02. Open units. The following is a description of the open units:

- (1) Unit MZD-ST1: statewide, excluding Custer State Park; and
- (2) Unit MZD-LM1: antlerless whitetail deer licenses will be available in hunting units that offer a deer license for antlerless deer in the lottery drawing for the Black Hills, West River, and East River deer seasons. One single tag license may be purchased for this hunting unit. One single tag license may be purchased for all areas open to muzzleloading deer hunting, excluding the following deer hunting units referenced in chapters 41:06:19, 41:06:20, and 41:06:21: BD1, 02C, 07A, 08A, 11B, 12A, 14A, 27L, 33A, 34A, 35L, 36A, 38A, 41A, 50A, 54A, 58D, 59A, 59B, 61A, and 65A.

RESIDENT/NONRESIDENT CRITERIA

Not applicable.

RECRUITMENT, RETENTION, REACTIVATION (R3) CRITERIA

Not applicable.

FISCAL IMPACT

No fiscal impact to the Department.

APPROVE _____	MODIFY _____	REJECT _____	NO ACTION _____
---------------	--------------	--------------	-----------------

GAME, FISH AND PARKS COMMISSION ACTION PROPOSAL

Hunting Requirements and Prohibited Methods

Chapter 41:06:04

Commission Meeting Dates:	Proposal	May 5-6, 2022	Custer State Park
	Public Hearing	July 7, 2022	Spearfish
	Finalization	July 7-8, 2022	Spearfish

DEPARTMENT RECOMMENDATION

Recommended changes from last year:

1. To address an administrative rule clean up that was overlooked during the rule-making process when the GFP Commission modified cervid carcass transportation and disposal regulations in May of 2021 (refer to handout).

SUPPORTIVE INFORMATION

Exposure to an area where a CWD-positive carcass has decomposed could be enough to cause infection in cervids. This unnatural dispersal of CWD-infected cervid carcasses by hunters from the location of harvest from a CWD infected area to an uninfected area is a concern. This concern is valid even with carcass movement amongst infected areas between hunting units, as prevalence rates likely vary spatially amongst and between hunting units. Due to this risk of potential environmental contamination, it is important that the carcasses of cervids possibly infected with CWD, including all bones and other waste from taxidermy and butchering be disposed of in a way that protects uninfected cervids from exposure.

Justification for these proposed changes is to simplify regulations for hunters and other stakeholders, implement proactive versus reactive regulations to reduce the spread of CWD, and to provide hunters the option to transport harvested deer and elk to their choice of game processor, taxidermist or location of private processing/taxidermy by regulating the disposal of carcass parts.

DRAFT ADMINISTRATIVE RULE CHANGES

The following are proposed draft changes that are intended to incorporate the recommended changes adopted by the Commission.

41:06:03:19. Carcass disposal for wildlife processing facilities. Wildlife processing facilities, as defined by § 41:06:03:10, shall dispose of all remaining cervid carcass parts ~~obtained from outside this state~~ with a waste management provider or permitted landfill. Game processors licensed by another state or federal entity shall dispose of carcasses as required by the conditions associated with their license.

RESIDENT/NONRESIDENT CRITERIA

Not applicable.

RECRUITMENT, RETENTION, REACTIVATION (R3) CRITERIA

Not applicable.

FISCAL IMPACT

No fiscal impact to the Department.

APPROVE _____ MODIFY _____ REJECT _____ NO ACTION _____

GAME, FISH, AND PARKS COMMISSION ACTION PROPOSAL

Fall Wild Turkey Hunting Season Chapter 41:06:14

Commission Meeting Dates:	Proposal	May 5-6, 2022	Custer State Park
	Public Hearing	July 7, 2022	Spearfish
	Finalization	July 7-8, 2022	Spearfish

DEPARTMENT RECOMMENDATION

Duration of Recommendation: 2022 and 2023 hunting seasons

Season Dates: November 1 – January 31

Licenses:

Black Hills:	200 resident and 16 nonresident single tag “any turkey” licenses
Prairie Units:	Residents: 1,700 single tag and 50 double tag “any turkey” licenses Nonresidents: 72 single and 4 double tag “any turkey” licenses

Requirements and Restrictions:

1. One-half of the fall turkey licenses are available for landowner preference applicants.
2. A person may not use any firearm on the south unit and the signed portion of the north unit of the Bureau of Land Management Fort Meade Recreation Area.
3. No person may shoot a turkey that is in a tree or roost.

Proposed changes from last year:

1. Adjust the maximum number of licenses available in administrative rule for the Black Hills unit from no more than 100 to 500 one-tag any turkey licenses may be issued to residents.
2. Adjust the maximum number of licenses available in administrative rule for the prairie units from no more than 400 to 2,500 one-tag any turkey licenses and 35 to 2,000 double-tag any turkey licenses may be issued to residents.
3. Establish or modify the following prairie units: 02A (portion of Pennington County), 08A (Davison and Hanson counties); 13A (Brule and Buffalo counties), 15A (Butte County and a portion of Lawrence County), 18A (Aurora and Douglas counties), 21A (portions of Custer and Pennington counties), 24A (Dewey and Ziebach counties), 27A (portion of Fall River County), 29A (Grant County), 30A (Gregory County), 31A (Haakon County), 35A (Harding County), 41A (Jones County), 45A (Lyman County), 49A (portions of Meade and Pennington counties), 50A (Mellette County), 60A (Tripp County), and 67A (Todd County).

SUPPORTIVE INFORMATION

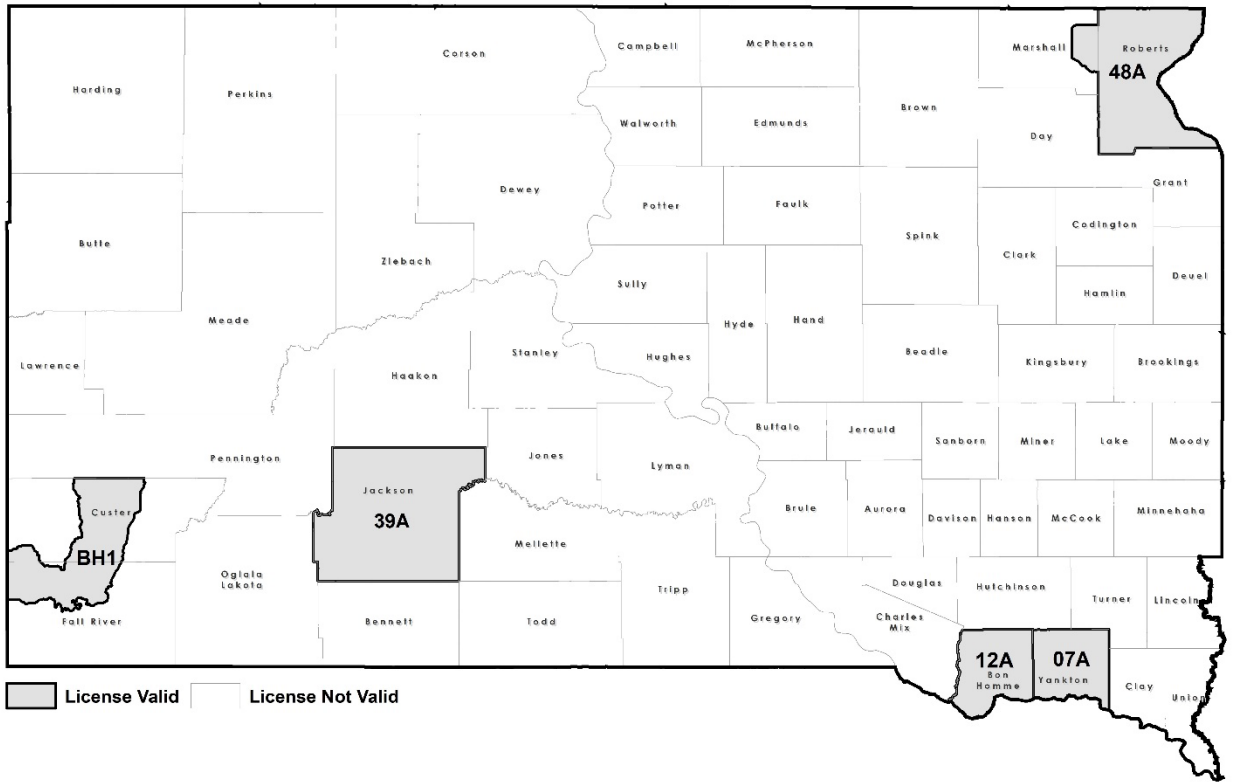
The proposed maximum number of fall turkey licenses will be established in administrative rule and the GFP Commission via administrative action will determine specific number of licenses by tag types and allocation amongst hunting units.

Harvest management strategy table of the Wild Turkey Action Plan and updated unit-specific population objectives provided guidance for the recommended changes to the respective fall turkey hunting units.

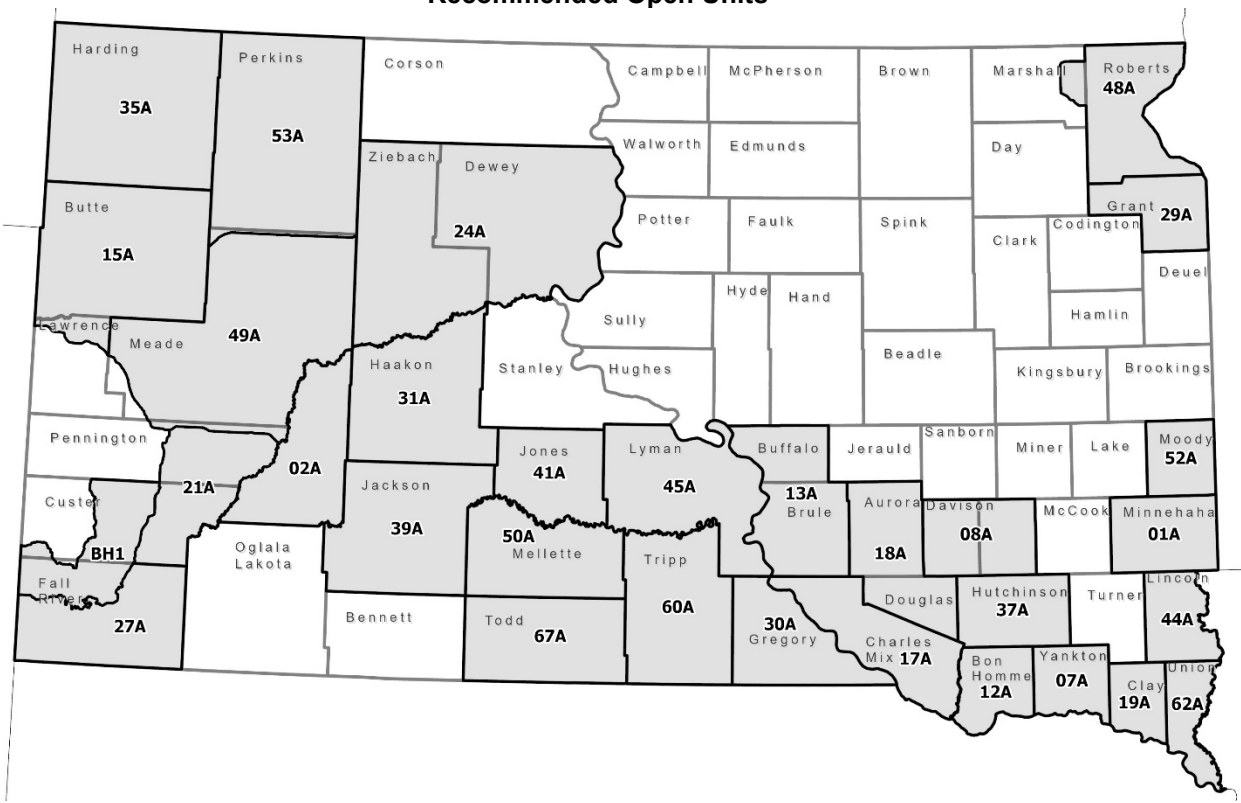
Year	Prairie				Black Hills			
	Licenses Sold	Tom Harvest	Hen Harvest	Success	Licenses Sold	Tom Harvest	Hen Harvest	Success
2017	898	194	56	26%	433	87	52	32%
2018	548	142	52	35%	220	27	26	25%
2019	548	130	52	33%	216	34	18	25%
2020	438	117	62	38%	109	11	15	23%
2021	Not Available				Not Available			

APPROVE ___ **MODIFY** ___ **REJECT** ___ **NO ACTION** ___

Current Open Units



Recommended Open Units



APPROVE **MODIFY** **REJECT** **NO ACTION**

DRAFT ADMINISTRATIVE RULE CHANGES

The following are proposed draft changes that are intended to incorporate the recommended changes adopted by the Commission.

41:06:14:01. Fall turkey hunting season established -- Number and type of licenses. The fall wild turkey hunting season is open from one-half hour before sunrise to sunset daily beginning on November 1 through January 31. No more than ~~500~~ 400 one-tag any turkey licenses may be issued to residents for the Black Hills fall turkey hunting season. No more than ~~2,500~~ 400 one-tag any turkey licenses and ~~2,000~~ 35 double-tag any turkey licenses may be issued to residents for the prairie fall turkey hunting season.

41:06:14:02.01. Prairie units. The following is a description of the open prairie units:

- (1) Unit PFT-01A: Minnehaha County. A person may use only a shotgun with shotshells, a muzzleloading shotgun, or a bow and arrow;
- (2) Unit PFT-02A: that portion of Pennington County east of the Cheyenne River;
- (3) ~~(2)~~ Unit PFT-06A: that portion of Brookings County east of Interstate 29. A person may use only a shotgun with shotshells, a muzzleloading shotgun, or a bow and arrow;
- (4) ~~(3)~~ Unit PFT-07A: Yankton County;
- (5) ~~(4)~~ Unit PFT-08A: ~~Those portions of Davison and Hanson cCounties within a line beginning at the junction of 403rd Avenue and 247th Street, then east on 247th Street to its junction with 413th Avenue, then south on 413th Avenue to its junction with Interstate 90, then west on Interstate 90 to its junction with 403rd Avenue, then north on 403rd Avenue to the point of beginning.~~ A person may use only a shotgun with shotshells, a muzzleloading shotgun, or a bow and arrow;
- (6) ~~(5)~~ Unit PFT-12A: Bon Homme County;
- (7) ~~(6)~~ Unit PFT-13A: Brule and Buffalo County counties;
- (8) Unit PFT-15A: Butte County and that portion of Lawrence County north of Interstate 90;
- (9) ~~(7)~~ Unit PFT-17A: Charles Mix County, excluding Lake Andes National Wildlife Refuge, and Douglas County;
- (10) Unit PFT-18A: Aurora and Douglas counties;
- (11) ~~(8)~~ Unit PFT-19A: Clay County;
- (12) Unit PFT-21A: that portion of Custer County east of State Highway 79 and that portion of Pennington County south of Interstate 90 between State Highway 79 and the Cheyenne River;
- (13) ~~(9)~~ Unit PFT-23A: Deuel County: A person may use only a shotgun with shotshells, a muzzleloading shotgun, or a bow and arrow;
- (14) Unit PFT-24A: Dewey and Ziebach counties;
- (15) Unit PFT-27A: that portion of Fall River County not included in Unit BFT-BH1;
- (16) Unit PFT-29A: Grant County;
- (17) Unit PFT-30A: Gregory County;

- (18) Unit PFT-31A: Haakon County;
- (19) Unit PFT-35A; Harding County;
- (20) Unit PFT-41A: Jones County;
- (21) ~~(10)~~ Unit PFT-36A: Hughes County, excluding Farm Island Recreation Area, LaFramboise Island Nature Area, and department land from the Pierre city limits to Farm Island Recreation Area;
- (22) ~~(11)~~ Unit PFT-37A: Hutchinson County. A person may use only a shotgun with shotshells, a muzzleloading shotgun, or a bow and arrow;
- (23) ~~(12)~~ Unit PFT-39A: Jackson County;
- (24) ~~(13)~~ Unit PFT-40A: Jerauld County;
- (25) ~~(14)~~ Unit PFT-44A: Lincoln County;
- (26) Unit PFT-45A: Lyman County;
- (27) ~~(15)~~ Unit PFT-48A: those portions of Marshall County south and east of State Highway 25 and north of State Highway 10 and Roberts County. A person may use only a shotgun with shotshells, a muzzleloading shotgun, or a bow and arrow;
- (28) Unit PFT-49A: those portions of Meade County not included in Units BFT-BH1 and PFT-53A, and that portion of Pennington County north of Interstate 90, west of the Cheyenne River;
- (29) Unit PFT-50A: Mellette County;
- (30) Unit PFT-52A: Moody County. A person may use only a shotgun with shotshells, a muzzleloading shotgun, or a bow and arrow;
- (31) Unit PFT-53A: Perkins County and that portion of Meade County north of U.S. Highway 212;
- (32) Unit PFT-60A: Tripp County;
- (33) ~~(18)~~ Unit PFT-61A: Turner County; and
- (34) ~~(19)~~ Unit PFT-62A: Union County; and
- (35) Unit PFT-67A: Todd County;.

RESIDENT/NONRESIDENT CRITERIA

Not applicable.

RECRUITMENT, RETENTION, REACTIVATION (R3) CRITERIA

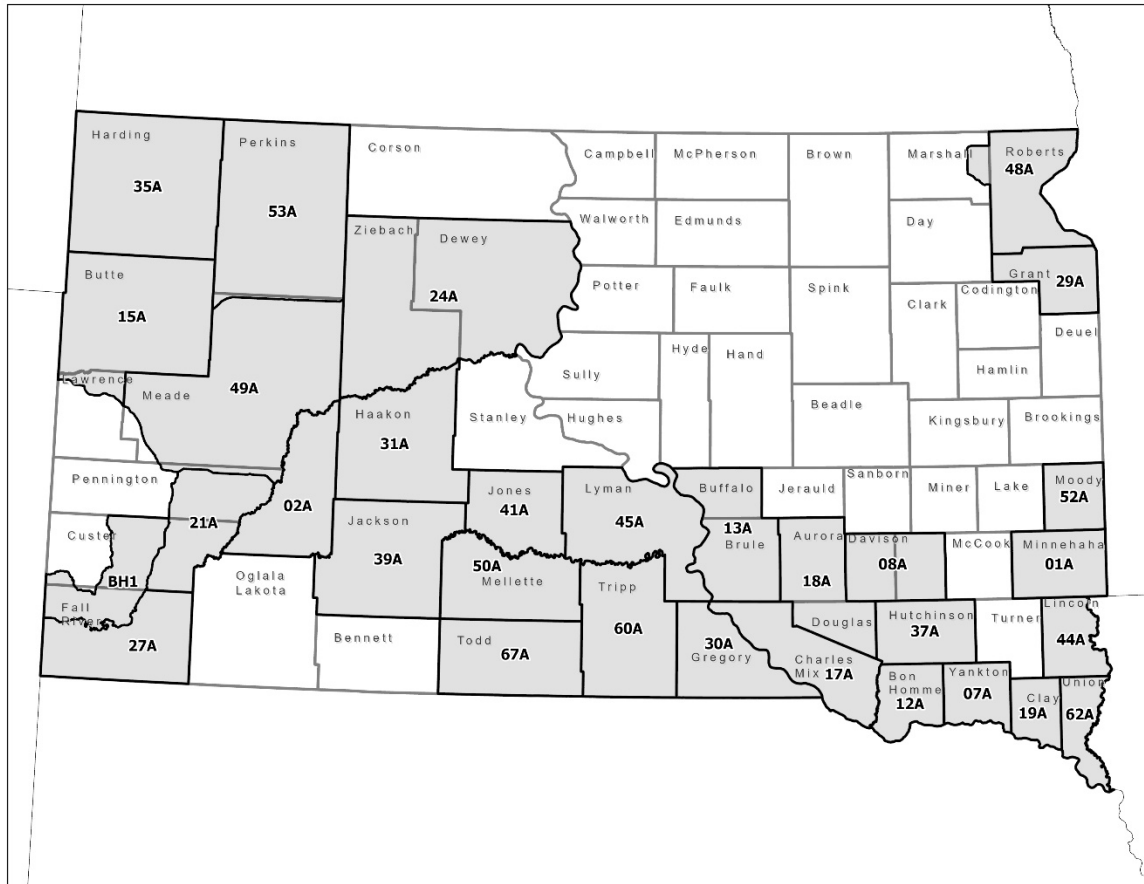
1. Does the regulation or fee inhibit a user's ability to participate? No.
2. Does the regulation increase the opportunity for new and existing users? Yes.
3. How does the regulation impact the next generation of hunters, anglers, trappers and outdoor recreationists? Not applicable.
4. Does the regulation enhance the quality of life for current and future generations by getting families outdoors? Yes.

FISCAL IMPACT

Minimal increase in license sales revenue.

APPROVE <input type="checkbox"/>	MODIFY <input type="checkbox"/>	REJECT <input type="checkbox"/>	NO ACTION <input type="checkbox"/>
---	--	--	---

FALL TURKEY UNITS



2022 & 2023 Fall Turkey Licenses

Unit #	Unit Name	Licenses	Unit #	Unit Name	Licenses
01A	Minnehaha	25	35A	Harding	25
02A	Pennington	50	37A	Hutchinson	25
07A	Yankton	175	39A	Jackson	50
08A	Davison/Hanson	75	41A	Jones	25
12A	Bon Homme	175	44A	Lincoln	50
13A	Brule/Buffalo	50	45A	Lyman	50
15A	Butte/Lawrence	50	48A	Marshall/Roberts	100
17A	Charles Mix	50	49A	Meade	50
18A	Aurora/Douglas	50	50A	Mellette	50
19A	Clay	50	52A	Moody	25
21A	Custer/Pennington	50	53A	Perkins	50
24A	Dewey/Ziebach	50	60A	Tripp	50
27A	Fall River	25	62A	Union	50
29A	Grant	100	67A	Todd	25
30A	Gregory	100	BH1	Black Hills	200
31A	Haakon	50			

GAME, FISH AND PARKS COMMISSION ADMINISTRATIVE ACTION

Fall Turkey Hunting Seasons – Hunting Unit License Allocations

Commission Meeting Dates:	Proposal	May 5-6, 2022	Custer State Park
	Public Hearing	July 7, 2022	Spearfish
	Finalization	July 7-8, 2022	Spearfish

LICENSE ALLOCATION BY UNITS

See Attached Spreadsheets

APPROVE _____ **MODIFY** _____ **REJECT** _____ **NO ACTION** _____

2022-2023 Fall Turkey

Unit #	Unit Name	Resident		Nonresident		License Totals										
		AnyT	31	2 AnyT	37	AnyT	31	2 AnyT	37	RES 1-Tag	RES 2-Tag	RES Licenses	RES Tags	NR 1-Tag	NR 2-Tag	NR License
01A	Minnehaha	25						25		25	25					
02A	Pennington	50			4			50		50	50	4			4	4
07A	Yankton	175						175		175	175					
08A	Davison/Hanson	75						75		75	75					
12A	Bon Homme	175						175		175	175					
13A	Brule/Buffalo	50						50		50	50					
15A	Butte/Lawrence	50			4			50		50	50	4			4	4
17A	Charles Mix	50						50		50	50					
18A	Aurora/Douglas	50						50		50	50					
19A	Clay	50						50		50	50					
21A	Custer/Pennington	50			4			50		50	50	4			4	4
24A	Dewey/Ziebach	50			4			50		50	50	4			4	4
27A	Fall River	25			2			25		25	25	2			2	2
29A	Grant	100						100		100	100					
30A	Gregory	100			8			100		100	100	8			8	8
31A	Haakon	50			4			50		50	50	4			4	4
35A	Harding	25			2			25		25	25	2			2	2
37A	Hutchinson	25						25		25	25					
39A	Jackson		50			4			50	50	100		4		4	8
41A	Jones	25			2			25		25	25	2			2	2
44A	Lincoln	50						50		50	50					
45A	Lyman	50			4			50		50	50	4			4	4
48A	Marshall/Roberts	100						100		100	100					
49A	Meade	50			4			50		50	50	4			4	4
50A	Mellette	50			4			50		50	50	4			4	4
52A	Moody	25						25		25	25					
53A	Perkins	50			4			50		50	50	4			4	4
60A	Tripp	50			4			50		50	50	4			4	4
62A	Union	50						50		50	50					
67A	Todd	25			2			25		25	25	2			2	2
BH1	Black Hills	200			16			200		200	200	16			16	16
TOTAL		1,900	50	72	4	1,900	50	1,950	2,000	72	4	76	80			
		RES & NR:				1,972	54	2,026	2,080							

FALL TURKEY
2020-2021 vs. 2022-2023

Unit #	Unit Name	2020-21 Resident Licenses	2022-23 Resident Licenses	# Change	% Change	2020-21 Resident Tags	2022-23 Resident Tags	# Change	% Change
01A	Minnehaha	0	25	25	#DIV/0!	0	25	25	#DIV/0!
02A	Pennington	0	50	50	#DIV/0!	0	50	50	#DIV/0!
07A	Yankton	150	175	25	17%	150	175	25	17%
08A	Davison/Hanson	0	75	75	#DIV/0!	0	75	75	#DIV/0!
12A	Bon Homme	150	175	25	17%	150	175	25	17%
13A	Brule/Buffalo	0	50	50	#DIV/0!	0	50	50	#DIV/0!
15A	Butte/Lawrence	0	50	50	#DIV/0!	0	50	50	#DIV/0!
17A	Charles Mix	0	50	50	#DIV/0!	0	50	50	#DIV/0!
18A	Aurora/Douglas	0	50	50	#DIV/0!	0	50	50	#DIV/0!
19A	Clay	0	50	50	#DIV/0!	0	50	50	#DIV/0!
21A	Custer/Pennington	0	50	50	#DIV/0!	0	50	50	#DIV/0!
24A	Dewey/Ziebach	0	50	50	#DIV/0!	0	50	50	#DIV/0!
27A	Fall River	0	25	25	#DIV/0!	0	25	25	#DIV/0!
29A	Grant	0	100	100	#DIV/0!	0	100	100	#DIV/0!
30A	Gregory	0	100	100	#DIV/0!	0	100	100	#DIV/0!
31A	Haakon	0	50	50	#DIV/0!	0	50	50	#DIV/0!
35A	Harding	0	25	25	#DIV/0!	0	25	25	#DIV/0!
37A	Hutchinson	0	25	25	#DIV/0!	0	25	25	#DIV/0!
39A	Jackson	35	50	15	43%	70	100	30	43%
41A	Jones	0	25	25	#DIV/0!	0	25	25	#DIV/0!
44A	Lincoln	0	50	50	#DIV/0!	0	50	50	#DIV/0!
45A	Lyman	0	50	50	#DIV/0!	0	50	50	#DIV/0!
48A	Marshall/Roberts	100	100	0	0%	100	100	0	0%
49A	Meade	0	50	50	#DIV/0!	0	50	50	#DIV/0!
50A	Mellette	0	50	50	#DIV/0!	0	50	50	#DIV/0!
52A	Moody	0	25	25	#DIV/0!	0	25	25	#DIV/0!
53A	Perkins	0	50	50	#DIV/0!	0	50	50	#DIV/0!
60A	Tripp	0	50	50	#DIV/0!	0	50	50	#DIV/0!
62A	Union	0	50	50	#DIV/0!	0	50	50	#DIV/0!
67A	Todd	0	25	25	#DIV/0!	0	25	25	#DIV/0!
BH1	Black Hills	100	200	100	100%	100	200	100	100%
TOTAL		535	1,950	1,415	264%	570	2,000	1,430	251%

Note: An additional 8% of the number of licenses will be available to nonresidents for the Black Hills and West River prairie units.

GAME, FISH AND PARKS COMMISSION ACTION PROPOSAL

Sage Grouse Hunting Season

Chapters 41:06:10

Commission Meeting Dates:	Proposal	May 5-6, 2022	Custer State Park
	Public Hearing	July 7, 2022	Spearfish
	Finalization	July 7-8, 2022	Spearfish

DEPARTMENT RECOMMENDATION

Duration of Recommendation: 2022 hunting season

Season Dates: Closed

Recommended changes from last year: None

SUPPORTIVE INFORMATION

Retaining a season closure is being recommended based on the season recommendation guidelines found within the “South Dakota Greater Sage-Grouse, 2022-2026”. Results from the 2021 spring lek surveys indicated 173 (158 in 2020) males counted on all leks. The 2022 spring lek surveys are still in progress and will be completed in mid-May. Regardless of lek survey results, total number of males for 2 consecutive years will not exceed the threshold identified in the management plan.

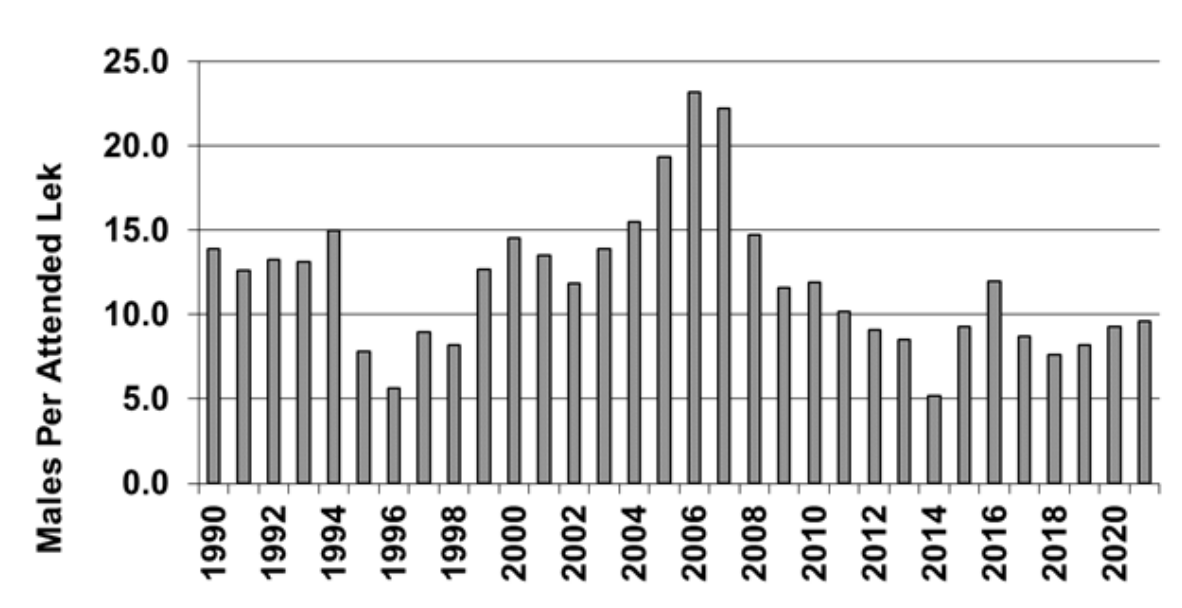
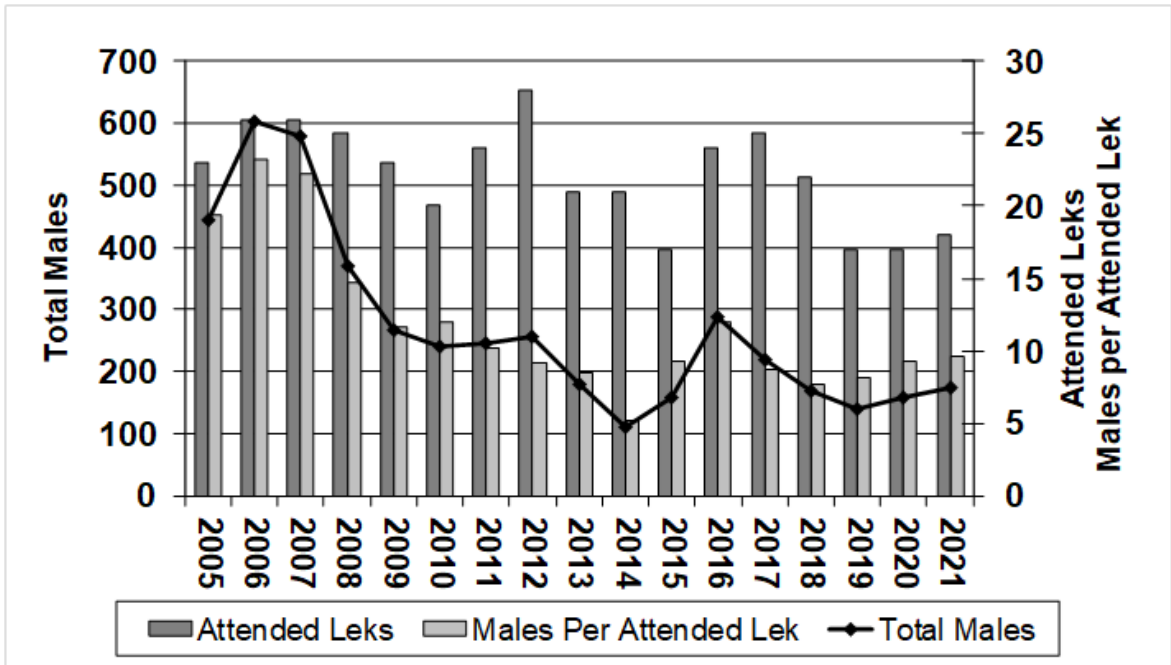
Population Index	Hunting Season Recommendation
≥ 300 males counted on all leks in Butte and Harding counties for 2 consecutive years	Option for short (~2-4 day) hunting season in Harding County and Butte County west of US HWY 85, limit 1 sage-grouse per hunter per season. Random drawing for up to 40 access permits
< 300 males counted on all leks in Butte and Harding counties OR ≥ 300 males counted on all leks in Butte and Harding counties for only 1 year	No Hunting Season

Year	Hunters	Harvest
2004	53	25
2005	40	26
2006	46	15
2007	25	10
2008	24	17
2009	20	7
2010	26	12
2011	27	11
2012	35	9
2013-2015	Season Closed	
2016*	30	10
2017-2021	Season Closed	

*Number of hunters and harvest based on hunter harvest survey results of those hunters who were successful in drawing a sage grouse hunting permit.

APPROVE _____ **MODIFY** _____ **REJECT** _____ **NO ACTION** _____

Sage Grouse Lek Survey Results, 2005-2021.



APPROVE _____ MODIFY _____ REJECT _____ NO ACTION _____

DRAFT ADMINISTRATIVE RULE CHANGES

The following are proposed draft changes that are intended to incorporate the recommended changes adopted by the Commission.

Not applicable

RESIDENT/NONRESIDENT CRITERIA

- 1. The Issue – Not applicable
- 2. Historical Considerations – Not applicable
- 3. Biological Considerations – Not applicable
- 4. Social Considerations – Not applicable
- 5. Financial considerations – Not applicable

RECRUITMENT, RETENTION, REACTIVATION (R3) CRITERIA

- 1. Does the regulation or fee inhibit a user’s ability to participate? Not applicable.
- 2. Does the regulation increase the opportunity for new and existing users? Not applicable.
- 3. How does the regulation impact the next generation of hunters, anglers, trappers and outdoor recreationists? Not applicable.
- 4. Does the regulation enhance the quality of life for current and future generations by getting families outdoors? Not applicable.

FISCAL IMPACT

No fiscal impact to the Department.

APPROVE _____	MODIFY _____	REJECT _____	NO ACTION _____
----------------------	---------------------	---------------------	------------------------

GAME, FISH AND PARKS COMMISSION ACTION PROPOSAL

Mourning Dove Hunting Season

Chapter 41:06:40

Commission Meeting Dates: Proposal Public Hearing Finalization	May 5-6, 2022 July 7, 2022 July 7-8, 2022	Custer State Park Spearfish Spearfish
--	---	---

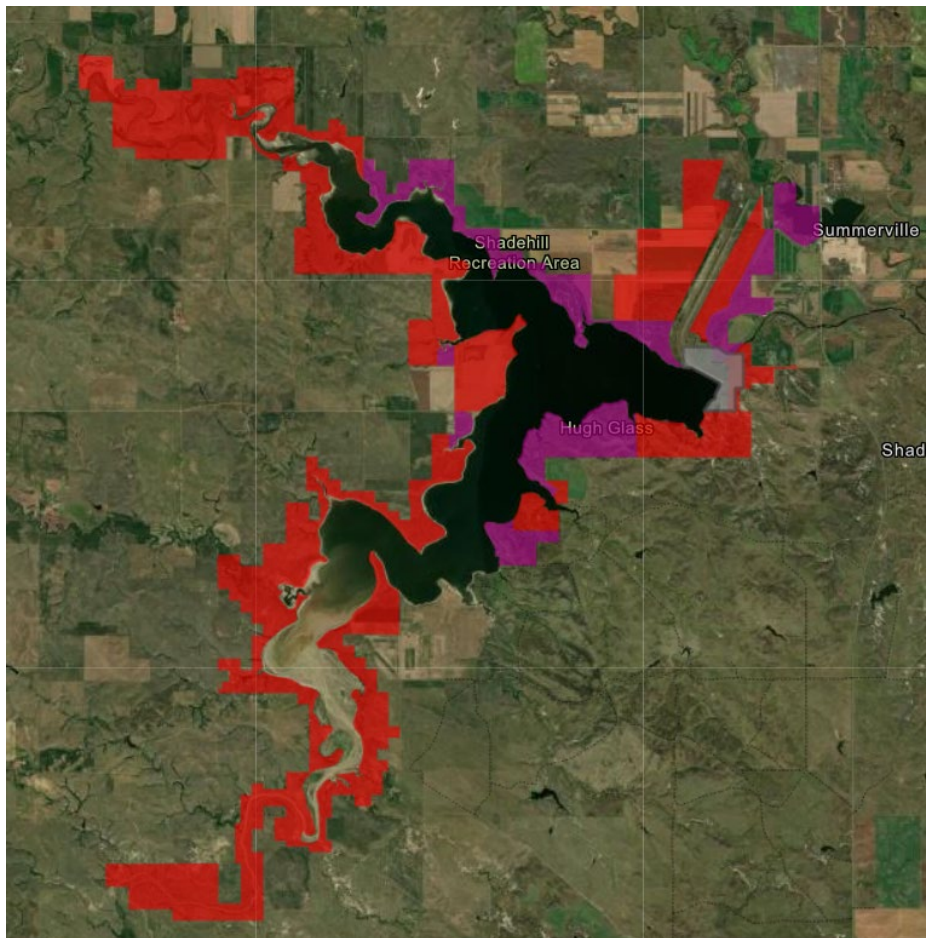
DEPARTMENT RECOMMENDATION

Recommended changes from last year:

1. To allow for mourning dove hunting at Shadehill State Recreation Area in Perkins County.

SUPPORTIVE INFORMATION

Department staff have determined that mourning dove hunting can occur at Shadehill State Recreation Area (purple area in map below) to provide additional hunting opportunities without compromising the objectives and services provided of the recreation area.



Game Production Areas



SDGFP Parks and Recreation Areas



DRAFT ADMINISTRATIVE RULE CHANGES

APPROVE _____	MODIFY _____	REJECT _____	NO ACTION _____
----------------------	---------------------	---------------------	------------------------

The following are proposed draft changes that are intended to incorporate the recommended changes adopted by the Commission.

41:06:40:05. Restrictions. Mourning dove hunting restrictions are as follows:

- (1) Doves may be shot only in flight; and
- (2) All state parks and state recreation areas are closed to dove hunting except Angostura State Recreation Area excluding that portion of the area lying east of the dam and Shadehill State Recreation Area.

RESIDENT/NONRESIDENT CRITERIA

Not applicable.

RECRUITMENT, RETENTION, REACTIVATION (R3) CRITERIA

1. Does the regulation or fee inhibit a user's ability to participate? No.
2. Does the regulation increase the opportunity for new and existing users? Yes, by providing mourning dove hunting opportunities to a public area where this activity is currently prohibited.
3. How does the regulation impact the next generation of hunters, anglers, trappers and outdoor recreationists? Provides mourning dove hunting opportunity to an area with great habitat and access.
4. Does the regulation enhance the quality of life for current and future generations by getting families outdoors? Yes.

FISCAL IMPACT

No fiscal impact to the Department.

APPROVE _____ MODIFY _____ REJECT _____ NO ACTION _____

**GAME, FISH, AND PARKS COMMISSION ACTION
PROPOSAL**

**Custer State Park Trophy Bison Bull Harvest
Chapter 41:06:42**

Commission Meeting Dates:	Proposal	May 5-6	CSP
	Public Hearing		Pierre
	Finalization		Pierre

DEPARTMENT RECOMMENDATION

41:06:42:01. Season established.

The trophy bison bull harvest in Custer State Park is open for 61 days beginning the third Monday in November. A licensee is restricted to three consecutive days for the hunt. Licensees shall arrange their hunting dates with the Custer State Park office.

Recommended changes from last year:

- 1. None

SUPPORTIVE INFORMATION

Eight trophy bull bison licenses are issued with two allocated to South Dakota residents in the first draw. Custer State Park’s trophy bison harvest is the tool used to remove over mature bison bulls (10+ year-old) but is a sought-after trophy opportunity. These bulls are eligible for Boone and Crockett awards and most qualify above the 115” minimum score. License holders are restricted to three days for the harvest and must arrange their hunting dates with the Custer State Park Office and be accompanied by an authorized park official when hunting.

APPROVE _____	MODIFY _____	REJECT _____	NO ACTION _____
---------------	--------------	--------------	-----------------

**GAME, FISH, AND PARKS COMMISSION ACTION
PROPOSAL**

**Custer State Park Non-Trophy Bison Harvest
Chapter 41:06:60**

Commission Meeting Dates:	Proposal	May 5-6	CSP
	Public Hearing		Pierre
	Finalization		Pierre

DEPARTMENT RECOMMENDATION

41:06:60:01. Season established.

The non-trophy bison harvest in Custer State Park is open for 40 days beginning the first Monday in October. A licensee is restricted to one day for the hunt and shall arrange their hunting date with the Custer State Park office.

Recommended changes from last year:

- 1. None

SUPPORTIVE INFORMATION

Fifteen non-trophy bull bison licenses are issued with seven allocated to South Dakota residents in a first draw. License holders are restricted to one day for the harvest, must arrange the hunt date with the Custer State Park office and shall be accompanied by an authorized park official when hunting.

APPROVE _____	MODIFY _____	REJECT _____	NO ACTION _____
----------------------	---------------------	---------------------	------------------------

**GAME, FISH, AND PARKS COMMISSION ACTION
PROPOSAL**

**Custer State Park Trophy and Non-Trophy Bison Harvest
License Forms and Fees,
Custer State Park Restrictions
Chapter 41:06:02**

Commission Meeting Dates:	Proposal Public Hearing Finalization	May 5-6	CSP Pierre Pierre
----------------------------------	---	----------------	----------------------------------

DEPARTMENT RECOMMENDATION

Season Dates: Trophy hunts 61 Days beginning the third Monday in November
Non-trophy hunts 40 Days beginning the first Monday in October.

Licenses: Eight trophy bull bison permits with two allocated to residents in the first draw.
Fifteen non-trophy bull bison permits with seven allocated to residents in the first draw. Zero cow bison permits.

Requirements and Restrictions:

- 1) Trophy bison unit is open within the boundaries of Custer State Park for a 61-day period beginning the third Monday of November (Nov 21, 2022 – Jan 20, 2023).
- 2) Non-trophy bison unit is open within the boundaries of Custer State Park for a 40-day period beginning the first Monday of October (Oct 3, 2022 – Nov 11, 2022).
- 3) Trophy bison permit holders are restricted to three days for the harvest and must arrange hunting date with the Custer State Park Office.
- 4) Non-trophy bison permit holders are restricted to one day for the harvest and must arrange hunting date with the Custer State Park Office.
- 5) Each permit holder shall be accompanied by an authorized Custer State Park official while hunting.

Recommended changes from last year:

1. None

SUPPORTIVE INFORMATION

APPROVE _____	MODIFY _____	REJECT _____	NO ACTION _____
----------------------	---------------------	---------------------	------------------------

GAME, FISH AND PARKS COMMISSION ACTION PROPOSAL

Spring Wild Turkey Hunting Season

Chapter 41:06:13

Commission Meeting Dates:	Proposal	April 7-8, 2022	Watertown
	Public Hearing	July 7, 2022	Spearfish
	Finalization	July 7-8, 2022	Spearfish

COMMISSION PROPOSAL

Proposed changes from last year:

1. Establish new rules within the Spring Turkey Hunting Season chapter that provides for Mentored Youth Turkey Recruitment licenses.

SUPPORTIVE INFORMATION

The objective of this proposal is to provide a means of encouraging youth participation with non-governmental organizations (NGO) that promote wildlife conservation and the recruitment, retention, and reactivation of hunters.

Currently for youth hunters, an unlimited number of mentored spring and fall turkey licenses are available for those youth under the age of 16 and valid statewide wherever a spring or fall turkey season is open, excluding Custer State Park. In addition, those youth who are 12 years of age who has completed a GFP's course of instruction in the safe handling of firearms are eligible to apply for limited draw prairie turkey licenses and to purchase an archery and/or Black Hills turkey license.

A mentored youth turkey recruitment license sponsored by an NGO would be available to those youth 15 years of age and younger that do not already possess any type of spring turkey hunting license. A limited number of licenses would be made available by application to eligible NGOs for distribution.

DEPARTMENT RECOMMENDATION

Recommended changes from proposal: After further Department discussion and to avoid any confusion with mentored or youth licenses, change the name from "Mentored Youth Turkey Recruitment" licenses to "Turkey Hunting Recruitment" licenses.

DRAFT ADMINISTRATIVE RULE CHANGES

The following are proposed draft changes that are intended to incorporate the necessary changes for consideration by the Commission.

41:06:13:05. Turkey hunting recruitment license – Open area and eligibility. The turkey hunting recruitment licenses are valid statewide, excluding Custer State Park, from one-half hour before sunrise to sunset beginning on the first Saturday of April through May 31 during the spring turkey hunting seasons. A person is eligible as provided in SDCL 41-6-81.

41:06:13:06. Number and types of licenses available -- Application process. A sponsoring non-governmental organization shall complete and apply to the department stating the name, address, and phone number of the sponsoring organization. No more than 10 male turkey hunting recruitment licenses may be issued with no more than two of the allocated licenses issued per sponsoring non-governmental organization. The sponsoring non-governmental organization shall be responsible for license fees.

41:06:13:07. Criteria for selection by commission of non-governmental organization. Any non-governmental organizations devoted to wildlife management; preservation; propagation; habitat; research; hunter retention, recruitment, and reactivation; and recognized as an exempt organization under § 501(c)(3) of the United States Internal Revenue Code may apply for such licenses.

41:06:13:08. Application deadline. The completed application under §41:06:13:06 must be received by the department by December 31 preceding the spring turkey season.

APPROVE _____	MODIFY _____	REJECT _____	NO ACTION _____
----------------------	---------------------	---------------------	------------------------

41:06:13:09. Selection of non-governmental organization by commission. The commission shall review and evaluate the information contained in the applications according to the criteria listed in §41:06:13:07 and shall select the participants it considers best qualified. The department secretary shall notify all applicants regarding the commission's selection.

RESIDENT/NONRESIDENT CRITERIA

1. The Issue
 - Youth involvement in non-governmental organizations that promote wildlife conservation is encouraged.
2. Historical Considerations
 - Non-governmental organizations promote wildlife conservation at the grassroots level and are conservation partners with local, tribal, state, and federal wildlife agencies.
3. Biological Considerations
 - Not applicable.
4. Social Considerations
 - The intent is to encourage youth to become involved in with non-governmental organizations that promote wildlife conservation and the recruitment, retention, and reactivation of hunters.
5. Financial considerations
 - Not applicable.

RECRUITMENT, RETENTION, REACTIVATION (R3) CRITERIA

1. Does the regulation or fee inhibit a user's ability to participate? No.
2. Does the regulation increase the opportunity for new and existing users? Yes.
3. How does the regulation impact the next generation of hunters, anglers, trappers, and outdoor recreationists?
 - Yes, by encouraging youth to become members and get involved with non-governmental organizations and their respective activities related to wildlife conservation.
4. Does the regulation enhance the quality of life for current and future generations by getting families outdoors?
 - Yes

FISCAL IMPACT

Not applicable.

APPROVE _____ MODIFY _____ REJECT _____ NO ACTION _____

Division of Parks and Recreation
April YTD 2022 Camping by District

LOCATION	2021	2022	%	LOCATION	2021	2022	%
Pickereel Lake	101	72	-29%	Lewis & Clark	1,377	778	-44%
Fort Sisseton	44	40	-9%	Chief White Crane	603	452	-25%
Roy Lake	306	290	-5%	Pierson Ranch	175	134	-23%
Sica Hollow	12	9	-25%	Springfield	64	50	-22%
DISTRICT 1	463	411	-11%	Sand Creek	-	-	
Richmond Lake	74	24	-68%	Tabor	2	-	-100%
Mina Lake	209	45	-78%	DISTRICT 9	2,221	1,414	-36%
Fisher Grove	8	24	200%	North Point	201	154	-23%
Amsden	2	1	-50%	North Wheeler	1	-	-100%
Lake Louise	53	27	-49%	Pease Creek	38	26	-32%
DISTRICT 2	346	121	-65%	Randall Creek	134	65	-51%
Pelican Lake	158	33	-79%	South Shore	5	4	-20%
Sandy Shore	35	17	-51%	South Scalp	2	9	350%
Lake Cochrane	17	4	-76%	Whetstone	-	1	
Hartford Beach	133	101	-24%	White Swan	2	-	-100%
DISTRICT 3	343	155	-55%	DISTRICT 10	383	259	-32%
Oakwood Lakes	239	130	-46%	Farm Island	340	427	26%
Lake Poinsett	218	85	-61%	West Bend	234	179	-24%
Lake Thompson	203	109	-46%	DISTRICT 11	574	606	6%
DISTRICT 4	660	324	-51%	Oahe Downstream	513	298	-42%
Lake Herman	204	103	-50%	Cow Creek	166	82	-51%
Walker's Point	113	34	-70%	Okobojo	18	8	-56%
Lake Carthage	-	-		Spring Creek	33	29	-12%
DISTRICT 5	317	137	-57%	DISTRICT 12	730	417	-43%
Snake Creek	214	155	-28%	West Whitlock	38	41	8%
Platte Creek	54	58	7%	East Whitlock	12	2	-83%
Buryanek	76	72	-5%	Swan Creek	37	14	-62%
Burke Lake	7	-	-100%	Indian Creek	200	121	-40%
DISTRICT 6	351	285	-19%	Lake Hiddenwood	-	-	
Palisades	351	461	31%	Walth Bay	-	-	
Big Sioux	588	470	-20%	West Pollock	19	8	-58%
Lake Vermillion	519	323	-38%	DISTRICT 13	306	186	-39%
DISTRICT 7	1,458	1,254	-14%	Bear Butte	29	8	-72%
Newton Hills	671	449	-33%	DISTRICT 14	29	8	-72%
Good Earth	-	-		Shadehill	121	106	-12%
Union Grove	82	31	-62%	Llewellyn Johns	12	1	-92%
DISTRICT 8	753	480	-36%	Rocky Point	380	153	-60%
				DISTRICT 15	513	260	-49%
				Custer	1,603	1,284	-20%
				DISTRICT 16	1,603	1,284	-20%
				Angostura	1,053	903	-14%
				Sheps Canyon	38	62	63%
				DISTRICT 17	1,091	965	-12%
				TOTAL YTD	12,141	8,566	-29%
				TOTAL for Month	10,068	6,881	-32%

Division of Parks and Recreation					
April Revenue by Item					
	2021		2022		%
	Number	Dollar	Number	Dollar	Change
Annual	4,520	\$ 162,732	2,495	\$ 89,802	-45%
2nd Annual	598	\$ 10,764	276	\$ 4,968	-54%
Combo	3,267	\$ 176,402	2,405	\$ 129,888	-26%
Transferable	304	\$ 24,344	205	\$ 16,400	-33%
Daily License	3,838	\$ 30,701	1,651	\$ 13,208	-57%
Unattended Vehicle Daily	90	\$ 1,357	15	\$ 225	-83%
GSM Annual Trail Pass	335	\$ 5,025	208	\$ 3,120	-38%
GSM Daily Trail Pass	149	\$ 596	59	\$ 236	-60%
Motorcoach Permit	34	\$ 102	-	\$ -	
CSP 7 Day Pass	6,194	\$ 123,871	3,791	\$ 75,820	-39%
CSP 7 Day Bike Pass	35	\$ 700	1	\$ 20	-97%
Rally Bike Band	-	\$ -		\$ -	
One-Day Special Event		\$ 50	0	\$ -	-100%
PERMITS	19,364	\$ 536,644	11,106	\$ 333,687	-38%
Camping Services		\$ 1,931,080		\$ 1,772,361	-8%
Picnic Reservations		\$ 1,600		\$ 1,180	-26%
Firewood	1,218	\$ 7,307	164	\$ 984	-87%
Gift Card		\$ 335		\$ 1,915	472%
Boat Slips		\$ 17,081		\$ -	-100%
LODGING	1,218	\$ 1,957,403	164	\$ 1,776,440	-9%
TOTAL	20,582	\$ 2,494,047	11,270	\$ 2,110,127	-15%

Division of Parks and Recreation					
April YTD 2022 Revenue by Item					
	2021		2022		%
	Number	Dollar	Number	Dollar	Change
Annual	8,674	\$ 312,248	7,214	\$ 259,708	-17%
2nd Annual	1,028	\$ 18,504	667	\$ 12,006	-35%
Combo	7,967	\$ 430,202	7,351	\$ 396,936	-8%
Transferable	712	\$ 56,938	585	\$ 46,800	-18%
Daily License	6,324	\$ 50,594	3,780	\$ 30,240	-40%
Unattended Vehicle Daily	224	\$ 3,361	58	\$ 870	-74%
GSM Annual Trail Pass	1,046	\$ 15,690	667	\$ 10,005	-36%
GSM Daily Trail Pass	466	\$ 1,864	293	\$ 1,172	-37%
Motorcoach Permit	77	\$ 232	85	\$ 255	10%
CSP 7 Day Pass	9,695	\$ 193,897	6,970	\$ 139,400	-28%
CSP 7 Day Bike Band	36	\$ 710	1	\$ 20	
Rally Bike Band	-	\$ -	-	\$ -	
One-Day Special Event		\$ 600		\$ 50	
PERMITS	36,248	\$ 1,084,840	27,671	\$ 897,462	-17%
Camping Services		\$ 5,494,893		\$ 5,281,931	-4%
Picnic Reservations		\$ 5,270		\$ 2,160	-59%
Firewood	1,348	\$ 8,086	235	\$ 1,410	-83%
Gift Card		\$ 3,870		\$ 5,923	53%
Boat Slips		\$ 205,236		\$ 186,237	-9%
LODGING	1,348	\$ 5,717,356	235	\$ 5,477,661	-4%
TOTAL	37,596	\$ 6,802,196	27,906	\$ 6,375,123	-6%

Division of Parks and Recreation
April YTD 2022 Visitation by District

<i>LOCATION</i>	<i>2020</i>	<i>2021</i>	<i>%</i>	<i>LOCATION</i>	<i>2020</i>	<i>2021</i>	<i>%</i>
Pickerel Lake	5,118	6,001	17%	Lewis & Clark	217,699	147,037	-32%
Fort Sisseton	7,221	4,745	-34%	Chief White Crane	3,285	2,159	-34%
Roy Lake	21,315	21,132	-1%	Pierson Ranch	14,155	16,907	19%
Sica Hollow	8,886	921	-90%	Springfield	43,459	39,835	-8%
<i>DISTRICT 1</i>	<i>42,540</i>	<i>32,799</i>	<i>-23%</i>	<i>DISTRICT 9</i>	<i>278,598</i>	<i>205,938</i>	<i>-26%</i>
Richmond Lake	11,658	7,908	-32%	North Point	12,766	14,034	10%
Mina Lake	4,919	4,609	-6%	North Wheeler	2,595	2,973	15%
Fisher Grove	1,693	1,235	-27%	Pease Creek	3,672	3,433	-7%
Lake Louise	5,467	3,977	-27%	Randall Creek	10,546	8,762	-17%
<i>DISTRICT 2</i>	<i>23,737</i>	<i>17,729</i>	<i>-25%</i>	Fort Randall Marina	1,004	1,016	1%
Pelican Lake	11,302	8,509	-25%	<i>DISTRICT 10</i>	<i>30,583</i>	<i>30,218</i>	<i>-1%</i>
Sandy Shore	4,825	4,622	-4%	Farm Island	42,000	32,412	-23%
Lake Cochrane	1,288	1,135	-12%	West Bend	3,424	3,266	-5%
Hartford Beach	38,057	27,778	-27%	LaFramboise Island	28,200	25,392	-10%
<i>DISTRICT 3</i>	<i>55,472</i>	<i>42,044</i>	<i>-24%</i>	<i>DISTRICT 11</i>	<i>73,624</i>	<i>61,070</i>	<i>-17%</i>
Oakwood Lakes	12,131	8,322	-31%	Oahe Downstream	74,506	63,895	-14%
Lake Poinsett	9,475	4,727	-50%	Cow Creek	44,403	41,677	-6%
Lake Thompson	11,533	5,823	-50%	Okobojo	9,971	10,877	9%
<i>DISTRICT 4</i>	<i>33,139</i>	<i>18,872</i>	<i>-43%</i>	Spring Creek	49,281	54,362	10%
Lake Herman	27,267	21,510	-21%	<i>DISTRICT 12</i>	<i>178,161</i>	<i>170,811</i>	<i>-4%</i>
Walker's Point	7,762	5,884	-24%	West Whitlock	3,873	3,098	-20%
<i>DISTRICT 5</i>	<i>35,029</i>	<i>27,394</i>	<i>-22%</i>	Swan Creek	3,111	2,639	-15%
Snake Creek	17,805	20,484	15%	Indian Creek	9,498	8,872	-7%
Platte Creek	18,263	22,812	25%	Lake Hiddenwood	-	-	
Buryanek	5,722	6,970	22%	Revhem Bay	20,031	19,442	-3%
Burke Lake	6,556	5,437	-17%	West Pollock	13,225	12,027	-9%
<i>DISTRICT 6</i>	<i>48,346</i>	<i>55,703</i>	<i>15%</i>	<i>DISTRICT 13</i>	<i>49,738</i>	<i>46,078</i>	<i>-7%</i>
Palisades	26,218	17,612	-33%	Bear Butte	4,657	3,281	-30%
Big Sioux	14,144	11,863	-16%	<i>DISTRICT 14</i>	<i>4,657</i>	<i>3,281</i>	<i>-30%</i>
Beaver Creek	7,329	6,149	-16%	Shadehill	6,127	4,453	-27%
Lake Vermillion	22,583	12,519	-45%	Llewellyn Johns	760	539	-29%
<i>DISTRICT 7</i>	<i>70,274</i>	<i>48,143</i>	<i>-31%</i>	Little Moreau	5,836	2,460	-58%
Newton Hills	24,716	20,201	-18%	Rocky Point	12,126	9,215	-24%
Good Earth	31,619	29,299	-7%	<i>DISTRICT 15</i>	<i>24,849</i>	<i>16,667</i>	<i>-33%</i>
Union Grove	4,308	3,418	-21%	Custer	275,171	249,076	-9%
Lake Alvin	37,917	36,057	-5%	<i>DISTRICT 16</i>	<i>275,171</i>	<i>249,076</i>	<i>-9%</i>
Spirit Mound	7,642	6,297	-18%	Angostura	27,277	20,238	-26%
Adams	7,429	6,800	-8%	Sheps Canyon	6,289	4,362	-31%
<i>DISTRICT 8</i>	<i>113,631</i>	<i>102,072</i>	<i>-10%</i>	<i>DISTRICT 17</i>	<i>33,566</i>	<i>24,600</i>	<i>-27%</i>
				<i>TOTAL YTD</i>	<i>1,371,115</i>	<i>1,152,495</i>	<i>-16%</i>
				<i>TOTAL for Month</i>	<i>505,539</i>	<i>398,904</i>	<i>-21%</i>



Contract Consultant Services: Pheasants Forever R3 Outreach Coordinator - SD

I. Primary Duties of the R3 Outreach Coordinator

- A. Mentorship and Mentored Hunts – The R3 Outreach Coordinator will work in close association with SDGFP to create, refine, and implement a mentorship program for supported hunts (and eventually fishing as well). This includes but is not limited to creation of standards and best practice strategies for safety, educational lessons, and standards. The R3 Outreach Coordinator will create and implement the mentorship program within the first year of hire, with review of the program quarterly upon its implementation. The R3 Outreach Coordinator will also work to recruit, retain, and train mentors for this program from The Campus’ volunteers (in conjunction with The Campus’ Volunteer Coordinators), NGO’s, and when possible Veterans. The R3 Outreach Coordinator will have the goal of recruiting and training 5 mentors within the first year of hire (with a retention rate of 50% or better). Lastly, aside from creating an active Mentorship program with active mentors, this position will also work to create synergy for the program from the public.
- B. NGO Relations – The R3 Outreach Coordinator will work closely with NGO’s to build relationships that can lead to SDGFP/NGO programming. The focus of this programming will be implementation of programming that moves folks further along the ORAM model for hunting (eventually with fishing to be added). The short-term emphasis will be on recruitment, retention, and reactivation of small game hunters in the state of South Dakota as the sport is seeing a drastic decline and has unlimited opportunity for growth. The R3 Outreach Coordinator will focus special attention on three overlooked groups: females, veterans, and college aged students in their R3 efforts. It will be expected that 2 female targeted programs and 2 college aged targeted programs will be implemented along with the veteran opportunities laid out below. These programs will be evenly spread throughout the state and for the first year.
- C. Veteran Specific Programming – The R3 Outreach Coordinator will work to create and implement at least 4-6 hunting opportunities with the target audience being Veterans (Priority will be given to SD veterans). Ideally these 4-6 hunting opportunities will be spread evenly throughout the state with at least half of these hunting opportunities including the South Dakota Veterans’ families as part of the target audience. These programs will focus on supporting Veterans and their families in recovery from Post-Traumatic Stress Disorder (PTSD) and other mental health issues related to military service.

License Sales Totals

(as of April 27)

date updated: 28 April 2022

Resident	2019	2020	2021	3-yr Avg	2022	2022			% Change		
						Revenue	+/- Licenses	+/- Revenue	2021 vs 2022	3-yr Avg vs 2022	2021 vs 2022
Combination	24,207	29,786	29,663	27,885	30,925	\$ 1,700,875	1,262	3,040	\$ 69,410	\$ 167,182	11%
Junior Combination	2,229	3,876	3,117	3,074	0	\$ -	-3,117	-3,074	\$ (84,159)	\$ (82,998)	-100%
Senior Combination	6,050	7,056	7,859	6,988	7,954	\$ 318,160	95	966	\$ 3,800	\$ 38,627	14%
Small Game	1,113	1,149	1,335	1,199	2,279	\$ 75,207	944	1,080	\$ 31,152	\$ 35,640	90%
Youth Small Game	549	686	685	640	1,031	\$ 5,155	346	391	\$ 1,730	\$ 1,955	61%
1-Day Small Game	246	214	364	275	151	\$ 1,812	-213	-124	\$ (2,556)	\$ (1,484)	-45%
Migratory Bird Certificate*	10,019	11,133	10,922	10,691	6,075	\$ 30,375	-4,847	-4,616	\$ (24,235)	\$ (23,082)	-43%
Predator/Varmint	858	856	764	826	1,357	\$ 6,785	593	531	\$ 2,965	\$ 2,655	64%
Furbearer	2,466	2,534	2,977	2,659	2,721	\$ 81,630	-256	62	\$ (7,680)	\$ 1,860	2%
Annual Fishing	16,016	27,313	22,443	21,924	19,670	\$ 550,760	-2,773	-2,254	\$ (77,644)	\$ (63,112)	-10%
Senior Fishing	4,661	6,398	6,499	5,853	5,735	\$ 68,820	-764	-118	\$ (9,168)	\$ (1,412)	-2%
1-Day Fishing	587	1,176	915	893	706	\$ 5,648	-209	-187	\$ (1,672)	\$ (1,493)	-21%
RESIDENT TOTALS =	69,001	92,177	87,543	82,907	78,604	\$ 2,845,227	-8,939	-4,303	\$ (98,057)	\$ 74,337	-5.2%

Nonresident	2019	2020	2021	3-yr Avg	2022	2022			% Change		
						Revenue	+/- Licenses	+/- Revenue	2021 vs 2022	3-yr Avg vs 2022	2021 vs 2022
Small Game	2,508	2,576	5,285	3,456	4,233	\$ 512,193	-1,052	777	\$ (127,292)	\$ 93,977	22%
Youth Small Game	107	119	233	153	291	\$ 2,910	58	138	\$ 580	\$ 1,380	90%
Annual Shooting Preserve	44	45	69	53	91	\$ 11,011	22	38	\$ 2,662	\$ 4,638	73%
5-day Shooting Preserve	616	759	1,002	792	1,179	\$ 89,604	177	387	\$ 13,452	\$ 29,387	49%
1-day Shooting Preserve	171	173	181	175	196	\$ 9,016	15	21	\$ 690	\$ 966	12%
Spring Light Goose	2,810	2,961	4,486	3,419	4,246	\$ 212,300	-240	827	\$ (12,000)	\$ 41,350	24%
Youth Spring Light Goose	94	122	161	126	324	\$ 8,424	163	198	\$ 4,238	\$ 5,157	158%
Migratory Bird Certificate*	167	199	392	253	218	\$ 1,090	-174	-35	\$ (870)	\$ (173)	-14%
Predator/Varmint	809	691	856	785	810	\$ 32,400	-46	25	\$ (1,840)	\$ 987	3%
Furbearer	5	6	4	5	3	\$ 825	-1	-2	\$ (275)	\$ (550)	-40%
Annual Fishing	7,241	9,141	11,973	9,452	15,343	\$ 1,027,981	3,370	5,891	\$ 225,790	\$ 394,719	62%
Family Fishing	2,313	2,859	3,500	2,891	0	\$ -	-3,500	-2,891	\$ (234,500)	\$ (193,675)	-100%
Youth Annual Fishing	260	343	443	349	0	\$ -	-443	-349	\$ (11,075)	\$ (8,717)	-100%
3-Day Fishing	3,386	3,578	3,738	3,567	3,970	\$ 146,890	232	403	\$ 8,584	\$ 14,899	11%
1-Day Fishing	1,862	2,536	4,855	3,084	5,502	\$ 88,032	647	2,418	\$ 10,352	\$ 38,683	78%
NONRESIDENT TOTALS =	22,393	26,108	37,178	28,560	36,406	\$ 2,142,676	-772	7,846	\$ (121,504)	\$ 423,027	27.5%
GRAND TOTALS =	91,394	118,285	124,721	111,467	115,010	\$ 4,987,903	-9,711	3,543	\$ (219,561)	\$ 497,364	3.2%

	2021	2022	+/- Licenses	+/- Revenue	2022 Revenue
Resident Habitat Stamp	72,628	69,927	-2,701	\$ (27,010)	\$ 699,270
Nonresident Habitat Stamp	35,836	35,127	-709	\$ (17,725)	\$ 878,175
Totals =	108,464	105,054	-3,410	\$ (44,735)	\$ 1,577,445

*The license year for Migratory Bird Certificates changed in 2021 so license sales are not comparable between years.