



**Healing  
Home**  
CAMPUS

**St. Francis House  
Capital Campaign**



**FOR IT IS IN GIVING  
THAT WE RECEIVE.**

- PRAYER OF ST. FRANCIS



## A Growing Need in Our Community

Homelessness in our community continues to grow and evolve, increasing the need for structured, supportive housing. Today, demand for that support exceeds the space available in our facility.

As of February 2026, the St. Francis House waiting list included **155 men and 89 women** seeking placement. While the organization has added 45 beds in the past two years, bringing total capacity to 168 beds, the need continues to outpace available space.

More individuals are seeking not only shelter, but the time and structure necessary to rebuild their lives and prepare for long-term stability and self-sufficiency.

## Who St. Francis House Serves

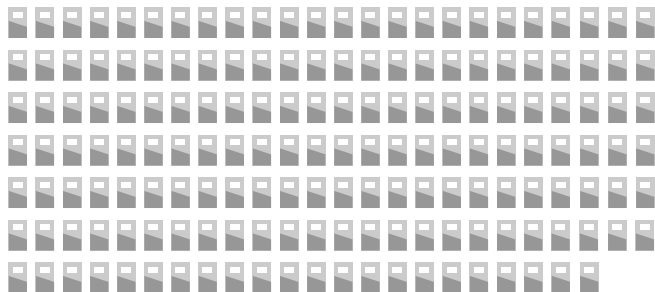
St. Francis House exists to help people reclaim their independence. The organization welcomes men, women, and families with children. Guests are referred by physicians, specialty courts, correctional facilities, and community agency partners.

Guests receive basic needs such as safe shelter and meals while also participating in individualized programming designed to address the circumstances that led to and perpetuate homelessness.

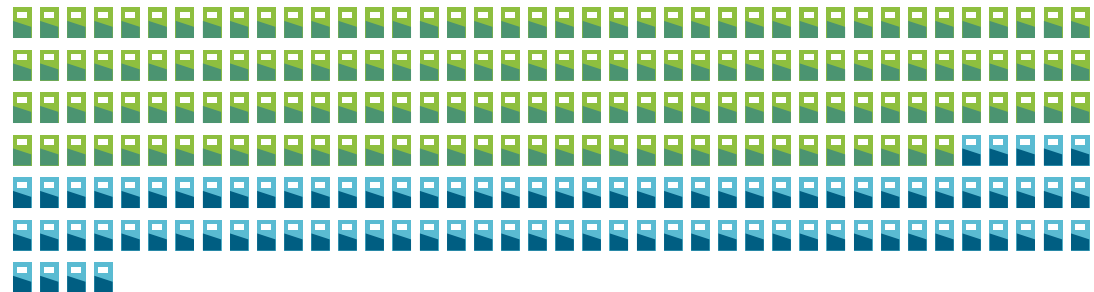
### We help guests:

- Obtain and maintain employment
- Build financial responsibility and savings
- Address personal challenges with support and accountability
- Prepare for long-term housing and independence

### Current Capacity: 168 Beds



### People on Waitlist: 244



155 Men 89 Women

## A Proven Approach

Guests enter a safe, zero-tolerance environment free of alcohol, drugs, and gambling. From there, each person works with staff to develop a plan tailored to their individual needs. The program focuses on employment, financial responsibility, and personal progress.

## The results are significant.

At St. Francis House, success means more than housing. Ninety-six percent of guests are employed, working toward paying off debts, and building savings for the future.

St. Francis House is a leader in the homelessness ecosystem, taking initiative on innovative solutions. By reducing the burden on emergency resources, the St. Francis House model addresses root causes and long-term costs — not just symptoms.

**“We’ve had the privilege of partnering with St. Francis House for over two years. The relationship we have built has enabled us to offer second chances to individuals who are eager to work, rebuild their lives, and make meaningful contributions to our team.”**

**Tyler Blotske**  
Operations Manager, LIPPERT



## The Step Between Shelter and Stability

For many individuals experiencing homelessness, rebuilding independence does not happen overnight.

At St. Francis House, the average length of stay in the main building is 81 days. While this provides critical stability, space limitations restrict the ability to extend stays and provide deeper programming that prepares guests for independent living. This creates a critical service gap in the St. Francis House continuum of care.

St. Francis House data show that outcomes **improve significantly** once guests complete **60 days or more** of structured programming.

# 88%

**A recent pilot program further demonstrated the impact of this approach. Eighty-eight percent of guests who moved from the main building to transitional housing ultimately transitioned to permanent housing within the community.**

The pilot program confirms that when guests stay longer and engage with St. Francis House's proven programming, they achieve lasting stability at significantly higher rates.

This level of support is known as progressive engagement, a person-centered approach to ending homelessness that provides targeted

resources, training, and support as individuals build the skills necessary for independent living.

St. Francis House is expanding its campus with a new building that will enable longer stays, deeper support, and progressive engagement programming — fulfilling the vision of a comprehensive campus dedicated to the St. Francis House mission.

Through progressive engagement, guests will be supported by:

- Re-entry support services
- Career advancement through job and trade training
- Education and workforce development
- Financial literacy and long-term budgeting support
- Mental health and addiction services
- Healthcare and culturally based programming

**St. Francis House expects this approach will lead to:**

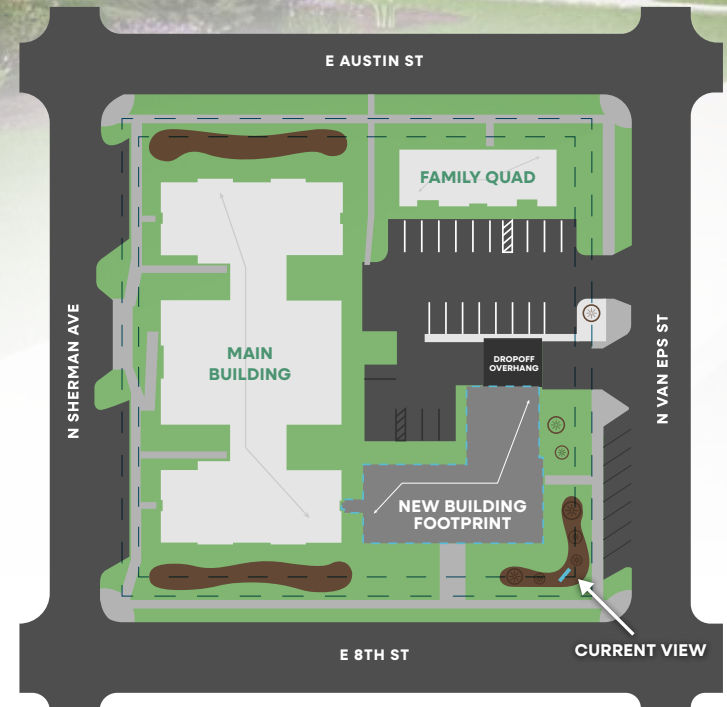
- **95% of guests securing permanent housing upon program completion.**
- **Measurable improvement in economic stability and employment.**
- **Reduction in reliance on emergency shelters and crisis services for guests.**
- **90%+ of guests not returning to prison - Department of Corrections**

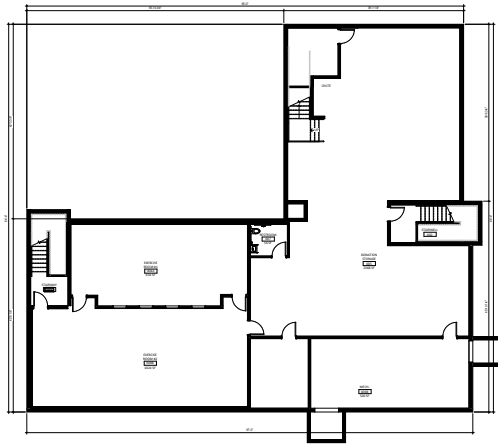
NEW ADDITION TO CAMPUS



Healing  
Home  
CAMPUS

Expanding the Campus,  
Deepening the Mission





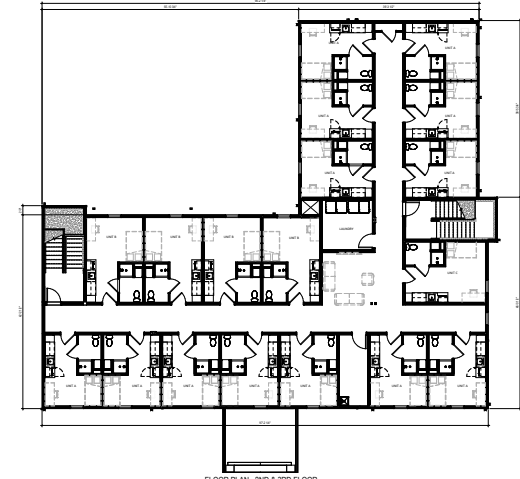
FLOOR PLAN - BASEMENT

**BASEMENT**  
**Fitness Room**  
**Storage & Operations**



FLOOR PLAN - 1ST FLOOR

**MAIN FLOOR**  
**Workforce Lab**  
**Programming Offices (6)**  
**Community Room**  
**Healthcare Access**



FLOOR PLAN - 2ND & 3RD FLOOR

**TOP FLOORS**  
**38 Housing Units**  
**Case Management Office**

---

## Making Space for Progress

Located on the same block as the main building, Healing Home will include 38 one-bedroom efficiency units, with 19 units for men and 19 units for women.

Four of these units will be reserved for youth aging out of the foster care system in partnership with Sioux Falls Housing.

A centralized case management office will serve all residents, ensuring easy access to guidance and support throughout the building.

The main level will house St. Francis House's first dedicated programming space, increasing the organization's capacity to engage community partners on-site. Meeting rooms will allow partners to connect privately with guests, while the expanded space opens the door to new collaborators and programming opportunities.

## Inside Healing Home

Healing Home expands the organization's existing services while introducing new spaces designed to support them.

The expansion is designed first and foremost around the needs of guests.

**“I want to thank the St. Francis House for accepting me in their facility. I came from prison and didn't have anywhere to parole. They helped me get myself back on my feet and financially stable by helping me find a job that I have been at for two months now. If it wasn't for the St. Francis House, I wouldn't have clothes, food or rides to anywhere I need to be. Staff helps keep me from the streets and keeps me sober. Without this place, I wouldn't be where I am today.”**

**– Tyler**





## KEY FEATURES WILL INCLUDE:



### **Workforce Lab**

Workforce Lab for job readiness and employment support



### **Nursing Station**

Nursing station providing healthcare access and telehealth consultations



### **Cultural Programming**

A room designed to support smudging ceremonies



### **Fitness Room**

Fitness room, the number-one request identified by guests in a recent survey



### **Multipurpose Community Room**

Dynamic, shared community space that supports a wide range of programming: including recovery groups, life skills training, employment and financial literacy classes, and inter-agency collaboration meetings



### **Donation Drop-Off Area**

Separate donation drop-off area to improve campus safety and operations

## Community Partnerships

St. Francis House works closely with community partners to ensure guests receive comprehensive support.

Healthcare providers, recovery organizations, educators, and workforce development partners all contribute to the services available to guests.

By collaborating with established community organizations, St. Francis House avoids duplicating services while maximizing the impact of donor support.

This collaborative approach ensures guests receive specialized care while allowing St. Francis House to remain focused on providing structured housing and programming.

**“With the expansion plans for the house, it would be really great if there were additional meeting rooms added. Being able to offer a quiet and private space where clients feel safe to share is important for their success and is also a requirement for us per HIPAA regulations.”**

**Face It TOGETHER Addiction Wellness Coach**

OUR PARTNERS MAKE  
OUR MISSION POSSIBLE



## Investing in Lasting Change

St. Francis House has a legacy of community support from volunteers to donors alike. St. Francis House has the staying power to expand programming for maximum guest success.

The Healing Home Campus Expansion represents a \$10 million investment in strengthening the pathway from homelessness to independence.

The campaign will be supported through a combination of Community Appeals, major gifts, grants, and a friends-and-family campaign.

Once operational, Healing Home will also be supported through diversified revenue sources including resident rent, program reimbursements, and partnerships with community agencies.

These resources strengthen the long-term sustainability of the program while ensuring responsible stewardship of donor support.

## Your support helps make that next step possible.

### Expenses Breakdown

#### Construction

- Building Structure – 38 units + Main Level
  - Basement
  - Donation drop-off overhang
  - Parking lot
- \$9,500,000**

2-Year Operating & Staffing Ramp Up **\$260,000**

Furniture, Fixtures & Equipment (FF&E): **\$240,000**

**Total: \$10,000,000**



**Support our campaign at this secure QR code.**

[www.stfrancishouse.com/healing-home-campus](http://www.stfrancishouse.com/healing-home-campus)



# Healing Home CAMPUS



**Support our campaign  
at this secure QR code.**

[www.stfrancishouse.com/healing-home-campus](http://www.stfrancishouse.com/healing-home-campus)

## **Questions?**

Contact Julie: [CEO@StFrancisHouse.com](mailto:CEO@StFrancisHouse.com)