

Department of Transportation
Division of Planning/Engineering
Right of Way Program
700 E Broadway Avenue
Pierre, South Dakota 57501-2586
605/773-3746 FAX: 605/773-5867

October 17, 2018

Mike Behm,
Director of Planning and Engineering
Department of Transportation
Pierre, South Dakota 57501

RE: October 25, 2018 Transportation Commission Agenda:

Dear Mr. Behm:

The following items are recommended for Commission consideration:

1. Abandonment – Clark County

This resolution will abandon the temporary easements on Clark County Project NH 0212(00)327, PCN 04P7.

2. Abandonment – Codington County

This resolution will abandon the temporary easements on Codington County Project P 4020(01), PCN 00RW.

3. Abandonment – Meade County

This resolution will abandon the temporary easements on Meade County Project NH 0212(00)114, PCN 04NF.

4. Abandonment – Meade County

This resolution will abandon the temporary easements on Meade County Project NH 0073(00)174, PCN 04T7.

5. Abandonment – Spink County

This resolution will abandon the temporary easements on Spink County Project NH 0212(00)327, PCN 04P7.

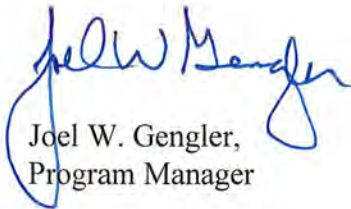
6. Condemnation – NH 0034(163)387, PCN 03TC, Lake County

Request Transportation Commission resolution determining that the taking and damaging of real property interests in and to the following property is necessary for a public purpose and authorizing condemnation:

Parcel 12 and 14 – LN Real Estate LLC, a Washington Limited Liability Company

To date, the Department of Transportation has been unable to acquire the real property interests through negotiations for the project NH 0034(163)387, PCN 03TC, Lake County, SD34 - From the Washington Ave/2nd Street NE Intersection South to the start of the Divided Highway in Madison. (See Attachments)

Sincerely,



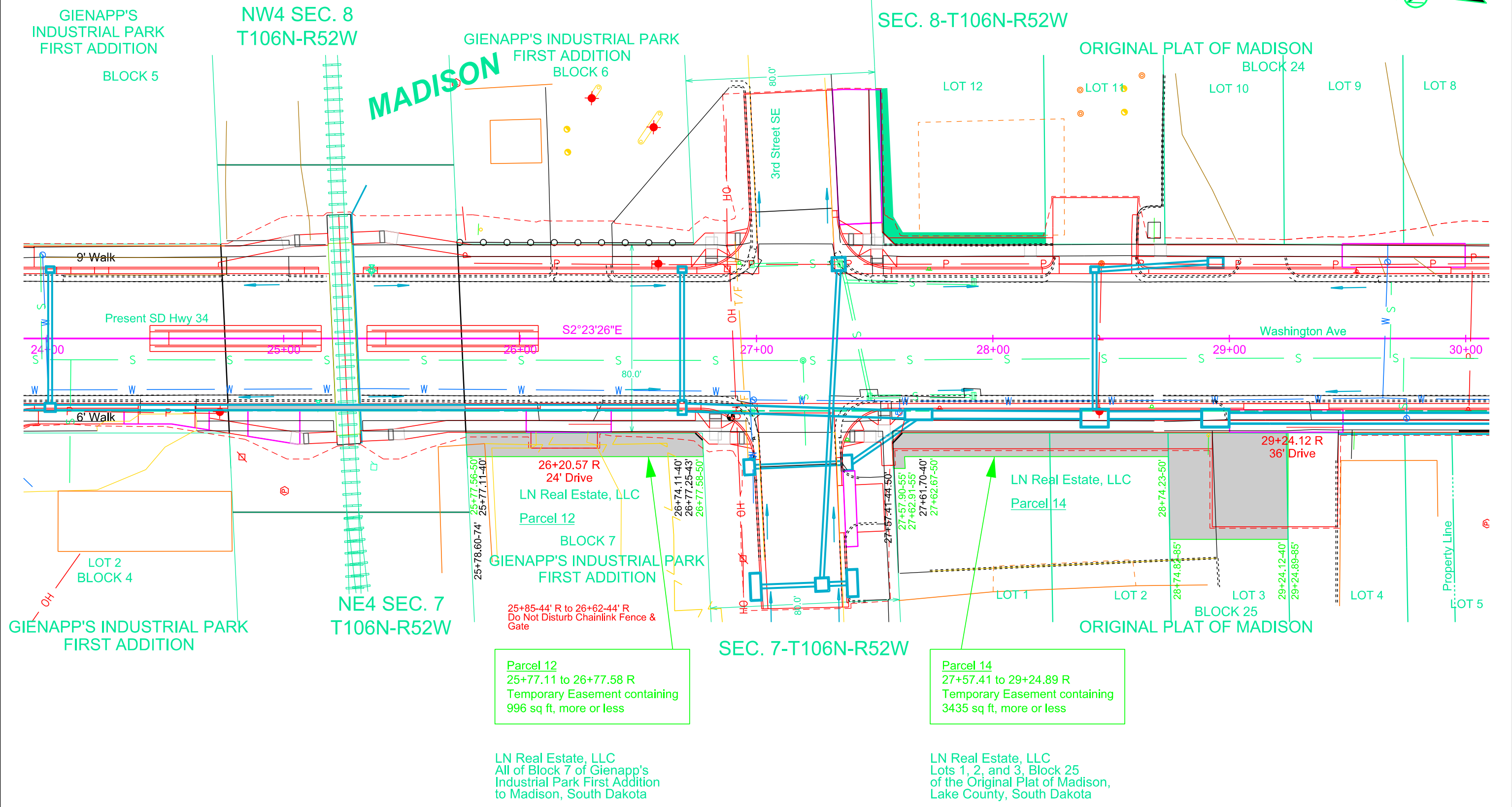
Joel W. Gengler,
Program Manager

Attachment A

STATE OF SOUTH DAKOTA	PROJECT NH 0034(163)387	SHEET	TOTAL SHEETS
Plotting Date: 10/17/2018		Rev 12/22/17 MLZ	

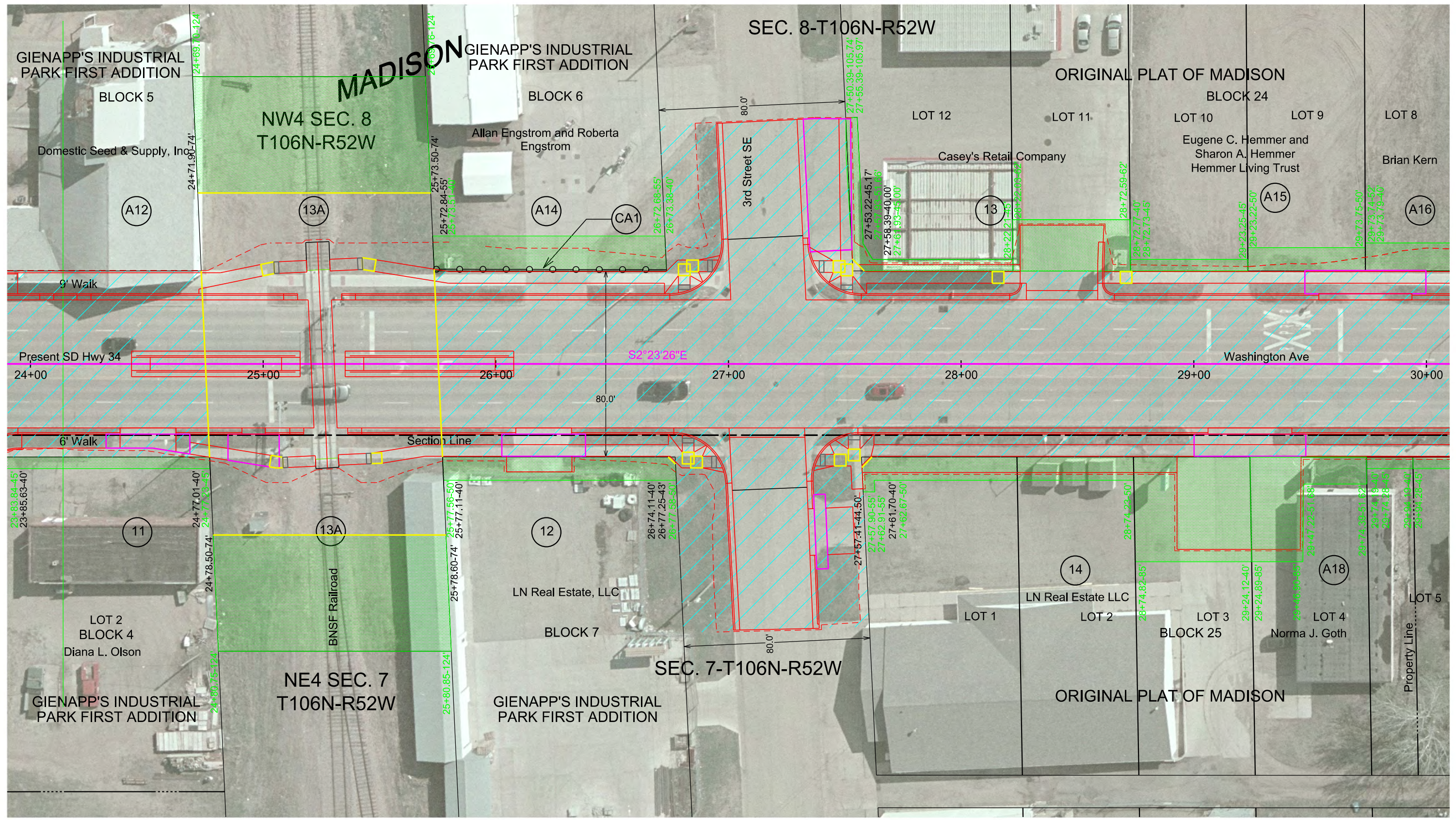
Plot Scale - 1"=40'

Plotted From - trp14341



File - ...Exhibit of Condemnation Parcels 12, 14.dgn

Item #6



Attachment B

Parcel 12

PLAT OF LOT H1

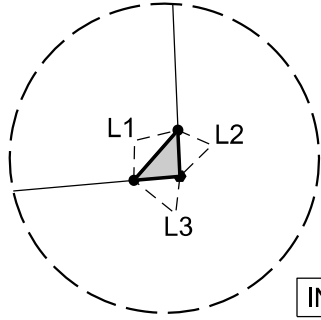
Showing a parcel of land to be acquired for highway purposes in

Block 7 of the Gienapp's Industrial Park First Addition to Madison

for construction of Project NH 0034(163)387
CITY OF MADISON
LAKE COUNTY, SOUTH DAKOTA

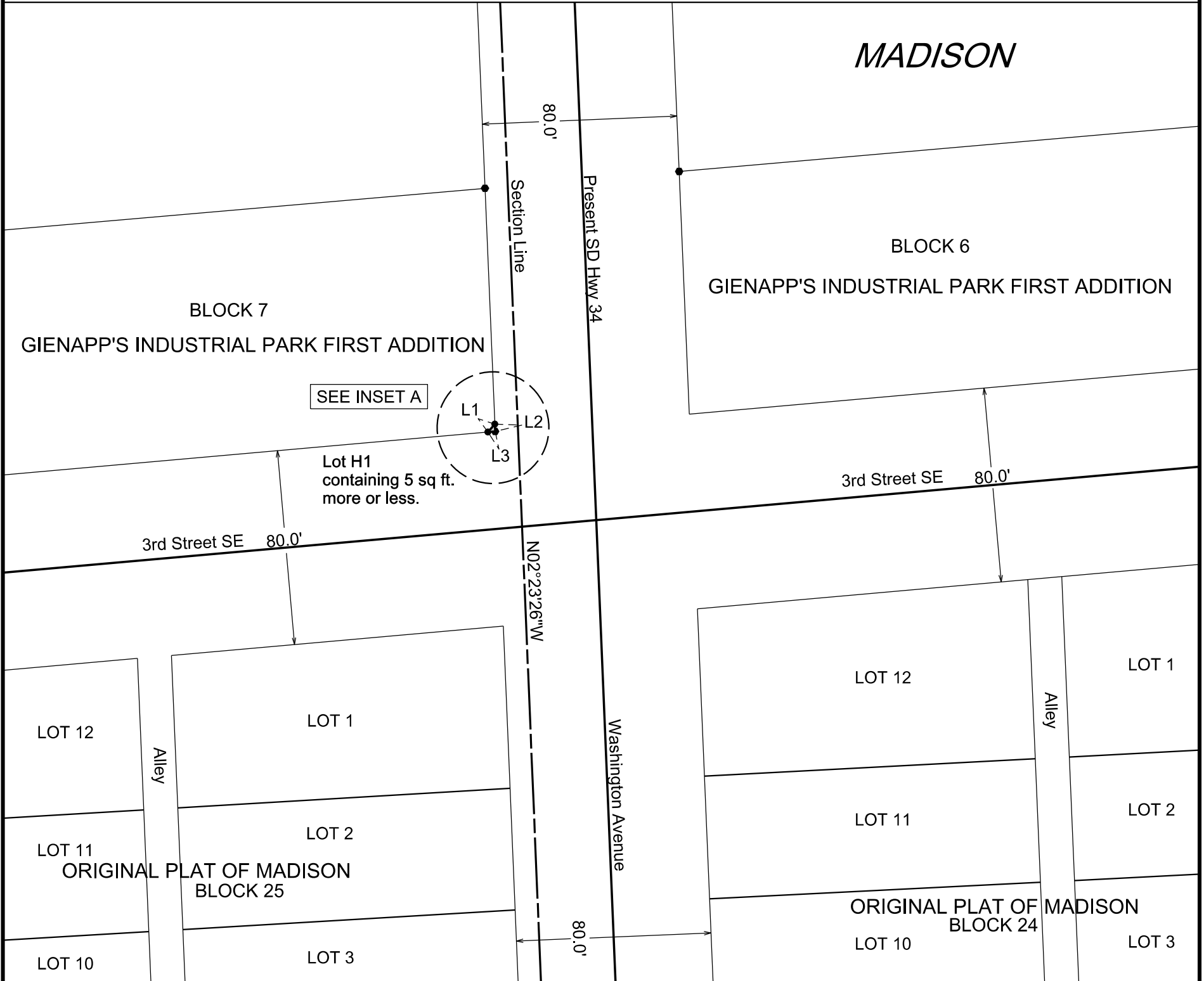
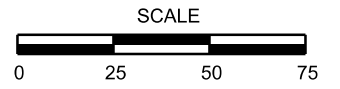
Scale: 1 inch = 50 feet

LEGEND
 • = found corner
 • = set corner
 All monumentation will be set upon project completion



INSET A

Line No.	Bearing	Feet
L1	N41°16'22"E	4.35
L2	S02°23'26"E	3.00
L3	S84°56'10"W	3.00



Note 1: The coordinates, distances and areas shown on this plat are based on the South Dakota State Plane coordinate System - South Zone NAD 83/07 SF = .9998526416

Note 2: Previously platted H-lots are included in existing right-of-way.

Drawn By Derek Lee Date 12/21/2015
 Checked By Jennica Wilcox Date 09/08/2016

SURVEYOR'S CERTIFICATE

I, NATHAN L. JIBBEN, Registered Land Surveyor, in and for the State of South Dakota, do hereby certify that as ordered by the South Dakota Department of Transportation the parcel of land as shown on this plat has been surveyed at my direction and under my control, and such parcel of land shall be hereafter known by the lot number designated herein. The location and dimensions of the parcel are shown on this plat.

In witness whereof, I have set my hand and seal this _____ day of _____ A.D., 20____.

Registered Land Surveyor
 Registration No. 8295

OFFICE OF REGISTER OF DEEDS

State of South Dakota
 County of LAKE ss
 Filed for record the _____ day of _____, A.D., 20____, at _____ M., and recorded in Books of Plats _____ on Page _____ therein.

Attachment B

Parcel 14

PLAT OF LOT H1

Showing a parcel of land to be acquired for highway purposes in

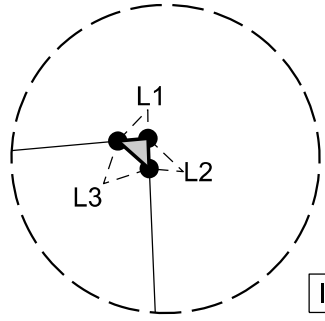
Lot 1 in Block 25 of the Original Plat of Madison

for construction of Project NH 0034(163)387
CITY OF MADISON
LAKE COUNTY, SOUTH DAKOTA

Scale: 1 inch = 50 feet

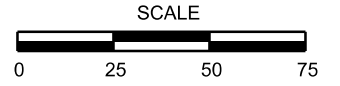
LEGEND
● = found corner
• = set corner

All monumentation will be set upon project completion

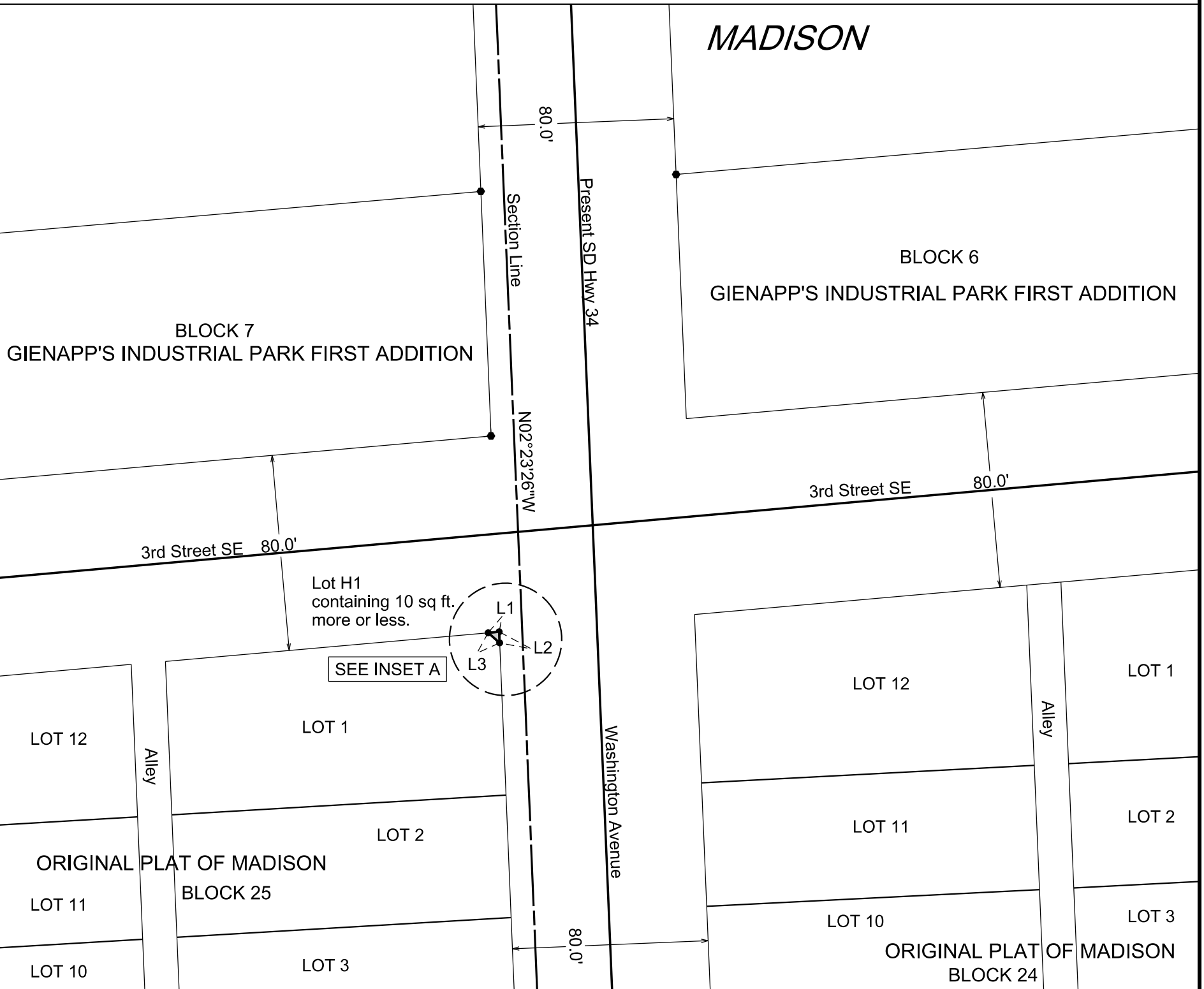


INSET A

Line No.	Bearing	Feet
L1	N84°56'10"E	4.50
L2	S02°23'26"E	4.50
L3	N48°43'38"W	6.22



MADISON



Lot H1 containing 10 sq ft. more or less.

SEE INSET A

Note 1: The coordinates, distances and areas shown on this plat are based on the South Dakota State Plane coordinate System - South Zone NAD 83/07 SF = .9998526416

Note 2: Previously platted H-lots are included in existing right-of-way.

Drawn By Derek Lee Date 12/21/2015
Checked By Jennica Wilcox Date 09/08/2016

SURVEYOR'S CERTIFICATE

I, NATHAN L. JIBBEN, Registered Land Surveyor, in and for the State of South Dakota, do hereby certify that as ordered by the South Dakota Department of Transportation the parcel of land as shown on this plat has been surveyed at my direction and under my control, and such parcel of land shall be hereafter known by the lot number designated herein. The location and dimensions of the parcel are shown on this plat.

In witness whereof, I have set my hand and seal this _____ day of _____ A.D., 20____.

Registered Land Surveyor
Registration No. 8295

OFFICE OF REGISTER OF DEEDS

State of South Dakota
County of LAKE ss
Filed for record the _____ day of _____, A.D., 20____, at _____ M., and recorded in Books of Plats _____ on Page _____ therein.

03TC

Register of Deeds

by

Deputy

027p1