



Division of Planning & Engineering  
Office of Right of Way  
700 E. Broadway Avenue  
Pierre, South Dakota 57501  
O: 605.773.3746  
[dot.sd.gov](http://dot.sd.gov)

---

July 16, 2025

Mike Behm,  
Director of Planning and Engineering  
Department of Transportation  
700 E. Broadway Avenue  
Pierre, South Dakota 57501

RE: July 24, 2025 Transportation Commission Agenda

Dear Mr. Behm:

The following item is recommended for Commission consideration:

1. Request Transportation Commission approval to abandon by resolution the following property acquired for DOT highway right of way:

Former SD Hwy 34 right of way remaining after completion of Meade County DOT project P 0034(143)44, PCN 02AB. (see attachments for legal descriptions and locations)

The above property is no longer needed for highway purposes and abandonment is recommended by DOT Rapid City Region and Area Offices.

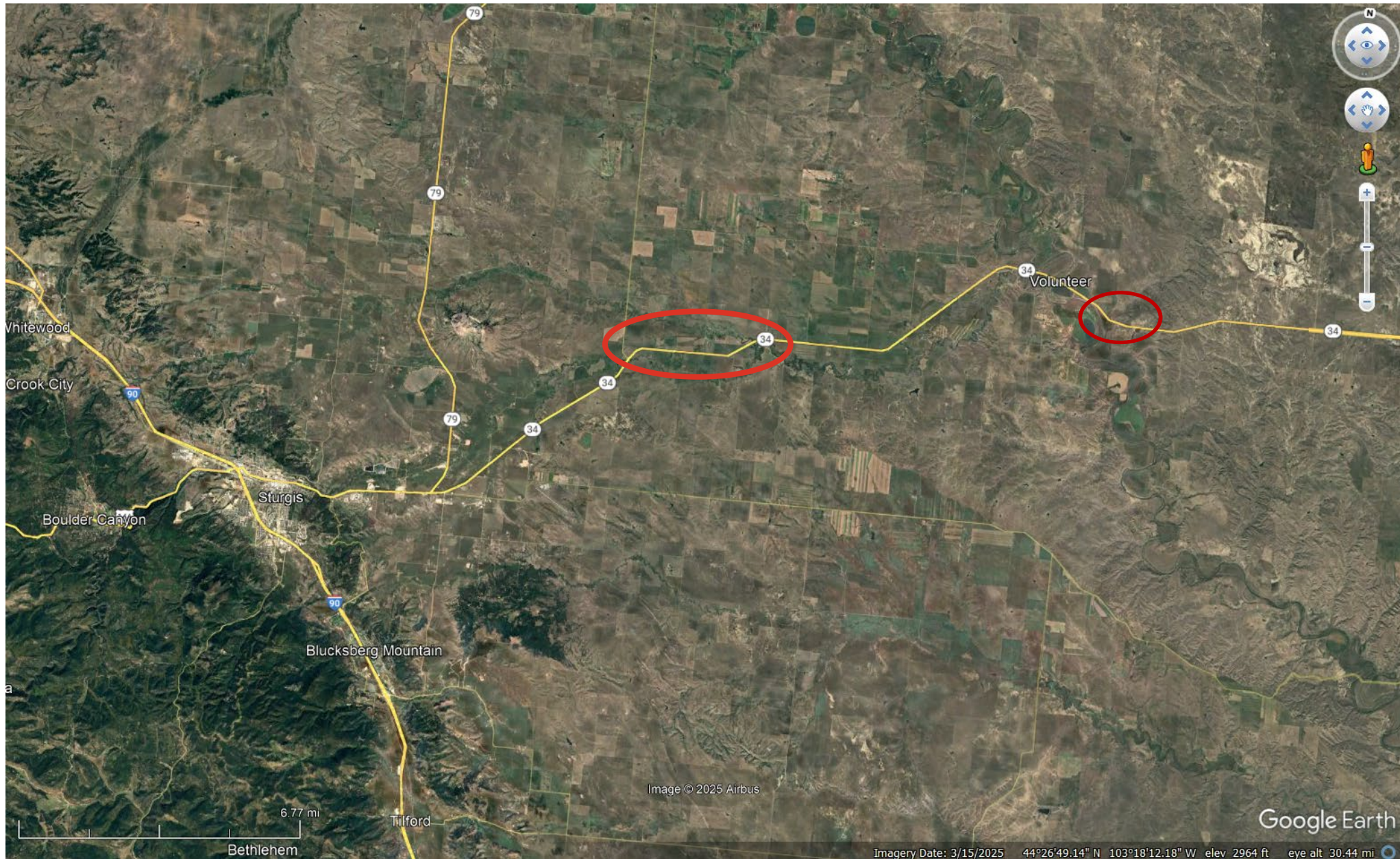
Sincerely,

A handwritten signature in blue ink that reads 'John Keyes'.

John Keyes  
Program Manager

# ROW Item #1

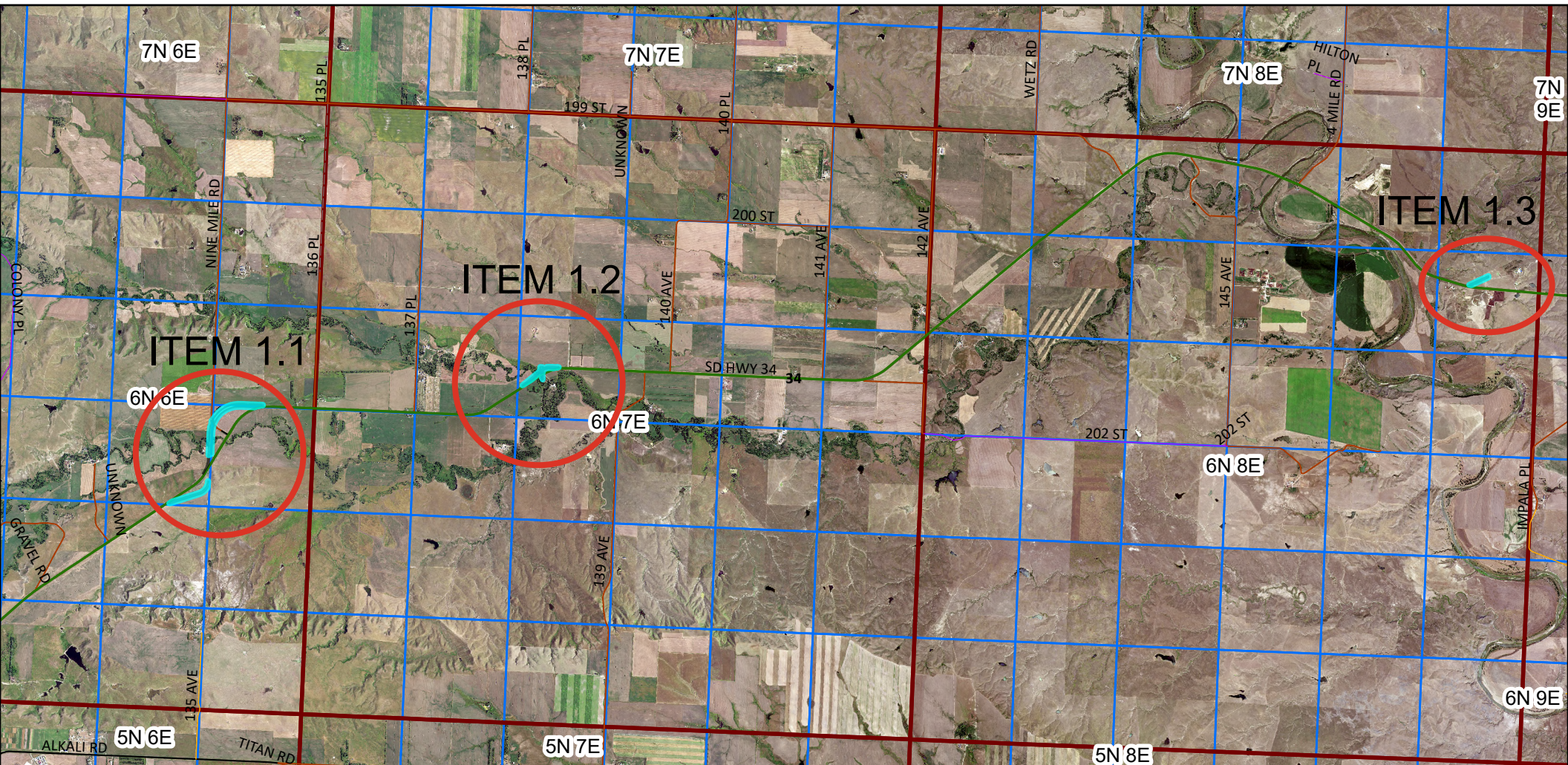
## Meade County





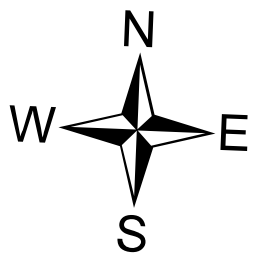
# ROW Item #1

## Proposed Abandonment



### Legend

Commission Items



0 0.75 1.5 3 Miles



# ROW Item #1

## Legal Descriptions

Lot B in Lot H2 in the SE1/4 of Section 23, Township 6 North, Range 6 East of the B.H.M., Meade County, South Dakota. (contains 0.93 acre)

Lots B and C in Lot H2 in the NW1/4 of Section 24, Township 6 North, Range 6 East of the B.H.M., Meade County, South Dakota. (Lot B contains 5.70 acres, Lot C contains 1.74 acres)

Lot A in Lot H1 in the E1/2 NE1/4 of Section 23, Township 6 North, Range 6 East of the B.H.M., Meade County, South Dakota. (contains 1.34 acres)

Lot A in Lot H1 in the SE1/4 of Section 23, Township 6 North, Range 6 East of the B.H.M., Meade County, South Dakota. (contains 3.36 acres)

Lot A in Lot H1 in the SW1/4 of Section 13, Township 6 North, Range 6 East of the B.H.M., Meade County, South Dakota. (contains 1.33 acres)

Lot A in Lot H2 in the NW1/4 SW1/4 of Section 16, Township 6 North, Range 7 East of the B.H.M., Meade County, South Dakota. (contains 0.48 acre)

Lot B in Lot H3 in the NW1/4 SW1/4 of Section 16, Township 6 North, Range 7 East of the B.H.M., Meade County, South Dakota. (contains 0.10 acre)

Lot C in Lot H3 in the NW1/4 SW1/4 of Section 16, Township 6 North, Range 7 East of the B.H.M., Meade County, South Dakota. (contains 0.26 acre)

Lot D in Lot H1 in the W1/2 SW1/4 of Section 16, Township 6 North, Range 7 East of the B.H.M., Meade County, South Dakota. (contains 1.62 acres)

Lot E in Lot H1 in the E1/2 SW1/4 of Section 16, Township 6 North, Range 7 East of the B.H.M., Meade County, South Dakota. (contains 0.67 acre)

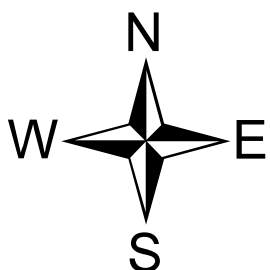
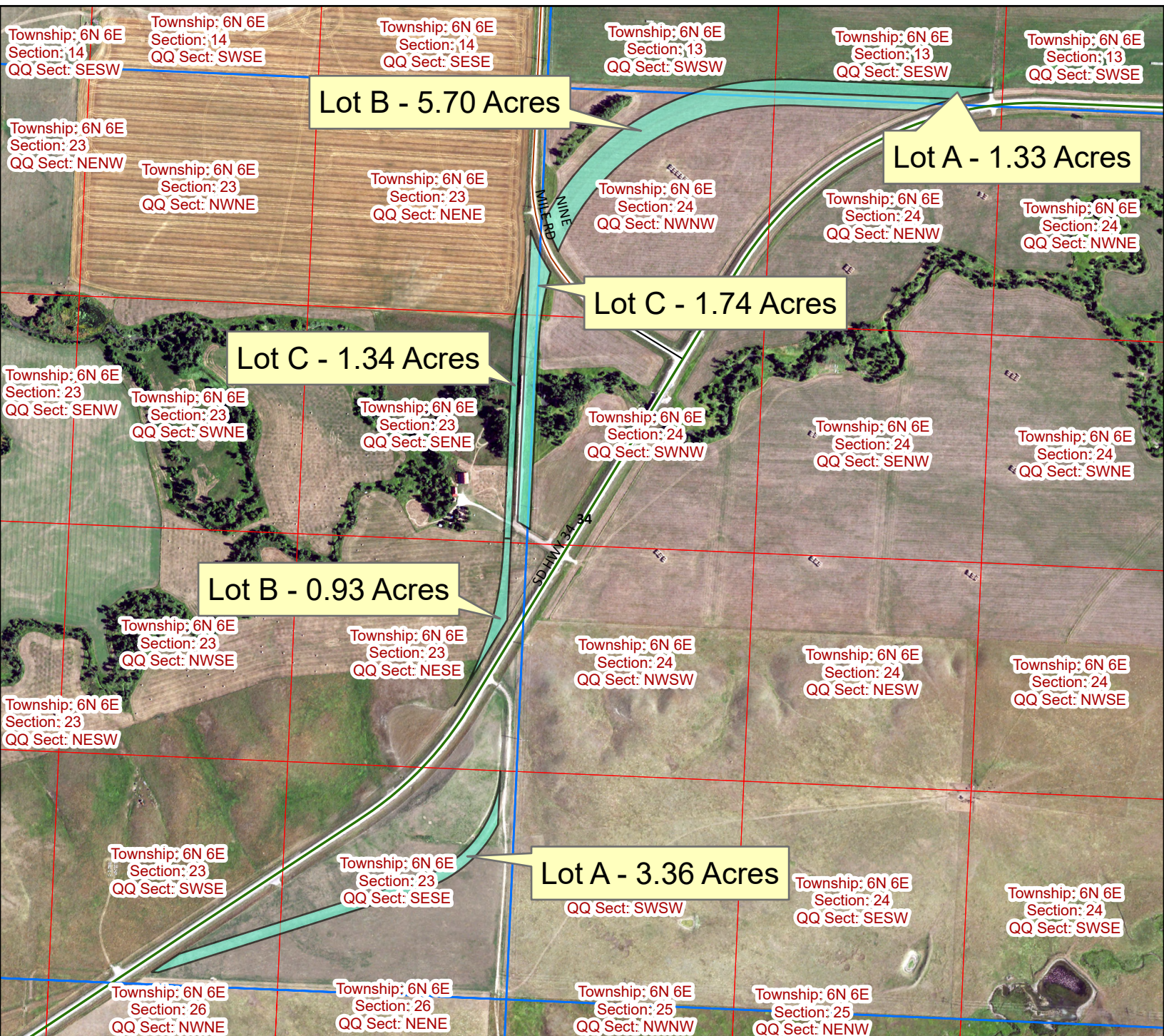
Lot A in Lot H1 in the NW1/4 of Section 16, Township 6 North, Range 7 East of the B.H.M., Meade County, South Dakota. (contains 0.39 acre)

Lot A in Lot H1 in the NW1/4 lying North of SD Highway 34 of Section 12, Township 6 North, Range 8 East of the B.H.M., Meade County, South Dakota. (contains 1.56 acres)



# ROW Item #1.1

## Proposed Abandonment



### Legend

 Commission Items

0 0.07 0.15 0.3 Miles











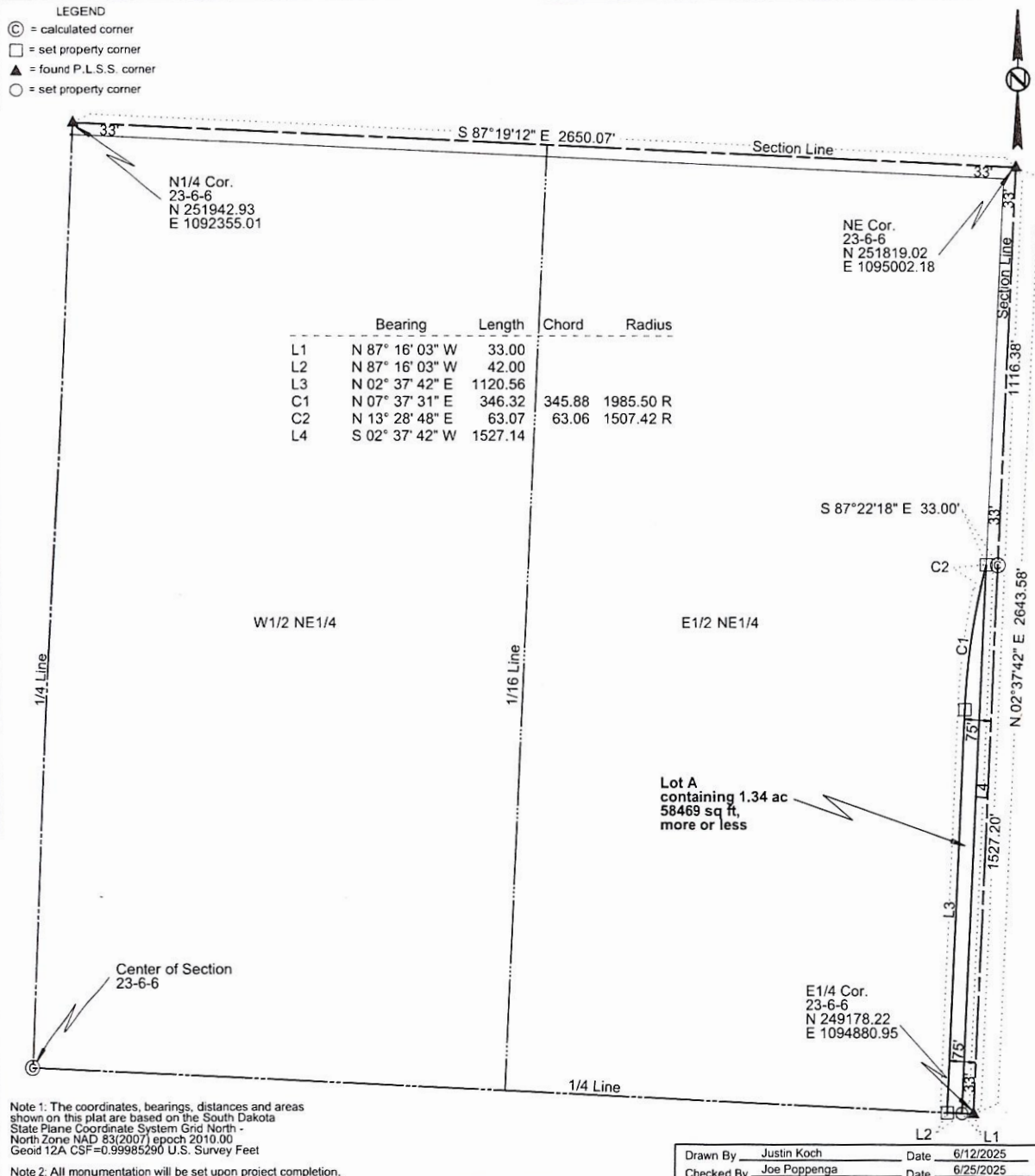
# PLAT OF LOT A

in Lot H1 in the E1/2 NE1/4 of  
Section 23 - Township 6 North - Range 6 East of the B.H.M.

MEADE COUNTY, SOUTH DAKOTA

Showing a parcel of land for highway purposes to be abandoned

Scale: 1 inch = 300 feet

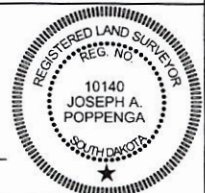


## SURVEYOR'S CERTIFICATE

I, JOSEPH A. POPPENG, Registered Land Surveyor, in and for the State of South Dakota, do hereby certify that as ordered by the South Dakota Department of Transportation the parcel of land as shown on this plat has been surveyed at my direction and under my control, and such tract of land shall be hereafter known by the lot number designated herein. The location and dimensions of the parcel are shown on this plat.

In witness whereof, I have set my hand and seal this 2nd day of July, A.D., 20 25.

Registered Land Surveyor  
Registration No. 10140



## OFFICE OF REGISTER OF DEEDS

State of South Dakota

County of \_\_\_\_\_ ss

Filed for record the \_\_\_\_\_ day of \_\_\_\_\_, A.D., 20 \_\_\_\_\_, at \_\_\_\_\_ M., and recorded in Books of Plats \_\_\_\_\_ on Page \_\_\_\_\_ therein.

02AB

Register of Deeds

by

Deputy

aban3





# PLAT OF LOT A

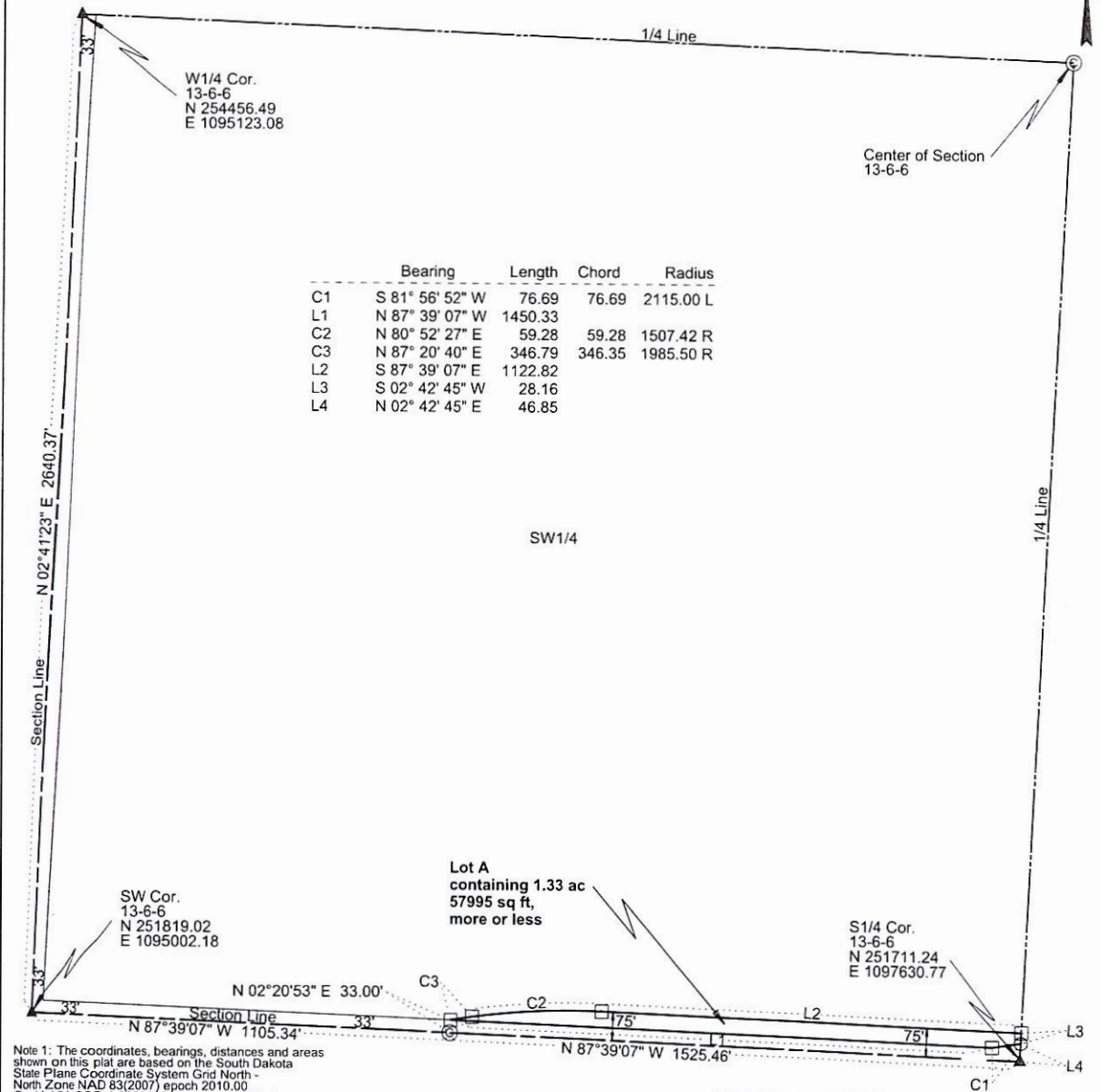
in Lot H1 in the SW1/4 of  
Section 13 - Township 6 North - Range 6 East of the B.H.M.

MEADE COUNTY, SOUTH DAKOTA

Showing a parcel of land for highway purposes to be abandoned

Scale: 1 inch = 300 feet

- LEGEND
- ⊙ = calculated corner
  - = set property corner
  - ▲ = found P.L.S.S. corner
  - = set property corner



Note 1: The coordinates, bearings, distances and areas shown on this plat are based on the South Dakota State Plane Coordinate System Grid North - North Zone NAD 83(2007) epoch 2010.00 Geoid 12A CSF=0.99985290 U.S. Survey Feet

Note 2: All monumentation will be set upon project completion.

Drawn By Justin Koch Date 6/12/2025  
Checked By Joe Poppenga Date 6/25/2025

## SURVEYOR'S CERTIFICATE

I, JOSEPH A. POPPENG, Registered Land Surveyor, in and for the State of South Dakota, do hereby certify that as ordered by the South Dakota Department of Transportation the parcel of land as shown on this plat has been surveyed at my direction and under my control, and such tract of land shall be hereafter known by the lot number designated herein. The location and dimensions of the parcel are shown on this plat.

In witness whereof, I have set my hand and seal this 2nd day of July, A.D., 20 25.

Registered Land Surveyor  
Registration No. 10140



## OFFICE OF REGISTER OF DEEDS

State of South Dakota

County of \_\_\_\_\_ ss

Filed for record the \_\_\_\_\_ day of \_\_\_\_\_, A.D., 20 \_\_\_\_\_, at \_\_\_\_\_ M., and recorded in Books of Plats \_\_\_\_\_ on Page \_\_\_\_\_ therein.

02AB

Register of Deeds

by

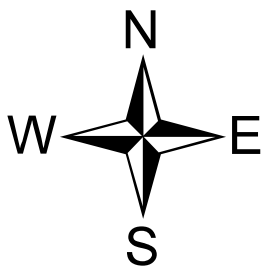
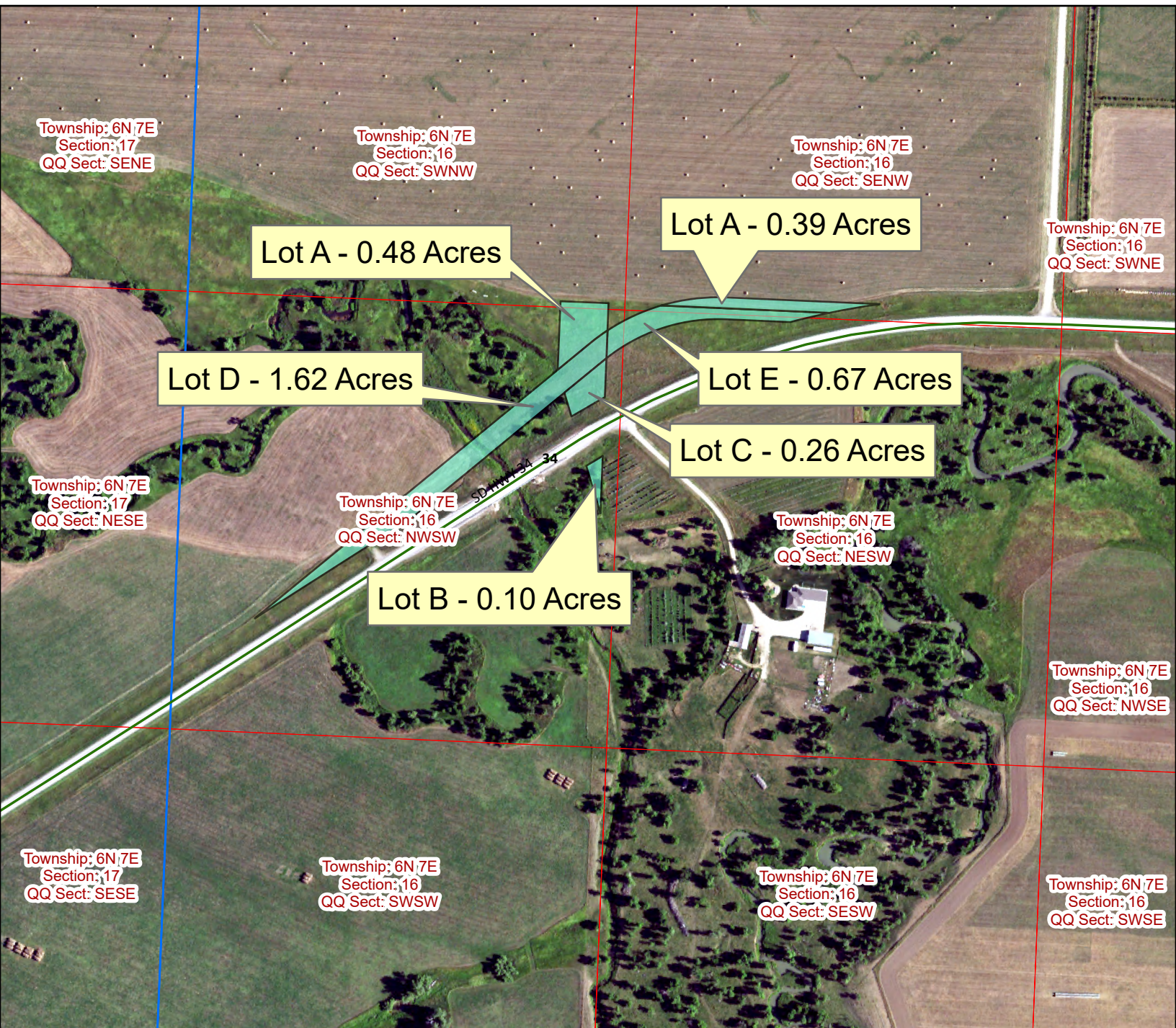
Deputy

aban5



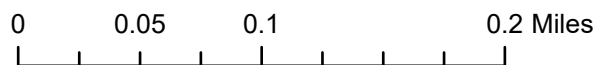
# ROW Item #1.2

## Proposed Abandonment



**Legend**

 Commission Items









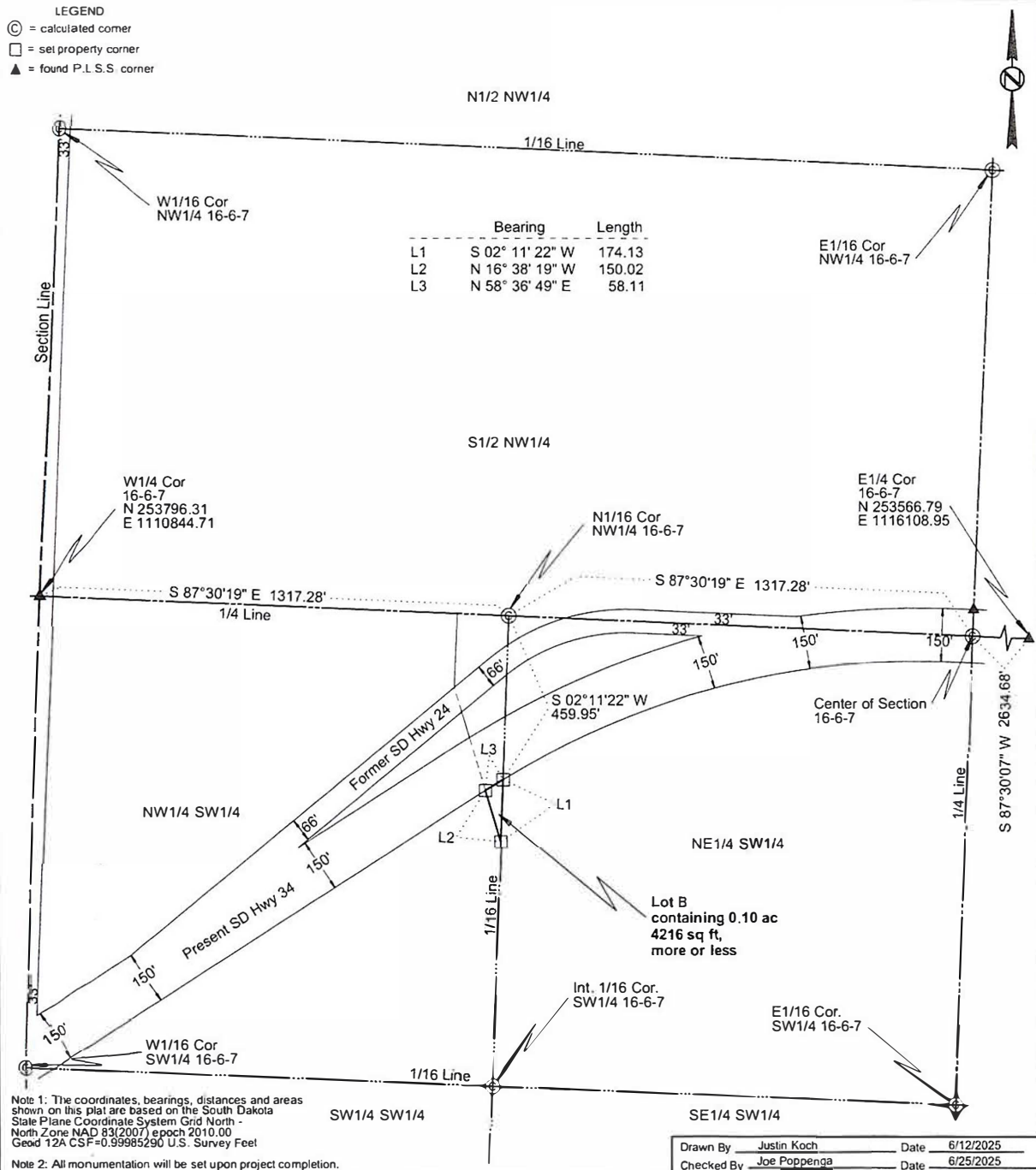
# PLAT OF LOT B

in Lot H3 in the NW1/4 SW1/4 of Section 16 -  
Township 6 North - Range 7 East of the B.H.M.

MEADE COUNTY, SOUTH DAKOTA

Showing a parcel of land for highway purposes to be abandoned

Scale: 1 inch = 300 feet

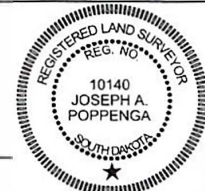


## SURVEYOR'S CERTIFICATE

I, JOSEPH A. POPPENG, Registered Land Surveyor, in and for the State of South Dakota, do hereby certify that as ordered by the South Dakota Department of Transportation the parcel of land as shown on this plat has been surveyed at my direction and under my control, and such tract of land shall be hereafter known by the lot number designated herein. The location and dimensions of the parcel are shown on this plat.

In witness whereof, I have set my hand and seal this 2nd day of July, A.D., 2025

Registered Land Surveyor  
Registration No. 10140



## OFFICE OF REGISTER OF DEEDS

State of South Dakota

County of \_\_\_\_\_ ss

Filed for record the \_\_\_\_\_ day of \_\_\_\_\_, A.D., 20\_\_\_\_, at \_\_\_\_\_ M., and recorded in Books of Plats \_\_\_\_\_ on Page \_\_\_\_\_ therein.

02AB

Register of Deeds

by

Deputy

aban7b

# PLAT OF LOT C

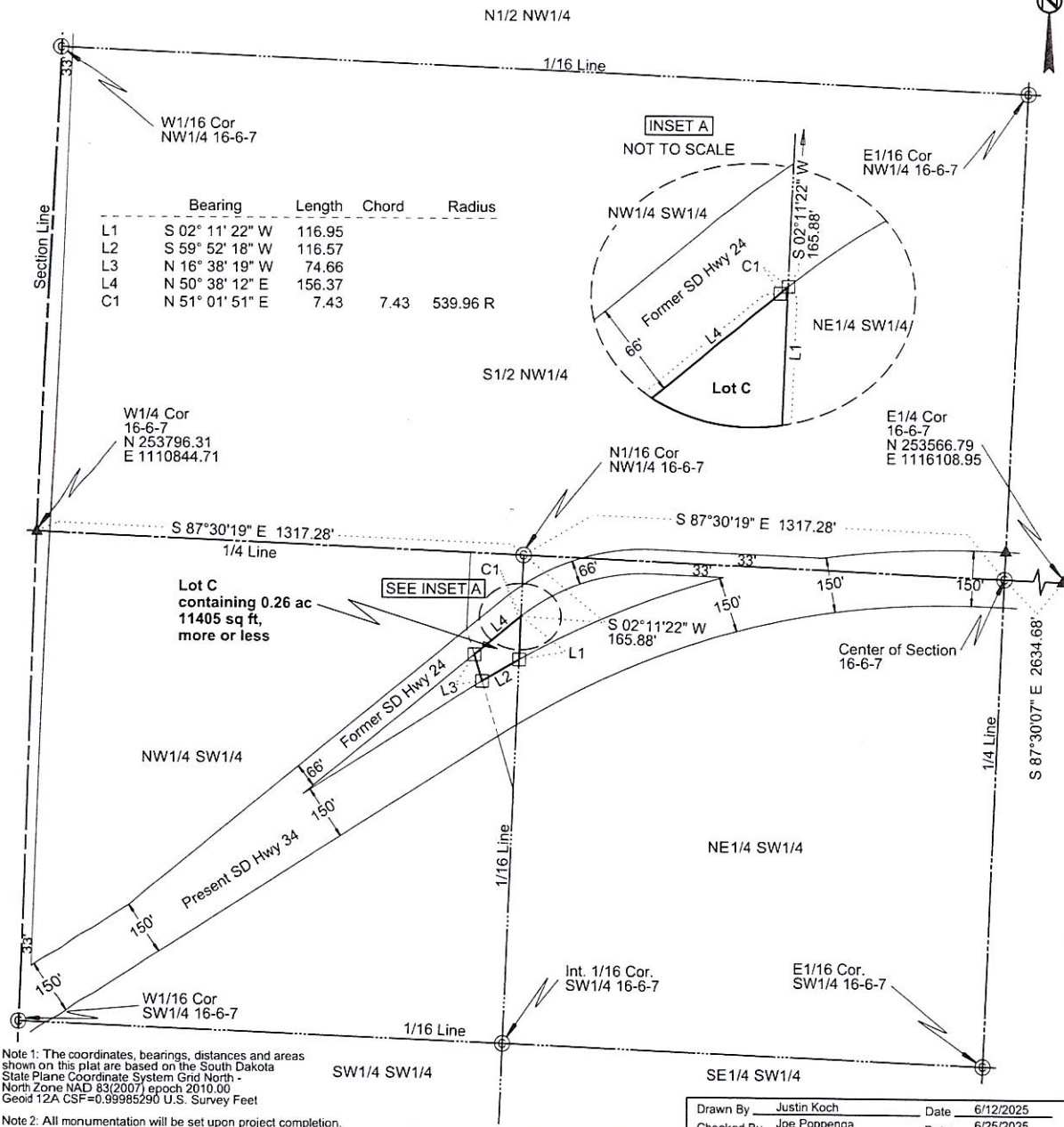
in Lot H3 in the NW1/4 SW1/4 of Section 16 -  
Township 6 North - Range 7 East of the B.H.M.

MEADE COUNTY, SOUTH DAKOTA

Showing a parcel of land for highway purposes to be abandoned

Scale: 1 inch = 300 feet

LEGEND  
 (C) = calculated corner  
 □ = set property corner  
 ▲ = found P.L.S.S. corner

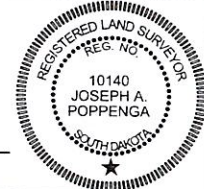


## SURVEYOR'S CERTIFICATE

I, JOSEPH A. POPPENG, Registered Land Surveyor, in and for the State of South Dakota, do hereby certify that as ordered by the South Dakota Department of Transportation the parcel of land as shown on this plat has been surveyed at my direction and under my control, and such tract of land shall be hereafter known by the lot number designated herein. The location and dimensions of the parcel are shown on this plat.

In witness whereof, I have set my hand and seal this 2nd day of July, A.D., 2025.

Registered Land Surveyor  
Registration No. 10140



## OFFICE OF REGISTER OF DEEDS

State of South Dakota

County of \_\_\_\_\_ ss

Filed for record the \_\_\_\_\_ day of \_\_\_\_\_, A.D., 20\_\_\_\_, at \_\_\_\_\_ M., and recorded in Books of Plats \_\_\_\_\_ on Page \_\_\_\_\_ therein.

02AB

Register of Deeds

by

Deputy

aban7c



# PLAT OF LOT D

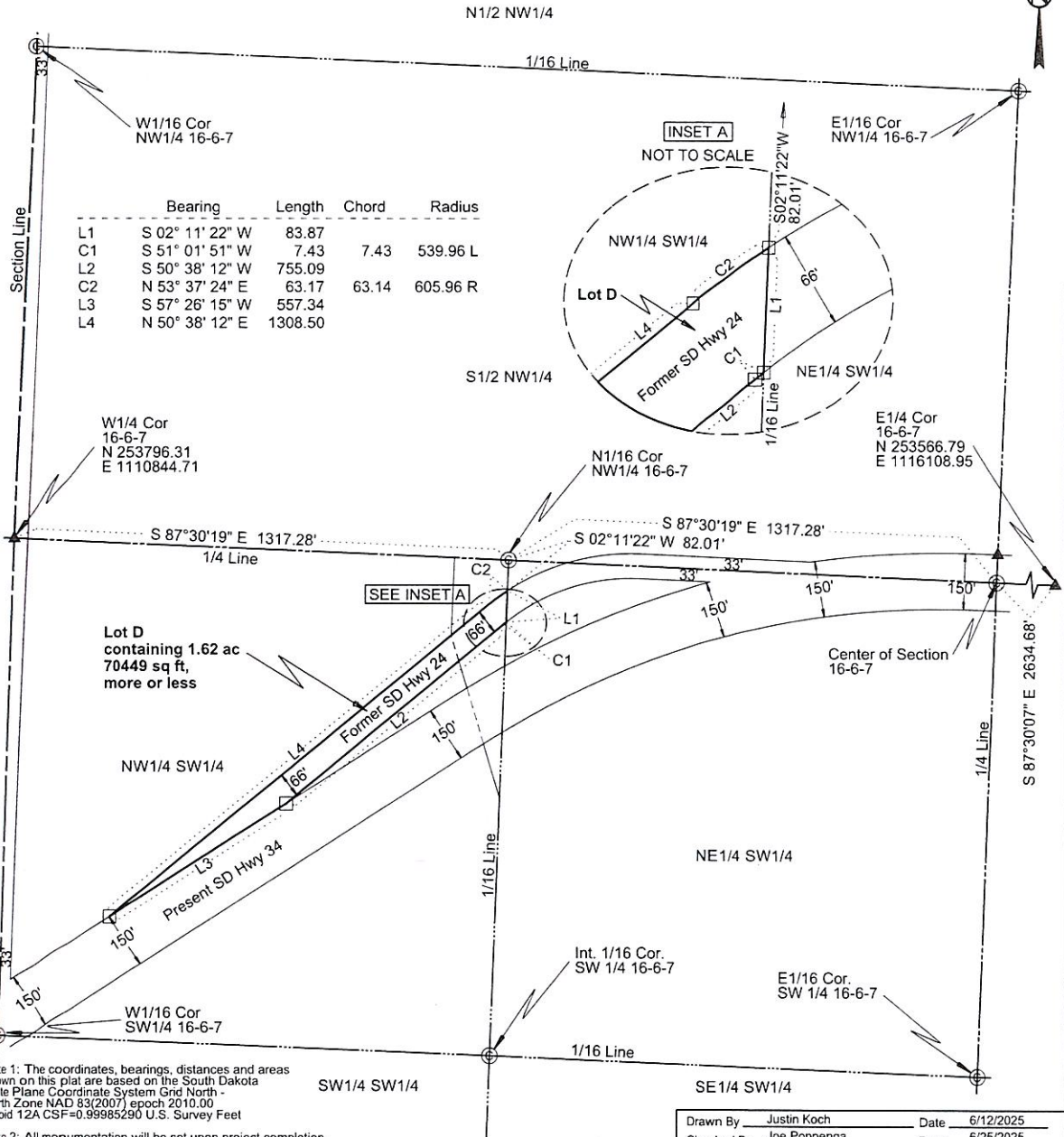
in Lot H1 in the W1/2 SW1/4 of Section 16 -  
Township 6 North - Range 7 East of the B.H.M.

MEADE COUNTY, SOUTH DAKOTA

Showing a parcel of land for highway purposes to be abandoned

Scale: 1 inch = 300 feet

LEGEND  
 (C) = calculated corner  
 □ = set property corner  
 ▲ = found P.L.S.S. corner



Note 1: The coordinates, bearings, distances and areas shown on this plat are based on the South Dakota State Plane Coordinate System Grid North - North Zone NAD 83(2011) epoch 2010.00 Geoid 12A CSF=0.99985290 U.S. Survey Feet

Note 2: All monumentation will be set upon project completion.

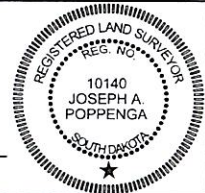
Drawn By Justin Koch Date 6/12/2025  
 Checked By Joe Poppenga Date 6/25/2025

## SURVEYOR'S CERTIFICATE

I, JOSEPH A. POPPENG, Registered Land Surveyor, in and for the State of South Dakota, do hereby certify that as ordered by the South Dakota Department of Transportation the parcel of land as shown on this plat has been surveyed at my direction and under my control, and such tract of land shall be hereafter known by the lot number designated herein. The location and dimensions of the parcel are shown on this plat.

In witness whereof, I have set my hand and seal this 2nd day of July, A.D., 20 25.

*Joseph A. Poppenga*  
 Registered Land Surveyor  
 Registration No. 10140



## OFFICE OF REGISTER OF DEEDS

State of South Dakota

County of \_\_\_\_\_ ss

Filed for record the \_\_\_\_\_ day of \_\_\_\_\_, A.D., 20 \_\_\_\_\_, at \_\_\_\_\_ M., and recorded in Books of Plats \_\_\_\_\_ on Page \_\_\_\_\_ therein.

02AB

Register of Deeds

by

Deputy

aban7d

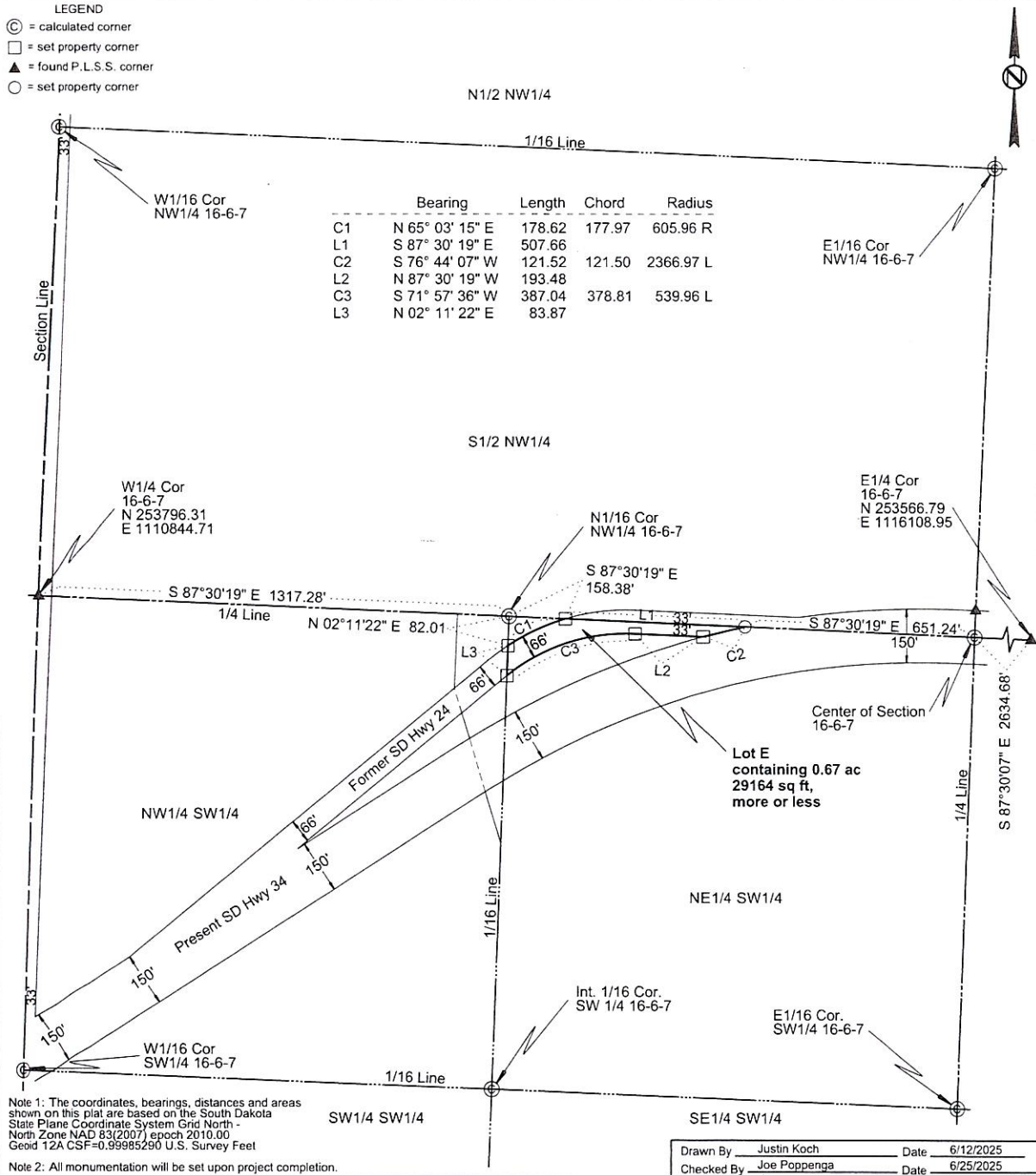
# PLAT OF LOT E

in Lot H1 in E1/2 SW1/4 of Section 16 -  
Township 6 North - Range 7 East of the B.H.M.

MEADE COUNTY, SOUTH DAKOTA

Showing a parcel of land for highway purposes to be abandoned

Scale: 1 inch = 300 feet

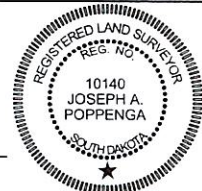


## SURVEYOR'S CERTIFICATE

I, JOSEPH A. POPPENG, Registered Land Surveyor, in and for the State of South Dakota, do hereby certify that as ordered by the South Dakota Department of Transportation the parcel of land as shown on this plat has been surveyed at my direction and under my control, and such tract of land shall be hereafter known by the lot number designated herein. The location and dimensions of the parcel are shown on this plat.

In witness whereof, I have set my hand and seal this 2nd day of July, A.D., 20 25.

Registered Land Surveyor  
Registration No. 10140



## OFFICE OF REGISTER OF DEEDS

State of South Dakota

County of \_\_\_\_\_ ss

Filed for record the \_\_\_\_\_ day of \_\_\_\_\_, A.D., 20 \_\_\_\_\_, at \_\_\_\_\_ M., and recorded in Books of Plats \_\_\_\_\_ on Page \_\_\_\_\_ therein.

02AB

Register of Deeds

by

Deputy

aban8



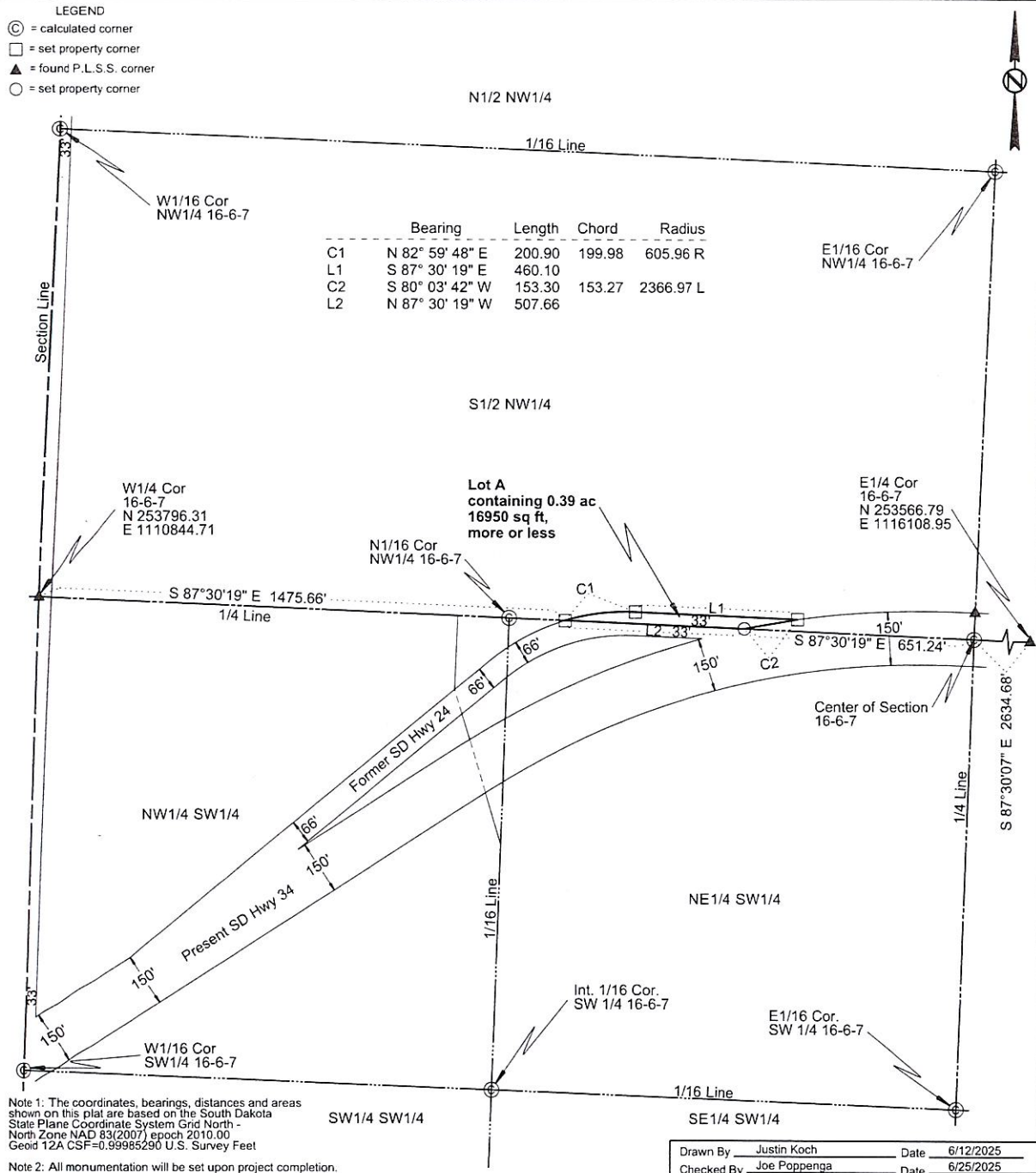
# PLAT OF LOT A

in Lot H1 in the NW1/4 of Section 16 -  
Township 6 North - Range 7 East of the B.H.M.

MEADE COUNTY, SOUTH DAKOTA

Showing a parcel of land for highway purposes to be abandoned

Scale: 1 inch = 300 feet



## SURVEYOR'S CERTIFICATE

I, JOSEPH A. POPPENG, Registered Land Surveyor, in and for the State of South Dakota, do hereby certify that as ordered by the South Dakota Department of Transportation the parcel of land as shown on this plat has been surveyed at my direction and under my control, and such tract of land shall be hereafter known by the lot number designated herein. The location and dimensions of the parcel are shown on this plat.

In witness whereof, I have set my hand and seal this 2nd day of July, A.D., 20 25.

Registered Land Surveyor  
Registration No. 10140



## OFFICE OF REGISTER OF DEEDS

State of South Dakota

County of \_\_\_\_\_ ss

Filed for record the \_\_\_\_\_ day of \_\_\_\_\_, A.D., 20 \_\_\_\_\_, at \_\_\_\_\_ M., and recorded in Books of Plats \_\_\_\_\_ on Page \_\_\_\_\_ therein.

02AB

Register of Deeds

by

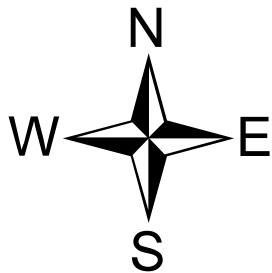
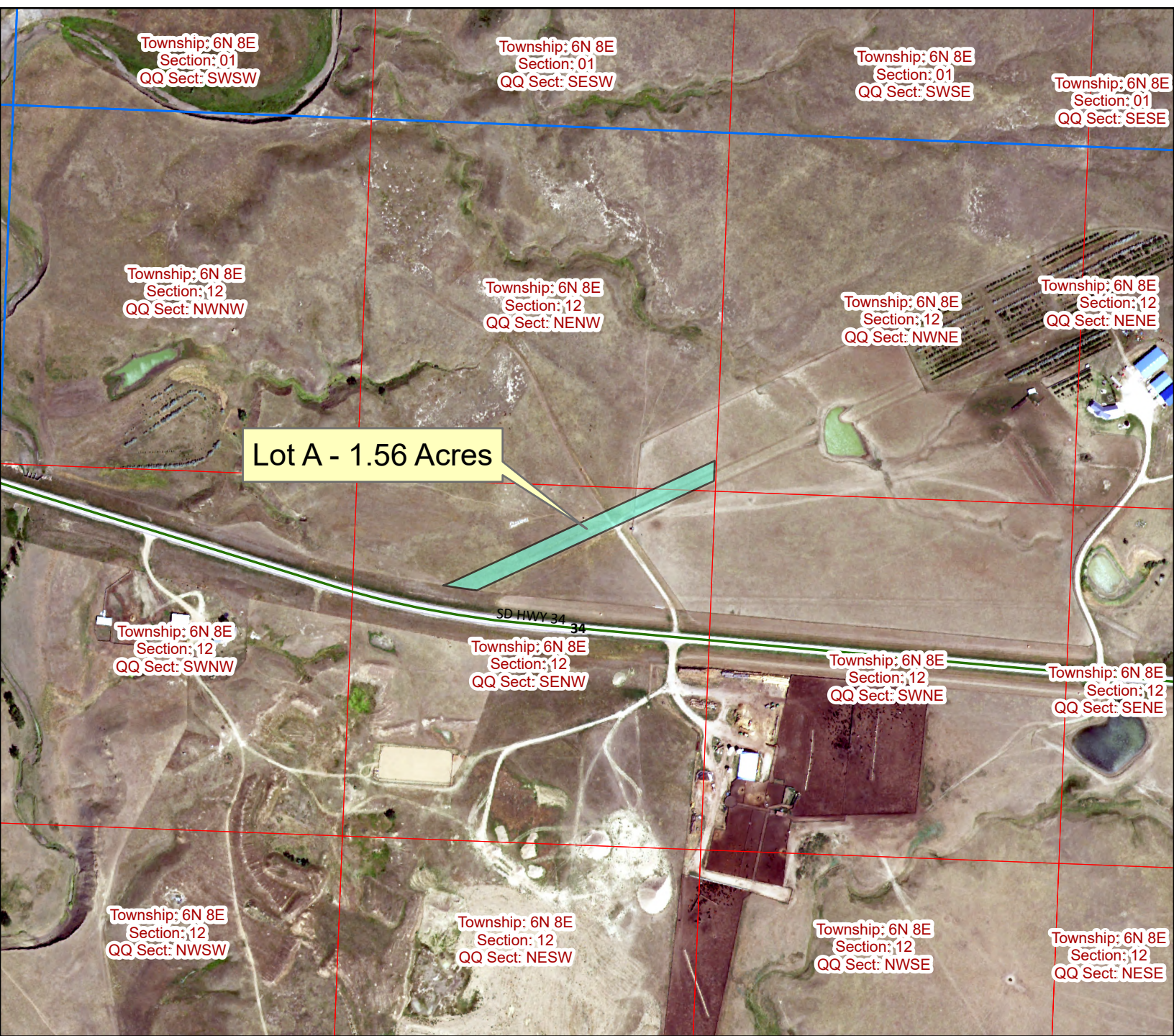
Deputy

aban9



# ROW Item #1.3

## Proposed Abandonment



### Legend

 Commission Items

0 0.05 0.1 0.2 Miles





# PLAT OF LOT A

in Lot H1 in the NW1/4 Lying North of SD Highway 34  
of Section 12 - Township 6 North - Range 8 East of the B.H.M.

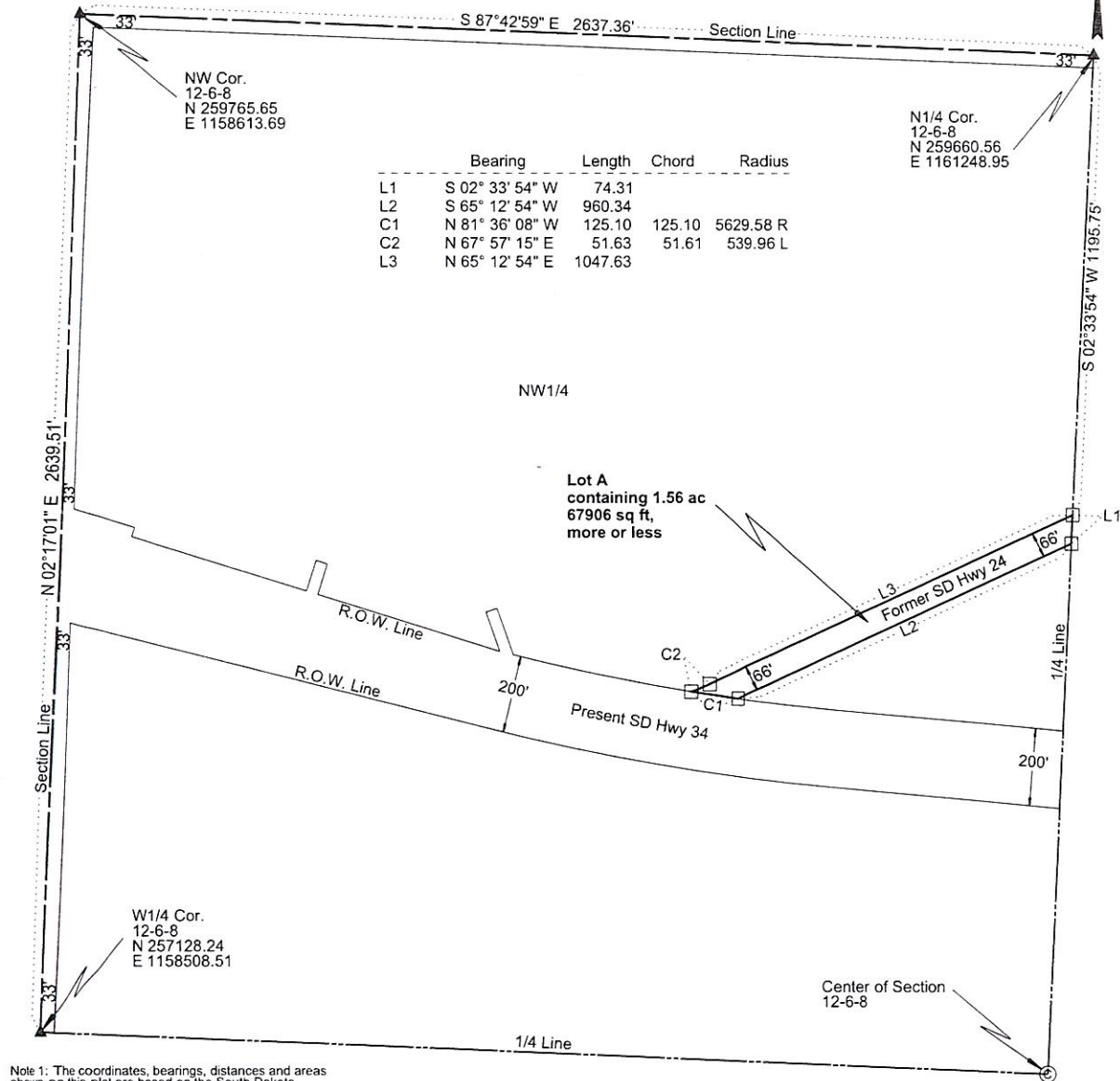
MEADE COUNTY, SOUTH DAKOTA

Showing a parcel of land for highway purposes to be abandoned

Scale: 1 inch = 300 feet

### LEGEND

- (C) = calculated corner  
 □ = set property corner  
 ▲ = found P.L.S.S. corner



Note 1: The coordinates, bearings, distances and areas shown on this plat are based on the South Dakota State Plane Coordinate System Grid North - North Zone NAD 83(2007) epoch 2010.00 Geoid 12A CSF=0.99985290 U.S. Survey Feet

Note 2: All monumentation will be set upon project completion.

Drawn By Justin Koch Date 6/12/2025  
Checked By Joe Poppenga Date 6/25/2025

## SURVEYOR'S CERTIFICATE

I, JOSEPH A. POPPENG, Registered Land Surveyor, in and for the State of South Dakota, do hereby certify that as ordered by the South Dakota Department of Transportation the parcel of land as shown on this plat has been surveyed at my direction and under my control, and such tract of land shall be hereafter known by the lot number designated herein. The location and dimensions of the parcel are shown on this plat.

In witness whereof, I have set my hand and seal this 2nd day of July A.D., 2025

Registered Land Surveyor  
Registration No. 10140



## OFFICE OF REGISTER OF DEEDS

State of South Dakota

County of \_\_\_\_\_ ss

Filed for record the \_\_\_\_\_ day of \_\_\_\_\_, A.D., 20\_\_\_\_, at \_\_\_\_\_ M., and recorded in Books of Plats \_\_\_\_\_ on Page \_\_\_\_\_ therein.

02AB

Register of Deeds

by

Deputy

aban10