

**Department of Transportation**  
**Division of Planning/Engineering**  
**Right of Way Program**  
**700 E Broadway Avenue**  
**Pierre, South Dakota 57501-2586**  
**605/773-3746 FAX: 605/773-5867**

March 18, 2019

Mike Behm,  
Director of Planning and Engineering  
Department of Transportation  
Pierre, South Dakota 57501

RE: March 28, 2019 Transportation Commission Agenda

Dear Mr. Behm:

The following items are recommended for Commission consideration:

1. Abandonment – Beadle County

This resolution will abandon the temporary easements on Beadle County Project P 0013(24), PCN 041A.

2. Abandonment – Brookings County

This resolution will abandon the temporary easements on Brookings County Project P-PH 0014(177)421, PCN 546N.

3. Abandonment – Davison County

This resolution will abandon the temporary easements on Davison County Project IM-NH-P 0021(151), PCN 041F.

4. Abandonment – McCook County

This resolution will abandon the temporary easements on McCook County Project IM-NH-P 0021(151), PCN 041F.

5. Abandonment – Pennington County

This resolution will abandon the temporary easement on Pennington County Project IM 0902(169)67, PCN 05TL

6. Abandonment – Custer County

Request Transportation Commission approval to abandon by resolution the following property acquired for highway right-of-way:

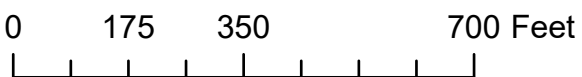
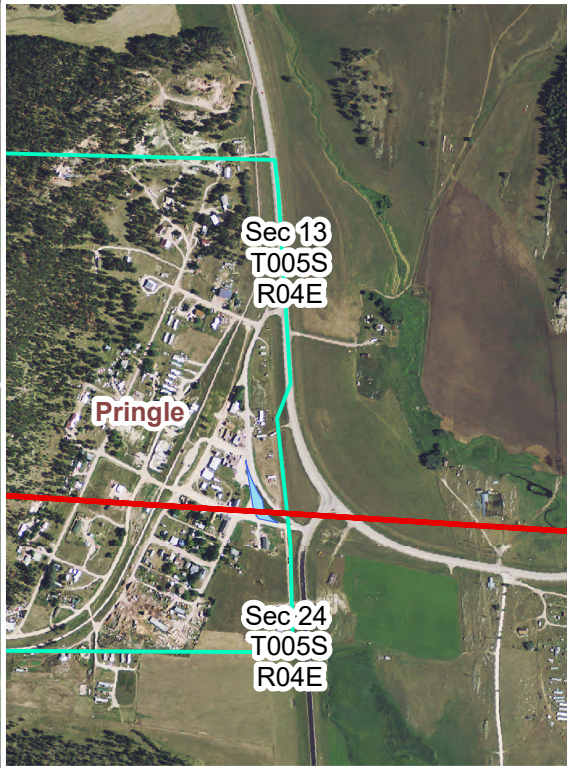
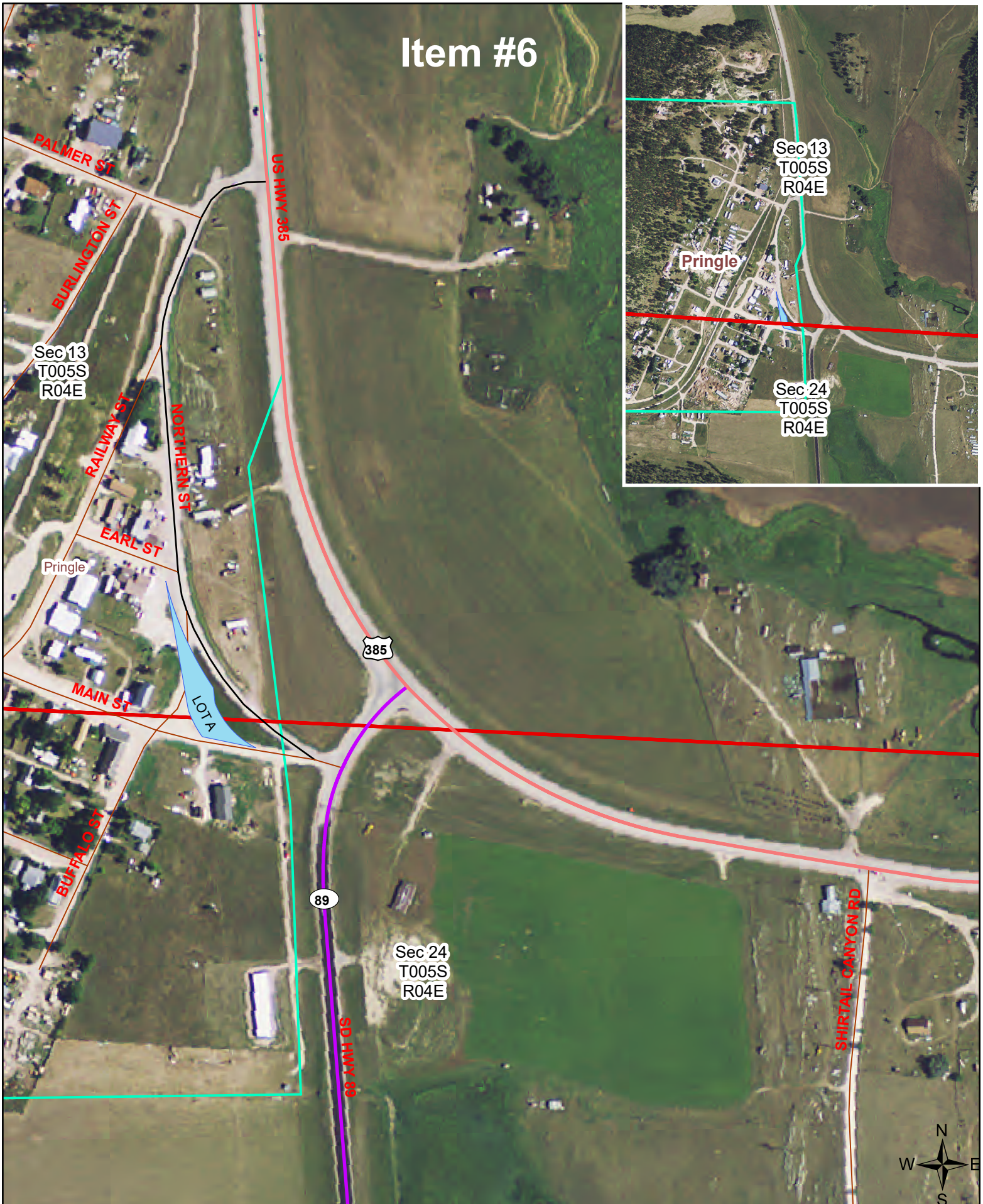
Lot A in a portion of existing SD Highway in Sections 13 and 24, Township 5 South, Range 4 East of the B.H.M., Custer County, South Dakota, containing 0.35 acre.

The above property is no longer needed for highway purposes and abandonment is recommended by DOT Rapid City Region and Custer Area. (See attachments)

Sincerely,

Scott Pretzer,  
Property Manager

# Item #6





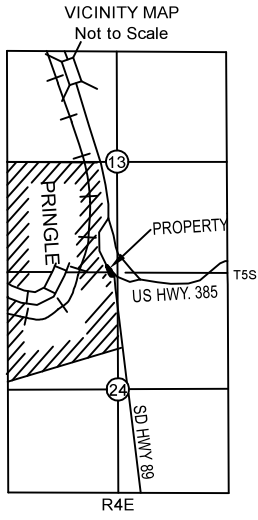
# PLAT OF LOT A

Item #6

IN A PORTION OF EXISTING SD HIGHWAY IN - SECTIONS 13 AND 24 - TOWNSHIP 5 SOUTH - RANGE 4 EAST OF THE BLACK HILLS MERIDIAN  
CUSTER COUNTY, SOUTH DAKOTA

SHOWING A PARCEL OF LAND TO BE ABANDONED

SCALE: 1 INCH = 40 FEET



COR. 1  
M.S. 1000  
NEWODA PLACER

### LEGEND

- ⊗ Found rebar w/aluminum cap marked "ANDERSEN PLS 2842"
- Found aluminum cap marked "PROPERTY CORNER"
- Found stone M.S. monument
- × Angle point not monumented

522.06' Slant lettering denotes record calls

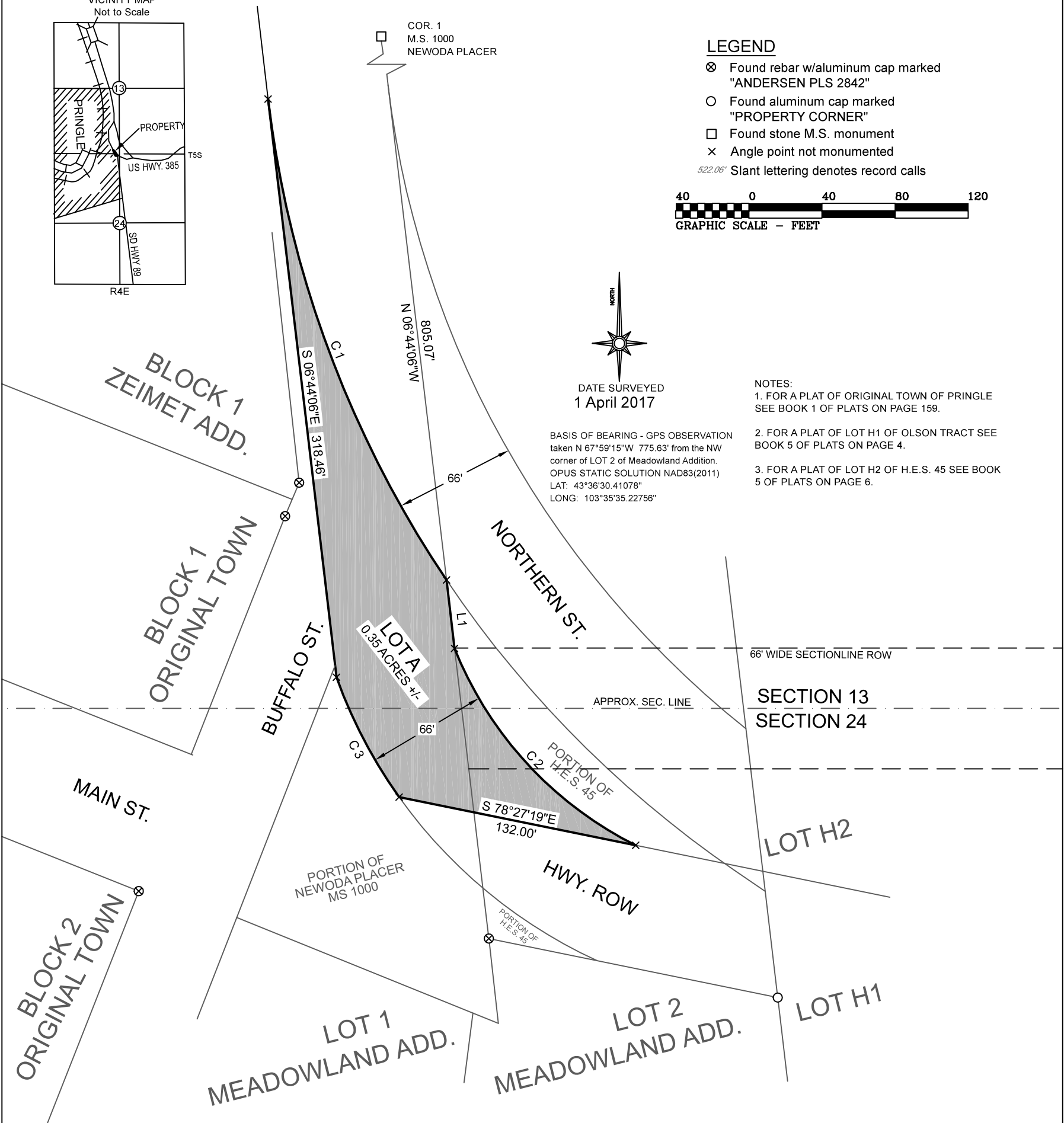


DATE SURVEYED  
1 April 2017

BASIS OF BEARING - GPS OBSERVATION taken N 67°59'15"W 775.63' from the NW corner of LOT 2 of Meadowland Addition. OPUS STATIC SOLUTION NAD83(2011) LAT: 43°36'30.41078" LONG: 103°35'35.22756"

### NOTES:

1. FOR A PLAT OF ORIGINAL TOWN OF PRINGLE SEE BOOK 1 OF PLATS ON PAGE 159.
2. FOR A PLAT OF LOT H1 OF OLSON TRACT SEE BOOK 5 OF PLATS ON PAGE 4.
3. FOR A PLAT OF LOT H2 OF H.E.S. 45 SEE BOOK 5 OF PLATS ON PAGE 6.



Course	Bearing	Distance
L1	S 06°44'06" E	37.70'

Curve	Radius	Tangent	Length	Delta	Degree	Chord	Chord Bear.
C1	596.21'	144.32'	283.19'	27°12'52"	9°36'36"	280.53'	S 20°20'32" E
C2	205.73'	78.25'	149.55'	41°39'01"	27°51'00"	146.28'	S 42°35'42" E
C3	271.73'	37.30'	74.14'	15°38'02"	21°05'08"	73.92'	S 27°37'30" E

### SURVEYOR'S CERTIFICATE

I, John D. McBride, Registered Land Surveyor No. 5906, in and for the State of South Dakota, do hereby certify that as ordered by the South Dakota Department of Transportation the parcel of land as shown on this plat has been surveyed at my direction and under my control, and such parcel of land shall be hereafter known by the lot number designated herein. The location and dimensions of the parcel are shown on this plat.

IN WITNESS WHEREOF, I hereunto set my hand and Seal. Dated this \_\_\_ day of \_\_\_\_\_, 2019.

South Dakota Registered Land Surveyor \_\_\_\_\_ Registration No. 5906

Attachment #8

### OFFICE OF THE REGISTER OF DEEDS

State of South Dakota  
County of Custer  
Filed for record the \_\_\_ day of \_\_\_\_\_, A.D., 20\_\_\_, at \_\_\_ o'clock \_\_\_ M., and recorded in Book of Plats \_\_\_ on Page \_\_\_

Register of Deeds of Custer County \_\_\_\_\_ By: \_\_\_\_\_ Deputy

Prepared by  
**ANDERSEN ENGINEERS**  
*Land Surveyors, Professional Engineering, & Environmental Consultants*

Drawn by DR	Date 3/7/2019	P.O. Box 446 Edgemont, SD 57735 (605)-662-5500
Approved by McB	Date 3/8/2019	andersenengineers@gwtc.net
Scale 1"=50'	Sheet 1 of 1	File Name: PRINGLE_2017