



Department of Transportation
Division of Planning/Engineering
Right of Way Program
700 E Broadway Avenue
Pierre, South Dakota 57501-2586
605/773-3746 FAX: 605/773-5867

June 15, 2021

Mike Behm,
Director of Planning and Engineering
Department of Transportation
Pierre, South Dakota 57501

RE: June 24, 2021 Transportation Commission Agenda

Dear Mr. Behm:

The following items are recommended for Commission consideration:

1. Transfer – Jones County

Request Transportation Commission approval to transfer by resolution to Jones County the following property acquired for highway right-of-way:

Lot A and Lot B in a portion of the 66' previously acquired highway right of way located in the NE1/4 NW1/4, Lot H2 in the NE1/4 NW1/4 and Lot H5 in the NE1/4 NW1/4; all of Section 20, Township 3 South, Range 29 East of the B.H.M., Jones County, South Dakota.

Lot A contains 0.35 acre, more or less. Lot B contains 1.83 acres, more or less.

The above property would be transferred to Jones County and Jones County would accept ownership, jurisdiction, operational and maintenance responsibilities.

Pierre Area DOT recommends the transfer. (See attachments)

2. Request Transportation Commission approval to transfer by resolution to the city of Sioux Falls the following property acquired for highway right-of-way:

A portion of N. Cliff Avenue from Benson Rd. to E. 10th St. in Sioux Falls, Minnehaha County, South Dakota, legally described as follows:

Lot H2 in Lot 18 in Block 4 of Morningside First Addition to the City of Sioux Falls, Minnehaha County, South Dakota, except the South 10 feet thereof and except Lot H1 of Lot 18. Said Lot H2 contains 624 sq. ft., more or less. Deed Book 435, Pages 840-841. Plat Book 57, Page 1.

Lot H1 of Lot 18, except the South 10 feet of Block 4 of Morningside First Addition to Sioux Falls, Minnehaha County, South Dakota. Said Lot H1 contains 0.01 acre, more or less. Plat Book 31, Page 39.

Lots H2 in Lots 4, 5, and 6 in Block 1 of Phillip's Addition to East Sioux Falls, Minnehaha County, South Dakota, except the South 7 feet of said Lot 6. Said Lot H2 in Lot 4 contains 132 sq. ft., more or less, said Lot H2 in Lot 5 contains 137 sq. ft., more or less, and said Lot H2 in Lot 6 contains 906 sq. ft., more or less. Deed Book 450, Page 132 and Deed Book 288, Page 443. Plat Book 56, Page 329.

Lot H1 of Lots 4, 5 and 6 except the South 7 feet of Lot 6 of Block 1 of Phillip's Addition to Sioux Falls, Minnehaha County, South Dakota. Said Lot H1 contains 0.01 acre, more or less. Plat Book 31, Page 32.

West 3 feet of the South 33 feet of Lot 2 and West 3 feet of Lot 3 of Block 1 of Phillip's Addition to Sioux Falls, Minnehaha County, South Dakota. Contains 0.01 acre, more or less.

Lot H1 of Lot 1 in Block 4 of Morningside First Addition to Sioux Falls, Minnehaha County, South Dakota. Said Lot H1 contains 0.01 acre, more or less. Plat Book 31, Page 37.

West 3 feet of Lot 1 and the West 3 feet of the North 11 feet of Lot 2 of Block 1 of Phillip's Addition to East Sioux Falls, Minnehaha County, South Dakota. Contains 0.01 acre, more or less.

Lot H1 of the West 44 feet of the South 88 feet of the SW1/4 of Block 1 of East Sioux Falls, Minnehaha County, South Dakota. Said Lot H1 contains 0.01 acre, more or less. Plat Book 31, Page 20.

East 3 feet of Lot 18 in Block 1 of Morningside First Addition to Sioux Falls, Minnehaha County, South Dakota. Contains 0.01 acre, more or less.

West 3 feet of the North 44 feet of the SW1/4 of Block 1 of East Sioux Falls Addition to Sioux Falls, Minnehaha County, South Dakota. Contains 0.01 acre, more or less.

West 3 feet of the South 44 feet of the NW1/4 of Block 1 of the East Sioux Falls Addition to Sioux Falls, Minnehaha County, South Dakota. Contains 0.01 acre, more or less.

East 3 feet of the South 71 feet of Lot 1 of Block 1 Morningside First Addition to Sioux Falls, Minnehaha County, South Dakota. Contains 0.01 acre, more or less.

West 3 feet of the North 88 feet of the NW1/4 of Block 1 of the East Sioux Falls Addition to Sioux Falls, Minnehaha County, South Dakota. Contains 0.01 acre, more or less.

Lot H1 in the SE1/4 and S 2/3 of the SW1/4 of Block 2 of East Sioux Falls Addition to Sioux Falls, Minnehaha County, South Dakota. Said Lot H1 contains 0.01 acre, more or less. Plat Book 31, Page 33.

East three feet of Lots 19 and 20, except the West 41 feet thereof, in Block 1 of the Greater Sioux Falls Addition to Sioux Falls, Minnehaha County, South Dakota. Contains 0.01 acre, more or less.

West 3 feet of the North 44 feet of the SW1/4 of Block 2 in East Sioux Falls Addition to Sioux Falls, Minnehaha County, South Dakota. Said parcel contains 0.01 acre, more or less.

East 3 feet of Lot 18 in Block 1 of Greater Sioux Falls Addition to Sioux Falls, Minnehaha County, South Dakota. Contains 0.01 acre, more or less.

West 3 feet of the N1/2 of Block 2 of East Sioux Falls Addition to Sioux Falls, Minnehaha County, South Dakota. Contains 0.01 acre, more or less.

Lot H2 of Block 2 except the West 3 feet of the North 176 feet and Lot H1 of East Sioux Falls to the City of Sioux Falls, Minnehaha County, South Dakota. Said Lot H2 contains 398.22 sq. ft., more or less. Plat Book 52, Page 87.

Lot H2 of Lot 18 except the East 3 feet of Block 1 of Greater Sioux Falls, an addition to the City of Sioux Falls, Minnehaha County, South Dakota. Said Lot H2 contains 19.67 sq. ft., more or less. Plat Book 52, Page 25.

Lot H1 of Lot 17 of Block 1 of Greater Sioux Falls, an addition to the City of Sioux Falls, Minnehaha County, South Dakota. Said Lot H1 contains 190.18 sq. ft., more or less. Plat Book 52, Page 23.

Lot H1 of Lot 16 of Block 1 of Greater Sioux Falls, an addition to the City of Sioux Falls, Minnehaha County, South Dakota. Said Lot H1 contains 229.53 sq. ft., more or less. Plat Book 52, Page 54.

Lot H1 of Lot 15 of Block 1 of Greater Sioux Falls, an addition to the City of Sioux Falls, Minnehaha County, South Dakota. Said Lot H1 contains 268.88 sq. ft., more or less. Plat Book 52, Page 116.

Lot H1 of Lot 14 of Block 1 of Greater Sioux Falls, an addition to the City of Sioux Falls, Minnehaha County, South Dakota. Said Lot H1 contains 308.22 sq. ft., more or less. Plat Book 52, Page 165.

South 88 feet of the SW1/4, except the East 52 feet thereof, in Block 3 of East Sioux Falls, Minnehaha County, South Dakota. Said Lot H-1 contains 55.9 sq. ft., more or less. Plat Book 52, Page 95.

Lot H1 of Lot 13 of Block 1 of Greater Sioux Falls, an addition to the City of Sioux Falls, Minnehaha County, South Dakota. Said Lot H1 contains 327.9 sq. ft., more or less. Plat Book 52, Page 101.

Lot H1 of Lot 12 of Block 1 of Greater Sioux Falls, an addition to the City of Sioux Falls, Minnehaha County, South Dakota. Said Lot H1 contains 327.9 sq. ft., more or less. Plat Book 52, Page 164.

Lot H1 of the North 44 feet of the SW1/4 of Block 3 of East Sioux Falls to the City of Sioux Falls, Minnehaha County, South Dakota. Said Lot H1 contains 330 sq. ft., more or less. Plat Book 52, Page 38.

Lot H1 of Lot 11 Block 1 of Greater Sioux Falls, an Addition to the City of Sioux Falls, Minnehaha County, South Dakota. Said Lot H1 contains 327.9 square feet, more or less. Plat Book 52, Page 37.

Lot H1 of the South 44 feet of the NW1/4 of Block 3 of East Sioux Falls to the City of Sioux Falls, Minnehaha County, South Dakota. Said Lot H1 contains 330 sq. ft., more or less. Plat Book 52, Page 7.

Lot H1 of Lot 10 of Block 1 of Greater Sioux Falls, an addition to the City of Sioux Falls, Minnehaha County, South Dakota. Said Lot H1 contains 327.9 sq. ft., more or less. Plat Book 52, Page 10.

Lot H1 of the North 44 feet of the South 88 feet of the NW1/4 of Block 3 of East Sioux Falls to the City of Sioux Falls, Minnehaha County, South Dakota. Said Lot H1 contains 330 sq. ft., more or less. Plat Book 52, Page 168.

Lot H1 of Lot 9 of Block 1 of Greater Sioux Falls, an addition to the City of Sioux Falls, Minnehaha County, South Dakota. Said Lot H1 contains 327.9 sq. ft., more or less. Plat Book 52, Page 9.

Lot H1 of the North 44 feet of NW1/4 except the East 44 feet thereof Block 3 of East Sioux Falls to the City of Sioux Falls, Minnehaha County, South Dakota. Said Lot H1 contains 330 sq. ft., more or less. Plat Book 52, Page 167.

Lot H1 of Lot 8 of Block 1 of Greater Sioux Falls, an addition to the City of Sioux Falls, Minnehaha County, South Dakota. Said Lot H1 contains 327.9 sq. ft., more or less. Plat Book 52, Page 8.

Lot H1 of Lot 7 of Block 1 of Greater Sioux Falls, an addition to the City of Sioux Falls, Minnehaha County, South Dakota. Said Lot H1 contains 327.9 sq. ft., more or less. Plat Book 52, Page 94.

Lot H1 of the West 66 feet of the South 44 feet of the SW1/4 of Block 4 of East Sioux Falls to the City of Sioux Falls, Minnehaha County, South Dakota. Said Lot H1 contains 330 sq. ft., more or less. Plat Book 52, Page 11.

Lot H1 of Lot 6 of Block 1 of Greater Sioux Falls, an Addition to the City of Sioux Falls, Minnehaha County, South Dakota. Said Lot H1 contains 327.9 sq. ft., more or less. Plat Book 52, Page 93.

North 44 feet of the South 88 feet of SW1/4 of Block 4 of East Sioux Falls to the City of Sioux Falls, Minnehaha County, South Dakota. Said Lot H1 contains 330 sq. ft., more or less. Plat Book 54, Page 238.

Lot H1 of Lot 5 of Block 1 of Greater Sioux Falls, an Addition to the City of Sioux Falls, South Dakota. Said Lot H1 contains 327.9 sq. ft., more or less. Plat Book 52, Page 118.

Lot H1 of the North 44 feet of SW1/4 of Block 4 of East Sioux Falls to the City of Sioux Falls, Minnehaha County, South Dakota. Said Lot H1 contains 330 sq. ft., more or less. Plat Book 52, Page 163.

Lot H1 of Lot 4 of Block 1 of Greater Sioux Falls, an addition to the City of Sioux Falls, Minnehaha County, South Dakota. Said Lot H1 contains 327.9 sq. ft., more or less. Plat Book 52, Page 22.

Lot H1 of the North 7.72 feet of Lot 3 and South 36 feet of Lot 3 of Block 1 of Greater Sioux Falls, an Addition to the City of Sioux Falls, Minnehaha County, South Dakota. Said Lot H1 contains 327.9 sq. ft., more or less. Plat Book 52, Page 6.

Lot H1 of the E. 64' Lots 1 and 2 of Block 1 of Greater Sioux Falls, an Addition to the City of Sioux Falls, Minnehaha County, South Dakota. Said Lot H1 contains 645.2 sq. ft., more or less. Plat Book 52, Page 119.

Lot H1 of the W 54' of Lots 13, 14 and 15 and W 54' of the S 10' Lot 16 of Block 1 of Lawler's Addition to the City of Sioux Falls, Minnehaha County, South Dakota. Said Lot H1 contains 647.30 sq. ft., more or less. Plat Book 52, Page 106.

Lot H1 of the East 52 feet of Lots 17 and 18 of Block 3 of City View Addition to the City of Sioux Falls, Minnehaha County, South Dakota. Said Lot H1 contains 660 sq. ft., more or less. Plat Book 52, Page 36.

Lot H1 of the North 15 feet of Lot 16 and all of Lot 17 of Block 1 of Lawler's Addition to the City of Sioux Falls, Minnehaha County, South Dakota. Said Lot H1 contains 300 sq. ft., more or less. Plat Book 52, Page 120.

Lot 16 of Block 4 of City View Addition to the City of Sioux Falls, Minnehaha County, South Dakota. Said Lot H1 contains 330 sq. ft., more or less. Plat Book 52, Page 81.

Lot H1 of Lots 18 and 19 of Block 1 of Lawler's Addition to the City of Sioux Falls, Minnehaha County, South Dakota. Said Lot H1 contains 375 sq. ft., more or less. Plat Book 52, Page 32.

Lot H1 of Lot 15 of Block 4 of City View Addition to the City of Sioux Falls, Minnehaha County, South Dakota. Said Lot H1 contains 330 sq. ft., more or less. Plat Book 52, Page 35.

Lot H1 of Lot 20 and S. 18' Lot 21 of Block 1 of Lawler's Addition to the City of Sioux Falls, Minnehaha County, South Dakota. Said Lot H1 contains 322.5 sq. ft., more or less. Plat Book 52, Page 91.

Lot 14 of Block 4 of City View Addition to the City of Sioux Falls, Minnehaha County, South Dakota. Said Lot H1 contains 330 sq. ft., more or less. Plat Book 52, Page 34.

Lot H1 of the North 7 feet of Lot 21, all of Lot 22 and South 9 feet of Lot 23 of Block 1 of Lawler's Addition to the City of Sioux Falls, Minnehaha County, South Dakota. Said Lot H1 contains 307.5 sq. ft., more or less. Plat Book 52, Page 77.

Lot H1 of Lot 13 of Block 4 of City View Addition to the City of Sioux Falls, Minnehaha County, South Dakota. Said Lot H1 contains 330 sq. ft., more or less. Plat Book 52, Page 33.

Lot H1 of the North 16 feet of Lot 23 and all of Lot 24 of Block 1 of Lawler's Addition to the City of Sioux Falls, Minnehaha County, South Dakota. Said Lot H1 contains 307.5 sq. ft., more or less. Plat Book 52, Page 100.

Lot H1 of the South 22 feet of Lot 11 and all of Lot 12 of Block 4 of City View Addition to the City of Sioux Falls, Minnehaha County, South Dakota. Said Lot H1 contains 495 sq. ft., more or less. Plat Book 52, Page 144.

Lot H1 of the South 11 Feet of Lot 10 and the N1/2 of Lot 11 of Block 4 of City View Addition to the City of Sioux Falls, Minnehaha County, South Dakota. Said Lot H1 contains 198 sq. ft., more or less. Plat Book 52, Page 47.

Lot H1 of the North 33 Feet of Lot 10 of Block 4 in City View Addition to the City of Sioux Falls, Minnehaha County, South Dakota. Said Lot H1 contains 198 sq. ft., more or less. Plat Book 52, Page 28.

Lot H1 of Lots 20 thru 23 and South 6 feet of Lot 24 of Block 2 of Lawler's Addition to the City of Sioux Falls, Minnehaha County, South Dakota. Said Lot H1 contains 858.75 sq. ft., more or less. Plat Book 52, Page 80.

Lot 8 of Block 3 of City View Addition to the City of Sioux Falls, Minnehaha County, South Dakota. Said Lot H1 contains 300 sq. ft., more or less. Plat Book 52, Page 39.

Lot H1 of Lot 25 and North 19.00 feet of Lot 24 of Block 2 of Lawler's Addition to the City of Sioux Falls, Minnehaha County, South Dakota. Said Lot H1 contains 330 sq. ft., more or less. Plat Book 52, Page 140.

Lot H1 of Lot 7 of Block 3 of City View Addition to the City of Sioux Falls, Minnehaha County, South Dakota. Said Lot H1 contains 300 sq. ft., more or less. Plat Book 52, Page 99.

Lot H1 of Lots 26, 27, and 28 of Block 2 of Lawler's Addition to the City of Sioux Falls, Minnehaha County, South Dakota. Said Lot H1 contains 562.5 sq. ft., more or less. Plat Book 52, Page 19.

Lot H1 of Lot 6 of Block 3 of City View Addition to the City of Sioux Falls, Minnehaha County, South Dakota. Said Lot H1 contains 300 sq. ft., more or less. Plat Book 52, Page 141.

Lot 5 of Block 3 of City View Addition to Sioux Falls, Minnehaha County, South Dakota. Said Lot E contains 300 sq. ft., more or less. Plat Book 52, Page 17.

Lot H1 of Lots 29 and 30 of Block 2 of Lawler's Addition to the City of Sioux Falls, Minnehaha County, South Dakota. Said Lot H1 contains 375 sq. ft., more or less. Plat Book 52, Page 162.

Lot H1 of Lot 6 of Block 8 of Dakota Improvement Company's Second Addition to the City of Sioux Falls, Minnehaha County, South Dakota. Said Lot H1 contains 322.5 sq. ft., more or less. Plat Book 52, Page 98.

Lot H1 of Lots 31 and 32 of Block 2 of Lawler's Addition to the City of Sioux Falls, Minnehaha County, South Dakota. Said Lot H1 contains 375 sq. ft., more or less. Plat Book 52, Page 18.

Lot H1 of Lot 5 of Block 8 of Dakota Improvement Company's Second Addition to the City of Sioux Falls, Minnehaha County, South Dakota. Said Lot H1 contains 322.5 sq. ft., more or less. Plat Book 52, Page 21.

Lot H1 of Lots 33, 34, and 35 of Block 2 of Lawler's Addition to the City of Sioux Falls, Minnehaha County, South Dakota. Said Lot H1 contains 562.5 sq. ft., more or less. Plat Book 52, Page 17.

Lot H1 of Lot 4 of Block 8 of Dakota Improvement Company's Second Addition to the City of Sioux Falls, Minnehaha County, South Dakota. Said Lot H1 contains 322.5 sq. ft., more or less. Plat Book 52, Page 103.

Lot H1 of Lot 3 of Block 8 of Dakota Improvement Company's Second Addition to the City of Sioux Falls, Minnehaha County, South Dakota. Said Lot H1 contains 322.5 sq. ft., more or less. Plat Book 52, Page 104.

Lot H1 of Lot 36 and South 18 feet of Lot 37 of Block 2 of Lawler's Addition to the City of Sioux Falls, South Dakota. Said Lot H1 contains 322.5 sq. ft., more or less. Plat Book 52, Page 158.

Lot H1 of Lot 2 of Block 8 of Dakota Improvement Company's Second Addition to the City of Sioux Falls, Minnehaha County, South Dakota. Said Lot H1 contains 322.5 sq. ft., more or less. Plat Book 52, Page 160.

Lot H1 of Lot 38 and North 7 feet of Lot 37 of Block 2 of Lawler's Addition to the City of Sioux Falls, Minnehaha County, South Dakota. Said Lot H1 contains 303.75 sq. ft., more or less. Plat Book 52, Page 174.

The East 70 feet of Lot 1, Block 8 in the Dakota Improvement Company's Second Addition to the City of Sioux Falls, Minnehaha County, South Dakota. Said Lot H1 contains 322.5 sq. ft., more or less. Plat Book 52, Page 20.

Lot H1 of Lots 13 through 18 of Block 3 of Lawler's Addition to the City of Sioux Falls, Minnehaha County, South Dakota, except the West 7 feet thereof. Said Lot H1 contains 323.25 sq. ft., more or less. Plat Book 52, Page 157.

Lot H1 of Lots 3 thru 8 of Block 1 of Dakota Improvement Company's Second Addition to the City of Sioux Falls, Minnehaha County, South Dakota. Said Lot H1 contains 1327.30 sq. ft., more or less. Plat Book 52, Page 159.

Lot H1 of Lots 19 thru 24 of Block 3 of Lawler's Addition to the City of Sioux Falls, Minnehaha County, South Dakota. Said Lot H1 contains 1695.86 sq. ft., more or less. Plat Book 52, Page 173.

Lot H1 in Block 4 of Lawler's Addition to the City of Sioux Falls, Minnehaha County, South Dakota. Said Lot H1 contains 4050 sq. ft., more or less. Plat Book 52, Page 86.

Lot H1 in Lots 11, 12 and 13 of Block 1 of Gamberg's Addition to the City of Sioux Falls, Minnehaha County, South Dakota. Said Lot H1 contains 198 sq. ft., more or less. Plat Book 52, Page 85.

Lot H1 of Lots 13 through 24 of Block 5 of Lawler's Addition to the City of Sioux Falls, Minnehaha County, South Dakota. Said Lot H1 contains 4050 sq. ft., more or less. Plat Book 52, Page 188.

Lot H1 in Lot 10 of Block 1 of Gamberg's Addition to the City of Sioux Falls, Minnehaha County, Sioux Falls. Said Lot H1 contains 22.11 sq. ft., more or less. Plat Book 52, Page 97.

Lot 22 of Block 2 of Gamberg's Addition to the City of Sioux Falls in Minnehaha County, South Dakota. Said Lot E contains 66 sq. ft., more or less. Plat Book 52, Page 19.

Lot H1 in Lots 20 and 21 except the West 8 feet thereof of Block 2 of Gamberg's Addition to the City of Sioux Falls, Minnehaha County, South Dakota. Said Lot H1 contains 132 sq. ft., more or less. Plat Book 52, Page 152.

Lot H1 in Lot 19 except the West 8 feet thereof of Block 2 Gamberg's Addition to the City of Sioux Falls, Minnehaha County, South Dakota. Said Lot H1 contains 66 sq. ft., more or less. Plat Book 52, Page 53.

Lot H1 in Lot 18 except the West 8 feet thereof of Block 2 of Gamberg's Addition to the City of Sioux Falls, Minnehaha County, South Dakota. Said Lot H1 contains 66 sq. ft., more or less. Plat Book 52, Page 96.

Lot H1 in Lot 17 except the West 8 feet thereof of Block 2 of Gamberg's Addition to the City of Sioux Falls, Minnehaha County, South Dakota. Said Lot H1 contains 76.78 sq. ft., more or less. Plat Book 52, Page 51.

Lot H1 in Lots 13 thru 22 of Block 6 of Lawler's Addition to the City of Sioux Falls, South Dakota. Said Lot H1 contains 2980 sq. ft., more or less. Plat Book 52, Page 105.

Lot H1 in Lot 16 except the West 8 feet thereof of Block 2 of Gamberg's Addition to the City of Sioux Falls, Minnehaha County, South Dakota. Said Lot H1 contains 97.02 sq. ft., more or less. Plat Book 52, Page 82.

Lot H1 in Lot 15 except the West 8 feet thereof of Block 2 of Gamberg's Addition to the City of Sioux Falls, Minnehaha County, South Dakota. Said Lot H1 contains 116.16 sq. ft., more or less. Plat Book 52, Page 161.

Lot H1 in the South 10 feet of Lot 13 and all of Lot 14 except the West 8 feet thereof of Block 2 of Gamberg's Addition to the City of Sioux Falls, Minnehaha County, South Dakota. Said Lot H1 contains 169.02 sq. ft., more or less. Plat Book 52, Page 154.

Lot H1 in Lot 12 and North 34 feet of Lot 13 of Block 2 of Gamberg's Addition to the City of Sioux Falls, Minnehaha County, South Dakota. Said Lot H1 contains 270.72 sq. ft., more or less. Plat Book 52, Page 83.

Lot H1 in Lot 11 of Block 1 of Gamberg's Second Addition to the City of Sioux Falls, South Dakota. Said Lot H1 contains 190.96 sq. ft., more or less. Plat Book 52, Page 107.

Lot H1 of Lots 23 and 24 of Block 6 of Lawler's Addition to the City of Sioux Falls, South Dakota, and the S1/2 of Tract 3 of County Auditor's Subdivision of Lawler's Addition to the City of Sioux Falls, Minnehaha County, South Dakota. Said Lot H1 contains 687.28 sq. ft., more or less. Plat Book 52, Page 153.

Lot H1 of Lot 10 of Block 1 of Gamberg's Second Addition to the City of Sioux Falls, Minnehaha County, South Dakota. Said Lot H1 contains 210.32 sq. ft., more or less. Plat Book 52, Page 52.

Lot H1 in Lot 9 of Block 1 of Gamberg's Second Addition to the City of Sioux Falls, Minnehaha County, South Dakota. Said Lot H1 contains 229.68 sq. ft., more or less. Plat Book 52, Page 84.

Lot H1 in Lots 6, 7 and 8 of Block 1 of Gamberg's Second Addition to the City of Sioux Falls, Minnehaha County, South Dakota. Lot H1 contains 805.2 sq. ft., more or less. Plat Book 52, Page 166.

Lot H1 of Tract 5 of County Auditor's Subdivision of Lawler's Addition to the City of Sioux Falls, Minnehaha County, South Dakota. Said Lot H1 contains 418.5 sq. ft., more or less. Plat Book 52, Page 12.

Lot H1 of Illinois Central Gulf Railroad Company Right of Way N1/2 NW1/4 of Section 15, Township 101 North, Range 49 West of the 5th P.M., Minnehaha County, South Dakota. Said Lot H1 contains 304.57 sq. ft., more or less. Plat Book 52, Page 3.

Lot H2 in the NE1/4 of Section 16, Township 101 North, Range 49 West of the 5th P.M. being a portion of the abandoned Illinois Central Railroad Right of Way, Minnehaha County, South Dakota. Said Lot H2 contains 126 sq. ft., more or less, of which all 126 square feet is section line right of way. Plat Book 53, Page 252.

Lot H2 in the Illinois Central Gulf Railroad Co. Railroad Right of Way in the S1/2 SE1/4 of Section 9, Township 101 North, Range 49 West of the 5th P.M., Minnehaha County, South Dakota. Said Lot H2 contains 884.89 sq. ft., more or less. Plat Book 53, Page 251.

Lot H1 of Illinois Central Gulf Railroad Company Right of Way SW1/4 SW1/4 of Section 10, Township 101 North, Range 49, West of the 5th P.M., Minnehaha County, South Dakota. Said Lot H1 contains 291.63 sq. ft., more or less. Plat Book 52, Page 4.

Lot H1 of Lot A of a part of Tract 2 of the SW1/4 of Section 10, Township 101 North, Range 49 West of the 5th P.M., Minnehaha County, South Dakota. Said Lot H1 contains 1069.31 sq. ft., more or less. Plat Book 52, Page 151.

Lot H1 in Chicago and Northwestern Transportation Co. Right of Way, S1/2 SE1/4 of Section 9, Township 101 North, Range 49 West of the 5th P.M., Minnehaha County, South Dakota. Said Lot H1 contains 4043.2 sq. ft., more or less. Plat Book 52, Page 29.

Lot H1 in Burlington Northern Inc. Railroad Right of Way in the SW1/4 SW1/4 of Section 10, Township 101 North, Range 49 West of the 5th P.M., Minnehaha County, South Dakota. Said Lot H1 contains 3087.5 sq. ft., more or less. Plat Book 52, Page 28.

Lot H1 in Tract 7 of County Auditor's Subdivision in the SE1/4 of Section 9, Township 101 North, Range 49 West of the 5th P.M., Minnehaha County, South Dakota. Said Lot H1 contains 1015.91 sq. ft., more or less. Plat Book 52, Page 143.

Lots H2 and H4 in County Auditor's Lot B of Tract 1 in the SW1/2 of Section 10, Township 101 North, Range 49 West of the 5th P.M. except the South 44 feet of the North 188 feet of the West 150 feet thereof and except Lot H-1 contained therein, Minnehaha County, South Dakota. Said Lot H2 contains 387.3 sq. ft., more or less. Said Lot H4 contains 285.45 sq. ft., more or less. Plat Book 52, Page 76.

The South 44 feet of the North 188 feet of the West 150 feet of Lot B of Tract 1 of County Auditor's Subdivision in the SW1/4 of Section 10, Township 101 North, Range 49 West of the 5th P.M., Minnehaha County, South Dakota. Total acquisition 6600 sq. ft. Dedication plat 330 sq. ft., more or less. Plat Book 54, Page 16.

Lot H1 in Tract 6 of County Auditor's Subdivision of the SE1/4 of Section 9, Township 101 North, Range 49 West of the 5th P.M., Minnehaha County, South Dakota. Said Lot H1 contains 150 sq. ft., more or less. Plat Book 52, Page 142.

Lot H2 in Lot B except the North 33 feet thereof and except Tracts "A" and "B" thereof of County Auditor's Subdivision of Tract 4 of County Auditor's Subdivision of the SE1/4 of Section 9, Township 101 North, Range 49 West of the 5th P.M. and except all Railroad Right of Way and Roadways therein, Minnehaha County, South Dakota. Said Lot H2 contains 206.7 sq. ft., more or less. Plat Book 52, Page 123.

Lot H1 of Lot B in County Auditor's Subdivision in Tract 4 of County Auditor's Subdivision in the SE1/4 of Section 9, Township 101 North, Range 49 West of the 5th P.M., Minnehaha County, South Dakota. Said Lot H1 contains 0.03 acre, more or less. Plat Book 48, Page 69.

Lot H1 of County Auditor's Lot B in Tract 1 of the SW1/4 of Section 10, Township 101 North, Range 49 West of the 5th P.M., Minnehaha County, South Dakota. Said Lot H1 contains 0.02 acre, more or less. Plat Book 48, Page 16.

Lot H1 of County Auditor's Lot A in Tract 1 of the SW1/4 of Section 10, Township 101 North, Range 49 West of the 5th P.M., Minnehaha County, South Dakota. Said Lot H1 contains 0.03 acre, more or less. Plat Book 48, Page 17.

Lot H1 of Lot A in County Auditor's Subdivision in Tract 4 of County Auditor's Subdivision in the SE1/4 of Section 9, Township 101 North, Range 49 West of the 5th P.M., Minnehaha County, South Dakota. Said Lot H1 contains 0.04 acre, more or less. Plat Book 48, Page 68.

Lot H2 of Lots 1 through 9 in Block 1 of Stockvards Addition to the City of Sioux Falls, Minnehaha County, South Dakota. Lot H2 contains 0.08 acre, more or less. Plat Book 48,

Lot 20 of Mostrums First Addition to the City of Sioux Falls, Minnehaha County, South Dakota. Lot H1 contains 0.01 acre, more or less. Plat Book 48, Page 40.

Lot H2 in the SE1/4 NE1/4 SE1/4 of Section 9, Township 101 North, Range 49 West of the 5th P.M., Minnehaha County, South Dakota. Lot H2 contains 0.20 acre, more or less. Plat Book 48, Page 99.

Lot H1 in the SE1/4 NE1/4 of Section 9, Township 101 North, Range 49 West of the 5th P.M., Minnehaha County, South Dakota. Lot H1 contains 0.24 acre, more or less. Plat Book 50, Page 61.

Lot H1 of Lot 7 of Block 13 of Forest Hill Addition to the City of Sioux Falls, Minnehaha County, South Dakota. Lot H1 contains 0.01 acre, more or less. Plat Book 47, Page 143.

Lot H1 of Tract 10 of County Auditor's Subdivision in the SE1/4 of Section 9, Township 101 North, Range 49 West of the 5th P.M., Minnehaha County, South Dakota. Said Lot H1 contains 0.13 acre, more or less. Plat Book 50, Page 62.

Lot H1 in the E1/2 NE1/4 SE1/4 of Section 9, Township 101 North, Range 49 West of the 5th P.M., Minnehaha County, South Dakota. Said Lot H1 contains 0.50 acre, more or less.

Lot H1 in Tract 5 in the SE1/4 NE1/4 of Section 9, Township 101 North, Range 49 West of the 5th P.M., Minnehaha County, South Dakota. Said Lot H1 contains 0.15 acre, more or less.

Lot H1 of Tract 1 of Oberg's Addition to the City of Sioux Falls, Minnehaha County, South Dakota. Said Lot H1 contains 0.11 acre, more or less. Plat Book 50, Page 54.

West 17 feet of the East 50 feet of Lot E1 in Tract 5 of County Auditor's Subdivision in the SE1/4 NE1/4 of Section 9, Township 101 North, Range 49 West of the 5th P.M., Minnehaha County, South Dakota. Said Lot contains 0.04 acre, more or less.

Lot H1 in Block 8 Riverside Addition to Sioux Falls, Minnehaha County, South Dakota. Said Lot H1 contains 0.08 acre, more or less. Plat Book 17, Page 93.

Lot H1 in Tract 2 in the SW1/4 NW1/4 of Section 10, Township 101 North, of Range 49 West of the 5th P.M., Minnehaha County, South Dakota. Said Lot H1 contains 0.61 acre, more or less. Plat Book 17, Page 92.

Lot H2, in the NW1/4 of Section 10, Township 101 North, Range 49 West of the 5th P.M., Minnehaha County, South Dakota. Said Lot H2 contains 1.91 acres, more or less. Plat Book 17, Page 86.

Lot H1 of Tract 17, in Norton Tracts Subdivision in the S1/2 of Section 3, Township 101 North, Range 49 West of the 5th P.M., Minnehaha County, South Dakota. Said Lot H1 contains 0.35 acre, more or less. Plat Book 17, Page 80.

Lot H1 of Tracts 13, 14, 15, and 16, in Norton Tracts Subdivision in the S1/2 of Section 3, Township 101 North, Range 49 West of the 5th P.M., Minnehaha County, South Dakota. Said Lot H1 contains 1.57 acres, more or less. Plat Book 17, Page 79.

Lot H1 of Tract 12, of Norton Tracts Subdivision in the S1/2 of Section 3, Township 101 North, Range 49 West of the 5th P.M., Minnehaha County, South Dakota. Said Lot H1 contains 0.38 acre, more or less. Plat Book 17, Page 73.

Lot H1 of Tract 11, in Norton Tracts Subdivision in the S1/2 of Section 3, Township 101 North, Range 49 West of the 5th P.M., Minnehaha County, South Dakota. Said Lot H1 contains 0.36 acre, more or less. Plat Book 17, Page 71.

Lot H1 of Tracts 9 and 10 of Norton Tracts Subdivision, in the S1/2 of Section 3, Township 101 North, Range 49 West of the 5th P.M., Minnehaha County, South Dakota. Said Lot H1 contains 0.73 acre, more or less. Plat Book 17, Page 95.

Lot H1 of Tract 8 of Norton Tracts Subdivision, in the S1/2 of Section 3, Township 101 North, Range 49 West of the 5th P.M., Minnehaha County, South Dakota. Said Lot H1 contains 0.30 acre, more or less. Plat Book 17, Page 96.

Lot H1 of Tracts 6 and 7, of Norton Tracts Subdivision, in the S1/2 of Section 3, Township 101 North, Range 49 West of the 5th P.M., Minnehaha County, South Dakota. Said Lot H1 contains 0.61 acre, more or less. Plat Book 17, Page 94.

Lot H1 of Tracts 4 and 5, of Norton Tracts Subdivision in the S1/2 of Section 3, Township 101 North, Range 49 West of the 5th P.M., Minnehaha County, South Dakota. Said Lot H1 contains 0.63 acre, more or less. Plat Book 17, Page 81.

Lot H2, of Tracts 2 and 3, of Norton Tracts Subdivision in the S1/2 of Section 3, Township 101 North, Range 49 West of the 5th P.M., Minnehaha County, South Dakota. Said Lot H2 contains 0.23 acre, more or less. Plat Book 17, Page 83.

Lot H1, of Tracts 2 and 3, of Norton Tracts Subdivision in the S1/2 of Section 3, Township 101 North, Range 49, West of the 5th P.M., Minnehaha County, South Dakota. Said Lot H contains 0.69 acre, more or less. Plat Book 17, Page 85.

Lot H2, of Tract 1, of Norton Tracts Subdivision in the S1/2 of Section 3, Township 101 North, Range 49 West of the 5th P.M., Minnehaha County, South Dakota. Said Lot H2 contains 0.12 acre, more or less. Plat Book 17, Page 82.

Lot H1, of Tract 1, of Norton Tracts Subdivision, in the S1/2 of Section 3, Township 101 North, Range 49 West of the 5th P.M., Minnehaha County, South Dakota. Said Lot H1 contains 0.32 acre, more or less. Plat Book 17, Page 84.

Lot H2 in the W1/2 W1/2 NW1/4 of Section 3, Township 101 North, Range 49 West of the 5th P.M., Minnehaha County, South Dakota. Said Lot H2 contains 1.86 acres, more or less. Plat Book 46, Page 98.

Lot H1 less Lot H4 in the W1/2 W1/2 NW1/4 of Section 3, Township 101 North, Range 49 West of the 5th P.M., Minnehaha County, South Dakota. Said Lot H1 contains 1.37 acres, more or less. Plat Book 20, Page 34.

Lot H3 in the W1/2 W1/2 NW1/4 of Section 3, Township 101 North, Range 49 West of the 5th P.M., Minnehaha County, South Dakota. Said Lot H3 contains 0.54 acre, more or less. Plat Book 27, Page 86.

This resolution will transfer a portion of N. Cliff Avenue from Benson Rd. to E. 10th St. in Sioux Falls towards completing Agreement #710142 between the City of Sioux Falls and Department of Transportation. The highway right of way described above would be transferred to the city of Sioux Falls and the city of Sioux Falls would accept ownership, jurisdiction, operational and maintenance responsibilities of the above described right-of-way. Sioux Falls Area DOT recommends the transfer. (See attachments)

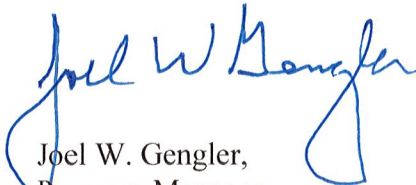
3. Request Transportation Commission approval to abandon by resolution the following property acquired for highway right-of-way:

Lot A in Lot H-2 in the SW1/4 SW1/4 of Section 13, Township 1 South, Range 6 East of the B.H.M., Pennington County, South Dakota, containing 0.7 acre.

Retain Control of Access to and from US16.

The above property is no longer needed for highway purposes and abandonment is recommended by DOT Rapid City Area. (See attachments)

Sincerely,



Joel W. Gengler,
Program Manager

PLAT OF LOT A AND LOT B

in a portion of the 66' previously acquired highway right of way located in the NE1/4 NW1/4, Lot H2 in the NE1/4 NW1/4 and Lot H5 in the NE1/4 NW1/4; all of Section 20 - Township 3 South - Range 29 East of the B.H.M.

JONES COUNTY, SOUTH DAKOTA

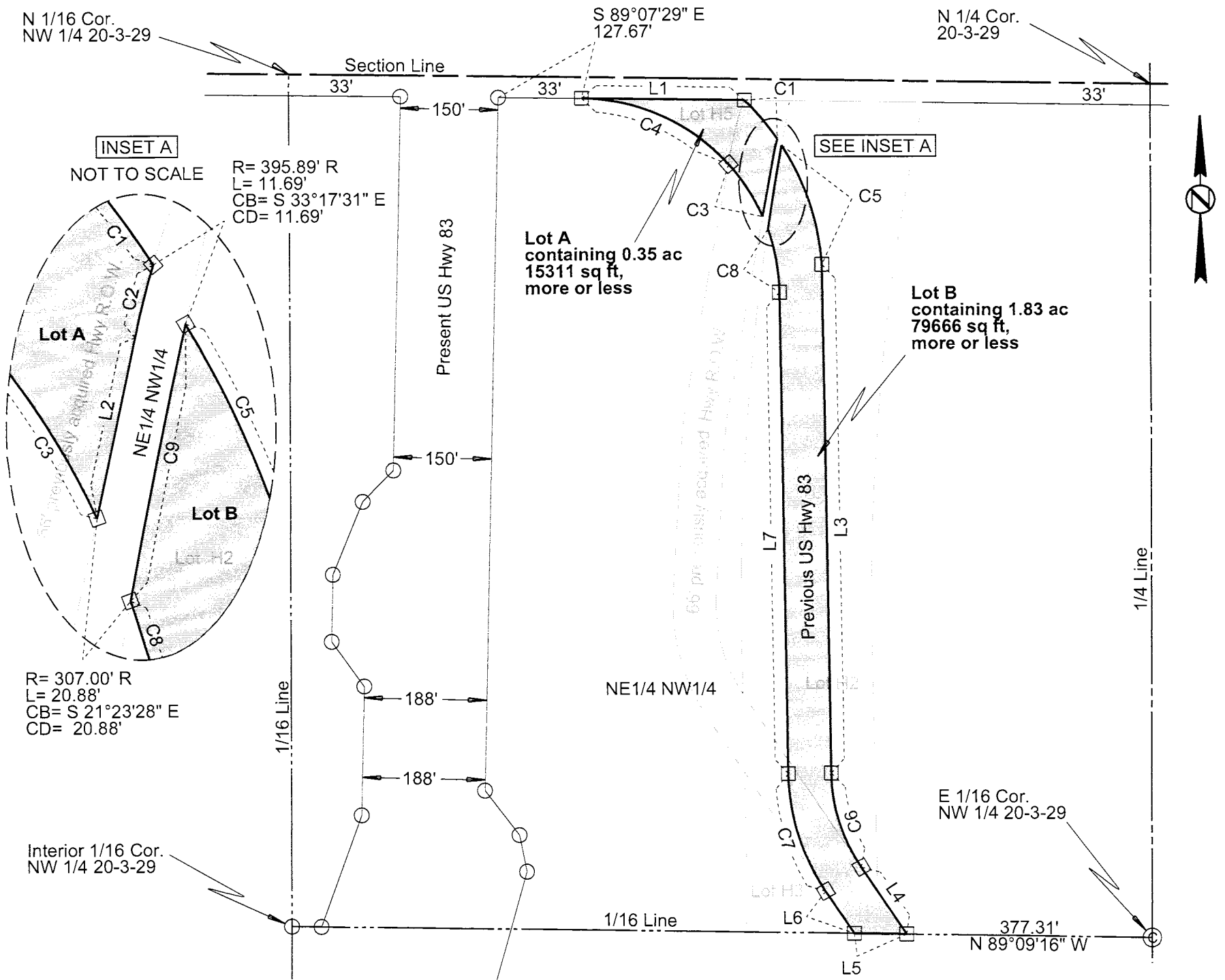
Showing parcels of land for public purposes, transferred to Jones County

Scale: 1 inch = 200 feet

LEGEND

- = set corner
- = set property corner

	Bearing	Length	Chord	Radius		Bearing	Length	Chord	Radius
L1	S 89° 07' 29" E	250.08			C6	S 17° 19' 31" E	154.16	152.02	266.56L
C1	S 39° 49' 56" E	78.69	78.56	395.89R	L4	S 33° 53' 36" E	124.28		
C2	S 12° 23' 33" W	29.08	29.08	407.74L	L5	N 89° 09' 16" W	80.32		
L2	S 10° 20' 57" W	94.32			L6	N 33° 53' 36" W	78.51		
C3	N 32° 26' 38" W	97.56	97.15	307.00L	C7	N 17° 19' 31" W	192.33	189.66	332.56R
C4	N 65° 20' 10" W	254.92	247.66	307.00L	L7	N 00° 45' 25" W	744.65		
C5	S 18° 07' 03" E	198.01	195.95	395.89R	C8	N 10° 05' 59" W	100.12	99.68	307.00L
L3	S 00° 45' 25" E	786.53			C9	N 09° 32' 16" E	132.70	132.69	3919.72R



Note 1: The coordinates, bearings, distances and areas shown on this plat are based on the South Dakota State Plane Coordinate System Grid North - South Zone NAD 83/11 epoch 2010.00 Geoid 12A SF = 0.9998183503

Note 2: All monumentation will be set upon project completion.

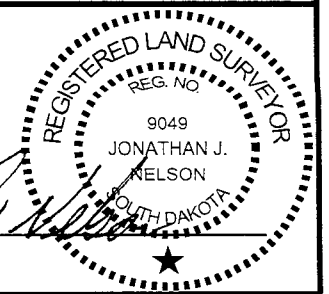
Drawn By Kimberly L. Herrman Date 08/28/2020
 Checked By Jon Nelson Date 08/28/2020

SURVEYOR'S CERTIFICATE

I, JONATHAN J. NELSON, Registered Land Surveyor, in and for the State of South Dakota, do hereby certify that as ordered by the South Dakota Department of Transportation the parcel of land as shown on this plat has been surveyed at my direction and under my control, and such parcel of land shall be hereafter known by the lot number designated herein. The location and dimensions of the parcel are shown on this plat.

In witness whereof, I have set my hand and seal this 31st day of August, A.D., 2020.

Jonathan J. Nelson
 Registered Land Surveyor
 Registration No. 9049





OFFICE OF REGISTER OF DEEDS

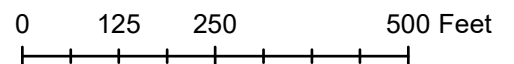
State of South Dakota
 County of _____ ss
 Filed for record the _____ day of _____, A.D., 20____, at _____ M., and recorded in Books of Plats _____ on Page _____ therein.

Proposed Transfer - Lots A and B - Jones County

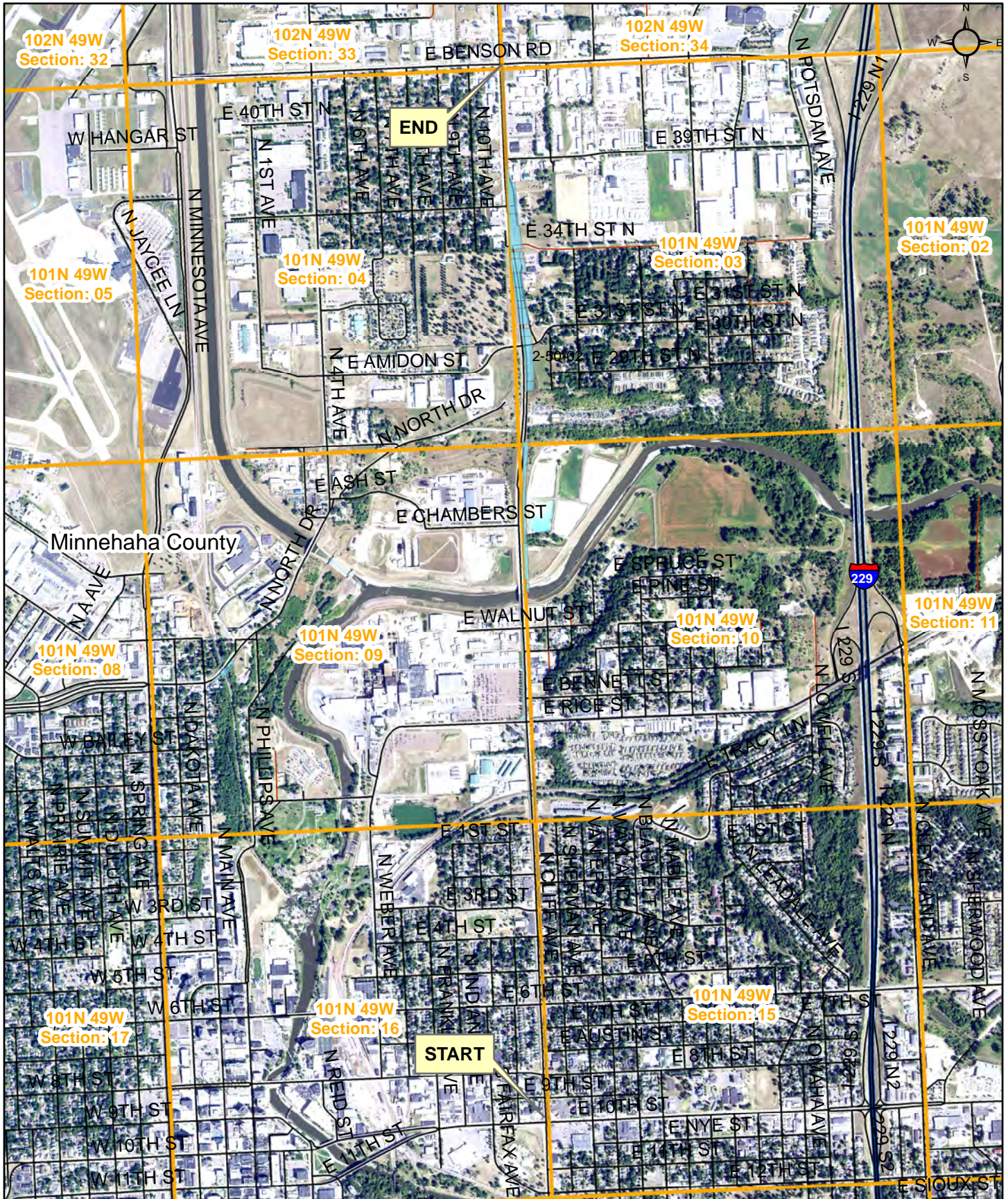


Legend

-  Proposed Transfer
-  Section Line

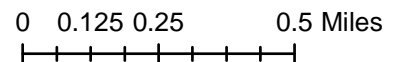


AGREEMENT #710142 - SEGMENT 4



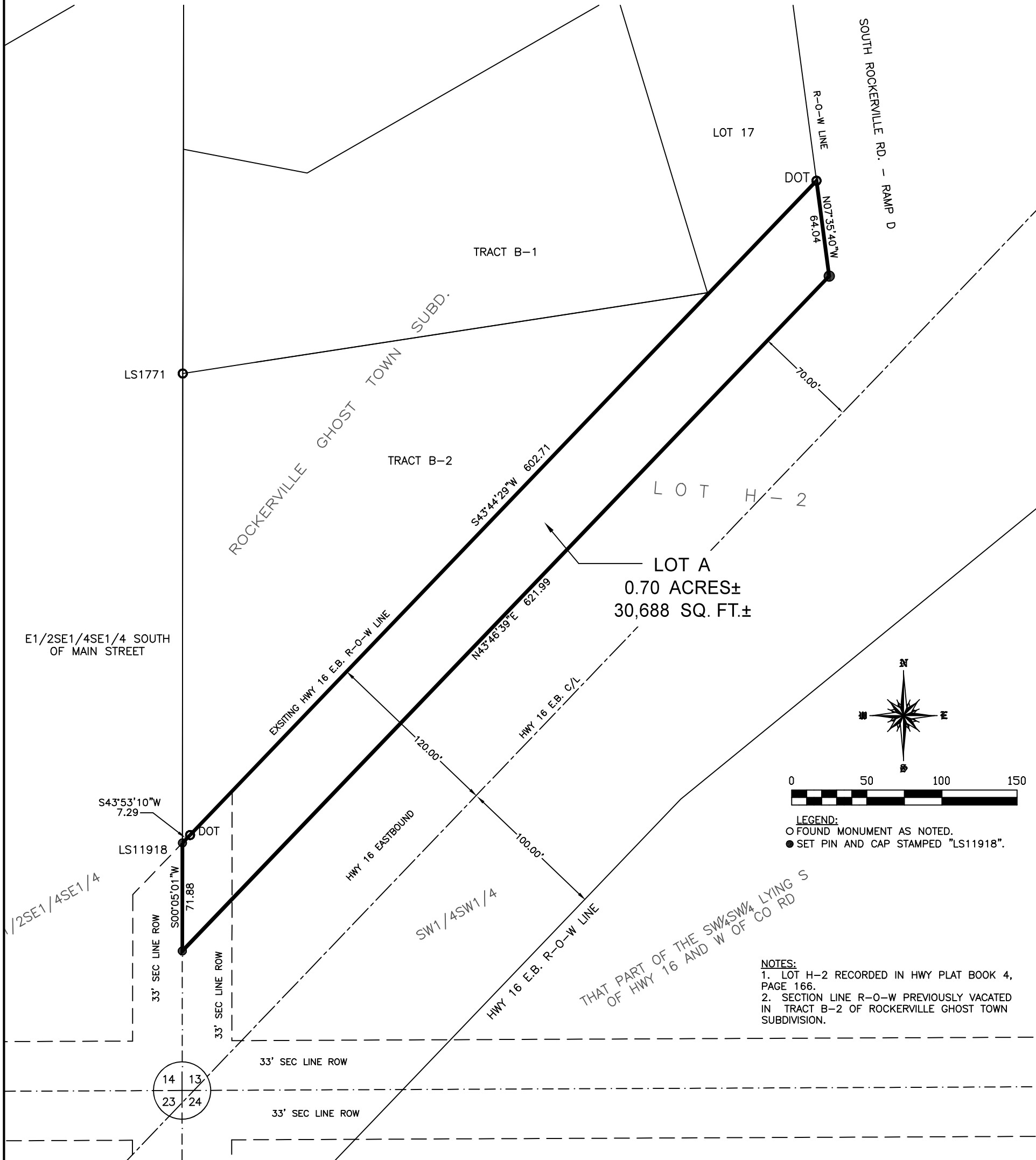
Legend

- Proposed Transfer
- Section Line



PLAT OF LOT A,
BEING A PART OF LOT H-2,
LOCATED IN THE SW¹/₄SW¹/₄ OF SECTION 13 T1S, R6E, BHM,
PENNINGTON COUNTY, SOUTH DAKOTA
SHOWING A PARCEL OF LAND FOR HIGHWAY PURPOSES TO BE ABANDONED

Item #3



LEGEND:
 ○ FOUND MONUMENT AS NOTED.
 ● SET PIN AND CAP STAMPED "LS11918".


NOTES:
 1. LOT H-2 RECORDED IN HWY PLAT BOOK 4, PAGE 166.
 2. SECTION LINE R-O-W PREVIOUSLY VACATED IN TRACT B-2 OF ROCKERVILLE GHOST TOWN SUBDIVISION.

CERTIFICATE OF SURVEYOR
 STATE OF SOUTH DAKOTA COUNTY OF LAWRENCE
 I, BRADLEY LIMBO, REGISTERED LAND SURVEYOR NO. 11918 IN THE STATE OF SOUTH DAKOTA, DO HEREBY CERTIFY THAT AT THE REQUEST OF THE OWNER(S) LISTED HEREON I HAVE SURVEYED THAT TRACT OF LAND SHOWN, AND TO THE BEST OF MY KNOWLEDGE AND BELIEF, THE WITHIN PLAT IS A REPRESENTATION OF SAID SURVEY. EASEMENTS OR RESTRICTIONS OF MISCELLANEOUS RECORD OR PRIVATE AGREEMENTS THAT ARE NOT KNOWN TO ME ARE NOT SHOWN HEREON. IN WITNESS WHEREOF, I HAVE HEREUNTO SET MY HAND AND SEAL.

 BRADLEY LIMBO, REGISTERED LAND SURVEYOR DATE: _____

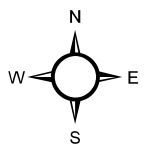
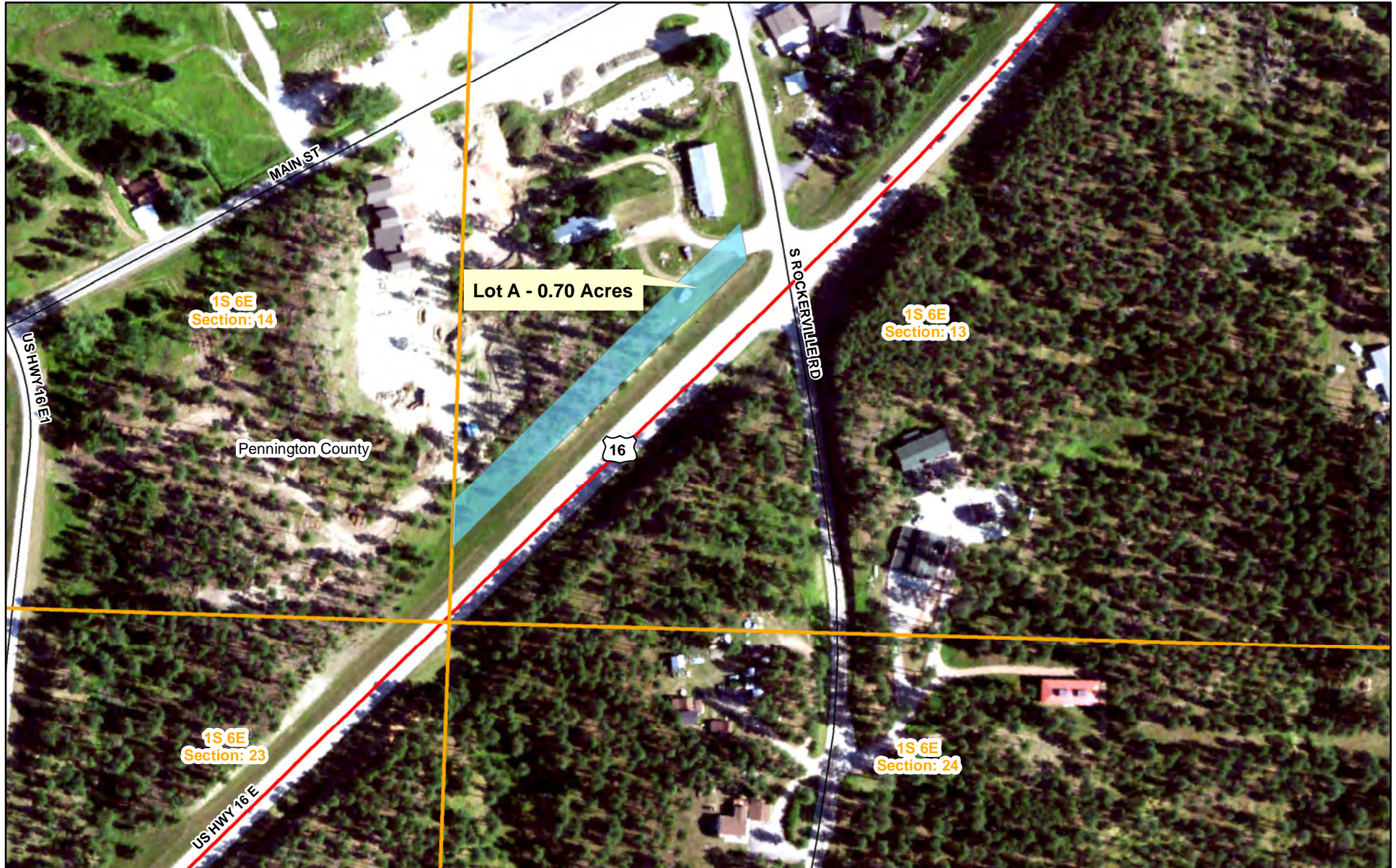
OFFICE OF THE REGISTER OF DEEDS
 STATE OF SOUTH DAKOTA COUNTY OF PENNINGTON
 FILED THIS ____ DAY OF _____, 20____, AT ____ O'CLOCK, ____ M., IN DOCUMENT NUMBER _____ FEE: \$ _____

 PENNINGTON COUNTY REGISTER OF DEEDS



PREPARED BY:

ALL ASPECTS INC.
 LAND SURVEYING
 Project: AN-21-128
 Date: MAY 28, 2021
 Rev:
 Surveyed by: BJL
 Prepared By: FD
 All Aspects INC.
 444 Saint Joe St.
 Spearfish SD 57783
 605-490-2944
 LimboPLSAI@GMAIL.COM

Proposed Abandonment US 16 EB - Rockerville

Item #3



Legend

-  Proposed Abandonment
-  PLSS Sections

