



Briefing to the House and Senate Transportation Committee

January 2025

1

OUR TEAM



Joel Jundt
Secretary of Transportation



Kellie Beck
Director of Finance & Management



Craig Smith
Director of Operations

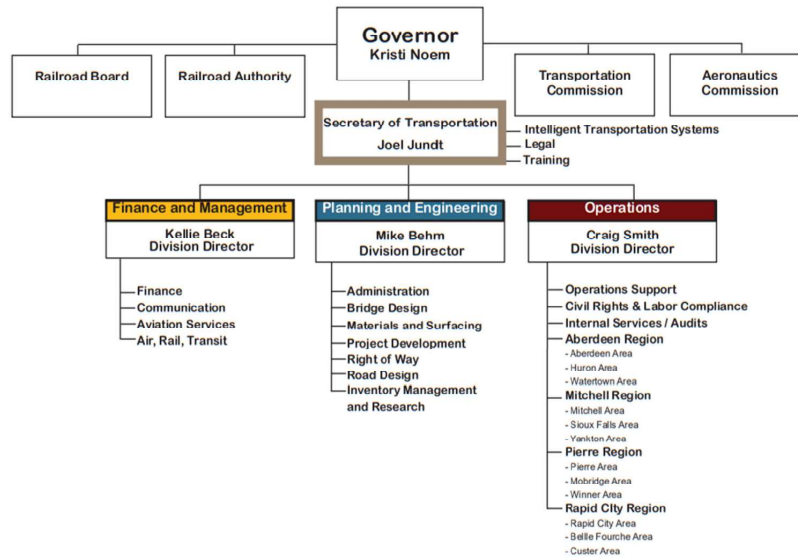


Mike Behm
Director of Planning & Engineering

2

South Dakota Department of Transportation

Organization Chart




3

Discussion Outline

- SDDOT Strategic Plan
- Transportation Performance Measures
- Revenue and Funding
- Who We Are
- Enhancements

4



SD
DEPARTMENT OF
TRANSPORTATION

STRATEGIC PLAN 2025

MISSION - We provide a safe and efficient public transportation system
VISION - Better lives through better transportation

STRATEGIC OBJECTIVES
 Where we must focus our strengths and resources to overcome our challenges

CORE VALUES - Principles and expected behaviors that guide our actions and conduct:

All employees contribute to providing a high-quality transportation system by continuously striving to innovate and improve the quality of services.

1. **High Ethical Standards** - Honesty, integrity, respect, and professionalism with our internal customers, partners, stakeholders, and the public
2. **Stewardship** - Innovative, efficient, and accountable use of public resources
3. **Transparent Public Service** - Exemplary trustworthy public service with unprecedented access to information and decision-making processes
4. **Safety** - Safety in all we do
5. **Teamwork** - Inclusive, diverse, innovative, and supportive work culture
6. **Improvement** - Initiate and implement new ideas or methods to create value

SAFETY

EVERYONE HOME SAFE EVERY DAY

Focus Areas & Key Actions
Highway Safety - Reduce fatal and serious injury crashes

- Implement highway safety program
- Implement new winter operations closure strategies
- Refine design for variable speed limit systems
- Construction work zone research

Workforce Safety - Reduce workplace injuries, incidents, and crashes

- Update safety committees and safety manual
- Safety team presence and support to field and office activities
- Empower employees to stop work due to safety concerns

Key Metrics

- Serious injury and fatal crashes
- Work zone crashes
- Snowplow crashes
- Workforce injuries

WORKFORCE

GROW AND RETAIN A HIGH PERFORMING WORKFORCE

Focus Areas & Key Actions
Recruitment - Attract a diverse qualified workforce

- Promote SDDOT through schools (K-12/collegiate) and communities
- Deploy clear, concise, and engaging requisition and job postings for all positions
- Deploy recruitment strategies and awareness to all employees

Retention - Reduce turnover, enhance employee engagement, and build a stable, high-performing workforce

- Promote career advancement opportunities
- Ensure deployment of employee onboarding process checklist
- Workgroups for similar positions to define and communicate expectations for work-life balance
- Explore Employee Resource Groups (ERG)

Development and Training - Build a highly skilled and adaptable workforce

- Train to learn and understand SDDOT standard practices, policies, and procedures
- Communicate expectations on leadership development to all supervisors
- Establish safety standing training group and implement updated safety training
- Establish methods to measure effectiveness of training

Key Metrics

- Employees receive sufficient explanation and details regarding significant changes in the agency
- Employees are able to balance work and personal life
- Employees feel they are doing something worthwhile
- Retention of employees
- Average number of open position
- Kirkpatrick training effectiveness

SERVICE

PROVIDE EXCELLENT SERVICES

Focus Areas & Key Actions
Highway and Bridge Condition - Sustain a high quality transportation system

- Delivery of STIP
- Implement Maintenance Equipment Management System to manage highway assets

Winter Operations - Ensure safety and mobility during winter weather events

- Enhanced messaging during winter events
- Improved effectiveness and efficiency of operations

Customer and Public Engagement - Deliver transparent, timely, and accessible information with proactive two-way communication

- Deploy Public Involvement Plan (PIP) and engagement practices

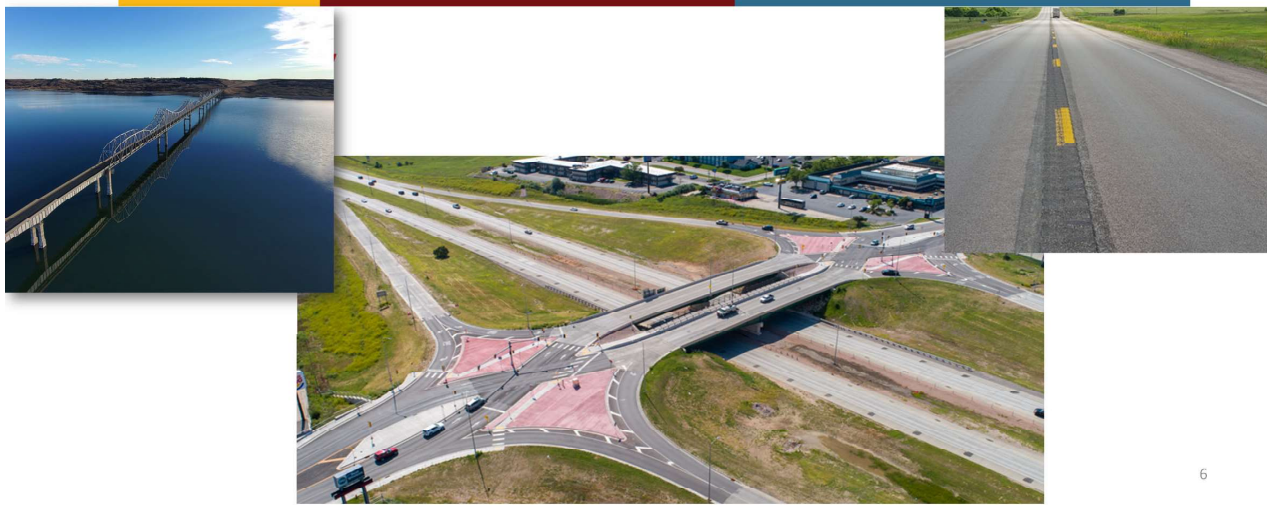
Technology and Improvement Adoption - Implement technology and improvements to improve services

- IT road map implementation
- Deploy improvement idea process to all employees

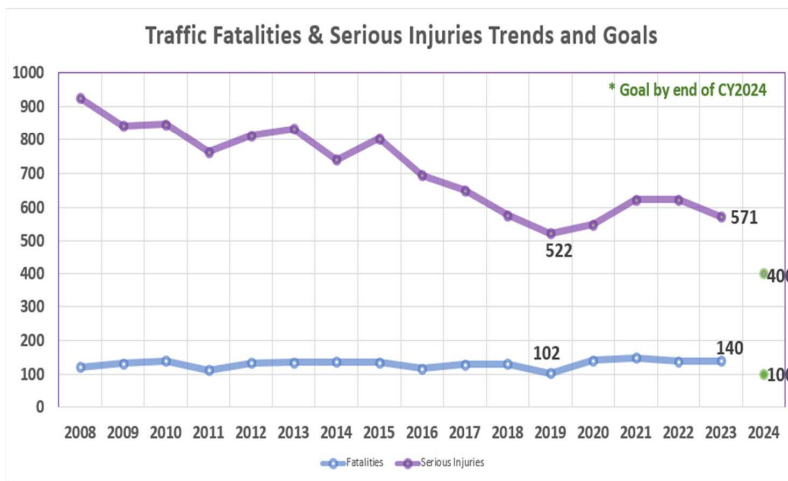
Key Metrics

- System reliability
- Customer satisfaction
- Pavement and bridge condition
- SDDOT usage and satisfaction
- Winter road recovery times

Transportation Performance Measures



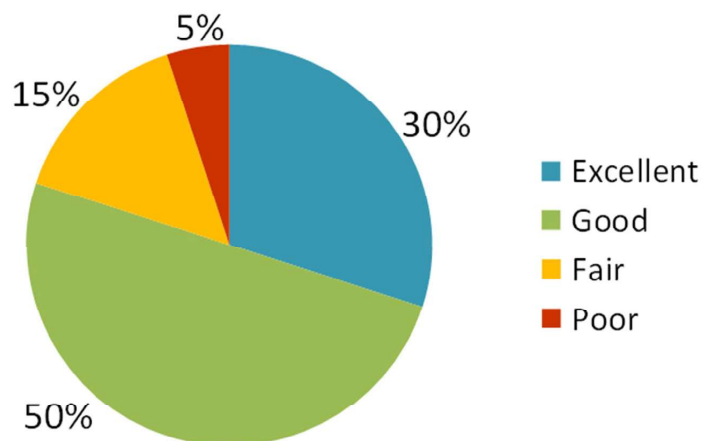
Highway Safety



2024 South Dakota
Strategic Highway Safety Plan
 August 2024

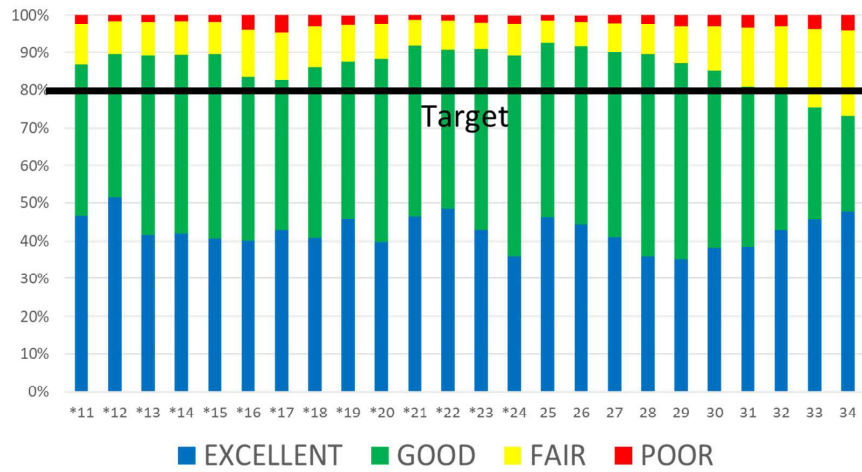


Highest Return-on-Investment Pavement Distribution Goal



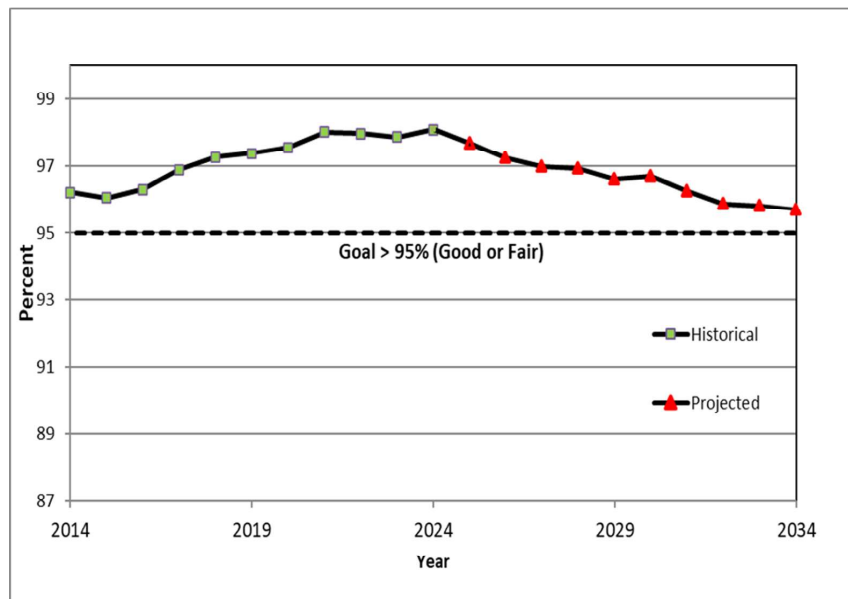
Pavements

Historical & Projected Future Pavement Condition Based on Current Investment



9

Historic & Predicted Bridge Condition

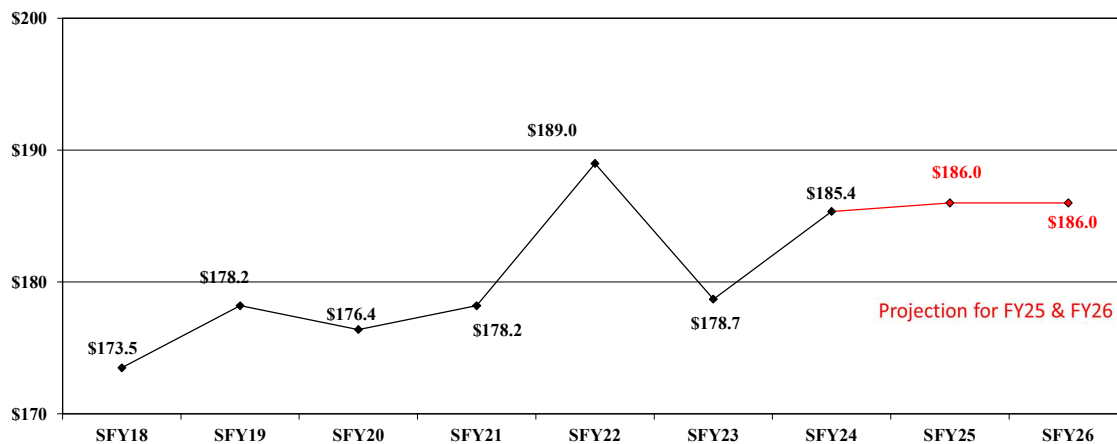


10

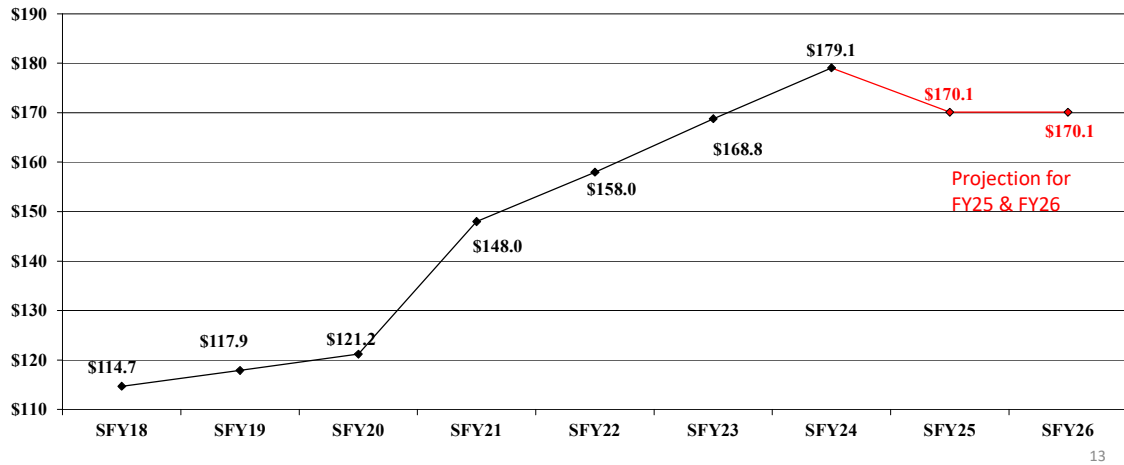
Revenue and Funding



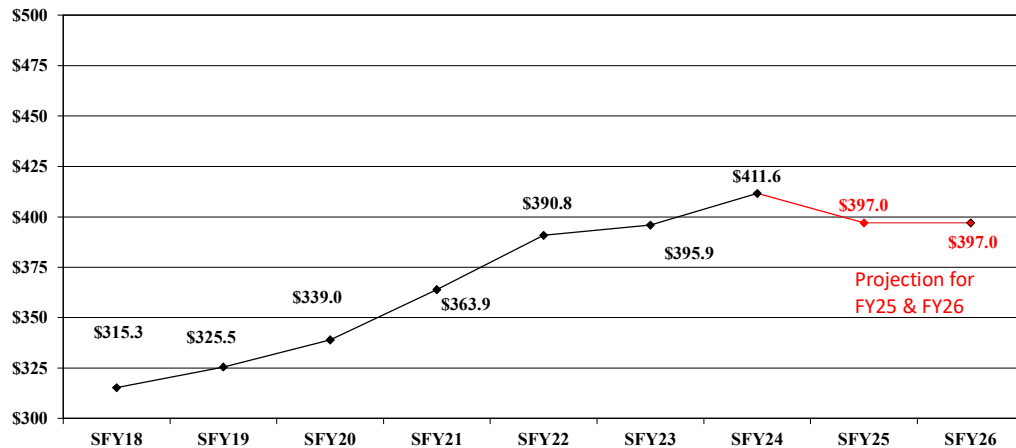
Motor Fuel Revenues SFY2018-SFY2024 Collections



Motor Vehicle Excise Tax SFY2018-SFY2024 Collections



Total State Highway Fund Revenues SFY2018-SFY2024 Collections



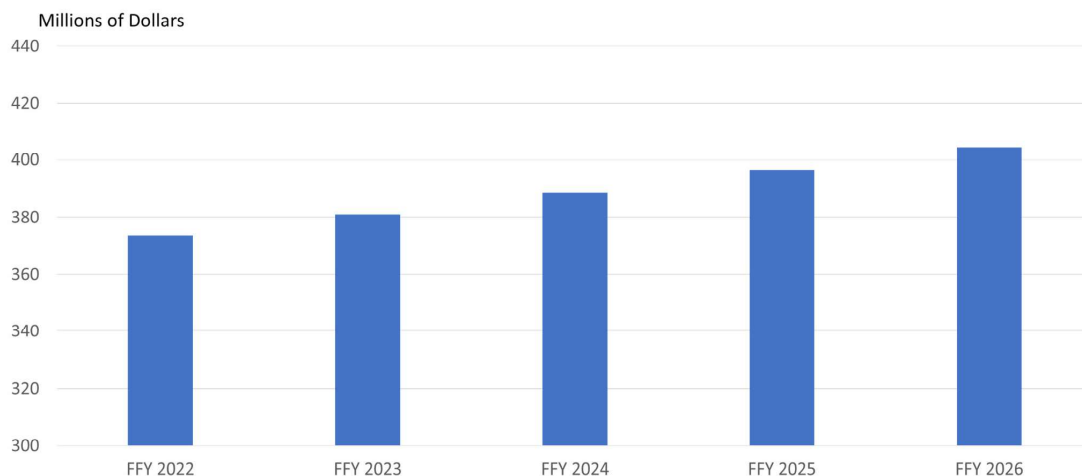
State and Local Involvement

Federal and State Funding Allocation to Local Governments		
	Millions	Federal and/or State
STP - Counties	\$17.6	Federal
STP - Cities	\$16.0	Federal
Match on STP Funds	\$2.8	State
Bridge Improvement Grants (BIG)	\$21.3	State
State Transportation Loan	\$1.5	State
State Infrastructure Bank Loan	\$16.5	Federal
Bridge Inspections	\$2.7	Federal
Safety Projects	\$12.1	Federal
Statewide Striping Projects	\$0.5	State
Railroad Crossing Improvement Projects	\$1.9	Federal
Transportation Alternative Program (TAP)	\$9.3	Federal
Planning and Research Funds	\$2.8	Federal
Transit Planning Funds	\$0.6	Federal
Community Access Grants	\$4.0	State
Local Federal Bridge Replacement Program	\$35.6	Federal
Total	\$145.2	

15

Infrastructure Investment Jobs Act - Highways and Bridges

FFY 2022 – 2026 Formula Appropriations



16

Infrastructure Investment Jobs Act – Air, Rail and Transit

Rail

Consolidated Rail Infrastructure and Safety Improvement (CRISI) Grants

- Special Transportation Circumstance (STC) Grants – Dedicated Rail funding for SD
- SD is estimated to receive \$27 million in 2025

Airports

- Expected to receive \$106 Million for 2025 grants

Transit

- Expected to receive roughly \$15M for Rural providers in FFY25



17

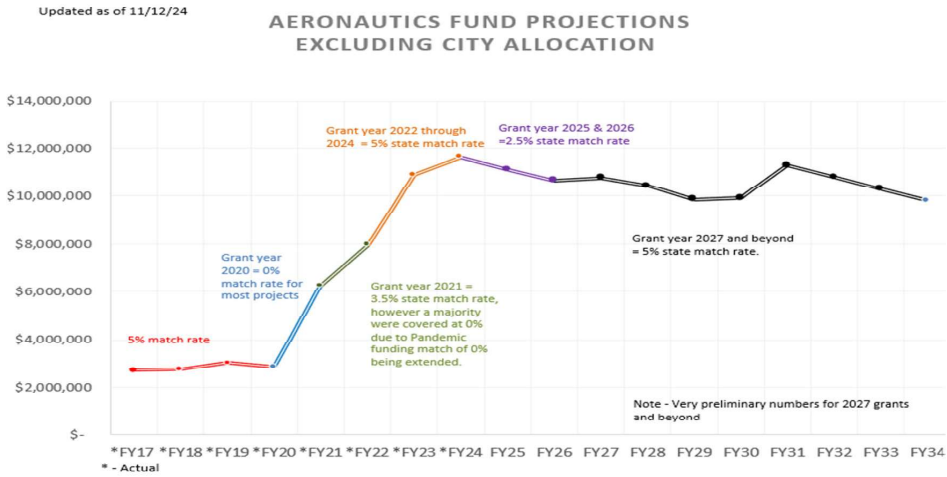
Summary of South Dakota Airport Terminal Program

SB144 during the 2024 Legislative Session allocated \$10 million in funding for airport terminal projects.

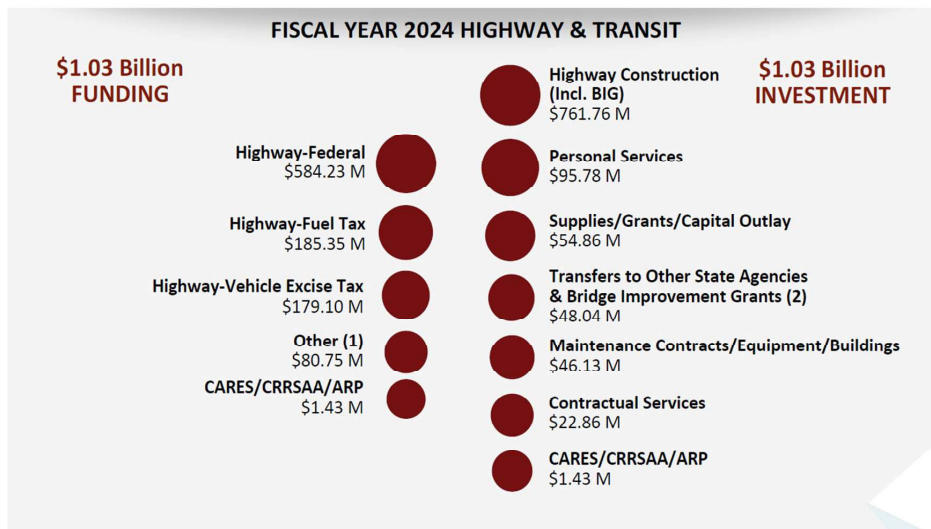
Airport	Amount
Aberdeen	\$1,200,000
Hot Springs	\$27,000
Rapid City	\$3,047,126
Sioux Falls	\$2,561,801
Spearfish	\$1,319,073
Sturgis	\$210,000
Tea	\$735,000
Watertown	\$900,000

18

Aeronautic Fund Balance



FY24 Highway & Transit Funding and Investment

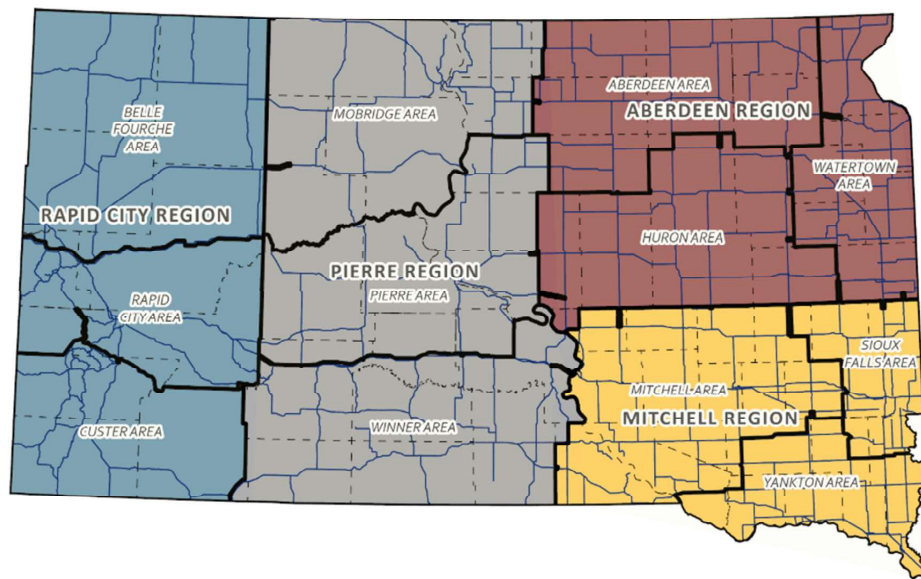


Who We Are



21

Region and Area Statewide Map



22

Buildings and Facilities

- 403 Total Buildings
- 88 Shops / Labs
- 13 Offices
- 40 Cold Storage
- 83 Storage Sheds
- 21 Rest Area and Port Of Entry



EQUIPMENT FLEET

- 5,417 Total Pieces
- \$206M Total Value
- 445 Plow Trucks
- 26 Tow Plows
- 23 Graders w/ V-Plows



Maintenance and Operations

- Winter Maintenance
- Traveler Information
- Pavement Preservation
- Roadside Maintenance
- Pavement Marking / Signing
- Drainage / Culverts
- Bridge Preservation
- Emergency Response



Developing Projects



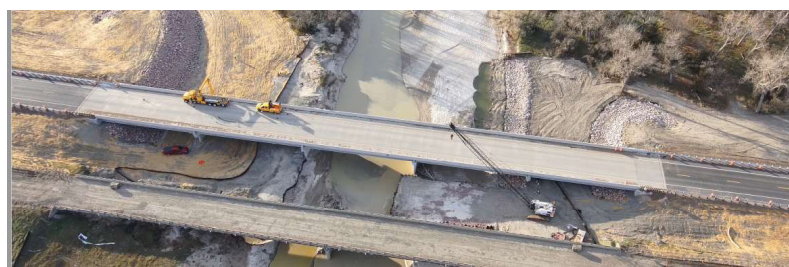
Statewide Transportation Improvement Program



27

Construction

- Project Management
- Material Testing
- Quality Control Inspections
- Administering Contracts
- Public Outreach and Relations



28

Significant Projects

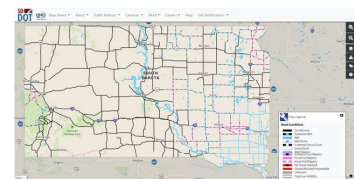


29

SD511, SOCIAL MEDIA & WEBSITE ENGAGEMENT Statistics Jan. 1, 2024 - Dec. 1, 2024

SD511:

- **9,757** SD511 Subscribers
(User is signed up for an account with at least one active email or text alert).
- **102,000+** Calls to 511
- **2 Million+** Website Sessions
- **1.3 Million+** Mobile App Sessions



Social Media:

- **60,426** Facebook Followers
(Increase of 10,842+ in last year)
- **2.5 Million+** Visitors to all SDDOT Accounts
(Facebook, Instagram, LinkedIn, and X.)

Social media posts (summer construction or winter weather) drive people to SD511 for the latest road conditions and alerts!

We also use social media (and SD511) to provide direct links to our website for customers to find more detailed project construction information.

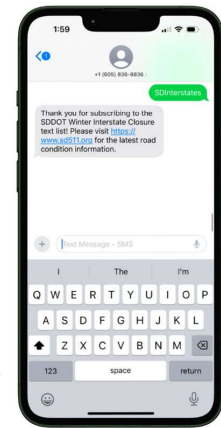
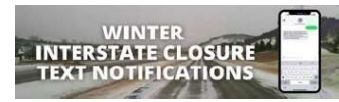
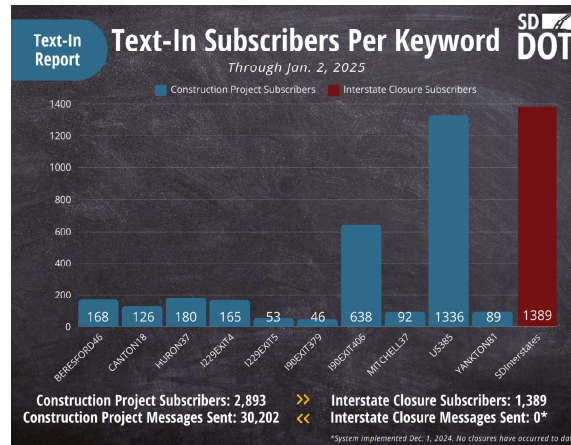
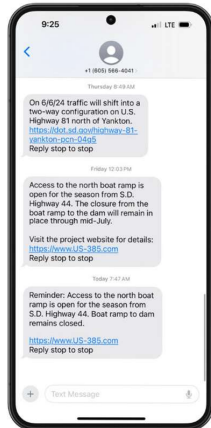
Website:

- **838,939** Views to <https://dot.sd.gov>
- **291,985** Active Users



30

Text-In Notification System Metrics (Jan. – Dec., 2024)



- Project text notifications were used on 11 construction projects in 2024.
- Interstate text notification is a new initiative. Graph shows subscribers to date; but Interstates have NOT been closed at this point.

31

Other Modes of Transportation



PUBLIC TRANSIT



**AIRPORT/
AERONAUTICS**



**STATE OWNED
RAILROADS**

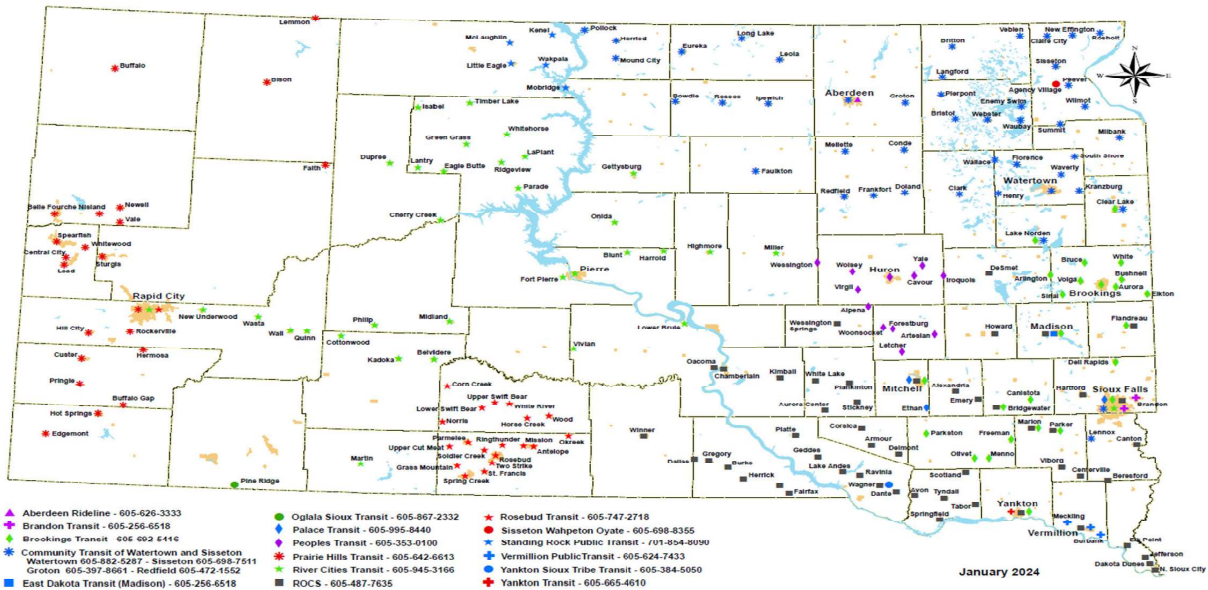
32

Transit



SD Public Transit Network

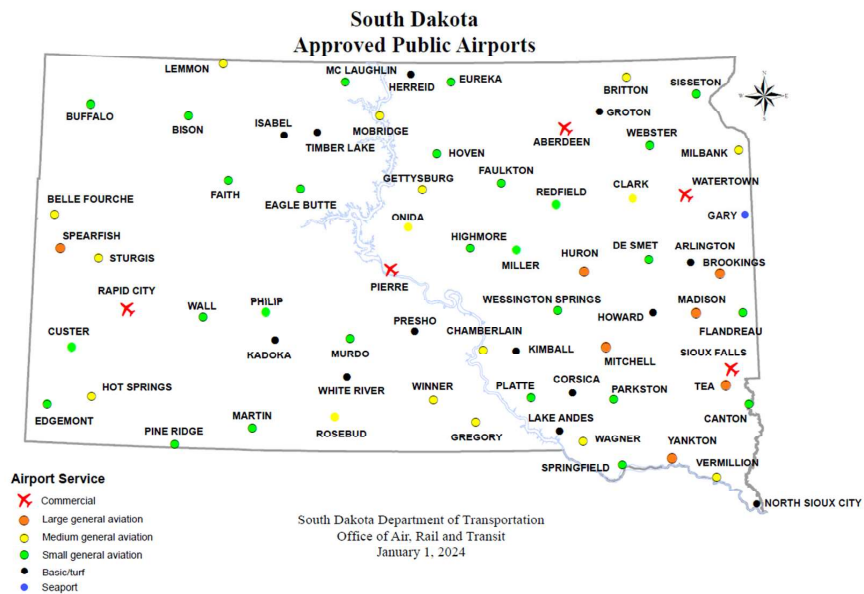
South Dakota Communities Served By Rural and Tribal Transit Providers



Aeronautics



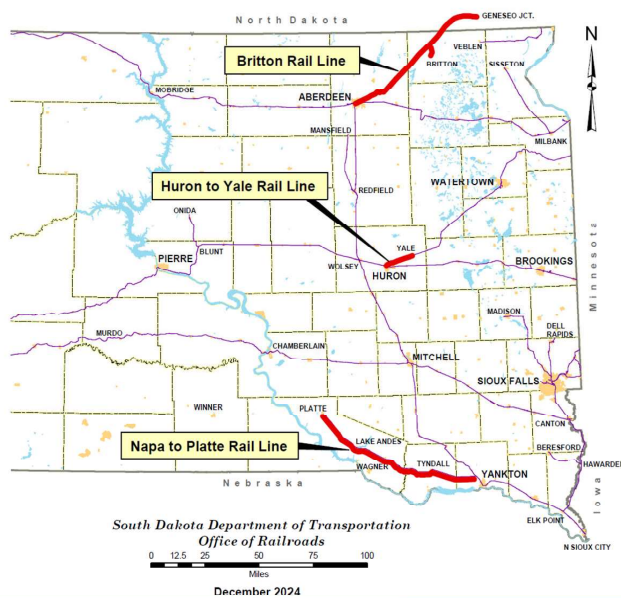
SD PUBLIC AIRPORTS



State Owned Railroads



South Dakota Railroad Lines Still Under State Ownership



South Dakota Railroad Grant Projects (active projects)

PROJECT	PROJECT TYPE	GENERAL FUNDS	TRUST FUNDS	FEDERAL FUNDS	OTHER FUNDS	TOTAL FUNDS
RCP&E Infrastructure improvements for bridges and culvert (STC 2021)	Rehabilitation			\$ 878,892	\$ 219,723	\$ 1,098,615
Ringneck and Western Locomotive Shop and track (STC 2021)	New Constuction			\$ 1,799,009	\$ 1,199,339	\$ 2,998,348
Ringneck & Western Meet and Pass Siding (STC 2020)	Rehabilitation		\$ 640,000	\$ 2,357,352	\$ 300,000	\$ 3,297,352
RCP&E Frieght Capacity Expansion (RAISE 2021)	Rehabilitation	\$20,000,000		\$ 22,000,000	\$42,000,000	\$ 84,000,000
SMRR 37 miles of RR Rehabilitation (2022 CRISI)	Rehabilitation	\$ 6,250,000		\$ 24,712,204	\$ 50,000	\$ 31,012,204
D&I Total rail replacement of 11.84 miles of rail. (22&23 STC)	Rehabilitation			\$ 9,957,246	\$ 2,489,311	\$ 12,446,557
Belle Fourche Expansion (22&23 STC)	New Construction			\$ 963,440	\$ 240,860	\$ 1,204,300
DMVV Rehab ND line (state grant)	Rehabilitation		\$3,991,817			\$ 3,991,817
Britton Line rehab (22&23 STC)	Rehabilitation		\$2,640,054	\$ 17,600,361	\$ 1,760,036	\$ 22,000,451
	Rehabilitation					
RCP&E rehab of line between Rapid City & Wyoming border (22&23 STC)	Rehabilitation			\$ 14,062,328	\$ 6,026,712	\$ 20,089,040
	Rehabilitation					
Ringneck & Western repair from Mitchell to Presho (22&23 STC)	Rehabilitation			\$ 8,310,932	\$ 2,077,733	\$ 10,388,665
RCP&E Repair culverts (22&23 STC)	Rehabilitation			\$ 3,241,040	\$ 810,260	\$ 4,051,300
		\$26,250,000	\$7,271,871	\$105,882,804	\$57,173,974	\$196,578,649

39

Enhancements

Enhancements and Innovations Variable Speed Limits



System Tools

Core System Components



VSL Signs



Environmental Sensors



Traffic Detection



Traffic Cameras

Supporting Devices



Dynamic Message Sign



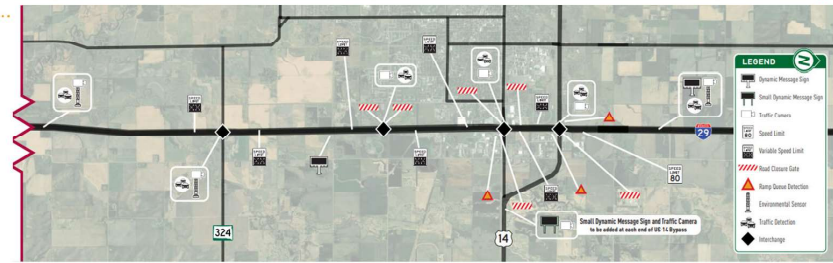
Ramp Queue Detection



Road Closure Gates

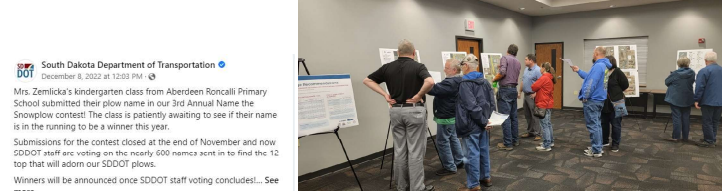


Road Closure Gate Signs



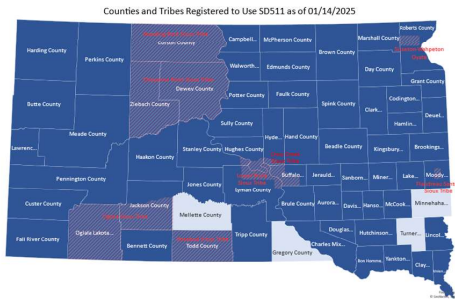
Enhancements and Innovations

Public, Stakeholder & Partner Engagement



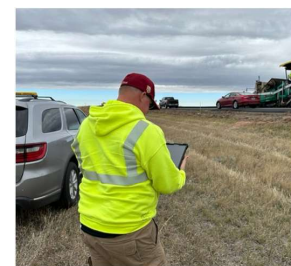
Winter Maintenance Improvements

- Traveler Information – County and Tribal Information
- State Highway Closures
- Navigation Apps

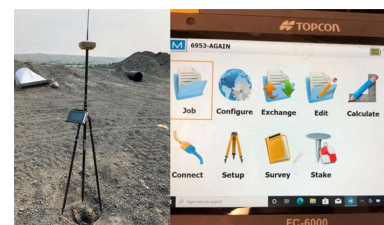


IT System Updates

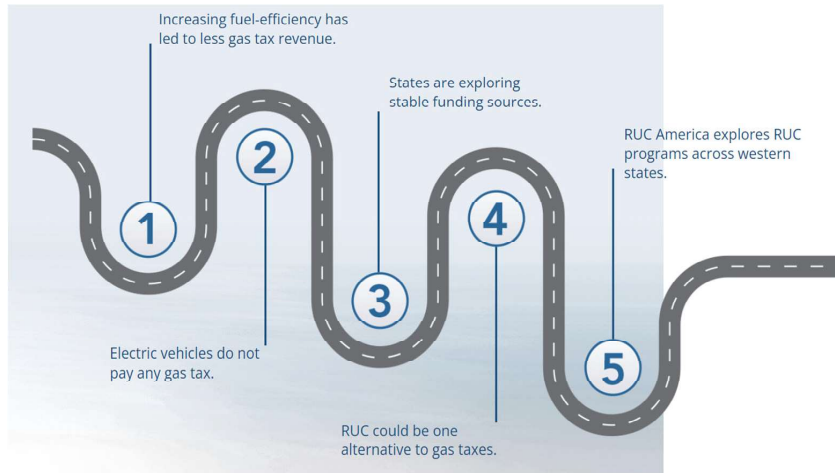
- Construction Management (E-Construction)
- Maintenance Equipment Management System (MEMS)
- IT Road Map for the Future



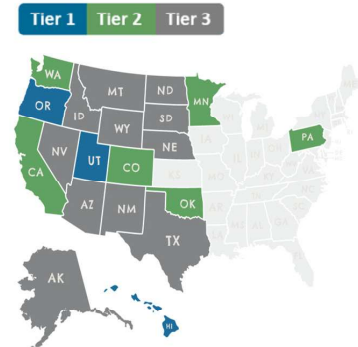
	SFY 2025				SFY 2026				SFY 2027			
	1st Quarter	2nd Quarter	3rd Quarter	4th Quarter	1st Quarter	2nd Quarter	3rd Quarter	4th Quarter	1st Quarter	2nd Quarter	3rd Quarter	4th Quarter
Finance Division												
BISON - State Accounting System	BISON Implementation											
Operations												
Maintenance and Equipment Management System (MEMS)	Phase One	Phase two			Phase Three				Phase Four			
eConstruction (CM&P and MS&T)	eConstruction Implementation											
P&E												
No major changes slated at this time. Improvement or accessory systems as needed												
Bureau of Finance and Management												
Evergreen - TKS Replacement							???					



Vehicle Miles Traveled Study



RUC America MEMBER LEGEND

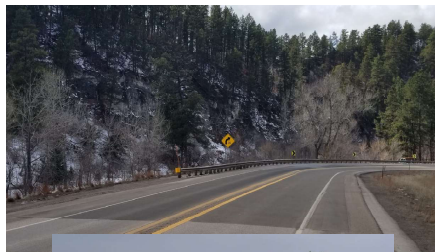


45

Enhancements and Innovations

Safety Enhancements

- HFST - High Friction Surface Treatment
- Rumble Strips



High friction surface treatment on over 75 horizontal curves **reduced winter road condition crashes by**



Over 500 miles of shoulder rumble strips on two-lane county and tribal roads **reduced road departure crashes by**



Over 700 miles of centerline rumble strips reduced on two-lane rural roadways

reduced fatal/injury crashes by



reduced cross-centerline crashes by

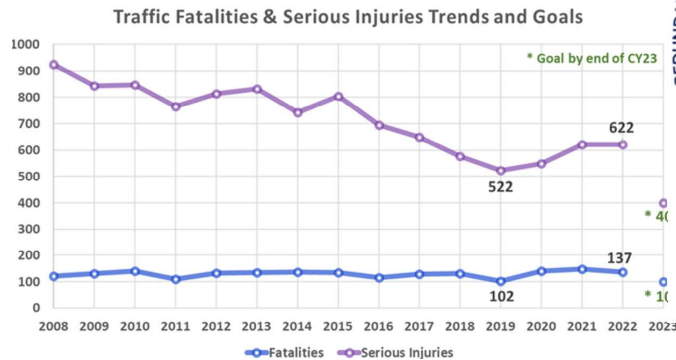


46

Highway Safety

Six Key Principles

- Death & Serious Injuries are Unacceptable
- Humans Make Mistakes
- Redundancy is Crucial
- Safety is Proactive
- Responsibility is Shared
- Humans are Vulnerable



Questions?

Mailing Address

Department of Transportation
 Becker-Hansen Building
 700 E Broadway Ave.
 Pierre, SD 57501

Email Address

joel.jundt@state.sd.us

Phone Number

605-773-5105

