



Division of Planning & Engineering  
Office of Right of Way  
700 E. Broadway Avenue  
Pierre, South Dakota 57501  
O: 605.773.3746 | F: 605.773.5867  
[dot.sd.gov](http://dot.sd.gov)

February 14, 2023

Mike Behm,  
Director of Planning and Engineering  
Department of Transportation  
700 E. Broadway Avenue  
Pierre, South Dakota 57501

RE: February 23, 2023 Transportation Commission Agenda

Dear Mr. Behm:

The following items are recommended for Commission consideration:

1. Request Transportation Commission approval to transfer by resolution to the City of Tabor the following property acquired for highway right-of-way:

Lot A in Lot H1 of the NE1/4 SE1/4 of Section 23, Township 94 North, Range 58 West of the 5th P.M., Town of Tabor, Bon Homme County, South Dakota.

Said Lot A contains 1.45 acres, more or less.

This resolution will transfer a portion of Lidice Street DOT right of way as approved by the city of Tabor Town Board. The right of way described above would be transferred to the city of Tabor and the city of Tabor would accept ownership, jurisdiction, operational and maintenance responsibilities of the above-described right-of-way.

Yankton Area DOT recommends the transfer. (See attachments)

2. Abandonment – Harding County

Request Transportation Commission approval to abandon by resolution the following property acquired for highway right-of-way:

Lot H1 in the SW1/4 SW1/4 of Section 2, Township 18 North, Range 1 East of the B.H.M., Harding County, South Dakota.

Contains 0.11 acre, more or less.

Lot H1 of Lot 1 of Block "B" of Kerr's Addition to the Town of Camp Crook, Harding County, South Dakota.  
Contains 0.05 acre, more or less.

Lot A in Lot H1 in Lot 5 in Block A of Kerr's Addition to Camp Crook, Harding County, South Dakota.

Contains 0.05 acre, more or less.

Lot H1 of Lot 5 of Block "D" of Catron's Addition to the Town of Camp Crook, Harding County, South Dakota.

Contains 0.05 acre, more or less.

Lot H2 in Lot 5 in Block A of Kerr's Addition to Camp Crook, Harding County, South Dakota.

Contains 0.08 acre, more or less.

Lot H2 in Lot 5 in Block D of Catron's Addition to Camp Crook, Harding County, South Dakota.

Contains 0.08 acre, more or less.

Lot H2 in Lot 1 in Block B of Kerr's Addition to Camp Crook, Harding County, South Dakota.

Contains 0.09 acre, more or less.

Lot H1 in Tract B of Gov't Lot 12 in Section 2, Township 18 North, Range 1 East of the B.H.M., Harding County, South Dakota.

Contains 0.14 acre, more or less.

The above right of way properties are located along Hwy 20 near the Town of Camp Crook and are no longer needed for highway purposes. Abandonment is recommended by DOT Belle Fourche Area. (See attachments)

3. Request Transportation Commission approval to grant an electrical transmission line and poles permanent easement to Black Hills Energy of Rapid City, South Dakota upon the following DOT property:

Lot PE1 in Lot B in Lot 1 in the NW1/4 NE1/4 and the NE1/4 NE1/4 of Section 15, Township 3 North, Range 6 East of the B.H.M., Meade County, South Dakota.

Lot PE1 is located north of Piedmont Exit 46 on the east side of Interstate 90. Granting the easement as shown on Exhibit A will allow future electrical transmission line to be relocated as required by DOT project IM 0901(187)46, PCN 034J.

Black Hills Energy accepts liability and financial responsibility for the electrical transmission line and poles. All State and Federal guidelines will be followed during the construction. (See attachments)

4. Abandonment – Deuel County

Request Transportation Commission approval to abandon by resolution the temporary easements on Deuel County Project P 0022(070)360, PCN 069C.

5. Abandonment – Gregory County

Request Transportation Commission approval to abandon by resolution the temporary easements on Gregory County DOT Project P 0044(201)276, PCN 05GP.

6. Abandonment – Lincoln County

Request Transportation Commission approval to abandon by resolution the temporary easements on Lincoln County Project NH 0115(48)76, PCN 0214.

PLAT OF LOT A

IN LOT H1 OF THE NE1/4SE1/4 OF  
SECTION 23, T94N, R58W OF THE 5TH P.M.,  
TOWN OF TABOR,  
BON HOMME COUNTY, SOUTH DAKOTA.

Showing a parcel of land for Highway purposes, transferred to the City Tabor

Scale: 1 inch = 200 feet

- LEGEND
- = existing right of way
  - = found R.O.W. corner
  - = set R.O.W. corner
  - = found P.L.S.S. corner
  - = set P.L.S.S. corner
  - = calculated corner
  - = found property corner
  - = set property corner
  - (n) = not used for boundary location

SOUTH PROPERTY LINE  
CHARYAT ADDITION (1917)  
ALSO CITY LIMIT LINE (1955)

LOT A OF LOT H1  
IN THE NE1/4SE1/4 OF  
SECTION 23-94-58  
(63242 SF)

	Bear i n g	Lengt h
L1	N 58° 17' 38" W	120.42'
L2	N 02° 09' 32" W	599.28'
L3	N 87° 57' 15" E	100.00'
L4	S 02° 09' 30" E	666.19'

SE 1/16TH CORNER  
SECTION 23-94-58

Note 1: The coordinates and bearings  
shown on this plat are based on the South Dakota  
State Plane Coordinate System Grid South Zone

Note 2: The distances shown on this plat are ground distances.

Drawn By JAMES ARENS Date 10/11/2022  
Checked By \_\_\_\_\_ Date \_\_\_\_\_

SURVEYOR'S CERTIFICATE

I, James L. Arens, Registered Land Surveyor, in and for the State of South Dakota, do hereby certify that as ordered by the South Dakota Department of Transportation the parcel of land as shown on this plat has been surveyed at my direction and under my control, and such parcel of land shall be hereafter known by the lot number designated herein. The location and dimensions of the parcel are shown on this plat.

In witness whereof, I have set my hand and seal this \_\_\_\_\_ day of \_\_\_\_\_ A.D., 20 \_\_\_\_.

Registered Land Surveyor  
Registration No. 6249

OFFICE OF REGISTER OF DEEDS

State of South Dakota

County of \_\_\_\_\_ ss

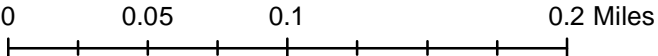
Filed for record the \_\_\_\_\_ day of \_\_\_\_\_, A.D., 20\_\_\_\_, at \_\_\_\_\_ M., and recorded in Books of Plats \_\_\_\_\_ on Page  
\_\_\_\_\_ therein.

Register of Deeds

by

Deputy





PLAT OF LOT A

in Lot H1 in Lot 5 in Block A of Kerr's Addition to Camp Crook

HARDING COUNTY, SOUTH DAKOTA

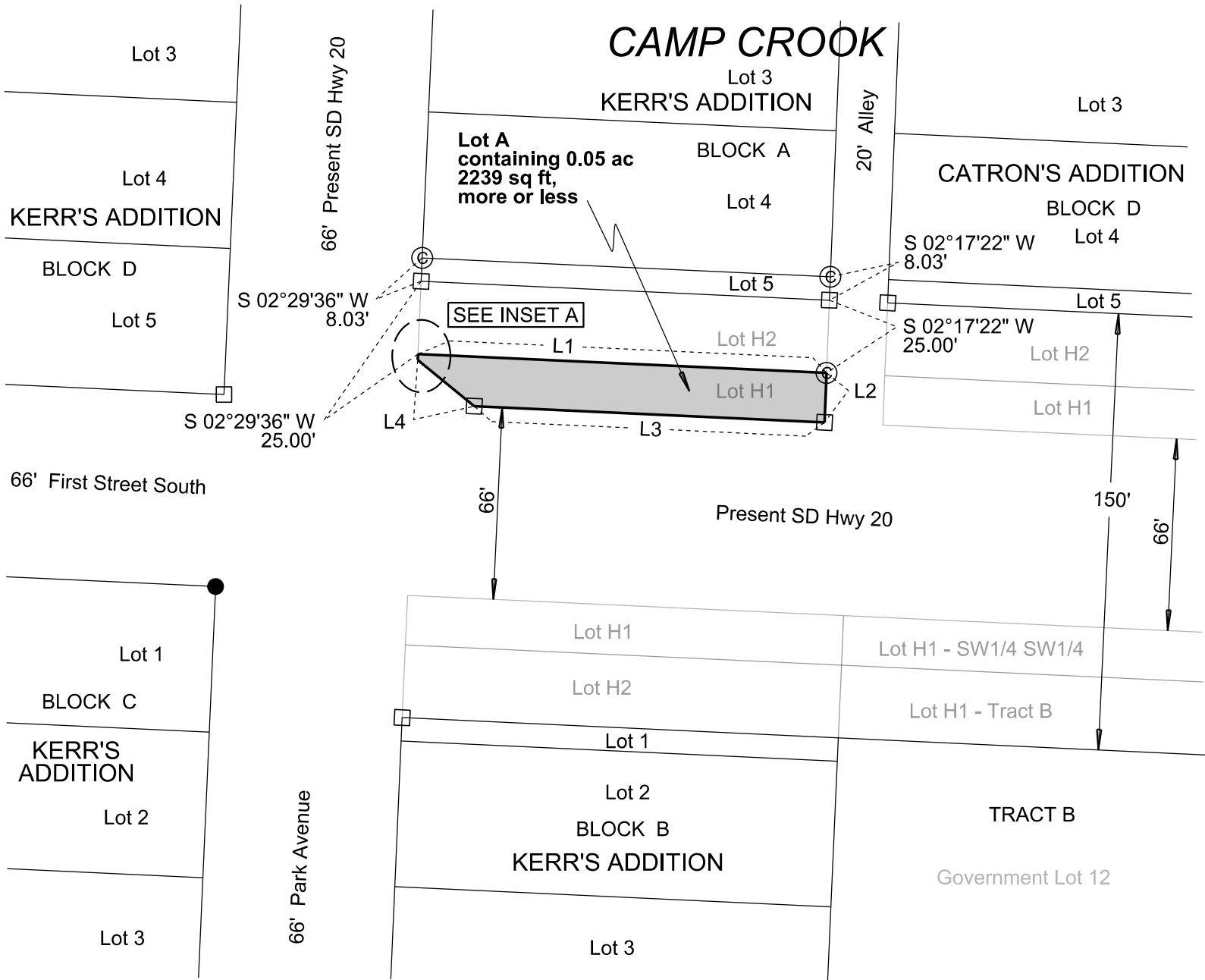
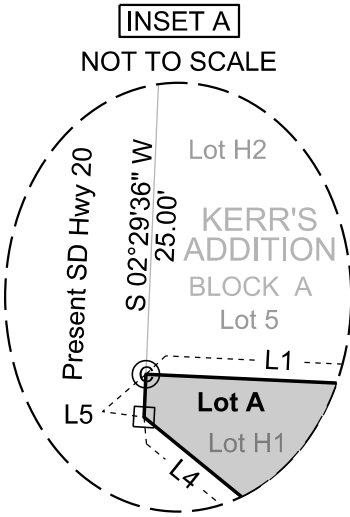
Showing a parcel of land for highway purposes to be abandoned

Scale: 1 inch = 50 feet

LEGEND

- = found R.O.W. corner
- ⊙ = calculated corner
- = set property corner

		Bear i n g		Lengt h
L1	S	87° 20' 48"	E	140. 47
L2	S	02° 17' 22"	W	17. 00
L3	N	87° 20' 48"	W	120. 49
L4	N	50° 44' 22"	W	25. 06
L5	N	02° 29' 36"	E	2. 06



Note 1: The coordinates, bearings, distances and areas shown on this plat are based on the South Dakota State Plane Coordinate System Grid North - North Zone ITRF to NAD 83/11 epoch 2010.00 Geoid 12A SF = 0.9998306404

Note 2: All monumentation will be set upon project completion.

Revised Date: 12/04/2021 KLH

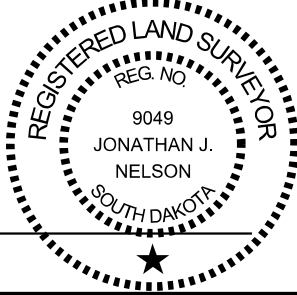
Drawn By Kimberly L. Herrman Date 05/20/2019  
Checked By Jon Nelson Date 12/04/2021

SURVEYOR'S CERTIFICATE

I, JONATHAN J. NELSON, Registered Land Surveyor, in and for the State of South Dakota, do hereby certify that as ordered by the South Dakota Department of Transportation the parcel of land as shown on this plat has been surveyed at my direction and under my control, and such parcel of land shall be hereafter known by the lot number designated herein. The location and dimensions of the parcel are shown on this plat.

In witness whereof, I have set my hand and seal this \_\_\_\_\_ day of \_\_\_\_\_ A.D., 20 \_\_\_\_.

Registered Land Surveyor  
Registration No. 9049



OFFICE OF REGISTER OF DEEDS

State of South Dakota

County of \_\_\_\_\_ ss

Filed for record the \_\_\_\_\_ day of \_\_\_\_\_, A.D., 20 \_\_\_\_\_, at \_\_\_\_\_ M., and recorded in Books of Plats \_\_\_\_\_ on Page \_\_\_\_\_ therein.

Register of Deeds

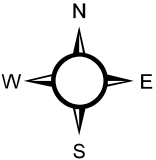
by

Deputy



aban

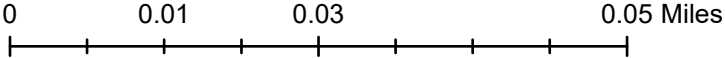


# Camp Crook - ROW Abandonment



**Legend**

-  Proposed Abandonment
-  Section Line



## PLAT OF LOT PE1

Notwithstanding the fact that the respondents' respective "residence" is the same, the respondents are not in the same household and the NE 1/4 NE 4 of Section 15, Township 3 North, Range 6 East of Range 4M is not the same as the NE 1/4 NE 4 of Section 15, Township 3 North, Range 6 East of Range 4M.

MEAD COUNTY SUBURBS-A

© 1999 Blackwell Science Ltd, *Journal of Internal Medicine* 245: 115–122

## VEGUNI)

- ✱ board corner
- set corner

All monumentation will be set upon project completion.

[illegible]

North Dakota State University, Dickinson, North Dakota  
 North Dakota State University, Dickinson, North Dakota  
 North Dakota State University, Dickinson, North Dakota

Figure 21: (a)  $\mu$  as a function of  $\beta$  and  $\gamma$  for the function  $\mu(\beta, \gamma) = \frac{1}{2}(\beta + \gamma)$ . (b)  $\mu$  as a function of  $\beta$  and  $\gamma$  for the function  $\mu(\beta, \gamma) = \frac{1}{2}(\beta + \gamma)$ . (c)  $\mu$  as a function of  $\beta$  and  $\gamma$  for the function  $\mu(\beta, \gamma) = \frac{1}{2}(\beta + \gamma)$ . (d)  $\mu$  as a function of  $\beta$  and  $\gamma$  for the function  $\mu(\beta, \gamma) = \frac{1}{2}(\beta + \gamma)$ .

Received 1.29.14 BC

100-443886-1  
 100-443886-2  
 100-443886-3  
 100-443886-4  
 100-443886-5  
 100-443886-6  
 100-443886-7  
 100-443886-8  
 100-443886-9  
 100-443886-10  
 100-443886-11  
 100-443886-12  
 100-443886-13  
 100-443886-14  
 100-443886-15  
 100-443886-16  
 100-443886-17  
 100-443886-18  
 100-443886-19  
 100-443886-20  
 100-443886-21  
 100-443886-22  
 100-443886-23  
 100-443886-24  
 100-443886-25  
 100-443886-26  
 100-443886-27  
 100-443886-28  
 100-443886-29  
 100-443886-30  
 100-443886-31  
 100-443886-32  
 100-443886-33  
 100-443886-34  
 100-443886-35  
 100-443886-36  
 100-443886-37  
 100-443886-38  
 100-443886-39  
 100-443886-40  
 100-443886-41  
 100-443886-42  
 100-443886-43  
 100-443886-44  
 100-443886-45  
 100-443886-46  
 100-443886-47  
 100-443886-48  
 100-443886-49  
 100-443886-50  
 100-443886-51  
 100-443886-52  
 100-443886-53  
 100-443886-54  
 100-443886-55  
 100-443886-56  
 100-443886-57  
 100-443886-58  
 100-443886-59  
 100-443886-60  
 100-443886-61  
 100-443886-62  
 100-443886-63  
 100-443886-64  
 100-443886-65  
 100-443886-66  
 100-443886-67  
 100-443886-68  
 100-443886-69  
 100-443886-70  
 100-443886-71  
 100-443886-72  
 100-443886-73  
 100-443886-74  
 100-443886-75  
 100-443886-76  
 100-443886-77  
 100-443886-78  
 100-443886-79  
 100-443886-80  
 100-443886-81  
 100-443886-82  
 100-443886-83  
 100-443886-84  
 100-443886-85  
 100-443886-86  
 100-443886-87  
 100-443886-88  
 100-443886-89  
 100-443886-90  
 100-443886-91  
 100-443886-92  
 100-443886-93  
 100-443886-94  
 100-443886-95  
 100-443886-96  
 100-443886-97  
 100-443886-98  
 100-443886-99  
 100-443886-100

0123214  
01286014

## SURVEYOR'S CERTIFICATE

1. Fresh Trench,

[illegible]

In witness whereof, I have set my hand and seal this

29<sup>th</sup> Jan 1897

Leah P. Welch  
Maple Hill and Survey  
Registration No. 6576



State of the art: Quasars

(6)  $\int_0^1 P^1(x) dx$ 

of the vehicle, the

OFFICE OF REGISTER OF DEEDS

Doc# 000389

 $\eta^4$        $\eta^4$ 

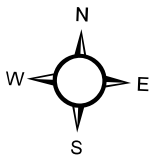
3465 Net. \$20.00

Denise A. Davies  
Professor of Biology

For C. C. C. C.

067p





**Legend**

 Section Line

0 0.04 0.08 0.16 Miles