



# Department of Transportation

Aberdeen Region Office  
 2735 US12  
 Aberdeen, SD 57401  
 PHONE: 605/626-2244

## MEMORANDUM

**TO:** Craig Smith, Director of Operations

**FROM:** Stacy Bartlett, Access Management Engineer

**DATE:** March 12, 2021

**SUBJECT:** Transportation Commission Consideration of Control of Access Relinquishment in Brown County on US281 in Aberdeen

SDDOT has received an access request from the City of Aberdeen on US281 in Aberdeen for maintenance use. US281 was constructed in 2000 with Control of Access (COA) under Project NH 0281(55)194. The City of Aberdeen, **property highlighted in yellow**, is requesting relinquishment of access for a 20' approach to access a detention pond and lift station for maintenance and emergency use;

Proposed Approach  
 Station 48+80R



The entirety of the proposed approach will be located on the City property and will be constructed with a grass top to appear as a ditch block. The proposed access will have very low use – 2-3 times/year for semiannual cleaning, lift station maintenance and/or emergency situations (plugged pumps, power outage, etc.) and is the minimum width to allow a service vehicle to safely exit the highway. Stopping sight distance (360') and intersection sight distance (800') for the 45 MPH posted speed limit are exceeded at the proposed location and although the spacing requirement of 1,320' for the free flow urban classification contained in **Chapter 70:09:02** of South Dakota Administrative Rules, is not met with the field approach to the south (approximately 1,150'), the proposed approach presents no concerns of safety or operations US281.

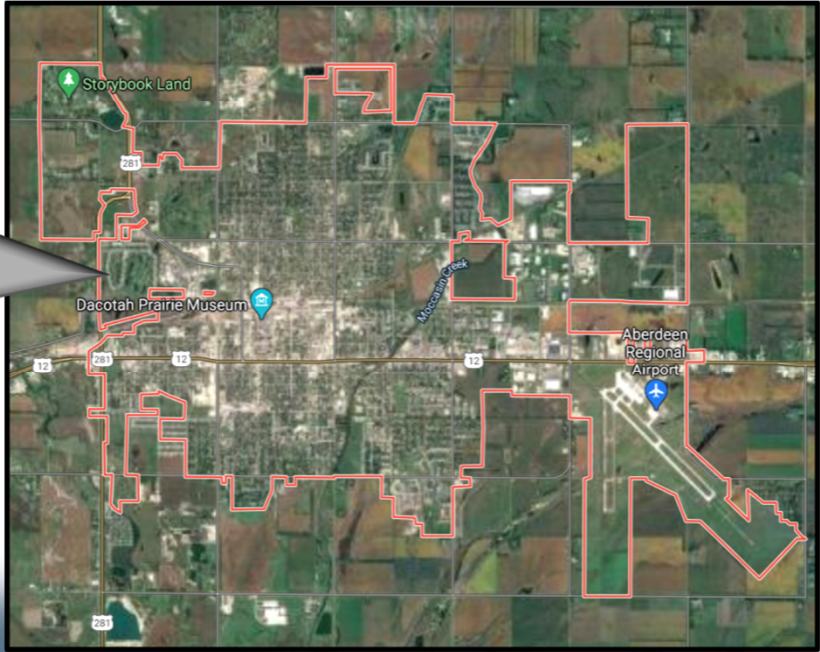
The Aberdeen Region Engineer supports the request for a break in the control of access to allow local government the ability to safely manage City infrastructure. SDDOT Environmental has no concerns with the proposed access location. SDDOT Legal Office concurs with the proposed relinquishment and proposed access location. The FHWA Division approves the request for a break in the control of access and supports the proposed access location. SDDOT ROW reviewed the appraisal for the relinquishment of COA and has determined the proposed approach has no value on the property.

# Consideration of US281 Access Relinquishment in Aberdeen, SD #5



NORTH

Proposed Approach  
Station 48+80R



Proposed Approach