



Division of Planning & Engineering  
Office of Right of Way  
700 E. Broadway Avenue  
Pierre, South Dakota 57501  
605.773.3746  
[dot.sd.gov](http://dot.sd.gov)

July 17, 2024

Mike Behm,  
Director of Planning and Engineering  
Department of Transportation  
Pierre, South Dakota 57501

RE: July 25, 2024 Transportation Commission Agenda

Dear Mr. Behm:

The following items are recommended for Commission consideration:

1. Condemnation – NH 0014(185)229, PCN 026Z, Hughes County

Request Transportation Commission resolution determining that the taking and damaging of real property interests in and to the following property is necessary for a public purpose and authorizing condemnation:

Parcel 9 & 9A – Marshall Weber

To date, the Department of Transportation has been unable to acquire the real property interests through negotiations for the project NH 0014(185)229, PCN 026Z, Hughes County - US14 From Sioux Ave to the divided highway west of SD1804 in Pierre. Project consists of urban grading, curb & gutter, ADA, signals, storm sewer, lighting, AC surfacing.

2. Request Transportation Commission approval to abandon by resolution the following properties acquired for highway purposes:

Lot A in Lot H4, in the SE1/4 of the SE1/4 of Section 7, Township 4 North, Range 6 East of the B.H.M., Meade County, South Dakota.

The property is excess after construction of Project IM-FP 0901(195)32, PCN 021G and is no longer needed for highway purposes. Abandonment is recommended by DOT Rapid City Area.

3. Request Transportation Commission approval to abandon by resolution the temporary easements on Roberts County Project P-B 0127(07)231, PCN 05GY. This project was on SD127 from 5.2 miles to 5.6 miles east of SD106. Construction included approach grading and replacing of structures RCBC over creeks.
4. Request Transportation Commission approval to abandon by resolution the temporary easements on Yankton County Project NH 0081(69)2, PCN 3870. This project was on US81 from approximately 1 mile south of the north junction of US81 and SD50 North. Construction included grading, curb & gutter, paving, roadway lighting and signals.

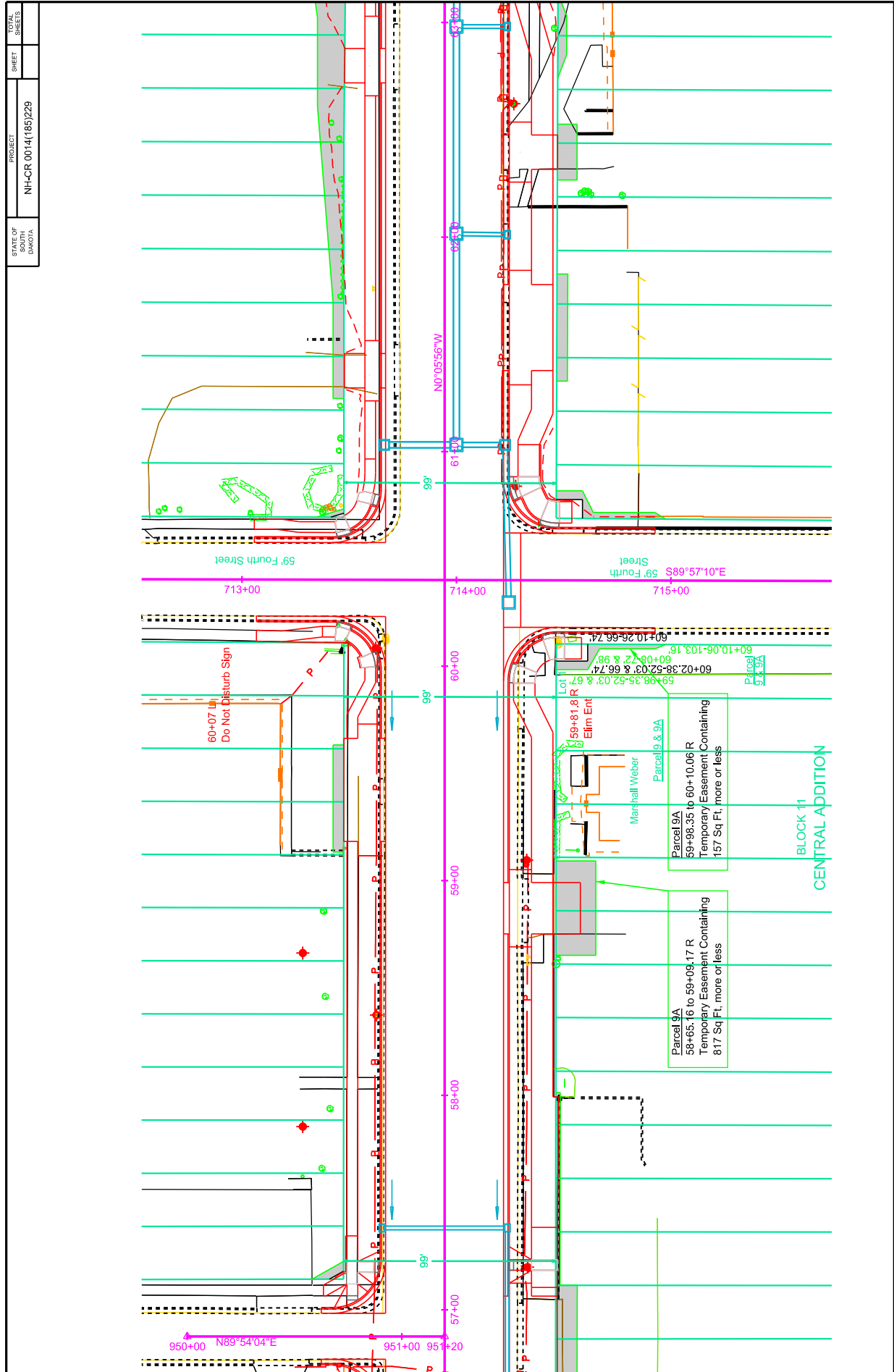
Sincerely,

A handwritten signature in blue ink that reads "John Keyes". The signature is written in a cursive, slightly slanted style.

John Keyes  
Program Manager

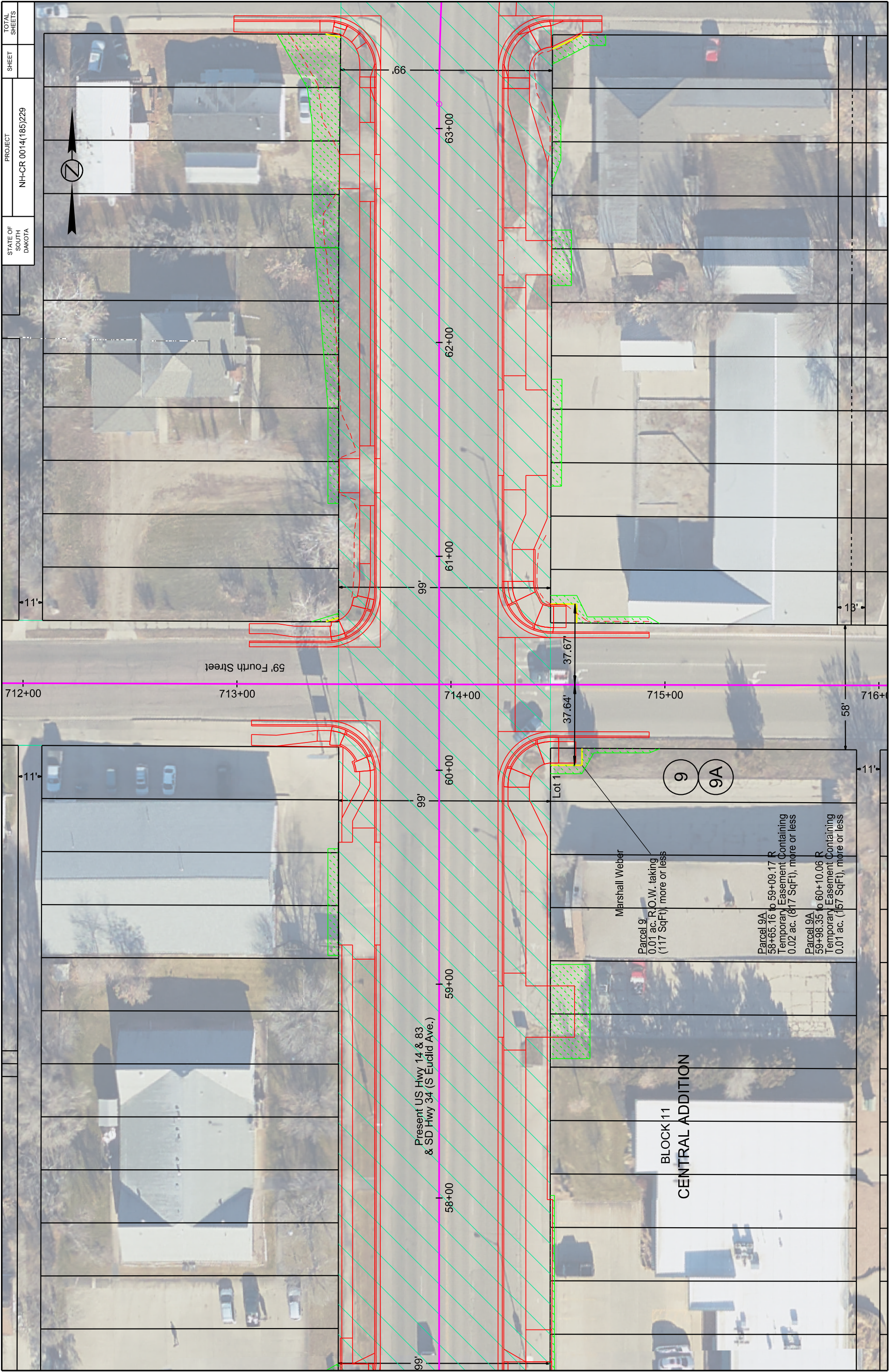
# ATTACHMENT A

ROW Item #1



STATE OF SOUTH DAKOTA	PROJECT NH-CR 0014(185)229	SHEET	TOTAL SHEETS
-----------------------------	-------------------------------	-------	-----------------







Parcel 9

# PLAT OF LOT H1

in Lot 1, Block 11, Central Addition to the City of Pierre

HUGHES COUNTY, SOUTH DAKOTA

Showing a parcel of land to be acquired for highway purposes

Scale: 1 inch = 50 feet

HUGHES COUNTY, SOUTH DAKOTA  
Showing a parcel of land to be acquired for highway purposes  
Scale: 1 inch = 50 feet

Drawn By M. Carson Date 01-31-2023  
Checked By B. Jensen Date 02-01-2023

REGISTERED LAND SURVEYOR

REG. NO.

8014

BRIAN J. JENSEN

SOUTH DAKOTA

★

## Plat 060p

## PLAT OF LOT A

in Lot H4, in the SE1/4 of the SE1/4 of Section 7 -  
Township 4 North - Range 6 East - B.H.M.

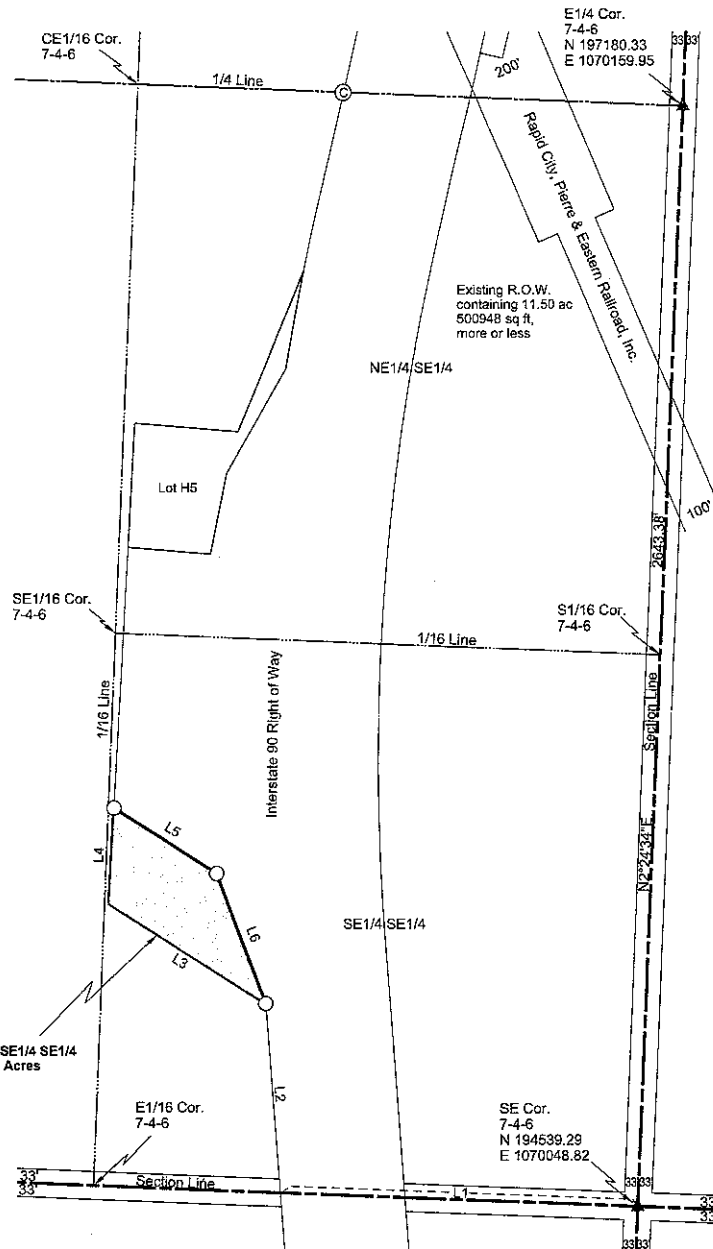
MEADE COUNTY, SOUTH DAKOTA  
Showing a parcel of land for highway purposes to be abandoned

Scale: 1 inch = 300 feet

- LEGEND**
- ▨ = existing right of way
  - = found R.O.W. corner
  - = set R.O.W. corner
  - ▲ = found P.L.S.S. corner
  - △ = set P.L.S.S. corner
  - ⊙ = calculated corner
  - = found property corner
  - = set property corner
  - (n) = not used for boundary location

Line Table		
Name	Length	Direction
L1	864.78	N 87°42'40" W
L2	451.57	N 4°20'07" W
L3	447.03	N 57°41'04" W
L4	229.07	N 3°08'11" E
L5	293.04	S 57°41'04" E
L6	332.54	S 20°42'41" E

Lot A - Lot H4 - SE1/4 SE1/4  
Containing 1.70 Acres  
74007 sq ft  
more or less



Note: The coordinates, bearings, distances and areas shown on this plat are based on the South Dakota State Plane Coordinate System North Zone NAD 83/2011 SF = 0.999839492

Revised 8-17-2020

Drawn By Michael Jordan Date July 27, 2020  
Checked By Michael Jordan Date July 27, 2020

## SURVEYOR'S CERTIFICATE

I, Michael A Jordan, Registered Land Surveyor, in and for the State of South Dakota, do hereby certify that as ordered by the South Dakota Department of Transportation the parcel of land as shown on this plat has been surveyed at my direction and under my control, and such parcel of land shall be hereafter known by the lot number designated herein. The location and dimensions of the parcel are shown on this plat.

In witness whereof, I have set my hand and seal this 20th day of December, A.D., 2021.

*Michael A. Jordan*  
Registered Land Surveyor  
Registration No. 5353



## OFFICE OF REGISTER OF DEEDS

State of South Dakota

County of \_\_\_\_\_ ss

Filed for record the \_\_\_\_\_ day of \_\_\_\_\_, A.D., 20\_\_\_\_, at \_\_\_\_\_ M., and recorded in Books of Plats \_\_\_\_\_ on Page \_\_\_\_\_ therein.

021G

Register of Deeds

by

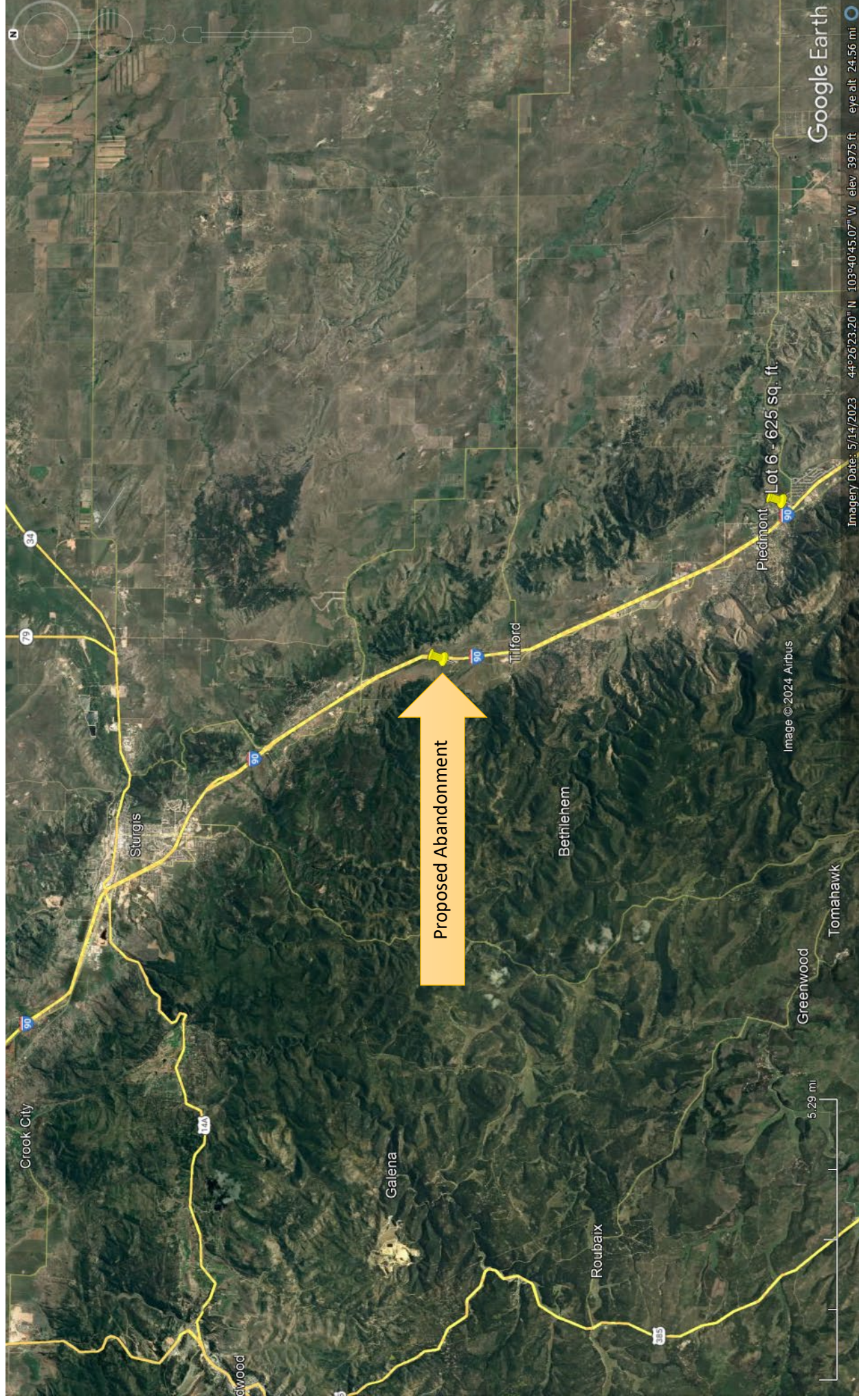
Deputy

323p1



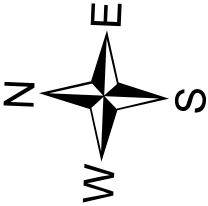
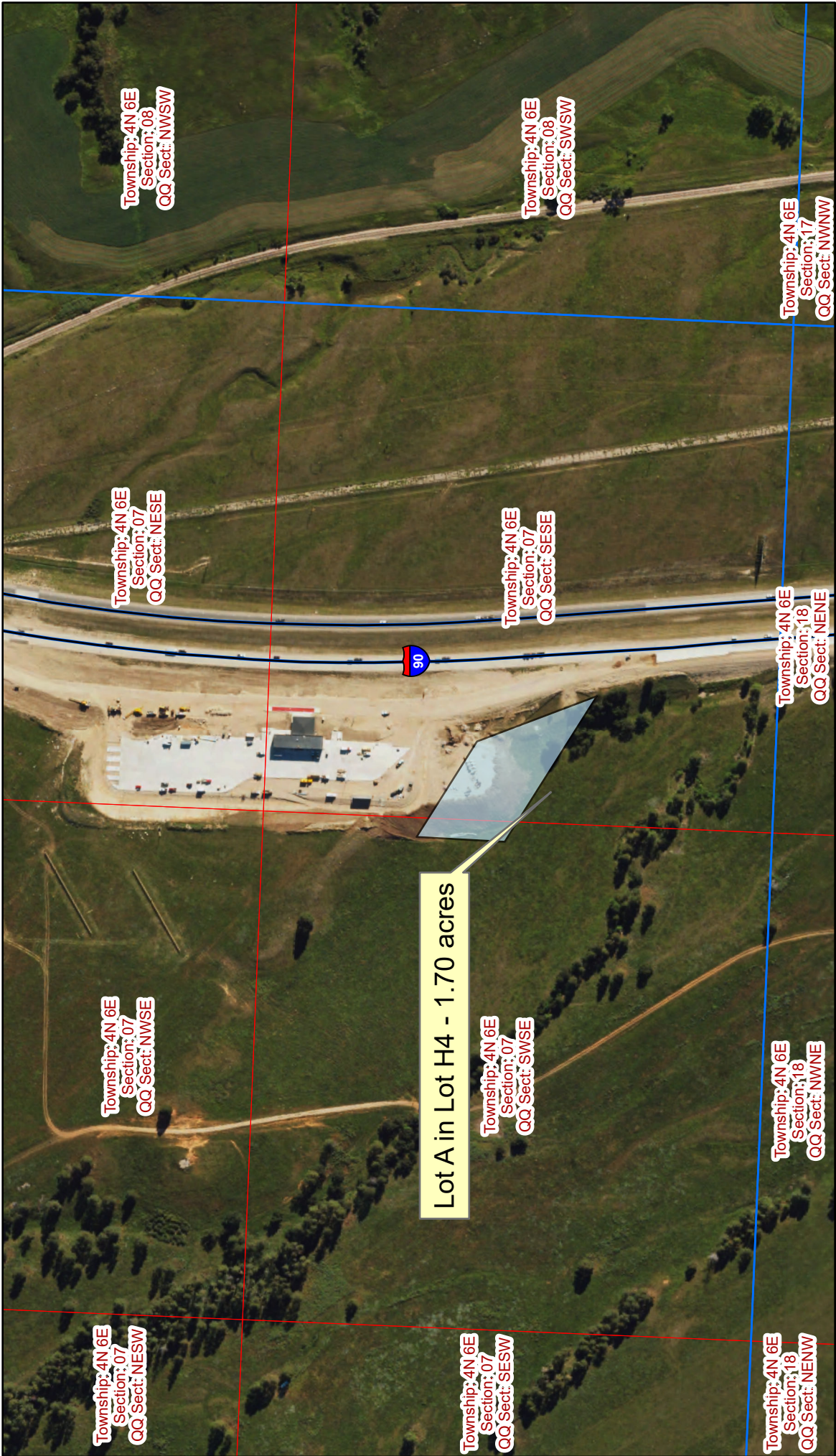
# Overview Map

Meade County



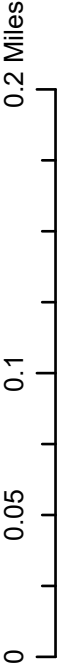


# Proposed Abandonment - Meade County



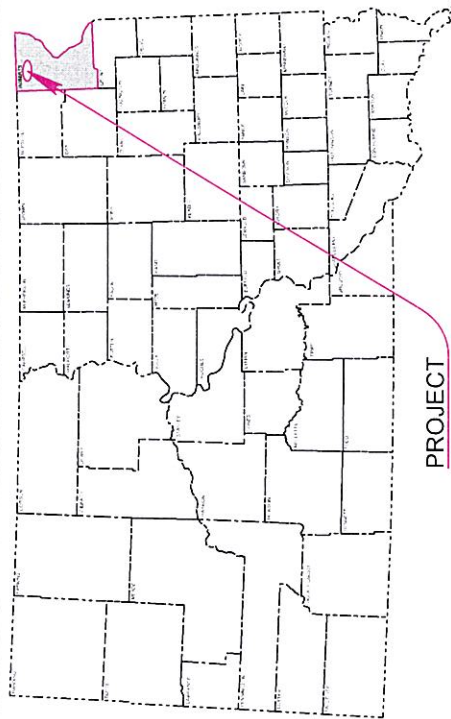
## Legend

Commission Items





STATE OF SOUTH DAKOTA	PROJECT	SHEET	TOTAL SHEETS
P-B 0127(07)231	P-B 0127(07)231	1	85
Filing Date:	04/28/2022		



STATE OF SOUTH DAKOTA  
DEPARTMENT OF TRANSPORTATION  
PLANS FOR PROPOSED

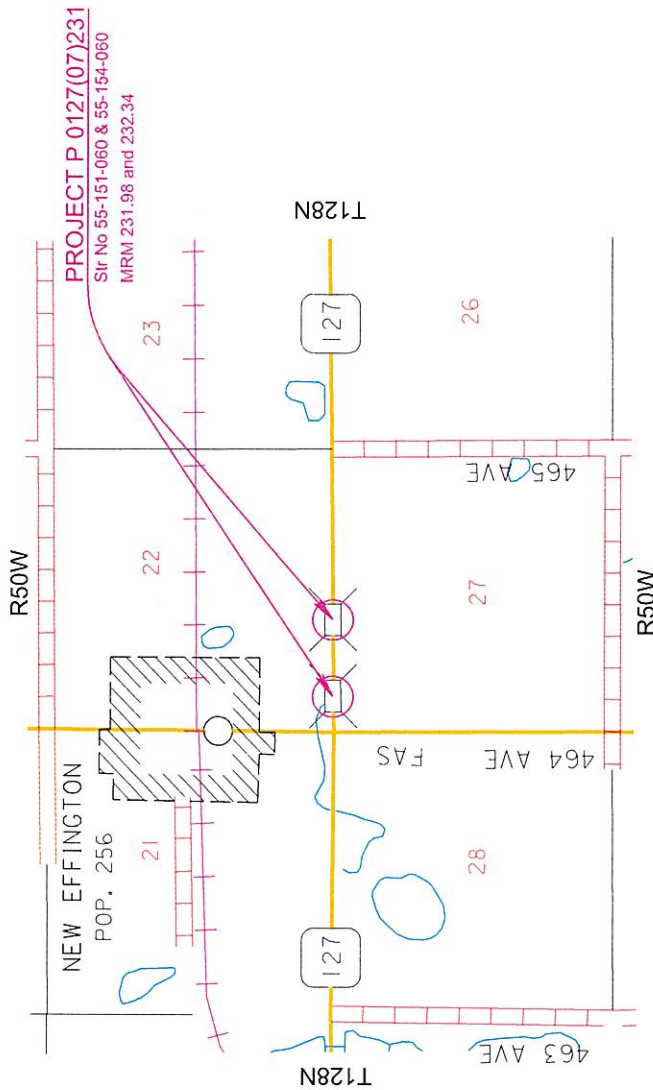
PROJECT P-B 0127(07)231  
SD HIGHWAY 127  
ROBERTS COUNTY

REPLACE STRUCTURES (RCBC), APPROACH GRADING, & ROW  
PCN 05GY

INDEX OF SECTIONS

- Section A: Estimate of Quantities and Environmental Commitments
- Section B: Grading Plans
- Section C: Traffic Control Plans
- Section D: Erosion and Sediment Control Plans
- Section E: Structure Plans
- Section F: Surfacing Plans
- Section X: Cross Sections

PROJECT

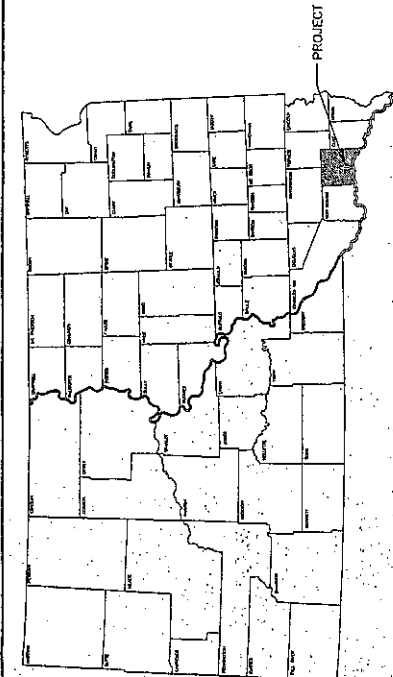


DESIGN DESIGNATION  
AADT (2020) 632  
AADT (2045) 679  
DHW 75  
DHW 50%  
DHW T% 8.1%  
AADT T% 19.0%  
V 70 mph

STORM WATER PERMIT  
Major Receiving  
Body of Water, Lake Traverse  
Estimated Project Area  
Total Project Area: 8 Acres  
Approx. Begin Lat/Long: 45.8487, -96.9153

# STATE OF SOUTH DAKOTA DEPARTMENT OF TRANSPORTATION

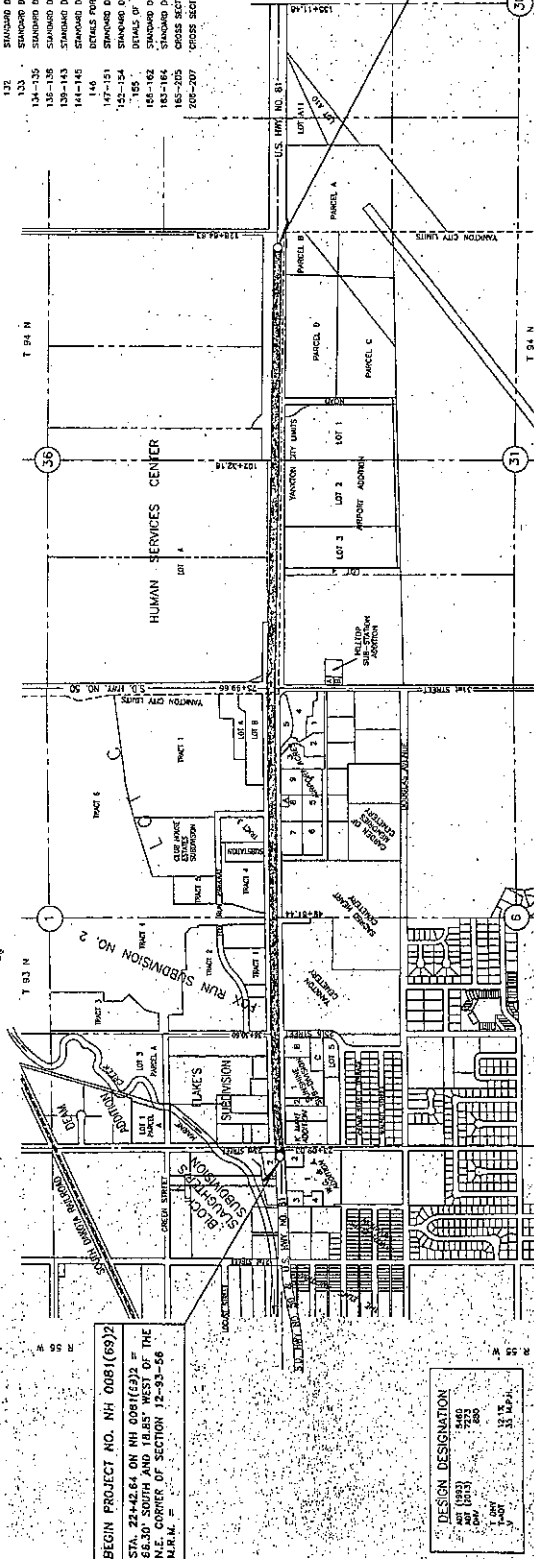
PLANS FOR PROPOSED  
PROJECT NO. NH 0081(69)2  
U.S. HWY. NO. 81  
YANKTON COUNTY  
GRADING, STORM SEWER, CURB & GUTTER, SURFACING,  
ROADWAY LIGHTING AND SIGNALS  
PCEMS NO. 3870



REVISION NO.	DATE	PROJECT NO.	SHEET NO.	TOTAL SHEETS
8	5.0.	NO 0081(69)2	1	207

## INDEX OF SHEETS

SHEET	DESCRIPTION
1	FILE SHEET AND LAYOUT MAP
2	ESTIMATE OF QUANTITIES
3-5	GENERAL NOTES
6	GENERAL NOTES
7-8	SURFACING NOTES AND BASES OF MATERIALS
9-10	TABLES OF QUANTITIES
11	ESTIMATE OF PAVEMENT
12-13	TYPICAL GRADING SECTIONS
14-15	TYPICAL GRADING SECTIONS
16-23	TRAFFIC CONTROL
24	STANDARD DETAILS FOR INTERSECTION
25-40	STANDARD DETAILS FOR INTERSECTION
41-44	STANDARD DETAILS FOR INTERSECTION
45-71	STANDARD DETAILS FOR INTERSECTION
72-85	STANDARD DETAILS FOR INTERSECTION
86-100	STANDARD DETAILS FOR INTERSECTION
101-110	STANDARD DETAILS FOR INTERSECTION
111-120	STANDARD DETAILS FOR INTERSECTION
121-126	STANDARD DETAILS FOR INTERSECTION
127-131	STANDARD DETAILS FOR INTERSECTION
132	STANDARD DETAILS FOR INTERSECTION
133	STANDARD DETAILS FOR INTERSECTION
134-135	STANDARD DETAILS FOR INTERSECTION
136-138	STANDARD DETAILS FOR INTERSECTION
139-143	STANDARD DETAILS FOR INTERSECTION
144-145	STANDARD DETAILS FOR INTERSECTION
146	STANDARD DETAILS FOR INTERSECTION
147-151	STANDARD DETAILS FOR INTERSECTION
152-154	STANDARD DETAILS FOR INTERSECTION
155	STANDARD DETAILS FOR INTERSECTION
156-162	STANDARD DETAILS FOR INTERSECTION
163-165	STANDARD DETAILS FOR INTERSECTION
166-170	STANDARD DETAILS FOR INTERSECTION
171-207	STANDARD DETAILS FOR INTERSECTION



CITY OF YANKTON

CLARK CREEK  
MUNICIPAL AGENT

END PROJECT NO. NH 0081(69)2  
STA. 126+00 ON NH 0081(69)2 =  
264.63' SOUTH AND 1.39' WEST OF THE  
N.E. CORNER OF SECTION 35-9-56  
N.R.M. =

7-21-85  
J. S. Johnson

SURVEY BY: JOHNSON ENGINEERING CO.  
YANKTON, SOUTH DAKOTA  
PLANS BY: JOHNSON ENGINEERING CO.  
YANKTON, SOUTH DAKOTA

APPROVED: \_\_\_\_\_  
DATE: \_\_\_\_\_

U.S. DEPT. OF TRANSPORTATION  
FEDERAL HIGHWAY ADMIN.  
Approved: \_\_\_\_\_  
Date: \_\_\_\_\_

DESIGN CHECKED: \_\_\_\_\_

GROSS LENGTH LENGTH OF EXCEPTIONS NET LENGTH	FEET FEET FEET	1,961 NONE 1,961	MILES MILES MILES
LENGTH OF GRADING LENGTH OF BRIDGES	FEET FEET	1,961 NONE	MILES MILES

SCALES  
PLAN: 1" = 40' FEET  
PROFILE: 1" = 10' VERTICAL, 1" = 5' HORIZONTAL  
CROSS SECTIONS: 1" = 10' VERTICAL, 1" = 5' HORIZONTAL

LEGEND  
STATE AND NATIONAL LINE  
SECTION LINE  
QUARTER LINE  
BATTERY LINE  
SURVEY LINE  
RAIL LINE  
FILLING  
CITY LINES

DESIGN DESIGNATION  
NH 0081(69)2  
STA. 126+00 ON NH 0081(69)2 =  
264.63' SOUTH AND 1.39' WEST OF THE  
N.E. CORNER OF SECTION 35-9-56  
N.R.M. =

NH 0081(69)2 PCEMS NO. 3870 YANKTON COUNTY