



Department of Transportation

Division of Planning/Engineering

Right of Way Program

700 E Broadway Avenue

Pierre, South Dakota 57501-2586

605/773-3746 FAX: 605/773-5867

January 18, 2023

Mike Behm,
Director of Planning and Engineering
Department of Transportation
Pierre, South Dakota 57501

RE: January 26, 2023 Transportation Commission Agenda

Dear Mr. Behm:

The following items are recommended for Commission consideration:

1. Request Transportation Commission approval to abandon by resolution the following property acquired for highway right-of-way:

Lot A in Lot H2 in the SE1/4 of Section 29, Township 109 North, Range 76 West of the 5th P.M., Stanley County, South Dakota.

Said Lot A contains 1.18 acres.

Lot A in Lot H2 was acquired as a snow-fence but restricts access to adjacent Lower Brule Sioux Tribe property. DOT Pierre Area advises the above property is no longer needed for highway purposes and abandonment is recommended. (See attachment)

2. Request Transportation Commission approval to vacate by resolution the following plat:

Lot PE1 in Lot 13 of Outlot 5 in the S1/2 SW1/4 of Section 32, Township 39 North, Range 28 West of the 6th P.M. to Mission, Todd County, South Dakota, as recorded on November 10, 2016, in Book of Plats 3 on Page 165 in Todd County, South Dakota.

The Lot PE1 plat was created for Todd County Project NH 0018(176)206, PCN 039G drainage, but was later included within plat Lot H1 of Lot 13. The Winner Area DOT advises the plat is no longer necessary for future project construction and requests the plat be vacated. (See attachment)

3. Abandonment - Butte County

Request Transportation Commission approval to abandon by resolution the temporary easements on Butte County DOT Project NH-P 0042(74), PCN 06FF.

4. Abandonment - Hand County

Request Transportation Commission approval to abandon by resolution the temporary easements on I-land County DOT Project P 0026(03)250, PCN 04FK.

5. Abandonment-Lawrence County

Request Transportation Commission approval to abandon by resolution the temporary easements on Lawrence County DOT Project IM 0901(192)0, PCN 05MQ.

6. Abandonment - Meade County

Request Transportation Commission approval to abandon by resolution the temporary easements on Meade County DOT Project NH 0034(189)35, PCN 05TQ.

7. Abandonment- Union County

Request Transportation Commission approval to abandon by resolution the temporary easement on Union County DOT Project P 2029(02)6, PCN 00D1.

Sincerely,



Joel W. Gengler,
Program Manager

PLAT OF LOT A

Item # 1

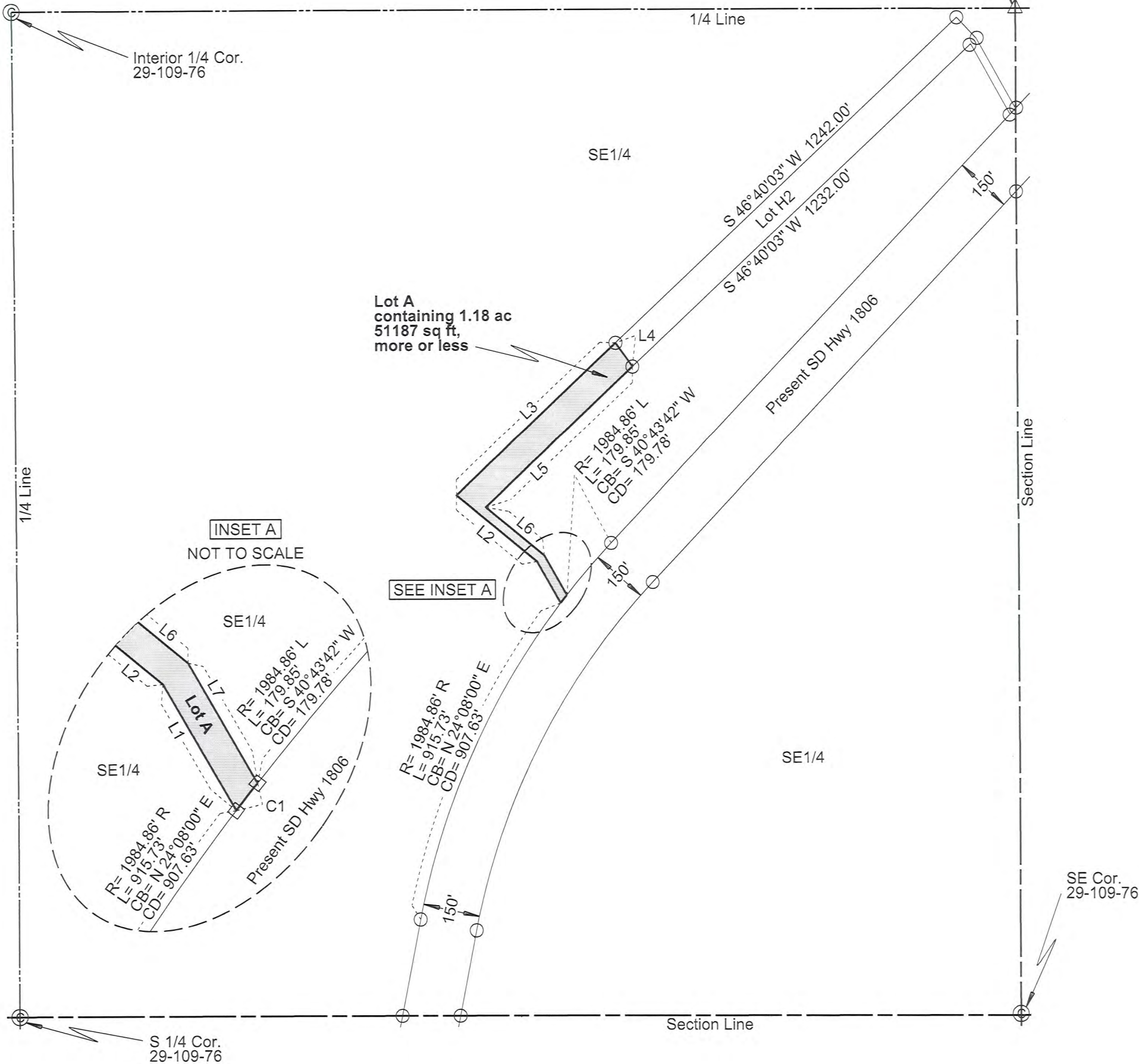
in Lot H2 in the SE1/4 of Section 29 - Township 109 North - Range 76 West of the 5th P.M.

STANLEY COUNTY, SOUTH DAKOTA
Showing a parcel of land for highway purposes to be abandoned
Scale: 1 inch = 300 feet

- LEGEND
- = existing right of way
 - = set R.O.W. corner
 - = set P.L.S.S. corner
 - = calculated corner
 - = set property corner

		Bearing		Length	Chord	Radius
C1	S	37° 44' 29"	W	27.10	27.10	1984.86L
L1	N	29° 32' 33"	W	126.00		
L2	N	50° 21' 53"	W	273.50		
L3	N	46° 40' 03"	E	578.00		
L4	S	35° 23' 22"	E	76.74		
L5	S	46° 40' 03"	W	532.83		
L6	S	50° 21' 53"	E	198.43		
L7	S	29° 32' 33"	E	120.13		

E 1/4 Cor.
29-109-76
N 686627.38
E 2060222.58



Note 1: The coordinates, bearings, distances and areas shown on this plat are based on the South Dakota State Plane Coordinate System Grid North - South Zone NAD 83(2011) epoch 2010.00 Geoid12A SF = 0.99988913

Note 2: All monumentation will be set upon project completion.

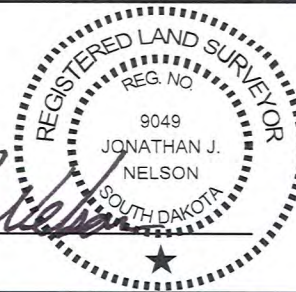
Drawn By Crystal L. Stonesifer Date 01/05/2023
Checked By Jon Nelson Date 01/05/2023

SURVEYOR'S CERTIFICATE

I, JONATHAN J. NELSON, Registered Land Surveyor, in and for the State of South Dakota, do hereby certify that as ordered by the South Dakota Department of Transportation the parcel of land as shown on this plat has been surveyed at my direction and under my control, and such parcel of land shall be hereafter known by the lot number designated herein. The location and dimensions of the parcel are shown on this plat.

In witness whereof, I have set my hand and seal this 5th day of January, A.D., 20 23.

Registered Land Surveyor
Registration No. 9049



OFFICE OF REGISTER OF DEEDS

State of South Dakota

County of _____ ss

Filed for record the _____ day of _____, A.D., 20 _____, at _____ M., and recorded in Books of Plats _____ on Page _____ therein.

Register of Deeds

by

Deputy

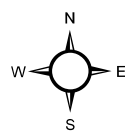
aban

Item # 1



109N, 76W
Section: 29

Lot A of Lot H2 - 1.18 Acres


1806



Legend

-  Section Line
-  Proposed Abandonment

0 0.05 0.1 0.2 Miles



Parcel 4

PLAT OF LOT PE1

Showing a permanent easement to be acquired for drainage in

Lot 13 of Outlot 5 in the S1/2 SW1/4 of Section 32 - Township 39 North - Range 28 West of the 6th P.M. to Mission

for construction of Project NH 0018(176)206
TODD COUNTY, SOUTH DAKOTA

Scale: 1 inch = 100 feet

LEGEND

- ▨ = existing right of way
● = found corner
(n) ● = found corner (not used)
○ = set corner
All monumentation will be set upon project completion

	Bearing	Length	Chord	Radius
L1	N 00° 14' 33" E	484.27		
C1	S 81° 08' 36" W	73.14	73.14	3769.72L
L2	S 11° 51' 18" E	38.22		
L3	S 80° 20' 20" W	30.02		
L4	N 11° 51' 18" W	38.23		
C2	N 80° 21' 34" E	30.02	30.02	3769.72R



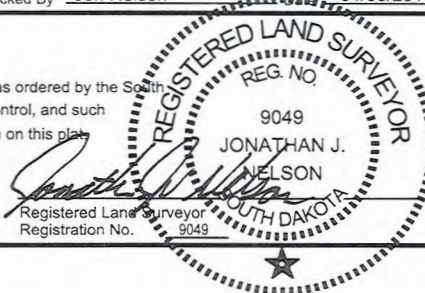
Note: The coordinates, distances and areas shown on this plat are based on the South Dakota State Plane coordinate System - South Zone NAD 83/07 epoch 2002.00 Geoid 09 SF = 0.99980275

Drawn By Kimberly L. Herrman Date 01/06/2016
Checked By Jon Nelson Date 01/06/2016

SURVEYOR'S CERTIFICATE

I, JONATHAN J. NELSON, Registered Land Surveyor, in and for the State of South Dakota, do hereby certify that as ordered by the South Dakota Department of Transportation the parcel of land as shown on this plat has been surveyed at my direction and under my control, and such parcel of land shall be hereafter known by the lot number designated herein. The location and dimensions of the parcel are shown on this plat.

In witness whereof, I have set my hand and seal this 17th day of May, A.D., 20 16.



33,045

State of South Dakota

County of TODD ss

Filed for record the 10th day of NOVEMBER, A.D., 20 16 at 8:00A M., and recorded in Books of Plats 3 on Page 165 therein.

OFFICE OF REGISTER OF DEEDS

Register of Deeds,

by

Deputy

039G