

Department of Transportation
Division of Planning/Engineering
Right of Way Program
700 E Broadway Avenue
Pierre, South Dakota 57501-2586
605/773-3746 FAX: 605/773-5867

November 16, 2020

Mike Behm,
Director of Planning and Engineering
Department of Transportation
Pierre, South Dakota 57501

RE: November 24, 2020 Transportation Commission Agenda

Dear Mr. Behm:

The following items are recommended for Commission consideration:

1. Transfer – Meade County

Request Transportation Commission approval by resolution to transfer by quit claim deed to Meade County the following highway right-of-way property interests:

A portion of Deer View Road and Spring valley Road, Meade County, South Dakota, legally described as follows:

Lot H3 in the E1/2 SE1/4 of Section 4, Township 3 North, Range 6 East of the B.H.M., less Lot A and the Dakota, Minnesota and Eastern Railroad Corporation right of way, Meade County, South Dakota. Said Lot H3 contains 0.13 acre, more or less.

Lot H2 in Tract A of Roth Subdivision in the NE1/4 NE1/4 of Section 9, Township 3 North, Range 6 East of the B.H.M., less that portion of said Tract A lying between railroad right of way and Lot H1 of the NE1/4 NE1/4, Meade County, South Dakota. Said Lot H2 contains 0.11 acre, more or less.

Lot H2 in the W1/2 SW1/4 of Section 3, Township 3 North, Range 6 East of the B.H.M., less Tract A, Meade County, South Dakota. Said Lot H2 contains 0.09 acre, more or less.

Lot H2 in Tract A of Roth Subdivision in the NW1/4 of Section 10, Township 3 North, Range 6 East of the B.H.M., excepting Lots 1 and 2 of Tract A of Roth Subdivision, Meade County, South Dakota. Lot H2 contains 2.43 acres, more or less.

Lot H2 in Tract B-1, Revised of Thurston Subdivision in the SW1/4 SE1/4 of Section 3, Township 3 North, Range 6 East of the B.H.M., Meade County, South Dakota. Lot H2 contains 0.10 acre, more or less.

Lot H2 in the N1/2 N1/2 NE1/4 of Section 10, Township 3 North, Range 6 East of the B.H.M., Meade County, South Dakota. Lot H2 contains 0.64 acre, more or less.

Lot H2 in the S1/2 N1/2 NE1/4 of Section 10, Township 3 North, Range 6 East of the B.H.M., Meade County, South Dakota. Lot H2 contains 0.46 acre, more or less.

Lot H2 in Lot B in the SW1/4 NE1/4 of Section 10, Township 3 North, Range 6 East of the B.H.M., Meade County, South Dakota. Lot H2 contains 0.49 acre, more or less.

Lot H2 in Lot A in the SW1/4 NE1/4 of Section 10, Township 3 North, Range 6 East of the B.H.M., Meade County, South Dakota. Lot H2 contains 0.08 acre, more or less.

Lot H2 in Lot 1 of Tract A of Roth Subdivision in the NW1/4 of Section 10, Township 3 North, Range 6 East of the B.H.M., Meade County, South Dakota. Lot H2 contains 1.35 acres, more or less.

Lot H2 in Lot 2 of Tract A of Roth Subdivision in the NW1/4 of Section 10, Township 3 North, Range 6 East of the B.H.M., Meade County, South Dakota. Lot H2 contains 0.31 acre, more or less.

Lot H2 in Lot 9A in the SE1/4 NW1/4 of Section 10, Township 3 North, Range 6 East of the B.H.M., Meade County, South Dakota. Lot H2 contains 0.42 acre, more or less.

Lot H2 in Lot 2 of McIntoch Subdivision in the NW1/4 of Section 10, Township 3 North, Range 6 East of the B.H.M., Meade County, South Dakota. Lot H2 contains 0.34 acre, more or less.

Lot H2 in Lot 1 of McIntoch Subdivision in the NW1/4 and NE1/4 SW1/4 of Section 10, Township 3 North, Range 6 East of the B.H.M., Meade County, South Dakota. Lot H2 contains 0.41 acre, more or less.

Lot H1 in Lot C of Debra Subdivision, a subdivision of Lot 1 of SW1/4 and Lots 1 and 2 of the SE1/4 of Section 10, Township 3 North, Range 6 East of the B.H.M., Meade County, South Dakota. Lot H1 contains 1.20 acres, more or less.

Lots H1 and H2 in the W1/2 NW1/4 NW1/4 SE1/4 of Section 10, Township 3 North, Range 6 East of the B.H.M., except Phelps Green Cemetery, Meade County, South Dakota. Lot H1 contains 0.08 acre, more or less. Lot H2 contains 0.27 acre, more or less.

Lot H1 in Lot D of the Debra Subdivision of Lot 1 in the SW1/4 and Lots 1 and 2 in the SE1/4 of Section 10, Township 3 North, Range 6 East of the B.H.M., Meade County, South Dakota. Lot H1 contains 3.21 acres, more or less.

Lots H1 and H2 in Lots F and G of Debra Subdivision, a subdivision of Lot 1 of the SW1/4 and Lots 1 and 2 of the SE1/4 of Section 10, Township 3 North, Range 6 East of the B.H.M., Meade County, South Dakota. Lot H1 in Lot F contains 1.02 acres, more or less. Lot H1 in Lot G contains 96 sq. ft, more or less. Lot H2 in Lot G contains 1.13 acres, more or less.

Rapid City DOT recommends disposal.

This resolution will complete the requirements of Exchange Agreement No. 715437. The highway right of way described above would be transferred to Meade County and Meade County would accept ownership, jurisdiction, operational and maintenance responsibilities of the above described right-of-way.

Rapid City Region and Area DOT recommends the transfer. (See attachments)

2. Abandonment – Codington County

This resolution will abandon the temporary easements on Codington County Project NH 0212(168)376, PCN 027Q.

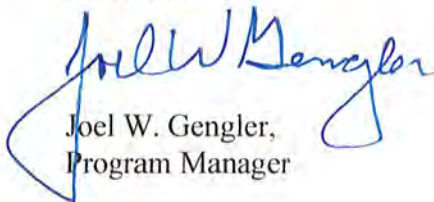
3. Abandonment – Pennington County

This resolution will abandon the temporary easements on Pennington County Project NH-PS 0044(00)44, PCN 04TG.

4. Abandonment – Pennington County

This resolution will abandon the temporary easements on Pennington County Project NH 0016(00)68, PCN 05JH.

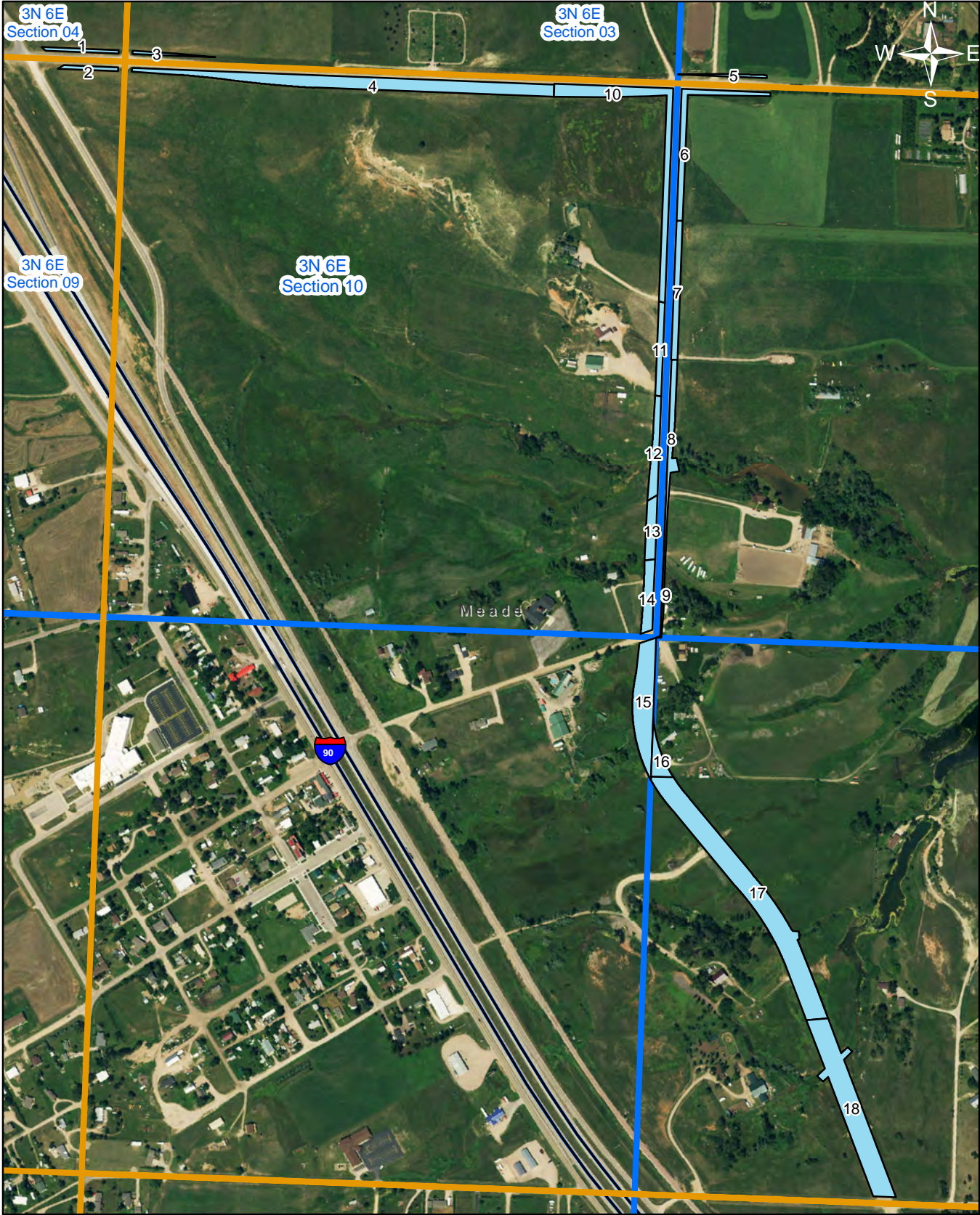
Sincerely,






Joel W. Gengler,
Program Manager

Deer View Rd and Spring Valley Rd Proposed Transfer

Item #1



Legend

-  Proposed Transfer
-  Section Line
-  1/4 Line

0 300 600 1,200 Feet