

June 17, 2020

Lease Holders & their Communication

Table of Contents

BRITTON LINE

	Lease #
1. Full Circle Ag (Ehren Grupe)	779, 1017, 1132, 1546, & 1547
2. North Star (Jerry Brick)	861
3. Britton Grain Terminal, LLC (Philip Deal)	942 & 943
4. Richard Wismer	933 & 1126
5. K Properties, LLC (Josh Kraft)	1592 & 1593
6. Doug Henley	1658
7. Tigh Fliehs	1617 & 1657
8. Kidder Grain Co, Inc. (Jeffrey Mills)	1548
9. Glenn Lehl	1022
10. City of Britton (Marie Marlow)	1667
11. City of Claremont (Charla Rye)	1659





YALE LINE

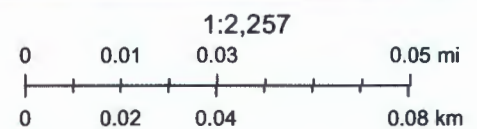
	Lease #
1. Agtegra Cooperative (Michael Traxinger)	1611
2. Dean Maas	1647
3. Jeff Tschetter	1638

1



5/8/2020, 11:23:21 AM

-  RAILROAD - MILE_POST
-  RAILROAD - Track_CL
-  RAILROAD - RAIL_PARCELS
-  RAILROAD - LEASED_SITES



Source: Esri, DigitalGlobe, GeoEye, Earthstar Geographics, CNES/Airbus DS, USDA, USGS, AeroGRID, IGN, and the GIS User Community



5/8/2020, 11:27:00 AM

- RAILROAD - Track_CL
- RAILROAD - RAIL_PARCELS
- RAILROAD - LEASED_SITES

1:2,257

0 0.01 0.03 0.05 mi

0 0.02 0.04 0.08 km

Source: Esri, DigitalGlobe, GeoEye, Earthstar Geographics, CNES/Airbus DS, USDA, USGS, AeroGRID, IGN, and the GIS User Community

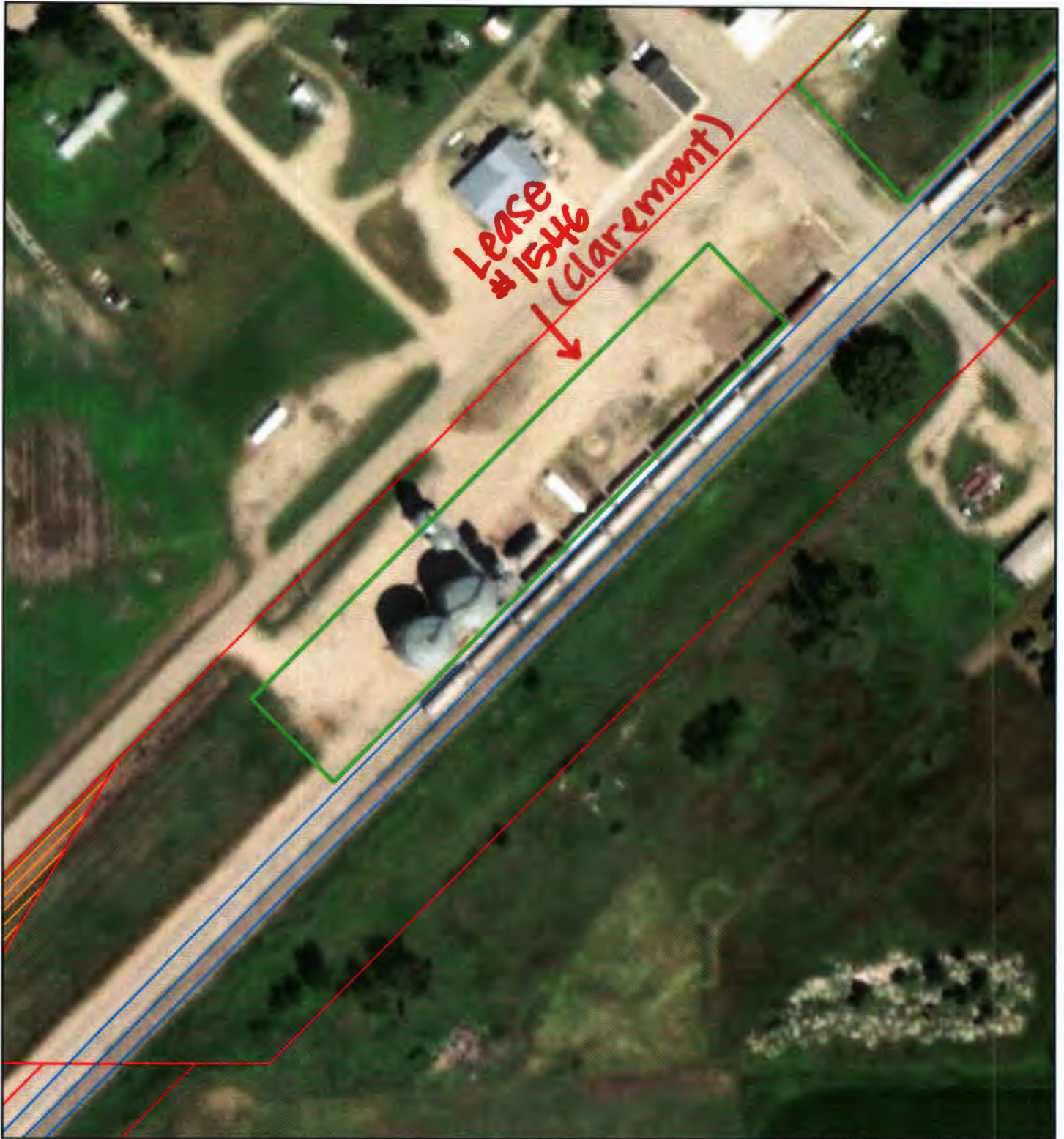


5/8/2020, 11:27:37 AM

- RAILROAD - Track_CL
- RAILROAD - RAIL_PARCELS
- RAILROAD - LEASED_SITES

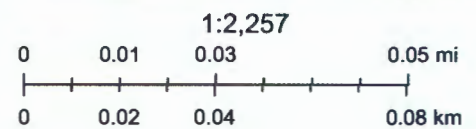


Source: Esri, DigitalGlobe, GeoEye, Earthstar Geographics, CNES/Airbus DS, USDA, USGS, AeroGRID, IGN, and the GIS User Community



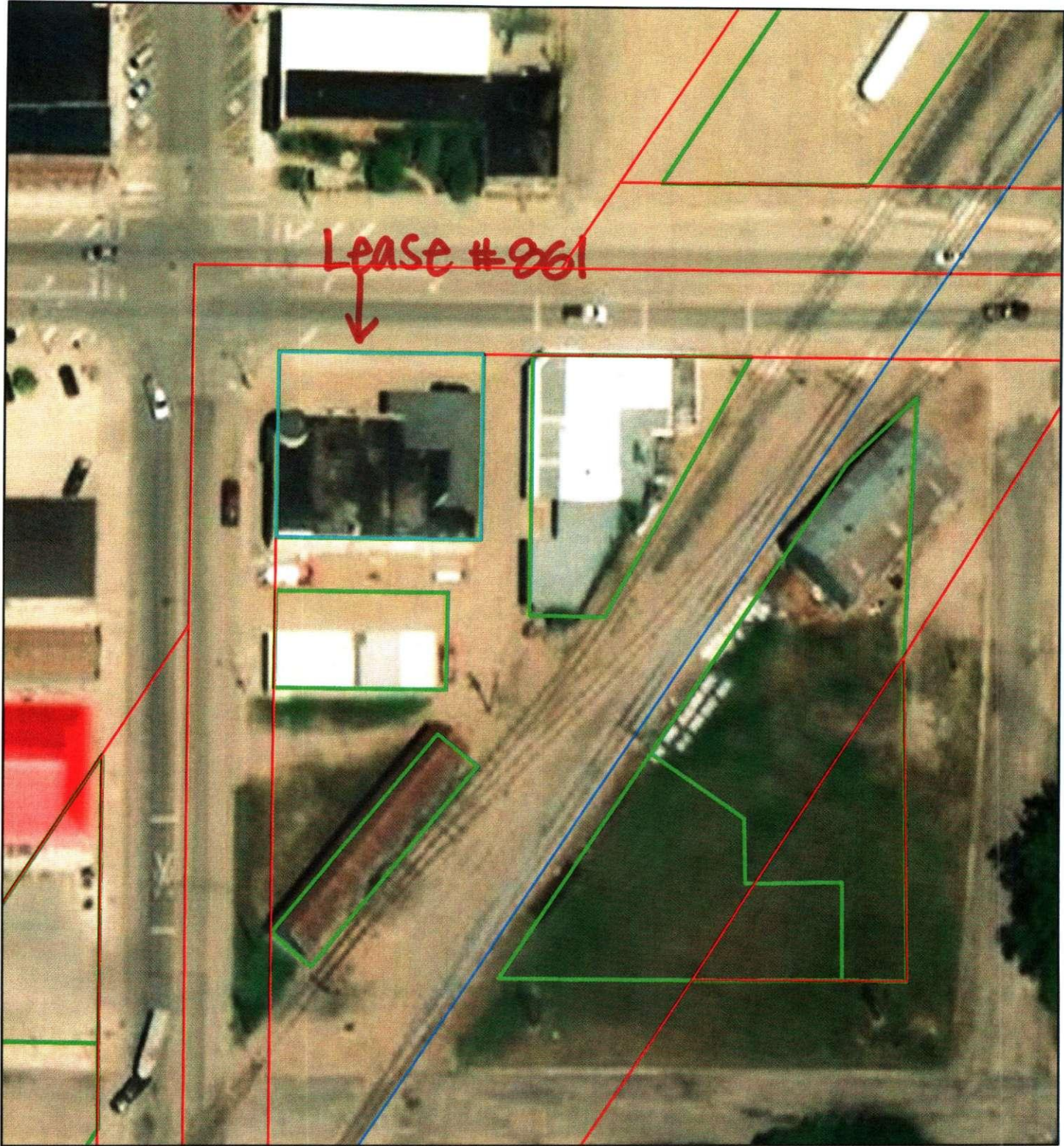
5/8/2020, 11:28:19 AM

- RAILROAD - Track_CL
- RAILROAD - RAIL_PARCELS
- RAILROAD - LEASED_SITES
- RAILROAD - RAIL_PARCELS_SOLD



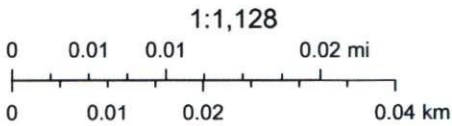
Source: Esri, DigitalGlobe, GeoEye, Earthstar Geographics, CNES/Airbus DS, USDA, USGS, AeroGRID, IGN, and the GIS User Community

2



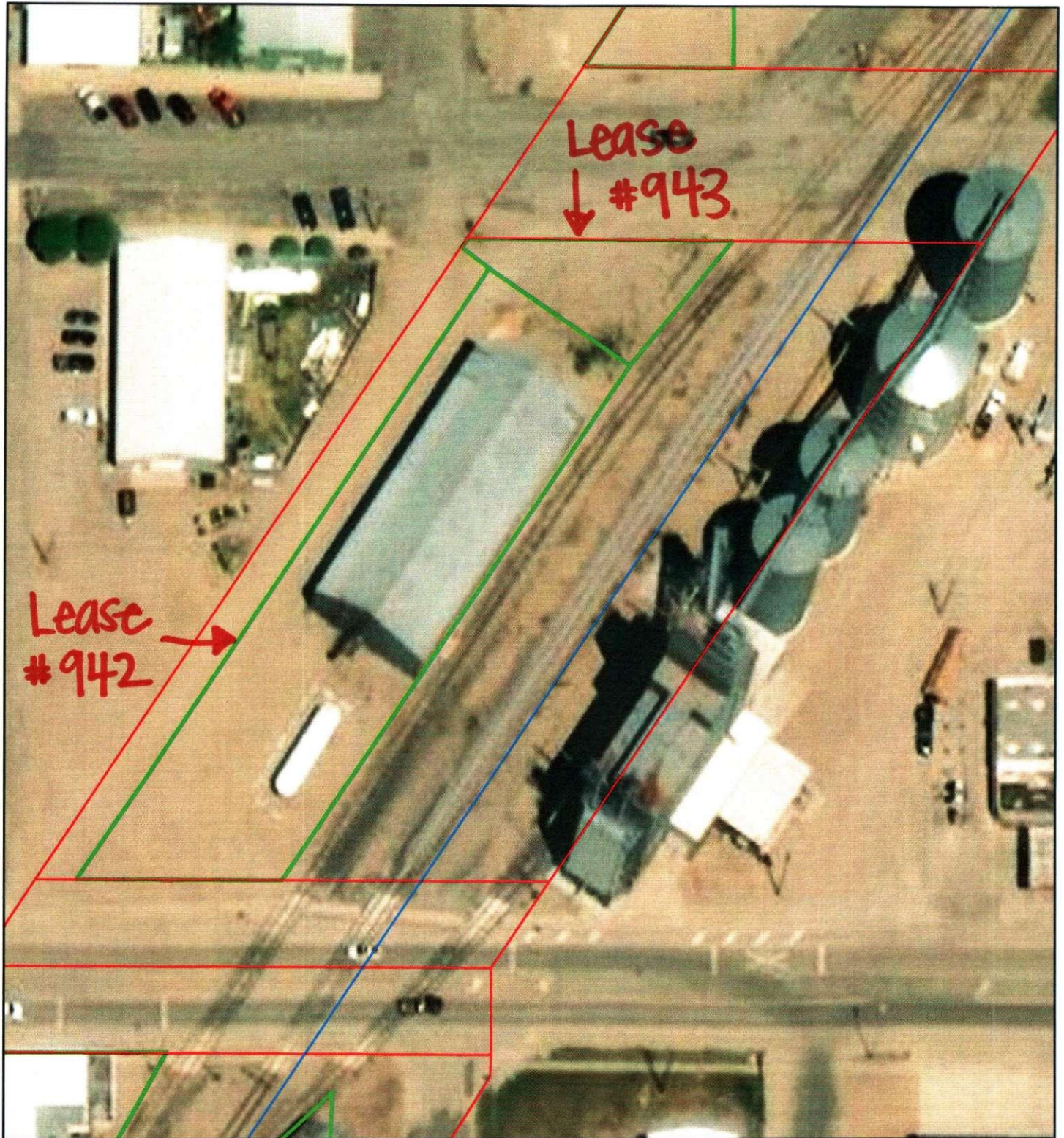
5/8/2020, 11:35:15 AM

- RAILROAD - Track_CL
- RAILROAD - RAIL_PARCELS
- RAILROAD - LEASED_SITES



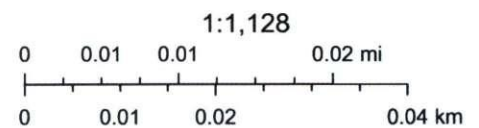
Source: Esri, DigitalGlobe, GeoEye, Earthstar Geographics, CNES/Airbus DS, USDA, USGS, AeroGRID, IGN, and the GIS User Community

3



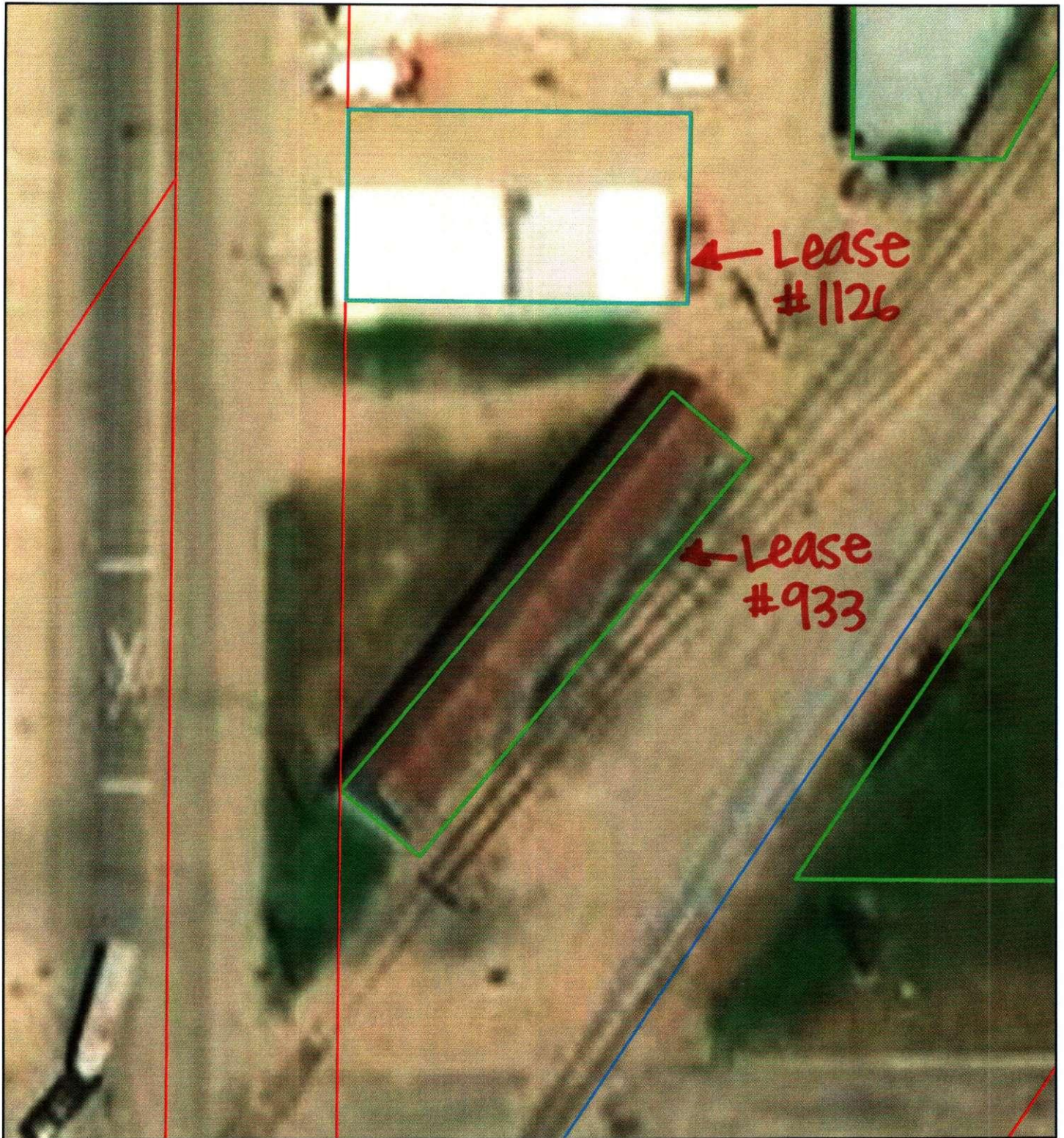
5/8/2020, 11:50:59 AM

- RAILROAD - Track_CL
- RAILROAD - RAIL_PARCELS
- RAILROAD - LEASED_SITES



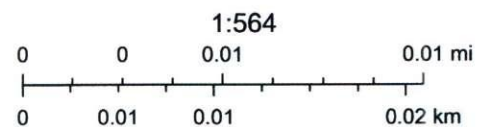
Source: Esri, DigitalGlobe, GeoEye, Earthstar Geographics, CNES/Airbus DS, USDA, USGS, AeroGRID, IGN, and the GIS User Community

4



5/8/2020, 12:00:31 PM

- RAILROAD - Track_CL
- RAILROAD - RAIL_PARCELS
- RAILROAD - LEASED_SITES



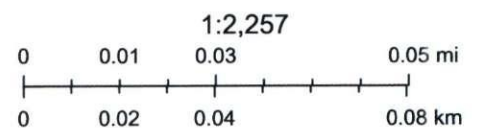
Source: Esri, DigitalGlobe, GeoEye, Earthstar Geographics, CNES/Airbus DS, USDA, USGS, AeroGRID, IGN, and the GIS User Community

5



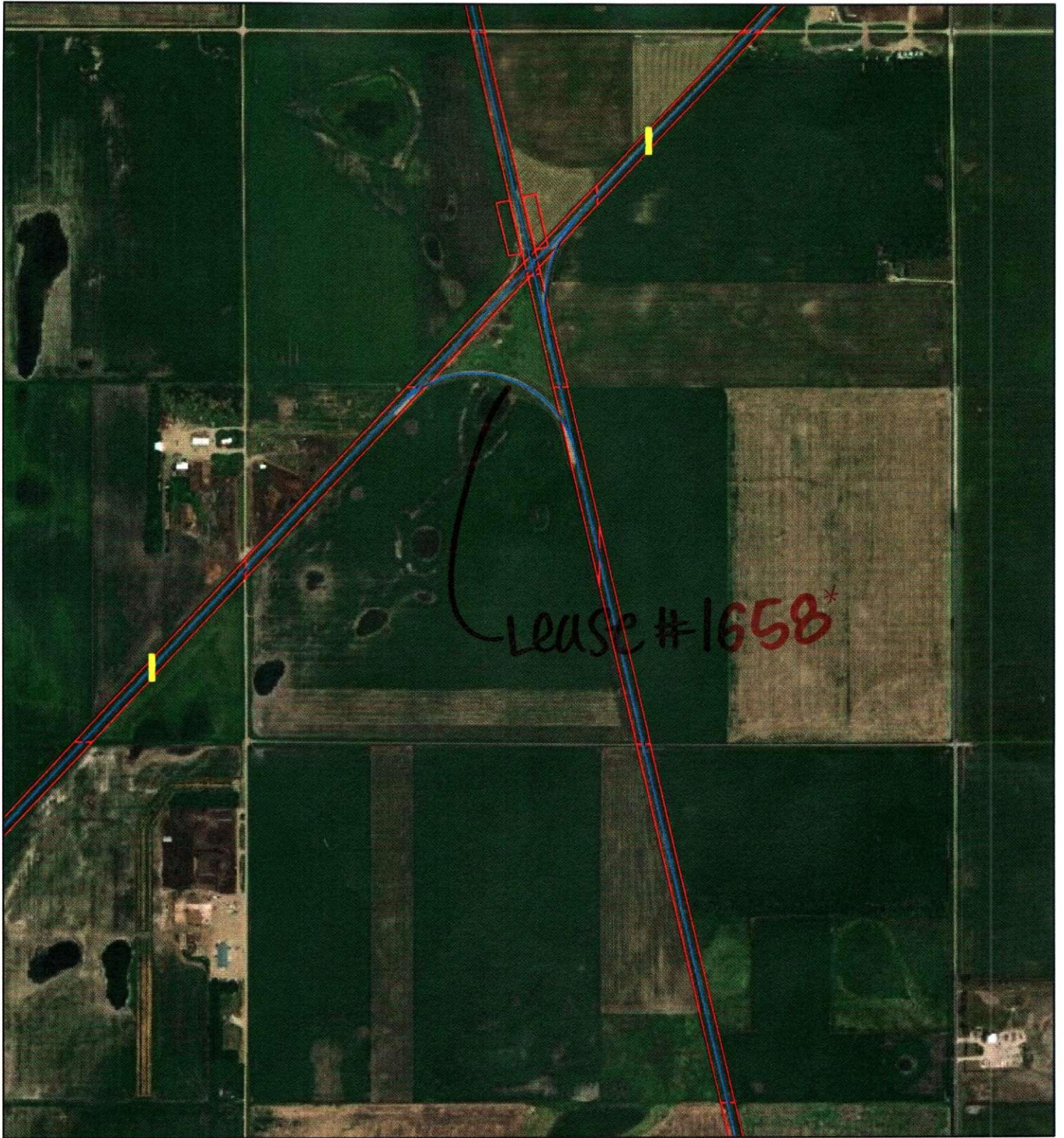
5/8/2020, 12:04:31 PM

- RAILROAD - Track_CL
- RAILROAD - RAIL_PARCELS
- RAILROAD - LEASED_SITES



Source: Esri, DigitalGlobe, GeoEye, Earthstar Geographics, CNES/Airbus DS, USDA, USGS, AeroGRID, IGN, and the GIS User Community

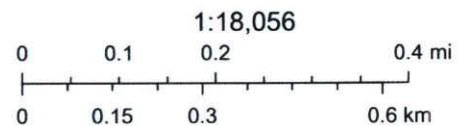
6



11/22/2019, 10:11:41 AM

-  RAILROAD - MILE_POST
-  RAILROAD - Track_CL
-  RAILROAD - RAIL_PARCELS

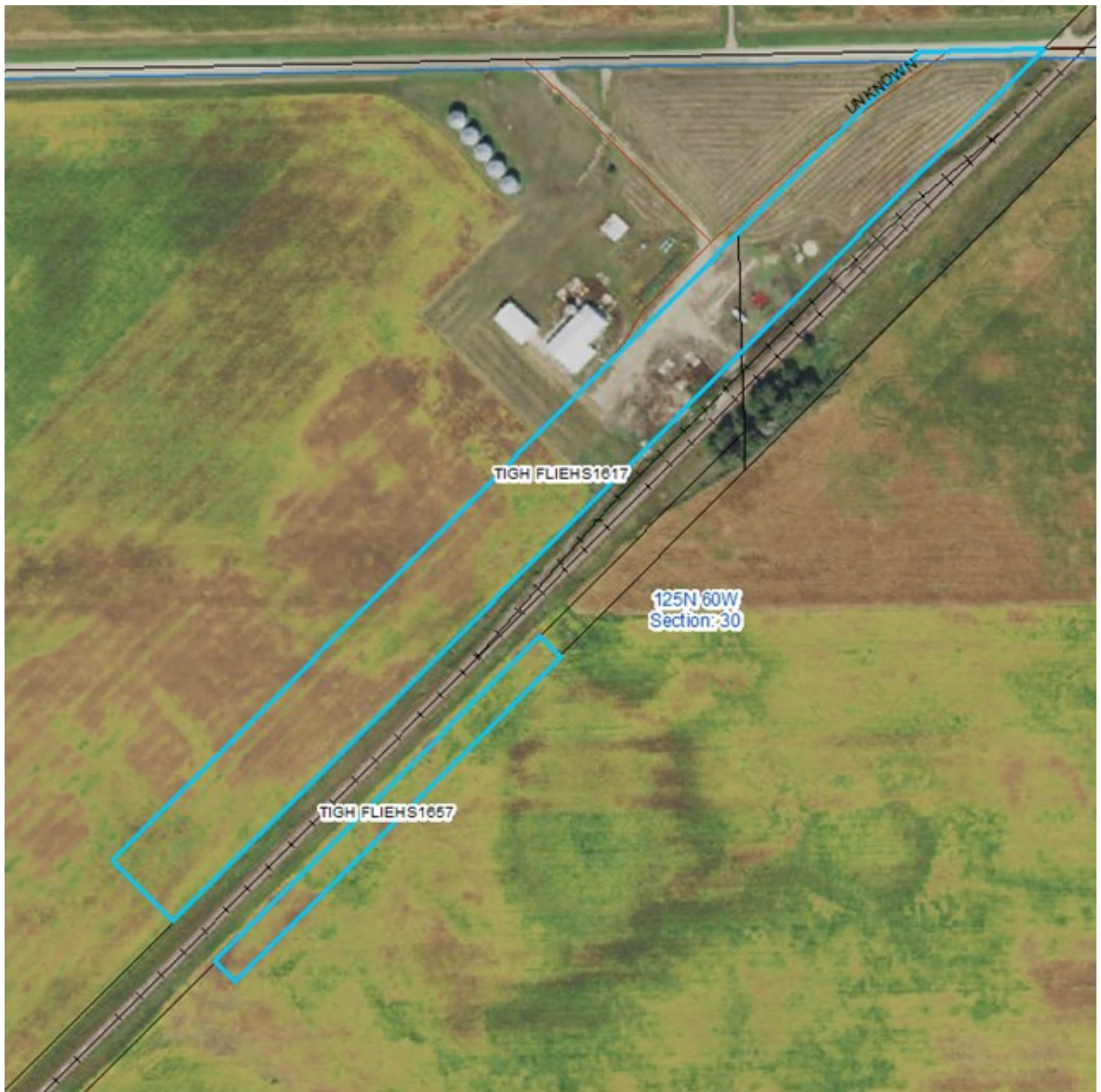
* Based on
Drawing from
Mr. Henley



Source: Esri, DigitalGlobe, GeoEye, Earthstar Geographics, CNES/Airbus DS, USDA, USGS, AeroGRID, IGN, and the GIS User Community

7

CORRECTION

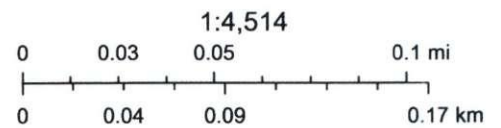


Britton Line #7



5/8/2020, 12:13:51 PM

- RAILROAD - Track_CL
- RAILROAD - RAIL_PARCELS
- RAILROAD - LEASED_SITES



Source: Esri, DigitalGlobe, GeoEye, Earthstar Geographics, CNES/Airbus DS, USDA, USGS, AeroGRID, IGN, and the GIS User Community

8

CORRECTION

Exhibit B

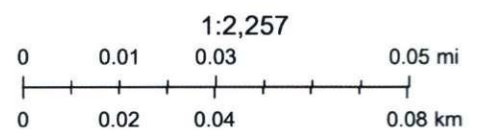


Britton Line #8



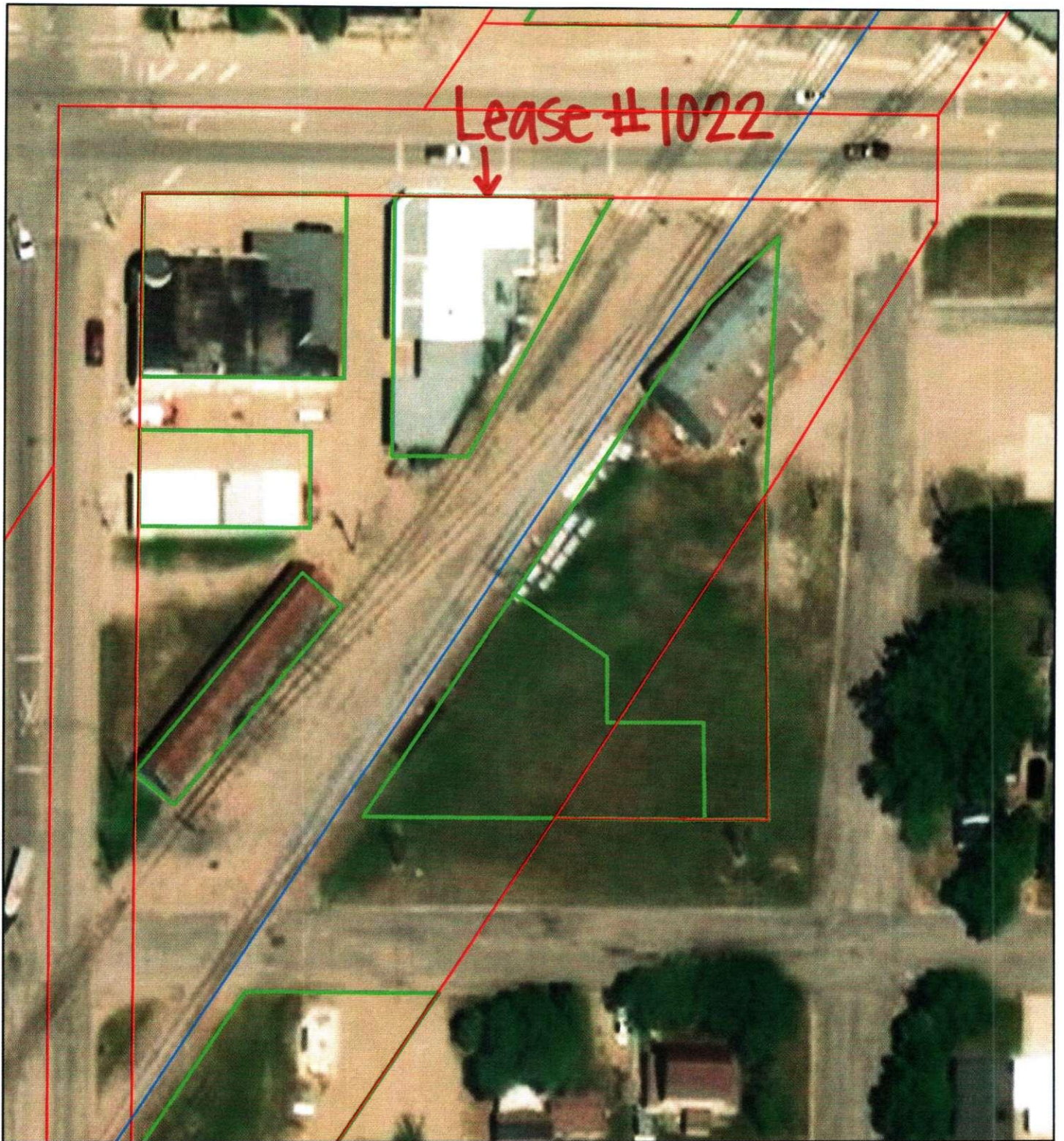
5/8/2020, 12:18:13 PM

- RAILROAD - Track_CL
- RAILROAD - RAIL_PARCELS
- RAILROAD - LEASED_SITES



Source: Esri, DigitalGlobe, GeoEye, Earthstar Geographics, CNES/Airbus DS, USDA, USGS, AeroGRID, IGN, and the GIS User Community

9



6/1/2020, 9:13:38 AM

- RAILROAD - Track_CL
- RAILROAD - RAIL_PARCELS
- RAILROAD - LEASED_SITES

1:1,128

0 0.01 0.01 0.02 mi

0 0.01 0.02 0.04 km

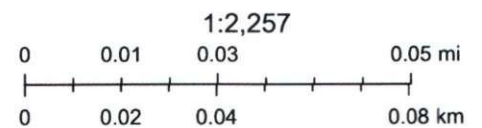
Source: Esri, DigitalGlobe, GeoEye, Earthstar Geographics, CNES/Airbus DS, USDA, USGS, AeroGRID, IGN, and the GIS User Community

10



6/1/2020, 9:34:58 AM

- RAILROAD - Track_CL
- RAILROAD - RAIL_PARCELS
- RAILROAD - LEASED_SITES



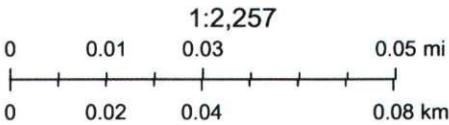
Source: Esri, DigitalGlobe, GeoEye, Earthstar Geographics, CNES/Airbus DS, USDA, USGS, AeroGRID, IGN, and the GIS User Community

11



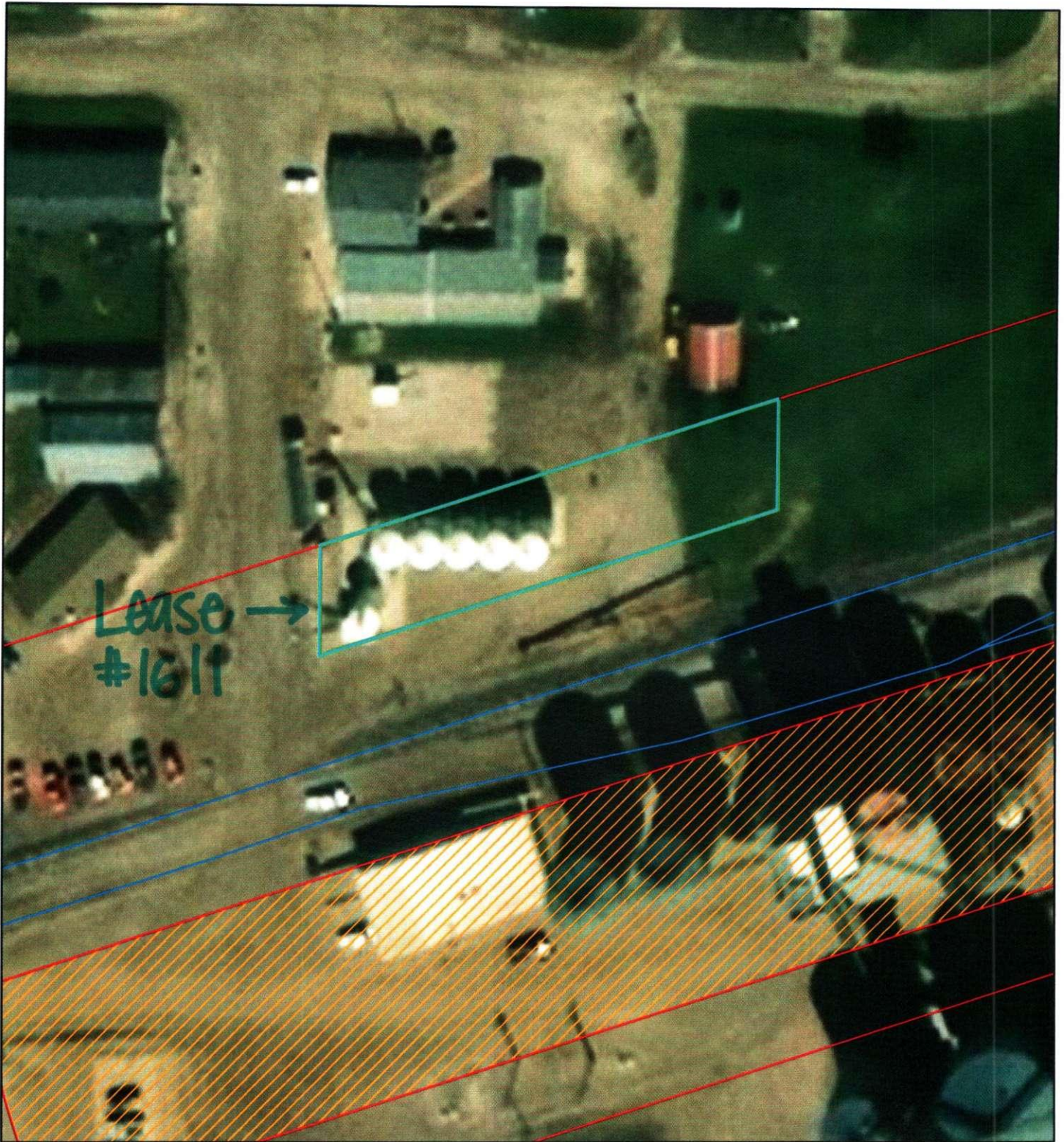
6/1/2020, 9:10:25 AM

- RAILROAD - Track_CL
- RAILROAD - RAIL_PARCELS
- RAILROAD - LEASED_SITES



Source: Esri, DigitalGlobe, GeoEye, Earthstar Geographics, CNES/Airbus DS, USDA, USGS, AeroGRID, IGN, and the GIS User Community

1



5/26/2020, 10:53:36 AM

- RAILROAD - Track_CL
- RAILROAD - RAIL_PARCELS
- RAILROAD - LEASED_SITES
- ▨ RAILROAD - RAIL_PARCELS_SOLD

1:1,128

0 0.01 0.01 0.02 mi

0 0.01 0.02 0.04 km

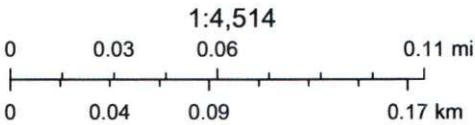
Source: Esri, DigitalGlobe, GeoEye, Earthstar Geographics, CNES/Airbus DS, USDA, USGS, AeroGRID, IGN, and the GIS User Community

2



5/26/2020, 10:52:15 AM

- RAILROAD - MILE_POST
- RAILROAD - Track_CL
- RAILROAD - RAIL_PARCELS
- RAILROAD - LEASED_SITES



Source: Esri, DigitalGlobe, GeoEye, Earthstar Geographics, CNES/Airbus DS, USDA, USGS, AeroGRID, IGN, and the GIS User Community

This map is intended for general planning purposes only. This map may or may not accurately represent the actual conditions as they exist today. Any decisions made using this map should be field

3



5/26/2020, 10:55:15 AM

■ RAILROAD - MILE_POST — RAILROAD - Track_CL
□ RAILROAD - LEASED_SITES

1:18,056
 0 0.1 0.2 0.4 mi
 0 0.17 0.35 0.7 km

Source: Esri, DigitalGlobe, GeoEye, Earthstar Geographics, CNES/Airbus