



Division of Finance & Management

Office of Air, Rail & Transit

700 East Broadway Avenue

Pierre, SD 57501

O: 605.773-3574 | F: 605.773.2804

dot.sd.gov

TO: South Dakota Aeronautics Commission

FROM: Jack Dokken, Office of Aeronautics

DATE: July 21, 2022

SUBJECT: AIP and BIL Grant Applications

Airport sponsors are requesting funding from the State Aeronautics Fund for the following AIP and BIL projects.

Highmore 3-46-0046-012-2022

Design construction of apron expansion (approx.. 2500 Yd²) and reconstruction, seal coat and remark pavements, 3600'x60' runway, 3600'x35' taxiway and connectors.

Federal Share	\$ 49,410.00
State Share	\$ 2,745.00
Local Share	\$ 2,745.00
Total	\$ 54,900.00

Hoven 3-46-0021-015-2022

Design lighting improvements including replacement of MIRL, PAPIs, beacon, wind cone and archeological survey.

Federal Share	\$ 67,500.00
State Share	\$ 3,750.00
Local Share	\$ 3,750.00
Total	\$ 75,000.00

Mobridge 3-46-0038-018-2022

AIP – Design, construct administration/construction, observation, FAA closeout, construction for jet A fuel system including fuel tank, credit card reader and dispenser.

Federal Share	\$ 685,000.00
State Share	\$ 0
Local Share	\$ 77,435.87
Total	\$ 762,435.87

Mobridge 3-46-0038-019-2022

BIL – Design, construct administration/construction, observation, FAA closeout, construction for jet A fuel system including fuel tank, credit card reader and dispenser.

Federal Share	\$ 123,807.72
State Share	\$ 0
Local Share	\$ 13,756.41
Total	\$ 137,564.13

Onida 3-46-0041-016-2022

Construct runway 13/31 and reconstruct turnaround on 13's end.

Federal Share	\$ 3,321,000.00
State Share	\$ 184,500.00
Local Share	\$ 184,500.00
Total	\$ 3,690,000.00

Pierre 3-46-0044-048-2022

Rehabilitate runway 7/25, install HIRL, electrical homerun replacement. Includes flight check and cultural monitoring.

Federal Share	\$ 7,130,700.00
State Share	\$ 187,650.00
Local Share	\$ 187,650.00
Total	\$ 7,506,000.00

PART IV – PROGRAM NARRATIVE
(Suggested Format)

PROJECT: Construct apron expansion and reconstruction, sealcoat and remark airfield pavements – Design Only

AIRPORT: Highmore Municipal

1. **Objective:** All airfield pavements were crack sealed until the 2021 Statewide Pavement Maintenance Project. They are also in need of seal coat and remarking, which are proposed to be part of the 2022 Statewide Pavement Maintenance Project.

The Apron at Highmore is undersized and failing. The PCI during the last pavement inspection was 47, pavements were inspected again in 2021, the PCI is expected to continue to go down drastically with the next PCI report. Additionally, the apron is not adequately sized for existing users and it allows for direct access to the runway. The proposed project would reconstruct and expand the apron, eliminate the direct access, and improve operational safety by increasing separation between any parked and moving aircraft.

2. **Benefits Anticipated:** The project will preserve existing pavements by applying a seal coat. The apron reconstruction and expansion will increase safety and functionality of the apron, additionally removing direct access will fix a deficiency that is a priority at NPIAS airports.

2. **Approach:** (See approved Scope of Work in Final Application)

Apron reconstruction and expansion and the sealcoat/remarking projects will be completed through traditional construction contract, it is anticipated they will be bid separately but funded through the same grant. HDR Engineering of Sioux Falls, SD will serve as the airport's consultant to lead this effort. The design for both projects will be completed with this grant. It is anticipated the projects will be bid in Feb/March 2023 to meet FY 23 grant application deadlines. Construction is expected in the Summer of 2023 with completion by November 2023.

4. **Geographic Location:** Highmore, Hyde County, South Dakota approximately 1 mile north of the city center on SD Hwy 47.

5. **If Applicable, Provide Additional Information:**

6. **Sponsor's Representative:** (include address & telephone number)

Vikki Day, Mayor
605.852.2716

Highmore Municipal Airport

Apron Reconstruct and Expansion

Airport Driveway and SD 47 as Haul Route

Storage and Stockpile location

Apron work limits

Site Access, excess excavation to be property of contractor

Sealcoat and Remark all work will be on airfield pavements



PART IV – PROGRAM NARRATIVE
(Suggested Format)

PROJECT: AIP #3-46-0021-015-2022
AIRPORT: Hoven Municipal Airport
1. Objective: Design Lighting System Improvements including Replacement of MIRL, PAPIs, Beacon, and Windcone and Archaeological Survey This project proposes to replace all lights on Runway 13/31 at 30 inches in height with LED units, replace the PAPI on Runway 31 with LED units, add a PAPI on Runway 13 with LED units, and replace the beacon and windcone.
2. Benefits Anticipated: Runway 13/31 has Medium Intensity Runway Lighting (MIRL) system consisting of incandescent fixtures installed in 2006. Every third light has a concrete base while the remaining lights are stake mounted. Runway 31 has a 2-box PAPI with incandescent fixtures. LED consumes 60% to 70% less energy and life expectancy is significantly longer, resulting in long term savings on parts.
3. Approach: (See approved Scope of Work in Final Application) Helms & Associates of Aberdeen, SD will serve as the airport's consultant to complete design of the project. Helms will perform a topographic survey, complete necessary environmental documentation, assist with the performance of an archaeological survey, and prepare a preliminary estimate of probable construction costs. An Engineer's Design Report and Construction Safety Phasing Plan will be submitted in September, 2022. 90% plans and specifications shall be submitted by October of 2022. Upon FAA approval, the project will be shelf ready for construction in 2023.
4. Geographic Location: Hoven Municipal Airport Potter County South Dakota
5. If Applicable, Provide Additional Information:
6. Sponsor's Representative: (include address & telephone number) Norman Stethem, Mayor PO Box 157 Hoven, SD 57450-0157

HOVEN MUNICIPAL AIRPORT - PROJECT SKETCH



PART IV – PROGRAM NARRATIVE
(Suggested Format)

PROJECT: Install New Jet A Fuel System

AIRPORT: Mobridge Municipal Airport

1. Objective:

This project will design and construct a new Jet A fuel system at the airport. The existing airport Jet A fuel truck is not available 24/7 as medical emergencies arise. The existing fuel truck has also developed a leak and has outlived its useful life. This project will replace the old truck with a new self-service Jet A fuel system so that all pilots have access to fuel whenever needed.

2. Benefits Anticipated:

Increased availability for Jet A fuel for medical flights and all aircraft using the airport. The existing fuel truck leaks and is not available to pilots 24/7. This new system will address the fuel availability issues.

3. Approach: (See approved Scope of Work in Final Application)

The project was developed in a standard design, bid, and build method. The design has been completed and the project has been bid. The next step is for the grant to be issued and construction to take place. There will be an additional BIL/AIG grant to cover the non-construction related project costs. Construction is anticipated to take place during the summer and fall of 2022.

4. Geographic Location:

City of Mobridge, Walworth County, State of South Dakota

5. If Applicable, Provide Additional Information:

None

6. Sponsor's Representative: (include address & telephone number)

Ms. Heather Beck - City Administrator
114 1st. Avenue E.
Mobridge, SD 57601-2604 Ph: 605-845-3509 Email: cityhall@westriv.com



MOBRIDGE MUNICIPAL AIRPORT
CITY OF MOBRIDGE (OWNER)
MOBRIDGE, SOUTH DAKOTA

PROJECT WORK DESCRIPTION

DRAFTED
KNV
REVIEWED
CJB
PROJECT NUMBER
2105-01709
LAST REVISED DATE
2/28/2022
SHEET
5

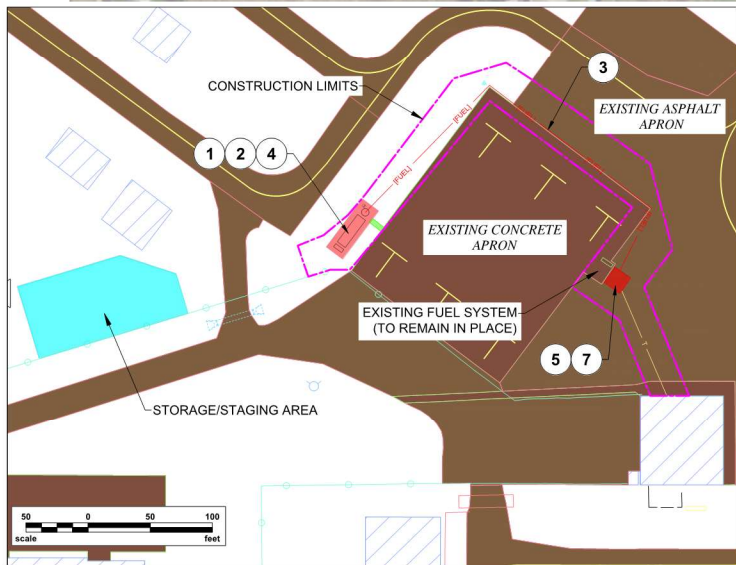
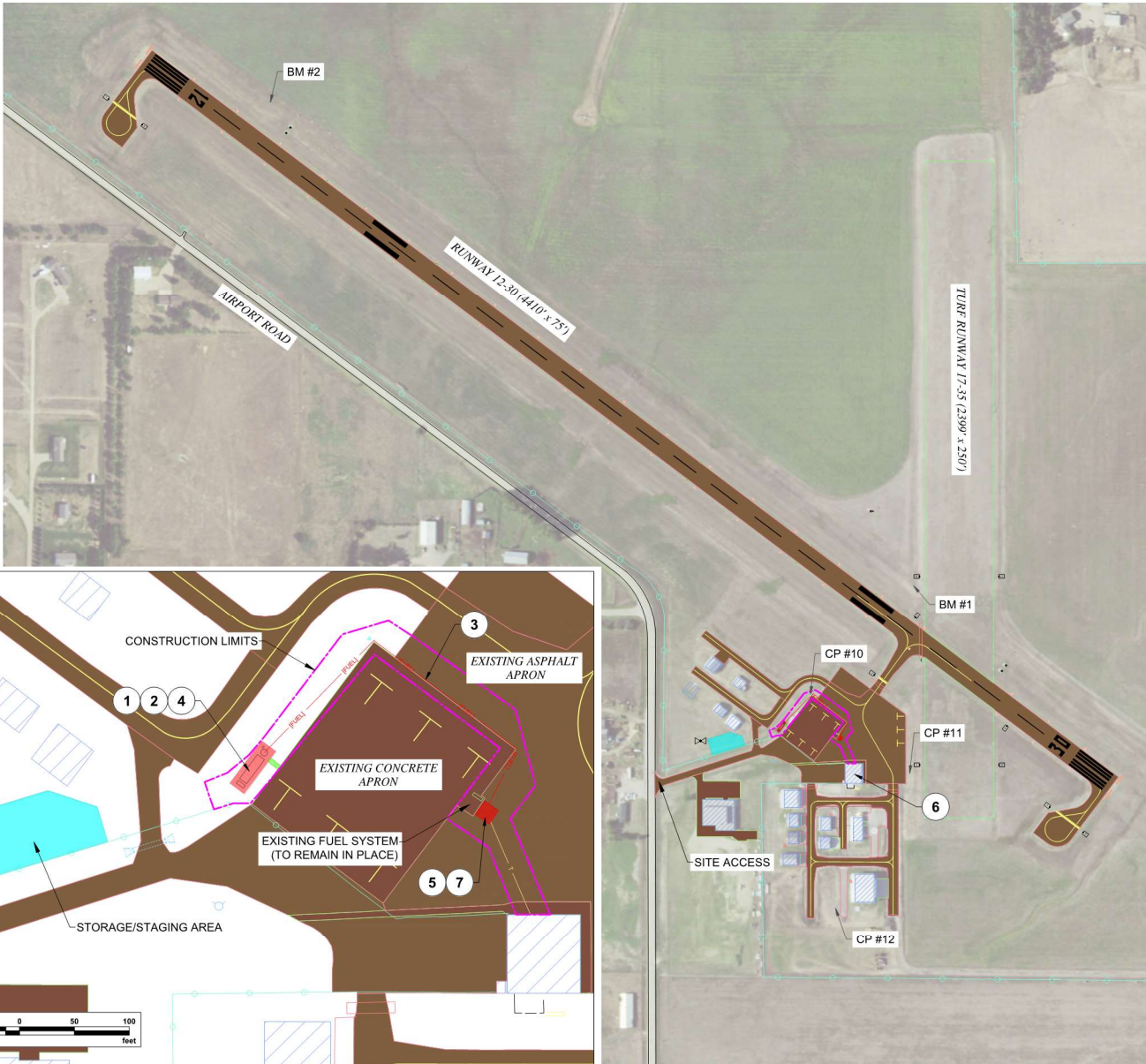
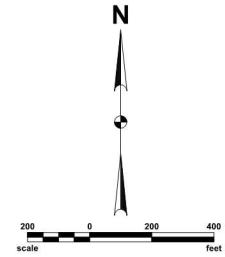
© KLJ 2022

PROJECT WORK DESCRIPTION

- 1 CONSTRUCT NEW CONCRETE SLAB FOR FUEL TANK (APPROX = 16' x 48')
- 2 INSTALL NEW 10,000 GALLON JET A ABOVEGROUND STORAGE TANK (AST)
- 3 INSTALL NEW UNDERGROUND FUEL SUPPLY PIPING
- 4 INSTALL NEW REMOTE FILL CONTAINER AND UNDERGROUND PIPING
- 5 INSTALL NEW CARD READER, FUEL MANAGEMENT SYSTEM (FMS), AND FUEL DISPENSING CABINET
- 6 INSTALL NEW REMOTE MONITORING EQUIPMENT
- 7 INSTALL NEW SITE LIGHTING

BENCHMARK AND CONTROL POINT LIST			
NO.	DESCRIPTION	LOCATION	ELEVATION
BM1	METAL ROD IN SLEEVE	N624.263.490 E1.865.024.850	1699.72'
BM2	METAL ROD IN SLEEVE	N626.023.150 E1.862.680.230	1700.45'
CP10	CAPPED REBAR	N623.862.554 E1.864.650.587	1692.68'
CP11	CAPPED REBAR	N623.573.886 E1.865.012.002	1692.64'
CP12	CAPPED REBAR	N623.085.762 E1.864.741.212	1682.94'

NOTE: CONTRACTOR SHALL VERIFY CONTROL POINTS IN THE FIELD PRIOR TO CONSTRUCTION.



PART IV – PROGRAM NARRATIVE
(Suggested Format)

PROJECT: AIP # 3-46-0041-016-2022

AIRPORT: Onida Municipal Airport

1. Objective:

Construction of Runway 13/31 ($\pm 3,800'$ x $60'$) reconstruction and turnaround construction on the 13 end.

2. Benefits Anticipated:

Results from the 2021 PCI surveys presented a valued of 58 for the majority of the runway and 69 for extension of the runway from 2007. The minimum PCI requirement for runways is 60. Reconstruction of the runway with geotextile separator fabric and improved asphalt oil will extend the life of the pavement and enhance safety of the airport. By constructing a turnaround on the 13 end, aircraft would have the ability to exit the runway quickly, allowing emergency aircraft to land immediately and safely.

3. Approach: (See approved Scope of Work in Final Application)

The runway reconstruction and turnaround construction will be completed through a traditional construction contract. Helms and Associates of Aberdeen, SD will serve as the airport's consultant to lead this effort.

4. Geographic Location:

Onida Municipal Airport
Onida, Sully County, South Dakota

5. If Applicable, Provide Additional Information:

6. Sponsor's Representative: (include address & telephone number)

LaJena Gruis, Mayor 605-258-2441
PO Box 72
Onida, SD 57564-0072

PART IV – PROGRAM NARRATIVE
(Suggested Format)

PROJECT: Rehabilitate Runway 7-25 and Narrow to 100 Feet - Construction and CA/CO Services

AIRPORT: Pierre Regional Airport

1. Objective:

The 2015 Pavement Condition Index for Runway 7-25 was 70 and Taxiway C was 61 with both pavements significantly deteriorating during the past couple of years. Both pavements were constructed in 1998. This project would rehabilitate Runway 7-25 by milling a portion of the existing hot mix asphalt pavement and then placing a structural overlay on the runway and transition the new surface to the Taxiway C connection. Runway 7-25 would be narrowed from 150 feet to 100 feet. Reconstruction would also include the replacement of the Runway 7-25 lighting and signage system.

2. Benefits Anticipated:

Increased aircraft ground movement safety and removal of excess runway pavement reducing airfield maintenance needs. New runway light would also be provided to match the narrowed runway width.

3. Approach: (See approved Scope of Work in Final Application)

This is a single phase project utilizing the traditional design, bid, and build model. Runway and taxiway plans and specifications have been developed during the spring / summer of 2021 with a construction bid letting in the summer of 2022. Construction would be anticipated to be completed in the spring / summer / fall of 2023.

4. Geographic Location:

Pierre Regional Airport
City of Pierre
Hughes County
South Dakota

5. If Applicable, Provide Additional Information:

6. Sponsor's Representative: (include address & telephone number)

Mr. Cameron Howard - Airport Manager - Pierre Regional Airport
3800 Airport Road, Suite #209
Pierre, SD 57501 Telephone: (605) 773-7447

NOTE: THIS SHEET IS TO BE PRINTED IN COLOR.



PROJECT WORK DESCRIPTION

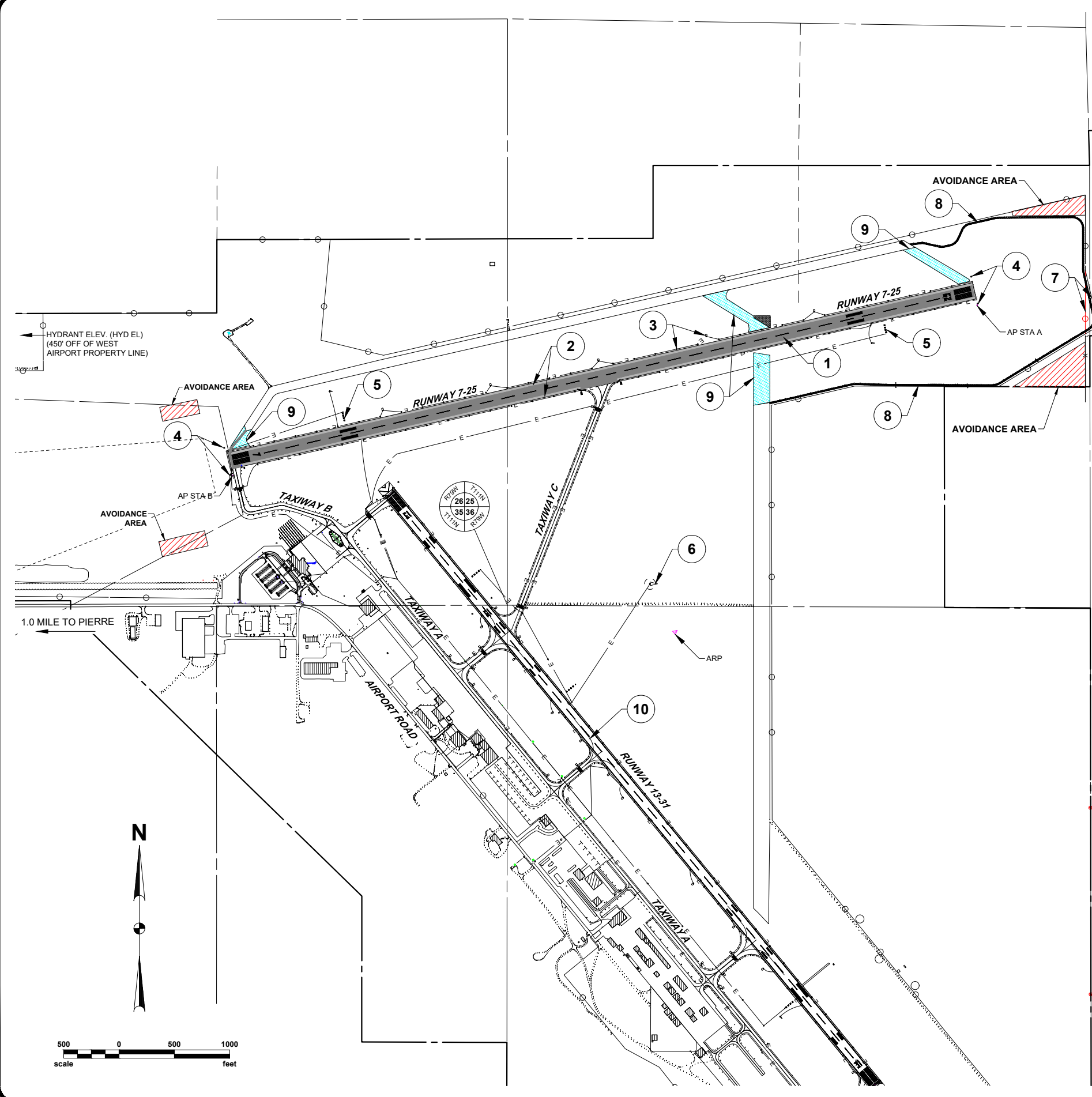
- 1 MILL & OVERLAY RUNWAY 7-25 (6,880'x100' APPROX.)
- 2 FULL DEPTH ASPHALT REMOVAL OF OUTSIDE 25 FT ON EACH EDGE OF RUNWAY TO REDUCE RUNWAY 7-25 WIDTH FROM 150' TO 100'
- 3 REMOVE & REPLACE RUNWAY 7-25 HIGH INTENSITY RUNWAY LIGHTING (HIRL) SYSTEM, SIGNAGE, AND ASSOCIATED CABLING.
- 4 REMOVE & REPLACE RUNWAY 7-25 RUNWAY END IDENTIFIER LIGHTS (REILs)
- 5 REMOVE & REPLACE RUNWAY 7-25 PRECISION APPROACH PATH INDICATORS (PAPIs)
- 6 REMOVE & REPLACE PRIMARY WINDCONE AND SEGMENTED CIRCLE MARKERS
- 7 REMOVE EXISTING AIRPORT CHAIN LINK FENCE (574' APPROX) & INSTALL AIRPORT CHAIN LINK FENCE OUTSIDE OF RUNWAY 7-25 OBJECT FREE AREA (653' APPROX)
- 8 INSTALL AND GRADE ASPHALT MILLINGS FOR EXTENSION OF PERIMETER ROAD (5,716' X 12' APPROX.)
- 9 REMOVE ABANDONED PARALLEL TAXIWAY CONNECTORS AND A PORTION OF THE ABANDONED RUNWAY PAVEMENT.
- 10 VARIOUS MILL & OVERLAY REPAIR LOCATIONS ON RUNWAY 13-31. SEE PLAN SHEET 21 FOR DETAILS.

BENCH MARK LIST			
LABEL	DESCRIPTION	LOCATION	ELEVATION
AP STA B	SET IN TOP OF CONCRETE MONUMENT RUNWAY 7-25	N747,940.50 E1,977,406.00 STA.9+86.41, 135.06' RT.	1740.31'
ARP	SET IN TOP OF CONCRETE MONUMENT RUNWAY 7-25	N746,525.50 E1,981,404.00 STA.45+68.87, 2404.84' RT.	1716.66'
HYD EL	SET IN CONCRETE SLAB ON A WATER RESERVOIR	N747,912.00 E1,974,237.00 OFF AIRPORT PROPERTY	1821.90'
AP STA A	SET IN TOP OF CONCRETE MONUMENT RUNWAY 7-25	N749478.30 E1,984,132.00 STA.78+85.97, 133.87' RT.	1699.84'

NOTE: CONTRACTOR SHALL VERIFY CONTROL POINTS IN THE FIELD PRIOR TO CONSTRUCTION.

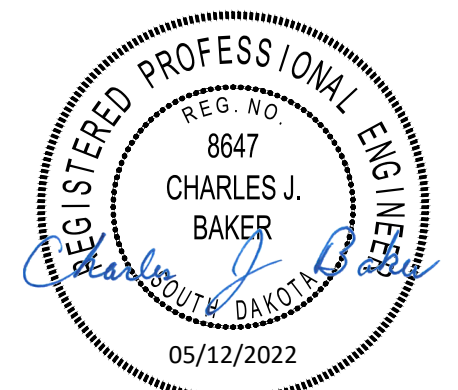
BASIS OF ESTIMATE

REMOVE & DISPOSE OF ASPHALT PAVEMENT - FULL DEPTH (P-101) -	AVERAGE DEPTH ASPHALT PAVEMENT: ± 1.5" AT OUTSIDE 25 FT ON EACH EDGE OF RUNWAY 7-25
COLD MILL ASPHALT PAVEMENT - 4" DEPTH (P-101) -	±4" AT INSIDE 100 FT OF RUNWAY 7-25
TOPSOIL REMOVAL (P-152) -	STRIP 6" OVER ALL EXCAVATION OR EMBANKMENT AREAS. (INCLUDED IN UNCLASSIFIED EXCAVATION QUANTITY FOR PAYMENT)
EMBANKMENT (P-152) -	15% ADDITIONAL VOLUME HAS BEEN ADDED FOR SHRINKAGE
ASPHALT MIX PAVEMENT (P-401) -	2 TON/CY
EMULSIFIED ASPHALT TACK COAT (P-603) -	0.10 GAL./S.Y.
TOPSOIL REPLACEMENT (T-905) -	MEASURED IN STOCKPILES BY AVERAGE END AREAS OR PRISMOIDAL METHOD (PAID FOR AS TOPSOILING)



PIERRE REGIONAL AIRPORT
 CITY OF PIERRE (OWNER)
 PIERRE, SOUTH DAKOTA

PROJECT WORK DESCRIPTION AND BASIS OF ESTIMATE
 Attachment D



DRAFTED
ERF
REVIEWED
CJB
PROJECT NUMBER
2005-01370
LAST REVISED DATE
05/10/2022

SHEET
5