



**Division of Finance & Management**

Office of Air, Rail & Transit

700 East Broadway Avenue

Pierre, SD 57501

O: 605.773-3574 | F: 605.773.2804

[dot.sd.gov](http://dot.sd.gov)

---

**TO:** South Dakota Railroad Board & Authority

**FROM:** Jack Dokken, Office of Air, Rail and Transit

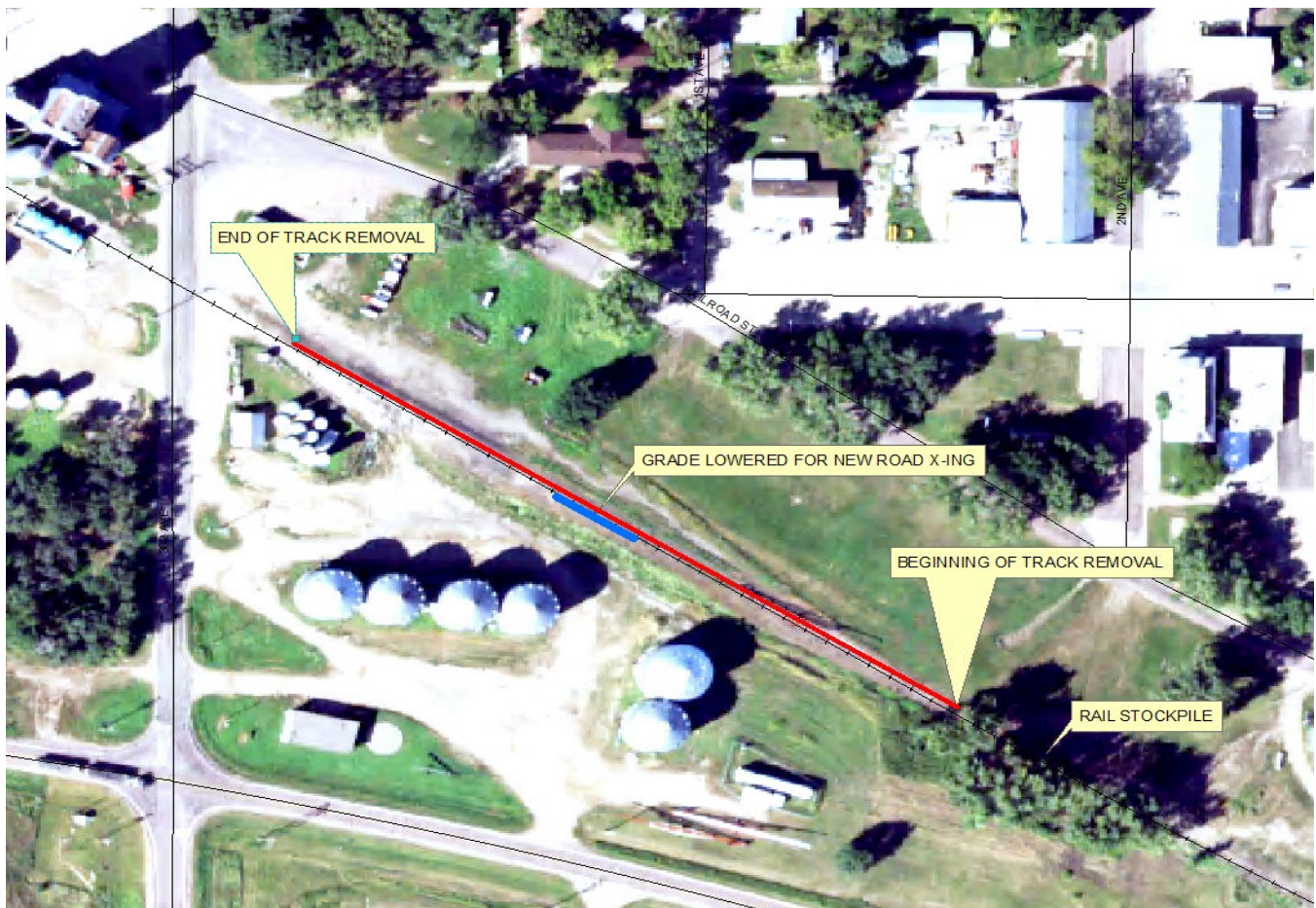
**DATE:** February 15, 2022

**SUBJECT:** Lake Andes Farmers Coop Elevator Rail and Grade Removal

The Lake Andes Farmers Coop Elevator (Coop) purchased excess railroad property from the Railroad Board on July 19, 2021. After the purchase, the Coop installed a truck scale on that property. Their new truck scale operations required a new road for the semi-trucks to approach the scale. In April, 2022, the Coop requested to remove track and lower the railroad grade for the new road with ditches and to make a flatter crossing, so the long trucks could cross without high centering on the railroad grade. Track removal permits require approval by the Railroad Board.

The track removal and grade lowering work was done in May 2022 before a permit could be approved. The alterations include removal of approximately 500 feet of rail and other track material as well as 60 feet of grade lowering for the new road with drainage ditches that cross the railroad. The removed steel materials were stockpiled on railroad right-of-way (ROW) to the east. The ties were taken to the city landfill and the soil was used for grade work. The track removal and grade work was done in the railbanked portion of the Napa to Platte rail line.

The South Dakota Department of Transportation recommends the Railroad Board approve a track removal permit with the requirement that in the event of reactivation of the rail line, the permittee would pay for the restoration of the grade, steel, and other components necessary to the design requirements of a railroad restoration project.



Air photo showing location of track removal marked with the red line. The grade lowering is at the new road X-ing and ditches marked with the blue line.





Looking northwest from on the railroad ROW. The new road and ditches are shown crossing the ROW from left to right.