



Division of Finance & Management

Office of Air, Rail & Transit

700 East Broadway Avenue

Pierre, SD 57501

O: 605.773-3574 | F: 605.773.2804

dot.sd.gov

---

TO: South Dakota Railroad Board

FROM: Jack Dokken, Office of Air, Rail & Transit

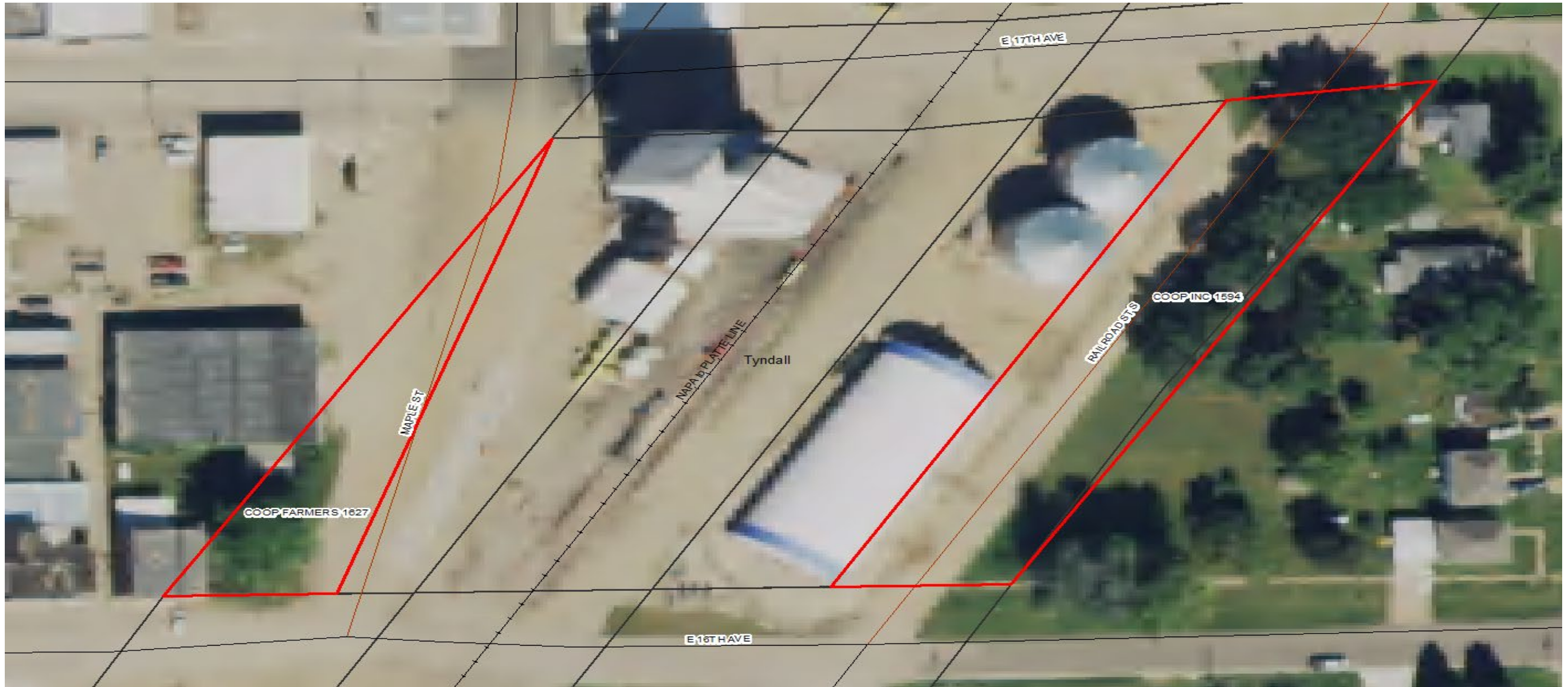
DATE: July 12, 2021

SUBJECT: NAPA-Platte Line excess property

---

On November 18, 2020, South Dakota Railroad Board approved Coop Farmers, Inc to purchase lease properties 1594 and 1627 located in Tyndall, South Dakota. Since that meeting the Coop Farmers, Inc was purchased by Central Farmers Coop. Central Farmers Coop is requesting approval to purchase the leased property originally approved for purchase by Coop Farmers, Inc.

# TYNDALL



**NOTE**

- Area outlined in red is leased property