



Division of Secretariat
Office of Legal Counsel
700 E. Broadway Avenue
Pierre, South Dakota 57501
Phone: 605 – 773 – 4396

MEMORANDUM

TO: Joel Jundt
FROM: Karla L. Engle
DATE: April 15, 2026
RE: April 23, 2026 Transportation Commission Meeting

The Department of Transportation (SDDOT) asks the Transportation Commission to approve amendments to the following administrative rule:

- 70:01:02:44 – Lincoln County speed zone rule.

Copies of the following documents are enclosed with this memo for the Transportation Commission's consideration:

1. The proposed rules;
2. The Rules Presentation Format form, listing the procedural steps that have been taken so far in the rule adoption process; and
3. A memo from the SDDOT Mitchell Region Traffic Engineer, explaining the purpose and effect of the proposed changes.

Any written comments that are timely received will be provided to the Transportation Commission at the meeting on April 23, 2026.

Thank you.

KLE
Enclosures

70:01:02:44. Lincoln County. The following are the maximum speeds on certain highways in Lincoln County:

(1) U.S. Highway 18 beginning ~~1.42~~ 1.4 miles west of West Street in Canton, then east to West Street, forty-five miles per hour; then east to Blair Street, thirty-five miles per hour; then east to Milwaukee Street, twenty-five miles per hour; then east to Lawler Street, thirty-five miles per hour; then east to a location one hundred feet east of North Noid Road, forty-five miles per hour; then east to the Iowa border, fifty-five miles per hour;

(2) State Trunk Highway 46 beginning ~~0.45~~ 0.5 mile west of the centerline of Interstate Highway 29, then east for 0.3 mile, forty-five miles per hour; then east for ~~0.65~~ 0.7 mile, thirty-five miles per hour; then east for one mile through Beresford to East 13th Street (also known as 472nd Avenue), thirty miles per hour; then east for ~~0.25~~ 0.3 mile, forty-five miles per hour;

(3) State Trunk Highway 17 beginning at the intersection with State Trunk Highway 44, then north for 1.4 miles past Lennox, forty-five miles per hour;

(4) State Trunk Highway 115 beginning at a point ~~0.53~~ 0.5 mile south of Lincoln County Road 110 (~~Harrisburg corner~~), then north ~~3.53 miles~~ to a point 0.1 mile south of the intersection with Veterans Parkway, fifty-five miles per hour; then north to 85th Street in Sioux Falls, ~~fifty-five~~ forty miles per hour;

(5) State Trunk Highway 44 beginning ~~0.25~~ 0.3 mile west of the centerline of Interstate 29, then east 0.5 mile, forty miles per hour;

(6) The crossroad over Interstate Highway 29 at Exit 50 beginning at a point ~~0.25~~ 0.3 mile west of the centerline of Interstate Highway 29, then east 0.5 mile, thirty miles per hour;

(7) The crossroad over Interstate Highway 29 at Exit 53 beginning at a point 0.2 mile west of the centerline of Interstate Highway 29, then east 0.4 mile, twenty-five miles per hour;

(8) The crossroad over Interstate Highway 29 at Exit 56 beginning at a point 0.2 mile west of the centerline of Interstate Highway 29, then east 0.4 mile, forty miles per hour;

(9) U.S. Highway 18 ~~and the Lincoln County road~~ over Interstate Highway 29 at Exit 59 beginning at a point ~~0.25~~ 0.3 mile west of the centerline of Interstate Highway 29, then east 0.1 mile, forty-five miles per hour; then east 0.4 mile, thirty-five miles per hour;

(10) U.S. Highway 18 over Interstate Highway 29 at Exit 62 beginning at a point ~~0.17~~ 0.2 mile west of the centerline of Interstate Highway 29, then east ~~0.53~~ 0.5 mile, fifty-five miles per hour;

(11) The crossroad over Interstate Highway 29 at Exit 68 beginning at a point ~~0.15~~ 0.2 mile west of the centerline of Interstate Highway 29, then east 0.3 mile, twenty-five miles per hour;

(12) The crossroad over Interstate Highway 29 at Exit 71 beginning at a point ~~0.15~~ 0.2 mile west of the centerline of Interstate Highway 29, then east 0.3 mile, twenty-five miles per hour;

(13) The crossroad over Interstate Highway 29 at Exit 73 beginning at a point ~~0.15~~ 0.2 mile west of the centerline of Interstate Highway 29, then east 0.3 mile, twenty-five miles per hour;

(14) State Trunk Highway 44 at Lennox beginning ~~1.05 miles~~ one mile west of the junction with State Trunk Highway 17 at Lennox, then east for ~~0.55~~ 0.6 mile to a point two hundred feet west of Elm Street, forty-five miles per hour; then east for 0.5 mile, thirty miles per hour; then south for ~~0.28~~ 0.3 mile, forty-five miles per hour;

(15) State Trunk Highway 11 beginning ~~1.82~~ 1.8 miles south of the Minnehaha-Lincoln county line, then north to the Minnehaha-Lincoln county line, fifty-five miles per hour.

Source: SL 1975, ch 16, § 1; 5 SDR 91, effective April 29, 1979; 6 SDR 109, effective May 29, 1980; 7 SDR 1, effective July 20, 1980; 8 SDR 154, effective May 26, 1982; 13 SDR 52, effective November 6, 1986; 13 SDR 129, 13 SDR 134, effective July 1, 1987; 15 SDR 185, effective June 4, 1989; 16 SDR 169, effective April 25, 1990; 17 SDR 127, effective March 3, 1991; 19 SDR 30, effective August 30, 1992; 20 SDR 183, May 9, 1994; 22 SDR 165, effective June 2, 1996; 26 SDR 44, effective October 4, 1999; 26 SDR 85, effective December 29, 1999; 28 SDR 24, effective August 29, 2001; 30 SDR 171, effective May 11, 2004; 33 SDR 43, effective September 19, 2006;

33 SDR 125, effective January 29, 2007; 37 SDR 182, April 20, 2011; 44 SDR 65, effective October 16, 2017; 47 SDR 58, effective November 30, 2020; 52 SDR 24, effective September 8, 2025.

General Authority: SDCL 32-25-7.

Law Implemented: SDCL 32-25-7.

FORM 15

Rules Presentation Format

Department/Board/Commission Name: **South Dakota Department of Transportation**

Please complete these questions to show that the SDCL 1-26 rule-making process is complete.

Use this format to organize your presentation to the Committee.

- Approval to proceed? Yes X No Date: **March 24, 2026**_____
- Date of public hearing April 23, 2026 _____
- Date proposed rules and supporting documents submitted to the LRC and the Bureau of Finance and Management March 26, 2026 _____
 - any publication incorporated by reference;
 - the fiscal note;
 - the impact statement on small business; and
 - the notice of hearing.
- Date and name of newspapers in which the notice of public hearing was published:
 - Date 4/2/2026 Newspaper Sioux Falls Argus Leader _____
 - Date 4/2/2026 Newspaper Sioux Valley News _____
 - Date 4/2/2026 Newspaper Pierre Capital Journal _____
 - Date 4/3/2026 Newspaper The Dakota Scout _____
- Summary of how, when, and number of interested persons, if any, were contacted.

On March 26, 2026, copies of the hearing notice and proposed rules were e-mailed or mailed to the individuals or entities who have requested notification of rulemaking. On March 26, 2026, copies of the hearing notice and proposed rules were mailed to the mayor and finance officer of Sioux Falls and the sheriff of Lincoln County. On March 26, 2026, information about this rulemaking was also posted on DOT's website and on the Open SD website. On March 30, 2026, and April 14, 2026, information about the hearing was posted on DOT's social media platforms, namely Facebook, X (formerly Twitter), Linked In, and Instagram. An additional post on DOT's social media platforms will be made on April 20, 2026.

- Page numbers in the minutes where the agency considered amendments, data, opinions, or arguments regarding the proposed rules, along with any changes and final action.

- For any rule implementing a bill from a preceding session, the number of the bill:
 N/A _____
- Date final rules and supporting documents submitted to the LRC and the Committee



Department of Transportation

Mitchell Region Office

1300 South Ohlman

Mitchell, South Dakota 57301

PHONE: 605/995-8129

DATE: 3/06/2026

TO: Jon Suomala
Operations Traffic Engineer

FROM: Corey Pinkley
Mitchell Region Traffic Engineer

SUBJECT: Proposed Speed Limit Administrative Rule Change
State Trunk Highway 115

Attached for the Transportation Commission's consideration is a speed limit administrative rule change on SD 115 from south of Veterans Parkway to 85th Street in Sioux Falls.

PROPOSED AMENDMENT:

70:01:02:44. Lincoln County: The following are the maximum speeds on certain highways in Lincoln County:

(4) State Trunk Highway 115 beginning at a point ~~0.53~~ 0.5 mile south of Lincoln County Road 110 (Harrisburg corner), then north ~~3.53~~ 3.2 miles to a point 0.1 mile south of the intersection with Veterans Parkway, 55 miles per hour; then north to 85th Street in Sioux Falls, ~~fifty five~~ 40 miles per hour;

COST

The estimated cost to make the necessary signing changes, if this proposal is approved, is as follows:

Install new sign: 2 @ \$125.00 per sign = \$ 250

- To install a SPEED LIMIT 40 sign and SPEED LIMIT 55 Sign

TOTAL: \$ 250.00

EXPLANATION OF THE PROPOSAL:

When going through the process of a different speed study on SD115 due to a petition and bringing it to the commission, it was noticed that signing in the field did not match the current rule as it was believed Sioux Falls already had jurisdiction over the area in question. This speed study is looking to evaluate what the speed limit should be from just south of Veterans Parkway to 85th Street in Sioux Falls and to see if the zone should be extended to the south through county road 271st St.

Due to the proximity of signals at Veterans Parkway and 85th St, the speed limit setting tool suggested using the 50th percentile speed rounded to the closest 5 mph increment, which would be 40 mph. Speed data between Veterans Parkway and 85th St. was used for this section. For this section, the Mitchell Region Traffic Engineer is recommending a speed limit of 40 mph.

For the portion extending to the south through 271st St, which is also signalized, speed data was gathered between Veterans Parkway and 271st St. The speed limit setting tool for this segment suggested using the 85th percentile speed rounded to the closest 5 mph increment, which would be 60 mph but has a max of 55 mph for this speed limit setting group based on roadway context and roadway type. The Mitchell Region Traffic Engineer does not recommend raising the speed limit for this portion of roadway to 60 mph and is recommending keeping it at 55 mph.

Between Veterans Parkway and 271st St, there is adequate space for vehicles to get up to speed with a rural feel. As you get into the area of Veterans Parkway and 85th St, the feel becomes more urban partially due to the proximity of signals, giving the feeling that drivers should slow down. Speed data supports these observations.

The Mitchell Region Traffic Engineer along with the safety and speed management advisory committee concur that the speed limit should be reduced from just south of Veterans parkway to 85th St. to 40 mph.

Captain Robert Mayer of the SD Highway Patrol and Sergeant Travis Olsen of the Sioux Falls Police Department concur with the changes.

SPEED STUDY:

A speed study was conducted on January 14, 2026 between Veterans Parkway and 85th St. A second speed study was conducted on February 6, 2026 Between county road 106 and veterans Parkway.

Speed Study Results:

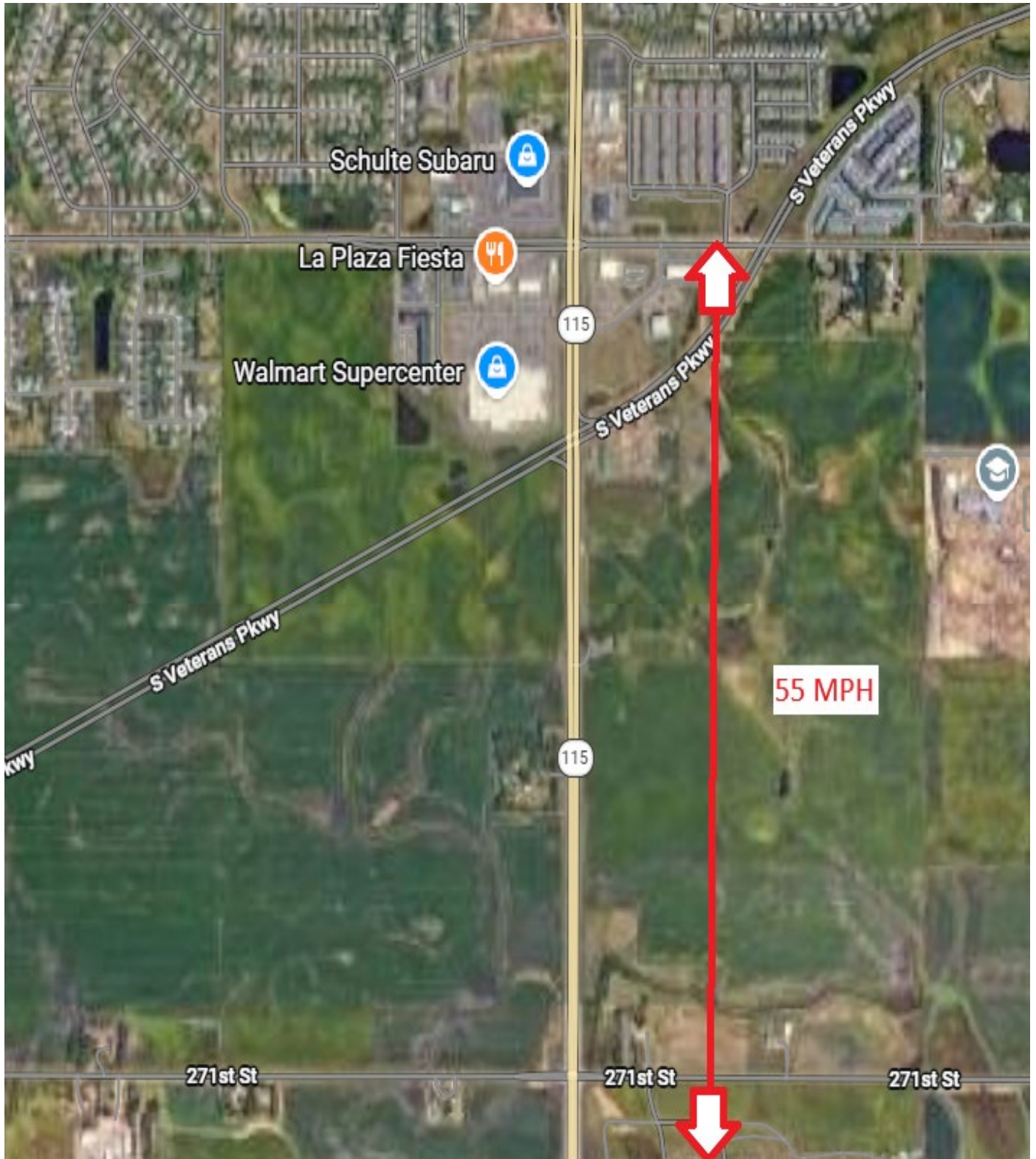
Between Veterans Parkway and 85th St.:

Number of vehicles checked	103
Average speed (MPH)	43
Percent exceeding speed limit	0.0%
Percent exceeding speed limit by more than 5 MPH	0.0%
Percent exceeding speed limit by more than 10 MPH	0.0%
85 th Percentile speed (MPH)	47
Ten mile pace (MPH)	37 to 46
Percent within the ten mile pace	80%
50 th Percentile speed	42
Fastest speed recorded (MPH)	54
Slowest speed recorded (MPH)	34

Between County Road 106 (271st St.) and Veterans Parkway:

Number of vehicles checked	102
Average speed (MPH)	53
Percent exceeding speed limit	30%
Percent exceeding speed limit by more than 5 MPH	4%
Percent exceeding speed limit by more than 10 MPH	0.0%
85 th Percentile speed (MPH)	58
Ten mile pace (MPH)	49 to 58
Percent within the ten mile pace	70%
50 th Percentile speed	53
Fastest speed recorded (MPH)	62
Slowest speed recorded (MPH)	42

EXISTING



PROPOSED

