

FOR SALE



amazon

NEWMAN LAND

DEVELOPMENT LAND

Bender
COMMERCIAL



**MARION ROAD & 259TH STREET
SIOUX FALLS, SD**



150.76 AC



\$35,000/AC

- Future Development Land located adjacent to Foundation Park in northwest Sioux Falls.
- Currently zoned for agriculture with potential for future rezoning and annexation.
- Includes three (3) building eligibilities.
- Easy access to I-90 and I-29.
- Contact broker for additional information.

ISAAC JORGENSEN

isaac@benderco.com
605-799-5058

ALEX SOUNDY, SIOR

alex@benderco.com
605-376-3700



Bender Commercial Real Estate Services | 305 West 57th Street | Sioux Falls, SD 57108 | 605-336-7600 | benderco.com

© 2024 Bender Companies. Information herein deemed reliable, but not guaranteed.

NEWMAN LAND



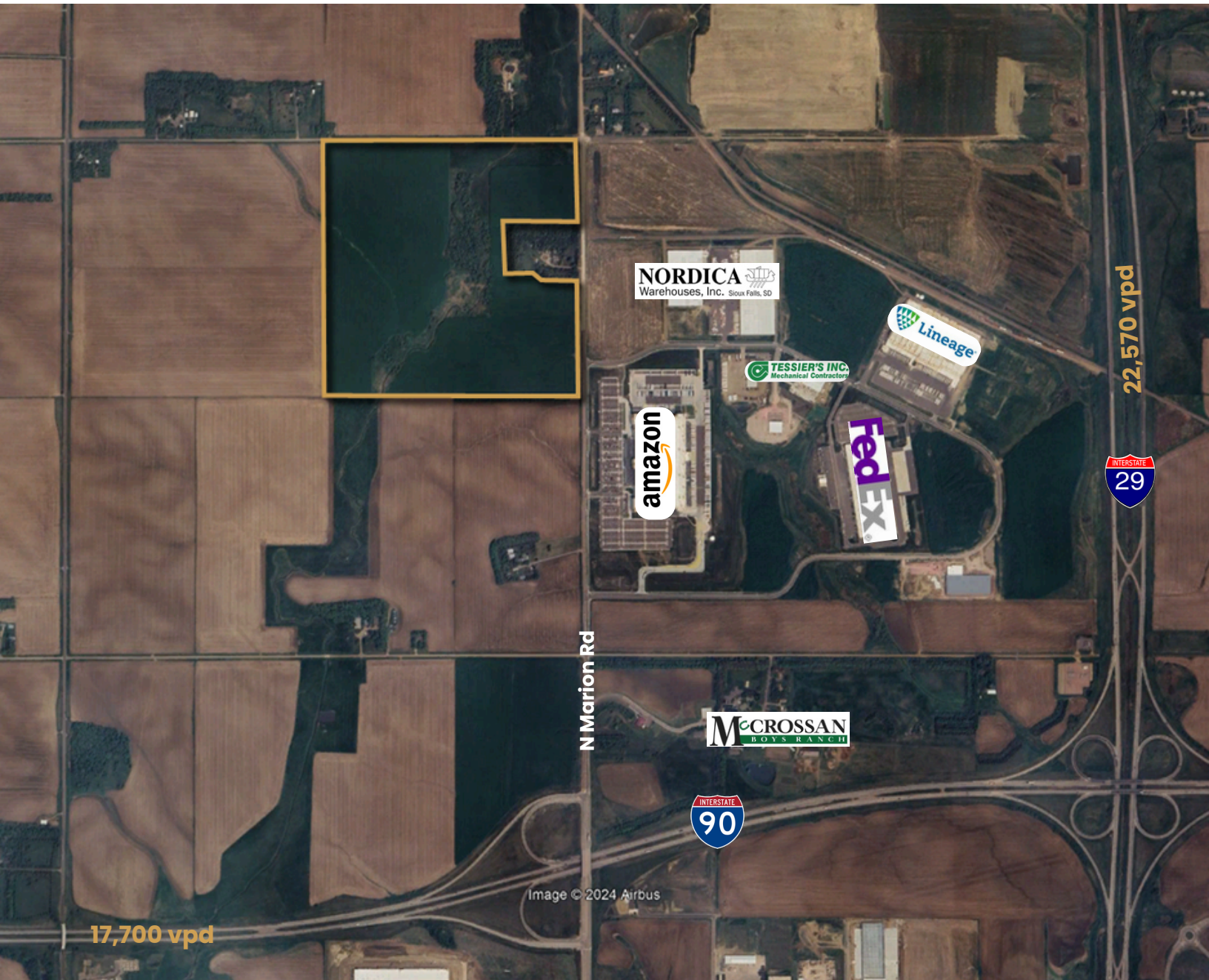
DEVELOPMENT LAND



NEWMAN LAND



DEVELOPMENT LAND



NEWMAN LAND



DEVELOPMENT LAND

