

South Dakota State Penitentiary (SDSP)

ADDRESS:1600 North Drive
PO Box 5911
Sioux Falls, SD 57117

DATE OPENED:1881 Administration, Federal Hall, West Hall
1884 Parole
1887 School
1896 Central Addition - Dining, Chapel, & Health Services
1904 PI Office
1907 PI #1
1924 East Hall
1932 Training Academy
1938 Root Cellar
1945 Health Services & Kitchen
1953 Garage, West Gate
1954 Warehouse
1959 SHU
196? Recreation Building
1964 Maintenance Building
2001 PI #2



DESIGN CAPACITY:Total - 423 beds
(based on single cell occupancy and not including the SHU)

West Hall – 138 beds (based on single cell occupancy)

Federal Hall – 88 beds (based on single cell occupancy)

East Hall – 200 (based on single cell occupancy)

Special Housing Unit (SHU) – 38 Beds

OPERATIONAL CAPACITY:Total - 837 beds (not including the SHU)

CURRENT OCCUPANCYTotal - 617 inmates

West Hall – 191

Federal/East Hall North – 221

Federal/East Hall South – 194

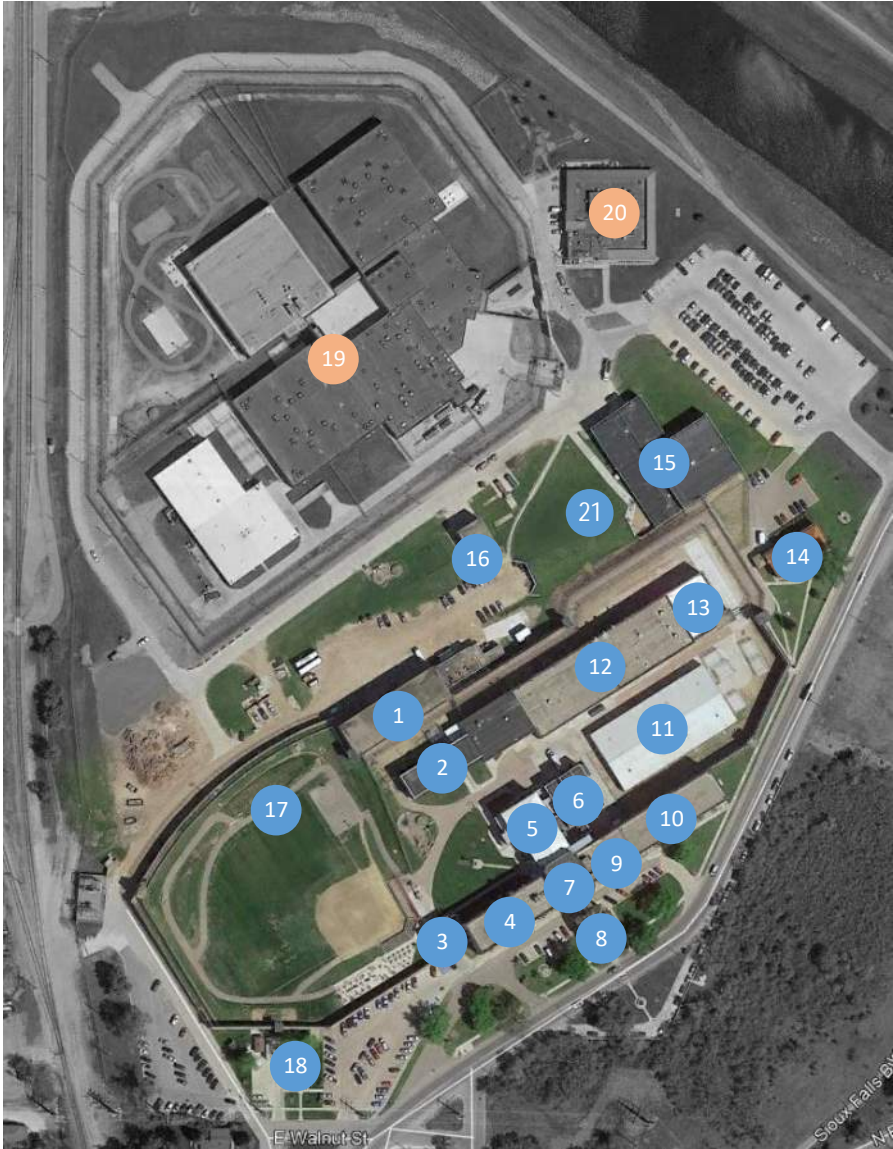
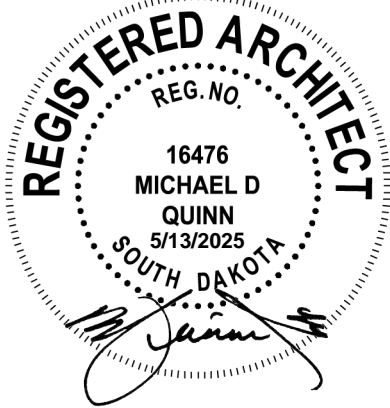
Special Housing Unit (SHU) – 11

SECURITY LEVELS:Level IV

SITE SIZE:Approx. 23 acres

OF BUILDINGS:11

TOTAL BUILDING AREA:409,062 GSF



- SDSP – Map Key:
1. Food Service Warehouse

2. Coolidge Learning Center (School)

3. West Gate

4. West Hall

5. Central Addition - Dining, Chapel, & Health Services

6. Health Services & Kitchen

7. Administration

8. Parole (Warden’s House)

9. Federal Hall

10. East Hall

11. Prison Industries #2

12. Prison Industries #1

13. Restrictive Housing (SHU)

14. Training Academy

15. Rec Building

16. Maintenance Building

17. Garage (below Rec Yard)

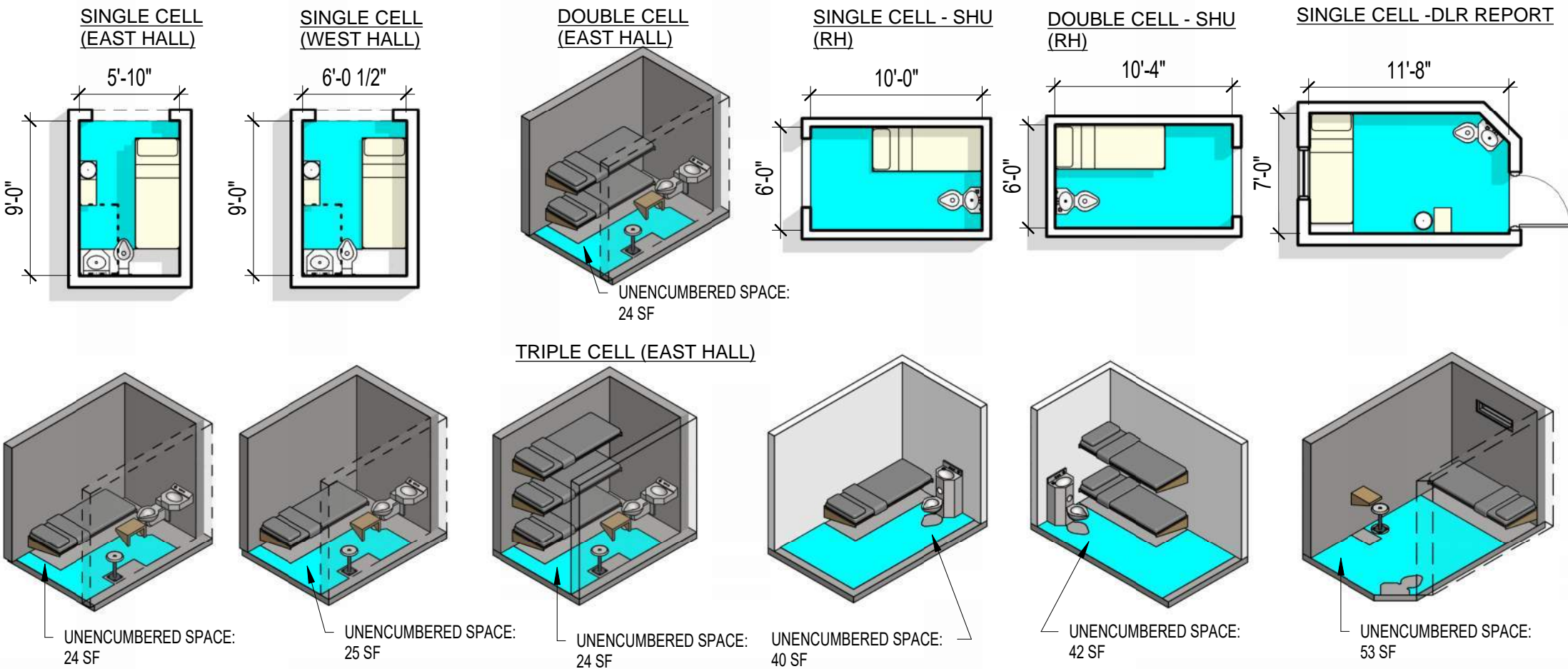
18. PI Office (Deputy Warden’s House)

19. Jameson Prison Annex (JPA)

20. Sioux Falls Minimum Center (SFMC)

21. Root Cellar (Below Grade)

South Dakota State Penitentiary (HILL)



DLR Report:
Inmate housing consists of three cell halls: West Hall on the west side of the Administration, Federal Hall, and East Hall, both on the east side of the Administration. There were a few triple bunked bed at the time of DLR report. **Per the latest site study, all the inmate cells are double bunked.** Most are approximately **58 net square feet**, and some are approximately **63 net square feet**.

SDSP houses inmates classified as high-medium security. Inmates that require temporary housing separation due to behavioral issues are placed in the Special Housing Unit (SHU). Inmate housing on the first floor consists of two separate housing wings, one wing with 9 cells, **single occupancy** (with a concrete bunk) and the other with 9 cells, **double bunked**. A dayroom/ circulation area in front of the cells on each side contain one "lock-in" shower and a steel mesh cage used for indoor recreation. The second floor, accessible only by stairs, contains two separate housing wings, with one side containing 11 cells and the other 9 cells. Each wing has one "lock-in" shower.

ACA STANDARDS:

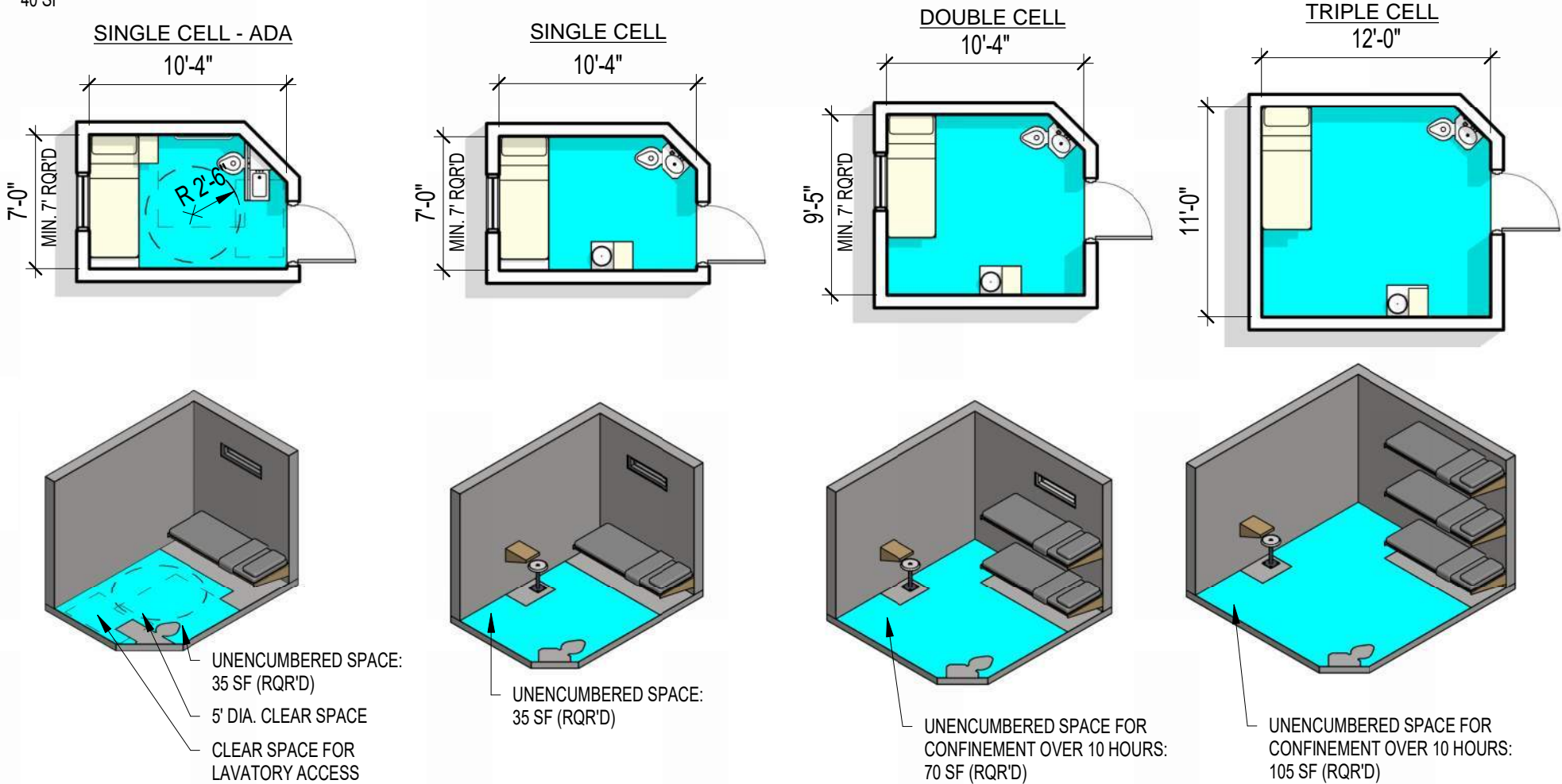
Single-Occupancy Cells

5-ALDF-1A-08 (Ref. 4-ALDF-1A-09) Single cells in general population provide at least 35 square feet of unencumbered space. At least 70 square feet of total floor space is provided when the occupant is confined for more than 10 hours per day.

Comment: Unencumbered space is usable space that is not encumbered by furnishings or fixtures. At least one dimension of the unencumbered space is no less than seven feet. In determining the unencumbered space, the total square footage is obtained and the square footage of the fixtures is subtracted. All fixtures must be in operational position for these calculations.

Multiple-Occupancy Rooms/Cells

5-ALDF-1A-09 (Ref. 4-ALDF-1A-10) Multiple-occupancy rooms/cells house between two and 64 occupants and provide 25 square feet of unencumbered space per occupant. When confinement exceeds 10 hours per day, at least 35 square feet of unencumbered space is provided for each occupant.



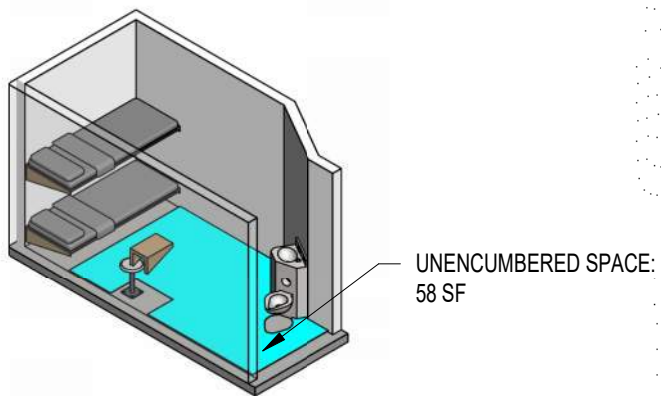
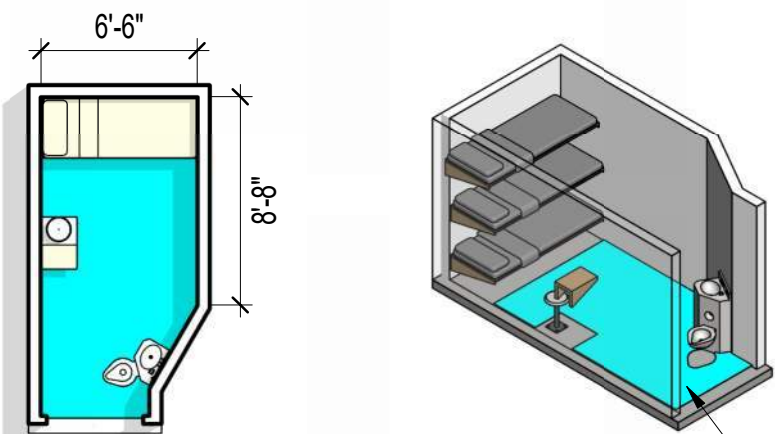
Jameson Prison Annex (JPA)

ADDRESS:	1600 North Drive PO Box 5911 Sioux Falls, SD 57117	
DATE OPENED:	1993 – Main Facility 2006 – Unit ‘D’ 2021 – Health Services Expansion	
DESIGN CAPACITY:	Total - 576 beds (If all cells were double occupancy)	
	----- Main Facility – 3 Housing Units – 288 cells (the original cell design can accommodate double occupancy) Housing Unit ‘A’ – 6 pods – 96 cells (192 beds at Double occupancy) Housing Unit ‘B’ – 3 pods – 96 cells (192 beds at Double occupancy) Converted program space (Unit ‘B’)— 16 beds Housing Unit ‘D’ – 6 pods – 96 cells (192 beds at Double occupancy)	
OPERATIONAL CAPACITY:	Total - 676 beds	
CURRENT OCCUPANCY:	Total - 469 inmates	
	----- Main Facility – 406 Housing Unit ‘A’ – 113 (Mental Health, Restricted, Disciplinary) Housing Unit ‘B’ – 72 (General Population) Housing Unit ‘B’ – 153 (Assessment & Orientation) ID Office – 1 Housing Unit ‘D’ – 130 (General Population)	
SECURITY LEVELS:	Level V	
SITE SIZE:	Approx. 20 acres	
# OF BUILDINGS:	Main Building – 2	
TOTAL BUILDING AREA:	189,008 GSF	



- JPA – Map Key:**
- 1. Main Building (JPA)
 - 2. Production Building (JPA)
 - 3. South Dakota State Penitentiary (SDSP)
 - 4. Sioux Falls Minimum Center (SFMC)

Jameson prison annex (JPA) - Cell



DLR Report:

The facility was opened in 1993 and currently houses an average daily population (ADP) of approximately **450 inmates**, housed in three separate housing units. These housing units are similar in physical plant layout, all **cells are now mostly triple bunked**. It was noted that several cells in these housing units are equipped with a concrete bunk for single occupancy use by special management inmates. All cells are equipped with a combination, security grade stainless steel toilet/lavatory. Some cells also contain a metal desk and stool attached to the dividing wall between the cells. Each housing unit has 96 cells arranged in a 270-degree pattern, in a two-level layout (ground floor and mezzanine level). The housing units are further divided into either three or six sub-dayrooms, consisting of 16- and 3- cell housing pods.

ACA STANDARDS:

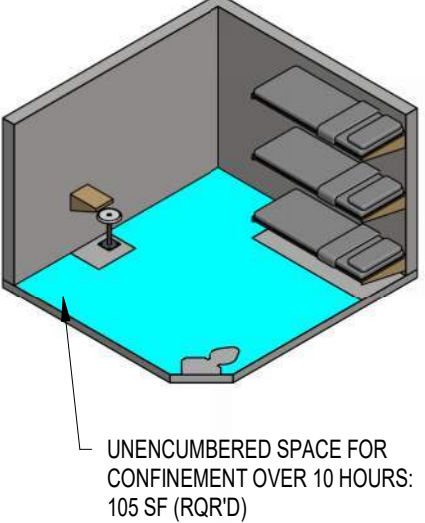
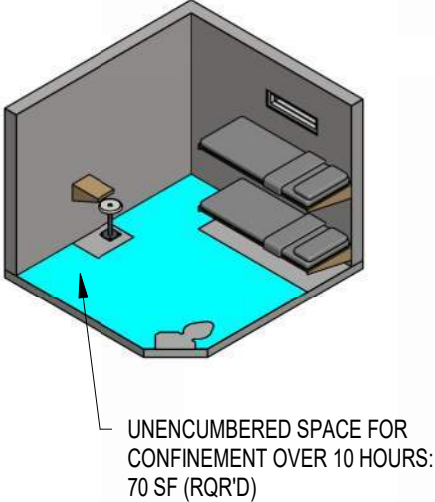
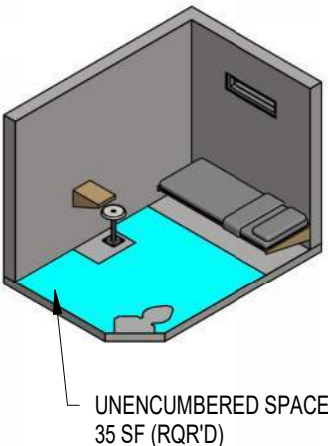
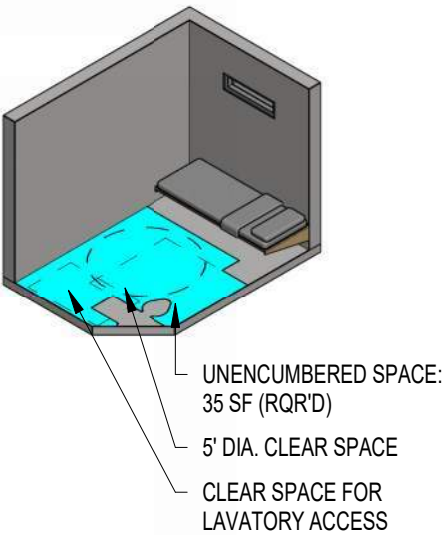
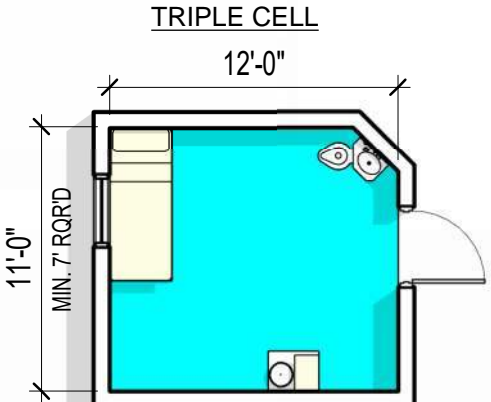
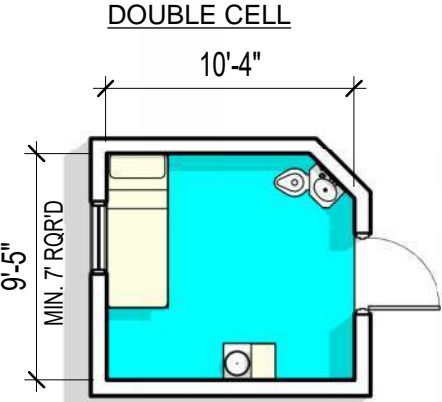
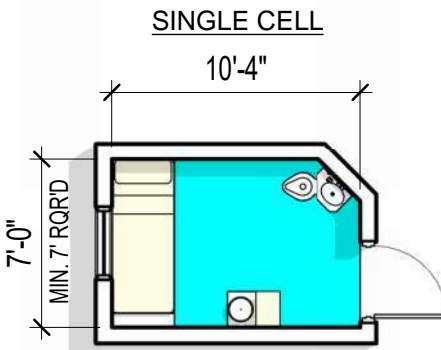
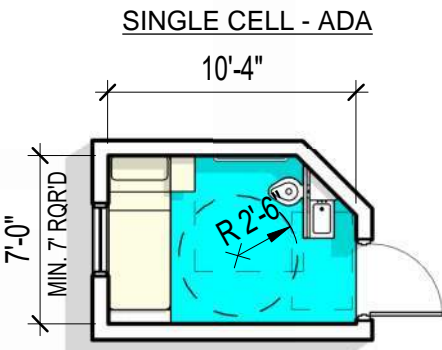
Single-Occupancy Cells

5-ALDF-1A-08 (Ref. 4-ALDF-1A-09) Single cells in general population provide at least 35 square feet of unencumbered space. At least 70 square feet of total floor space is provided when the occupant is confined for more than 10 hours per day.

Comment: Unencumbered space is usable space that is not encumbered by furnishings or fixtures. At least one dimension of the unencumbered space is no less than seven feet. In determining the unencumbered space, the total square footage is obtained and the square footage of the fixtures is subtracted. All fixtures must be in operational position for these calculations.

Multiple-Occupancy Rooms/Cells

5-ALDF-1A-09 (Ref. 4-ALDF-1A-10) Multiple-occupancy rooms/cells house between two and 64 occupants and provide 25 square feet of unencumbered space per occupant. When confinement exceeds 10 hours per day, at least 35 square feet of unencumbered space is provided for each occupant.



Jameson prison annex (JPA) - Dayroom

ACA STANDARDS:

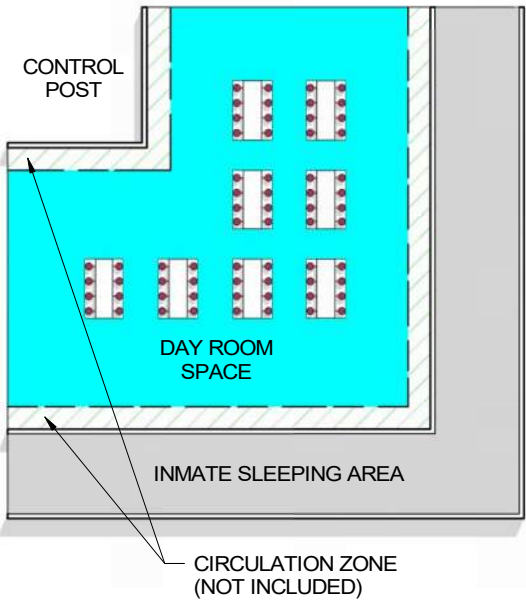
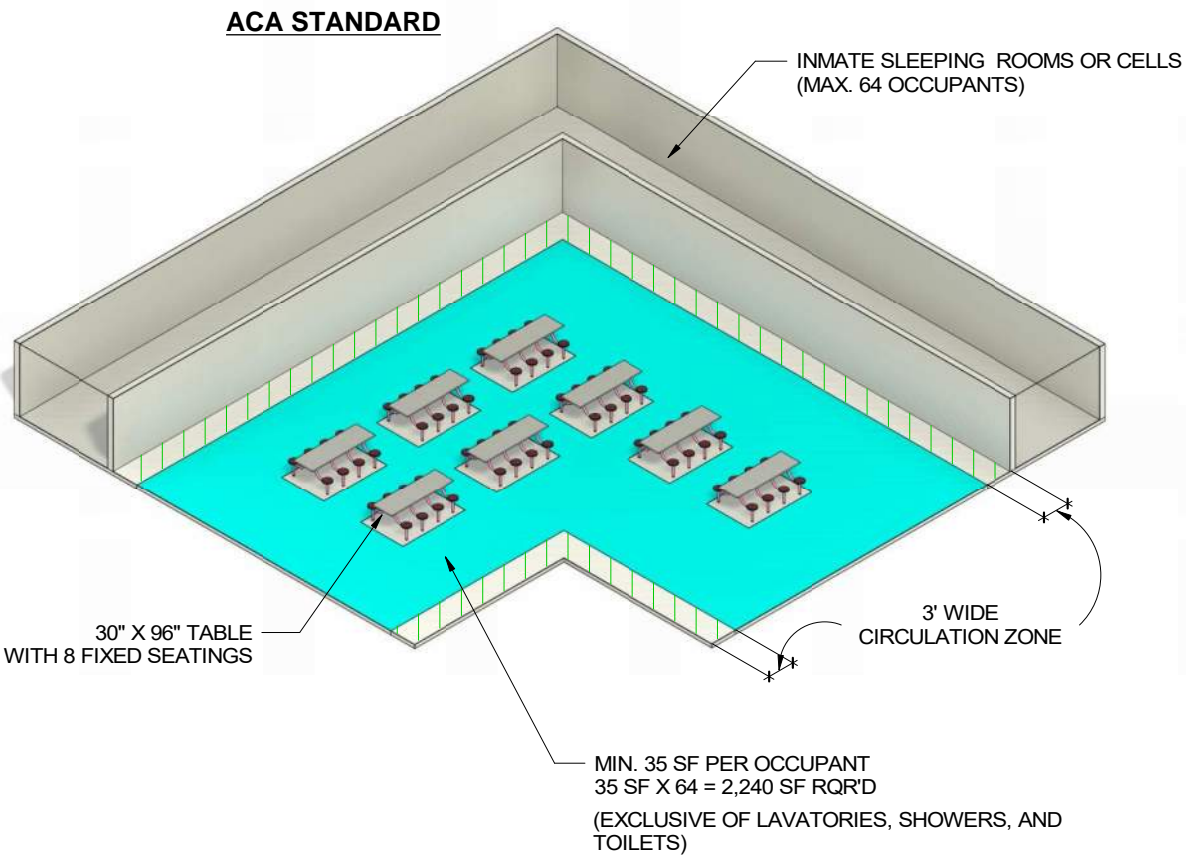
Dayrooms

5-ALDF-1A-11
(Ref. 4-ALDF-1A-12)

Dayrooms with space for varied inmate activities are situated immediately adjacent to inmate sleeping areas. Dayrooms provide a minimum of 35 square feet of space per inmate (exclusive of lavatories, showers, and toilets) for the maximum number of inmates who use the dayroom at one time. No dayroom encompasses less than 100 square feet of space, exclusive of lavatories, showers, and toilets.

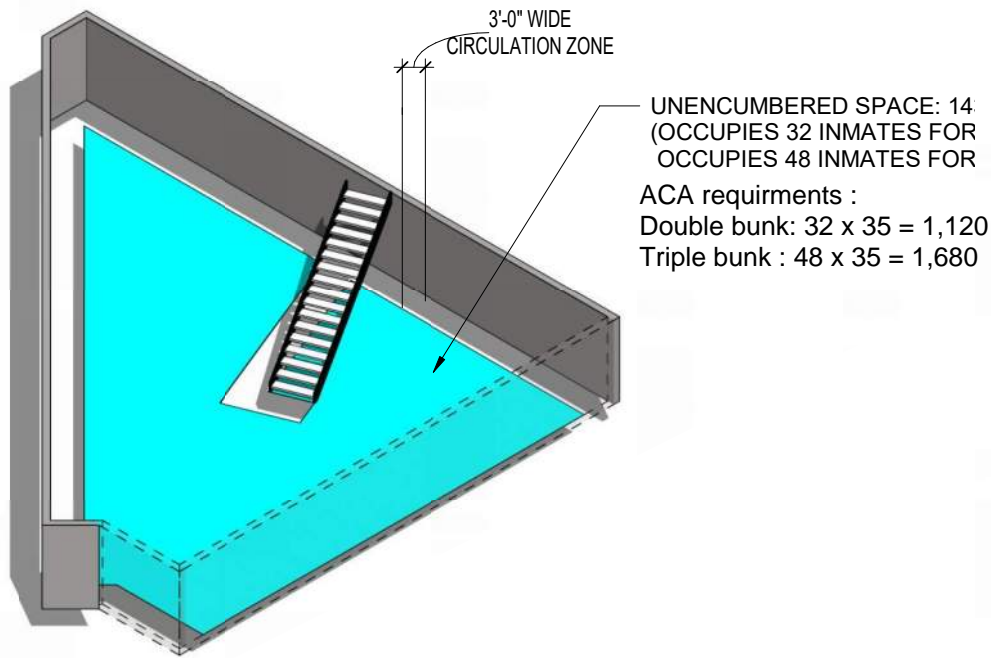
Jameson Prison Annex (JPA):

All inmate housing accommodations are in a cell and adjacent dayroom configuration, with the exception of some temporary dormitory housing used for lower security inmates awaiting transport.

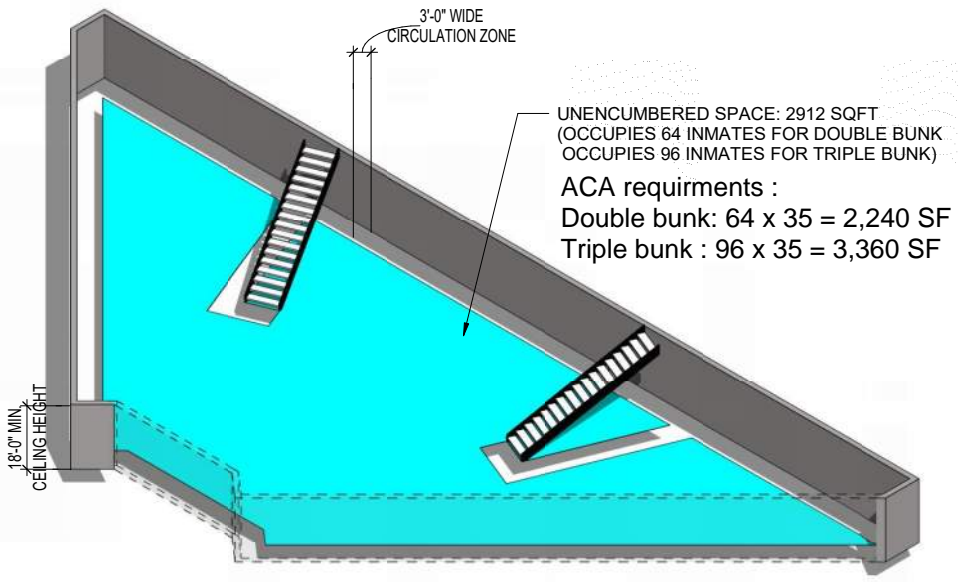


TYPICAL DAY ROOM

DAYROOM (UNITS A AND D)

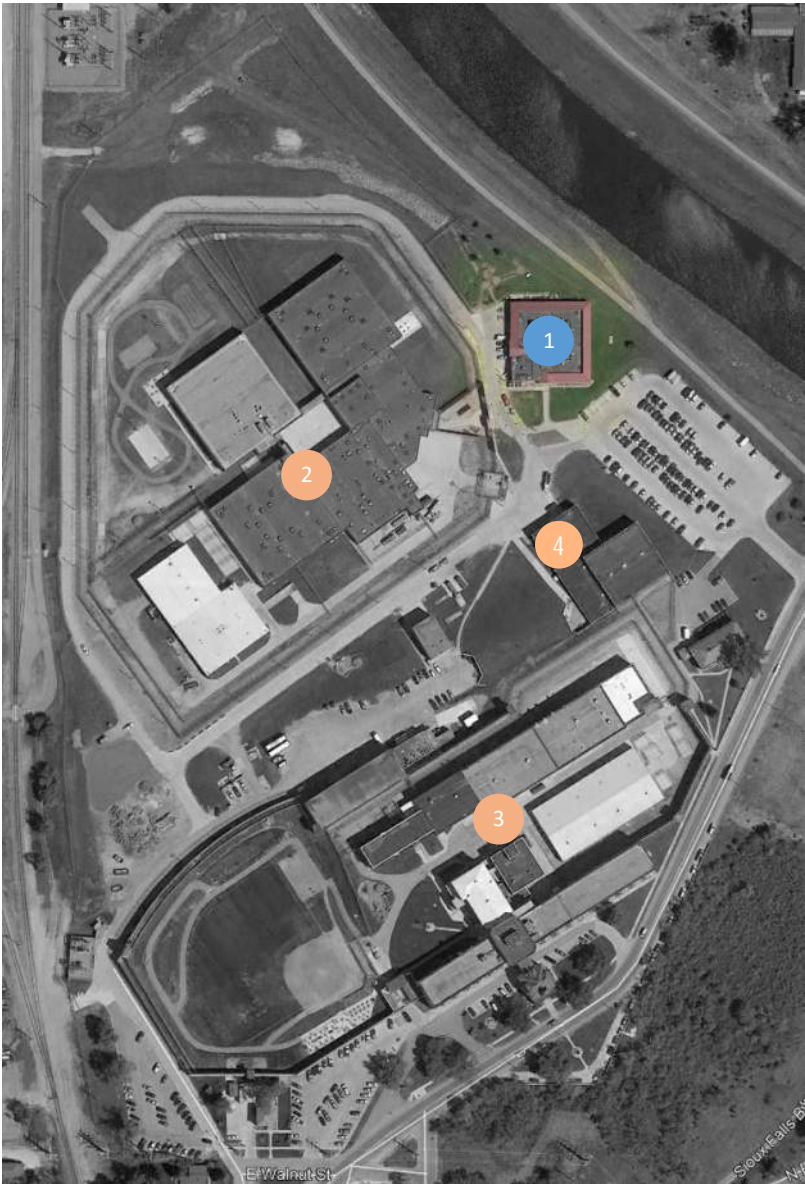


DAYROOM (UNITS B)



Sioux Falls Minimum Center (SFMC)

ADDRESS:	1600 North Drive PO Box 5911 Sioux Falls, SD 57117
DATE OPENED:	1993
DESIGN CAPACITY:	Total - 80 beds (In 3 pods, dormitory style)
OPERATIONAL CAPACITY:	Total - 244 beds
CURRENT OCCUPANCY:	Total - 218 Inmates
SECURITY LEVELS:	Level II
SITE SIZE:	Approx. 1 acre
# OF BUILDINGS:	1
TOTAL BUILDING AREA:	16,384 GSF



- SFCWC - Map Key:**
- 1. Main Building - Sioux Falls Minimum Center (SFMC)
 - 2. Jameson Prison Annex (JPA)
 - 3. South Dakota State Penitentiary (SDSP)
 - 4. Recreation Building

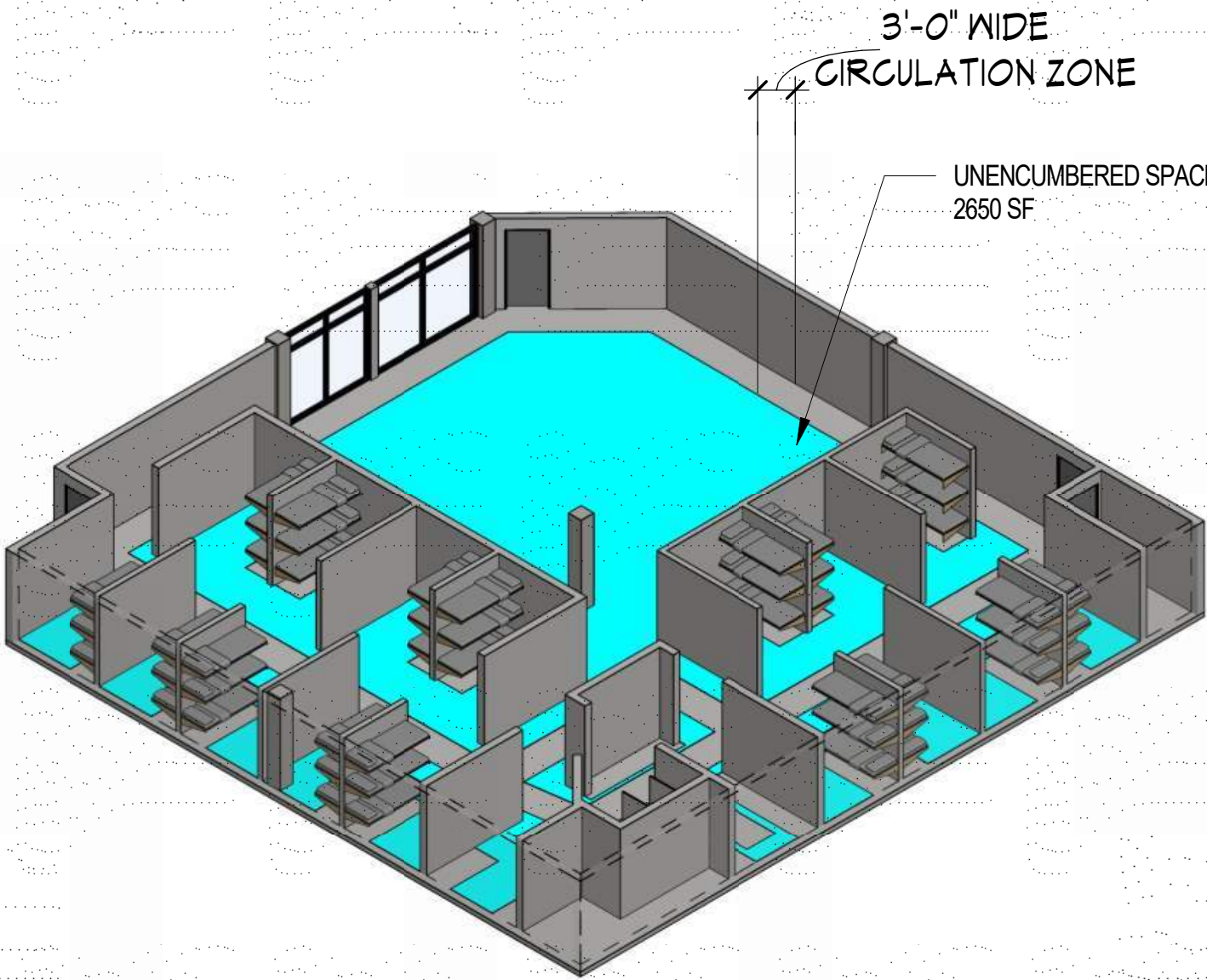
Sioux Falls Minimum Center (SFMC) - Dormitory

DLR Report:

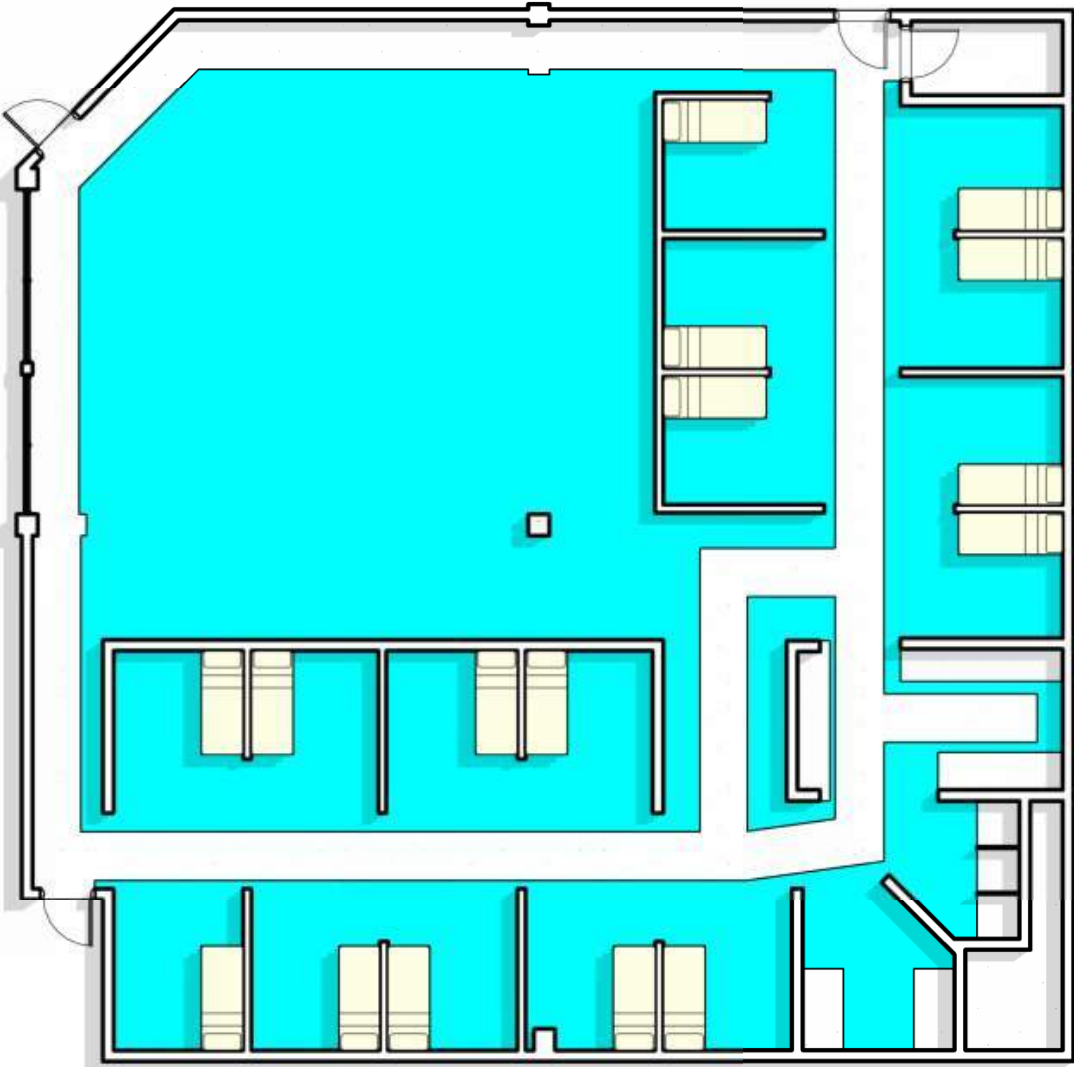
This facility is classified as minimum-security and houses inmates who participate in various work release community service programs in the Sioux Falls area. Inmate housing is provided in three separate living units. Each living unit currently houses approximately 80 inmates in a dormitory style, low partition walls with three-level bunks beds. Each housing unit contains a central toilet/shower area and janitor closet.

SPACE SHORTCOMINGS:

This minimum-security facility was opened in 1993 to house inmates on community and work release programs. The facility was originally designed as a 96-bed dormitory and is now housing an average of 240 inmates.



SFMC DORMITORY



SFMC DORMITORY

South Dakota State Penitentiary (SDSP) - Recreation Area

ACA STANDARDS:

Exercise and Recreation

5-ALDF-5C-01 (Ref. 4-ALDF-5C-01) Inmates have access to exercise opportunities and equipment, including at least one-hour daily of physical exercise outside the cell, and outdoors, when weather permits.

5-ALDF-5C-02 (Ref. 4-ALDF-5C-02) Inmates have opportunities to participate in leisure-time activities outside their respective cell or room on a daily basis.

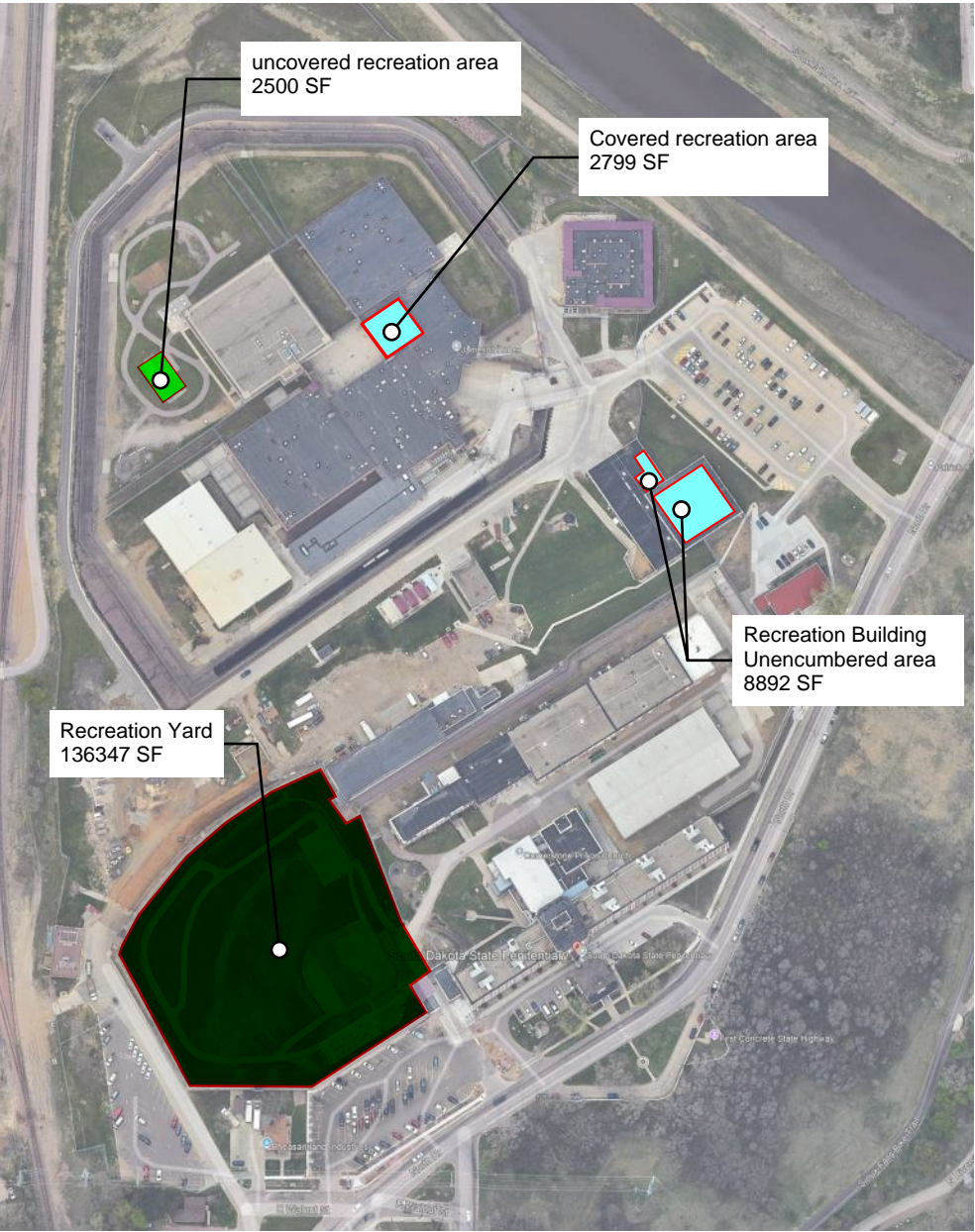
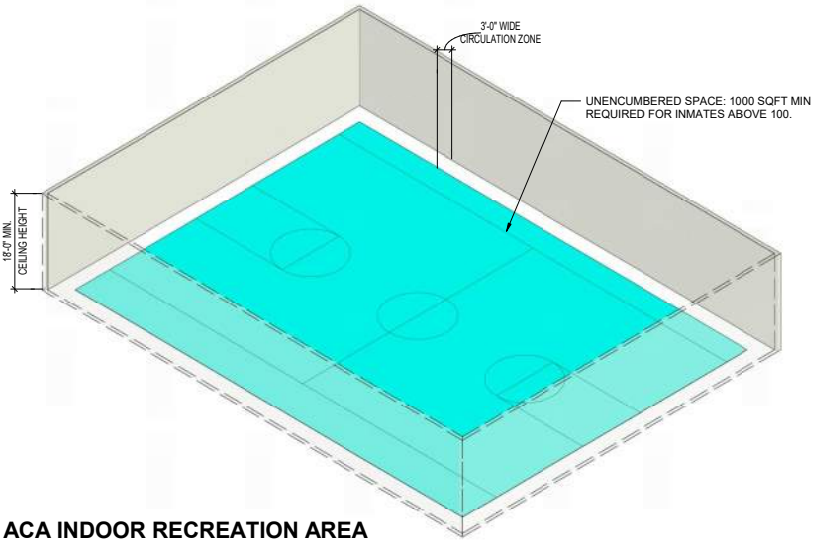
5-ALDF-5C-03 (Ref. 4-ALDF-5C-03) Both outdoor and covered/enclosed exercise areas for general population inmates are provided in sufficient number to ensure each inmate is offered at least one hour of access daily. Use of outdoor areas is preferred, but covered/enclosed areas must be available for use in inclement weather. Covered/enclosed areas can be designed for multiple uses as long as the design and furnishings do not interfere with scheduled exercise activities. The minimum space requirements for exercise areas are as follow:

- Outdoor exercise areas in facilities where 100 or more inmates utilize one recreation area—15 square feet per inmate for the maximum number of inmates expected to use the space at one time, but not less than 1,500 square feet of unencumbered space.
- Outdoor exercise areas in facilities where less than 100 inmates utilize one recreation area—15 square feet per inmate for the maximum number of inmates expected to use the space at one time, but not less than 750 square feet of unencumbered space.
- Covered/enclosed exercise areas in facilities where 100 or more inmates utilize one recreation area have 15 square feet per inmate for the maximum number of inmates expected to use the space at one time, with a minimum ceiling height of 18 feet, but not less than 1,000 square feet of unencumbered space.
- Covered/enclosed exercise areas in facilities where less than 100 inmates utilize one recreation area have 15 square feet per inmate for the maximum number of inmates expected to use the space at one time, with a minimum ceiling height of 18 feet, but not less than 500 square feet of unencumbered space.

5-ALDF-5C-04 (Ref. 4-ALDF-5C-04) Special management and restrictive housing units have either outdoor uncovered or outdoor covered exercise areas. The minimum space requirements for outdoor exercise areas are as follows:

- Group areas: 330-square feet of unencumbered space can accommodate two inmates. For each additional 150-square feet of unencumbered space, an additional inmate may use the exercise area simultaneously. (Formula: for each 150 square feet of unencumbered space exceeding the base requirement of 180 square feet for the first inmate, equals the maximum number of inmates who may use the recreation space simultaneously).
- Individual areas: 180 square feet of unencumbered space.

In cases where cover is not provided to mitigate inclement weather, appropriate weather-related equipment and attire should be made available to inmates who desire to take advantage of their authorized exercise time.



SOUTH DAKOTA STATE PENITENTIARY
SHOWER COUNTS

SHOWER COUNTS

BUILDING	# OF SHOWERS	# OF INMATES	ACA (PERSONS PER SHOWER)
JPA			
UNIT A	12	182	15.16666667
UNIT B	12	219	18.25
UNIT D	12	192	16
SIOUX FALLS CWC			
UNIT C	15	218	14.53333333
SHU BUILDING			
SHU UNIT	4	11	2.75
SDSP			
FERERAL & EAST HALL	46	415	9.02173913
WEST HALL	?	191	

SOUTH DAKOTA STATE PENITENTIARY PROGRAM ANALYSIS

PROGRAM SF_SDDOC

SPACE	SPACE SF
JAMESON PRISON ANNEX	
MULTI-PURPOSE	2,441 SF
LIBRARY	1195 SF
CLASSROOM	1661 SF
GYMNASIUM	4332 SF
WEIGHTS	175 SF
TEACHERS AREA	301 SF
PROGRAM SPACE	644 SF
TOTAL	10,749 SF
SF PER INMATE (593 inmates)	17 SF
MULTI-PURPOSE (UNIT C SIOUX FALLS)	
TOTAL	649 SF
SF PER INMATE (218 inmates)	2.9 SF
SDSP	
CENTRAL ADDITION - CHAPEL	10,173SF
CHAPEL(3RD FLOOR)	
MEZZANINE / EVENT ROOMS (4TH FLOOR)	
COOLIDGE LEARNING CENTER	9265 SF
RECREATION BLD	26,417 SF
TOTAL	47,364 SF
SF PER INMATE (617 Inmates)	77 SF

<i>South Dakota Department of Corrections (SDDOC) Facility (As of June 30, 2021)</i>	<i>Current Occupancy</i>	<i>Operational Capacity per SDDOC</i>	<i>Design Capacity per ACA</i>
Jameson Prison Annex (JPA)	593	676	576 ^b
Mike Durfee State Prison (MDSP)	1,009	1,043	963
Rapid City Community Work Center (RCCWC)	260	420	216
Sioux Falls Community Work Center (SFCWC)	218	244	80
South Dakota State Penitentiary (SDSP)	617 ^c	837 ^c	426 ^c
South Dakota Women's Prison (SDWP)	411 ^d	450 ^d	322 ^d
Yankton Community Work Center (YCWC)	277	332	192
Totals	3,261 ^a	4,002 ^a	2,775

a - Excludes Temporary Absence & Community Placements

b - Assumes all double occupancy cells for Design Capacity

c - Excludes Special Housing Unit (SHU) Numbers

d - Excludes Prisoners and Children Together (PACT) House Numbers

Mike Durfee State Prison (MDSP)

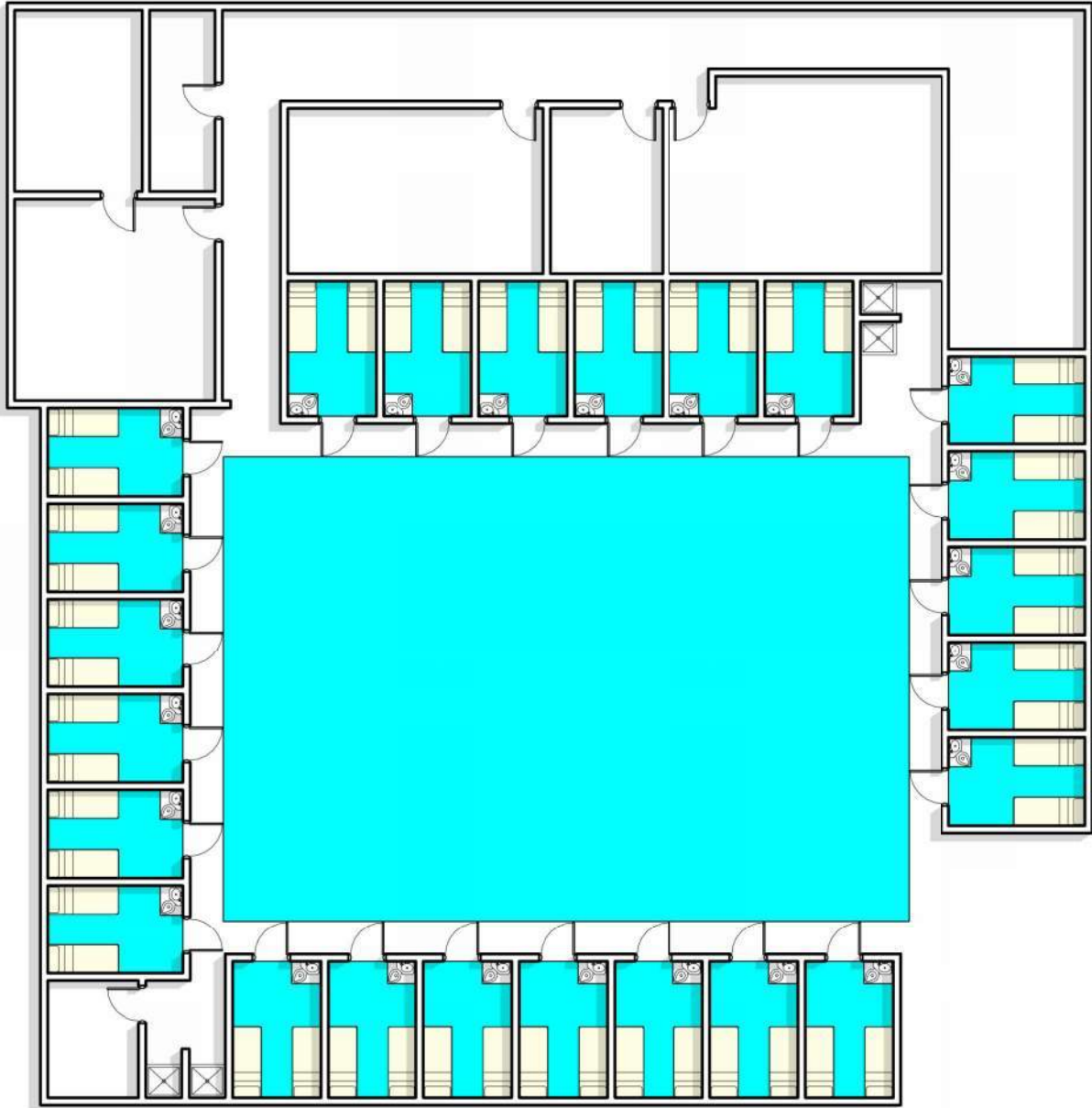
ADDRESS:	1412 Wood Street Springfield, SD 57062
DATE OPENED:	1984 (SDDOC acquisition of former USD -Springfield campus)
DESIGN CAPACITY:	<div>Total - 963 beds</div> <div>Barracks Building - 360 beds – 3 dormitory housing units</div> <div><ul style="list-style-type: none">Unit B-1 – General Population - 140 bedsUnit B-2 – General population – 140 bedsUnit B-3 – Orientation, Medical, General Population - 80 bedsSpecial Housing Unit (not included in total capacity) -24 single cells</div> <div>Crawford Hall – 2 housing wings, three floors each - 50 beds per floor/wing – West Hall – 150 beds; East Hall - 150 beds - Total 300 beds</div> <div>Harmon Hall – 1 housing wing, 3 floors - 52 beds/floor - Total 159 beds</div> <div>Ludeman Hall – 1 housing wing, 3 floors - 48 beds/floor - Total 144 beds</div>
OPERATIONAL CAPACITY:	Total - 1,043 beds
CURRENT OCCUPANCY:	<div>Total – 1,009 inmates</div> <div>Barracks Building – 367 (including SHU)</div> <div>Crawford Hall: West – 213; East – 212</div> <div>Harmon Hall – 216</div> <div>Ludeman – 0 (not currently in use)</div> <div>Infirmery – 1</div>
SECURITY LEVELS:	Low-Medium
SITE SIZE:	65 acres
# OF BUILDINGS:	23
TOTAL BUILDING AREA:	384,966 GSF



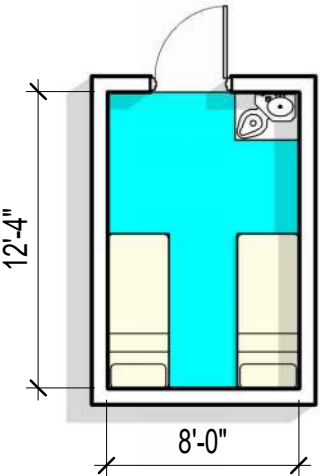
MIKE DURFEE STATE PRISON - BARRACKS - SHU

DLR REPORT:

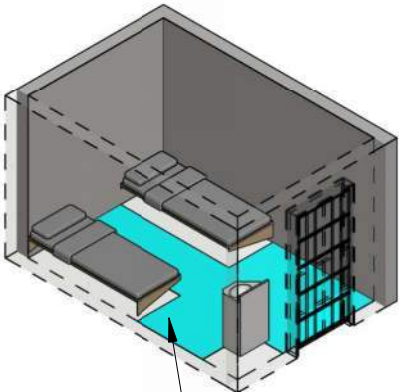
- The same building also contains the Special Housing Unit (SHU), where inmates are placed for a short term while in disciplinary segregation.
- Each cell contains two single-level concrete beds and a security grade toilet/lavatory fixture. There are four inmate showers in the SHU, one is ADA compliant.



SHU UNIT

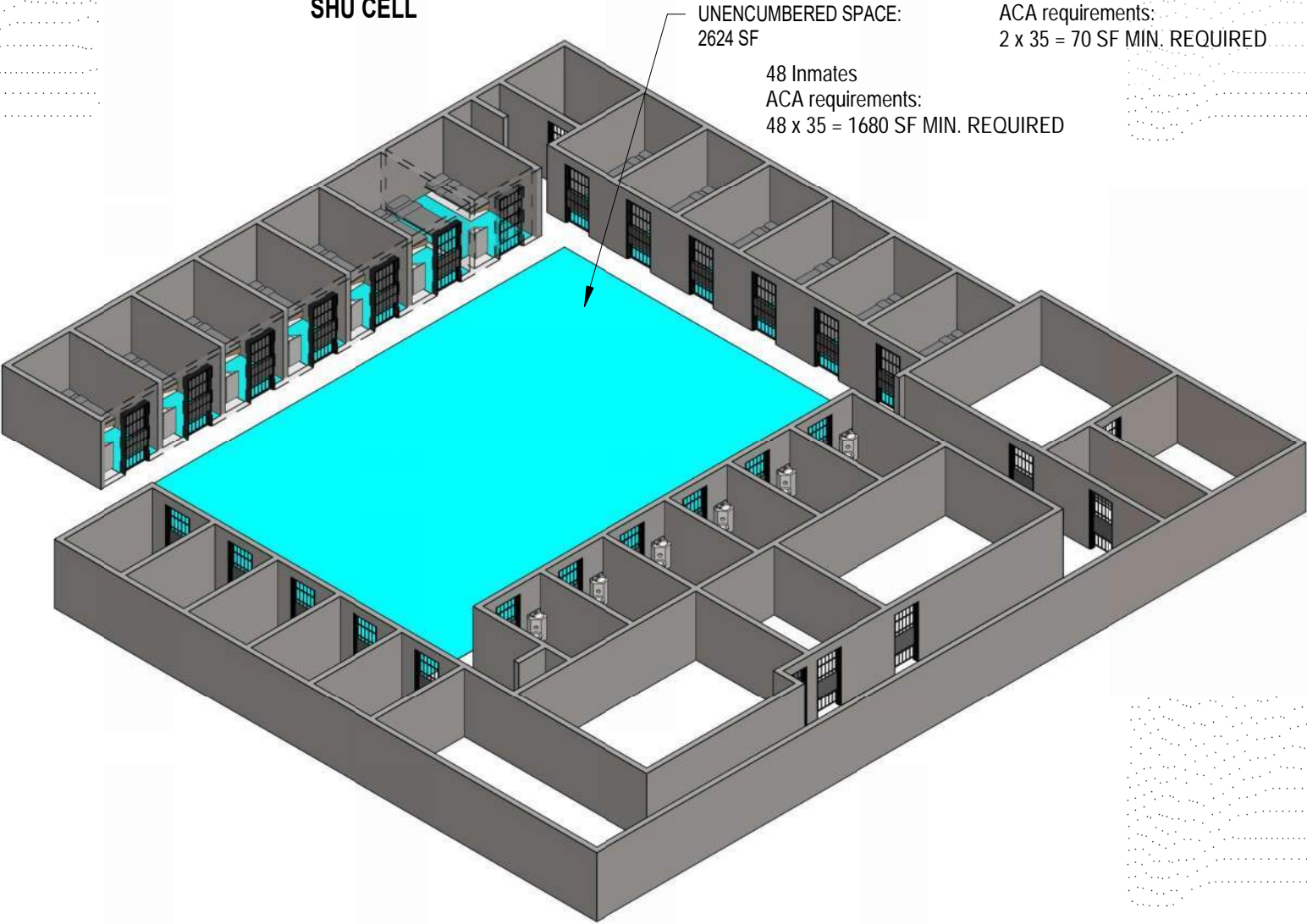


SHU CELL



UNENCUMBERED SPACE:
60 SF

Double Cell Inmates
ACA requirements:
2 x 35 = 70 SF MIN. REQUIRED



UNENCUMBERED SPACE:
2624 SF

48 Inmates
ACA requirements:
48 x 35 = 1680 SF MIN. REQUIRED

MIKE DURFEE STATE PRISON - BARRACKS - DORM

DLR REPORT:

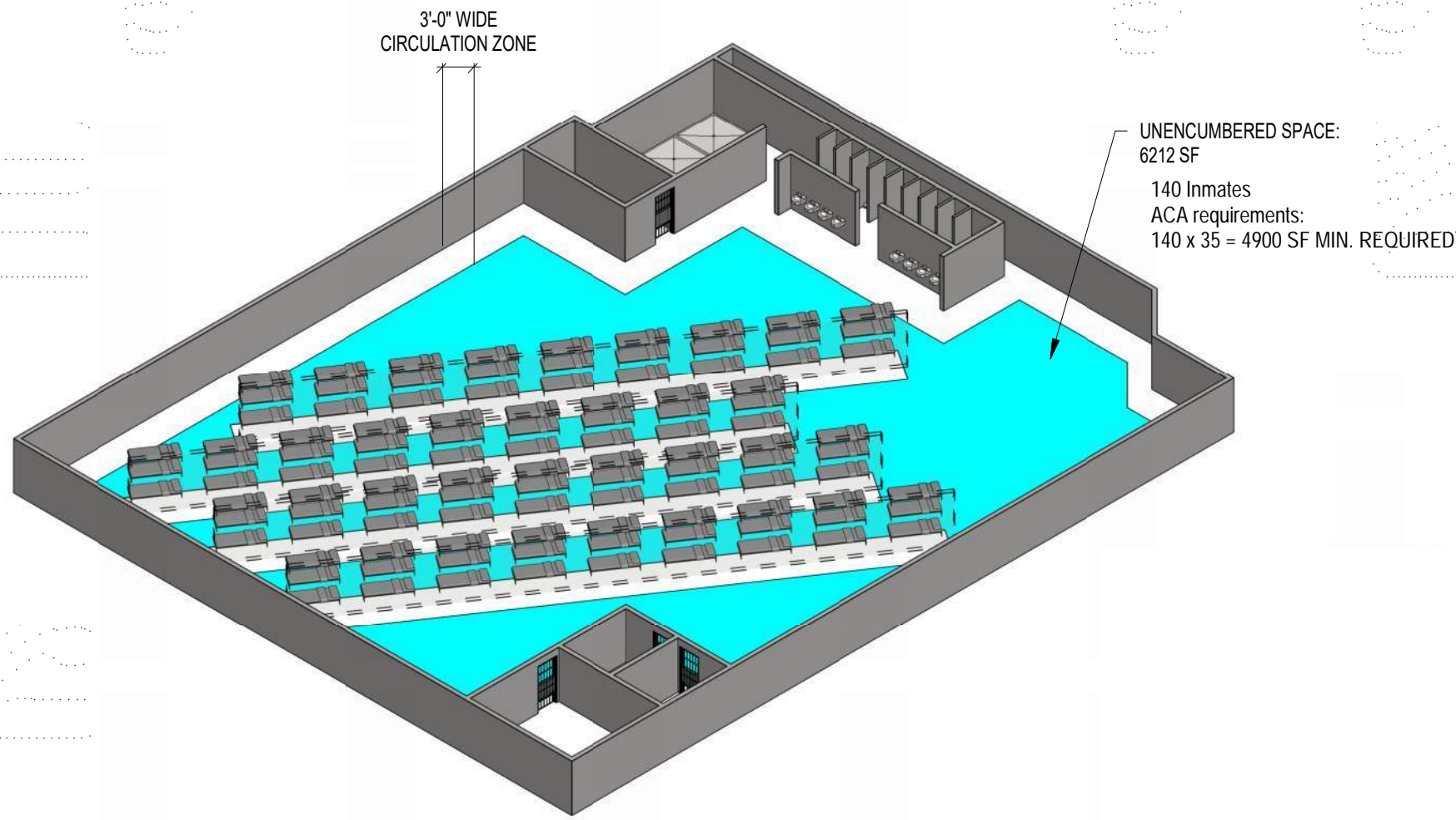
DESIGN CAPACITY:

- Barracks Building - 360 beds –
3 dormitory housing units
 - Unit B-1 – General Population - 140 beds
 - Unit B-2 – General population – 140 beds
 - Unit B-3 – Orientation, Medical, General Population - 80 beds
 - Special Housing Unit (not included in total capacity) -24 single cells

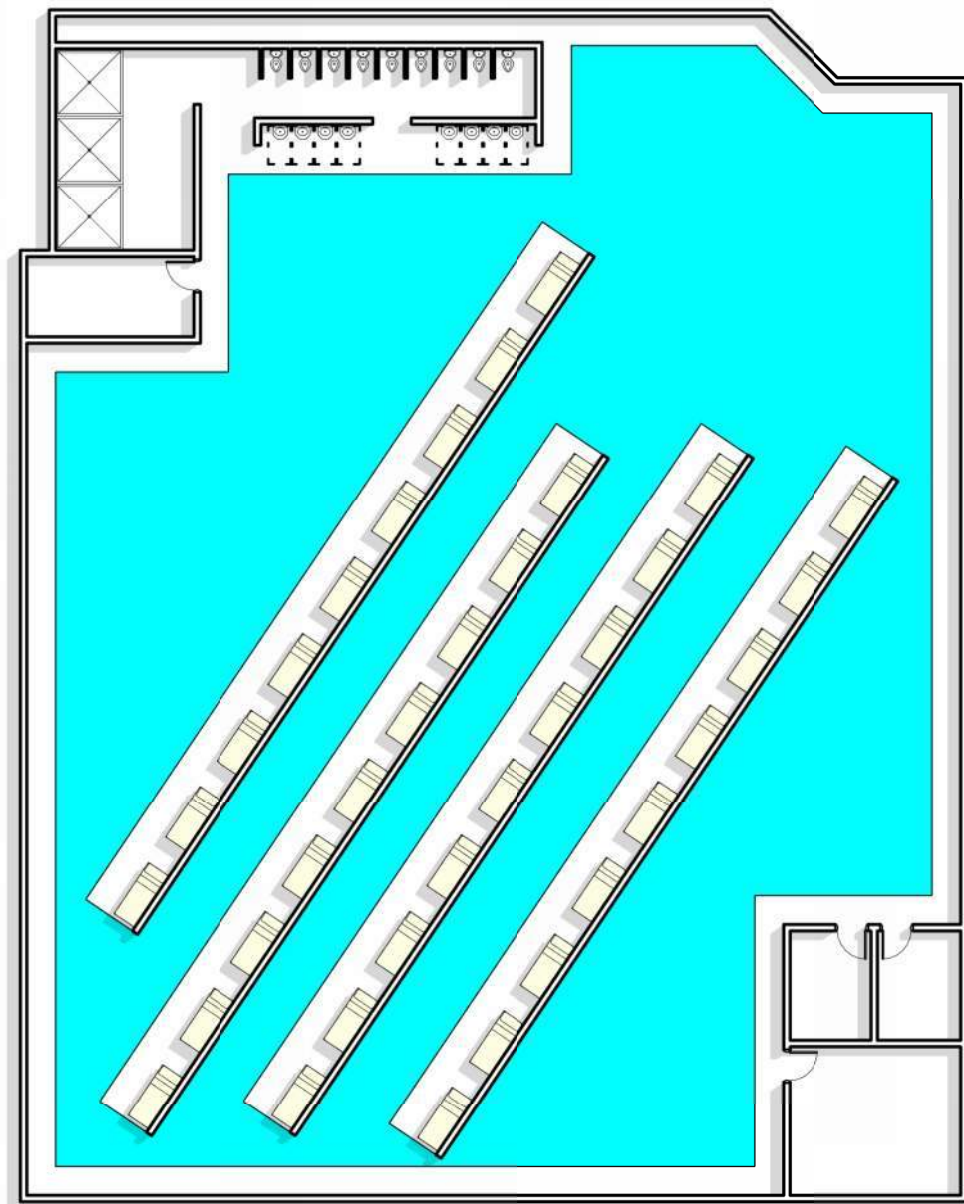
CURRENT OCCUPANCY:

Barracks Building – 367 (including SHU)

- MDSP houses inmates classified as low-medium security.
- The newest housing unit, referred to as “the Barracks” was built in 2004, with three open dormitory pods and a 24-cell high-security segregation unit (SHU). The housing unit current holds 360 inmates, in triple bunks, not including the SHU.
- There is one dormitory style housing unit (The Barracks) designated for arriving inmates while being assessed for a permanent housing assignment at the facility.
- All dormitory pods are triple-bunked and have a central toilet, lavatories, showers, and dayroom space. Inmates are provided with individual floor lockers and a movable footlocker/stool. Two manager offices and a multi-purpose room are provided in each housing pod.



DORM AREA



MIKE DURFEE STATE PRISON - CRAWFORD HALL - TYPICAL CELL

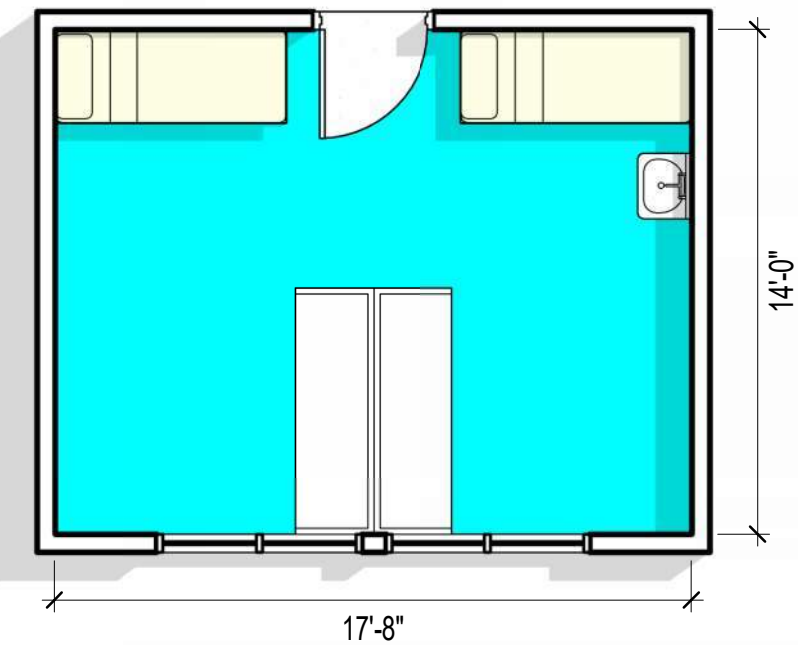
DLR REPORT:

DESIGN CAPACITY:

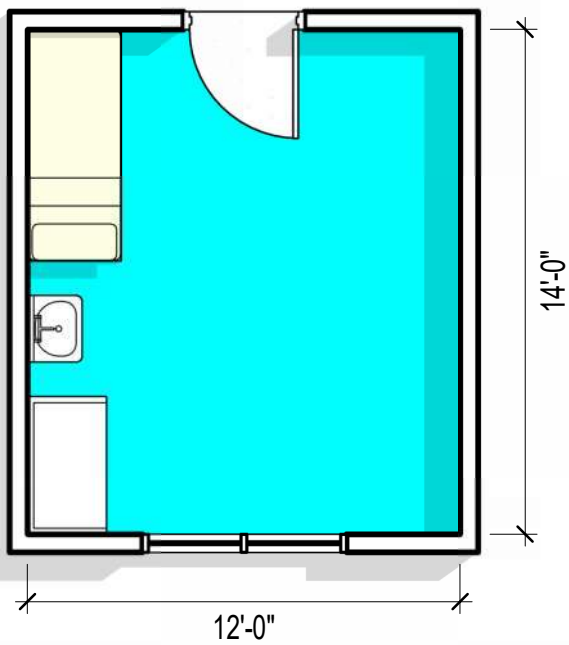
- Crawford Hall – 2 housing wings, three floors each - 50 beds per floor/wing – West Hall – 150 beds; East Hall - 150 beds - Total 300 beds
- Harmon Hall – 1 housing wing, 3 floors - 52 beds/floor - Total 159 beds
- Ludeman Hall – 1 housing wing, 3 floors - 48 beds/floor - Total 144 beds

CURRENT OCCUPANCY:

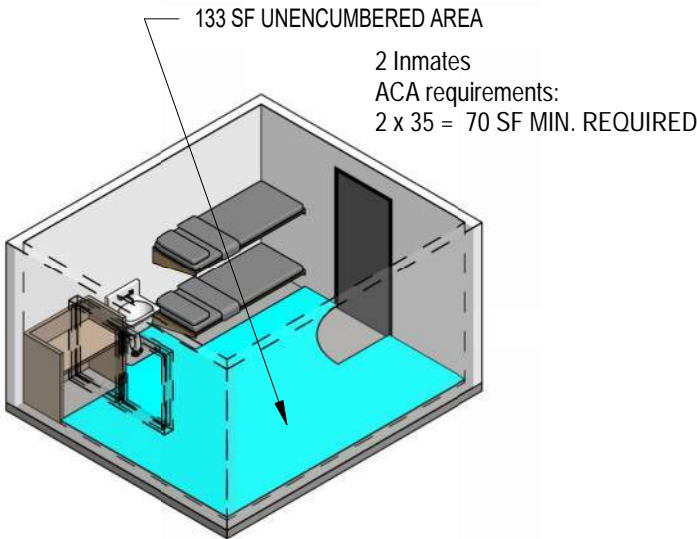
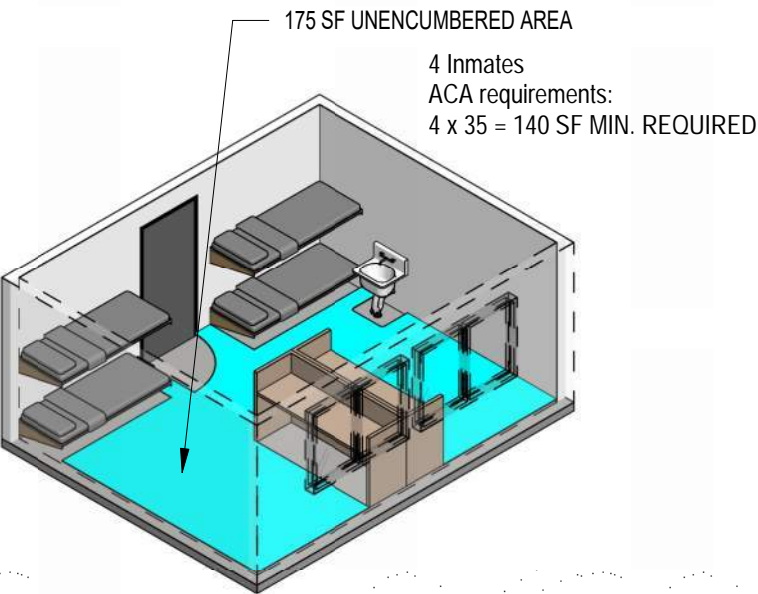
- Crawford Hall: West – 213; East – 212
- Harmon Hall – 216
- Ludeman – 0 (not currently in use)
- Infirmary – 1



**TYPICAL DORMITORY
FOUR BUNK**



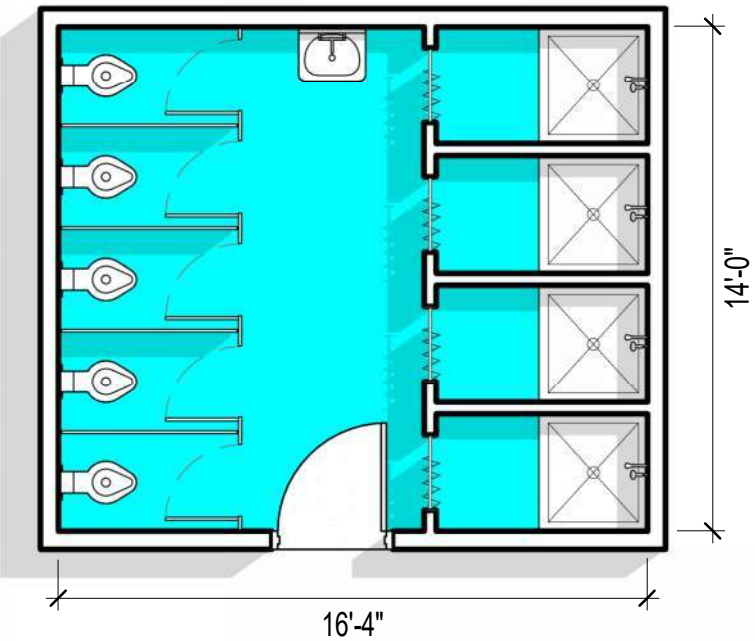
**TYPICAL DORMITORY
DOUBLE BUNK**



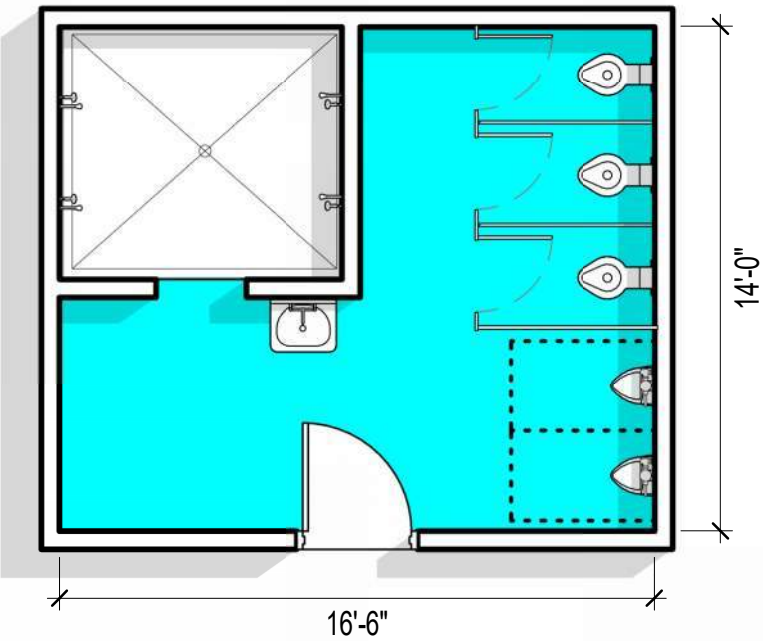
MIKE DURFEE STATE PRISON - LUDEMAN HALL - TYPICAL RESTROOM

DLR REPORT:

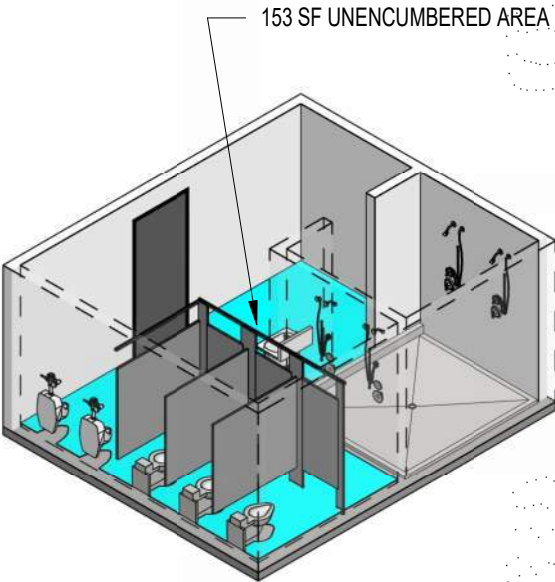
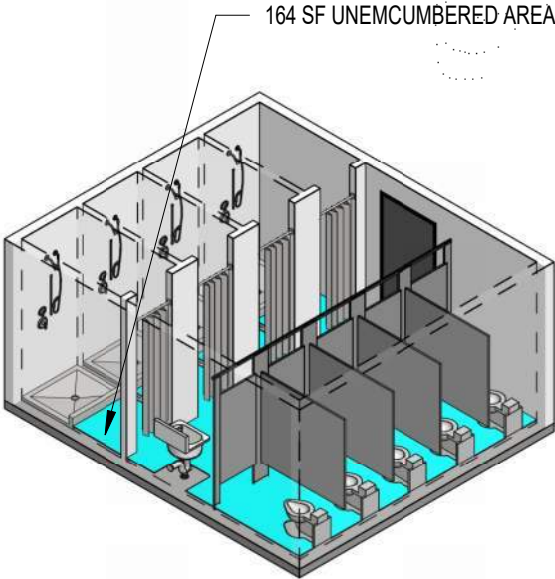
- The three inmate housing buildings, consisting of Crawford Hall (East and West wing), Harmon Hall, and Ludeman Hall. These housing units were originally built in the 1960's as dormitories for the university students.
- Central toilets, lavatories and shower rooms are located on each housing floor. The first floor has a staff station located at the entry to the housing unit. All these buildings have three floors of housing.
- The building construction is of residential quality and is not air conditioned.
- Staff supervision is via indirect management.



**DORMATORY
RESTROOM 1**



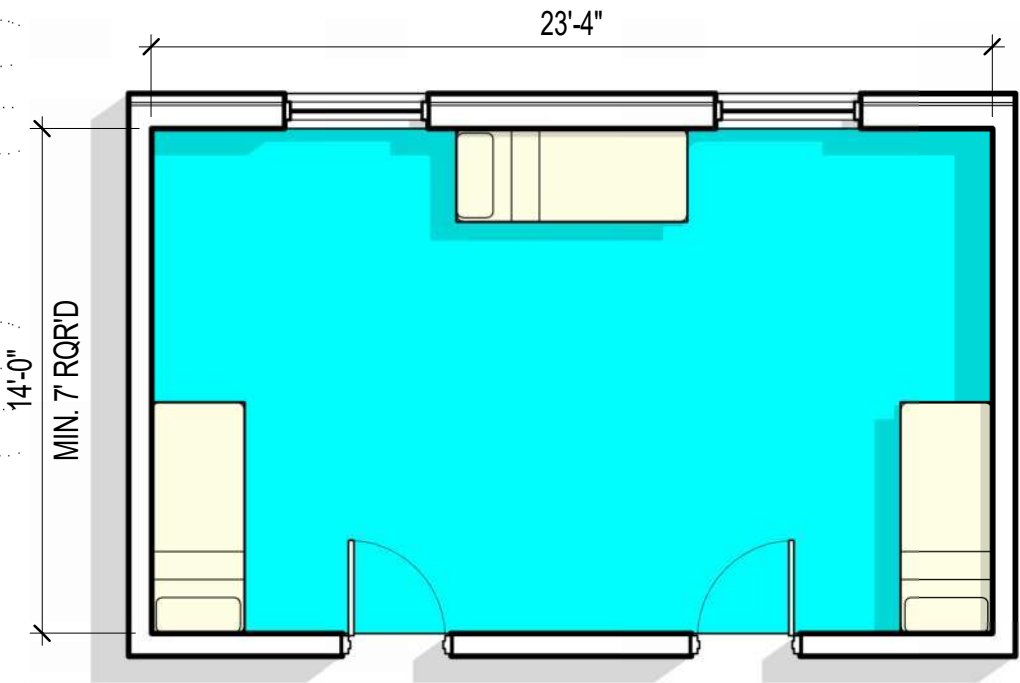
**DORMATORY
RESTROOM 2**



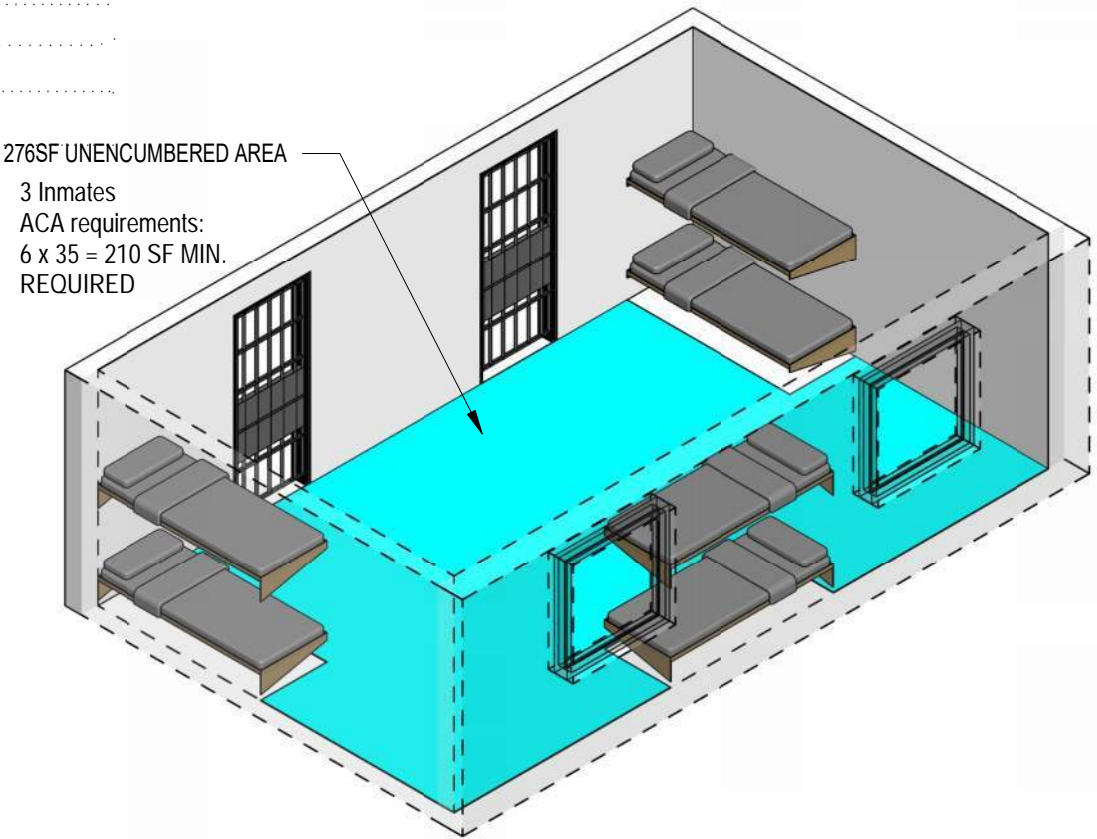
MIKE DURFEE STATE PRISON - HARMON HALL - TYPICAL CELL

DLR REPORT:

- Harmon Hall was designed as 1 housing wing, 3 floors - 52 beds/floor - Total 159 beds
- Harmon Hall has the current occupancy of 216 beds.
- There are three other inmate housing buildings, consisting of Crawford Hall (East and West wing), Harmon Hall, and Ludeman Hall. These housing units were originally built in the 1960's as dormitories for the university students.
- Harmon Hall has a high concentration of geriatric inmates or inmates with mobility issues
- The rooms vary in size, some with three beds in approximately 180 SF and some with six beds in approximately 320 SF.
- Central toilets, lavatories and shower rooms are located on each housing floor. The first floor has a staff station located at the entry to the housing unit. All these buildings have three floors of housing. The building construction is of residential quality and is not air conditioned. Staff supervision is via indirect management.
- The sleeping rooms are not locked, as inmates need access to the toilet facilities.
- There is no mention of furniture, bunk types, or any room modifications in the DLR.

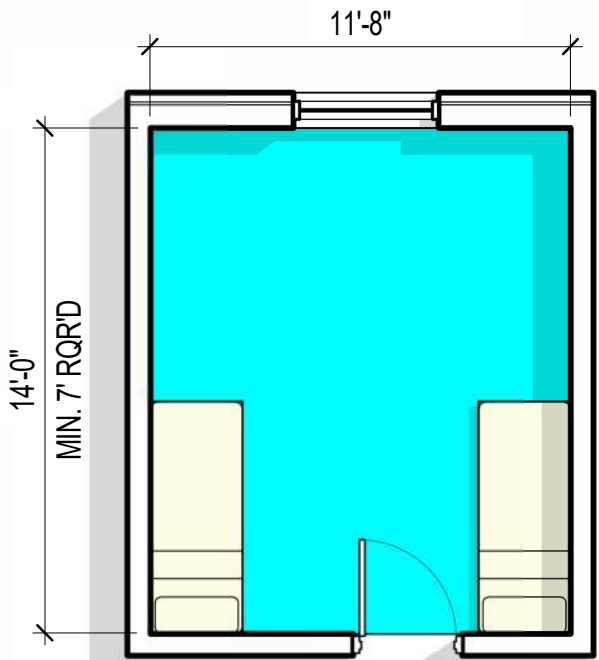
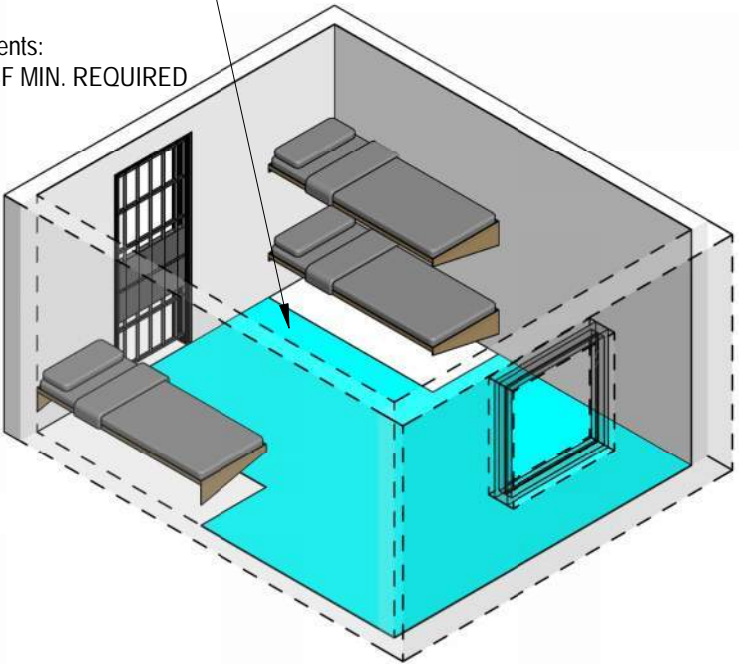


TYPICAL 6 BED DORM AREA



276SF UNENCUMBERED AREA
3 Inmates
ACA requirements:
6 x 35 = 210 SF MIN.
REQUIRED

130SF UNENCUMBERED AREA
3 Inmates
ACA requirements:
4 x 35 = 105 SF MIN. REQUIRED



TYPICAL 3 BED DORM AREA

MEN'S LEVEL V CORRECTIONAL NEW FACILITY

SPACE NEEDS SUMMARY

#	Component	Net SF	Grossing Factor	Gross SF
Admin & support	200 OUTSIDE ADMINISTRATION			
	200 Public Access to Visiting	1,435	1.40	2,009
	220 Warden	1,916	1.40	2,682
	221 Business Office / Human Resources	2,242	1.40	3,139
	227 Staff Support	3,780	1.40	5,292
	228 Armory	810	1.40	1,134
	222 Classification/Records	850	1.40	1,190
	229 Administration Building Support	1,428	1.40	1,999
	Total Outside Administration	12,461	1.40	17,445
Admin & support	240 INSIDE ADMINISTRATION & OPERATIONS			
	240 Institutional Operations	1,056	1.40	1,478
	241 Control	1,130	1.50	1,695
	242 Inside Administration	3,148	1.40	4,407
	244 Inside Admin & Ops Building Support	350	1.40	490
	Total Inside Administration & Operations	5,684	1.42	8,071
Admin & support	260 VISITING & HEARING SERVICES			
	260 Visiting	6,050	1.30	7,865
	261 Hearings/Parole Room	750	1.40	1,050
	262 Visiting & Hearings Building Support	670	1.40	938
	Total Visiting & Hearing Services	7,470	1.32	9,853
Housing	300 INTAKE			
	300 Intake	2,370	1.60	3,792
	Total Intake	2,370	1.60	3,792
Admin & support	410 HEALTH AND BEHAVIORAL HEALTH SERVICES			
	410 Medical	7,600	1.60	12,160
	411 Behavioral Health	1,370	1.50	2,055
	412 Dental	1,280	1.50	1,920
	413 Health Services Support	1,445	1.60	2,312
	420 Short Term Infirmary	3,350	1.60	5,360
	430 Health Services Building Support	400	1.40	560
	Total Clinical Services	15,445	1.58	24,367
Admin & support	460 FOOD SERVICE & LAUNDRY			
	460 Food Service	16,330	1.25	20,413
	461 Laundry	3,310	1.30	4,303
	462 Food Service & Laundry Building Support	850	1.30	1,105
	Total Food Service & Laundry	20,490	1.26	25,821

92,932 / 1,372 = 68 SF per inmate

213,454/ 1,372 = 155 SF per inmate

59,244 / 1,372 = 43 SF per inmate

SPACE NEEDS SUMMARY (continued)

Program	500 EDUCATION			
	531 Academic Education	8,480	1.35	11,448
	533 Education Administration	890	1.35	1,202
	540 Programs / Religious	4,784	1.35	6,458
	560 Library	1,040	1.35	1,404
	532 Vocational Education	20,620	1.35	27,837
	534 Education/Vocational Building Support	910	1.35	1,229
	570 State Industries	9,840	1.20	11,808
	572 SI Building Support	700	1.20	840
	Total Education	47,264	1.32	62,225
Program?	540 RECREATION / MULTI-PURPOSE			
	540 Recreation	11,440	1.35	15,444
	563 Programs Building Support	540	1.40	756
	Total Recreation / Multi-Purpose	11,980	1.35	16,200
Housing	600 HOUSING			
	620 High Medium Security Housing Unit	81,480	1.60	130,368
	630 Low Medium Security Housing Unit	73,692	1.60	117,907
	640 Assisted Living Housing	19,861	1.60	31,778
	650 BH/MH Housing Unit	20,745	1.60	33,192
	670 SHU Housing Unit	15,306	1.60	24,490
	Total Housing	211,084	1.60	337,734
Admin & support	700 FACILITY SERVICES			
	710 Warehouse (Outside)	14,806	1.20	17,767
	720 Maintenance (Inside)	7,446	1.30	9,680
	730 Warehouse/Maintenance Building Support	1,060	1.30	1,378
	740 Gatehouse	390	1.20	468
	750 Central Energy Plant	7,680	1.20	9,216
	Total Facility Services	31,382	1.23	38,509
TOTAL FACILITY BUILDING SQUARE FOOTAGE		365,630	1.49	544,017

HOUSING SUMMARY

Housing Summary - Rated Beds	Occupancy	# Cells	# pods	# Beds
High Medium	2	32	10	640
Low Medium	2	32	9	576
Low Medium (minimums integrated into LM housing)	2	6	1	12
Assisted Living Housing	1.5	24	2	72
Behavioral/Mental Health	1.5	24	2	72
Total Beds				1,372
SHU Beds (not in rated capacity)				76

Square Footage Summary

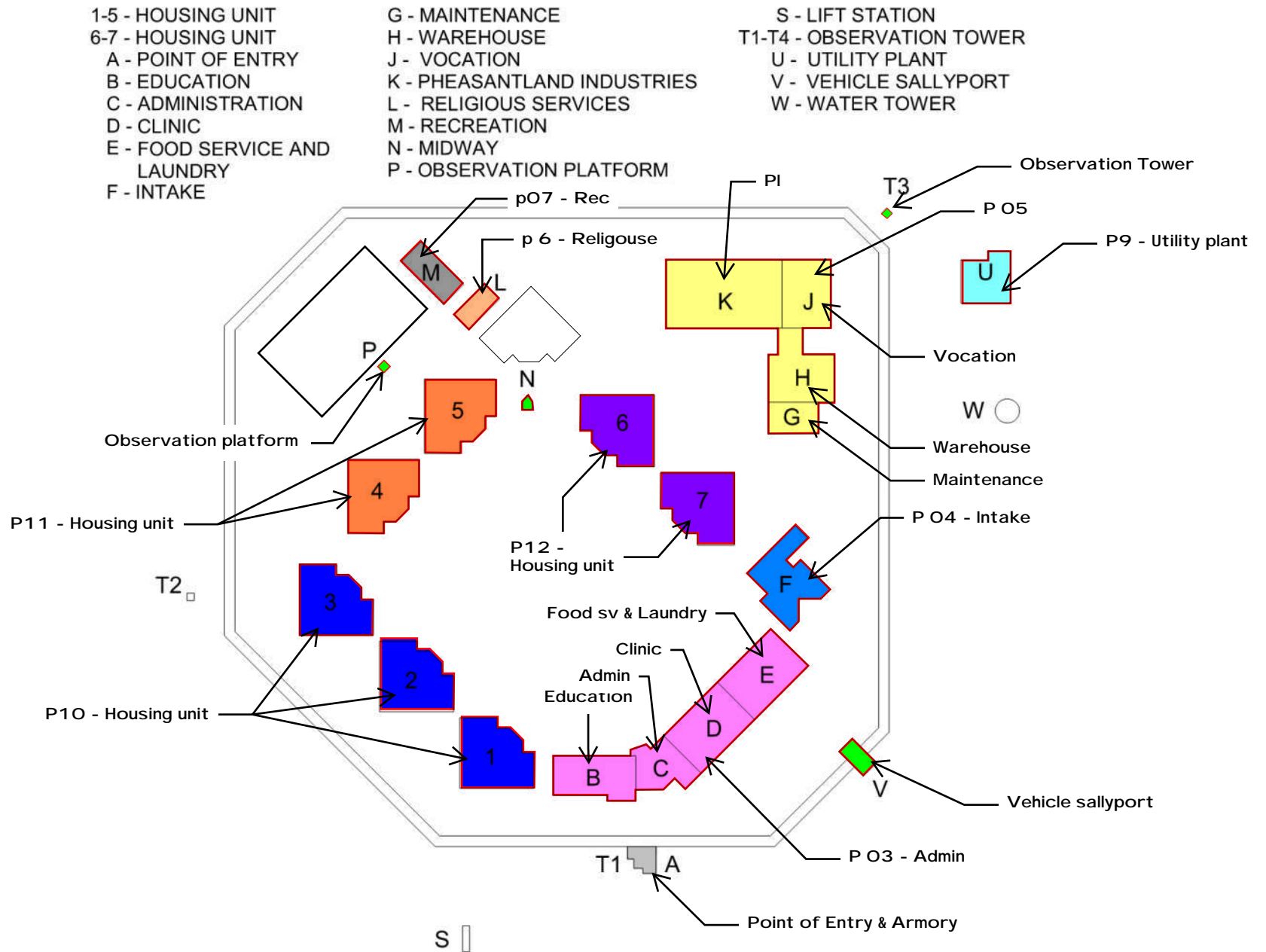
SPACE	PROGRAM SF	CURRENT SF	DIFFERENCE	COMMENTS
A - Point of Entry / Armory	3,241	5,667	2,426	Includes 1 Observation Tower
B- Programs / Services / Admin.	116,977	124,037	7,060	
Education	20,657	16,346	(4,311)	
Visitation	10,467	8,513	(1,954)	
Admin / Operations	23,860	24,927	1,067	
Health / Behavioral Health	24,513	28,186	3,673	
Food Service / Laundry	33,821	34,836	1,015	Includes 1500 SF reduction as a placeholder (not shown on plan)
Multipurpose	3,659	1,849	(1,810)	
Penthouse		9,380		
C-J Housing	352,953	367,456	14,503	
General Population Housing		260,130		5 Units
Step Down Restrictive Housing		52,026		1 Unit - Does not include SF for the attached outdoor rec
Extended Restrictive Housing		55,300		1 Unit - Does not include SF for the attached outdoor rec
K - Intake / AO Housing	37,501	40,083	2,582	
Intake	12,071	8,655	(3,416)	
AO Housing	25,430	29,465	4,035	
Penthouse		1,963		
L - Recreation	19,377	17,031	(2,346)	Barber Shop Added Includes 1500 SF Penthouse
M - Religion	5,292	8,400	3,108	Chapel was originally programmed at 800 SF Includes 880 SF Penthouse
N - Industries	168,603	143,128	(25,475)	
Maintenance	13,864	13,050	(814)	
Warehouse	32,483	25,650	(6,833)	
Loading Dock Link	7,380	5,624	(1,756)	
Private Industries	44,928	28,500	(16,428)	25,000 shop space
Pheasantland Industries	69,948	64,680	(5,268)	
Penthouse		5,624		
P - Central Utility Plant	9,216	24,251	15,035	Dependent on Final System Selection / Sizing
Q - Observation Towers	2,520	1,645	(875)	5 towers at 329 SF
Vehicle Sally Port		90	90	
Gatehouse	468	-	(468)	
TOTAL OF NON-HOUSING USES	337,765	334,867	(2,898)	-0.86%
TOTAL HOUSING	378,383	396,921	18,538	4.90%
TOTAL SQUARE FEET	716,148	731,788	15,640	2.18%

Admin & support 107,691 / 1,584 = 68 sq SF per inmate

Housing 186,754 / 1,584 = 258 sq SF per inmate

Program 184,905 / 1,584 = 116 sq SF per inmate

KEY PLAN



ACA STANDARDS - CELL

Single-Occupancy Cells

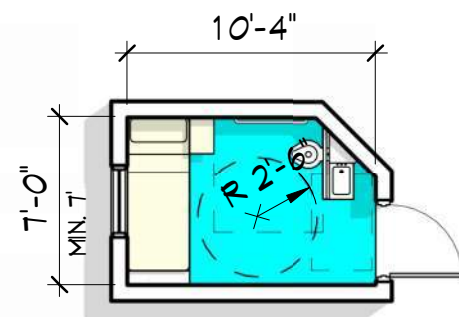
5-ALDF-1A-08
(Ref. 4-ALDF-1A-09) Single cells in general population provide at least 35 square feet of unencumbered space. At least 70 square feet of total floor space is provided when the occupant is confined for more than 10 hours per day.

Comment: Unencumbered space is usable space that is not encumbered by furnishings or fixtures. At least one dimension of the unencumbered space is no less than seven feet. In determining the unencumbered space, the total square footage is obtained and the square footage of the fixtures is subtracted. All fixtures must be in operational position for these calculations.

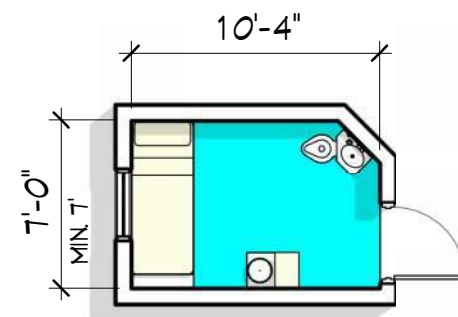
Multiple-Occupancy Rooms/Cells

5-ALDF-1A-09
(Ref. 4-ALDF-1A-10) Multiple-occupancy rooms/cells house between two and 64 occupants and provide 25 square feet of unencumbered space per occupant. When confinement exceeds 10 hours per day, at least 35 square feet of unencumbered space is provided for each occupant.

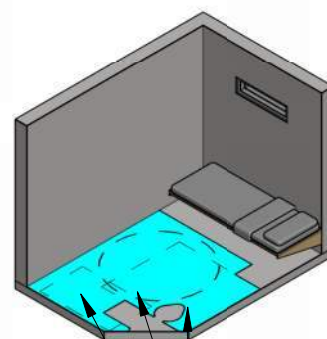
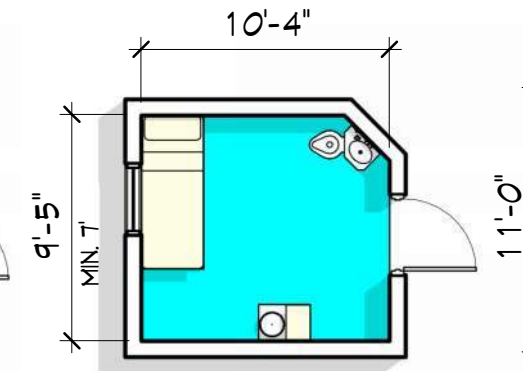
SINGLE CELL - ADA



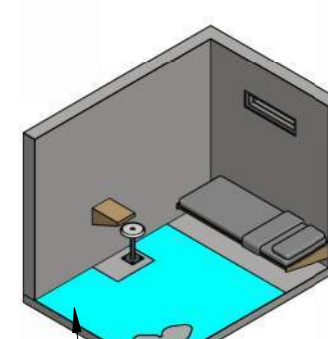
SINGLE CELL



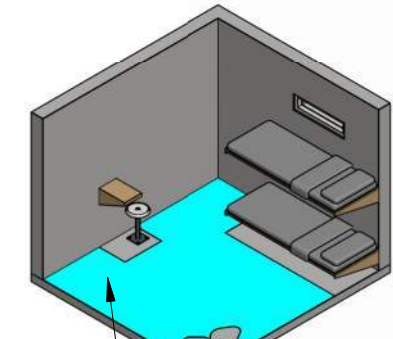
DOUBLE CELL



UNENCUMBERED SPACE:
35 SF (RQR'D)
5' DIA. CLEAR SPACE
CLEAR SPACE FOR
LAVATORY ACCESS



UNENCUMBERED SPACE:
35 SF (RQR'D)



UNENCUMBERED SPACE FOR
CONFINEMENT OVER 10 HOURS:
70 SF (RQR'D)

MEN'S LEVEL V CORRECTIONAL FACILITY - HOUSING UNITS

DLR REPORT:

600	HOUSING			
620	High Medium Security Housing Unit	81,480	1.60	130,368
630	Low Medium Security Housing Unit	73,692	1.60	117,907
640	Assisted Living Housing	19,861	1.60	31,778
650	BH/MH Housing Unit	20,745	1.60	33,192
670	SHU Housing Unit	15,306	1.60	24,490
	Total Housing	211,084	1.60	337,734

HOUSING SUMMARY

Housing Summary - Rated Beds	Occupancy	# Cells	# pods	# Beds
High Medium	2	32	10	640
Low Medium	2	32	9	576
Low Medium (minimums integrated into LM housing)	2	6	1	12
Assisted Living Housing	1.5	24	2	72
Behavioral/Mental Health	1.5	24	2	72
			Total Beds	1,372
SHU Beds (not in rated capacity)				76

DESIGN DRAWINGS:

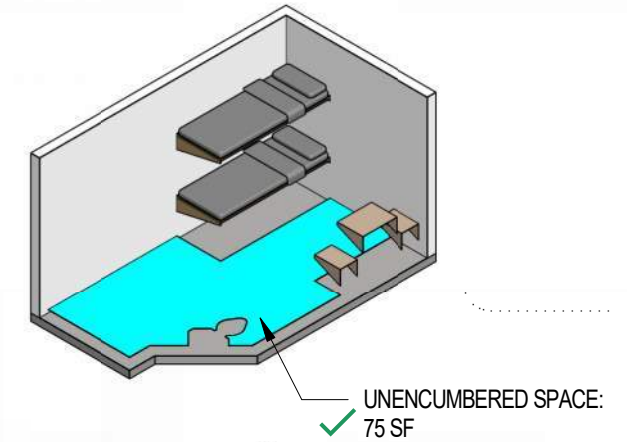
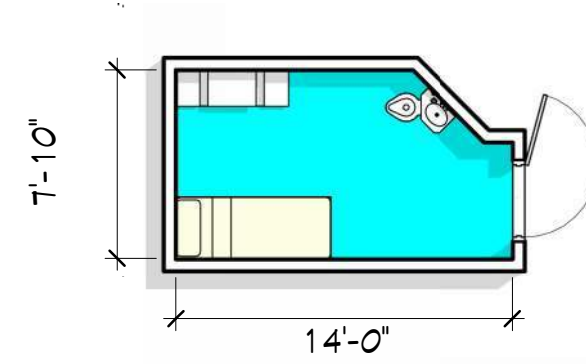
PROJECT DESCRIPTION:

THE PROJECT IS A 1,512 BED LEVEL V SECURITY FACILITY LOCATED IN LINCOLN COUNTY, SOUTH DAKOTA. THE OVERALL SITE CONSISTS OF SITE DEVELOPMENT AND 18 BUILDINGS/STRUCTURES. SITE DEVELOPMENT INCLUDES THE NECESSARY UTILITIES TO SUPPORT THE FACILITIES, HARDSCAPE/LANDSCAPE, PARKING, PERIMETER ROAD, CONSTRUCTION SITE SECURITY AND UTILITY IMPROVEMENTS FROM THE PROPERTY BOUNDARY TO SUPPORT THE CAMPUS.

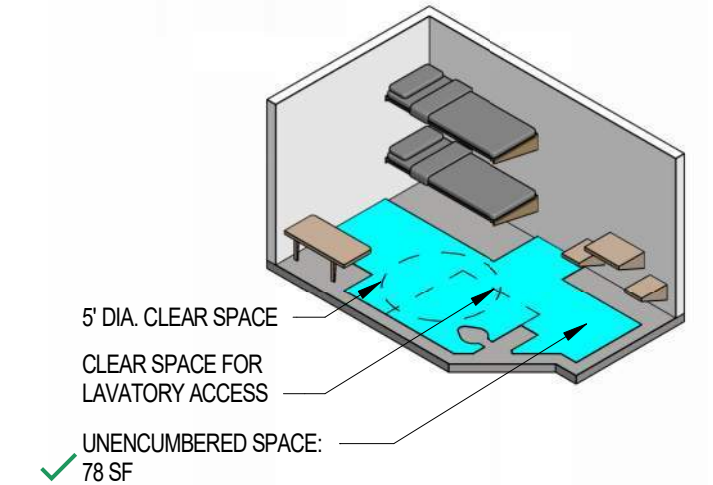
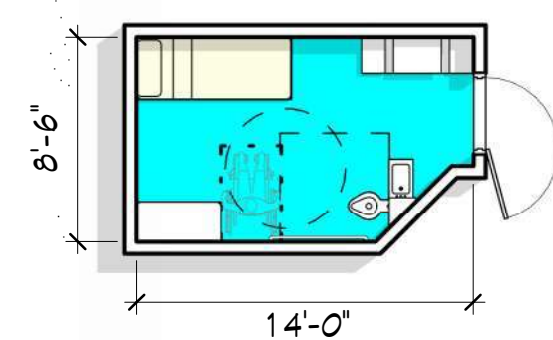
HDR PROGRAM SUMMARY:

C-J Housing	352,953	367,456	14,503	
General Population Housing		260,130		5 Units
Step Down Restrictive Housing		52,026		1 Unit - Does not include SF for the attached outdoor rec
Extended Restrictive Housing		55,300		1 Unit - Does not include SF for the attached outdoor rec

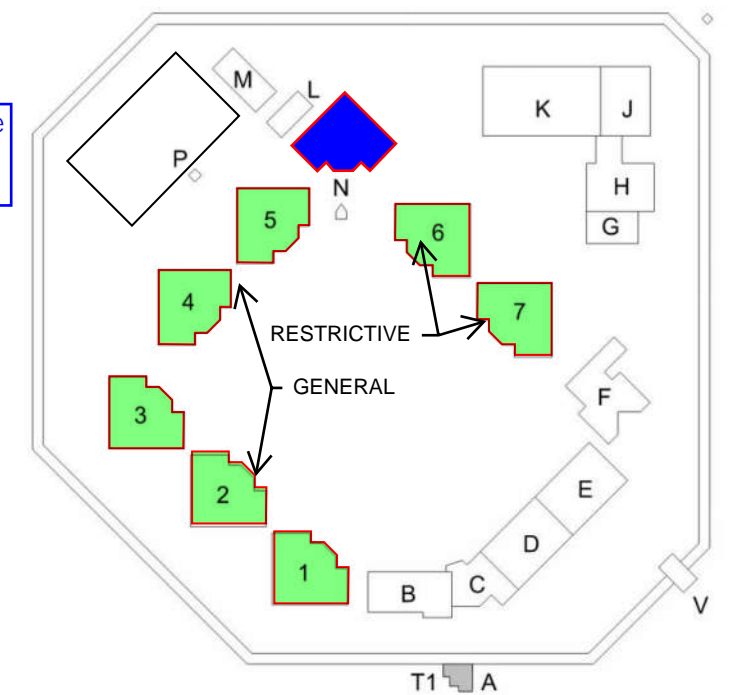
HOUSING UNIT - DOUBLE CELL



HOUSING UNIT -ADA CELL



2025 Masterplan Recommendation to include future 216 beds now. Bringing this facility to 1728 beds.



MEN'S LEVEL V CORRECTIONAL FACILITY - BUILDING F - INTAKE

DESIGN DRAWINGS:

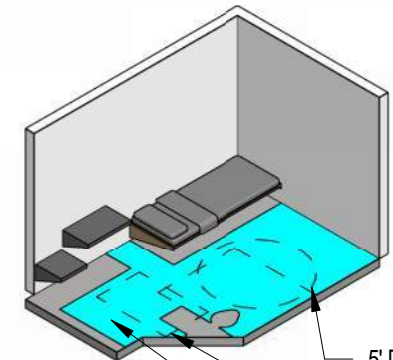
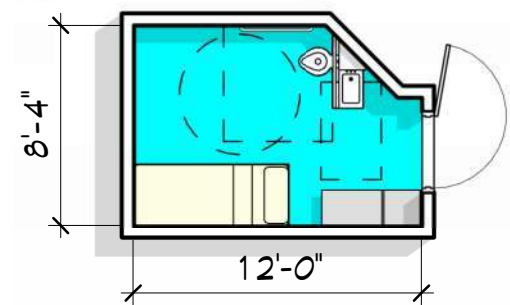
PROJECT DESCRIPTION:

THE PROJECT IS A 1,512 BED LEVEL V SECURITY FACILITY LOCATED IN LINCOLN COUNTY, SOUTH DAKOTA. THE OVERALL SITE CONSISTS OF SITE DEVELOPMENT AND 18 BUILDINGS/STRUCTURES. SITE DEVELOPMENT INCLUDES THE NECESSARY UTILITIES TO SUPPORT THE FACILITIES, HARDSCAPE/LANDSCAPE, PARKING, PERIMETER ROAD, CONSTRUCTION SITE SECURITY AND UTILITY IMPROVEMENTS FROM THE PROPERTY BOUNDARY TO SUPPORT THE CAMPUS.

DESIGN PROGRAM SUMMARY:

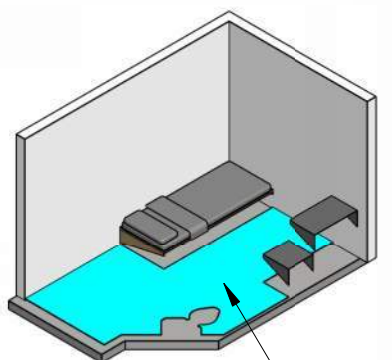
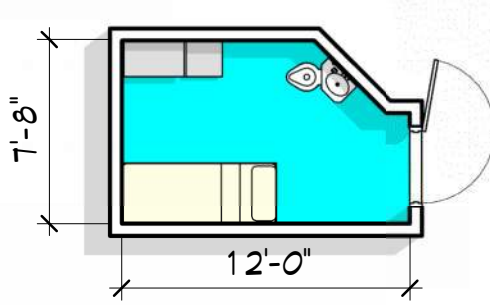
K - Intake / AO Housing	37,501	40,083	2,582
Intake	12,071	8,655	(3,416)
AO Housing	25,430	29,465	4,035
Penthouse		1,963	

BUILDING F - SINGLE CELL ADA



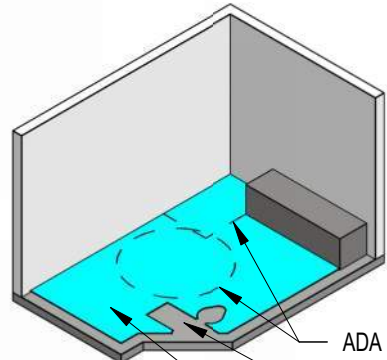
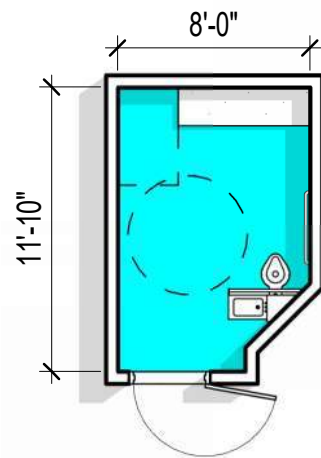
5' DIA. CLEAR SPACE
CLEAR SPACE FOR LAVATORY ACCESS
UNENCUMBERED SPACE: 65 SF

BUILDING F - SINGLE CELL



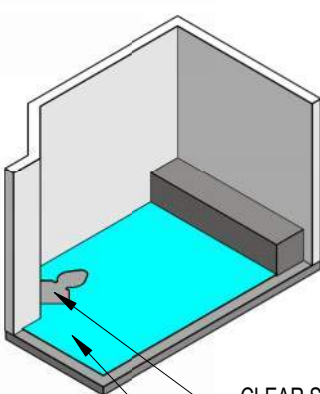
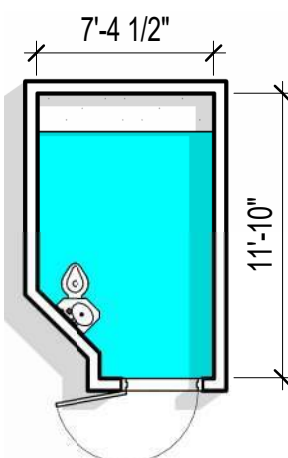
UNENCUMBERED SPACE: 59 SF

PROCESSING ADA SINGLE CELL



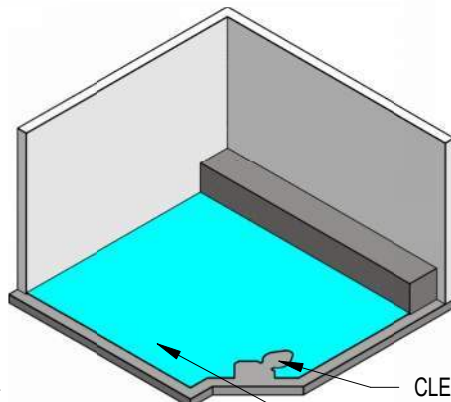
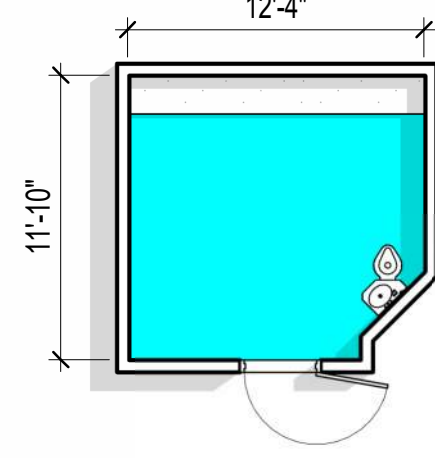
ADA CLEAR SPACE
CLEAR SPACE FOR LAVATORY ACCESS
UNENCUMBERED SPACE: 75 SF

PROCESSING SINGLE CELL



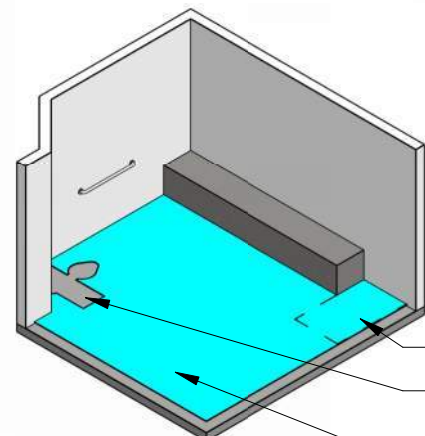
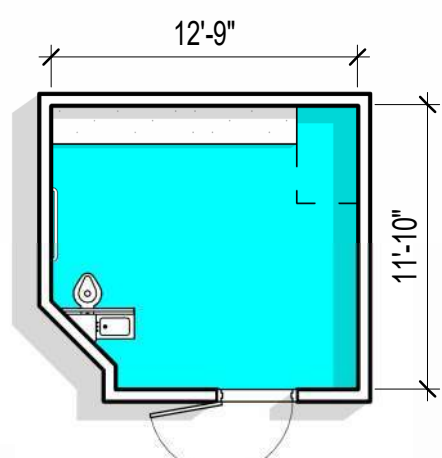
CLEAR SPACE FOR LAVATORY ACCESS
UNENCUMBERED SPACE: 66 SF

PROCESSING WET DBL CELL

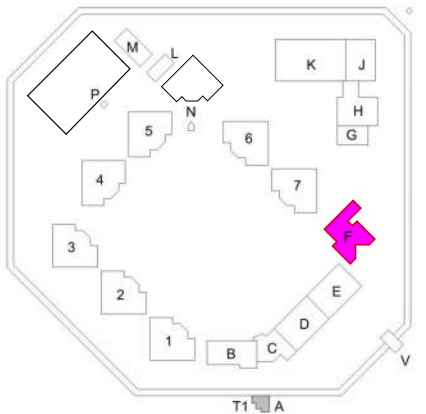


CLEAR SPACE FOR LAVATORY ACCESS
UNENCUMBERED SPACE: 117 SF

PROCESSING ADA WET DBL CELL



ADA CLEAR SPACE
CLEAR SPACE FOR LAVATORY ACCESS
UNENCUMBERED SPACE: 124 SF



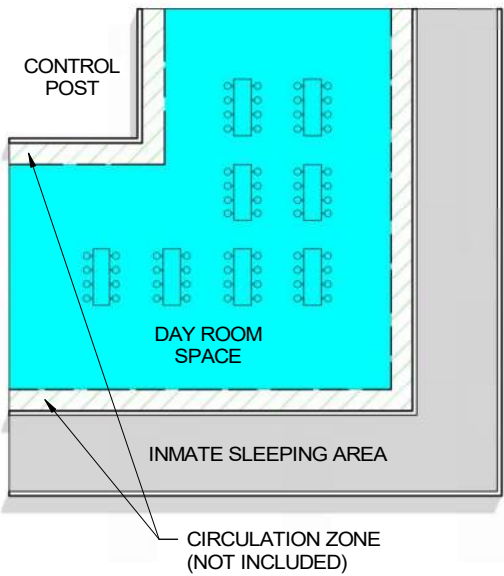
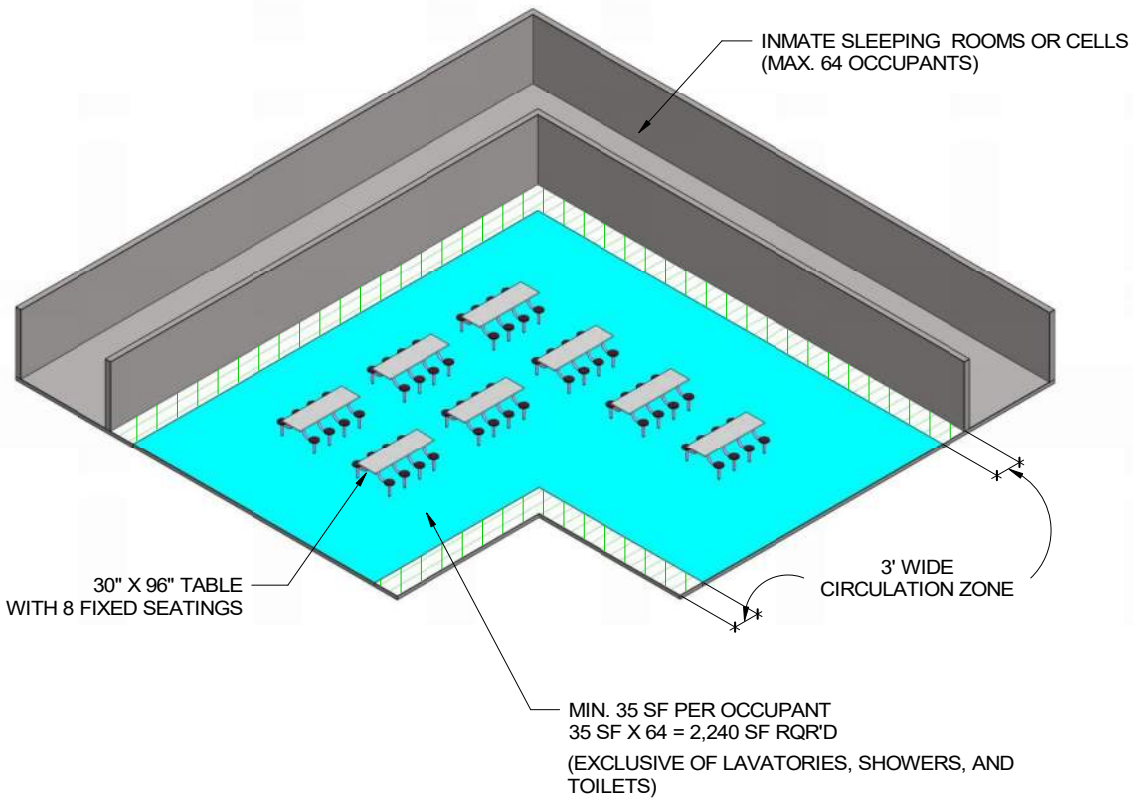
STATE OF SOUTH DAKOTA DEPARTMENT OF CORRECTIONS
MEN'S LEVEL V CORRECTIONAL FACILITY

ACA STANDARDS:

Dayrooms

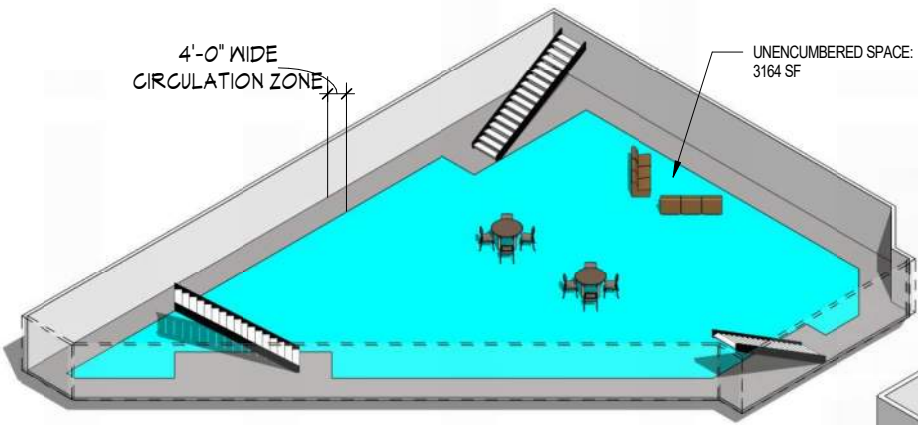
5-ALDF-1A-11
(Ref. 4-ALDF-1A-12)

Dayrooms with space for varied inmate activities are situated immediately adjacent to inmate sleeping areas. Dayrooms provide a minimum of 35 square feet of space per inmate (exclusive of lavatories, showers, and toilets) for the maximum number of inmates who use the dayroom at one time. No dayroom encompasses less than 100 square feet of space, exclusive of lavatories, showers, and toilets.



TYPICAL DAY ROOM

DESIGN DRAWINGS :



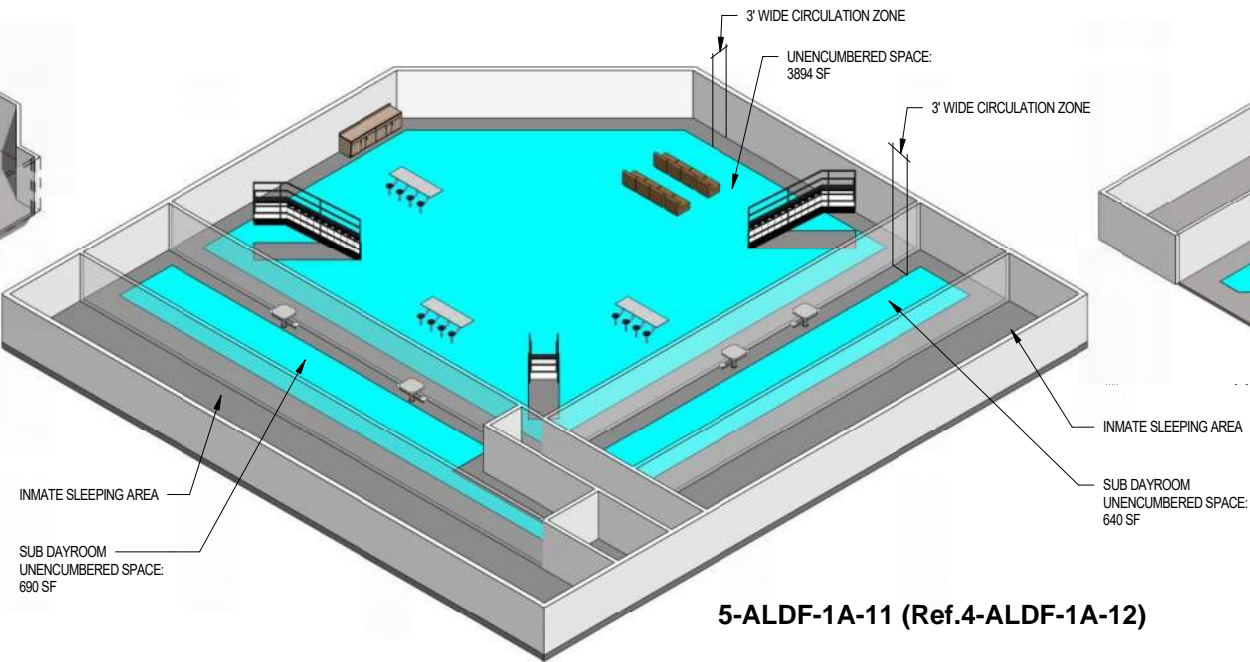
5-ALDF-1A-11 (Ref.4-ALDF-1A-12)

18*2 = 36 inmates (total) (Single cell)

36*35sf= ACA requires min. 1,260 SF

3164 SF > 1,260 SF REQ.

BUILDING F - INTAKE



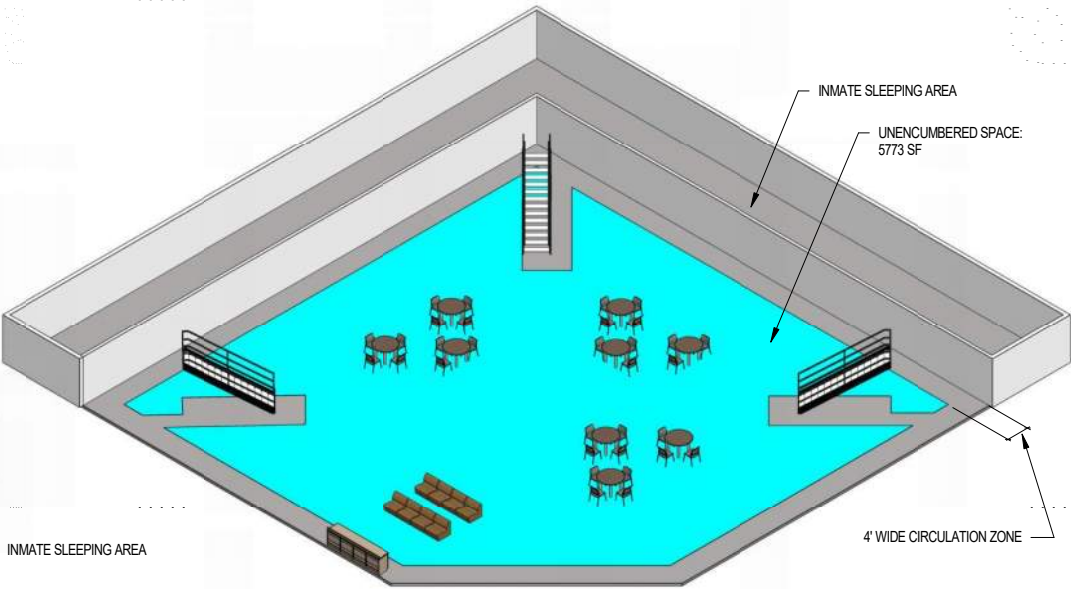
5-ALDF-1A-11 (Ref.4-ALDF-1A-12)

36*2 = 72 inmates (total) (Double cell)

72*35sf= ACA requires min. 2,520 SF

5224 SF > 2,520 SF REQ.

HOUSING UNITS



5-ALDF-1A-11 (Ref.4-ALDF-1A-12)

36*2 = 72 inmates (total) (Double cell)

72*35sf= ACA requires min. 2,520 SF

5773 SF > 2,520 SF REQ.

HOUSING UNITS

ACA STANDARDS - RECREATION

Exercise and Recreation

- 5-ALDF-5C-01
(Ref. 4-ALDF-5C-01)

Inmates have access to exercise opportunities and equipment, including at least one-hour daily of physical exercise outside the cell, and outdoors, when weather permits.
- 5-ALDF-5C-02
(Ref. 4-ALDF-5C-02)

Inmates have opportunities to participate in leisure-time activities outside their respective cell or room on a daily basis.
- 5-ALDF-5C-03
(Ref. 4-ALDF-5C-03)

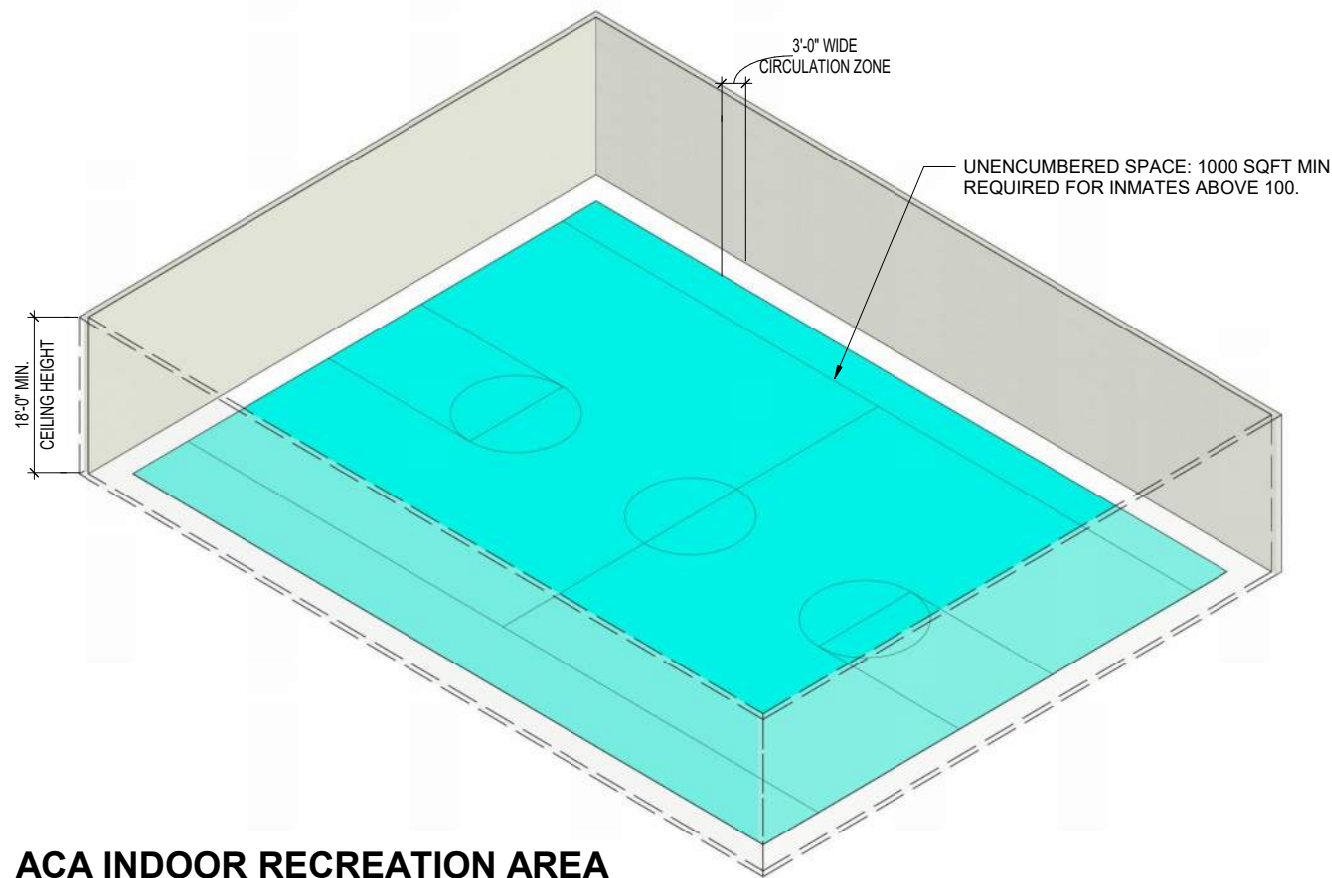
Both outdoor and covered/enclosed exercise areas for general population inmates are provided in sufficient number to ensure each inmate is offered at least one hour of access daily. Use of outdoor areas is preferred, but covered/enclosed areas must be available for use in inclement weather. Covered/enclosed areas can be designed for multiple uses as long as the design and furnishings do not interfere with scheduled exercise activities. The minimum space requirements for exercise areas are as follow:

 - Outdoor exercise areas in facilities where 100 or more inmates utilize one recreation area—15 square feet per inmate for the maximum number of inmates expected to use the space at one time, but not less than 1,500 square feet of unencumbered space.
 - Outdoor exercise areas in facilities where less than 100 inmates utilize one recreation area—15 square feet per inmate for the maximum number of inmates expected to use the space at one time, but not less than 750 square feet of unencumbered space.
 - Covered/enclosed exercise areas in facilities where 100 or more inmates utilize one recreation area have 15 square feet per inmate for the maximum number of inmates expected to use the space at one time, with a minimum ceiling height of 18 feet, but not less than 1,000 square feet of unencumbered space.
 - Covered/enclosed exercise areas in facilities where less than 100 inmates utilize one recreation area have 15 square feet per inmate for the maximum number of inmates expected to use the space at one time, with a minimum ceiling height of 18 feet, but not less than 500 square feet of unencumbered space.
- 5-ALDF-5C-04
(Ref. 4-ALDF-5C-04)

Special management and restrictive housing units have either outdoor uncovered or outdoor covered exercise areas. The minimum space requirements for outdoor exercise areas are as follows:

 - Group areas: 330-square feet of unencumbered space can accommodate two inmates. For each additional 150-square feet of unencumbered space, an additional inmate may use the exercise area simultaneously. (Formula: for each 150 square feet of unencumbered space exceeding the base requirement of 180 square feet for the first inmate, equals the maximum number of inmates who may use the recreation space simultaneously).
 - Individual areas: 180 square feet of unencumbered space.

In cases where cover is not provided to mitigate inclement weather, appropriate weather-related equipment and attire should be made available to inmates who desire to take advantage of their authorized exercise time.



ACA INDOOR RECREATION AREA

STATE OF SOUTH DAKOTA DEPARTMENT OF CORRECTIONS
MEN'S LEVEL V CORRECTIONAL FACILITY

RESTRICTIVE HOUSING UNITS

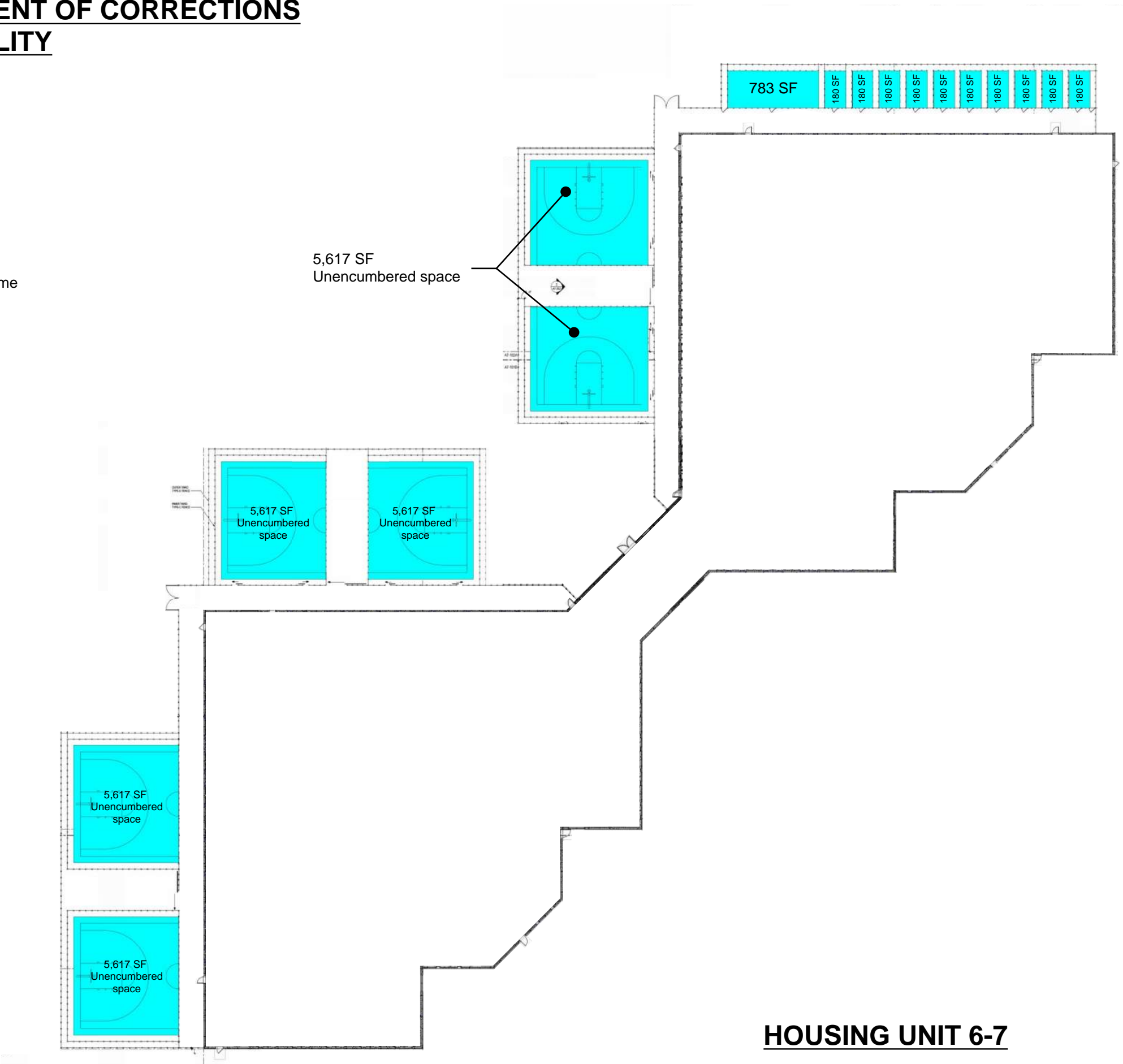
5-ALDF-5C-04 (Ref.4-ALDF-5C-04)

restrictive housing

18(cells) x 2 (double bunk) x 2 = 72 inmates per pod
72 x 3 (pod) = 216 inmates per housing units

2+(5,616sf-330sf / 150sf) = 37 inmates can use the area at the same time

2+(783sf-330sf / 150sf) = 5 inmates can use the area at the same time



STATE OF SOUTH DAKOTA DEPARTMENT OF CORRECTIONS
MEN'S LEVEL V CORRECTIONAL FACILITY

RECREATION BUILDING

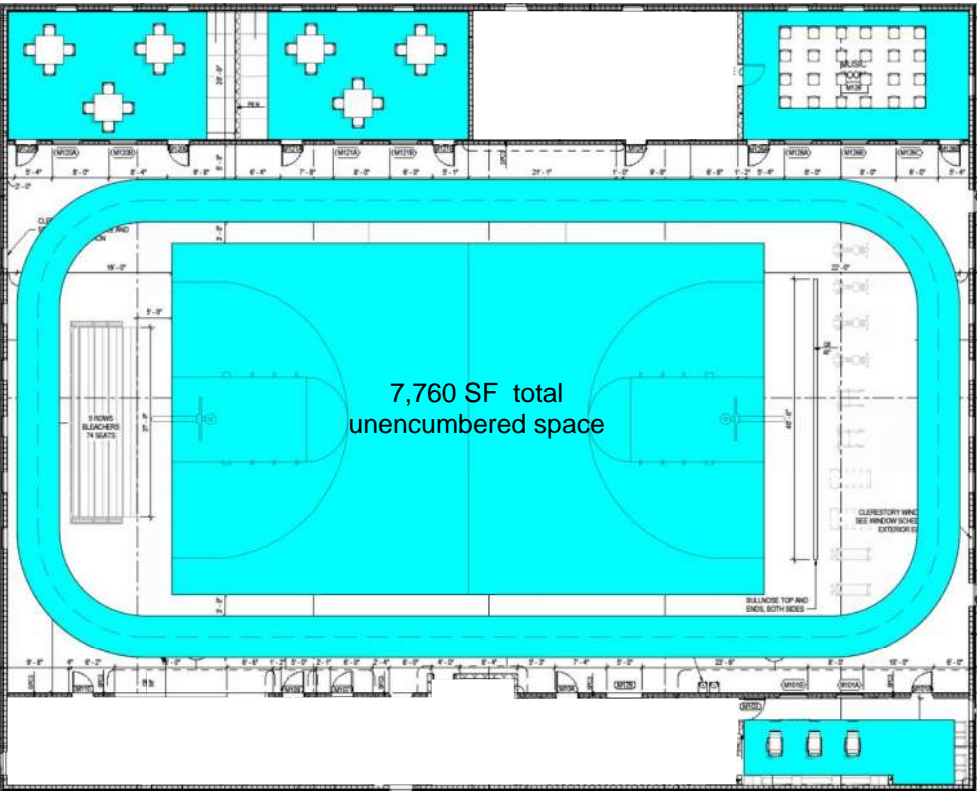
5-ALDF-5C-03
(Ref.4-ALDF-5C-03)

housing 1-3= 648 inmates
housing 4-5= 216 inmates
Total= 864 inmates

864*15SF = 12,960 SF Req. if all using the space at the same time

648*15SF = 9,720 SF Req. if inmates in housing 1-3 uses space at the same time.
216*15SF = 3,240 SF Req. if inmates in housing 4-5 uses space at the same time.

Min. Ceiling height of 18' required and no less than 1,000 SF of unencumbered space if
+100inmates are using space at the same time



BUILDING F - INTAKE

5-ALDF-5C-03 (Ref.4-ALDF-5C-03)

36*2 = 72 inmates (total)

72*15sf= 1,080 sf required

1506SF of unencumbered area per BLDG F plans

ACA requires min. 750 SF

1506SF > 1500SF REQ.

