

**South Dakota Board of  
Vocational Rehabilitation**

Indicator 14 Post School  
Outcomes

Data for 2023 graduates  
Presented June 26<sup>th</sup>, 2025

**Dr. Faye LaDuke-Pelster**

Professor & Department Chair, School of Education  
Black Hills State University

**Lori Kwasniewski**

Transition Program Specialist

Special Education Programs

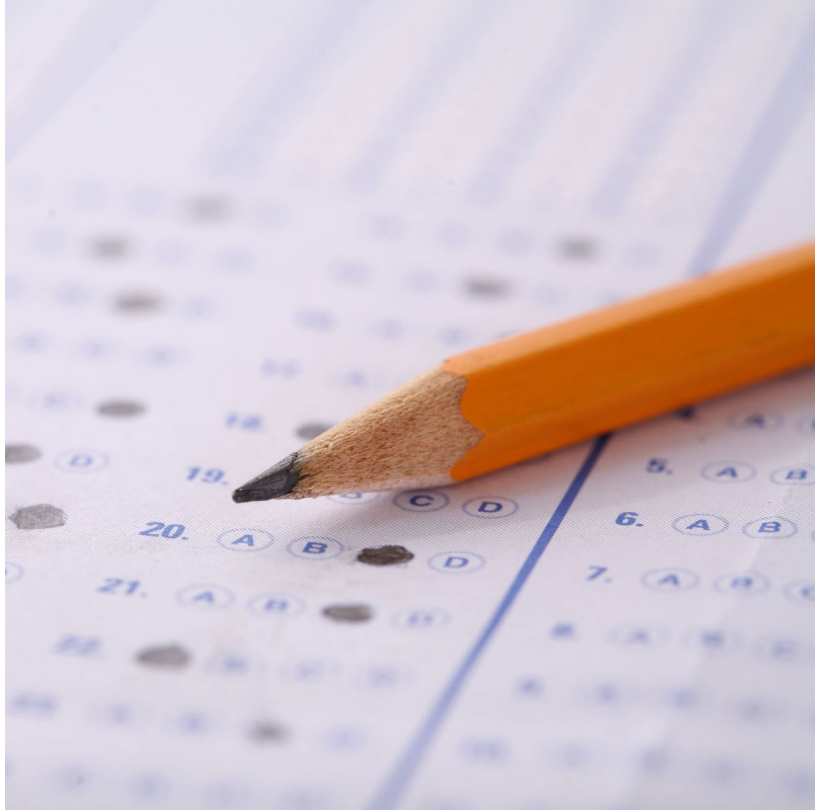
South Dakota Department of Education

# Indicator 14 Post School Outcomes

Percent of youth who are no longer in secondary school, had Individualized Education Programs (IEPs) in effect at the time they left school, and were enrolled in:

- A. higher education
- B. higher education or competitively employed
- C. higher education or in some other postsecondary education or training program; or competitively employed or in some other employment within one year of leaving high school.

(20 U.S.C. 1416(a)(3)(B))



# Post School Outcome

---

Finding out what the student is doing one year after leaving high school (graduated, aged out, or dropped out)

- Did they go to Post Secondary school?
- Were they competitively employed?
- Did they seek other training or employment such as working on family farm?
- Were they not engaged at all after leaving HS?

# Post School Outcomes Process

- Two-step process

---

  - Appendix A – Districts provide information about students once they leave high school
    - IEP information about transition goals and activities
    - Family contact information
  - Appendix B - Survey
    - Independent contractor collects survey information



# Collection Method

- Data collected through a telephone survey

---

  - Districts with volunteer callers contact students in the spring of the year following the students' graduation
  - Hired callers attempt to contact students from districts that don't have volunteer callers
  - Follow up telephone calls are made during the summer to contact students who did not complete the telephone survey
  - Response rates are significantly higher when students are contacted by someone they know. We recruit more volunteer callers each year.
- Census collection: meaning all students receive a survey (call)



# Higher Education Includes...

---



Youth who have been enrolled on a full- or part-time basis

in a community college (2-year program) or college/university (4- or more year program) or in a vocational technical educational program (2-year program)



for at least one complete term, at anytime in the year since leaving high school.

# Other Postsecondary Education or Training Includes...

Youth who have been enrolled on a full- or part-time basis

- for at least 1 complete term at any time in the year since leaving high school
- in an education or training program (e.g., Job Corps, adult education, workforce development program, vocational technical school that is less than a 2-year program).

# Competitive Employment Includes...

---

---

Youth who have worked for pay

---

at or above the minimum wage

---

in a setting with others who are nondisabled

---

for a period of 20 hours a week

---

for at least 90 days at any time in the year since leaving high school.

---

(This includes military employment.)



# Other Employment Includes...

---



Youth who have worked for pay  
or been self-employed

for a period of at least 90 days at any time in  
the year since leaving high school.



This includes working in a family business (e.g., farm, store, fishing,  
ranching, catering services, etc.).

# Here's the Math...

---

**To calculate the indicator percentages, the following calculations are used:**

---

$A = \text{Tier 1 divided by total respondents}$

---

$B = \text{Tier 1} + \text{Tier 2 divided by total respondents}$

---

$C = \text{Tier 1} + \text{Tier 2} + \text{Tier 3} + \text{Tier 4 divided by total respondents}$

---

(NPSO)

**In South Dakota from 2021 Exiter Data (Appendix B):**

- There were **353** total respondents.
- 1 = **58** respondent leavers were enrolled in “**higher education.**” 17%
- 2 = **192** respondent leavers were engaged in “**competitive employment.**” 53%
- 3 = **5** of respondent leavers were enrolled in “**some other postsecondary education or training.**” 2%
- 4 = **28** of respondent leavers were engaged in “**some other employment.**” 9%
- Thus,
- A = 58 (#1) divided by 353 (total respondents) = 16%
- B = 58 (#1) + 192 (#2) divided by 353 (total respondents) = 71%
- C = 58 (#1) + 192 (#2) + 5 (#3) + 28 (#4) divided by 353 (total respondents) = 80%

(NPSO)



TARGETS

FFY	2020	2021	2022	2023	2024	2025
Target A >=	Baseline: 10.49%	11.50%	12.50%	14.00%	15.50%	17.00%
Target B >=	Baseline: 61.73%	63.00%	64.50%	66.00%	67.50%	69.50%
Target C >=	Baseline: 77.16%	78.00%	79.00%	80.00%	81.00%	82.50%

2023 TARGETS AND RESULTS

	TARGET	RESULTS
TARGET A	14%	16%
TARGET B	66%	71%
TARGET C	80%	80%



# Comparison with North Dakota

---

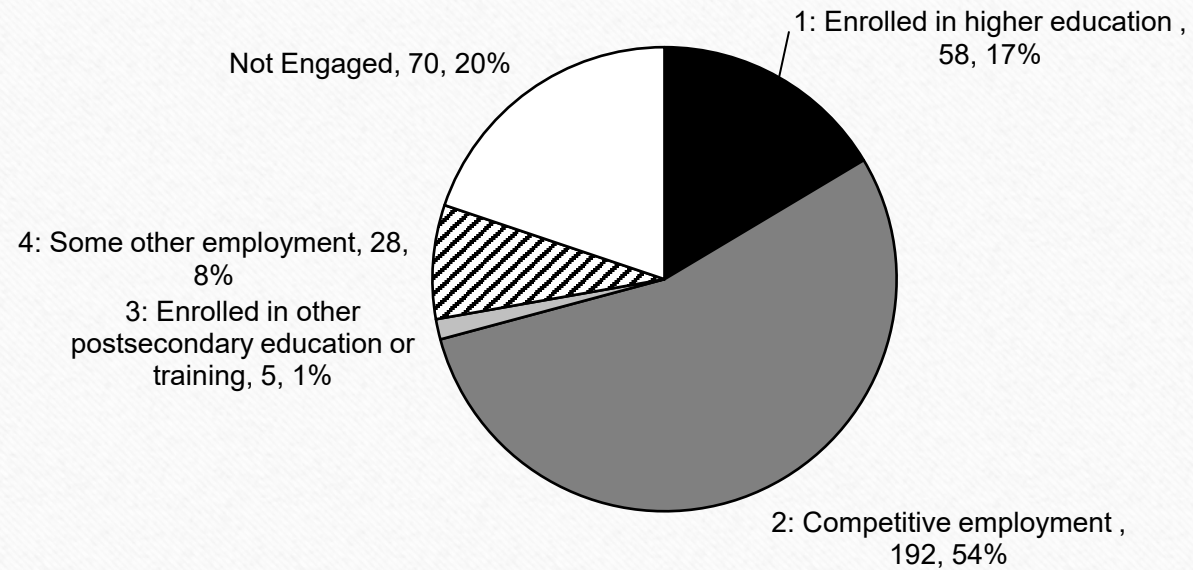
## South Dakota

- Student Population: 152,498
- Target A: 17%
- Target B: 70%
- Target C: 81%

## North Dakota

- Student Population: 118,878
- Target A: 21%
- Target B: 65%
- Target C: 82%

**South Dakota IDEA Part B SPP/APR Indicator #14: Post-School Outcomes for 2022-2023 School Year Exiters**



■ 1: Enrolled in higher education

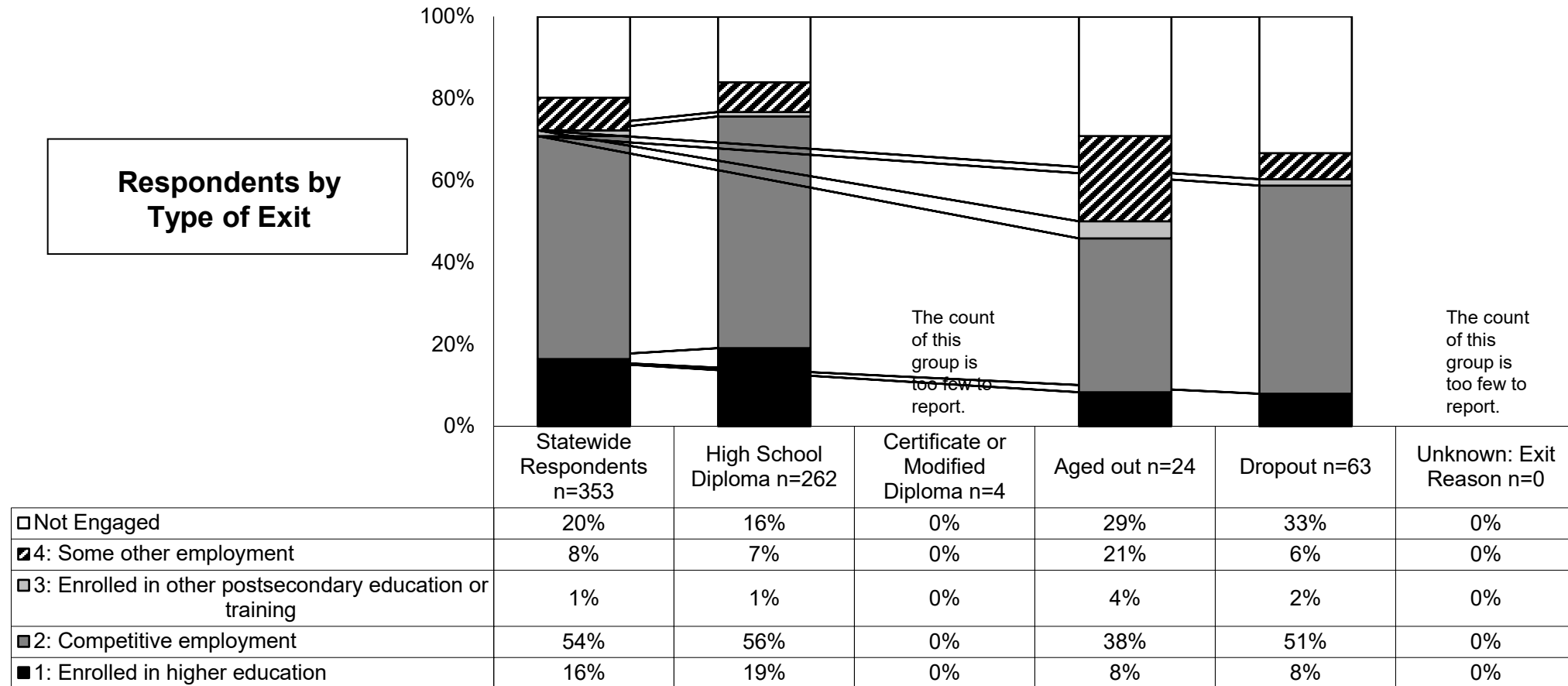
■ 2: Competitive employment

□ 3: Enrolled in other postsecondary education or training

▨ 4: Some other employment

□ Not Engaged

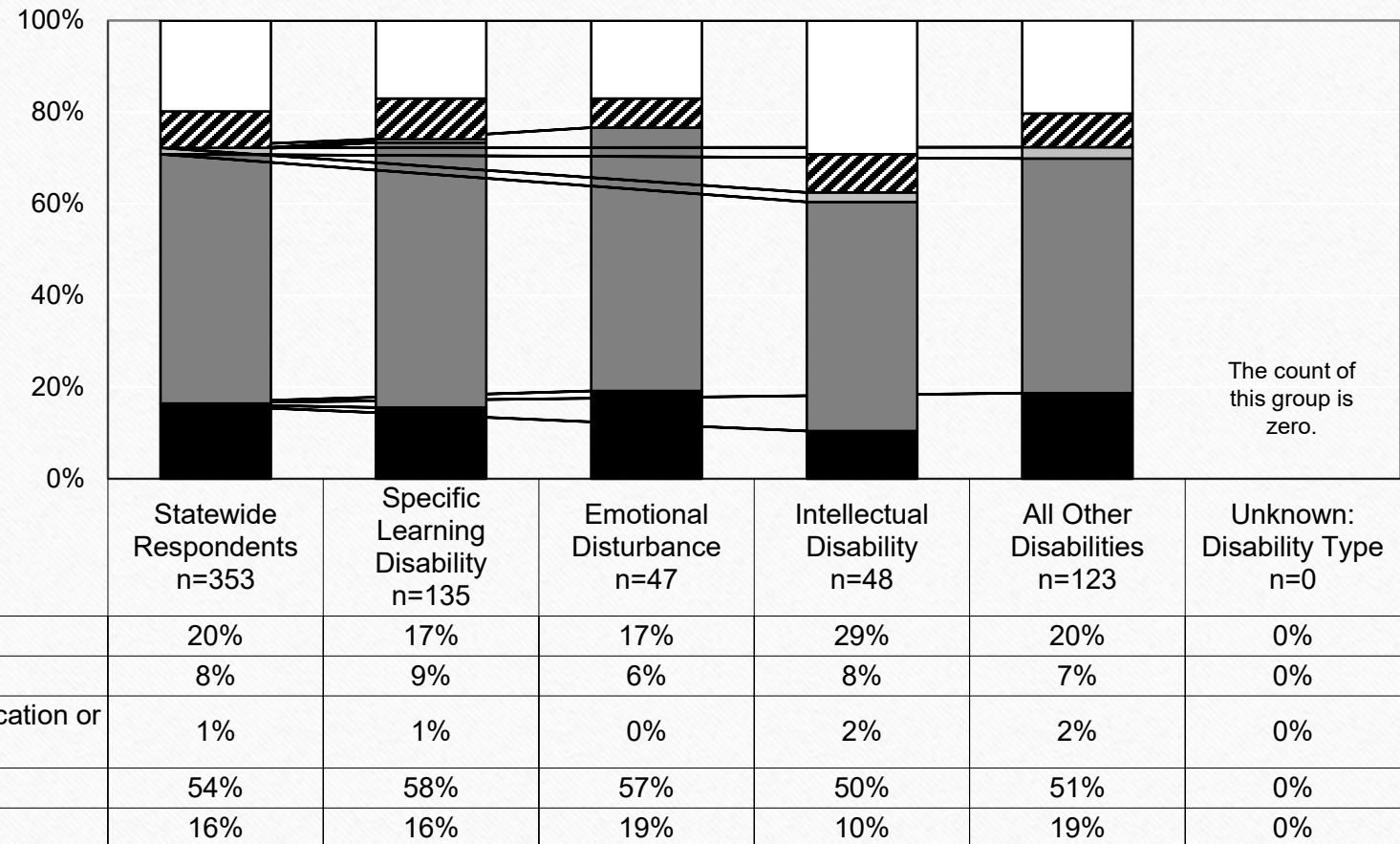
### South Dakota IDEA Part B SPP/APR Indicator #14: Post-School Outcomes for 2022-2023 School Year Exiters





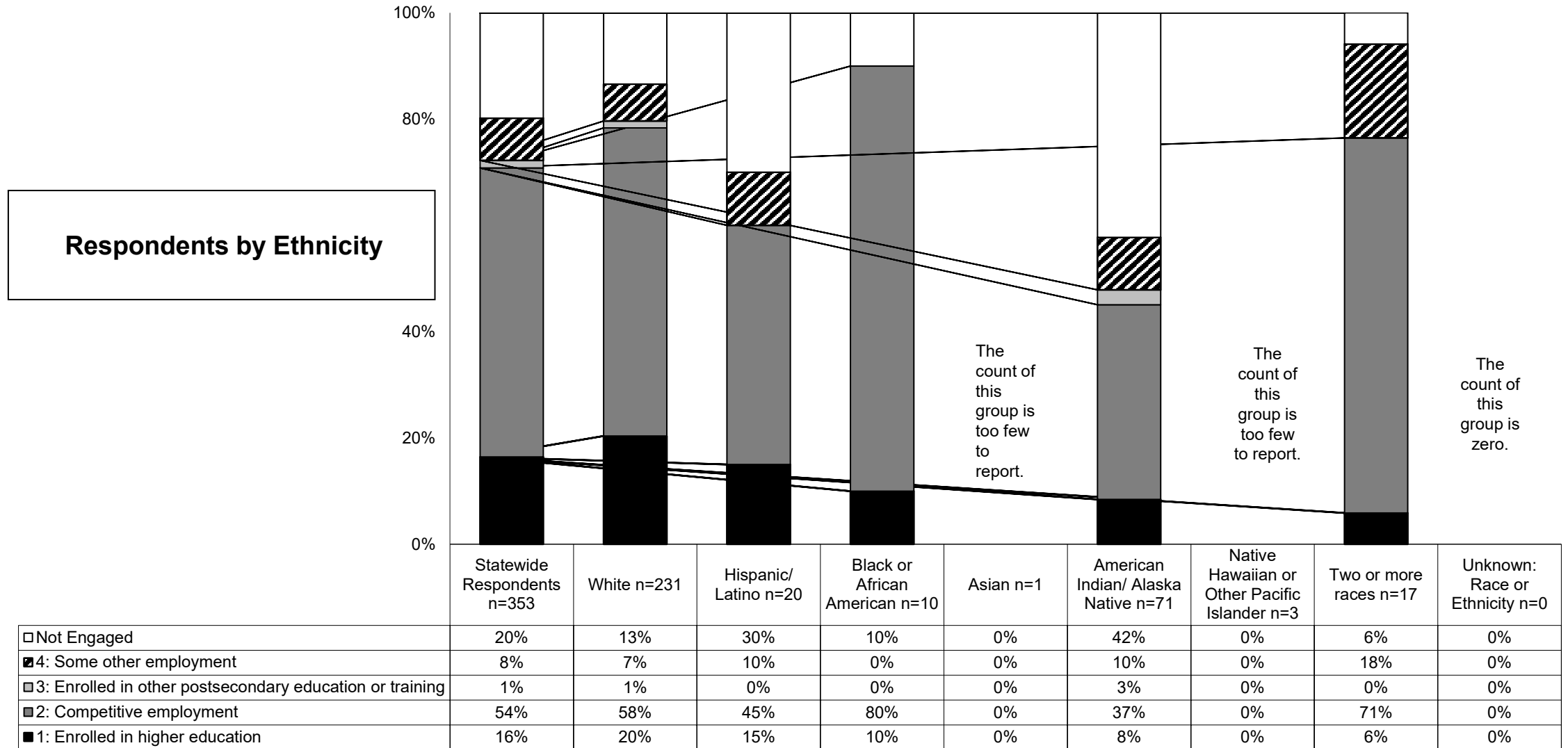
### South Dakota IDEA Part B SPP/APR Indicator #14: Post-School Outcomes for 2022-2023 School Year Exiters

#### Respondents by Type of Disability

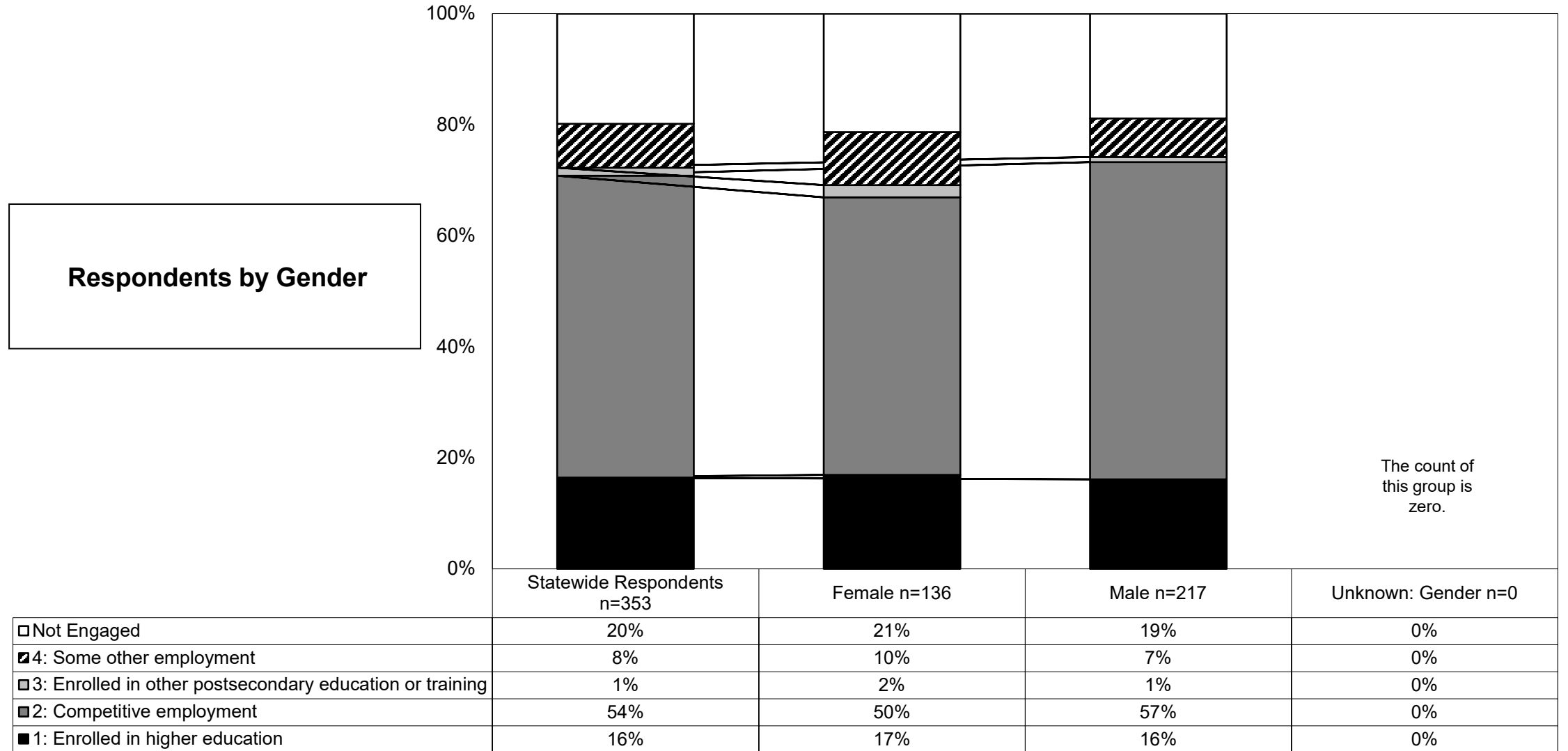




# South Dakota IDEA Part B SPP/APR Indicator #14: Post-School Outcomes for 2022-2023 School Year Exiters



**South Dakota IDEA Part B SPP/APR Indicator #14: Post-School Outcomes for 2022-2023 School Year Exiters**



## NPSO Response Calculator

## Representativeness



	Overall	LD	ED	ID	AO	Female	Minority	Rural	ELL	Dropout
<b>Target Leaver Totals</b>	872	339	89	112	332	287	285	640	32	145
<b>Response Totals</b>	353	135	47	48	123	136	122	207	7	63
<b>Target Leaver Representation</b>		38.88%	10.21%	12.84%	38.07%	32.91%	32.68%	73.39%	3.67%	16.63%
<b>Respondent Representation</b>		38.24%	13.31%	13.60%	34.84%	38.53%	34.56%	58.64%	1.98%	17.85%
<b>Difference</b>		-0.63%	3.11%	0.75%	-3.23%	5.61%	1.88%	-14.75%	-1.69%	1.22%

Note: positive difference indicates over-representation, negative difference indicates under-representation. A difference of greater than +/-3% is highlighted in red. We encourage users to also read the Westat/NPSO paper Post-School Outcomes: Response Rates and Non-response Bias, found on the NPSO website at <http://www.psocenter.org/collecting.html>.

<u>YEAR</u>	<u>Tier 1</u> <u>Higher</u> <u>Ed</u>	<u>Tier 2</u> <u>Comp</u> <u>Emp</u>	<u>Tier 3</u> <u>S.O.</u> <u>Educ.</u>	<u>Tier 4</u> <u>S.O Emp.</u>	<u>Tier 5</u> <u>Disengaged</u>	<u>Total</u> <u>Engagement</u> <u>Rate</u>
2012-2013	11.6	60.0	5.6	8.1	14.7	85.3%
2013-2014	20.2	54.0	1.4	6.2	17.7	81.8%
2014-2015	15.8	60.8	1.7	3.8	17.9	82.1%
2015-2016	20.5	56.0	1.0	5.0	17.0	82.5%
2016-2017	27.4	38.5	3.9	9.0	21.4	78.8%
2017-2018	17.0	54.0	3.0	8.0	18.0	82.0%
2018-2019	23.0	43.0	6.0	9.0	19.0	81.0%
2019-2020	10.0	51.0	3.0	12.0	23.0	77.0%
2020-2021	13.0	62.0	3.0	4.0	18.0	82.0%
2021-2022	17.0	53.0	2.0	9.0	19.0	81.0%
2022-2023	17.0	54.0	1.0	8.0	20.0	80.0%

## Improvements and Slippage



2022

Tier 1 –  
27

Tier 2 –  
94

Tier 3 –  
6

Tier 4 –  
19

Tier 5 –  
27

Did they  
contact Voc  
Rehab?

2023

Tier 1 –  
34

Tier 2 –  
100

Tier 3 –  
3

Tier 4 –  
14

Tier 5 –  
42

# Statewide Reports

- <https://www.sdposthighsurvey.org/reports.statewide.php> - 10 years worth of data
- Statewide GEDE tables
  - Gender, Ethnicity, Disability, Exit
- Statewide Summary Report
  - Brief summary on adult living, post secondary education and training, and employment
- Statewide Reports
  - More in-depth report on adult living, post secondary and training, employment, and more
- Indicator 14 Reports

Non-Response Bias - Comparing Characteristics of Eligible Respondents with those of All School Leavers

School Leaver Characteristics		Target Leaver %	Respondents %	Difference %	
Gender					
Female		33	38	-5%	
Race/Ethnicity					
Minority		33	35	-2%	
Disability					
Specific Learning Disability		39	38	1%	
Intellectual Disability		13	14	-1%	
Emotional Disturbance		9	7	-2%	
Other Health Impairments		38	35	3%	
Type of Exit					
Dropped Out		17	18	-1%	

# Summary



Increased involvement from district personnel in contacting exiters



The South Dakota data for 2023 exiters is representative in most categories identified by NPSO.



Utilized the following strategies that NPSO has identified for contacting hard-to-find youth:

Pre-notification (postcards)

Create familiarity with the survey – post online and encourage teachers to share with students prior to exiting high school