

South Dakota Board of Vocational Rehabilitation

Indicator 14 2018 Data
Presented 06.25.20

DR. FAYE LADUKE-PELSTER
ASSOCIATE PROFESSOR, SCHOOL OF EDUCATION
BLACK HILLS STATE UNIVERSITY

Presentation Contents:

- Definitions of Measurements A, B, and C
- Definition of Tiers 1 – 5
- 2018 Exiter Findings for Tiers 1-5 and Measurements A, B, and C
- 2018 Targets vs. 2018 Findings
- NPSO Data Display Template
 - Measurements A, B and C
 - Tiers 1-5
 - Type of Exit
 - Disability
 - Ethnicity
 - Gender
- NPSO Response Calculator 2018
- Multi-year Comparison of Tiers 1-5
- Summary Comments

Indicator 14 Post School Outcomes

Percent of youth who are no longer in secondary school, had Individualized Education Programs (IEPs) in effect at the time they left school, and were enrolled in:

- A. higher education
- B. higher education or competitively employed
- C. higher education or in some other postsecondary education or training program; or competitively employed or in some other employment within one year of leaving high school.

(20 U.S.C. 1416(a)(3)(B))

Higher Education Includes...

Youth who have been enrolled on a full- or part-time basis

- in a community college (2-year program) or
- college/university (4- or more year program) or
- in a vocational technical educational program (2-year program)

for at least one complete term, at anytime in the year since leaving high school.

Competitive Employment Includes...

Youth who have worked for pay

- at or above the minimum wage
- in a setting with others who are nondisabled
- for a period of 20 hours a week

for at least 90 days at any time in the year since leaving high school.

(This includes military employment.)

Other Postsecondary Education or Training Includes...

Youth who have been enrolled on a full- or part-time basis

- for at least 1 complete term at any time in the year since leaving high school

in an education or training program (e.g., Job Corps, adult education, workforce development program, vocational technical school that is less than a 2-year program).

Other Employment Includes...

Youth who have worked for pay or been self-employed

- for a period of at least 90 days at any time in the year since leaving high school.

This includes working in a family business (e.g., farm, store, fishing, ranching, catering services, etc.).

To calculate the indicator percentages, the following calculations are used:

A = Tier 1 divided by total respondents

B = Tier 1 + Tier 2 divided by total respondents

C = Tier 1 + Tier 2 + Tier 3 + Tier 4 divided by total respondents

(NPSO)

In South Dakota from 2017-2018 Exiter Data (Appendix B):

There were **313** total respondents.

1 = 53 respondent leavers were enrolled in "**higher education**". **27.35%**

2 = 168 respondent leavers were engaged in "**competitive employment**" (and not counted in Tier 1 above). **38.46%**

3 = 10 of respondent leavers were enrolled in "**some other postsecondary education or training**" (and not counted in Tier 1 or Tier 2 above). **3.85%**

4 = 26 of respondent leavers were engaged in "**some other employment**" (and not counted in 1, 2, or 3 above). **78.63%**

Thus,

A = 53 (#1) divided by **313** (total respondents) = **17.00%**

B = 53 (#1) + **168** (#2) divided by **313** (total respondents) = **71.00%**

C = 53 (#1) + **168** (#2) + **10** (#3) + **26** (#4) divided by **313** (total respondents) = **82.00%**

Target Data vs. Actual Data

TARGET DATA FFY 2018

A = 15.5%

B = 68.5%

C = 81.5%

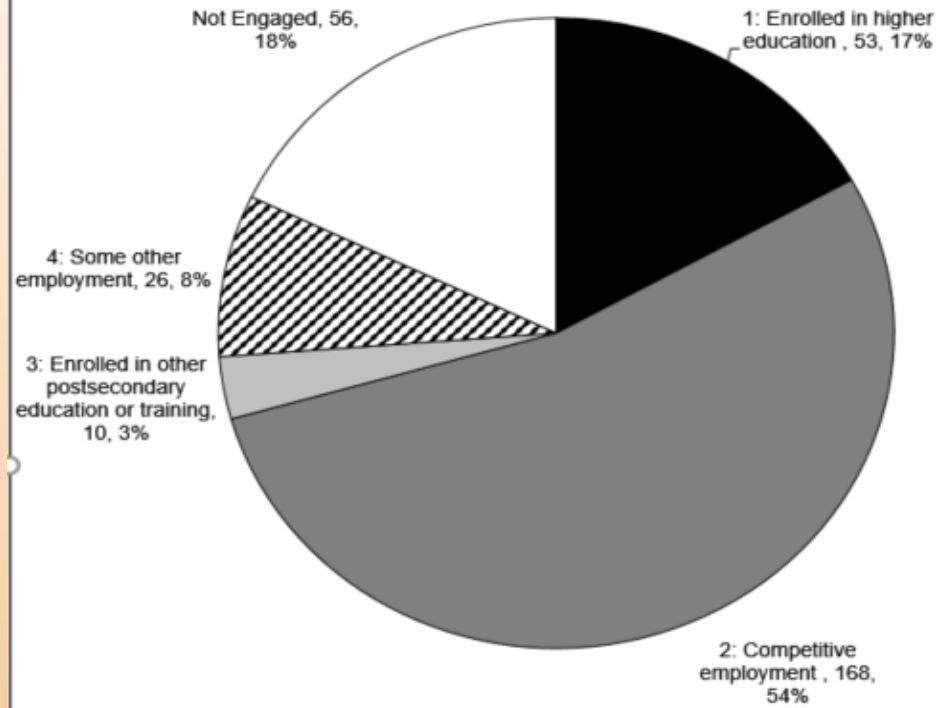
ACTUAL DATA FFY 2018

A = 17.0%

B = 71.0%

C = 82.0%

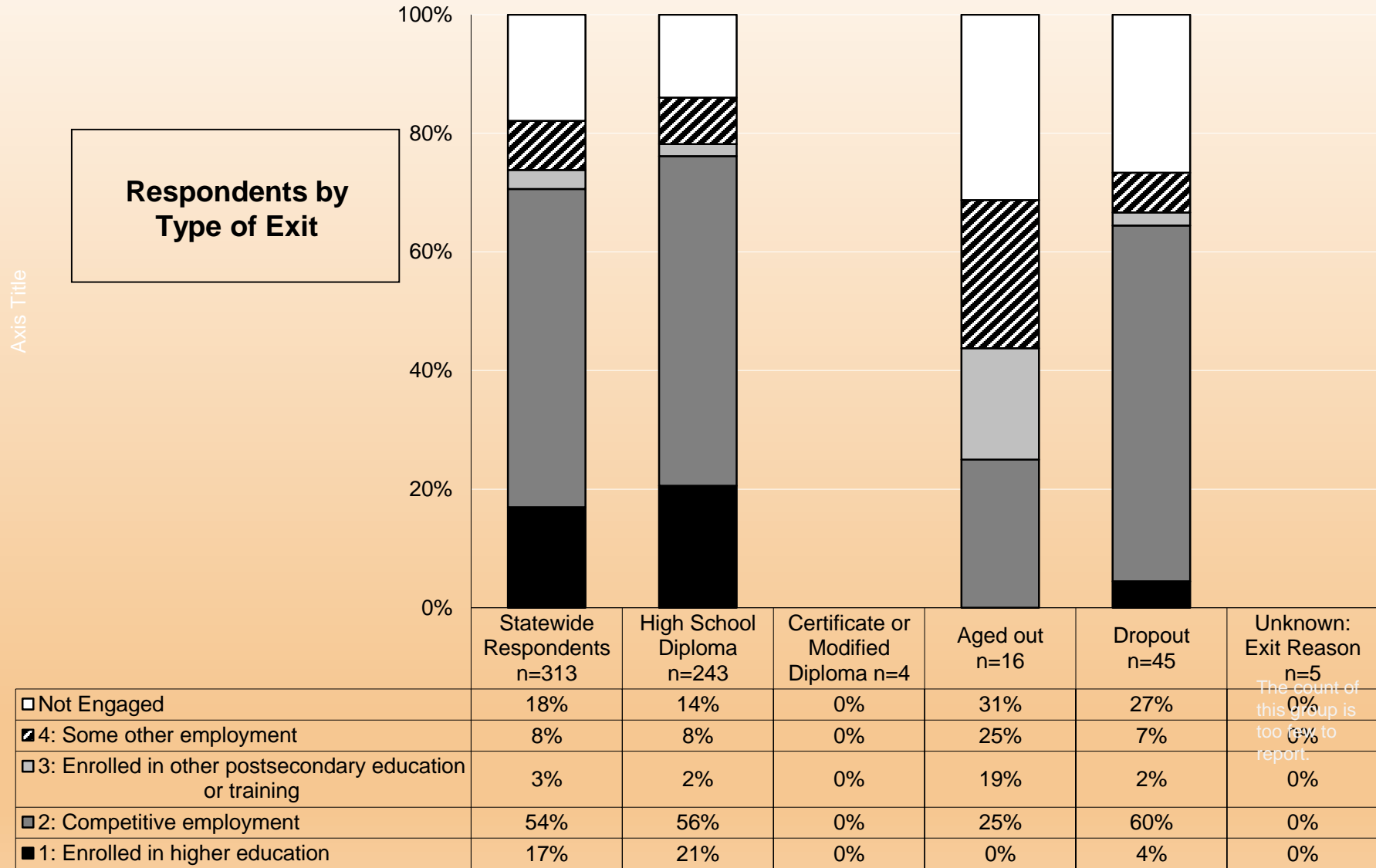
South Dakota IDEA Part B SPP/APR Indicator #14: Post-School Outcomes for 2017-2018 School Year Exiters



SPP #14 Measurement A:	17%	Equals Segment 1
SPP #14 Measurement B:	71%	Equals Segments 1+2
SPP #14 Measurement C:	82%	Equals Segments 1+2+3+4

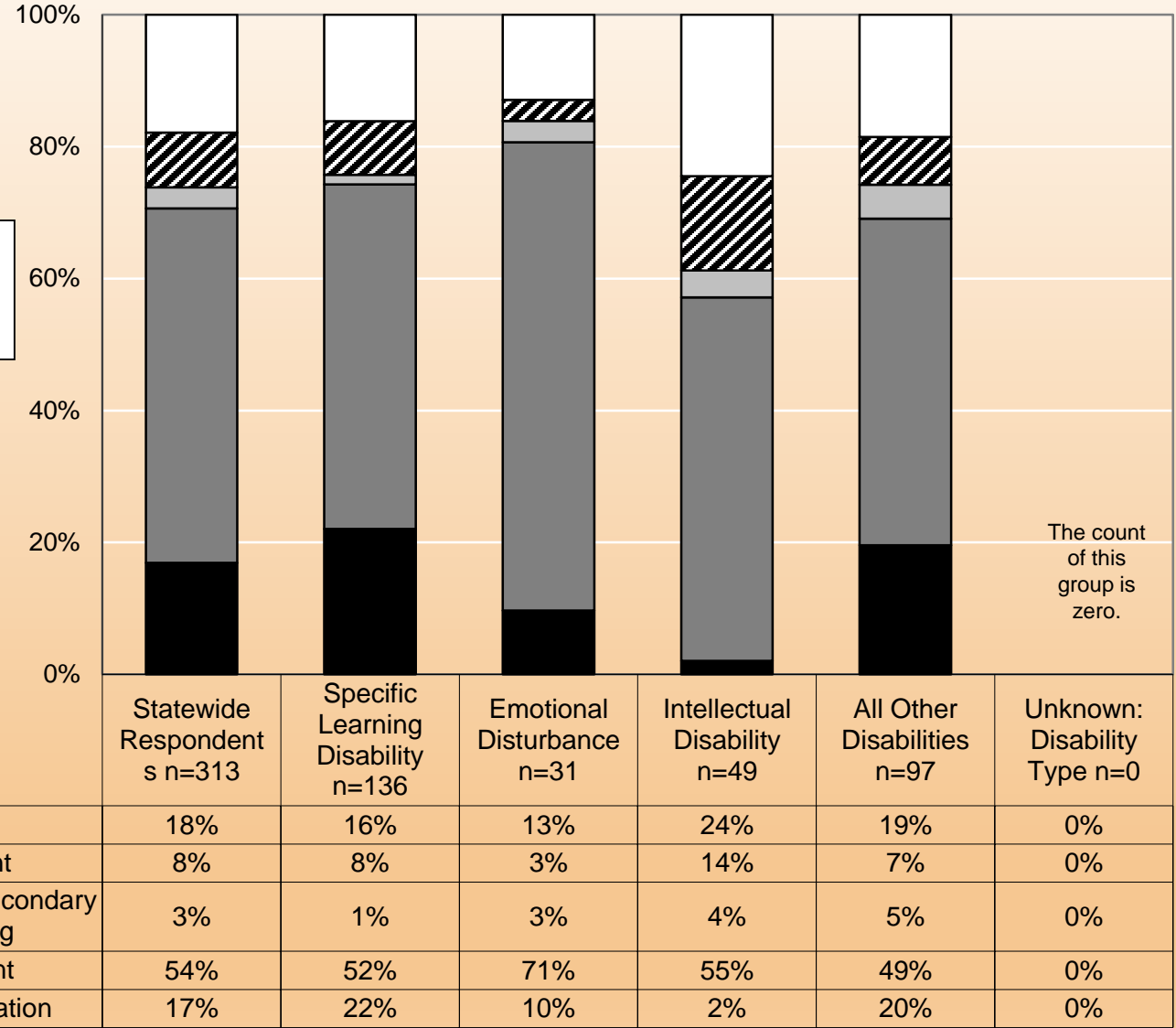
- 1: Enrolled in higher education
- 2: Competitive employment
- 3: Enrolled in other postsecondary education or training
- ▨ 4: Some other employment
- Not Engaged

South Dakota IDEA Part B SPP/APR Indicator #14: Post-School Outcomes for 2017-2018 School Year Exiters



**South Dakota IDEA Part B SPP/APR Indicator #14: Post-School Outcomes for 2017-2018
School Year Exiters**

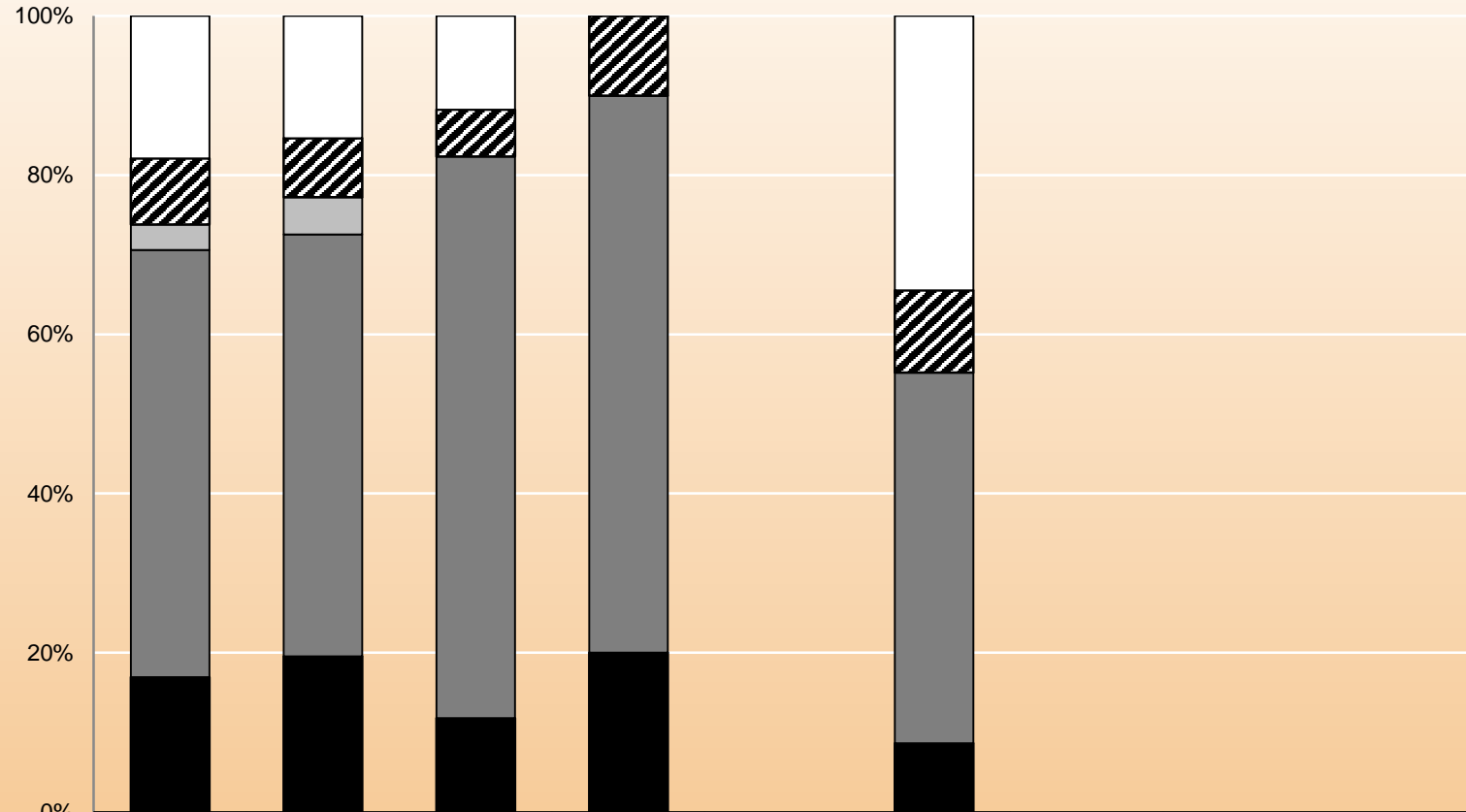
Respondents by Type of Disability



The count of this group is zero.

South Dakota IDEA Part B SPP/APR Indicator #14: Post-School Outcomes for 2017-2018 School Year Exiters

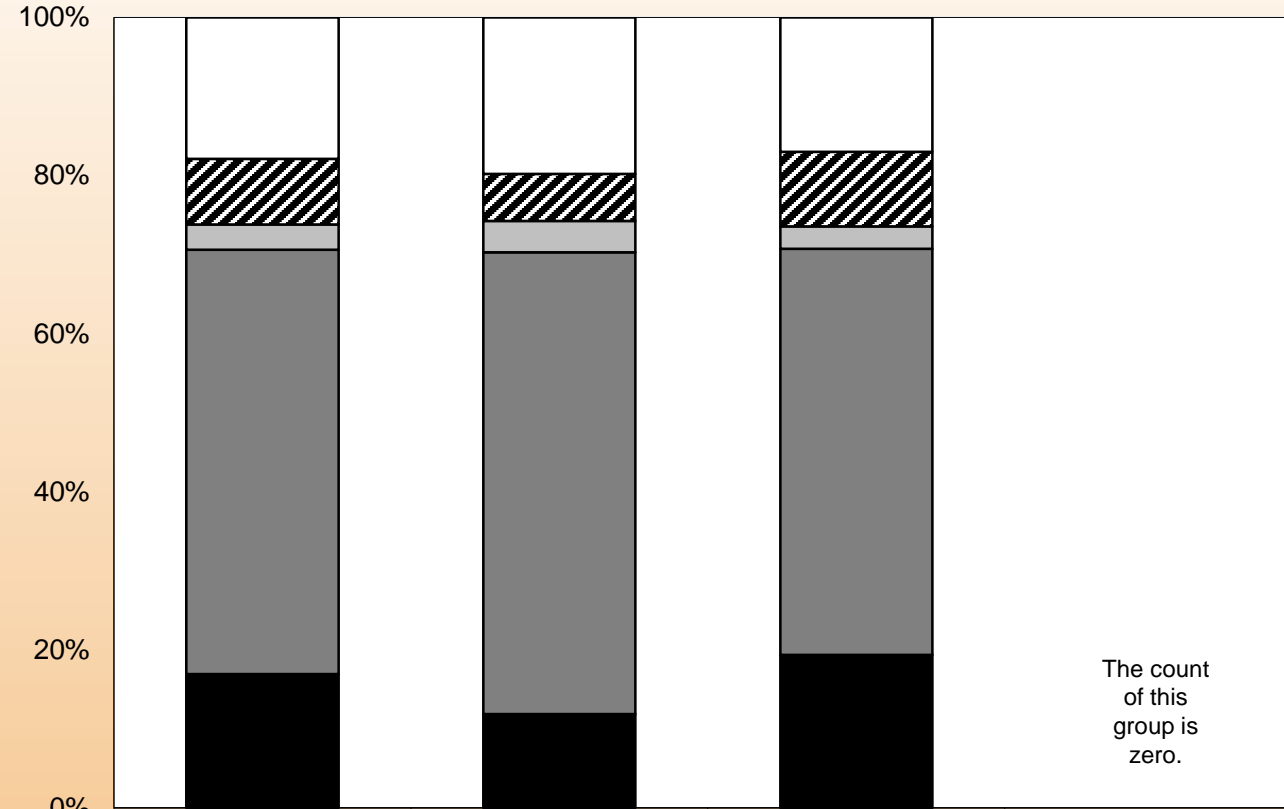
Respondents by Ethnicity



	Statewide Respondents n=313	White n=215	Hispanic/ Latino n=17	Black or African American n=10	Asian n=5	American Indian/ Alaska Native n=58	Native Hawaiian or Other Pacific Islander n=1	Two or more races n=7	Unknown: Race or Ethnicity n=0
□ Not Engaged	18%	15%	12%	0%	0%	34%	0%	0%	0%
▨ 4: Some other employment	8%	7%	6%	10%	0%	10%	0%	0%	0%
□ 3: Enrolled in other postsecondary education or training	3%	5%	0%	0%	0%	0%	0%	0%	0%
■ 2: Competitive employment	54%	53%	71%	70%	0%	47%	0%	0%	0%
■ 1: Enrolled in higher education	17%	20%	12%	20%	0%	9%	0%	0%	0%

South Dakota IDEA Part B SPP/APR Indicator #14: Post-School Outcomes for 2017-2018 School Year Exiters

Axis Title
Respondents by Gender



	Statewide Respondents n=313	Female n=101	Male n=212	Unknown: Gender n=0
□ Not Engaged	18%	20%	17%	0%
▨ 4: Some other employment	8%	6%	9%	0%
▤ 3: Enrolled in other postsecondary education or training	3%	4%	3%	0%
▥ 2: Competitive employment	54%	58%	51%	0%
■ 1: Enrolled in higher education	17%	12%	19%	0%

	Overall	LD	ED	ID	AO	Female	Minority	Rural	ELL	Dropout
Target Leaver Totals	721	333	72	94	222	258	200	504	14	103
Response Totals	312	136	31	49	96	101	98	189	8	45
Target Leaver Representation		46.19%	9.99%	13.04%	30.79%	35.78%	27.74%	69.90%	1.94%	14.29%
Respondent Representation		43.59%	9.94%	15.71%	30.77%	32.37%	31.41%	60.58%	2.56%	14.42%
Difference		-2.60%	-0.05%	2.67%	-0.02%	-3.41%	3.67%	-9.33%	0.62%	0.14%

Note: positive difference indicates over-representation, negative difference indicates under-representation. A difference of greater than +/-3% is highlighted in red. We encourage users to also read the Westat/NPSO paper Post-School Outcomes: Response Rates and Non-response Bias, found on the NPSO website at <http://www.psocenter.org/collecting.html>.

Difference between Target Leavers and Respondent Representativeness

	LD	ED	ID	AO	Female	Minority	Rural	ELL	Dropout
2007-08	-0.17%	-1.35%	0.67%	0.86%	0.97%	-8.59%		0.41%	-6.44%
2008-09	0.13%	-0.35%	-1.23%	1.46%	-0.12%	-0.06%		-0.68%	-2.09%
2014-15	-1.68%	-0.02%	-1.47%	-0.20%	-2.79%	-0.20%		-0.60%	-2.12%
2015-16	3.51%	-0.79%	-1.26%	-1.47%	-0.26%	-3.54%		0.14%	-4.11%
2016-17	-6.63%	1.13%	0.22%	5.28%	1.37%	1.52%		0.48%	-6.16%
2017-18	-2.60%	0.05%	2.67%	-0.02%	-3.41%	-3.67%	-9.33	0.62%	-0.14%

Improvements and Slippage per Tier – Yearly Comparison

<u>YEAR</u>	<u>Tier 1</u> <u>Higher Ed</u>	<u>Tier 2</u> <u>Comp Emp</u>	<u>Tier 3</u> <u>S.O. Educ.</u>	<u>Tier 4</u> <u>S.O Emp.</u>	<u>Tier 5</u> <u>Disengaged</u>	<u>Total Engagement</u> <u>Rate</u>
2008-2009	14.6	45.3	7.3	11.4	21.4	78.6%
2009-2010	8.7	48.8	5.3	10.2	27.0	73.0%
2010-2011	10.3	53.1	5.9	7.4	23.3	76.7%
2011-2012	13.3	53.8	5.1	6.7	22.2	78.9%
2012-2013	11.6	60.0	5.6	8.1	14.7	85.3%
2013-2014	20.2*	54.0	1.4	6.2	17.7	81.8%
2014-2015	15.8	60.8	1.7	3.8	17.9	82.1%
2015-2016	20.5	56.0	1.0	5.0	17.0	82.5%
2016-2017	27.4	38.5	3.9	9.0	21.4	78.8%
2017-2018	17.0	54.0	3.0	8.0	18.0	82.0%

Summary

- In 2017-2018, South Dakota reported the fourth highest engagement percentage since data was first collected in 2008-2009.
- The percentage of disengaged respondents decreased 4.4% this year.
- South Dakota exceeded targets for Measures A, B and C.