

**State Conservation Commission Minutes**  
**April 20, 2022**  
**Matthews Training Center in Pierre, SD**

**Call to Order:** Chairman Doug Hansen called the meeting to order at 8:10 AM.

**Roll Call of members present:**

Dean Odden, Bruce Haines, Tom Glover, Dusty Rodiek, Gene Williams, Doug Hansen, Charlie Moe

**Via Teleconference:** Bill Coburn

**Members Absent:** Mike Konechne

**Others present:** Bill Smith (DANR), Kim Paxton (DANR), Timothy Schoonhoven (DANR), Alex Roeber (DANR), Jorgen Turgeon (DANR), Hunter Roberts (DANR), Angela Ehlers (SDACD), Tonja Jessen (Hyde Conservation District), Valerie Feddersen (Jones Conservation District), Meshele Townsend (Edmunds Conservation District), Emily Hauck (Edmunds Conservation District), Tony Sunseri (NRCS), Ken Steele (Gregory Conservation District).

**Others present Via Teleconference:**

Laurie Chauncy (Todd Conservation District), Lisa Paulsen (Clark Conservation District), Dennis Skadsen (Day Conservation District), Jamie Forbes (Kingsbury Conservation District), Dr. Michael Amolins (Harrisburg School District), Justin Krajewski (Belle Fourche River Watershed Partnership)

**Conflict of Interest Disclosure:** Chairman Hansen asked the Commission members if they had any conflicts of interest to disclose at this time. The Chairman also reminded the Commission that they would need to abstain from voting on grants submitted by their districts.

**Approval of January 25, 2022, public hearing for Brown and South Brown Merger and Commission Meeting Minutes:** A motion was made by Dusty Rodiek and seconded to approve both the January 25, 2022 public hearing and commission meeting minutes as submitted. Roll call vote: Dean Odden-aye, Bruce Haines -aye, Tom Glover-aye, Bill Coburn-aye, Charlie Moe-aye, Dusty Rodiek -aye, Gene Williams-aye, Doug Hansen-aye. **Motion carried.**

**Corrections and or additions to the minutes:** None

**Upcoming travel:** Bill Smith gave an update for the upcoming travel.

**Request for New Business to be placed on the agenda:** None

**Correspondence:** None

**Revolving Loan Report:** Jordan Turgeon presented the revolving loan status report.

A motion was made by Bruce Haines and seconded to approve the Revolving Loan Status report as submitted. Roll call vote: Dean Odden-aye, Bruce Haines -aye, Tom Glover-aye, Bill Coburn-aye, Charlie Moe-aye, Dusty Rodiek-aye, Gene Williams-aye, Doug Hansen-aye. **Motion carried.**

**Revolving Loan Applications:** None

**Grant Program/Updates/Changes/Amendments/Reports** Jordan Turgeon provided a report.

**Final Reports:** 16 final reports were provided by Jordan Turgeon.

Grant Extension/Amendment Requests:

**Jones Conservation District's request for an eighteen-month extension:** for Grant #2020-CSW-018 Shelterbelt Establishment. A motion was made by Charlie Moe and seconded to deny the request. Roll call vote: Dean Odden-aye,

Bruce Haines -aye, Tom Glover-aye, Bill Coburn-aye, Charlie Moe-aye, Dusty Rodiek -aye, Gene Williams-aye, Doug Hansen-aye. **Motion carried. Reason for the denial was the commission did not feel they are ready for the extension currently.**

**Jones Conservation District's request for an eighteen-month extension for:** Grant # 2021-CSW-30 Dry Creek Fire Recovery. A motion was made by Gene Williams and seconded to deny the request. Roll call vote: Dean Odden-aye, Bruce Haines -aye, Tom Glover-aye, Bill Coburn-aye, Charlie Moe-aye, Dusty Rodiek -aye, Gene Williams-aye, Doug Hansen-aye. **Motion carried. Reason for the denial was the district should reapply for one specific grant at the next grant round.**

**Mellette Conservation District's request for a six-month extension for:** Grant # 2021-CSW-018 2021 Multi Practice Grant. A motion was made by Gene Williams and seconded to approve the request. Roll call vote: Dean Odden-aye, Bruce Haines-aye, Tom Glover-aye, Bill Coburn-aye, Dusty Rodiek -aye, Gene Williams-aye, Doug Hansen-aye. **Motion carried.** Charlie Moe-abstained.

**Todd County Conservation District's request an amendment for:** Grant # 2021-CSW-036 TC Tree. The amendment would add Bennet County to the grant. A motion was made by Gene Williams and seconded to approve the request. Roll call vote: Dean Odden-aye, Bruce Haines -aye, Tom Glover-aye, Bill Coburn-aye, Dusty Rodiek -aye, Gene Williams-aye, Doug Hansen-aye. **Motion carried.** Charlie Moe-abstained.

**Spring Grant Round Review: There were a total of 13 grants submitted for funding consideration: The below minutes reflect the alphabetical order of the grants as submitted by conservation districts rather than the order chronologically in which they were acted upon.**

A motion was made by Tom Glover and seconded to approve the Butte Conservation District's Multi-County Ditch to Pipe Conversion application in the amount of \$20,000.00. Roll call vote: Dean Odden-aye, Bruce Haines -aye, Tom Glover-aye, Bill Coburn-aye, Charlie Moe-aye, Dusty Rodiek-aye, Gene Williams-aye, Doug Hansen-aye. **Motion carried.**

A motion was made by Dusty Rodiek and seconded to approve the Clark Conservation District's Tree Shelterbelt/Grass/Cover Crop application in the amount of \$15,000. Roll call vote: Dean Odden-aye, Bruce Haines-aye, Tom Glover-aye, Bill Coburn-aye, Charlie Moe-aye, Dusty Rodiek-aye, Gene Williams-aye, Doug Hansen-aye. **Motion carried.**

A motion was made by Gene Williams and seconded to approve the Davison Conservation District's Cover Crop/Grazing application in the amount of \$12,500. Roll call vote: Dean Odden-aye, Tom Glover-aye, Bill Coburn-aye, Charlie Moe-aye, Dusty Rodiek-aye, Gene Williams-aye, Doug Hansen-aye. **Motion carried.** Bruce Haines-abstained.

A motion was made by Bruce Haines and seconded to approve the Day Conservation District's Northeast Glacial Lakes application in the amount of \$15,000. Roll call vote: Dean Odden-aye, Bruce Haines-aye, Tom Glover-aye, Bill Coburn-aye, Charlie Moe-aye, Dusty Rodiek-aye, Gene Williams-aye, Doug Hansen-aye. **Motion carried**

A motion was made by Dusty Rodiek and seconded to approve the Edmunds Conservation District's North Missouri Cover Crop Initiative application in the amount of \$30,000. Roll call vote: Dean Odden-aye, Bruce Haines -aye, Tom Glover-aye, Bill Coburn-aye, Charlie Moe-aye, Dusty Rodiek-aye, Gene Williams-aye, Doug Hansen-aye. **Motion carried.**

A motion was made by Gene Williams and seconded to approve the Gregory Conservation District's Gregory County Projects 8 application in the amount of \$45,000. Roll call vote: Dean Odden-aye, Bruce Haines-aye, Bill Coburn-aye, Charlie Moe-aye, Dusty Rodiek-aye, Gene Williams-aye, Doug Hansen-aye. **Motion carried.** Tom Glover-abstained.

A motion was made by Bruce Haines and seconded to approve the Hanson Conservation District's 2022 Brush Management application in the amount of \$5,000. Roll call vote: Dean Odden-aye, Bruce Haines-aye, Tom Glover-aye, Bill Coburn-aye, Charlie Moe-aye, Dusty Rodiek-aye, Gene Williams-aye, Doug Hansen-aye. **Motion carried**

A motion was made by Dusty Rodiek and seconded to approve the Hanson Conservation District's Shelterbelt Project application in the amount of \$7,500. Roll call vote: Dean Odden-aye, Bruce Haines-aye, Tom Glover-aye, Bill Coburn-aye, Charlie Moe-aye, Dusty Rodiek-aye, Gene Williams-aye, Doug Hansen-aye. **Motion carried.**

A motion was made by Charlie Moe and seconded to approve the Hyde-Faulk Conservation District's Hyde/Faulk Enhancement Project Phase 2 application in the amount of \$30,000. Roll call vote: Dean Odden-aye, Bruce Haines-aye, Tom Glover-aye, Bill Coburn-aye, Charlie Moe-aye, Dusty Rodiek-aye, Gene Williams-aye, Doug Hansen-aye. **Motion carried**

A motion was made by Gene Williams and seconded to table the Kingsburg Conservation District's Nature Walking Trail application till the end of the grant round. Roll call vote: Dean Odden-aye, Bruce Haines-aye, Tom Glover-aye, Bill Coburn-aye, Charlie Moe-aye, Dusty Rodiek-aye, Gene Williams-aye, Doug Hansen-aye. **Motion carried**

A motion was made by Gene Williams and seconded to table the Lincoln Conservation Districts Building Community Through Conversation application till the end of the grant round. Roll call vote: Dean Odden-aye, Bruce Haines -aye, Tom Glover-aye, Bill Coburn-aye, Charlie Moe-aye, Dusty Rodiek-aye, Gene Williams-aye, Doug Hansen-aye. **Motion carried**

A motion was made by Gene Williams and seconded to approve the Perkins Conservation District's 2022 Seeding and Pipeline Grant application in the amount of \$12,000.00. Roll call vote: Dean Odden-aye, Bruce Haines-aye, Tom Glover-aye, Bill Coburn-aye, Charlie Moe-aye, Dusty Rodiek-aye, Gene Williams-aye, Doug Hansen-aye. **Motion carried**

A motion was made by Bruce Haines and seconded to deny the Roberts Conservation District's Conservation Outreach and Promotion application. Substitute motion was made by Charlie Moe and seconded to table the Roberts Conservation District's application till the end of the grant round. Roll call vote on substitute motion: Dean Odden-aye, Bruce Haines -aye, Tom Glover-aye, Bill Coburn-aye, Charlie Moe-aye, Dusty Rodiek-aye, Gene Williams-aye, Doug Hansen-aye. **Motion carried**

A motion was made by Gene Williams and seconded to reconsider the Butte Conservation District's application. Roll call vote: Dean Odden-aye, Bruce Haines-aye, Tom Glover-aye, Bill Coburn-aye, Charlie Moe-aye, Dusty Rodiek-aye, Gene Williams-aye, Doug Hansen-aye. **Motion carried**

A motion was made by Den Odden and seconded to award an additional \$2,500.00 to the Butte Conservation District's application. Roll call vote: Dean Odden-aye, Bruce Haines -aye, Tom Glover-aye, Bill Coburn-aye, Charlie Moe-aye, Dusty Rodiek-aye, Gene Williams-aye, Doug Hansen-aye. **Motion carried**

A motion was made by Tom Glover and seconded to reconsider the Davison Conservation District's application. Roll call vote: Dean Odden-aye, Bruce Haines -abstained, Tom Glover-aye, Bill Coburn-aye, Charlie Moe-aye, Dusty Rodiek-aye, Gene Williams-aye, Doug Hansen-aye. **Motion carried**

A motion was made by Dusty Rodiek and seconded to award an additional \$3,115.46 to the Davison Conservation District's application. Roll call vote: Dean Odden-aye, Tom Glover-aye, Bill Coburn-aye, Charlie Moe-aye, Dusty Rodiek-aye, Gene Williams-aye, Doug Hansen-aye. **Motion carried.** Bruce Haines-abstained.

A motion was made by Gene Williams and seconded to reconsider the Gregory Conservation District's application. Roll call vote: Roll call vote: Dean Odden-aye, Bruce Haines -aye, Bill Coburn-aye, Charlie Moe-aye, Dusty Rodiek-aye, Gene Williams-aye, Doug Hansen-aye. **Motion carried.** Tom Glover-abstained

A motion was made by Dusty Rodiek and seconded to award an additional \$10,000 to the Gregory Conservation District's application. Roll call vote: Dean Odden-aye, Bruce Haines -aye, Bill Coburn-aye, Charlie Moe-aye, Dusty Rodiek-aye, Gene Williams-aye, Doug Hansen-aye. **Motion carried.** Tom Glover-abstained.

A motion was made by Charlie Moe and seconded to reconsider the Hyde-Faulk County Conservation District's application. Roll call vote: Dean Odden-aye, Bruce Haines-aye, Tom Glover-aye, Bill Coburn-aye, Charlie Moe-aye, Dusty Rodiek-aye, Gene Williams-aye, Doug Hansen-aye. **Motion carried**

A motion was made by Charlie Moe and seconded to award an additional \$5,000 to the Hyde-Faulk Conservation District's application. Roll call vote: Dean Odden-aye, Bruce Haines -aye, Tom Glover-aye, Bill Coburn-aye, Charlie Moe-aye, Dusty Rodiek-aye, Gene Williams-aye, Doug Hansen-aye. **Motion carried**

A motion was made by Tom Glover and seconded to deny the Kingsbury Conservation District's application. Roll call vote: Dean Odden-aye, Bruce Haines-aye, Tom Glover-aye, Bill Coburn-aye, Charlie Moe-aye, Dusty Rodiek-aye, Gene Williams-aye, Doug Hansen-aye. **Motion carried. Reason for denial was there are other available funds the project can pursue.**

A motion was made by Dusty Rodiek and seconded to approve Lincoln Conservation District's application in the amount of \$15,000. Roll call vote: Dean Odden-aye, Bruce Haines-aye, Tom Glover-aye, Bill Coburn-aye, Charlie Moe-aye, Dusty Rodiek-aye, Gene Williams-aye, Doug Hansen-aye. **Motion carried**

A motion was made by Gene Williams seconded to approve the Roberts Conservation Grant for \$3,000. Roll call vote: Dean Odden-aye, Bruce Haines -aye, Tom Glover-aye, Bill Coburn-aye, Charlie Moe-aye, Dusty Rodiek-aye, Gene Williams-aye, Doug Hansen-aye. **Motion carried**

**Revolving Loan Program Rules:** Bill Smith informed the commission about creating a subcommittee to revise rules for the Revolving Loan Program. Doug Hansen, Gene Williams, and Dusty Rodiek volunteered to serve on the subcommittee.

**Soil Conservation Award Review and Selections:** Alex Roeber informed the commission of submitted nominations for Soil Conservation Award.

### **2022 Soil Conservation Farm, Ranch Awards, 9 total applications**

Those included Beadle Conservation District: BJ McNeil, Grant Conservation District: Scott and Laurie Kneeland, Hughes County Conservation District: Allen Garber, Jerry Hawkins, Jon Beastron, Lee Kleinschmidt, Matt LeBrun, Moody County Conservation District: Scott Thompson, Roberts Conservation District: Calvin Finnesand.

A motion was made by Dean Odden and seconded to approve all of the nominations. Roll call vote: Dean Odden-aye, Bruce Haines-aye, Tom Glover-aye, Bill Coburn-aye, Charlie Moe-aye, Dusty Rodiek-aye, Gene Williams-aye, Doug Hansen-aye. **Motion carried.**

**NACD Tech. Assistance Priority Grants:** Angela Ehlers updated the commission on the purpose of the priority grant and requested feedback from the commission for current priority areas. The commission agreed that the Prairie Area should be included as a priority area.

**SDACD Committee Assignment:** Commissioners assigned committee roles.

**SDACD:** Update was given by Angela Ehlers.

**NRCS -** Tony Sunseri updated the Commission on NRCS activities and programs.

**Division Report -**Bill Smith updated the Commission on division activities.

**Open Forum and Public Comment:** None

**New Business:** None

**Next Meeting date and location:** To be announced at a later date.

**Ending Remarks:** None

**Meeting ending time:** 12:15 PM CDT meeting was adjourned.



**State Conservation Commission Minutes**  
**August 22, 2022**  
**Teleconference and Matthews Training Center, Pierre**

**Call to Order:** Chairman Doug Hansen called the meeting to order at 10:06 AM CT.

**Commissioners Present:**

Dean Odden-present; Bruce Haines-present; Gene Williams-present; Mike Konechne-absent, Bill Coburn-present; Charlie Moe-absent; Tom Glover-present; Dusty Rodiek- present; Doug Hansen-present.

**Others Present in Person:** Angela Ehlers-(SDACD) Bill Smith-(DANR), Kim Paxton-(DANR).

**Other attendees Via Teleconference:** Alex Roeber-(DANR), Jordan Turgeon-(DANR), Katie Schultz-(Haakon Con. District)

**Conflict of Interest Disclosure:** Chairman Hansen asked the Commission members if they had any conflicts of interest to disclose at this time. None

**Request for new business to be placed on the agenda:** None

**Correspondence:** Bill Smith informed the Commission that a letter was received requesting a district supervisor be removed from office pursuant to SDCL 38-8-43. Bill is working with the Attorney General's office on the process to move forward on the complaint. A contested case hearing will be held in Pierre when date and time are confirmed.

**Revolving Loan Program (Chapter 12:03:0-3)**

A motion was made by Gene Williams and seconded for the Commission to promulgate administrative rules for the Revolving Loan Program (Chapter 12:03:03). Roll call vote: Mike Konechne-absent, Gene Williams-aye, Dusty Rodiek-aye, Tom Glover-aye, Doug Hansen-aye, Charlie Moe-absent, Bruce Haines-aye, Dean Odden-aye, Bill Coburn-aye.

**Open Forum and Public Comment:** none

**New Business:** none

**Next Meeting location and place:** The next commission meeting will be in Oacoma on September 19.

**Ending Remarks:** none

**Meeting Adjourned at 10:23 AM CDT.**





# *Upcoming Travel & Meetings*

## September 2022

- \_\_\_\_\_
- \_\_\_\_\_
- \_\_\_\_\_

## October 2022

- Legislative Banquet October 24<sup>th</sup>, 2022 – Webster, SD
- \_\_\_\_\_
- \_\_\_\_\_

## November 2022

- \_\_\_\_\_
- \_\_\_\_\_
- \_\_\_\_\_

## December 2022

- Nonpoint Source Task Force Meeting December 6<sup>th</sup>, - Pierre, SD
- \_\_\_\_\_
- \_\_\_\_\_





**Edmunds County Conservation District**

PO Box 25  
Ipswich, SD 57451  
(605) 426-6701

---

April 25, 2022

SD Dept. of Agriculture  
Resource Conservation & Forestry  
Conservation Commission  
523 E Capitol Ave  
Pierre, SD 57501

Dear Commissioners,

On behalf of the Edmunds County Conservation District and the McPherson County Conservation District, I would like to extend our thanks for your support of the *Cover Crop Initiative* Grant that received funding last week.

In cooperation with our partners, we are excited to offer this opportunity to our producers within the two-county area. With current weather impacts, we are expecting to have producers utilize this program to address soil health by covering the land, protecting against wind erosion, and providing grazing opportunities. As producers are able to experience the benefits firsthand of cover crops, we will follow-up and encourage them to continue to use cover crops on their own as a way to improve soil health in low performing areas of their fields.

Thank you for your time and dedication to the implementation of conservation across the state. Without your support of the conservation commission grant, it would not be possible to aid growers in addressing local resource concerns. Thank you, again.

Sincerely,

A handwritten signature in black ink that reads "Emily Hauck".

Emily Hauck  
Outreach & Resource Development Coordinator  
Edmunds & McPherson County Conservation Districts





## DEPARTMENT of AGRICULTURE and NATURAL RESOURCES

JOE FOSS BUILDING  
523 E CAPITOL AVE  
PIERRE SD 57501-3182  
danr.sd.gov

**To:** South Dakota Conservation Districts  
**From:** South Dakota Department of Agriculture and Natural Resources  
**CC:** South Dakota Conservation Commission, SDACD, Conservation Commission Advisory Members  
**Date:** August 30, 2022  
**Re:** Fall 2022 Grant Round

---

The South Dakota Conservation Commission has scheduled a fall grant round where grant applications will be considered for funding. **Applications must be received by the South Dakota Department of Agriculture and Natural Resources in Pierre by October 3, 2022.**

Additionally, as a result of SB 170 which passed the South Dakota Legislature during the 2022 session, \$100,000 in funding was added to the grant fund "for the purpose of increasing forest resiliency and improving forest growth in this state." While the legislation did not define specific practices, projects should address elements identified in the [South Dakota Forest Action Plan](#) and the Forestry section of the [Coordinated Plan for Natural Resources Conservation](#). Please note that forests exist statewide so all districts are encouraged to apply.

The process, October 3 deadline, and where to submit applications is the same as the regular grant fund application process. **Please indicate in the program description whether you're applying for the resilient forestry or regular grant fund.**

As outlined in the South Dakota Codified Laws and Administrative Rules, the Commission shall consider grant applications on a competitive basis.

**12:03:05:04. Grants to be competitive.** The commission shall consider grant applications on a competitive basis, and no grants may be guaranteed to any district.

You may review our administrative rules here: [DANR Administrative Rule](#)

An application form is available here: [Grant Application Form](#):

The 2022 Commission Docket is posted here: [2022 Commission Docket](#)

Districts should review the Commission's Guidelines when developing their grant applications. Those guidelines are posted here: [Commission Guidelines](#)

Applications must be submitted to the following address:

South Dakota Department of Agriculture and Natural Resources  
Division of Resource Conservation & Forestry  
Attention: Alex Roeber  
523 E. Capitol Avenue  
Pierre, SD 57501

You may also email the applications to: [Alex.Roeber@state.sd.us](mailto:Alex.Roeber@state.sd.us)

Applications must be completed on the new DANR application form and accompanied by a W-9 for the district; a copy of the district board motion of the sponsoring district; and any letters of commitment from partners.

Applications received for the Fall Grant Round will be reviewed by the Conservation Commission at their fall meeting. The date and location of the fall meeting will be decided at the September 19, 2022 Commission Meeting in Oacoma. Typically, the fall grant round is held in Pierre during the month of November each year.



SCHEDULE OF PAYMENTS, CONSERVATION DISTRICT REVOLVING LOAN FUND  
 Scheduled Payments for Fiscal Year 2023  
 (July 1, 2022 through June 30 2023)

Accumulated Interest Since 1965 \$ 210,731.52

Accumulated Loans Since 1965 \$ 2,596,440.54

RCF LOAN NUMBER	AG DEV LOAN NUMBER	DATE OF LOAN	CONSERVATION DISTRICT	PURPOSE OF LOAN	AMOUNT OF ORIGINAL LOAN	Amount of loan with Interest	PAYMENT DUE THIS FISCAL YEAR	MONTH DUE	MONTH PAID	PRINCIPAL PAID	INTEREST PAID	Total Paid	EXTRA PAID	TOTAL CURRENTLY OUTSTANDING
<i>New Loans This Fiscal Year</i>														
None Thus Far														
1080	37-03-01	08/02/2017	Grant	Tractor	\$ 45,585.00	\$ 50,030.96	\$ 9,844.95	07/01/2022	06/29/2022	\$ 9,117.00	\$ 727.95	\$ 9,844.95		\$ 9,571.43
1081	74-04-01	11/15/2018	Hamlin	No-till Drill	\$ 39,890.00	\$ 42,772.05	\$ 8,456.15	07/01/2022	06/21/2022	\$ 8,218.90	\$ 478.15	\$ 8,697.05	\$ 240.90	\$ 7,728.31
1082	35-02-01	06/04/2019	Lincoln	Purchase Drill	\$ 15,000.00	\$ 16,065.36	\$ 3,514.70	05/01/2023						\$ 3,514.70
1084	00-00-0	02/01/2020	Butte	No Till Drill	\$ 40,000.00	\$ 43,670.50	\$ 8,716.00	09/01/2022	08/22/2022	\$ 7,975.00	\$ 741.00	\$ 8,716.00		\$ 17,481.00
1083	00-00-0	02/01/2020	Grant	Drill	\$ 35,000.00	\$ 38,202.50	\$ 7,646.50	02/01/2023						\$ 22,852.00
1085	00-00-0	05/01/2021	Fall River	Haybuster	\$ 10,000.00	\$ 10,761.08	\$ 2,690.27	09/01/2022	08/24/2022	\$ 2,461.98	\$ 228.29	\$ 2,690.27		\$ 5,380.54
1086	00-00-0	05/10/2021	Butte	No Till Drill	\$ 24,500.00	\$ 26,226.89	\$ 5,245.38	09/01/2022	08/22/2022	\$ 4,660.45	\$ 584.93	\$ 5,245.38		\$ 15,736.13
1087	00-00-0	05/21/2021	Day	Tractor	\$ 20,000.00	\$ 26,226.89	\$ 4,274.89	09/01/2022	08/22/2022	\$ 3,798.19	\$ 476.70	\$ 4,274.89		\$ 17,677.11
1088	00-00-0	05/21/2021	Hamlin	Land Roller	\$ 15,000.00	\$ 16,030.77	\$ 3,206.22	09/01/2022	08/12/2022	\$ 3,082.47	\$ 123.75	\$ 3,206.22		\$ 9,618.33
1089	00-00-0	05/21/2021	Kingsbury	Drill	\$ 7,500.00	\$ 8,015.37	\$ 1,603.16	09/01/2022	08/16/2022	\$ 1,424.40	\$ 178.76	\$ 1,603.16		\$ 4,809.05
1090	00-00-1	11/10/2021	Grant	Vehicle Purchase	\$ 45,000.00	\$ 49,913.52	\$ 10,609.71	09/01/2022	08/12/2022	\$ 8,475.96	\$ 2,133.75	\$ 10,609.71		\$ 39,303.81
1091	00-00-2	11/10/2021	Kingsbury	No-Till Drill	\$ 7,500.00	\$ 8,020.60	\$ 1,637.66	07/01/2022	06/21/2022	\$ 1,463.60	\$ 267.19	\$ 3,428.91	\$ 1,698.12	\$ 4,591.69
<b>COLUMN TOTALS</b>					<b>\$ 304,975.00</b>	<b>\$ 335,936.49</b>	<b>\$ 67,445.59</b>			<b>\$ 50,677.95</b>	<b>\$ 5,940.47</b>	<b>\$ 58,316.54</b>	<b>\$ 1,939.02</b>	<b>\$ 158,264.10</b>

**NEW LOANS THIS FISCAL YEAR** \$ -

**PAYMENTS DUE REMAINDER OF YEAR** \$ 11,161.20

Revolving Loan # \_\_\_\_\_

Tillage Program # \_\_\_\_\_

### APPLICATION FOR REVOLVING LOAN and CONSERVATION TILLAGE LOAN

Legal authority: SDCL 38-8-53, 53.1 and 54; and 38-6-8.1, and the Administrative Rules Chapter 12:03:03, and 12:07:01.

The Beadle Conservation District, with headquarters at Huron  South Dakota,

does hereby apply for a loan of \$ 30,000 from the (check all that apply)

Conservation District Revolving Loan Fund

Conservation Tillage Equipment Program

in the State of South Dakota, in accordance with the above stated legal authorities.

Purpose of loan: Purchase a pick up for the district

Payments to begin on: 11/01/2022 Length of Loan: Years, 5 months \_\_\_\_\_

The district understands that the repayment will include principal plus interest at the rate of 3.0% Annual Percentage Rate (APR) for Revolving Loans; and 5.0% Annual Percentage Rate (APR) for Conservation Tillage Equipment Loans, on the unpaid principal balance. There is no penalty for early repayment.

REVOLVING LOAN FUND Proposed Principal Repayment Schedule:		
Date	<u>11/01/2022</u>	Amount \$ <input style="width: 80%;" type="text"/>
Date	<input type="text"/>	Amount \$ <input type="text"/>
Date	<input type="text"/>	Amount \$ <input type="text"/>
Date	<input type="text"/>	Amount \$ <input type="text"/>
Date	<input type="text"/>	Amount \$ <input type="text"/>

CONSERVATION TILLAGE LOAN Proposed Principal Repayment Schedule:		
Date	<input type="text"/>	Amount \$ <input style="width: 80%;" type="text"/>
Date	<input type="text"/>	Amount \$ <input type="text"/>
Date	<input type="text"/>	Amount \$ <input type="text"/>
Date	<input type="text"/>	Amount \$ <input type="text"/>
Date	<input type="text"/>	Amount \$ <input type="text"/>

**INFORMATION ON EQUIPMENT TO BE PURCHASED WITH LOAN FUNDS (if applicable)**

Make of Machine:  Total Cost:   
 Model #:  Serial #:   
 Anticipated Charge:  Anticipated use of machine: Acres:

**EQUIPMENT INSURANCE:**

Insurance Company: SDPAA Amount of comprehensive coverage: 1,000

**NOTE: ARSD 12:03:03:02(9) requires that insurance be carried to cover loss of equipment purchased with loan funds.**

PLEASE CHECK THE APPROPRIATE ANSWER:	
YES <input type="radio"/>	NO <input checked="" type="radio"/> Will this loan be used to pay off or refinance another loan?
YES <input type="radio"/>	NO <input checked="" type="radio"/> Is existing equipment being used as a trade-in?
YES <input type="radio"/>	NO <input checked="" type="radio"/> If yes, is there a current loan on that equipment? Where: _____
YES <input type="radio"/>	NO <input checked="" type="radio"/> Are other lending institutions involved in the acquisition of this equipment?
YES <input type="radio"/>	NO <input checked="" type="radio"/> Has the district already purchased the equipment? If yes, When: _____



**STATEMENT OF FINANCIAL CONDITION AS OF 08/31/2022 . (Or attach current Balance Sheet)**

**ASSETS:**

Cash (deposits, savings, petty cash)	\$	<input type="text"/>
Accounts Receivable (list below)	\$	<input type="text"/>
Equipment (inventory value)	\$	<input type="text"/>
Land & Buildings	\$	<input type="text"/>
Other Assets	\$	<input type="text"/>
<b>TOTAL</b>	\$	<input type="text" value="0.00"/>

**LIABILITIES/EQUITY:**

Vehicle notes payable	\$	<input type="text"/>
Other Accounts Payable (list on separate page)	\$	<input type="text"/>
Equipment notes payable	\$	<input type="text"/>
Land/Building notes payable	\$	<input type="text"/>
<b>TOTAL LIABILITIES</b>	\$	<input type="text" value="0.00"/>
Retained Earnings (equity)	\$	<input type="text"/>
<b>TOTAL LIABILITIES+ EQUITY</b>	\$	<input type="text" value="0.00"/>

**ACCOUNTS RECEIVABLE RECORD AS OF 08/31/2022**

DEBTOR	AMOUNT OF DEBT	DATE DEBT INCURRED	REASON FOR DEBT NOT PAID
Jasen Albrecht	1,653.89		less than 30 days
Brian Baum	900.00		less than 30 days
Chuck Farrey	654.48		less than 30 days
Keith Glanzer	1,320.00		less than 30 days
Eric Gross	3,160.28		less than 30 days
Mike Langbehn	600.00		less than 30 days
Riverside Colony	2797.99		less than 30 days
Dave VanEde	6084.00		less than 30 days

**PROJECTED FINANCIAL STATEMENT (note unusual income or expenditure changes anticipated during the term of the loan):**

**NOTE:**

1. Please attach a copy of the meeting minutes at which the loan application was authorized. These minutes **MUST BE SIGNED** by the District Administrative Secretary.
2. The district agrees to maintain financial records as required by the Conservation Commission and will make those records available to the Commission or Department of Agriculture staff for inspection upon request.
3. The district agrees to submit a statement of usage to the Commission at the time of each payment according to Administration of Revolving Fund Rules - chapter 12:03:03:08.
4. The district must attach a W-9 form to this application.

This application for a loan from the (check all that apply)

- Conservation District Revolving Loan fund
- Conservation Tillage Equipment Loan Program

was approved by the Board of Supervisors of the Beadle Conservation District at a meeting held on 8/4/2022 and is so recorded in the official minutes of the meeting.

ATTEST:

Rabia Vostong  
SECRETARY

Francis J. O'Leary  
CHAIRMAN  
September 1, 2022

Date of Application

**LOAN FINDINGS (DEPARTMENT USE ONLY):**

QUESTIONS	COMMENTS
1. Was the application received by the deadline? Date Received:	Yes No
2. Is the application signed by appropriate persons?	Yes No
3. Is the loan for the appropriate reason (not real estate, computers, etc.)?	Yes No
4. If applicable, is insurance being acquired?	Yes No NA
5. Are minutes attached with applicable motion(s)?	Yes No
6. If no minutes are attached, are they coming? When?	Yes No NA
7. Are minutes official (quorum, no advisors involved in action on motions)?	Yes No
8. Are conservation tillage loan funds being requested?	Yes No
9. Are present loans current?	Yes No NA
10. Were past loans paid off on time?	Yes No NA
11. Is the financial information in the application consistent with that in the district's annual financial report?	Yes No
12. Additional comments	

Division Staff

Date

**THIS PAGE FOR DEPARTMENT USE ONLY**

**CERTIFICATION OF COMMISSION ACTION ON LOAN:**

Approved Revolving Loan	Approved Conservation Tillage
\$ _____	\$ _____
Disapproved Revolving Loan	Disapproved Conserv. Tillage

\_\_\_\_\_  
Conservation Commission Chairman

\_\_\_\_\_  
Date

**CERTIFICATION OF DEPARTMENT ACTION ON CONSERVATION TILLAGE LOAN:**

Approved Conservation Tillage
\$ _____
Disapproved Conservation Tillage

\_\_\_\_\_  
Administrator

\_\_\_\_\_  
Date

## Beadle Conservation District

## Balance Sheet

As of August 31, 2022

09/01/22

Accrual Basis

	<u>Aug 31, 22</u>
<b>ASSETS</b>	
<b>Current Assets</b>	
<b>Checking/Savings</b>	
1000 · BCD General	
1000.1 · Building & Maintenance	10,717.88
1000.2 · Cain Creek Demo Area Acct.	56,054.26
1000.3 · Living Snow Fence Account	8,328.43
1000 · BCD General - Other	<u>-32,257.53</u>
<b>Total 1000 · BCD General</b>	42,843.04
1001.1 · DFCU - Savings	5.00
1001.2 · DFCU - Investors Choice	53,617.43
1002 · Diversity Farm	<u>125.00</u>
<b>Total Checking/Savings</b>	96,590.47
<b>Accounts Receivable</b>	
1200 · Accounts Receivable	<u>20,687.61</u>
<b>Total Accounts Receivable</b>	<u>20,687.61</u>
<b>Total Current Assets</b>	117,278.08
<b>Fixed Assets</b>	
1401 · Inventory	160.00
1600 · Land	
1600.1 · Land OC	<u>120,545.00</u>
<b>Total 1600 · Land</b>	120,545.00
1601 · Lincoln Avenue Land	92,967.28
1602 · Dale Farm	
1602.1 · Dale Farm OC	<u>1,500,000.00</u>
<b>Total 1602 · Dale Farm</b>	1,500,000.00
1610 · Building - Quonset	
1610.1 · Building - Quonset OC	2,938.00
1710.1 · Building - Quonset AD	<u>-2,358.00</u>
<b>Total 1610 · Building - Quonset</b>	580.00
1611 · Cold Storage	
1611.1 · Cold Storage OC	584.00
1711.1 · Cold Storage AD	<u>-584.00</u>
<b>Total 1611 · Cold Storage</b>	0.00
1620 · 1985 Chevrolet Truck	
1620.1 · 1985 Chevrolet Truck OC	3,099.00
1620 · 1985 Chevrolet Truck - Other	<u>-3,099.00</u>
<b>Total 1620 · 1985 Chevrolet Truck</b>	0.00
1622 · Ford Pickup 1998	
1622.1 · Ford Pickup 1998 OC	13,300.00
1722.1 · Ford Pickup 1998 AD	-11,000.00
1622 · Ford Pickup 1998 - Other	<u>-2,300.00</u>
<b>Total 1622 · Ford Pickup 1998</b>	0.00
1623 · 1999 Ford Crew Cab	
1623.1 · 1999 Ford Crew Cab OC	17,950.00
1723.1 · 1999 Ford Crew Cab AD	<u>-14,450.00</u>
<b>Total 1623 · 1999 Ford Crew Cab</b>	3,500.00

## Beadle Conservation District

## Balance Sheet

As of August 31, 2022

09/01/22

Accrual Basis

	<u>Aug 31, 22</u>
1624 · 2008 Dodge Hemi	
1724.1 · 2008 Dodge Hemi AD	-15,000.00
1624 · 2008 Dodge Hemi - Other	20,000.00
	<hr/>
Total 1624 · 2008 Dodge Hemi	5,000.00
1655 · Trailer	
1655.1 · Trailer OC	1,939.00
1655 · Trailer - Other	-1,939.00
	<hr/>
Total 1655 · Trailer	0.00
1659 · JD 5420 Tree Tractor	
1659.1 · JD 5420 Tree Tractor OC	27,411.00
1759.1 · JD 5420 Tree Tractor AD	-12,000.00
	<hr/>
Total 1659 · JD 5420 Tree Tractor	15,411.00
1660 · Burdick Tree Planter	
1660.1 · Burdick Tree Planter OC	6,850.00
1760.1 · Burdick Tree Planter AD	-6,000.00
	<hr/>
Total 1660 · Burdick Tree Planter	850.00
1661 · Kodiak 7ft Mower	
1661.1 · Kodiak 7Ft Mower OC	3,195.00
1761.1 · Kodiak 7 Ft. Mower AD	-2,236.50
	<hr/>
Total 1661 · Kodiak 7ft Mower	958.50
1662 · McIlravy Mesh Machine	
1662.1 · McIlravy Mesh Machine OC	2,628.00
1762.1 · McIlravy Mesh Machine AD	-2,400.00
	<hr/>
Total 1662 · McIlravy Mesh Machine	228.00
1664 · JD 5420 Fabric Tractor	
1664.1 · JD 5420 Fabric Tractor OC	27,500.00
1764.1 · JD 5420 Fabric Tractor AD	-12,000.00
	<hr/>
Total 1664 · JD 5420 Fabric Tractor	15,500.00
1665 · Delta 25 Foot Fabric Trailer	
1665.1 · Delta 25 Foot Fabric Trailer OC	4,155.00
1765.1 · Delta 25 Foot Fabric Trailer AD	-2,250.00
	<hr/>
Total 1665 · Delta 25 Foot Fabric Trailer	1,905.00
1666 · Delta 28 FT Tree Trailer	
1766.1 · Delta 28 FT Tree Trailer AD	-4,235.00
1666 · Delta 28 FT Tree Trailer - Other	6,050.00
	<hr/>
Total 1666 · Delta 28 FT Tree Trailer	1,815.00
1667 · Great Plains Drill	
1667.1 · Great PLains Drill OC	46,500.00
1767.1 · Great Plains Drill AD	-37,200.00
	<hr/>
Total 1667 · Great Plains Drill	9,300.00
1668 · 2007 Chevy Pick-up	
1768.1 · 2007 Chevy Pickup OD	-3,000.00
1668 · 2007 Chevy Pick-up - Other	3,000.00
	<hr/>
Total 1668 · 2007 Chevy Pick-up	0.00
1669 · Interseeder	
1669.1 · Interseeder OC	35,000.00
1769.1 · Interseeder OD	-21,000.00
	<hr/>
Total 1669 · Interseeder	14,000.00

## Beadle Conservation District

## Balance Sheet

As of August 31, 2022

09/01/22

Accrual Basis

	<u>Aug 31, 22</u>
1670 · Hyster Forklift	
1670.1 · Hyster Forklift OC	3,800.00
1770.1 · Hyster Forklift AD	-1,900.00
	<hr/>
Total 1670 · Hyster Forklift	1,900.00
1671 · John Deere Batwing Mower	
1671.1 · 2017 JD 15ft Batwing Mower OC	16,500.00
1771.1 · 2017 JD 15ft Batwing Mower AD	-6,600.00
1671 · John Deere Batwing Mower - Other	-1,650.00
	<hr/>
Total 1671 · John Deere Batwing Mower	8,250.00
1691 · Nakajima Typewriter	
1691.1 · Nakajima Typewriter OC	291.00
1791.1 · Nakajima Typewriter AD	-291.00
	<hr/>
Total 1691 · Nakajima Typewriter	0.00
Total Fixed Assets	<hr/> 1,792,869.78
<b>TOTAL ASSETS</b>	<b><hr/><hr/>1,910,147.86</b>
<b>LIABILITIES &amp; EQUITY</b>	
Liabilities	
Current Liabilities	
Accounts Payable	
2003 · *Accounts Payable	42,179.42
	<hr/>
Total Accounts Payable	42,179.42
Other Current Liabilities	
2021 · Health Insurance Payable	-2,811.98
2100 · Sales Tax Payable	-3.80
2300 · Payroll Liabilities	40,696.38
	<hr/>
Total Other Current Liabilities	37,880.60
Total Current Liabilities	<hr/> 80,060.02
Total Liabilities	80,060.02
Equity	
3000 · Opening Bal Equity	1,870,140.68
3900 · Retained Earnings	-23,167.61
Net Income	-16,885.23
	<hr/>
Total Equity	1,830,087.84
<b>TOTAL LIABILITIES &amp; EQUITY</b>	<b><hr/><hr/>1,910,147.86</b>

BEADLE CONSERVATION DISTRICT BOARD OF SUPERVISORS MEETING  
AUGUST 4, 2022 @ 7 pm with Fran Fritz presiding.

---

Board of Supervisors Present:

Fran Fritz, Chairman  
Russ Layton, Vice-Chairman  
Mark Goldammer, Treasurer  
Dennis Olson, SUPERVISOR  
SCOTT HAMILTON, SUPERVISOR  
DARRELL RASCHKE, ADVISOR

Others Present:

Robin Viestenz, District Manager  
Kent Vlieger, SD State Soil Health Specialist  
Brad Biermann, Acting District Conservationist  
Pam Layton

MEETING CALLED TO ORDER BY: Fran Fritz @ 7:01 pm

REQUEST FOR NEW BUSINESS TO BE PLACED ON AGENDA (discussion only):

AGENDA FOR APPROVAL: Mark Goldammer made a motion to approve agenda. Russ Layton seconded the motion. Motion carried.

MINUTES OF REGULAR JULY BOARD MEETING: Russ Layton made a motion to approve minutes. Dennis Olson seconded the motion. Motion carried.

MINUTES OF JULY FARM BOARD MEETING: Dennis Olson made a motion to approve minutes. Russ Layton seconded the motion. Motion carried.

PUBLIC COMMENT:

FINANCIAL REPORT:

APPROVAL OF ACCOUNTS PAYABLE: Dennis Olson made a motion to approve accounts payable. Russ Layton seconded the motion. Motion carried.

SUPERVISORS REPORT:

DALE FARM REPORT: Mark Goldammer made a motion to discuss proposed 2023 lease. Dennis Olson seconded the motion. Mark Goldammer moved to amend the motion to table discussion. Russ Layton seconded the motion. Motion carried.

CAIN CREEK REPORT: Russ Layton made a motion to discuss proposed 2023 lease. Mark Goldammer seconded the motion. Scott Hamilton moved to amend the motion to table discussion. Mark Goldammer seconded the motion. Motion carried.

BEADLE CD FARM REPORT:

**MANAGERS REPORT:** Resource concerns need to be filled out and returned; Convention – South James Missouri area hosting 2022 convention. Mark Goldammer made a motion to provide the required \$150 of hosting districts. Scott Hamilton seconded the motion. Motion carried. Mark Goldammer made a motion to provide an auction item for convention. Scott Hamilton seconded the motion.

**FIELD REPORTS:** 2023 tree plantings – already over 50 acres; seeding approx. 300 ac; mowing approx. 450 ac.

**NRCS REPORT/NEW CONTRACTS:** CRP Re-enrolls: #1200 – 60.07ac duck nesting habitat; #1201 – 78.07ac wetland restoration; #1202 – 5.9 ac wetland restoration; #1203 – 9.49ac wetland restoration; #1204 – 20.7 ac field buffers; #1205 – 15.78 ac field border; #1206 – 3.46 ac trees; #1207 – 20.01ac wetland restoration; #1208 – cp30 – 1.70 ac; #1209 – CP30 19.9ac; #1210 – 5.04 ac wetland restoration; #1211 – 81.03 ac duck nesting habitat; #1212 – 2.38ac trees; #1213 – 6.07ac trees; #1214 – 10.05 ac wetland restoration; #1215 – 59.40ac wetland restoration; #1216 – 0.82ac trees; #1217 – 138.07 duck nesting habitat; #1218 – 196.02 ac wetland restoration; #1219 – 97.48 ac wetland restoration; #1220-97.48 ac wetland restoration; #1221 – 6.96 ac wetland restoration; #1222 - 80.0ac wetland restoration; #1223 – 23.68 ac wetland restoration; #1224 – 2.23ac trees; #1225 – 71.19 ac wetland restoration; #1226 – 60.03 ac wetland restoration; #1227 – 93.63 ac wetland restoration; #1228 – 12.96 ac wetland restoration; #1229 – 20.99 ac wetland restoration; #1230 – 9.02 ac wetland restoration. Mark Goldammer moved to approve contracts. Russ Layton seconded the motion. Motion carried.

**PRICE LIST:** Dennis Olson made a motion to approve price increases for 2023. Mark Goldammer seconded the motion. Motion carried.

**ADDITIONAL PICKUPS:** Mark Goldammer made a motion to apply for a \$30,000 loan through the state revolving loan fund for purchase of a pick up. Russ Layton seconded the motion. Motion carried.

**EXECUTIVE SESSION:**

**ADJOURNMENT:** Chairman Fran Fritz adjourned the meeting at 10:15 pm. The next regular board meeting will be held September 8th, 2022 at 7pm.

Robin Viestenz  
Recorder







**Codington County Conservation District**

1720 4<sup>th</sup> St NE, Suite #3  
Watertown, SD 57201  
Phone: 605-882-4989 ext 3

August 31, 2022

SD Dept of Agriculture & Natural Resources

Dear Timothy Schoonhoven and the SD Conservation Commission:

The Codington Conservation District is applying for a loan of \$45,950 through the revolving loan fund to purchase a new compressor for the tree cooler and to refinance a vehicle loan.

This spring on my way to pick up trees our 2001 Chevrolet Pickup experienced engine trouble. It ended up needing a new motor at a cost of \$6,331.76. That was our newest vehicle and not knowing how long the repairs would take and the fact it was the beginning of tree season we had to purchase a replacement vehicle. We found a used pickup for \$34,999 and paid a down payment of \$7,049. We were able to borrow the remaining \$27,950 from a local bank at an interest rate of 4.5% with semi-annual payments. This was an unexpected expense at an extremely busy time of year. We are asking to be able to refinance that loan through the fund.

The District Board has received a quote from a local dealer for a compressor unit in the amount of \$17,416.97 not including electrical work. A down payment of \$8,700 has been requested by the dealer; we currently don't have the funds to upgrade the unit that is 30+ years old and runs on out-of-date freon. Since I started July of 2020, we have had to spend \$2400 on R-22 refrigerant and \$833.69 on service calls. We are in dire need of a more modern compressor.

We have our next board meeting September 12<sup>th</sup>. At that time, we will be able to submit the meeting minutes and appropriate signatures required. I am beginning my third year as District Manager, and this is my first loan request. I have spent many hours trying to get our equipment repaired so we have working equipment in addition to adding services to increase our income. We receive no county funding, so this has been a challenging 2 years.

The Codington County District Board of Supervisors is hoping the Conservation Commission allows the funding request to be approved.

Thank you for your time and consideration on this matter. (over)

*Deanna Kunkel* - District Manager,  
On behalf of the Codington Conservation District Board of Supervisors

Codington County Conservation District  
1720 4<sup>th</sup> St NE, Suite #3  
Watertown, SD 57201  
(605) 882-4989 ext 3  
Codingtoncd2@sdconservation.net

Codington Conservation District Board:

Ken Bunde, Chairman  
Bonnie Oletzke, Vice-Chair  
Ben Schleusner, Supervisor  
Dan, Kahnke, Supervisor  
Mike Paulsen, Supervisor

Revolving Loan # \_\_\_\_\_  
 Tillage Program # \_\_\_\_\_

### APPLICATION FOR REVOLVING LOAN and CONSERVATION TILLAGE LOAN

Legal authority: SDCL 38-8-53, 53.1 and 54; and 38-6-8.1, and the Administrative Rules Chapter 12:03:03, and 12:07:01.  
 The Codington Conservation District, with headquarters at Watertown  South Dakota,  
 does hereby apply for a loan of \$ 27,950 from the (check all that apply)

- Conservation District Revolving Loan Fund
- Conservation Tillage Equipment Program

in the State of South Dakota, in accordance with the above stated legal authorities.

Purpose of loan: refinance pickup purchase made in May under emergency circumstances

Payments to begin on: 12/01/2022 Length of Loan: Years, 5 months \_\_\_\_\_

**The district understands that the repayment will include principal plus interest at the rate of 3.0% Annual Percentage Rate (APR) for Revolving Loans; and 5.0% Annual Percentage Rate (APR) for Conservation Tillage Equipment Loans, on the unpaid principal balance. There is no penalty for early repayment.**

REVOLVING LOAN FUND Proposed Principal Repayment Schedule:	
Date <u>12/01/2022</u> Amount \$	<u>5,590</u>
Date <u>12/01/2023</u> Amount \$	<u>5,590</u>
Date <u>12/01/2024</u> Amount \$	<u>5,590</u>
Date <u>12/01/2025</u> Amount \$	<u>5,590</u>
Date <u>12/01/2026</u> Amount \$	<u>5,590</u>

CONSERVATION TILLAGE LOAN Proposed Principal Repayment Schedule:	
Date _____ Amount \$	_____
Date _____ Amount \$	_____
Date _____ Amount \$	_____
Date _____ Amount \$	_____
Date _____ Amount \$	_____

**INFORMATION ON EQUIPMENT TO BE PURCHASED WITH LOAN FUNDS (if applicable)**

Make of Machine: 2016 Chevrolet Total Cost: 27,950  
 Model #: Silverado 2500 Crew WT Serial #: 1GC15UEG0GF168028  
 Anticipated Charge: \_\_\_\_\_ Anticipated use of machine: Acres: \_\_\_\_\_

**EQUIPMENT INSURANCE:**

Insurance Company: SDPAA Amount of comprehensive coverage: 35,000

**NOTE:** ARSD 12:03:03:02(9) requires that insurance be carried to cover loss of equipment purchased with loan funds.

**PLEASE CHECK THE APPROPRIATE ANSWER:**

YES  NO  Will this loan be used to pay off or refinance another loan?

YES  NO  Is existing equipment being used as a trade-in?

YES  NO  If yes, is there a current loan on that equipment? Where: Reliabank, Watertown SD

YES  NO  Are other lending institutions involved in the acquisition of this equipment?

YES  NO  Has the district already purchased the equipment? If yes, When: May 2022

Revolving Loan # \_\_\_\_\_  
 Tillage Program # \_\_\_\_\_

### APPLICATION FOR REVOLVING LOAN and CONSERVATION TILLAGE LOAN

Legal authority: SDCL 38-8-53, 53.1 and 54; and 38-6-8.1, and the Administrative Rules Chapter 12:03:03, and 12:07:01.  
 The Codington Conservation District, with headquarters at Watertown  South Dakota,  
 does hereby apply for a loan of \$ 18,000 from the (check all that apply)

- Conservation District Revolving Loan Fund
- Conservation Tillage Equipment Program

in the State of South Dakota, in accordance with the above stated legal authorities.

Purpose of loan: Purchase new compressor unit for our cooler

Payments to begin on: 12/01/2022 Length of Loan: Years, 5 months \_\_\_\_\_

The district understands that the repayment will include principal plus interest at the rate of 3.0% Annual Percentage Rate (APR) for Revolving Loans; and 5.0% Annual Percentage Rate (APR) for Conservation Tillage Equipment Loans, on the unpaid principal balance. There is no penalty for early repayment.

REVOLVING LOAN FUND Proposed Principal Repayment Schedule:	
Date <u>12/01/2022</u>	Amount \$ <input type="text"/>
Date <input type="text"/>	Amount \$ <input type="text"/>
Date <input type="text"/>	Amount \$ <input type="text"/>
Date <input type="text"/>	Amount \$ <input type="text"/>
Date <input type="text"/>	Amount \$ <input type="text"/>

CONSERVATION TILLAGE LOAN Proposed Principal Repayment Schedule:	
Date <input type="text"/>	Amount \$ <input type="text"/>
Date <input type="text"/>	Amount \$ <input type="text"/>
Date <input type="text"/>	Amount \$ <input type="text"/>
Date <input type="text"/>	Amount \$ <input type="text"/>
Date <input type="text"/>	Amount \$ <input type="text"/>

**INFORMATION ON EQUIPMENT TO BE PURCHASED WITH LOAN FUNDS (if applicable)**

Make of Machine: Chandler out door cond unit Total Cost: 18,000  
 Model #: 208/2300 1PH Serial #:   
 Anticipated Charge: 18000 Anticipated use of machine: Acres:

**EQUIPMENT INSURANCE:**

Insurance Company: SDPAA Amount of comprehensive coverage: 18,000

**NOTE:** ARSD 12:03:03:02(9) requires that insurance be carried to cover loss of equipment purchased with loan funds.

PLEASE CHECK THE APPROPRIATE ANSWER:	
YES <input type="radio"/> NO <input checked="" type="radio"/>	Will this loan be used to pay off or refinance another loan?
YES <input type="radio"/> NO <input checked="" type="radio"/>	Is existing equipment being used as a trade-in?
YES <input type="radio"/> NO <input checked="" type="radio"/>	If yes, is there a current loan on that equipment? Where: _____
YES <input type="radio"/> NO <input checked="" type="radio"/>	Are other lending institutions involved in the acquisition of this equipment?
YES <input type="radio"/> NO <input checked="" type="radio"/>	Has the district already purchased the equipment? If yes, When: _____

# Proposal



519 West Kemp P.O. Box 526  
Watertown, SD 57201

24 Hour Emergency Service  
(605) 886-9717

*copy*

PROPOSAL SUBMITTED TO <i>Tire Cooler</i>		PHONE	DATE <i>27 Oct 22</i>
STREET		JOB NAME	
CITY, STATE, and ZIP CODE		JOB LOCATION	
ARCHITECT	DATE OF PLANS	JOB PHONE	

**We Propose** hereby to furnish material and labor -- complete in accordance with specifications below, for the sum of:

dollars (\$ \_\_\_\_\_)

Payment to be made as follows:

*\$8,700<sup>00</sup> Down on order*

All material is guaranteed to be as specified. All work to be completed in a workmanlike manner according to standard practices. Any alteration or deviation from specifications below involving extra costs will be executed only upon written orders, and will become an extra charge over and above the estimate. All agreements contingent upon strikes, accidents, or delays beyond our control. Owner to carry fire, tornado, and other necessary insurance. Our workers are fully covered by Workman's Compensation Insurance.

Authorized Signature \_\_\_\_\_

Note:

This proposal may be withdrawn by us if not accepted within \_\_\_\_\_ days.

We hereby submit specifications and estimates for:

*1 chandler out door Cond. Unit. 208/230V 1PH  
4 year Extension warranty on Comp.  
1 chandler Low profile exp Coil 115V Air defrost  
TKU, LLSU, t-stat*

*All equipment installed, copper pipe + freon.*

*NO Electrical*

*\$17,416<sup>97</sup>  
+ Ex TAX  
+ freight.*

**Acceptance of Proposal** — The above prices, specifications, and conditions are satisfactory and are hereby accepted. You are authorized to do the work as specified. Payment will be made as outlined above.

Signature: \_\_\_\_\_

Date of Acceptance: \_\_\_\_\_

Signature: \_\_\_\_\_

STATEMENT OF FINANCIAL CONDITION AS OF 08/31/2022 . (Or attach current Balance Sheet)

**ASSETS:**

Cash (deposits, savings, petty cash)	\$	18,644.00
Accounts Receivable (list below)	\$	35,078.00
Equipment (inventory value)	\$	260,000.00
Land & Buildings	\$	110,000.00
Other Assets	\$	10,000.00
<b>TOTAL</b>	\$	<b>433,722.00</b>

**LIABILITIES/EQUITY:**

Vehicle notes payable	\$	27,950.00
Other Accounts Payable (list on separate page)	\$	0.00
Equipment notes payable	\$	0.00
Land/Building notes payable	\$	0.00
<b>TOTAL LIABILITIES</b>	\$	<b>27,950.00</b>
Retained Earnings (equity)	\$	405,772.00
<b>TOTAL LIABILITIES+ EQUITY</b>	\$	<b>433,722.00</b>

ACCOUNTS RECEIVABLE RECORD AS OF 08/31/2022

DEBTOR	AMOUNT OF DEBT	DATE DEBT INCURRED	REASON FOR DEBT NOT PAID
Various Producers	35000	06/11/2022	summer billings

PROJECTED FINANCIAL STATEMENT (note unusual income or expenditure changes anticipated during the term of the loan):

*Nothing major, hoping to increase income*

**NOTE:**

1. Please attach a copy of the meeting minutes at which the loan application was authorized. These minutes **MUST BE SIGNED** by the District Administrative Secretary. *-forthcoming*
2. The district agrees to maintain financial records as required by the Conservation Commission and will make those records available to the Commission or Department of Agriculture staff for inspection upon request.
3. The district agrees to submit a statement of usage to the Commission at the time of each payment according to Administration of Revolving Fund Rules - chapter 12:03:03:08.
4. The district must attach a W-9 form to this application.

**Codington Conservation District**  
**A/R Aging Summary**  
 As of August 31, 2022

	Current	1 - 30	31 - 60	61 - 90	> 90	TOTAL
Big Sioux Nursery-Wtn	0.00	604.00	0.00	0.00	0.00	604.00
Boettcher, Brenda	0.00	0.00	0.00	0.00	247.61	247.61
Bunde, Kip	0.00	0.00	0.00	7,193.20	0.00	7,193.20
Carter, Milt	0.00	0.00	0.00	51.01	206.47	257.48
Coplan, Joe	0.00	0.00	1,256.00	0.00	0.00	1,256.00
Dagel, Karla	0.00	0.00	276.90	0.00	1.22	278.12
Derek's	0.00	0.00	0.00	0.00	639.00	639.00
Even, Charlie	0.00	0.00	0.00	-4,511.92	0.00	-4,511.92
Fish, Leon	0.00	0.00	0.00	0.00	-14.65	-14.65
Flemming, Craig	520.00	0.00	0.00	0.00	2,733.20	3,253.20
Gregerson, Jay	0.00	31.95	0.00	0.00	0.00	31.95
Hamlin Conservation District	81.47	0.00	0.00	0.00	0.00	81.47
Hawley, Michael	0.00	0.00	0.00	1.38	0.00	1.38
Johnson, Ronald	0.00	570.00	0.00	0.00	0.00	570.00
Kienast, Mark	0.00	0.00	464.00	0.00	0.00	464.00
Kittelson, John	85.20	0.00	0.00	1,980.20	0.00	2,065.40
Konrad, Josh	0.00	0.00	0.00	0.00	-0.42	-0.42
Kunkel, Marilyn	0.00	26.63	0.00	0.00	0.00	26.63
Little, David	400.00	0.00	0.00	0.00	0.00	400.00
Lowe, Lonnie	0.00	0.00	330.00	61.77	0.00	391.77
Meland, Nathan	0.00	0.00	0.00	1,514.84	0.00	1,514.84
Morrison, Ed	0.00	0.00	0.00	0.00	0.61	0.61
Murphy, Dan	0.00	0.00	600.00	0.00	0.00	600.00
Nogelmeier, Lucas	0.00	0.00	0.00	0.00	702.90	702.90
Raderschadt, Dan	0.00	0.00	0.00	0.00	1,991.55	1,991.55
Radtke, Jerome	0.00	561.50	0.00	0.00	0.00	561.50
Rawlins, Mike	0.00	0.00	1,539.10	0.00	0.00	1,539.10
RBM LIVESTOCK	0.00	0.00	580.00	0.00	0.00	580.00
Roe, Allen	0.00	0.00	0.00	1,584.08	0.00	1,584.08
Schaack, Jeff	0.00	1,300.00	0.00	0.00	0.00	1,300.00
Sebek, Andrew	0.00	0.00	0.00	63.90	0.00	63.90
Sioux River Dairy	0.00	596.00	0.00	0.00	0.00	596.00
Stricherz, Clyde	0.00	0.00	0.00	3,885.60	0.00	3,885.60
Wensing, Jeff	0.00	13.00	0.00	0.00	0.00	13.00
Whittnebel, Barrett	0.00	192.36	0.00	0.00	5,132.26	5,324.62
Wilkens, Wes	0.00	0.00	0.00	58.53	0.00	58.53
Zaug, Doug	0.00	0.00	0.00	0.00	1,527.26	1,527.26
<b>TOTAL</b>	<b>1,086.67</b>	<b>3,895.44</b>	<b>5,046.00</b>	<b>11,882.59</b>	<b>13,167.01</b>	<b>35,077.71</b>



This application for a loan from the (check all that apply)

- Conservation District Revolving Loan fund
- Conservation Tillage Equipment Loan Program

was approved by the Board of Supervisors of the Codington Conservation District at a meeting held on 9/12/2022 and is so recorded in the official minutes of the meeting.

ATTEST:

Deanna Kunkel  
SECRETARY

CHAIRMAN  
9/1/2022  
Date of Application

=====

**LOAN FINDINGS (DEPARTMENT USE ONLY):**

QUESTIONS	COMMENTS
1. Was the application received by the deadline? Date Received:	Yes No
2. Is the application signed by appropriate persons?	Yes No
3. Is the loan for the appropriate reason (not real estate, computers, etc.)?	Yes No
4. If applicable, is insurance being acquired?	Yes No NA
5. Are minutes attached with applicable motion(s)?	Yes No
6. If no minutes are attached, are they coming? When?	Yes No NA
7. Are minutes official (quorum, no advisors involved in action on motions)?	Yes No
8. Are conservation tillage loan funds being requested?	Yes No
9. Are present loans current?	Yes No NA
10. Were past loans paid off on time?	Yes No NA
11. Is the financial information in the application consistent with that in the district's annual financial report?	Yes No
12. Additional comments	

\_\_\_\_\_  
Division Staff

\_\_\_\_\_  
Date

**THIS PAGE FOR DEPARTMENT USE ONLY**

**CERTIFICATION OF COMMISSION ACTION ON LOAN:**

Approved Revolving Loan	Approved Conservation Tillage
\$ _____	\$ _____
Disapproved Revolving Loan	Disapproved Conserv. Tillage

\_\_\_\_\_  
Conservation Commission Chairman

\_\_\_\_\_  
Date

**CERTIFICATION OF DEPARTMENT ACTION ON CONSERVATION TILLAGE LOAN:**

Approved Conservation Tillage
\$ _____
Disapproved Conservation Tillage

\_\_\_\_\_  
Administrator

\_\_\_\_\_  
Date





CLEAN. CLEAR. CONSERVATION.

1837 5TH AVENUE  
BELLE FOURCHE, SD 57717  
605-892-3368 EXT. 3 PH.  
855-254-6028 FX.

August 15, 2022

South Dakota Conservation Commission  
523 E Capitol Avenue  
Pierre, SD 57501

Conservation Commission:

Butte Conservation District is requesting an extension for the SD Envirothon Grant (2021-CSW-004). This grant was awarded for a two-year term to fully encompass the school year and summer competition, we are asking that it be extended for that two-year term to end 12/31/2024. The SD Envirothon until recently had no coordinator and due to COVID restrictions unable to do outreach, gather for workshops or hold competitions.

The 2021 International competition was held virtually from Nebraska and 2022 was finally held face to face in Oxford, Ohio. We used this time wisely to develop the structure of SD Envirothon Inc., forming a board, creating by-laws, receiving 501c3 non-profit status and finally finding a coordinator to grow the program across South Dakota. The new coordinator, Marne Lammle, was able to attend the competition in Ohio to gain knowledge from other coordinators and see firsthand how the competition is produced.

Thank you for your consideration.

Sincerely,

A handwritten signature in blue ink, appearing to read "Tim Reich", is written over a horizontal line.

Tim Reich, Chairman  
Butte Conservation District





Davison Conservation District  
1820 N. Kimball St., Suite B  
Mitchell, SD 57301  
605-996-1564 Ext. 3

August 17, 2022

State Conservation Commission-

Please consider a proposed amendment to **Grant#2022-CSW-027 Cover Crop-Grazing** by the Davison Conservation District. There was an error on the original grant for administration fees. It was put under Consultation Services (A) instead of under the activity budget (B). We would like to ask for \$1,000 with \$1,000 match. Thank you for your consideration.

A handwritten signature in black ink, appearing to read "Matt Hayes".

Matt Hayes  
District Manager  
Davison Conservation District



# SOUTH DAKOTA DEPARTMENT OF AGRICULTURE AND NATURAL RESOURCES

## RESOURCE CONSERVATION AND FORESTRY DIVISION

523 East Capitol Avenue

Pierre, SD 57501

Phone: 605.773.3623 Fax: 605.773.3481

sdda.sd.gov

### GRANT APPLICATION FORM

#### Applicant Information

Organization: Davison Conservation District Mailing Address: 1820 N Kimball St Suite B  
Telephone: (605) 996-1564 ext 3 City: Mitchell State: SD Zip: 57301  
Tax Status: \_\_\_\_\_

#### Project Contact

Project Officer: Matt Hayes Telephone: (605) 996-1564 ext 3  
Fax: (855) 256-2557 Email: matthew.hayes2@sd.nacdnet.net

#### Project Information

Project Name: Cover Crop/Grazing  
Start Date: 05/01/22 End Date: 12/31/22  
Legal description: County Davison  
Township: \_\_\_\_\_ Range: \_\_\_\_\_  
Section: \_\_\_\_\_ Qtr: \_\_\_\_\_

#### Type of Grant

- Conservation Grant  Community Forestry
- Insect/Disease  Invasive Species
- Forest Stewardship  Mountain Pine Beetle
- Other (specify): \_\_\_\_\_

#### Financial Information

Grant funds requested: 15615.44 Partner contributions (total): 15615.44 Total project cost: 31230.88

Please provide a brief, descriptive summary of the project:

There is a need for financial assistance to implement conservation practices that are not eligible for any other cost share program, either because of lack of funding or eligibility requirements. Due to the high cost often associated with installing conservation practices, many land owners and operators will be unable to install practices needed to address soil erosion, water quality, livestock grazing, and other resource concerns unless alternative funding is available.

We currently have 6 producers wanting to plant cover crops, but were unable to get funding.

I hereby certify that to the best of my knowledge and belief, this application is true and correct. I further agree to comply with the provisions of the Civil Rights Act of 1964 and regulations issued thereunder relating to nondiscrimination in federally assisted programs.

Applicant Signature [Signature] Title District Manager Date 2/18/22 8/17/22

A copy of the state required [W-9 form](#) must be attached to this application.

SD EForm - 0549 V4

#### OFFICE USE ONLY

Signature of Reviewer \_\_\_\_\_ Title \_\_\_\_\_ Date \_\_\_\_\_

Signature of Approval \_\_\_\_\_ Title \_\_\_\_\_ Date \_\_\_\_\_

## BUDGET SHEET

The total for each of these three sections should equal the "Total Project Cost" on page 1.

### A. Operating Budget

1.	Salary/Benefits . . . . .		
2.	Travel . . . . .		
3.	Contractual Services . . . . .	31230.88	
4.	Supplies . . . . .		
5.	Equipment (list major equipment) . . . . .		
6.	Consultation Services . . . . .		
<b>Total Project Costs . . . . .</b>		<b>31230.88</b>	This total must equal <u>31230.88</u>

### B. Activity Budget

	Activity	Grant Funds	Local Funds	Local In-Kind	Other Funds	Total
1.	Seed & Drilling	14615.44	14615.44			29230.88
2.	Administration	1000	1000			2000
3.	_____					0
4.	_____					0
5.	_____					0
6.	_____					0
7.	_____					0
8.	_____					0
<b>Totals</b>		<b>15615.44</b>	<b>15615.44</b>	<b>0</b>	<b>0</b>	<b>31230.88</b>
<b>This total must equal</b>						<b>31230.88</b>

### C. Project Partners

	Partners	Amount Cash	Amount In-Kind	Total
1.	RC&F	15615.44		15615.44
2.	Landowners	15615.44		15615.44
3.	_____			0
4.	_____			0
5.	_____			0
6.	_____			0
7.	_____			0
8.	_____			0
<b>Totals</b>		<b>31230.88</b>	<b>0</b>	<b>31230.88</b>
<b>This total must equal</b>				<b>31230.88</b>

Please send application and attachments to the South Dakota Department of Agriculture and Natural Resources.







## KINGSBURY CONSERVATION DISTRICT

120 2<sup>nd</sup> Street Southeast  
P.O. Box 85  
De Smet, South Dakota 57231  
605-854-3183  
[kingsburycd@sdconservation.net](mailto:kingsburycd@sdconservation.net)

Board of Supervisors  
Alan Vedvei – Chairman  
Erland Weerts – Vice Chairman  
Charlie Soefing – Secretary  
Rich Abrahamson- Supervisor  
Rob Lee – Supervisor

August 31<sup>st</sup>, 2022

Dear State Conservation Commissioners:

The Kingsbury Conservation District is respectfully requesting to amend the grant #2022-CSW-017.

Due to the current weather conditions we have been encouraged by our local livestock owners to request cost share for grazing management issues. Funding would allow us to assist livestock operators with unique needs for grass seeding, pipeline, tanks, rural water hookup, dugout construction, and fencing needs. The District is requesting to implement a cost-share program to help offset overwhelming input expenses.

We are grateful for the continued support from the Department of Natural Resources as this funding will allow Kingsbury County land owners to preserve their land.

Sincerely,

*Jamie Forbes*

Office Manager

Kingsbury Conservation District

**Clean. Clear. Conservation.**

## SECTION D. – C. PROJECT PARTNERS:

**Project Narrative Instructions:** (Total narrative should not exceed three pages of single-spaced text. Please attach any maps, figures and photographs you feel are valuable in explaining the project.)

### INSTRUCTIONS

**Complete the following section for Coordinated Natural Resources Conservation Grants**

**NOTE: Any practice funded by the Coordinated Natural Resources Conservation Grant funds must meet one or more goals of the Coordinated Soil & Water Conservation Plan.**

#### D. Project Description and Need

-Kingsbury Conservation District proposes replacing shelterbelts in Kingsbury County locations where the current shelterbelts are no longer providing shelter for wild life and are no longer saving the soil from wind and soil erosion. We are also looking to establish new windbreak and shelterbelt plantings for producers in Kingsbury County.

*\*Due to the current weather conditions we have been encouraged by local livestock owners to request cost share for grazing management issues. Funding would allow us to assist livestock operators with unique needs for grass seeding, pipeline, tanks, rural water hookup, dugout construction, and fencing needs.*

- Explain who will be the primary beneficiaries of this project (who will receive the benefits when this project is complete) Land owners and the land itself, State of South Dakota, by improving on the land value for future generations.

*\*Kingsbury County landowners are the primary beneficiaries for these projects. Funding would allow them to complete tasks needed to properly maintain their livestock and invest in their acreages. However, area habitat would also benefit from grass seeding and grazing management practices as grass seeding's provide nutrients and water pipelines potentially provide for a year-round clean water source.*

- Define who will be responsible for the implementation, maintenance and follow-up stages of the project Kingsbury conservation District and Landowners

*\*The conservation district will work closely and efficiently with our producers. After a conservation plan is designed the implementation and maintenance is carried out by the land owner. Before a producer receives cost share for a completed project, a site visit is conducted and documented.*

- Indicate where this project will be located (district, watershed, community, etc. Attach maps as relevant) Kingsbury County

*\*Each project will take place within the Kingsbury County limits.*

- Describe the specific environmental, natural resource, ecological, educational and/or socio-economic need(s) the projects will address.

Shelterbelts are generally established to protect or shelter nearby areas from troublesome winds. Such plantings are used to reduce wind erosion, protect growing plants (crops and forage), alter Microenvironment to enhance plant growth, manage snow, improve irrigation efficiency and delineate field boundaries. Windbreaks also protect structures and livestock, provide wildlife habitat and travel corridors, enhance aesthetics and increase carbon storage. Also, when used as a living screen, windbreaks control views, reduce noise and

intercept chemical drift. Planting grass will control erosion and noxious weeds.

***\*By providing fencing cost-share for rotational grazing we are reducing unnecessary consumption for natural resources to conserve energy, thus allowing livestock to graze only certain areas to allow the remaining areas time to replenish***

***\*Grass seeding cost-share for tame, native grass mixes, and forbs mixes benefit the environment in many ecological ways; as we are preserving land; the grass plantings require much less maintenance including fewer pesticide applications and little to none fertilizer is required for adequate growth.***

***\*As we know, all life on earth depends on water; it is a vital natural resource for all living organisms. Cost-share for water pipelines, tanks, rural water hookup, and dugout construction would continue to benefit the natural resources for plants, livestock, wildlife habitat, soil, and our pollinators.***

- Briefly describe the specific on-the-ground restoration activities to be undertaken on-site to achieve the project objectives, and why it is needed.

For plantings to function properly, access by livestock and certain wildlife must be managed year-round (use exclusion and fencing). Connecting shelterbelts with existing or planned perennial vegetation, such as woodlots and woody draws (tree/shrub establishment) or riparian areas provides additional benefits for Wildlife and aesthetics.

***\*The process of land restoration for grass seeding, pipeline, tanks, rural water hookup, dugout construction, and fencing needs would include a process of cleaning up and preserving a site.***

- Explain if this project is part of a larger regional and/or local watershed effort.

Most of the trees Kingsbury Conservation District will be replacing are 30-40 year old trees that are now dead. We will be guiding landowners on the best ways to revitalize and still use the old shelter belt by taking only the necessary rows and replacing dead trees with new trees. Trees and shrubs in a windbreak or shelterbelt need periodic maintenance and, later on, possible renovation. The Conservation District will monitor the trees growth throughout the years and send out letters to the landowners with the status of the reworked shelterbelt, and how to make improvements if necessary

- Describe provisions to ensure long-term management and protection of the project (e.g., conservation easements on private land, long-term monitoring program)

The conservation District will monitor the trees growth through the years and send out letters to the landowners on how to correct a problem if needed.

***\*As a project is completed it is in the best of interest of the landowner to continue to maintain a completed project. The landowner has invested time, money and energy into completing a project, in order for the project to flourish a certain amount of maintenance is needs for the projects longevity.***

- Please indicate if any federal, state or local permits are required to complete the project and the status of efforts to secure necessary authorization.

N/A

**\*The conservation district will work effectively with landowners to ensure they follow any federal, state or local permits that are required to complete the project and the status of efforts to secure necessary authorization.**

#### E. Final Products

- Describe the anticipated benefits of the project from an ecological, educational, and/or socio-economic perspective (e.g., number of acres of wetlands or stream miles restored, target audience and how they will benefit)

It is vitally important for Kingsbury Conservation District to continue teaching and stressing the importance of conserving our lands, our soil and our wildlife habitat to the new generation of landowners and farmers. It is our desire to encourage more landowners in revitalizing this conservation practice to revitalize our soils and to keep our soils from becoming overworked and exhausted. Our hope is to revitalize at least 10 acres of land.

#### F. Partner Justification

- Describe the strengths, qualifications and nature of the contribution of your organization and other collaborating Organizations.

Kingsbury conservation Districts cares very much how we leave our environment for future landowners and future generations. We strive to find ways to help not only farmland owners, but the land owners in our communities. We provide assistance in learning and implementing best conservation practices possible, working closely with the FSA, NRCS and GF& P to execute the best procedures for tree survival.

G. Identify how you will measure the success of the project. By how many more landowners we can get reinterested in Conservation!

Making this conservation project among other like this assessable to the younger generation. It takes our generation to teach the next, by showing that we care now will further their interest and enthusiasm for conservation.





## KINGSBURY CONSERVATION DISTRICT

120 2<sup>nd</sup> Street Southeast  
P.O. Box 85  
De Smet, South Dakota 57231  
605-854-3183  
[kingsburycd@sdconservation.net](mailto:kingsburycd@sdconservation.net)

Board of Supervisors  
Alan Vedvei – Chairman  
Erland Weerts – Vice Chairman  
Charlie Soefing – Secretary  
Rich Abrahamson- Supervisor  
Rob Lee – Supervisor

August 31<sup>st</sup>, 2022

Dear State Conservation Commissioners:

The Kingsbury Conservation District is respectfully requesting to amend the Urban Conservation grant #2022-CSW-018 in effort to assist global pollinator recovery efforts.

The District is requesting to implement a 50/50 cost-share program to help offset initial input expense for pollinator plots and pollinator gardens.

Expense requested will assist project goers with inputs cost such as soil, seed, plants, tools, rain barrels, watering and irrigation supplies, as well as contractual services costs.

We are grateful for the continued support from the Department of Natural Resources as this funding will allow smaller Kingsbury County land owners to play a larger pivotal role in our ecosystem as pollinator's worldwide continue to decline.

Sincerely,

*Jamie Forbes*  
Office Manager

Kingsbury Conservation District

**Clean. Clear. Conservation.**

Kingsbury Conservation District  
De Smet, SD

Urban Infrastructure  
FY 2022-2023 Grant Application  
**2022-CSW-018**

**SECTION D**

**Project Partners**

Please list any project partners and quantify their contribution to the project.

Project partners: Project partners include but are not limited to the following organizations:

- SD Department of Ag. would allow access to their urban forestry website and helps with creating an informative video on Ash Trees and EAB
- SD GF&P provides assistants to communities on what trees will attract butterflies, bees and song birds.
- Tree City USA Communities provides educational material and handouts.
- South Dakota Association of Master Gardeners guides our communities on better tree care and assists in landscaping to help capture water naturally from rainfall.

Any practice funded by the Coordinated Natural Resources Conservation Grant funds must meet one or more goals of the Coordinated Plan for the Natural Resources Conservation.

Goals:

An important part of the development of the coordinated plan is public outreach; we are putting together a video to help communities to identify Ash Trees and EAB. Conservation districts will have a public event teaching our communities about the STI Tool, and how to identify Ash trees and EAB and a guide on how to use the Trimming tool.

This project will enhance the health and resiliency of South Dakota's community forests by supporting tree stewardship in small and midsize cities and promoting the valuable benefits of community forests.

Trees are a valuable part of a community's infrastructure and provide benefits throughout their entire lifetime. The benefits of trees are numerous: saving energy costs, reducing storm water runoff, removing air pollution, providing health benefits, and lowering violence and crime. In fact, trees are the only component of a community's infrastructure that increases in value over time.

*By implementing cost-share assistance to help create pollinator plots and gardens we are improving and supporting pollination to help supply food in the form of pollen and nectar that will ensure animal habitat will stay in the area to keep pollinating our crops for continued row crop, fruit and vegetable production.*

**Project Descriptions and Need**

Explain who will be the primary beneficiaries of this project.

Primary Beneficiaries:

Kingsbury County serves the following towns and cities in South Dakota: Arlington, Badger, Bancroft, De Smet, Hetland, Iroquois, Lake Preston, and Oldham these communities will serve as the primary beneficiaries for this project as well as many traveling tourist that come to the area for the historic Ingalls Farmstead visits.



Define who will be responsible for the implementation, maintenance, and follow-up stages of the project.

Responsible:

*The Kingsbury Conservation District will be the direct point of contact for assisting the local communities and area landowners with the removal of dilapidated trees, prepping, planting, maintenance, care and protection of tree population.*

*Pollinator plot/garden participants will water, weed and maintain plots to which their cost share application explains.*

Indicate where this project will be located (district, watershed, community, etc.). Attach maps as relevant.

Project location:

Kingsbury County serves the following towns and cities in South Dakota: Arlington, Badger, Bancroft, De Smet, Hetland, Iroquois, Lake Preston, and Oldham.

*In addition, we are encouraged to support local smaller farm acreages / hobby farms or acreages that are not eligible for USDA programs. This project will also serve local rural areas, in addition to the local smaller farms outside of the urban area. .*

Describe the specific environmental, natural resource, ecological, educational, and/or socio-economic need(s) that the project will address.

Environmental need:

This “green infrastructure” provides many valuable benefits important to human and ecological health including:

- Reducing cooling costs by up to 50% for well shaded homes and heating costs by up to 40% with effective windbreaks.
- Sequestering 27,200 tons of carbon/year (at a value of \$13.6 million); and Removing 1,310 tons of total pollutants/year (at a value of \$9.7 million):
- Pollutants include carbon monoxide, nitrogen dioxide, ozone, sulfur dioxide, and particulate matter

South Dakota’s community forests also improve water quality; reduce noise pollution; improve human comfort, health, and psychological well-being; increase property values; and improve a community’s “sense of place.”

*Furthermore, the ecological health of planting pollinator plots/gardens provides habitat for wildlife with providing food, water, and shelter to sustain biodiversity in urban areas such as towns, cities and smaller acreages which is critical to our food sources.*

*Outdoor education is a very popular tactic for our district to utilize it’s authentic, and nature centered learning experience to be outside, working with your hands. An additional benefit for many is the mental clarity and over physical health benefits this program helps provide. Pollinator plots outside of the urban area will be used as educational plots/areas for the district to teach hands-on educational plots to provide tutorials.*

Briefly describe the specific on-the-ground restoration activities to be undertaken on-site to achieve the project objectives and why it is needed.

Restoration activities:

In effort to conserve forestry practices within the communities we are envisioning planting young vibrant and non-disease harboring trees, in turn remove five potential disease harboring trees. By developing a community forestry action plan we could potentially increase species diversity in preparation for EAB, using educational outreach would allow us to expand awareness of community forests in the communities.

*Pollinators worldwide are in decline with habitat loss, disease, and pesticides are largely to blame according to the “National Wildlife Federation.” By implementing a cost share program to area*

*gardeners/farmers we hope to play a pivotal role in our ecosystem by restoring natural pollinator sources and improving conditions with pollinator gardens such as native grasses and plants, perennial plants, vegetable and fruit gardens, fruit trees, edible flowering shrubs, rain gardens, butterfly gardens, etc. Approved applications for pollinator plots, educational supplies, and travel expenses will be reimbursed "50%" of the total project costs.*

Explain if this project is part of a larger regional and/or local watershed effort.

N/A

Describe provisions to ensure long-term management and protection of the project (e.g., conservation easements on private land, long-term monitoring program).

Long-term management:

Each community involved will be required to develop a committee emphasized around "city tree" these members will be in charge of the removal of dilapidated trees, planting, maintenance, care and protection of tree populations assisting them with these needs is the Kingsbury Conservation District.

*Pollinator plantings will be located on residing land owners properties. These plantings are typically low-maintenance and require very little management after watering is concerned, however managing the habitat area for pollinators would coincide with USDA / NRCS management practices: practices such as mowing, grazing, fire control and very minimal pesticide use.*

Please indicate if any federal, state, or local permits are required to complete the project and the status of efforts to secure necessary authorization.

Permits:

Each community must abide by the tree ordinances set by the county and city government officials.

### **Final Products**

Describe the anticipated benefits of the project from an ecological, educational, and/or socio-economic perspective (e.g., number of acres of wetlands or stream miles restored, target audience and how they will benefit).

Anticipated benefits:

Trees are a valuable part of a community's infrastructure and provide benefits throughout their lifetime, including saving energy costs, reducing storm water runoff, removing air pollution, providing health benefits, and lowering violence and crime. In fact, trees are the only component of a community's infrastructure that increases in value over time.

*The benefits from planting pollinator gardens widely affect our entire agricultural landscape by helping crop producer's increase and improve the quality of their crops yields and overall plant health.*

*There is a lot of science behind a growing plant. From an educational perspective you can visibly watch a seed grow after planting it into the soil with proper maintenance then reap the benefits at harvest time all along the plant is additionally providing ecological benefit to its surrounding environment.*

Identify how you will measure the success of the project.

Measure of success:

To the conservation district success is measured by how much we can help each community grow in healthy tree numbers in effort to maintain conservation. Our vision is to continue to help communities establish a diversity of tree coverage through the process of planting, maintenance, care and protection of tree populations.

*Success in a pollinator plot/garden will be measured with visual appearance; searching for healthy attractive thriving plants, diversity of plant species, acknowledging the presence of earthworms, detecting water infiltration (no standing water), recognizing foliage color and growth.*

### **Partner Justification**

Describe the strengths, qualifications, and nature of the contribution of your organization and other collaborating organizations.

#### Area contributions:

Conservation districts offer their personal time and effort by bringing their knowledge and talents to each community with their individual requests. By providing assistance with prepping, planting, maintaining districts are suited to bring uniqueness to each community. Through networking and utilizing educational resources our district is qualified to maintain conservation on various needs with urban forestry. In addition, our connections with tree nurseries provide communities with education material such as tree care and maintenance questions. Another partner is the Department of Agriculture who provides educational plots sites for people to visit. The GF&P can guide people on what's best to plant to attract birds, bees and wildlife, each affiliation bringing years of experience and knowledge to our surrounding communities.



DATE	GRANT FUND DEPOSITS	PESTICIDE DEPOSITS	OTHER DEPOSITS	INTEREST	GRANTS AWARDED	DIVISION FUNDING	REVERTED FUNDS	DEOBLIGATED FUNDS	OTHER DEDUCTIONS	ACCOUNT BALANCE
FY 2023										
07/01/2022	\$ 500,000.00									\$ - \$ 500,000.00
										Balance forward
<b>SUBTOTAL</b>	<b>\$ 500,000.00</b>	<b>\$ 0.00</b>	<b>\$ 0.00</b>	<b>\$ 0.00</b>	<b>\$ 0.00</b>	<b>\$ 0.00</b>	<b>\$ 0.00</b>	<b>\$ 0.00</b>	<b>\$ 0.00</b>	<b>500,000.00</b>

**CUMMULATIVE TOTALS** \$ 19,215,428.83 \$ 1,011,263.98 \$ 801,298.27 \$ 1,969,945.90 \$ 23,927,023.22 \$ 1,991,196.79 \$ 24,234.07 \$ 5,086,048.96 \$ 1,690,000.00

Total revenues F \$ 500,000.00  
 Total revenues to date \$ 22,997,936.98

Reversions \$ 106,018.84  
 TOTAL Funds Available: **606,018.84**

Tentative Fall FY2023 reversions			
District	Grant #	Amount	Grant End date
Mellette	2021-CSW-018	\$ -	12/31/2022
McPherson	2020-CSW-021	\$ 1,549.45	12/31/2022
Perkins	2021-CSW-020	\$ -	12/31/2022
Miner	2019-CSW-047	\$ 8,519.92	06/30/2022
Mellette	2021-CSW-017	\$ 2,124.25	06/30/2022
Day	2020-CSW-011	\$ 16,221.41	06/30/2022
Stanley	2020-CSW-039	\$ 1,760.18	06/30/2022
Grant	2021-CSW-027	\$ 1,020.56	06/30/2022
Butte	2021-CSW-003	\$ 3,700.40	06/30/2022
Edmunds	2019-CSW-042	\$ 11,095.15	06/30/2022
Spink	2019-CSW-052		06/30/2022
Jones	2020-CSW-018	\$ 12,891.43	06/30/2022
Kingsbury	2020-CSW-034		06/30/2022
Brule-Buffalo	2021-CSW-002		06/30/2022
Hamlin	2021-CSW-011	\$ 149.85	06/30/2022
Kingsbury	2021-CSW-014	\$ -	06/30/2022
Kingsbury	2021-CSW-015	\$ -	06/30/2022
Todd	2021-CSW-021	\$ 13,986.24	06/30/2022
Fall River	2021-CSW-026	\$ 13,000.00	06/30/2022
Jones	2021-CSW-030	\$ 20,000.00	06/30/2022
Total		<b>\$106,018.84</b>	

These amounts are subject to change until all completed projects are closed out and final reimbursements are completed.





CLEAN. CLEAR. CONSERVATION.

1837 5TH AVENUE  
BELLE FOURCHE, SD 57717  
605-892-3368 EXT. 3 PH.  
855-254-6028 FX.

Bill Smith  
DANR  
Resource Conservation & Forestry Div.  
523 E. Capitol Avenue  
Pierre, SD 57501

Bill:

This letter is to serve as a final report for our Coordinated Soil and Water Conservation Grant, Open Irrigation Ditch to Buried Pipe project, #2021-CSW-003. We matched \$21,299.60 of grant funds with \$55,192.32 in other funds for a total of \$76,491.92 invested. Although \$3700.40 will be reverted due to a late cancellation caused by material availability issues, the remaining was directly applied to the conversion of open ditch to buried pipe.

A total of 11 projects were completed with these funds. The project converted 4850 feet of open ditch to buried pipe, increasing water efficiency, reducing field erosion, and limiting the amount of total suspended solids entering the Belle Fourche River. In the past there has been limited funding for these types of projects as most conversions were from flood irrigation to center pivot, this was a great opportunity for other producers.

We consider this project successfully completed. Thank you for your continued support of our conservation efforts and we look forward to working with you on our next grant.

Sincerely,

A handwritten signature in blue ink that reads "Yvette Kirkman".

Yvette Kirkman, District Manager  
Butte Conservation District

**Final Activities Report for  
Division of Resource Conservation and Forestry  
Grant #2020-CSW-011  
Grant Period: July 1, 2020, to June 30, 2022**

**Northeast Glacial Lakes Watershed Improvement and Protection Project  
Day Conservation District**

Commission Grant #2020-CSW-0114 was to end on June 30, 2021, but due to Covid the Day Conservation District requested and received a grant extension to June 30, 2022. Unfortunately, due to the pandemic and USDA offices closed to the public until early spring 2022 we had little contact with producers. Final grant budget is given on page 6.

**Information and Education Events (Project Personnel Presentations):**



**2021 Sica Hollow Fall Festival, NEGL project provided information on and specimens of aquatic invertebrates.**

Descriptions of some these programs can be found at:

<http://www.neglwatersheds.org/educationalprograms.html>

- EcoEd Day - Fort Sisseton State Park  
September 2, 2020 (33 students from one school)
- Northeast Land and Range Judging Contest – Webster, SD  
September 30, 2020 (155 students from 12 schools)



- Sica Hollow Fall Festival – Sica Hollow State Park  
October 3, 2020 (open house no count)
- Earth Day Celebration – Fort Sisseton State Park  
April 24, 2021 (open house no count)
- Master Naturalist Aquatic Ecology Program (Zoom)  
May 11, 2021
- Master Naturalist Workshop – Enemy Swim Lake  
May 7-9, 2021 (8 participants)
- Fishing Camp – Enemy Swim Lake  
July 6-8, 2021 (5 participants)
- Fishing Camp II – Enemy Swim Lake  
July 12-15, 2021 (15 participants)
- EcoEd Day – Fort Sisseton State Park  
September 8, 2021 (62 students from two schools)
- Northeast Land and Range Judging Contest – Webster, SD  
September 29, 2021 (250 students from 19 schools)
- Sica Hollow Fall Festival – Sica Hollow State Park  
October 2, 2021 (open house no count)
- Earth Day Celebration – Fort Sisseton State Park  
April 23, 2022 (open house no count)
- Bramble Park Zoo Days – Watertown, SD  
April 26; May 9, 10, 13, 16, 17, 2022 (615 2<sup>nd</sup> and 6<sup>th</sup> grade students from six Watertown Schools)
- Webster High School Career Fair – Webster, SD  
May 4, 2022
- Lake and Stream Ecology Workshop – Enemy Swim Lake  
June 1-3, 2022 (17 participants)
- Fishing Camp – Enemy Swim Lake  
June 13-16, 2022 (28 participants)

A total of 1,188 persons attended the programs and presentations by NEGL personnel listed above during the grant period. Programs were presented to a variety of age groups from 2<sup>nd</sup> through 6th grade students (Bramble Park Zoo), 7th and 8th grade students (EcoEd Day), high school and college age students and adults (Lake and Stream Ecology and Water Quality Workshops and Northeast Range and Land Judging Contest). Lake and Stream Ecology and Water Quality Workshop college graduate and undergraduate students could earn 1 college credit hour for completing the workshop, elementary and secondary teaches can earn 1 college credit hour or 2 Continuing Education Credits (CEUs) for completing the workshop. Due to the Covid-19 pandemic a majority of information and education activities planned for the years 2020 and 2021 were cancelled included the Big Sioux and Northern Prairie Water Festivals.

### **Misc. Information and Education Activities**

- Project Website: [www.neglwatersheds.org](http://www.neglwatersheds.org)  
(water quality reports, cost share information, fact sheets, information and education programs, project photos etc.)

### **Meetings with Project Partners and Sponsors**

- Day Conservation District Board of Directors  
8 meetings
- Roberts Conservation District Board of Directors  
1 meeting
- Enemy Swim Sanitary Sewer District Board of Directors  
2 annual meetings (2020, 2021)
- Pickerel Lake Conservancy Board of Directors  
5 meetings  
2 annual membership meetings (2020, 2021)
- East Dakota Water Development District  
1 meeting
- Sisseton Wahpeton Oyate  
2 meetings

***Total Meetings with Project Partners: 21***

## **Water Quality Monitoring**

- Provided personnel to help East Dakota Water Development District with the Rotating Lake Basin project collecting water quality samples and data for Lake Traverse; Big Stone, Bitter, Enemy Swim, Pickerel, and Waubay Lakes summer of 2020 and 2021.



Collecting aquatic invertebrates from Monighan Creek.

- **Aquatic Insect Survey**  
Sixteen stream sites and eight lakes were surveyed for five families of aquatic insects between July 7, 2020, and October 19, 2021.
- Collaborated with RMB Laboratories to publish a study of Enemy Swim Lakes water quality based on seventeen years of data collected by watershed projects sponsored by the Day County Conservation District. [http://neglwatersheds.org/images/EnemySwim\\_2020.4.pdf](http://neglwatersheds.org/images/EnemySwim_2020.4.pdf)

## **Conservation Planning and Best Management Practices Implemented and Planned (July 1, 2020 to June 30, 2022)**

- **Conservation Reserve Program and 319 Riparian Area Mgt. (RAM) Program**  
Riparian Area Mgt. Acres Implemented – 77.8 acres (9 contracts)  
Continuous Conservation Reserve Acres Implemented – 67.3 acres (5 contracts).
- **Shoreline/Streambank Restoration**  
Stream Crossings constructed – 10 (5 contracts)
- **Grazing Management (water development and cross fencing)**  
Acres implemented – 366 acres (3 contracts)

- Critical Area Planting/Forage and Biomass  
158 acres planted (5 contracts)
- Grassed Waterways  
3,646 lineal feet constructed (3 contracts)



Completed stream crossing Marshall County.

- Pickerel Lake Shoreline Buffer  
1,500 lineal feet of shoreline planted to native forbs and grasses



Completed shoreline restoration and native plant buffer, Pickerel Lake (joint project with NEGL, SD Game, Fish, and Parks, and Pickerel Lake Conservancy.

<b>Northeast Glacial Lakes Watershed Expenditures - July 1, 2020 to June 30, 2022</b>						
Activity Budget	Conservation	Other Funds			Local Partners	Producer Match
	Commission	EPA 319	SD SRF	SD GFP		
Wages & Benefits Coordinator	\$ -	\$ 93,719.83	\$ 28,672.99	\$ -	\$ -	\$ -
Wages & Benefits Technicians	\$ -	\$ 13,139.41	\$ 946.66	\$ -	\$ -	\$ -
Supplies and Travels	\$ -	\$ 2,211.93	\$ 265.65	\$ -	\$ -	\$ -
Water Testing	\$ -	\$ -	\$ -	\$ -	\$ 1,728.00	\$ -
Invert Survey	\$ -	\$ -	\$ -	\$ 9,286.00	\$ 11,500.00	\$ -
Riparian Buffers	\$ -	\$ 27,466.00	\$ 9,613.00	\$ -	\$ -	\$ 20,088.51
Stream Crossings	\$ -	\$ 30,621.00	\$ 4,785.00	\$ -	\$ -	\$ 23,138.13
Forage and Biomass Planting	\$ 4,188.59	\$ 2,652.71	\$ -	\$ -	\$ -	\$ 4,690.80
Grassed Waterways	\$ -	\$ 14,290.00	\$ -	\$ -	\$ -	\$ 18,529.80
Grazing Improvements	\$ -	\$ 11,540.60	\$ -	\$ -	\$ -	\$ 15,077.93
Subtotals:	\$ 4,188.59	\$ 195,641.48	\$ 44,283.30	\$ 9,286.00	\$ 13,228.00	\$ 81,525.17
Total Commission Grant:	<b>\$ 4,188.59</b>	Total Federal Funds:		\$ 195,641.48		
		Total State Funds:		\$ 57,757.89		
		Total Local Funds:		\$ 94,753.17		
		Project Total:		\$ 348,152.54		



Edmunds County Conservation District  
PO Box 25  
Ipswich, SD 57451-0025

*Dear Commissioners,*

*Edmunds County is closing the tree grant at this time. We have had trouble getting landowners to elect to take part in this for now. We have had more ask about renovating of older tree belts. Our hope is to be able to try and write a grant and or find ways to help landowners with their needs or renovating.*

*Back when we asked for this grant we had excitement but this soon changed due to many variables. Thank you for giving Edmunds the opportunity with this grant and we hope to have more grant proposals to present to the commissioners.*

A handwritten signature in black ink that reads "Meshele Townsend".

*Meshele Townsend*  
*District Manager*  
Edmunds County Conservation District  
PO Box 25  
Ipswich SD 57451  
(909) 241-6537 cell

## 2021 MC Tree Grant Final Report

The 2021 Mellette County Tree Grant was successful. We assisted landowners and producers with planting of 178.1 Rod Rows of Shrubs, 1776.1 Rod rows of trees and 32366 feet of fabric. We had one project in 2021 that assisted with the lower cost share rate of CCRP trees. Four projects this year have the potential to benefit the Lewis and Clark watershed improvement. With the dry conditions this spring some plantings were canceled and we will be reverting a small portion of the grant funds received. With the continued dry conditions, it may have been a good decision to postpone tree planting. The plantings that were completed received some timely rains and are doing good. Almost ninety percent of the Grant funds were used as intended and they would have all been used had it not been for the dry conditions and cancelations.





## KINGSBURY CONSERVATION DISTRICT

120 2<sup>nd</sup> Street Southeast  
P.O. Box 85  
De Smet, South Dakota 57231  
605-854-3183  
Fax: 605-854-3471

Board of Supervisors  
Alan Vedvei – Chairman  
Erland Weerts – Vice Chairman  
Charlie Soeffing – Secretary  
Rich Abrahamson – Supervisor  
Rob Lee – Supervisor

FINAL REPORT  
*Conservation Education*  
2021-CSW-014  
January 1<sup>st</sup>, 2021 – June 30<sup>th</sup>, 2022

The Kingsbury County Conservation District along with the Hamlin Conservation District shared grant funds in the amount of \$9,000.00 from the Department of Agriculture to assist each district with funding to help educate, promote and advocate for conservation within our counties.

The program began January 1<sup>st</sup>, 2021 and ran through June 30<sup>th</sup>, 2022. The funds were used to provide educational supplies, wages & benefits, administration funds and travel expenses to each district.

Each district hosted educational events throughout the year for our area communities. Events included hands-on learning demonstrations by Dr. John Ball during the tree care/ pruning workshops. Over 200 trees were gifted to area students in observance of Arbor Day. District employees hosted legislative round table discussion that encouraged influential community members to bring forth their area conservation concerns.

The funds were distributed to more than 25 area business with in each county as the grant dollars were Used to purchase educational supplies; items purchased included office supplies, promotional items, etc. Wages and benefits were expensed were accrued by staff members organizing and hosting events. Administration expenses were accrued while employees managed overall program expenses. Travel expenses were accrued for staff and supervisors to attend educational events.

The Conservation Board of Directors is grateful for the opportunity to invest in our communities with the assistance from the Department of Agriculture. The cost-share dollars are vital to this county in effort to continue to conserve our communities with clean, clear, conservation.

Thank you for your continued conservation support in Kingsbury County and Hamlin County!

Sincerely,

*Jamie D. Forbes*

Jamie Forbes  
Kingsbury Conservation District  
Office Manager



**Clean. Clear. Conservation.**



## KINGSBURY CONSERVATION DISTRICT

120 2<sup>nd</sup> Street Southeast  
P.O. Box 85  
De Smet, South Dakota 57231  
605-854-3183  
Fax: 605-854-3471

<p><u>Board of Supervisors</u> Alan Vedvei – Chairman Erland Weerts – Vice Chairman Charlie Soeffing – Secretary Rich Abrahamson – Supervisor Rob Lee – Supervisor</p>
--

FINAL REPORT  
*Conservation Practice Grant*  
2021-CSW-015  
January 1<sup>st</sup>, 2021 – June 30<sup>th</sup>, 2022

The Kingsbury County Conservation District received grant funds in the amount of \$26,000.00 from the Department of Agriculture to assist area Kingsbury County land owners. The program began January 1<sup>st</sup>, 2021 and ran through June 30<sup>th</sup>, 2022. The funds were used to assist area producers with establishing and renovating dilapidated shelter –belts; along with planting windbreaks for habitat, crop protection, soil erosion, and riparian buffers. Additional funding assisted the district with administration dollars to help offset accrued expenses while implementing this grant and assisting producers with their individual needs within Kingsbury County.

The funds were distributed to more than 20 area land owners with more than 100 acres of shrubs and trees planted while utilizing cost share grant dollars. In addition, more than 100 acres were planted into cover crops and native grasses to assist with soil erosion and improving the quality of our soil.

The Kingsbury Conservation Board of Directors is grateful for the opportunity to invest in our area farmer's and their legacy. The cost-share dollars are vital to this county in effort to continue to conserve our lands with clean, clear, conservation.

Thank you for your continued conservation support in Kingsbury County!

Sincerely,

*Jamie D. Forbes*

Jamie Forbes  
Office Manager

**Clean. Clear. Conservation.**



Grant County Conservation  
1102 S. Dakota St.  
Milbank, SD 57252  
(605)-432-6570 EXT # 1  
[grantcd@sdconservation.net](mailto:grantcd@sdconservation.net)

SD Dept of Ag  
Alex Roeber,

Grant Conservation District utilized the 2021 CSW-023 Grant for Education & Awareness for the promotion of natural resource conservation, as well as promotional materials within Grant County, SD.

Accomplishments include purchases for our year event with the community was the Farming Home Show it helps pay for the booth at the event, promotional item to be handed out like pens, notepads, stress tree and candy. Also help fund the flyer that was made for our tree says and other service we provide for our producer. Another event it helps was with Pheasant Forever Workshop that provides with some item that we could share with our producers at that event as well. Envelopes were purchased as well as mailers to showcase and promote our tree and shrub varieties. Also, I was able to purchase some shirt with our logo on to be worn to these event and other event around our area to promote our service

Signs that were made to hang outside of our building so people know who we are and what that shed is there for, help a lot of producers to find it to pick up their tree and seed we provide for them. Also purchase a banner that we will put out to help get word out on service we provide. Also made sign to give to the producer on displaying them out in field once we provide service to them and other know we are here for them.

Finally, we utilized this grant for the purchase of supplies, décor, and other supplies to help us get more advertisement out there with our local papers and local business. Feel like it a great way to communicate with our producer and better way to get service out.

Overall, our goal was completed. We were able to promote and educate within our county's boundaries. With the new promotional material purchased, we will have years of additional opportunities to showcase our company, promote conservation, and continue to keep our name on the public's mind.

Thank you,

Amy Sis



Hamlin County Conservation District  
PO Box 165  
Hayti, SD 57241  
Phone (605)783-3642 x4

---

June 16, 2022

SD Department of Agriculture and Natural Resources  
Division of Resource Conservation & Forestry  
Attn: Alex Roeber  
523 E. Capitol Ave  
Pierre, SD 57501

Final Report Grant #2021-CSW-011

Dear Alex Roeber:

With the Hamlin Conservation Tree Plantings Grant, our District was able to add 10.4 acres of new trees to our county. These new plantings consisted of four Field Windbreaks, a Renovation and two Wildlife Habitat plantings.

A total of 2,655 trees were planted with fabric totaling 18,216 linear feet.

Our county was able to assist nine producers on ten projects totaling \$24,572. The producers paid at least 60% of the total cost.

Without the funding of the Conservation Commission Grants, these plantings would not have been possible. Our counties benefit for many years to come from the planting of these new tree belts. We will see benefits from the reduced soil erosion, improved air and water quality, increase wildlife habitat and county aesthetics. Thank you for continuing to provide this resource.

I have attached pictures of one of the cost share sites.

If you have any questions, please do not hesitate to contact our office.

Thank you,

*Peggy Loomis*, District Manager  
Hamlin County Conservation District  
Box 165  
Hayti, SD 57241  
(605)783-3642 x4  
[hamlincd@sdconservation.net](mailto:hamlincd@sdconservation.net)



One site planted through the grant cost share. This is a wildlife planting. Planted in two sections; one on each side of a water source. This will look great when the trees are filling in!! June 2022



**MINER CONSERVATION DISTRICT**

**601 West Farmer Avenue, Suite A**

**Howard, South Dakota 57349**

**Phone: (605) 772-5642 (ext 3)**

[tami.moore@sd.nacdnet.net](mailto:tami.moore@sd.nacdnet.net)

Board of Supervisors

*Dale Shumaker*

*Marvin Kizer*

*Tim Clarke*

*Julie Calmus*

*Cathleen Connor*

[www.sdconservation.org/minercd](http://www.sdconservation.org/minercd)

ARBOR DAY CELEBRATIONS WITH 3<sup>RD</sup>, 5<sup>TH</sup>, and 6<sup>TH</sup> GRADE STUDENTS

The Miner Conservation District met with the 5<sup>th</sup> graders on May 4<sup>th</sup>. We talked about Arbor Day and Correct Tree Planting Techniques. We walked to the Golf Course with our 7' Pacific Sunset Maple. The Golf Course had already found the spot for us to plant, dug the hole, and added water to the hole. The students then planted their Class Tree and installed a tree protector and mat to protect the tree from weeds and mowers. And added mulch when completed. We walked back to class and each student was presented a Black Hills Spruce (state tree of South Dakota). The BH Spruce was a styro potted and it was placed in bags that had instructions and the type of tree.

The Miner Conservation District met with the 6<sup>th</sup> graders on May 5<sup>th</sup>. We talked about Arbor Day and Correct Tree Planting Techniques. We walked to the Golf Course with our 7' Prairie Reflection Laurel Willow. The Golf Course had already found the spot for us to plant near the creek, dug the hole, and added water to the hole. The students then planted their Class Tree and installed a tree protector and mat to protect the tree from weeds and mowers. And added mulch when completed. We walked back to class and each student was presented a Black Hills Spruce (state tree of South Dakota). The BH Spruce was a styro potted and it was placed in bags that had instructions and the type of tree.

The Miner Conservation District met with the 3<sup>rd</sup> graders on May 19<sup>th</sup>. We talked about Arbor Day and how important trees are to our community. We talked about correct Tree Planting, and the students discussed their experiences with trees. Each student was presented a Black Hills Spruce tree. We purchased bags that had instructions for trees years ago to give out when we gave trees out for Arbor Day, they work great and the little trees are protected until the students get home from school. We have enclosed a message from a Grandmother of one of these 3<sup>rd</sup> graders that decided to take his tree to her place and plant it with her (since the wind had taken down her favorite tree). Also enclosed are 2 pictures of Eli and his Grandma planting their tree. He was so proud of his tree that he planted with Grandma that he talked his Mom and Dad into planting more trees in their yard.



McPherson County Conservation District  
PO Box 60  
Leola, SD 57456

August 29, 2022

## McPherson County Conservation District

### Final Report

#### Grant#2020-CSW-021

The McPherson County Conservation District was awarded a \$20,000.00 Grant to aid producers with Farmstead Windbreaks, Wildlife Plantings and Field Windbreaks. Along with a community garden.

We worked with 10 Producers; only 5 continued with their projects. Some because of Covid-19 ,others due to affordability. 5 producers used the Grant for Shrubs/ installed- 12,742.12', Tree/installed-18,439.08, Fabric/installed- 28,456.52' and Tubes/installed-587.

The garden has produced 350 pounds of potatoes, peppers, onions,and numerous pumpkins. The produce has been donated to our local food panty's. With Covid and now the economy we have decided to expand our garden next year.

The McPherson County Conservation District would like to thank the State Conservation Commission for the funding. It is because of this funding that we are able to assist 5 producers in their conservation efforts and help our local food pantries in their efforts to help those in need.

Thank You

A handwritten signature in black ink that reads "Karen Yost". The signature is written in a cursive style and is positioned above a horizontal line.

Karen Yost

District Manager

McPherson County Conservation District  
 MCCD Tree Project  
 2020-CSW-021 2021 plantings

Producer	County	Quantity	unit/measure	Practice	Rate	Cost	Commission Grant
Dutenhoffer	McPherson	90	RR	Shrub/plant	5.5	495	247.5
		90	RR	tree/plant	5	450	225
		2,940	ft	fabric	0.61	17,934	896.7
		53	each	tubes/install	6.5	344.5	172.25
		200	RR	Shrub/plant	5.5	1100	550
		333	RR	tree/plant	5	1,665.00	832.5
		8,800	ft	fabric	0.61	5,368.00	2,684.00
		237	each	tubes/install	6.5	1,540.50	770.25
							6,378.20
Hoff	McPherson	135	RR	Shrub/plant	5.5	742.50	371.25
		225	RR	tree/plant	5	1,125.00	562.5
		5,960	ft	fabric	0.61	3,635.60	1,817.80
		106	each	tubes/install	6.5	689	344.5
		123	RR	shrub/install	5.5	676.50	338.25
		205	RR	tree/plant	5	1,025	512.5
		5,400	ft	fabric	0.61	3,294.00	1,647.00
		97	each	tubes/install	6.5	630.5	315.25
							5,909.05
Kallas	McPherson	96	RR	shrub/install	5.5	528	264
		96	RR	tree/install	5	480	240
		3,200	ft	fabric/install	0.61	1,952	976
		20	each	tubes/install	6.5	130	65
							1,545.00
<b>2022 Plantings</b>							
Wiesenberger	McPherson	31.31	RR	shrub/plant	5.5	172.21	86.1
		32.3	RR	tree/plant	5	161.5	80.75
		31.87	RR	shrub/plant	5.5	159.35	79.68



tree/plant	5	176	88
fabric/install	0.61	1,288.32	644.16
			978.69

shrub/plant	5.5	171.99	85.99
tree/plant	5	156.5	78.25
tree/plant	5	155	77.5
tree/plant	5	156.35	78
tree/plant	5	155	77.5
tree/plant	5	156.5	78.25
tree/plant	5	169.05	84.53
shrub/plant	5.5	169	92.95
tree/plant	5	72.7	36.35
fabric/install	0.61	2,715.72	1,357.86
tubes/install	6.5	481	240.5

Total			2,287.85
Shrubs/install-772.25 RR or 12,742.12'		Total	17,098.79
Tree/install- 1,117.52 RR or 18,439.08'		Garden	351.81
Fabric/install- 28,456.52'		Admin	1,000.00
Tubes/install- 587		Total	18,450.60
		Grant	20,000.00
			1,549.40

## 2021 MultiPractice Grant 2021-CSW-018 Final Report

The 2021 Multi practice Grant was very successful. It helped producer to improve grazing distribution on over 16,000 acres. It provided assistance for repair of two dams that totaled over seven surface acres. Over 29000 feet of pipeline was installed with assistance from this grant. There were 7 watering facilities four portable, 2 permanent tire tanks and one winter automatic waterer. The grant assisted with the installation of 48221 feet of temporary and permanent fence. The grant assisted two producers with 3 wells. It also provided assistance for three solar pumping plants. It assisted with a 120 acre tame grass seeding that will stay in perineal cover for several years. All grant funds and over half of administration funds were used to assist with these projects. We did extend the grant by 6 months to ensure all projects were completed but they all were completed within the original time line for the grant. The Mellette and Todd County Conservation District appreciate the opportunity to provide assistance to producers in the area.



**Grant 2019-CSW-047**  
**MINER CONSERVATION DISTRICT**  
**POLLINATOR / RAIN GARDEN GRANT PROJECT**  
**FINAL REPORT**  
**July 1, 2019 through June 30, 2022**

The Miner Conservation District's 'Pollinator / Rain Garden Grant Project' – Grant #20196-CSW-047 – is now complete. The term of the grant was July 1, 2019 through June 30, 2022.

We had very high hopes of accomplishing many pollinator plantings and rain gardens in Miner, Kingsbury, Aurora, Hanson, Clay, Union, McCook, and Minnehaha Conservation Districts. The only Conservation Districts that participated were Miner, Kingsbury, and Aurora. We had originally split the funds equally between all the districts. We regret doing so, but we will be reverting the funds that were assigned to the non-participating Conservation Districts. There were a couple of the reasons this grant was less than successful in the other counties. Covid hit in the middle of the grant, so many of the employees were working from home or in their tree shed. The Big Sioux Nursery underwent new management, and many of the perennials were no longer available for the plantings. 4 of the counties had at least 1 employee change during the period. This was such an awesome grant opportunity, and we are very sorry we were less than successful with this grant.

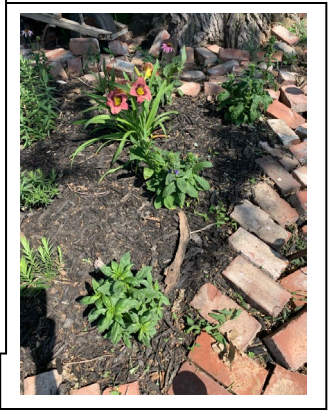
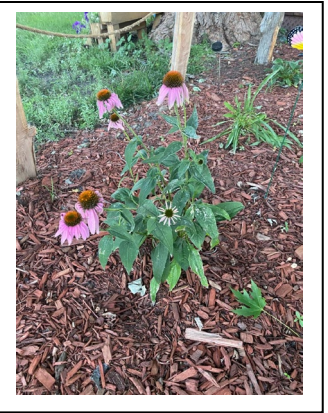
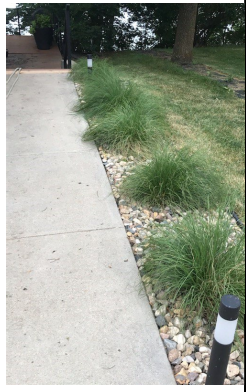
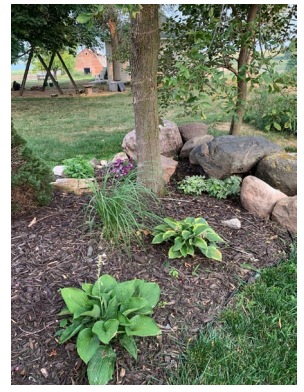
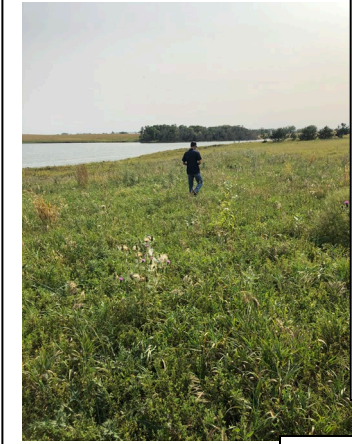
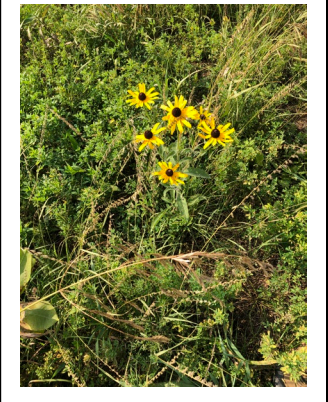
The projects we did accomplish were awesome. We had a Growing Youth project that provided conservation education and help with gardens and flowers at the local nursing home. Pollinator plants were planted and labeled. Throughout the 3 counties of Miner, Kingsbury, and Aurora - 9 Pollinator Gardens were planted that consisted of New Jersey Tea, Daylilies, Phlox, Asters, Black Eyed Susan, Cardinal Flowers, Coneflowers, Lobelia, Roses, Goldsturn, Penstemmon, Dahlia, Gladiolus, Violets, Mums, Daisies, Nasturtium, Cosmos, Sedum, Delphinium, Pasque Flowers, Hostas, Rhubarb, Hyssop, Crabapples, Apple & Peach trees, and Milkweed. 2 Pollinator Seeding with similar native flowers and forbs – but these were seeded with a grass drill. 2 Rain Gardens were planted that consisted of Bad River Grama, Indiangrass, Prairie Dropseed, Feather Reed Grass, and Sweet Grass.

In our own little way, we have helped with pollinator habitat. Pollinators are nearly as important as sunlight, soil, and water to the reproductive success of over 75% of the world's flowering plants. They are crucial to the production of most fruits, nuts, and berries on which people and wildlife depend. Over 150 food crops in the US depend on pollinators including Apples, Squash, Tomatoes, Almonds, Cherries, Strawberries, Elderberry, and Raspberries to name just a few.

Through the community project we felt we reached about 60 children along with the nursing home citizens. Impossible to know how many wonderful pollinators we have provided habitat and pollen.

Thank you for giving us the opportunity to try this grant project. It was a new project that we had never tried, so there were many lessons to learn. We are all better stewards of our land because of this project. THANK YOU!

See some of the pictures of the projects on the next page.



## **NORTHWEST AREA NATURAL RESOURCE SPECIALIST 2021-CSW-020 FINAL REPORT**

This is the final report for the South Dakota Conservation Commission grant 2021-CSW-020. The grant has enabled the Northwest Area Conservation Districts with providing their producers with the expertise and ability to plant shelterbelts. These shelterbelts provide protection for livestock, prevent erosion of fields, and most have the added benefit of providing food and shelter for wildlife.

### **2021-CSW-020 Tree Planting Grant**

- In 2021 assisted 9 producers plan shelterbelts on their land with approximately 2258.5 rod rows of trees, 465.8 rod rows of shrubs, and 44,937 feet of fabric
- In 2022 assisted 2 producers plan shelterbelts on their land with approximately 919.7 rod rows of trees, 122.4 rod rows of shrubs, and 17, 194.50 feet of fabric

This grant has provided the Northwest Area producers with the ability to plant shelterbelts to protect livestock and against erosion and hopefully can continue with it in the future.

We would like to thank the Conservation Commission and the Division for supporting the Northwest Area with the Tree Planting Grant.

"In accordance with Federal law and U.S. Department of Agriculture policy, this institution is prohibited from discriminating on the basis of race, color, national origin, age, disability, religion, sex, and familial status. ((Not all prohibited bases apply to all programs.)) To file a complaint of discrimination, write USDA, Director, Office of Civil Rights, 1400 Independence Avenue, S.W., Washington, D.C. 20250-9410 or call (800) 795-3272 (voice) or (202) 720-6382 (TDD)."

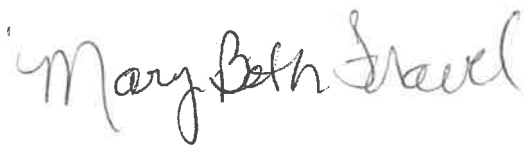
To State Conservation Commission

The Stanley County Conservation District was awarded a grant in 2020 for \$9314 and with these funds we helped 3 producers plants trees for wildlife and livestock shelterbelts totaling 16,160 feet. In 2021 we cost shared \$4530 and in 2022 the amount will be \$3023.70

We are requesting the final amount to close the grant on June 30 and since we weren't able to use all the money, the remaining funds can be put back in your bank for future projects.

Thank you for the help and we may apply for more funds in the future.

Sincerely,

A handwritten signature in cursive script that reads "MaryBeth Fravel". The signature is written in dark ink and is positioned above the printed name.

MaryBeth Fravel

Stanley County Conservation

## Final Report

Todd County Conservation District

Conservation Grant 2021-CSW-021 Cover Crop Grant

We assisted one producer with this grant to plant 72 acres of cover crops. The other producers that had applied either decided not to plant, planted on their own, or were funded through the NRCS soil health EQIP project. This year and last year were very dry in our area. Hopefully we will have more interest in the future.





<u>Applic #</u>	<u>District</u>	<u>Project Title</u>	<u>Project Start</u>	<u>Project End</u>	<u>Approved Amt</u>	<u>Total Project</u>	<u>Payment Amount</u>	<u>Total Match</u>	<u>Leverage</u>	<u>Reverted \$</u>
201926	MELLETTTE	2019 MULTI-PRACTICE	01/01/2019	06/30/2020	\$39,000.00	\$114,000.00	\$39,000.00	\$142,524.49	\$3.65	\$0.00
201927	MELLETTTE	2019 MC TREES	01/01/2019	06/30/2020	\$15,000.00	\$30,000.00	\$15,000.00	\$15,616.80	\$1.04	\$0.00
201928	MINER	SOIL HEALTH IMPROVEMENT	01/01/2019	06/30/2020	\$15,000.00	\$31,636.00	\$15,000.00	\$26,416.81	\$1.76	\$0.00
201929	MINER	CONSERVATION AWARENESS	01/01/2019	12/31/2019	\$1,400.00	\$3,050.00	\$1,400.00	\$5,286.72	\$3.78	\$0.00
201930	PERKINS	NW AREA TREE PLANTING	01/01/2019	12/31/2020	\$36,000.00	\$91,885.64	\$35,791.26	\$47,056.93	\$1.31	\$208.74
201931	PERKINS	NW AREA NAT. RESOURCE SPEC	01/01/2019	12/31/2019	\$15,000.00	\$56,100.00	\$15,000.00	\$23,710.96	\$1.58	\$0.00
201932	SANBORN	SHELTERBELTS	01/01/2019	12/31/2019	\$8,673.00	\$16,346.00	\$4,791.57	\$4,452.07	\$0.93	\$3,881.43
201933	TODD	TREE PLANTING	01/01/2019	06/30/2020	\$12,500.00	\$25,000.00	\$12,500.00	\$13,099.83	\$1.05	\$0.00
201934	Beadle	Baum Demonstration Farm	07/01/2019	06/30/2021	\$13,500.00	\$30,180.00	\$1,861.73	\$3,848.92	\$2.07	\$0.00
201935	BRULE-BUFF	AMERICAN CREEK RENO	07/01/2019	12/31/2020	\$15,000.00	\$39,000.00	\$14,529.55	\$19,977.46	\$1.37	\$470.45
201936	BRULE-BUFF	BRUSH MANAGEMENT	07/01/2019	12/31/2020	\$10,000.00	\$20,000.00	\$9,745.00	\$11,553.30	\$1.19	\$255.00
201937	BRULE-BUFF	BURN DEFERRAL PILOT	07/01/2019	06/30/2020	\$20,000.00	\$40,000.00	\$0.00	\$0.00	#Num!	\$20,000.00
201938	BUTTE	LIVESTOCK WATER DEV II	07/01/2019	06/30/2021	\$20,000.00	\$70,000.00	\$20,000.00	\$45,020.11	\$2.25	\$0.00
201939	Davison	Awareness & Outreach	07/01/2019	12/31/2020	\$2,500.00	\$5,000.00	\$675.00	\$675.00	\$1.00	\$1,825.00
201940	DAVISON	MULTI-CO BRUSH MANAGEMENT	07/01/2019	06/30/2020	\$10,000.00	\$20,000.00	\$3,900.00	\$3,900.00	\$1.00	\$6,100.00
201941	EDMUNDS	CONSERVATION EDUCATION	07/01/2019	06/30/2020	\$1,500.00	\$3,500.00	\$1,255.38	\$2,155.38	\$1.72	\$244.62
201942	Edmunds	Conservation Practice	07/01/2019	06/30/2022	\$15,000.00	\$30,000.00	\$3,574.22	\$5,369.35	\$1.50	
201943	Grant	Cover Crops-Wind-Soil Erosion	07/01/2019	12/31/2020	\$9,784.00	\$26,825.00	\$5,008.36	\$5,125.16	\$1.02	\$4,775.64
201944	HAMLIN	2020 TREE PLANTING	07/01/2019	06/30/2020	\$10,800.00	\$23,640.00	\$0.00	\$0.00	#Num!	\$10,800.00
201945	JACKSON	SHELTERBELT ESTABLISHMENT	07/01/2019	06/30/2020	\$461.00	\$922.00	\$461.00	\$411.62	\$0.89	\$0.00
201946	KINGSBURY	CONSERVATION EDUCATION	07/01/2019	06/30/2020	\$3,000.00	\$5,500.00	\$3,000.00	\$5,464.95	\$1.82	\$0.00
201947	Miner	Pollinators & Rain Garden	07/01/2019	06/30/2022	\$12,250.00	\$25,350.00	\$4,342.58	\$6,411.06	\$1.48	\$0.00
201948	Pennington	Thinning for Forest Health	07/01/2019	06/30/2021	\$20,000.00	\$40,000.00	\$18,295.60	\$17,336.00	\$0.95	\$0.00
201949	Roberts	Conservation Ed & Awareness	07/01/2019	06/30/2021	\$2,500.00	\$5,000.00	\$965.42	\$965.42	\$1.00	\$0.00
201950	ROBERTS	WATERSHED COVER CROPS	07/01/2019	06/30/2020	\$11,606.15	\$30,769.80	\$5,417.07	\$11,480.67	\$2.12	\$6,189.08
201951	ROBERTS	2019-20 TREES/SHRUBS	07/01/2019	06/30/2020	\$5,784.00	\$13,459.00	\$304.80	\$608.70	\$2.00	\$5,479.20
201952	Spink	Regenerative Ag Demo Site	01/01/2019	06/30/2022	\$22,500.00	\$71,961.00	\$13,816.50	\$17,986.11	\$1.30	\$0.00

<u>Applic #</u>	<u>District</u>	<u>Project Title</u>	<u>Project Start</u>	<u>Project End</u>	<u>Approved Amt</u>	<u>Total Project</u>	<u>Payment Amount</u>	<u>Total Match</u>	<u>Leverage</u>	<u>Reverted \$</u>
201953	TODD	2019 COVER CROP	07/01/2019	12/31/2020	\$10,000.00	\$20,000.00	\$10,000.00	\$26,585.38	\$2.66	\$0.00
202001	Bennett	Bennett/Badlands Tree Planting	01/01/2020	12/31/2021	\$14,044.00	\$30,499.00	\$9,950.27	\$19,539.09	\$1.96	\$4,093.73
202002	BON HOMME	CONSERVATION ENHANCEMENT PROGR	01/01/2020	06/30/2021	\$20,000.00	\$53,750.00	\$16,648.11	\$20,553.52	\$1.23	\$0.00
202003	BUTTE	ENVIROTHON	01/01/2020	12/31/2020	\$20,000.00	\$122,000.00	\$0.00	\$0.00	#Num!	\$20,000.00
202004	CHARLES MI	BRUSH MANAGEMENT	01/01/2020	12/31/2021	\$30,000.00	\$65,000.00	\$30,000.00	\$35,400.00	\$1.18	\$0.00
202005	CHARLES MI	SHELTERBELTS	01/01/2020	12/31/2021	\$35,000.00	\$73,000.00	\$34,730.00	\$61,951.93	\$1.78	\$0.00
202006	Clark	Cover Crops	01/01/2020	06/30/2021	\$5,632.00	\$15,275.00	\$1,689.60	\$3,640.81	\$2.15	\$0.00
202007	Clark	Shelterbelts	01/01/2020	06/30/2021	\$15,845.64	\$49,057.56	\$15,106.90	\$24,916.96	\$1.65	\$0.00
202008	Clay	Conservation Education	01/01/2020	12/31/2020	\$3,000.00	\$6,000.00	\$0.00	\$0.00	#Num!	\$3,000.00
202009	Clay	Trees/Fabric	01/01/2020	12/31/2020	\$10,540.00	\$26,800.00	\$0.00	\$0.00	#Num!	\$10,540.00
202010	Davison	Cover Crops/Grazing	07/01/2020	12/31/2021	\$40,000.00	\$87,174.00	\$5,232.83	\$15,690.07	\$3.00	\$34,767.17
202011	Day	NE Glacial Lakes	07/01/2020	06/30/2022	\$20,410.00	\$284,253.00	\$4,188.59	\$6,518.80	\$1.56	\$0.00
202012	Douglas	Tree & Fabric Project	01/01/2020	06/30/2021	\$20,000.00	\$40,000.00	\$13,387.78	\$15,620.07	\$1.17	\$0.00
202013	HAMLIN	2020 SDACDE CONSERVATION PROMO	01/01/2020	12/31/2020	\$6,200.00	\$12,400.00	\$6,183.09	\$23,778.50	\$3.85	\$16.91
202014	Hanson	Shelterbelt/Renovation Project	01/01/2020	06/30/2021	\$20,000.00	\$45,000.00	\$1,829.20	\$2,417.48	\$1.32	\$18,170.80
202015	Hyde	Hyde/Hand Enhancements 7	01/01/2020	06/30/2021	\$25,000.00	\$49,850.00	\$23,679.28	\$22,430.68	\$0.95	\$0.00
202016	Jackson	Shelterbelt Establishment	01/01/2020	12/31/2021	\$5,365.00	\$10,730.00	\$5,154.21	\$5,171.37	\$1.00	\$0.00
202017	Jerauld	Windbreaks	01/01/2020	06/30/2021	\$13,750.00	\$24,800.00	\$10,449.41	\$10,883.47	\$1.04	\$6,085.55
202018	Jones	Shelterbelt Establishment	01/01/2020	06/30/2022	\$12,891.43	\$38,200.44	\$0.00	\$0.00	#Num!	\$0.00
202019	Kingsbury	Conservation Practices	01/01/2020	06/30/2021	\$15,000.00	\$30,000.00	\$16,368.26	\$23,188.76	\$1.42	\$0.00
202020	McCook	Shelterbelts	01/01/2020	12/31/2021	\$7,900.00	\$16,000.00	\$8,843.63	\$8,946.73	\$1.01	\$0.00
202021	McPherson	2020 Tree Project	01/01/2020	12/31/2022	\$20,000.00	\$38,648.19	\$18,450.60	\$21,607.97	\$1.17	\$1,549.40
202022	Mellette	2020 Tree Grant	01/01/2020	06/30/2021	\$8,000.00	\$16,000.00	\$8,000.00	\$11,459.87	\$1.43	\$0.00
202023	Miner	Conservation Awareness	01/01/2020	12/31/2020	\$1,200.00	\$2,500.00	\$1,200.00	\$3,585.11	\$2.99	\$0.00
202024	Miner	Soil Health Improvement	01/01/2020	12/31/2022	\$24,721.00	\$52,533.00	\$14,240.09	\$41,366.12	\$2.90	\$0.00
202025	Perkins	NW Area Tree Planting	01/01/2020	12/31/2021	\$17,390.62	\$62,750.12	\$17,342.47	\$21,415.35	\$1.23	\$48.15

<u>Applic #</u>	<u>District</u>	<u>Project Title</u>	<u>Project Start</u>	<u>Project End</u>	<u>Approved Amt</u>	<u>Total Project</u>	<u>Payment Amount</u>	<u>Total Match</u>	<u>Leverage</u>	<u>Reverted \$</u>
202026	Todd	2020 Multi-Practice Grant	01/01/2020	06/30/2021	\$25,000.00	\$65,154.00	\$32,079.47	\$81,623.00	\$2.54	\$0.00
202027	Union	Conservation Education	01/01/2020	12/31/2020	\$3,000.00	\$6,000.00	\$0.00	\$0.00	#Num!	\$3,000.00
202028	Union	Trees/Fabric	01/01/2020	12/31/2020	\$10,540.00	\$26,800.00	\$0.00	\$0.00	#Num!	\$10,540.00
202029	Brule-Buffalo	Renovation & Tree Planting	07/01/2020	12/31/2022	\$36,000.00	\$76,000.00	\$8,938.49	\$10,633.64	\$1.19	
202030	Custer	Thinning for a Healthier Fores	07/01/2020	06/30/2021	\$21,300.00	\$42,600.00	\$15,831.25	\$23,942.00	\$1.51	\$5,468.75
202031	Davison	Brush Management	07/01/2020	06/30/2021	\$10,000.00	\$20,000.00	\$3,206.25	\$3,206.25	\$1.00	
202032	Fall River	Keep it Covered	07/01/2020	06/30/2021	\$4,478.00	\$10,617.00	\$1,734.05	\$3,378.10	\$1.95	\$2,743.95
202033	Gregory	County Projects 6	07/01/2020	06/30/2021	\$27,500.00	\$55,000.00	\$15,807.06	\$18,624.89	\$1.18	\$11,692.94
202034	Hanson	Brush Management	07/01/2020	12/31/2020	\$7,500.00	\$15,800.00	\$7,500.00	\$9,351.86	\$1.25	\$0.00
202035	Hanson	Cover Crops	07/01/2020	12/31/2020	\$18,500.00	\$38,800.00	\$7,618.59	\$26,836.17	\$3.52	\$10,881.41
202036	Hughes	Tree Initiative	01/01/2021	06/30/2023	\$35,000.00	\$83,250.00	\$23,884.34	\$44,194.48	\$1.85	
202037	Kingsbury	Urban Forestry	07/01/2020	06/30/2022	\$9,000.00	\$18,000.00	\$8,499.04	\$10,771.35	\$1.27	
202038	Minnehaha	Wildlife Habitat Project	07/01/2020	12/31/2021	\$9,868.00	\$48,429.00	\$6,889.89	\$14,083.42	\$2.04	\$2,978.11
202039	Stanley	Tree Planting	07/01/2020	06/30/2022	\$9,314.00	\$18,831.00	\$7,553.82	\$10,547.10	\$1.40	
202101	Beadle	Shelterbelt Program	01/01/2021	12/31/2021	\$11,825.00	\$27,212.00	\$8,443.07	\$11,026.12	\$1.31	\$3,381.93
202102	Brule-Buffalo	Multi-County Brush Management	01/01/2021	06/30/2022	\$33,625.00	\$68,750.00	\$7,995.00	\$8,655.00	\$1.08	
202103	Butte	Multi-County Ditch to Pipe	01/01/2021	06/30/2022	\$25,000.00	\$50,000.00	\$16,709.60	\$45,656.81	\$2.73	
202104	Butte	SD Envirothon	01/01/2021	12/31/2022	\$62,000.00	\$124,000.00	\$2,025.77	\$2,516.00	\$1.24	
202105	Charles Mix	Shelterbelt	01/01/2021	12/31/2022	\$23,000.00	\$48,000.00	\$15,789.26	\$16,813.25	\$1.06	
202106	Charles Mix	Brush Management	01/01/2021	12/31/2022	\$11,250.00	\$24,500.00	\$10,837.50	\$10,837.50	\$1.00	\$412.50
202107	Clark	Shelterbelt	01/01/2021	06/30/2023	\$17,511.64	\$52,923.70	\$8,923.26	\$14,999.34	\$1.68	
202108	Davison	Awareness & Outreach	01/01/2021	12/31/2021	\$2,000.00	\$4,000.00	\$5,889.50	\$26,938.37	\$4.57	\$700.50
202109	Davison	DCD Tree Planting	01/01/2021	12/31/2021	\$12,000.00	\$24,000.00	\$3,448.04	\$3,448.04	\$1.00	\$8,551.96
202110	Edmunds	Conservation Education	01/01/2021	12/31/2021	\$750.00	\$1,800.00	\$750.00	\$1,952.05	\$2.60	\$0.00
202111	Hamlin	2021 Tree Projects	01/01/2021	06/30/2022	\$10,325.00	\$25,850.00	\$9,880.00	\$15,257.72	\$1.54	
202112	Hamlin	SDACDE Outreach 2021	01/01/2021	12/31/2021	\$6,200.00	\$12,800.00	\$6,003.63	\$9,708.86	\$1.62	\$196.37
202113	Jackson	Shelterbelt Establishment	01/01/2021	06/30/2022	\$833.00	\$1,666.00	\$458.44	\$642.19	\$1.40	\$374.56

<u>Applic #</u>	<u>District</u>	<u>Project Title</u>	<u>Project Start</u>	<u>Project End</u>	<u>Approved Amt</u>	<u>Total Project</u>	<u>Payment Amount</u>	<u>Total Match</u>	<u>Leverage</u>	<u>Reverted \$</u>
202114	Kingsbury	Conservation Education	01/01/2021	06/30/2022	\$4,500.00	\$9,000.00	\$4,613.50	\$5,121.50	\$1.11	
202115	Kingsbury	Conservation Practice Grant	01/01/2021	06/30/2022	\$26,000.00	\$52,000.00	\$26,000.00	\$50,522.74	\$1.94	
202116	Lawrence	Thinning for Forest Health	01/01/2021	12/31/2022	\$34,000.00	\$66,500.00	\$5,785.00	\$21,215.00	\$3.67	
202117	Mellette	2021 MC Tree Grant	01/01/2021	06/30/2022	\$18,000.00	\$37,000.00	\$15,875.75	\$17,380.82	\$1.09	
202118	Mellette	2021 MC Multi-Practice Grant	01/01/2021	12/31/2022	\$40,000.00	\$117,500.00	\$39,998.92	\$102,209.94	\$2.56	
202119	Miner	Conservation Edu & Awareness	01/01/2021	12/31/2021	\$1,400.00	\$2,850.00	\$1,400.00	\$4,744.15	\$3.39	\$0.00
202120	Perkins	NW Area Tree Planting	01/01/2021	12/31/2022	\$29,923.22	\$90,512.60	\$29,923.22	\$39,558.63	\$1.32	
202121	Todd	2021 Cover Crop Grant	01/01/2021	06/30/2022	\$15,000.00	\$30,000.00	\$1,013.76	\$2,312.64	\$2.28	\$13,986.24
202122	Clark	Conservation Edu & Awareness	07/01/2021	06/30/2023	\$1,500.00	\$2,200.00	\$0.00	\$0.00	#Num!	
202123	Custer	Thinning for Resilient Forest	07/01/2021	06/30/2023	\$26,175.00	\$52,350.00	\$1,350.00	\$1,704.00	\$1.26	
202124	Davison	Multi-District Brush Mgmt	07/01/2021	06/30/2022	\$10,000.00	\$20,000.00	\$9,975.00	\$9,975.00	\$1.00	\$25.00
202125	East Penningt	Multi-Purpose Grant	07/01/2021	06/30/2023	\$75,000.00	\$150,000.00	\$0.00	\$0.00	#Num!	
202126	Fall River	Thinning for a Healthy Forest	07/01/2021	06/30/2022	\$13,000.00	\$26,500.00	\$0.00	\$0.00	#Num!	
202127	Grant	Conservation Edu & Awareness	07/01/2021	06/30/2022	\$2,400.00	\$3,600.00	\$1,379.44	\$1,231.44	\$0.89	
202128	Hanson	Brush Management	07/01/2021	12/31/2021	\$18,000.00	\$36,800.00	\$8,475.00	\$12,862.50	\$1.52	\$9,525.00
202129	Hyde	Hyde/Faulk Enhancements	07/01/2021	06/30/2023	\$53,490.00	\$106,730.00	\$0.00	\$0.00	#Num!	
202130	Jones	Dry Creek Fire Recovery Grant	07/01/2021	06/30/2022	\$20,000.00	\$25,000.00	\$0.00	\$0.00	#Num!	
202131	Miner	East Central Range Stewardship	07/01/2021	12/31/2022	\$48,000.00	\$153,750.00	\$13,900.78	\$37,698.47	\$2.71	
202132	Pennington	Thinning for Forest Health	07/01/2021	06/30/2023	\$32,500.00	\$65,000.00	\$6,500.00	\$6,500.00	\$1.00	
202133	Roberts	2022 Trees/Shrubs	01/01/2022	06/30/2023	\$9,550.00	\$19,250.00	\$801.27	\$1,165.98	\$1.46	
202134	Roberts	Conservation Edu & Awareness	07/01/2021	12/31/2022	\$3,282.75	\$6,565.50	\$3,282.75	\$3,453.96	\$1.05	
202135	Spink	80th Anniversary Edu & Promo	07/01/2021	12/31/2021	\$4,900.00	\$9,500.00	\$4,569.30	\$7,522.17	\$1.65	\$330.70
202136	Todd	2022 TC Tree Grant	07/01/2021	06/30/2023	\$25,000.00	\$50,000.00	\$0.00	\$0.00	#Num!	
202201	Beadle	Shelterbelt Program	01/01/2022	12/31/2022	\$10,000.00	\$19,450.00	\$8,801.15	\$17,077.22	\$1.94	
202202	Bennett	Bennett/Badlands Tree Planting	01/01/2022	12/31/2022	\$12,500.00	\$14,548.00	\$5,692.35	\$6,221.02	\$1.09	
202203	BON HOMME	CONSERVATION ENHANCEMENT PROGR	01/01/2022	06/30/2023	\$20,000.00	\$57,806.00	\$4,808.08	\$8,095.21	\$1.68	

<u>Applic #</u>	<u>District</u>	<u>Project Title</u>	<u>Project Start</u>	<u>Project End</u>	<u>Approved Amt</u>	<u>Total Project</u>	<u>Payment Amount</u>	<u>Total Match</u>	<u>Leverage</u>	<u>Reverted \$</u>
202204	Butte	Multi-County Ditch to Pipe	01/01/2022	12/31/2022	\$20,000.00	\$45,000.00	\$0.00	\$0.00	#Num!	
202205	Charles Mix	Brush Management	01/01/2022	12/31/2023	\$20,000.00	\$48,700.00	\$2,062.50	\$2,437.50	\$1.18	
202206	Charles Mix	Shelterbelts	01/01/2022	12/31/2023	\$20,000.00	\$42,000.00	\$13,120.53	\$18,877.18	\$1.44	
202207	CORSON	Tree Grant	01/01/2022	12/31/2022	\$6,123.61	\$12,658.83	\$1,619.11	\$1,569.61	\$0.97	
202208	Davison	Multi-County Brush Management	01/01/2022	12/31/2022	\$20,000.00	\$20,000.00	\$16,537.50	\$16,851.00	\$1.02	
202209	Davison	DCD Tree Planting	01/01/2022	12/31/2022	\$15,000.00	\$15,000.00	\$12,049.09	\$14,661.65	\$1.22	
202210	Davison	Awareness & Outreach	01/01/2022	12/31/2022	\$1,500.00	\$1,500.00	\$425.00	\$425.00	\$1.00	
202211	Edmunds	Conservation Education	01/01/2022	06/30/2023	\$1,000.00	\$2,000.00	\$273.27	\$273.27	\$1.00	
202212	Gregory	County Projects 7	01/01/2022	06/30/2023	\$45,000.00	\$45,000.00	\$11,750.00	\$14,148.47	\$1.20	
202213	Hamlin	2022 SDACD Outreach	01/01/2022	12/31/2022	\$8,250.00	\$8,250.00	\$7,688.00	\$10,790.10	\$1.40	
202214	Hamlin	Multi-Use Projects	01/01/2022	12/31/2023	\$20,000.00	\$39,149.00	\$368.25	\$859.25	\$2.33	
202215	Jerauld	Windbreak Tree Planting	01/01/2022	06/30/2023	\$15,000.00	\$30,000.00	\$0.00	\$0.00	#Num!	
202216	Jones	MULTI-PRACTICE VII	01/01/2022	12/31/2023	\$60,000.00	\$136,350.00	\$1,066.23	\$2,487.86	\$2.33	
202217	Kingsbury	General Conservation	01/01/2022	06/30/2023	\$25,000.00	\$25,000.00	\$0.00	\$0.00	#Num!	
202218	Kingsbury	Urban Infrastructure	01/01/2022	06/30/2023	\$10,000.00	\$10,000.00	\$0.00	\$0.00	#Num!	
202219	Marshall	Multi-purpose & Multi-practice	01/01/2022	12/31/2024	\$50,000.00	\$182,495.00	\$1,981.24	\$4,622.88	\$2.33	
202220	MCCOOK	Shelterbelts	01/01/2020	06/30/2023	\$12,500.00	\$25,000.00	\$0.00	\$0.00	#Num!	
202221	Miner	Public Awareness Conservation	01/01/2022	12/31/2022	\$2,250.00	\$2,250.00	\$0.00	\$0.00	#Num!	
202222	Perkins	NW Area Tree Planting	01/01/2022	12/31/2022	\$33,000.00	\$94,048.00	\$24,627.28	\$33,607.04	\$1.36	
202223	Spink	2022 Workshop & Promotion	01/01/2022	12/31/2022	\$6,000.00	\$6,000.00	\$0.00	\$0.00	#Num!	
202224	Todd	2022 TC Multi-Practice Grant	01/01/2022	06/30/2023	\$20,000.00	\$30,000.00	\$0.00	\$0.00	#Num!	
202225	Butte	Multi-County Ditch & Pipe	07/01/2022	06/30/2023	\$22,500.00	\$55,000.00	\$0.00	\$0.00	#Num!	
202226	Clark	Shelterbelt/Grass/Cover Crop	07/01/2022	06/30/2024	\$15,000.00	\$47,990.75	\$0.00	\$0.00	#Num!	
202227	Davison	Cover Crop/Grazing	07/01/2022	12/31/2022	\$25,000.00	\$25,000.00	\$2,518.40	\$2,613.10	\$1.04	
202228	Day	Northeast Glacial Lakes	07/01/2022	06/30/2023	\$15,000.00	\$279,042.00	\$0.00	\$0.00	#Num!	
202229	Edmunds	North Missouri Cover Crop	07/01/2022	12/31/2023	\$30,000.00	\$65,000.00	\$0.00	\$0.00	#Num!	
202230	Gregory		07/01/2022	12/31/2023	\$110,000.00	\$220,000.00	\$0.00	\$0.00	#Num!	

<u>Applic #</u>	<u>District</u>	<u>Project Title</u>	<u>Project Start</u>	<u>Project End</u>	<u>Approved Amt</u>	<u>Total Project</u>	<u>Payment Amount</u>	<u>Total Match</u>	<u>Leverage</u>	<u>Reverted \$</u>
202231	Hanson	2022 Brush Management Project	07/01/2022	12/31/2022	\$5,000.00	\$10,800.00	\$0.00	\$0.00	#Num!	
202232	Hanson	Hanson Shelterbelt Project	07/01/2022	12/31/2023	\$7,500.00	\$16,500.00	\$0.00	\$0.00	#Num!	
202233	Hyde	Hyde/Faulk Enhancements Proj 2	07/01/2022	06/30/2024	\$35,000.00	\$70,154.00	\$0.00	\$0.00	#Num!	
202234	Lincoln	Building Community By Cons.	07/01/2022	12/31/2022	\$15,000.00	\$15,000.00	\$0.00	\$0.00	#Num!	
202235	Perkins	2022 Seeding/Pipeline Grant	07/01/2022	06/30/2023	\$12,000.00	\$38,547.20	\$0.00	\$0.00	#Num!	
202236	Roberts	Conservation Outreach & Promo	07/01/2022	12/31/2022	\$3,000.00	\$6,000.00	\$0.00	\$0.00	#Num!	
<b><u>Grand Total:</u></b>					<b>\$23,989,588.74</b>	<b>\$102,847,508.00</b>	<b>\$17,713,279.38</b>	<b>\$53,974,248.00</b>	<b>\$3.05</b>	<b>\$5,091,908.55</b>

**Leverage is \$3.60 (NOT including Big Sioux Nursery Grants of \$1,097,350.18)**

**ALL CAPS indicates project is complete**

**Number in (1) indicates how many districts are active co-sponsors**





**DEPARTMENT of AGRICULTURE  
and NATURAL RESOURCES**

JOE FOSS BUILDING  
523 E CAPITOL AVE  
PIERRE SD 57501-3182  
danr.sd.gov

**To:** South Dakota Conservation Districts

**From:** Bill Smith

**CC:** South Dakota Conservation Commission, Conservation Districts, SDACD,  
Conservation Commission Advisory Members

**Date:** September 9, 2022

**Re:** 2023 Cost-share Docket

The South Dakota Conservation Commission is requesting comments from the conservation districts for changes intended for the 2023 Conservation Commission Cost-share Docket. Conservation districts interested in proposing changes should draft a letter outlining conservation practices they would like to have added or changed in the docket. Additional information and supporting documentation should include:

- Describing the importance of the new practice or recommended change
- Suggested cost-share rates and unit costs
- Other information and documentation (like material quotes from local supply stores to support their docket cost-share requests) that would assist the Commission to make revisions for the 2023 docket.

All suggested comments must be submitted to me by October 3, 2022. That deadline will allow our staff enough time to research the recommendations and prepare them for consideration at the November Conservation Commission meeting.

Conservation districts interested in further promoting their suggestions are encouraged to attend that meeting. The date, time and location will be announced later.

A copy of the 2022 Commission Docket can be viewed at:

[2022 Commission Docket](#)

For further assistance, please contact Alex Roeber (Alex.Roeber@state.sd.us), Jordan Turgeon (Jordan.Turgeon@state.sd.us), or me (Bill.Smith@state.sd.us).



