

# South Dakota Annual Report of Nursing Education Programs



## 2014

*South Dakota Board of Nursing*



4305 S. Louise Avenue Suite 201  
Sioux Falls SD 57106

722 Main Street Suite 3  
Spearfish SD 57783

[www.nursing.sd.gov](http://www.nursing.sd.gov)

---

## Introduction

This *2014 South Dakota Annual Report of Nursing Education Programs* was prepared by the South Dakota Board of Nursing. The report provides statistical information on South Dakota's approved nursing education programs including data on student enrollment, program capacity, student demographics, curriculum, graduates, NCLEX® reports, and faculty information and is compared with historical data. The information provided is required for ongoing approval in accordance with ARSD 20:48:07.

*Suggested Citation:* South Dakota Board of Nursing, *South Dakota Annual Report of Nursing Education Programs: 2014*.

© 2015 South Dakota Board of Nursing. All materials related to this copyright may be photocopied for non-commercial scientific or education advancement.

---

## Table of Contents

Approved Nursing Education Programs—2014 .....	4
Total Number of Nursing Programs: 2005-2014 .....	4
Nursing Education Program Contact and Accreditation Information.....	6
Practical Nursing Programs .....	6
Associate Degree Programs .....	6
Baccalaureate Degree Programs .....	7
Master's Degree Programs .....	8
Doctoral Degree Programs .....	8
Nursing Program Enrollment.....	9
Enrollment in Programs Leading to RN Licensure .....	9
Enrollment in Programs Leading to LPN Licensure .....	10
Total Student Enrollment in Nursing Education Programs .....	10
Nursing Education Program Capacity .....	13
Capacity in Nursing Programs Leading to RN Licensure .....	13
Capacity in Nursing Programs Leading to LPN Licensure .....	13
Nursing Program Learning Options.....	14
Baccalaureate RN Upward Mobility .....	14
Associate RN Upward Mobility .....	15
Characteristics of Student Population .....	16
Gender and Ethnicity of Enrolled Students .....	17
Age of Enrolled Nursing Students .....	17
State of Residence of Enrolled Nursing Students .....	19
Nursing Education Curriculum .....	20
Nursing Graduates.....	21
Number of RN Graduates .....	21
Number of PN Graduates.....	22
Characteristics of Nursing Graduates .....	22
Baccalaureate and Associate Degree NCLEX-RN® Results.....	24
Practical Nurse Graduate NCLEX-PN® Results .....	25
Graduates Licensed as RNs in South Dakota.....	26
Graduates Licensed as LPNs in South Dakota .....	26
Nursing Education Faculty .....	27
Employment Status .....	27
Faculty Characteristics.....	28
Highest Degree Held by Program Type .....	30
Faculty Enrolled in Education Programs Leading to an Advanced Degree: 2014.....	31
Historical Notes.....	32

## Approved Nursing Education Programs – 2014

Approved Nursing Education Program	Pre-Licensure Programs						Post-Licensure Programs		
	LPN	LPN to RN Associate	LPN to RN Baccalaureate	RN Associate	RN Baccalaureate	RN Accelerated Baccalaureate	RN to Baccalaureate	Masters	PhD/DNP
1. Augustana College					X		X		
2. Dakota Wesleyan University (DWU)		X		X			X*		
3. Lake Area Technical Institute (LATI)	X								
4. Mount Marty College (MMC)	X		X		X		X	X	
5. National American University (NAU)					X		X	X	
6. Oglala Lakota College (OLC)				X					
7. Presentation College			X	X	X		X		
8. Sinte Gleska University (SGU)	X								
9. Sisseton Wahpeton College (SWC)	X								
10. South Dakota State University (SDSU)					X	X	X	X	X
11. Southeast Technical Institute (STI)	X	X							
12. University of Sioux Falls (USF)					X	X	X		
13. University of South Dakota (USD)		X		X	X		X		
14. Western Dakota Tech (WDT)	X								
<b>Total</b>	<b>6</b>	<b>3</b>	<b>2</b>	<b>4</b>	<b>7</b>	<b>2</b>	<b>8</b>	<b>3</b>	<b>1</b>

\*Denotes program that did not have a generic Baccalaureate program at the time of data collection

### Total Number of Nursing Programs: 2005 – 2014

The total number of approved nursing education programs preparing registered nurse and practical nurse candidates for licensure from 2005 to 2014 is displayed in the table below.

Year	Pre-Licensure Programs 2005 – 2014			Total Programs
	Baccalaureate Degree Programs	Associate Degree Programs	Practical Nurse Programs	
2005	4	4	5	13
2006	4	4	5	13
2007	4	4	5	13
2008	4	5	5	14
2009	6	5	5	16
2010	6	5	5	16
2011	6	5	6	17
2012	6	5	6	17
2013	7	4	6	17
<b>2014</b>	<b>7</b>	<b>4</b>	<b>6</b>	<b>17</b>



## Nursing Education Program Contact and Accreditation Information Fall 2013, Spring 2014, Summer 2014

\*contact information current for calendar year 2015

Practical Nursing	Chair/Dean/Director	State Approval	Accreditation
Lake Area Technical Institute 1201 Arrow Avenue Watertown SD 57201	Patricia M. Foley, MS, RN Nursing Department Head (605) 882-5284 ext 474 foleyp@lakeareatech.edu	Full	Higher Learning Commission  ACEN
Mount Marty College 1105 West 8 <sup>th</sup> Street Yankton SD 57078-3724	Sister Kathryn Burt, RN, PhD, MSN Interim Chief Nurse Administrator (605) 668-1594 kathryn.burt@mtmc.edu	Interim	Higher Learning Commission
Sinte Gleska University 101 Antelope Lake Circle PO Box 105, Mission SD 57555	Virginia Cozad, BSN, MSN, ARNP, CDE, CLNC – Head of Nursing Program (605) 856-8288 virginia.cozad@sintegleska.edu	Probation	Higher Learning Commission
Sisseton Wahpeton College Old Agency PO Box 689 Sisseton SD 57262-0689	Nola Ragan, RN, MSN Director of Nursing Program (605) 698-3966 ext 1261 nragan@swc.tc	Probation	Higher Learning Commission
Southeast Technical Institute 2320 North Career Avenue Sioux Falls SD 57107	Kristin Possehl, RN, MSN, MEd Nursing Program Director (605) 367-4753 kristin.possehl@southteasttech.edu	Full	Higher Learning Commission
Western Dakota Tech 800 Mickelson Drive Rapid City SD 57703-4018	Sonja Love Nursing Program Director (605) 718-2952 Sonja.love@wdt.edu	Probation	Higher Learning Commission
Associate Degree	Chair/Dean/Director	State Approval	Accreditation
Dakota Wesleyan University 1200 West University Avenue Mitchell SD 57301-0909	Diane Sandhoff, MS, RN Administrative Chair (605) 995-2119 disandho@dwu.edu	Full	Higher Learning Commission  ACEN
Oglala Lakota College PO Box 861 Pine Ridge SD 57770	Amy Hindman, PhD, RN Chair, Nursing Department (605) 867-5856 ahindman@olc.edu	Full	Higher Learning Commission
Presentation College 1500 North Main Street Aberdeen SD 57401	Illa Reeve, RN, MS, EdD Chair, Nursing Department (605) 229-8473 illa.reeve@presentation.edu	Full	Higher Learning Commission  ACEN
Southeast Technical Institute 2320 North Career Avenue Sioux Falls SD 57107	Kristin Possehl, RN, MSN, MEd Nursing Program Director (605) 367-4753 kristin.possehl@southteasttech.edu	Interim	Higher Learning Commission  ACEN
University of South Dakota 414 East Clark Street Julian 313 Vermillion SD 57069-2390	Carla Dieter, Chair; EdD, FNP-BC Nursing Chair and Professor (605) 357-1553 carla.dieter@usd.edu	Full	Higher Learning Commission  ACEN

Baccalaureate Degree	Chair/Dean/Director	State Approval	Accreditation
Augustana College 2001 S Summit Avenue Sioux Falls SD 57197	Pamela Schroeder, EdD, RN Head of Nursing Program (605) 274-4690 schroeder@augie.edu	Full	Higher Learning Commission CCNE
Mount Marty College 1105 West 8 <sup>th</sup> Street Yankton SD 57078-3724	Sister Kathryn Burt, RN, PhD, MSN Interim Chief Nurse Administrator (605) 668-1594 kathryn.burt@mtmc.edu	Full	Higher Learning Commission CCNE
National American University Generic BSN Program 5801 South Corporate Place Sioux Falls SD 57108	Dodie Serafini, RN, BS, MSN, PhD (c), CNE School of Nursing Dean (303) 562-8688 dserafini@national.edu	Interim	Higher Learning Commission CCNE
5301 South Hwy 16 Rapid City SD 57701			
Presentation College 1500 North Main Street Aberdeen SD 57401	Illa Reeve, RN, MS, EdD Chair, Nursing Department (605) 229-8473 illa.reeve@presentation.edu	Full	Higher Learning Commission ACEN
South Dakota State University Box 2275 Brookings SD 57007-0296	Nancy Fahrenwald, PhD, RN, FAAN Dean of College of Nursing (605) 688-5178 nancy.fahrenwald@sdstate.edu	Full	Higher Learning Commission CCNE
University of Sioux Falls 1102 West 22 <sup>nd</sup> Street Sioux Falls SD 57105	Jessica Cherenegar, DNP, RN Director, School of Nursing (605) 331-6671 jessica.cherenegar@usioxford.edu	Full	Higher Learning Commission CCNE
University of South Dakota 414 East Clark Street Julian 313 Vermillion SD 57069-2390	Carla Dieter, Chair; EdD, FNP-BC Nursing Chair and Professor (605) 357-1553 carla.dieter@usd.edu	Interim	Higher Learning Commission CCNE

Masters Degree	Chair/Dean/Director	Accreditation
Mount Marty College 1105 West 8 <sup>th</sup> Street Yankton SD 57078-3724	Sister Kathryn Burt, RN, PhD, MSN Interim Chief Nurse Administrator (605) 668-1594 kathryn.burt@mtmc.edu	Higher Learning Commission
National American University 5301 S Highway 16 Suite 200 Rapid City SD 57701	Dodie Serafini, RN, BS, MSN, PhD (c), CNE School of Nursing Dean (303) 562-8688 dserafini@national.edu	Higher Learning Commission CCNE
South Dakota State University Box 2275 Brookings SD 57007	Nancy Fahrenwald, PhD, RN, FAAN Dean of College of Nursing (605) 688-5178 Nancy.fahrenwald@sdstate.edu	Higher Learning Commission CCNE

Doctoral Degree	Chair/Dean/Director	Accreditation
South Dakota State University Box 2275 Brookings SD 57007	Nancy Fahrenwald, PhD, RN, FAAN Dean of College of Nursing (605) 688-5178 Nancy.fahrenwald@sdstate.edu	Higher Learning Commission CCNE



## Nursing Program Enrollment

Enrollment is defined as the number of undergraduate RN and LPN pre-licensure students who were accepted into the nursing major and enrolled in nursing courses. Enrollment numbers were reported as of the institution's official fall reporting date. Public nursing schools used the date of the fall census data extract; private schools used the IPEDS reporting date of October 15. The reporting period was defined as October 1, 2013 through September 30, 2014, or "Fall 2013, Spring 2014, Summer 2014".

Full-time students were those enrolled in 12 or more semester credits, and part-time students were those enrolled in fewer than 12 semester credits. New students were those enrolled for the first time in the nursing program during the reporting period, and continuing students were those enrolled in the nursing program at all other points of the program's curriculum sequence.

### Enrollment in Programs Leading to RN Licensure

#### Baccalaureate Degree

Baccalaureate degree programs had a total of 1,370 nursing students enrolled in 2014 as reflected in the table below. Included in the total enrollment were new students and continuing students. Data reflected an increase of approximately 19% in baccalaureate degree enrollment since 2013.

Baccalaureate Program Enrollment	2014 Students				2014 Total Students	2013 Total Students	Difference 2013 – 2014
	New	Continuing	Full-time	Part-time			
Augustana College	58	48	104	2	106	95	+11
Mount Marty College	31	60	88	3	91	92	-1
National American University	26	20	46	0	46	41	+5
Presentation College BSN	86	110	87	109	196	179	+17
South Dakota State University	320	419	739	0	739	597	+142
University of Sioux Falls	57	73	130	0	130	148	-18
University of South Dakota	62	0	62	0	62	0	+62
<b>Total</b>	<b>640</b>	<b>730</b>	<b>1256</b>	<b>114</b>	<b>1370</b>	<b>1152</b>	<b>+218</b>

#### Associate Degree

Total enrollment for associate degree programs for RN licensure in 2014 was 541, a 26% decrease from the previous year.

Associate Program Enrollment	2014 Students				2014 Total Students	2013 Total Students	Difference 2013 – 2014
	New	Continuing	Full-time	Part-time			
Dakota Wesleyan University	65	46	103	8	111	111	0
Oglala Lakota College	12	11	23	0	23	27	-4
^Presentation College ADN	0	0	0	0	0	7	-7
*Sisseton Wahpeton ADN	0	0	0	0	0	8	-8
Southeast Technical ADN	25	25	14	36	50	62	-12
University of South Dakota	106	251	60	297	357	521	-164
<b>Total</b>	<b>208</b>	<b>333</b>	<b>200</b>	<b>341</b>	<b>541</b>	<b>736</b>	<b>-195</b>

^Presentation College closed the ADN program at the end of 2013.

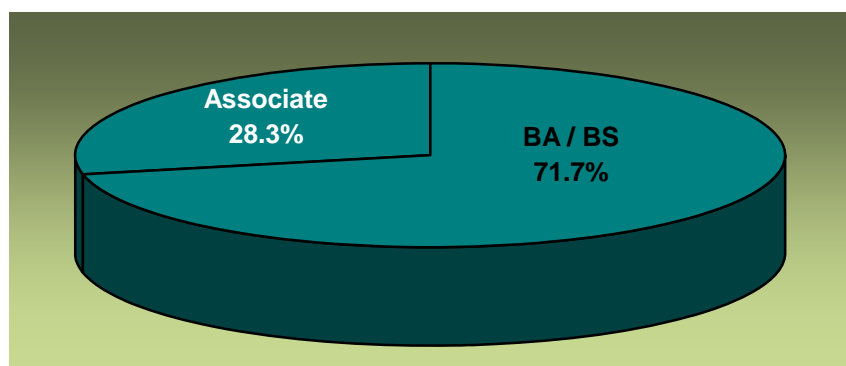
\* On hold

### Total Baccalaureate and Associate Degree

Total baccalaureate and associate program enrollment saw a 1.2% increase in 2014, as reflected in the chart below.

Program Type	2014 Students		2014 Total Students	2013 Total Students	Difference 2013-2014
	Full-time	Part-Time			
Baccalaureate Degree	1256	114	1370	1152	+218
Associate Degree	200	341	541	736	-195
<b>Total</b>	<b>1456</b>	<b>455</b>	<b>1911</b>	<b>1888</b>	<b>+23</b>

Percentage of RN Enrollment by Program Type - 2014



### Enrollment in Programs Leading to LPN Licensure

Total practical nursing program enrollment for new and continuing students in 2014 was 434 students as displayed in the table below, an increase of 3 students from the previous academic year.

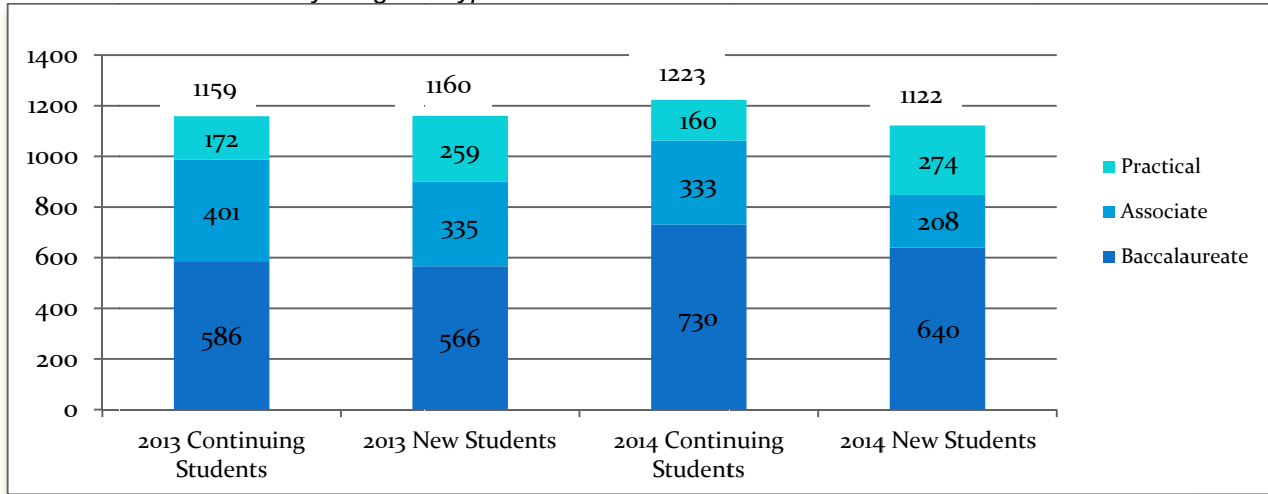
Practical Program Enrollment	2014 Students				2014 Total Students	2013 Total Students	Difference 2013-2014
	New	Continuing	Full- time	Part- time			
Lake Area Technical	87	25	68	44	112	104	+8
Mount Marty PN	10	0	4	6	10	12	-2
Sinte Gleska University	13	0	13	0	13	10	+3
Sisseton Wahpeton PN	11	0	11	0	11	0	+11
Southeast Technical PN	119	122	180	61	241	252	-11
Western Dakota Technical	34	13	46	1	47	53	-6
<b>Total</b>	<b>274</b>	<b>160</b>	<b>322</b>	<b>112</b>	<b>434</b>	<b>431</b>	<b>+3</b>

### Total Student Enrollment in Nursing Education Programs

As depicted in the figure and table below, total new and continuing student enrollment in South Dakota's baccalaureate nursing education programs increased in 2014. Total student enrollment for associate nursing education programs decreased. In addition, enrollment in practical nursing program remained nearly static.

In 2013 there was a total of 1,160 new practical, associate, and baccalaureate students and 1,159 continuing students for a total of 2,319; compared to 1,122 new students and 1,223 continuing students in 2014, a total of 2,345 students. Data reflected a slight growth in enrollment of 26 students from 2013 to 2014 (an increase of approximately 1%).

Total Student Enrollment by Program Type



Percent Change for Nursing Enrollment by Program Type

Program Type	Total Students				Difference 2013 – 2014	Percent Change 2013-2014
	2013	Percent of Total 2013 Enrolled	2014	Percent of Total 2014 Enrolled		
Baccalaureate	1152	49.7%	1370	58.4%	+218	+8.7%
Associate	736	31.7%	541	23.1%	-195	-8.6%
Practical	431	18.6%	434	18.5%	+3	-0.1%
<b>Total</b>	<b>2319</b>	<b>100%</b>	<b>2345</b>	<b>100%</b>	<b>+26</b>	<b>1.12%</b>

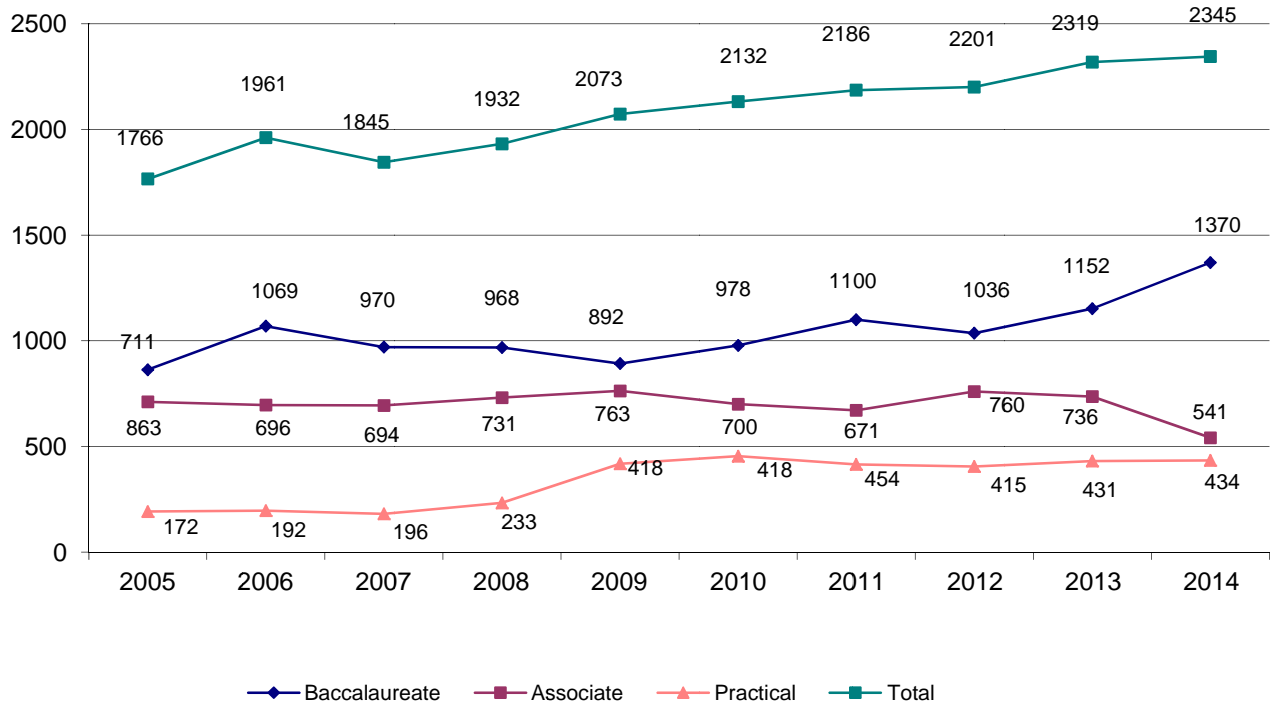
The graph below depicts the total number of students in the baccalaureate and associate RN programs and includes practical nursing students for a total enrollment of 2,345 in 2014, a 1% overall increase in enrollment.

Total Nursing Program Enrollment: 2005 – 2014

Year (October 1)	Baccalaureate		Associate		Total RN Program	Practical	Total Enrollment
	#	% of RN	#	% of RN			
2005	863	54.8%	711	45.2%	1574	192	1766
2006	1069	60.6%	696	39.4%	1765	196	1961
2007	970	58.3%	694	41.7%	1664	181	1845
2008	968	57.0%	731	43.0%	1699	233	1932
2009	892	55.9%	763	44.1%	1655	418	2073
2010	978	58.3%	700	41.7%	1678	454	2132
2011	1100	62.1%	671	37.8%	1771	415	2186
2012	1036	57.7%	760	42.3%	1796	405	2201
2013	1152	61.0%	736	39.0%	1888	431	2319
<b>2014</b>	<b>1370</b>	<b>71.7%</b>	<b>541</b>	<b>28.3%</b>	<b>1911</b>	<b>434</b>	<b>2345</b>

\*Excludes RN Upward Mobility students

Total Enrollment 2005-2014



## Nursing Education Program Capacity

### Capacity in Nursing Programs Leading to RN Licensure

Capacity was defined as the number of seats available for newly admitted students during the reporting period.

South Dakota baccalaureate and associate degree RN programs received 1,160 qualified student applications in 2014, with 890 nursing students accepted and enrolled.

#### *Baccalaureate and Associate Degree RN Capacity: 2014*

RN Nursing Education Program	Nursing Student Capacity	Qualified Applications Received	Not Accepted	Accepted & Declined	No Space	Dropped Pre-Census	Accepted & Enrolled
Augustana College	64	70	5	7	0	0	58
Dakota Wesleyan University	96	90	0	25	0	0	65
National American University	48	26	0	0	0	0	26
Mount Marty College	unlimited	35	1	1	0	2	31
Oglala Lakota College	20	16	0	3	0	1	12
Presentation BSN	96	110	1	23	0	0	86
Southeast Technical Institute	48	30	0	0	0	5	25
South Dakota State University	344	491	26	28	105	12	320
University of Sioux Falls	unlimited	76	0	19	0	0	57
University of South Dakota	300	216	0	6	0	0	210
<b>Total</b>	<b>^1016</b>	<b>1160</b>	<b>33</b>	<b>112</b>	<b>105</b>	<b>20</b>	<b>890</b>

*\*Excludes RN upward mobility programs; these students already hold RN licenses*

*^Unlimited: If program does not have a formal limit on seats for new students, respondents indicated "Unlimited" per the minimum data set instructions*

### Capacity in Nursing Programs Leading to LPN Licensure

Practical nursing programs received 316 qualified applications; 274 students were accepted and enrolled.

#### *Practical Nursing Program Capacity: 2014*

PN Nursing Education Program	Nursing Student Capacity	Qualified Applications Received	Not Accepted	Accepted & Declined	No Space	Dropped Pre-Census	Accepted & Enrolled
Lake Area Technical	100	120	0	17	13	3	87
Mount Marty College PN	^unlimited	10	0	0	0	0	10
Sinte Gleska University	13	13	0	0	0	0	13
Sisseton Wahpeton PN	20	11	0	0	0	0	11
Southeast Technical PN	136	128	0	6	0	3	119
Western Dakota Technical	52	34	0	0	0	0	34
<b>Total</b>	<b>^321</b>	<b>316</b>	<b>0</b>	<b>23</b>	<b>13</b>	<b>6</b>	<b>274</b>

*^Unlimited: If program does not have a formal limit on seats for new students, respondents indicated "Unlimited"*

## Nursing Program Learning Options

All South Dakota nursing education programs offered a full-time nursing education option; a majority of the programs also offered a part-time option.

### *Baccalaureate Program Options Offered*

Baccalaureate Program	Full-Time	Part-Time
Augustana College	Yes	Yes
Dakota Wesleyan University RN-Up	Yes	Yes
Mount Marty College	Yes	Yes
National American University	Yes	Yes
Presentation BSN	Yes	Yes
South Dakota State University	Yes	Yes
University of Sioux Falls	Yes	Yes
University of South Dakota	Yes	Yes
University of South Dakota RN-BSN	Yes	Yes

### *Associate Program Options Offered*

Associate Program	Full-Time	Part-Time
Dakota Wesleyan University	Yes	Yes
Oglala Lakota College	Yes	No
Southeast Technical Institute RN	Yes	Yes
University of South Dakota	Yes	Yes

### *Practical Program Options Offered*

Practical Program	Full-Time	Part-Time
Lake Area Technical Institute	Yes	Yes
Mount Marty College PN	Yes	Yes
Sinte Gleska University	Yes	No
Sisseton Wahpeton College	Yes	Yes
Southeast Technical Institute PN	Yes	Yes
Western Dakota Technical	Yes	Yes

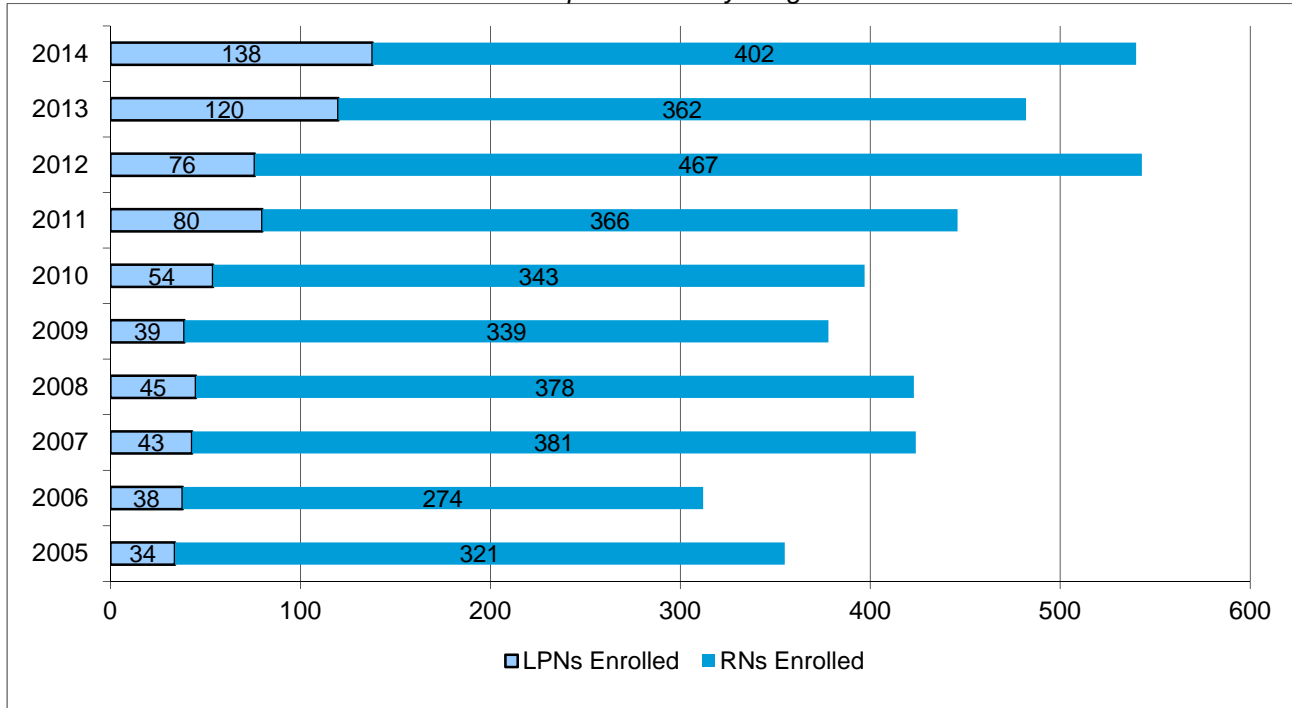
## Baccalaureate RN Upward Mobility

A total of 540 RN and LPN upward mobility students were enrolled in 2014 compared to 482 in 2013. Enrollment in baccalaureate upward mobility nursing education programs increased approximately 12% from 2013 to 2014.

*Associates RNs and LPNs Enrolled in RN Baccalaureate Upward Mobility Programs: 2014  
Included students at all points of the program's curriculum sequence*

Baccalaureate Degree Upward Mobility Education Programs	RNs Enrolled	LPNs Enrolled	Total Baccalaureate RN-UP Students
Dakota Wesleyan University	62	0	62
Mount Marty College	2	2	4
National American University	6	0	6
Presentation BSN	10	136	146
South Dakota State University	47	0	47
University of Sioux Falls	62	0	62
University of South Dakota	213	0	213
<b>RN Baccalaureate Upward Mobility Total</b>	<b>402</b>	<b>138</b>	<b>540</b>

*LPNs and RNs Enrolled in RN Baccalaureate Upward Mobility Programs: 2005-2014*



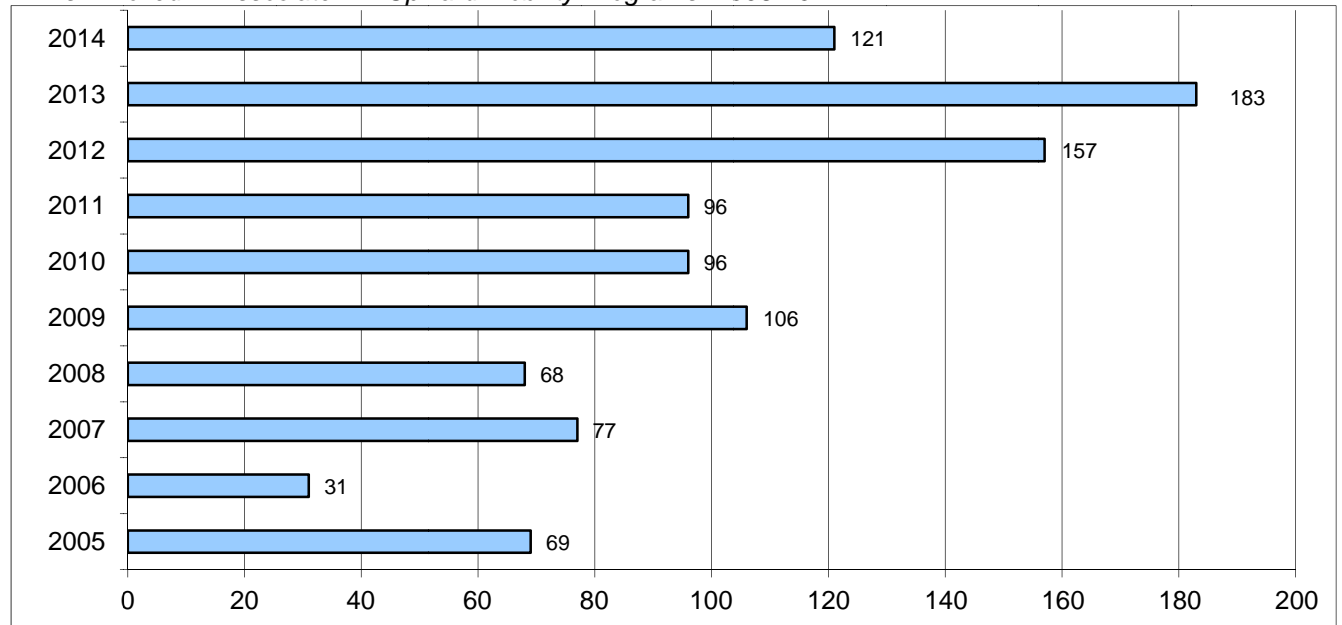
LPN to Associate RN Upward Mobility

LPN enrollment in associate upward mobility nursing education programs decreased by 34% from 2013 to 2014. A total of 183 students enrolled in 2013 compared to 121 in 2014, as depicted in the table and graph below.

*LPNs Enrolled in Associate RN Upward Mobility Programs: 2014*

Associate Degree Upward Mobility Programs	LPN Students Enrolled
Dakota Wesleyan University	17
Southeast Technical Institute	50
University of South Dakota	54
<b>PN to Associate RN Upward Mobility Total</b>	<b>121</b>

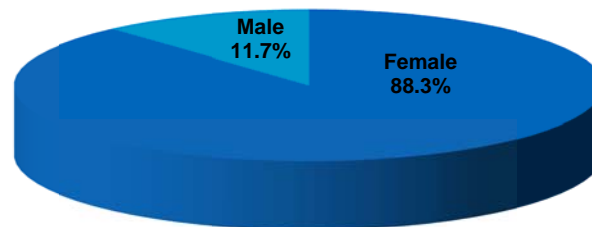
LPNs Enrolled in Associate RN Upward Mobility Programs: 2005-2014



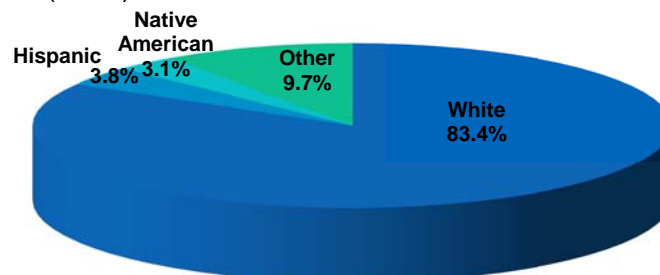
## Characteristics of Student Population

### Gender and Ethnicity of Enrolled Students

Consistent with previous years, the majority, over 88%, of RN and LPN students in 2014 was female; while males comprised nearly 12% of the population (RN upward mobility students were not included).



The ethnicity of enrolled students in 2014 remained predominately white, 83.4%. 16.6% of remaining students were of another ethnicity; Native American (3.1%), Black / African American (2.1%), Asian (1%), Hispanic (3.8%).





The following table presents gender and ethnic distribution of all enrolled students in 2014.

*Enrolled RN and LPN Student Gender and Ethnicity: 2014*

South Dakota Nursing Education Program	Total Student Enrollment	Gender		Primary Ethnic Origin						
		Female	Male	American Indian Alaska Native	Asian	Black / African American	Native Hawaiian Pacific Islander	White	Hispanic / Latino	Other / Unknown
Augustana College	106	95	11	1	1	2	0	102	0	0
Dakota Wesleyan University	111	105	6	1	1	2	0	105	2	0
Lake Area Technical Institute	112	108	4	2	0	1	0	108	1	0
Mount Marty College PN	10	8	2	0.5	0	1.5	0	6	2	0
Mount Marty College RN	91	81	10	0.5	0	1.5	0	85.5	3.5	0
National American University BSN	46	42	4	1	0	0	0	45	0	0
Oglala Lakota College	23	19	4	17	0	0	0	6	0	0
Presentation BSN	196	178	18	3	4	14	1	162	2	10
Sinte Gleska University	13	13	0	11	0	0	1	1	0	0
Sisseton Wahpeton College PN	11	11	0	7	0	0	0	4	0	0
Southeast Technical Institute PN	241	217	24	4	3	2	0	208	6	18
Southeast Technical Institute RN	50	44	6	1	0	0	0	47	1	1
South Dakota State University	739	626	113	11	9	19	1	632	65	2
University of Sioux Falls	130	106	24	0	1	5	0	121	1	2
University of South Dakota ADN	357	321	36	7	4	2	0	233	4	107
University of South Dakota BSN	62	50	12	3	0	0	0	47	0	12
Western Dakota Tech	47	46	1	3	0	0	0	43	1	0
<b>Total</b>	<b>2345</b>	<b>2070</b>	<b>275</b>	<b>73</b>	<b>23</b>	<b>50</b>	<b>3</b>	<b>1955.5</b>	<b>88.5</b>	<b>152</b>
Percent of Total Enrolled Students		88.3%	11.7%	3.1%	1.0%	2.1%	0.1%	83.4%	3.8%	6.5%

\*Excludes RN upward mobility programs.

### Age of Enrolled Nursing Students

#### Age of Students Enrolled in Baccalaureate Degree RN Programs (excluding RN Upward Mobility students)

The majority of baccalaureate degree nursing students in 2014 continue to fall within the categories 30 years of age or less, similar to findings in previous education reports.

Baccalaureate RN Program	17-20	21-25	26-30	31-40	41-50	51-60	61+	Unknown	Total Students
Augustana College	29	67	6	4	0	0	0	0	106
Mount Marty College RN	32	42	8	6	3	0	0	0	91
National American University	0	13	14	14	3	2	0	0	46
Presentation BSN	9	74	58	38	14	3	0	0	196
South Dakota State University	42	554	86	44	11	2	0	0	739
University of Sioux Falls	15	71	25	14	4	1	0	0	130
University of South Dakota	32	25	4	1	0	0	0	0	62
<b>Baccalaureate Total</b>	<b>159</b>	<b>846</b>	<b>201</b>	<b>121</b>	<b>35</b>	<b>8</b>	<b>0</b>	<b>0</b>	<b>1370</b>
Percent of Total	11.6%	61.8%	14.7%	8.8%	2.6%	0.6%	0%	0%	

\*Excludes RN upward mobility programs.

#### Age of Students Enrolled in Associate Degree RN Programs

The majority of associate degree nursing students in 2014 were 30 years of age or less.

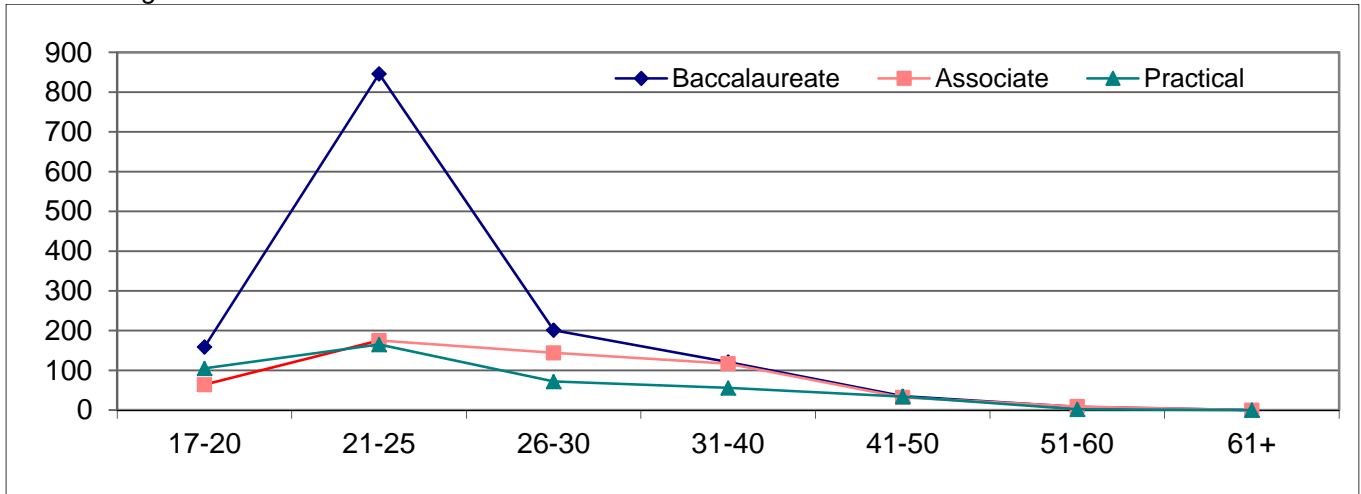
Associate Nursing Program	17-20	21-25	26-30	31-40	41-50	51-60	61+	Unknown	Total Students
Dakota Wesleyan University	35	33	26	14	1	2	0	0	111
Oglala Lakota College	0	8	5	6	4	0	0	0	23
Southeast Technical RN	0	13	19	15	3	0	0	0	50
University of South Dakota	29	121	94	82	24	7	0	0	357
<b>Associate Total</b>	<b>64</b>	<b>175</b>	<b>144</b>	<b>117</b>	<b>32</b>	<b>9</b>	<b>0</b>	<b>0</b>	<b>541</b>
Percent of Total	11.8%	32.4%	26.6%	21.6%	5.9%	1.7%	0%	0%	

Age of Students Enrolled in Practical Programs

Approximately three fourths of practical nursing students in 2014 were 30 years of age or less, similar to findings in previous education reports.

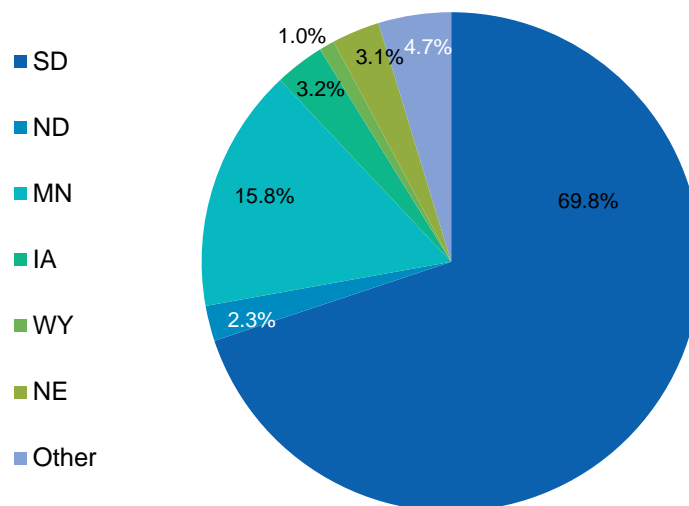
Practical Nursing Program	17-20	21-25	26-30	31-40	41-50	51-60	61+	Unknown	Total Students
Lake Area Technical	30	41	15	17	7	2	0	0	112
Mount Marty PN	3	1	1	2	3	0	0	0	10
Sinte Gleska University	1	6	2	2	2	0	0	0	13
Sisseton Wahpeton College	0	8	2	1	0	0	0	0	11
Southeast Technical PN	61	90	45	25	20	0	0	0	241
Western Dakota Technical	10	19	7	9	2	0	0	0	47
<b>Practical Nurse Total</b>	<b>105</b>	<b>165</b>	<b>72</b>	<b>56</b>	<b>34</b>	<b>2</b>	<b>0</b>	<b>0</b>	<b>434</b>
Percent of Total	24.2%	38.0%	16.6%	12.9%	7.8%	0.5%	0%	0%	

*Age of All Students Enrolled*



## State of Residence of Enrolled Nursing Students

### Enrolled Students State of Residence: 2014



### State of Residence of Enrolled Nursing Students by Nursing Program

Nursing Education Program	South Dakota		North Dakota		Minnesota		Iowa		Wyoming		Nebraska		Other	
	#	%	#	%	#	%	#	%	#	%	#	%	#	%
Augustana College = 106	49	46.2%	1	0.9%	37	34.9%	7	6.6%			7	6.6%	5	4.7%
Dakota Wesleyan = 111	103	92.8%			4	3.6%							4	3.6%
Lake Area Technical = 112	89	79.5%	7	6.3%	14	12.5%	1	0.9%					1	0.9%
Mount Marty College PN = 10	7	70.0%									3	30.0%		
Mount Marty College RN = 91	58	63.7%			3	3.3%	3	3.3%	1	1.1%	21	23.1%	5	5.5%
National American U = 46	43	93.5%			3	6.5%								
Oglala Lakota College = 23	12	52.2%									11	47.8%		
Presentation BSN = 196	56	28.6%	29	14.8%	106	54.1%			1	0.5%			4	2.0%
Sinte Gleska University = 13	12	92.3%									1	7.7%		
Sisseton Wahpeton PN = 11	10	90.9%	1	9.1%										
SD State University = 739	476	64.4%	11	1.5%	136	18.4%	35	4.7%	8	1.1%	19	2.6%	54	7.3%
Southeast Technical PN = 241	213	88.4%			17	7.1%	11	4.6%						
Southeast Technical RN = 50	46	92.0%			1	2.0%	3	6.0%						
University of Sioux Falls = 130	78	60.0%	2	1.5%	25	19.2%	6	4.6%	3	2.3%	4	3.1%	12	9.2%
University of SD ADN = 357	289	81.0%	3	0.8%	23	6.4%	5	1.4%	10	2.8%	3	0.8%	24	6.7%
University of SD BSN = 62	49	79.0%			2	3.2%	5	8.1%			4	6.5%	2	3.2%
Western Dakota Tech = 47	47	100%												
<b>Total Students = 2345</b>	<b>1637</b>	<b>69.8%</b>	<b>54</b>	<b>2.3%</b>	<b>371</b>	<b>15.8%</b>	<b>76</b>	<b>3.2%</b>	<b>23</b>	<b>1.0%</b>	<b>73</b>	<b>3.1%</b>	<b>111</b>	<b>4.7%</b>

\*Excludes RN Upward Mobility enrollment

## Nursing Education Curriculum

Nursing Education Program	Faculty: Student Ratio
Augustana College	1:8
Dakota Wesleyan University	1:8
Lake Area Technical Institute	1:4 – 1:8
Mount Marty College	1:6 – 1:8
National American University	1:6 – 1:8
Oglala Lakota College ADN	1:4 – 1:5
Presentation BSN	1:6 – 1:8
Sinte Gleska University	1:8
Sisseton Wahpeton College PN	1:7
South Dakota State University	1:8 – 1:9 with permission
Southeast Technical Institute	1:8
University of Sioux Falls	1.4 – 1:8
University of South Dakota ADN & BSN	1:8
Western Dakota Technical	1:8 or better

Nursing Education Program	Non-Nursing Credit Hours	Nursing Theory Credit Hours	Nursing Clinical Credit Hours	Total Credit Hours to Graduate
Augustana College	76	48		124
Mount Marty College PN	21	17	15	53
Mount Marty College BSN	71	35	22	128
Presentation BSN	71	35	21	127
South Dakota State University	61	59		120
University of Sioux Falls	61	49	14	124
Dakota Wesleyan U Associate RN	31	27.5	12.5	71
Dakota Wesleyan University PN-RN	30	17.5	5.75 Clinical 1.75 Seminar	55 + 16 from LPN = 71
National American University	79.5	79	28	186.5 qtr credits 124.3 sem credits
Oglala Lakota College	30	43		73
University of South Dakota ADN	30	19	16	65
Lake Area Technical Institute	14.5	34 (11.5 clinical)		48.5
Sinte Gleska University	30	22	12 + 6 hour preceptor	70
Sisseton Wahpeton College PN	29	11	20	60
Southeast Technical Institute PN	18	30		48
Southeast Technical Institute PN-AAS	18	24		42
Western Dakota Technical	30	24	18	72
University of South Dakota BSN	62	16	42	120

## Nursing Graduates

### Number of Registered Nurse Graduates

In 2014, baccalaureate nursing education programs had 487 graduates, a 2% increase from 2013. Associate degree programs had 344 graduates in 2014, a 10% decrease from 2013.

#### *Baccalaureate Degree Graduates: October 1, 2013 - September 30, 2014*

Baccalaureate Degree Nursing Program	Generic BSN Graduates	LPN-BSN Upward Mobility Students	Generic + LPN-BSN Upward Mobility	% of Graduates Prepared From Program	RN Upward Mobility Graduates	Total Baccalaureate Graduates
Augustana College	45	0	45	9.2%	0	45
Dakota Wesleyan University	0	0	0	0%	10	10
Mount Marty College RN	30	1	31	6.4%	2	33
National American University	17	0	17	3.5%	4	21
Presentation BSN	18	42	60	12.3%	6	66
South Dakota State University	276	0	276	56.7%	47	323
University of Sioux Falls	58	0	58	11.9%	18	76
University of South Dakota	0	0	0	0%	94	94
<b>Baccalaureate Total</b>	<b>444</b>	<b>43</b>	<b>487</b>		<b>181</b>	<b>668</b>

#### *Associate Degree Graduates: October 1, 2013 - September 30, 2014*

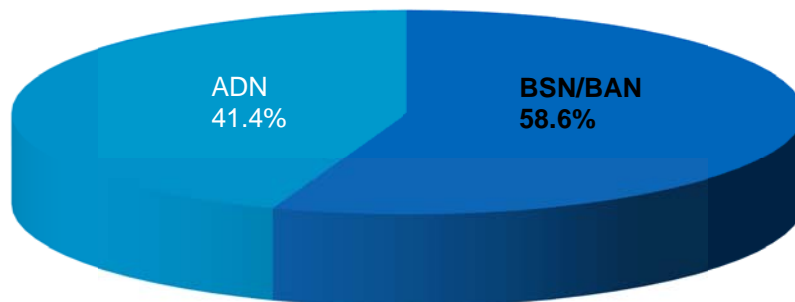
Associate Degree Nursing Program	Generic ADN Students	LPN-ADN Upward Mobility Students	Total ADN Graduates	% of Graduates Prepared
Dakota Wesleyan University	31	16	47	13.7%
Oglala Lakota College	6	0	6	1.7%
Presentation ADN	1	0	1	0.3%
Southeast Technical Institute	0	24	24	7.0%
University of South Dakota	205	61	266	77.3%
<b>Associate Total</b>	<b>243</b>	<b>101</b>	<b>344</b>	

#### *Total Number of Baccalaureate and Associate Registered Nurse Graduates – 2014*

Total Registered Nurse Graduates	Generic Students	LPN Upward Mobility Students	Total Graduates	% of Total Graduates Prepared
Baccalaureate Degree	444	43	487	58.6%
Associate Degree	243	101	344	41.4%
<b>Total</b>	<b>687</b>	<b>144</b>	<b>831</b>	

*(Total number of graduates in 2013 was 861; 478 were baccalaureate and 383 were associate.)*

*Percentage of Associate and Baccalaureate Graduates Produced: 2014*



## Number of Practical Nurse Graduates

Practical nurse programs graduated 200 students in 2014, three more students than in 2013.

### *Practical Nurse Graduates: October 1, 2013 - September 30, 2014*

Practical Nursing Program	Total Graduates	% of PNs Prepared
Lake Area Technical	60	30.0%
Mount Marty College PN	6	3.0%
Sinte Gleska University	5	2.5%
Sisseton Wahpeton	11	5.5%
Southeast Technical PN	87	43.5%
Western Dakota Technical	31	15.5%
<b>Practical Nursing Total</b>	<b>200</b>	

## Characteristics of Nursing Graduates

### *Age of Baccalaureate Degree Graduates*

The majority, 82.4%, of baccalaureate degree nursing graduates in 2014 continue to be 30 years of age or less, similar to findings in previous education reports.

### *October 1, 2013 – September 30, 2014*

Baccalaureate Graduates by Age Category	17-20	21-25	26-30	31-40	41-50	51-60	61+	Total
Augustana College	0	45	0	0	0	0	0	45
Mount Marty College RN	0	21	4	5	1	0	0	31
National American University	0	3	4	8	1	1	0	17
Presentation College BSN	0	17	19	15	7	2	0	60
South Dakota State University	0	194	45	30	5	2	0	276
University of Sioux Falls	0	34	15	6	3	0	0	58
<b>Baccalaureate Total</b>	<b>0</b>	<b>314</b>	<b>87</b>	<b>64</b>	<b>17</b>	<b>5</b>	<b>0</b>	<b>487</b>
Percent of Total	0%	64.5%	17.9%	13.1%	3.5%	1.0%	0%	

*\*Excludes RN upward mobility enrollment*

### *Age of Associate Degree Graduates*

The majority, 68.9%, of associate degree graduates in 2014 were 30 years of age or less, similar to findings in previous education reports.

### *October 1, 2013 – September 30, 2014*

Associate Graduates by Age Category	17-20	21-25	26-30	31-40	41-50	51-60	61+	Total
Dakota Wesleyan University	4	17	17	9	0	0	0	47
Oglala Lakota College	0	5	0	0	1	0	0	6
Presentation College	0	0	0	0	0	1	0	1
Southeast Technical Institute	0	6	9	8	1	0	0	24
University of South Dakota	7	99	73	65	17	4	1	266
<b>Associate Total</b>	<b>11</b>	<b>127</b>	<b>99</b>	<b>82</b>	<b>19</b>	<b>5</b>	<b>1</b>	<b>344</b>
Percent of Total	3.2%	36.9%	28.8%	23.8%	5.5%	1.5%	0.3%	

### Age of Practical Nursing Graduates

The majority, 73.5%, of practical degree nursing graduates in 2014 continue to be 30 years of age or less, similar to findings in previous education reports.

October 1, 2013 – September 30, 2014

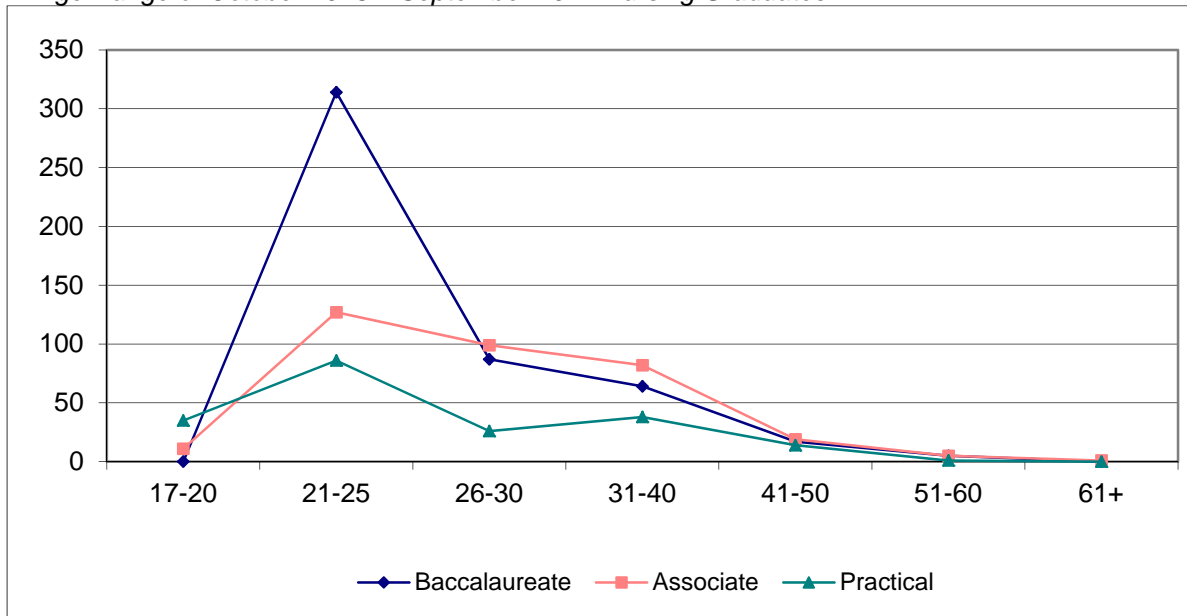
Practical Program Graduates by Age Range	17-20	21-25	26-30	31-40	41-50	51-60	61+	Total
Lake Area Technical	19	23	5	10	3	0	0	60
Mount Marty PN	1	1	1	2	1	0	0	6
Sinte Gleska University	0	2	0	2	1	0	0	5
Sisseton Wahpeton College	0	8	2	1	0	0	0	11
Southeast Technical	14	39	12	13	8	1	0	87
Western Dakota Technical	1	13	6	10	1	0	0	31
<b>Practical Nurse Total</b>	<b>35</b>	<b>86</b>	<b>26</b>	<b>38</b>	<b>14</b>	<b>1</b>	<b>0</b>	<b>200</b>
Percent of Total	17.5%	43.0%	13.0%	19.0%	7.0%	0.5%	0%	

### Age of All Nursing Program Graduates

October 1, 2013 – September 30, 2014

Nursing Program Graduates by Age Range	17-20	21-25	26-30	31-40	41-50	51-60	61+	Total
Baccalaureate	0	314	87	64	17	5	0	487
Associate	11	127	99	82	19	5	1	344
Practical	35	86	26	38	14	1	0	200
<b>Nursing Programs Total</b>	<b>46</b>	<b>527</b>	<b>212</b>	<b>184</b>	<b>50</b>	<b>11</b>	<b>1</b>	<b>1031</b>
Percent of Total	4.5%	51.1%	20.6%	17.8%	4.9%	1.1%	>0.1%	

### Age Range of October 2013 – September 2014 Nursing Graduates



## Baccalaureate and Associate Degree NCLEX–RN® Results

First-time NCLEX–RN® candidates (test writers) in South Dakota's baccalaureate and associate degree programs are displayed in the tables below for the period of January 1 through December 31, 2014. South Dakota's pass rate for both baccalaureate and associate degree programs was 84.6%; the national pass rate was 82%.

### Baccalaureate Degree NCLEX- RN® Results: January 1, 2014 —December 31, 2014

Baccalaureate Nursing Program	Total Passed	Total Test Writers	Percent Passed
Augustana College	43	44	99%
Mount Marty College	22	28	79%
National American University	7	16	44%
Presentation College	41	48	85%
South Dakota State University	240	275	87%
University of Sioux Falls	52	58	90%
<b>Total</b>	<b>405</b>	<b>469</b>	<b>86%</b>

### Baccalaureate Degree NCLEX–RN® Pass Rates: 2005–2014

Nursing Program	2005	2006	2007	2008	2009	2010	2011	2012	2013	2014
Augustana College	90.5%	85.5%	83.9%	86.8%	96.2%	100%	89.1%	97.92%	100%	99%
Mount Marty College	84.0%	76.7%	81.3%	89.7%	90.9%	87.5%	72.0%	85%	56.6%	79%
National American U	-	-	-	-	-	-	-	-	81.8%	44%
Presentation BSN	87.5%	92.0%	63.6%	69.0%	93.2%	85.2%	94.4%	100%	89.7%	85%
South Dakota State	84.9%	84.2%	91.6%	93.3%	92.9%	90.8%	93.6%	94.31%	92.5%	87%
University of Sioux Falls	-	-	-	-	-	-	94.7%	81.08%	79.3%	90%
University of SD (first graduates May 2015)	-	-	-	-	-	-	-	-	-	NA

### Associate Degree NCLEX- RN® Results: January 1, 2014 —December 31, 2014

Associate Nursing Program	Total Passed	Total Test Writers	Percent Passed
Dakota Wesleyan University	37	47	79%
Oglala Lakota College	6	8	75%
Presentation	1	2	50%
Sisseton Wahpeton College	0	2	0
Southeast Technical Institute	16	20	80%
University of South Dakota	225	267	84%
<b>Total</b>	<b>285</b>	<b>346</b>	<b>82%</b>

### Associate Degree NCLEX–RN® Pass Rates: 2005–2014

Nursing Program	2005	2006	2007	2008	2009	2010	2011	2012	2013	2014
Dakota Wesleyan University	93.1%	84.9%	80.7%	90.5%	88.3%	85.3%	91.0%	83.02%	72.9%	79%
Oglala Lakota College ADN	81.8%	45.5%	85.2%	88.9%	100%	71.4%	63.6%	85.71%	63.6%	75%
Presentation College ADN	33.3%	100%	72.7%	100%	100%	100%	82.3%	84.62%	100%	50%
Sisseton Wahpeton RN	-	-	100%	62.5%	66.7%	30.0%	50.0%	68.42%	22.2%	0
University of South Dakota	88.3%	83.8%	75.1%	90.1%	86.7%	85.1%	88.2%	88.28%	78.2%	84%
Southeast Technical Institute	-	-	-	-	-	-	-	100%	92.5%	80%



## Practical Nurse Graduate NCLEX–PN® Results

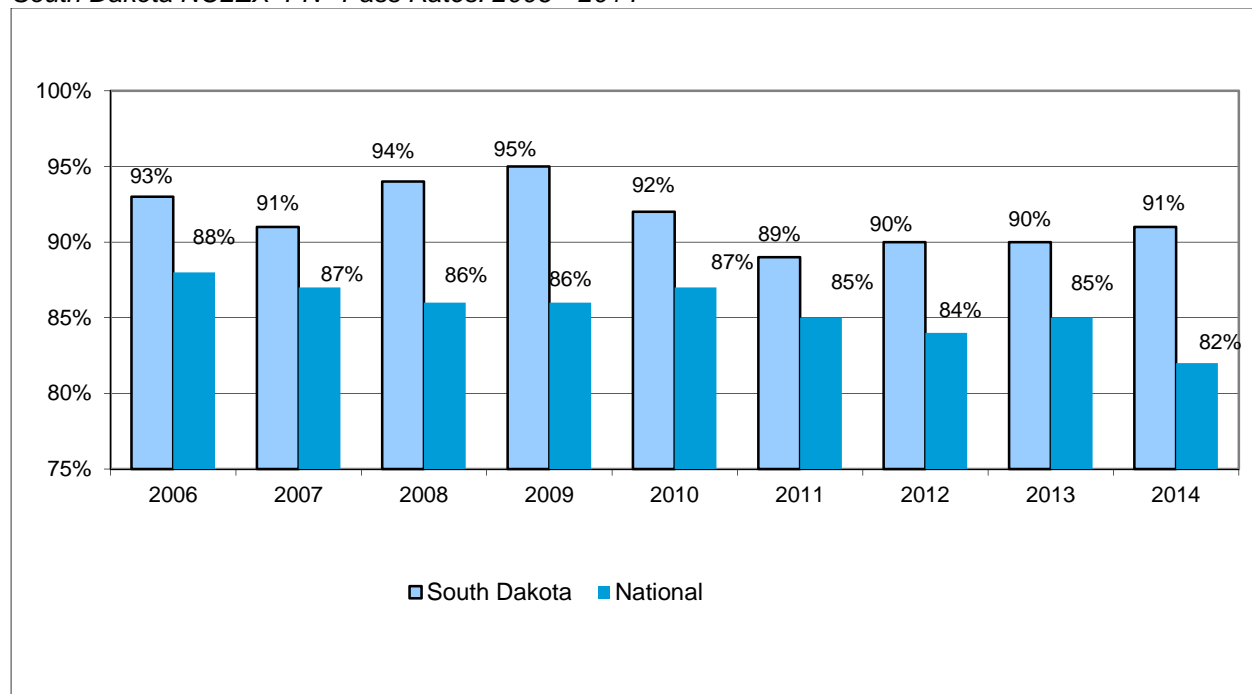
South Dakota's first-time NCLEX-PN test writers for the period from January 1, 2014 through December 31, 2014 are displayed in the table below. South Dakota's pass rate for all first-time test writers in this time period was 91%; the national pass rate was 82%.

Of note: the PN passing standard increased in 2014.

### Practical Program NCLEX- PN® Results: January 1, 2014—December 31, 2014

Practical Nursing Program	Total Passed	Total Test Writers	Percent Passed
LPN by Equivalency	2	2	100%
Lake Area Technical	59	63	94%
Mount Marty College PN	3	5	60%
Sinte Gleska University	1	2	50%
Southeast Technical PN	99	100	99%
Sisseton Wahpeton	6	10	60%
Western Dakota Technical	23	29	79%
<b>Total</b>	<b>193</b>	<b>211</b>	<b>91%</b>

### South Dakota NCLEX–PN® Pass Rates: 2006—2014



## Graduates Licensed as RNs in South Dakota

October 2013–September 2014

Baccalaureate and Associate Registered Nurse Programs	Total Graduates	Total Licensed in South Dakota	
Augustana College	45	35	78%
Dakota Wesleyan University	47	34	72%
Mount Marty College RN	31	14	45%
National American University	17	6	35%
Oglala Lakota College	6	0	0%
Presentation College ADN	1	1	100%
Presentation College BSN	60	9	15%
South Dakota State University	276	209	76%
Southeast Technical Institute	24	16	66%
University of Sioux Falls	58	46	79%
University of South Dakota ADN	266	206	77%
<b>Registered Nurse Total</b>	<b>831</b>	<b>576</b>	<b>69%</b>

*\*Excludes RN upward mobility graduates*

*\*First time candidates who graduated prior to end of reporting period (as reported by programs).*

*Because there may be lag time from graduation, to when a candidate tests/passes, these numbers represent only what occurred during the reporting period i.e. total number of graduates in that time frame, and total number of candidates licensed in SD during that same time frame.*

## Graduates Licensed as LPNs in South Dakota

October 2013–September 2014

Practical Nurse Programs	Total Graduates	Total Licensed in South Dakota	
Lake Area Technical Institute	60	51	85%
Mount Marty College PN	6	4	66%
Sinte Gleska University	5	1	20%
Sisseton Wahpeton College	11	6	55%
Southeast Technical Institute PN	87	79	91%
Western Dakota Technical Institute	31	17	55%
<b>Practical Nurse Total</b>	<b>200</b>	<b>158</b>	<b>79%</b>

*\*First time candidates who graduated prior to end of reporting period and eventually tested.*

*Because there may be lag time from graduation, to when a candidate tests/passes, these numbers represent only what occurred during the reporting period i.e. total number of graduates in that time frame, and total number of candidates licensed in SD during that same time frame.*

## Nursing Education Faculty

### Employment Status

Faculty counted as full-time were those included as instructional, administrative, or research staff of the nursing program who were employed full-time as defined by the institution, held academic rank, carried the full scope of faculty responsibility (e.g., teaching, advisement, committee work), and received the rights and privileges associated with full-time employment.

Part-time faculty were those members of the instructional, administrative, or research staff of the nursing academic unit who are employed part-time as defined by the institution, may or may not hold academic rank, carry responsibility for a specific area (e.g., teaching a single course), and may carry any number of titles (e.g., adjunct, clinical instructor).

Also included were administrative, LOA/Sabbatical, and persons employed to teach nursing theory, clinical practice, and/or lab. Those not included were substitute teachers, guest lecturers, or faculty for graduate programs.

### *Baccalaureate and Associate Degree RN Faculty: 2014*

Nursing Program	2014 Full Time	2014 Part Time		2014 *LOA / Sabbatical	Faculty Total		FTE 2013	Change 2013-2014
		#	FTE		# 2014	FTE 2014		
Augustana College	9	15	2.97	0	24	11.97	^8.4	+3.57
Dakota Wesleyan University	12	12	3.04	0	24	15.04	13.86	+1.18
Mount Marty College RN	7	12	3.72	0	19	10.72	11.05	-0.33
National American BSN	6	7	3.5	0	13	9.5	12	-2.5
Oglala Lakota College	5	1	0.25	0	6	5.25	5.5	-0.25
Presentation College	9	11	4.223	0	20	13.223	12.41	+0.813
~Sisseton Wahpeton ADN	0	0	0	0	0	0	1.8	-1.8
South Dakota State University	57	117	24.21	0	174	81.21	75.34	+5.87
Southeast Technical RN	2	2	1	0	4	3	3.2	-0.2
University of Sioux Falls	6	37	5.836	0	43	11.836	14.618	-2.782
University of South Dakota	37	37	6.85	0	74	43.85	48.89	-5.04
<b>Total</b>	<b>150</b>	<b>251</b>	<b>55.599</b>	<b>0</b>	<b>401</b>	<b>205.599</b>	<b>207.068</b>	<b>-1.469</b>

\*Faculty on LOA / Sabbatical are not included in FY totals

~ Sisseton Wahpeton College ADN program was not operational in 2014

^ Augustana adjunct faculty were not included in the 2013 report

### *Practical Program Faculty: 2014*

Nursing Program	2014 Full Time	2014 Part Time		2014 *LOA / Sabbatical	Faculty Total		FTE 2013	Change 2013-2014
		#	FTE		# 2014	FTE 2014		
Lake Area Technical	8	1	0.3	0	9	8.3	8.7	-0.4
Mount Marty College PN	1	5	0.63	0	6	1.63	2.12	-0.49
Sinte Gleska University	4	1	0.5	0	5	4.5	4.5	~
~Sisseton Wahpeton PN	2	2	1.2	0	4	3.2	0	+3.2
Southeast Technical PN	10	8	3.6	0	18	13.6	12.3	+1.3
Western Dakota Technical	5	7	.53	0	12	5.53	5.43	+0.1
<b>Total</b>	<b>30</b>	<b>24</b>	<b>6.76</b>	<b>0</b>	<b>54</b>	<b>36.76</b>	<b>33.05</b>	<b>+3.71</b>

\*Faculty on LOA / Sabbatical are not included in FY totals

~ Sisseton Wahpeton College PN program was not operational in 2013

### Faculty Vacancies

Baccalaureate and Associate RN Nursing Programs	RN Faculty Vacancies	Practical Nursing Programs	PN Faculty Vacancies
Augustana College	2	Lake Area Technical	0
Dakota Wesleyan University	0	Mount Marty College PN	0
Mount Marty College RN	0	Sinte Gleska University	0
National American University	0	Sisseton Wahpeton	1
Oglala Lakota College	0	Southeast Technical	0
Presentation College	0	Western Dakota Technical	1
South Dakota State University	4		
Southeast Technical RN	0		
University of Sioux Falls	1		
University of South Dakota	0		
<b>Total RN Program Vacancies</b>	<b>7</b>	<b>Total PN Program Vacancies</b>	<b>2</b>

### Faculty Characteristics

#### Gender and Ethnicity

The majority of faculty members teaching in South Dakota's baccalaureate, associate, and practical nursing programs are white females, as presented in the table below.

#### Nursing Faculty Gender and Ethnicity: 2014

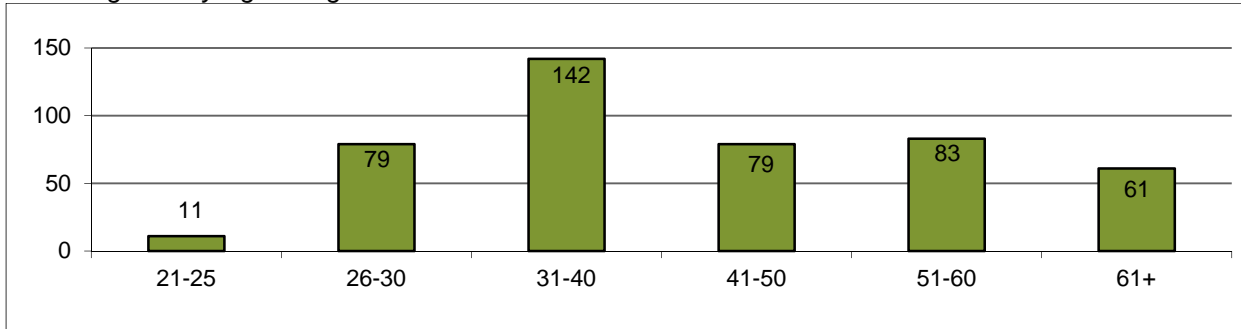
Nursing Education Program	Gender		Ethnicity							Total Faculty
	Female	Male	American Indian Alaska Native	Asian	Black African American	Native Hawaiian Pacific Islander	White	Hispanic / Latino	Other / Unknown	
Augustana College	23	1	1	0	0	0	23	0	0	24
Dakota Wesleyan University	24	0	0	0	0	0	24	0	0	24
Lake Area Technical	9	0	0	0	0	0	9	0	0	9
*Mount Marty College PN	5	1	0	0	0	0	5	1	0	6
*Mount Marty College RN	17	2	0	0	0	0	18	1	0	19
National American University	12	1	0	0	1	0	12	0	0	13
Oglala Lakota College	6	0	0	0	0	0	6	0	0	6
Presentation College	20	0	0	0	0	0	20	0	0	20
Sinte Gleska University	5	0	0	0	0	0	5	0	0	5
Sisseton Wahpeton	4	0	2	0	0	0	2	0	0	4
*Southeast Technical PN	17	1	0	0	0	0	18	0	0	18
*Southeast Technical RN	4	0	0	0	0	0	4	0	0	4
South Dakota State University	165	9	1	1	0	0	170	1	1	174
University of Sioux Falls	40	3	0	0	0	0	43	0	0	43
University of South Dakota	72	2	0	0	0	0	74	0	0	74
Western Dakota Technical	10	2	2	0	0	0.5	9.5	0	0	12
<b>Total</b>	<b>433</b>	<b>22</b>	<b>6</b>	<b>1</b>	<b>1</b>	<b>0.5</b>	<b>442.5</b>	<b>3</b>	<b>1</b>	<b>455</b>
<b>Percent of Total</b>	<b>95.2%</b>	<b>4.8%</b>	<b>1.3%</b>	<b>0.2%</b>	<b>0.2%</b>	<b>0.1%</b>	<b>97.3%</b>	<b>0.7%</b>	<b>0.2%</b>	

\* Faculty members who teach in both PN and RN programs are counted separately for each program.

**Age**

10.5% of all nursing faculty in South Dakota hold a doctoral degree (up from 10% in 2013). Of that group, approximately 81% were 51 years and older. Additionally, data revealed 13.4% of all nursing faculty were 61 years and older.

*Nursing Faculty Age Range: 2014*

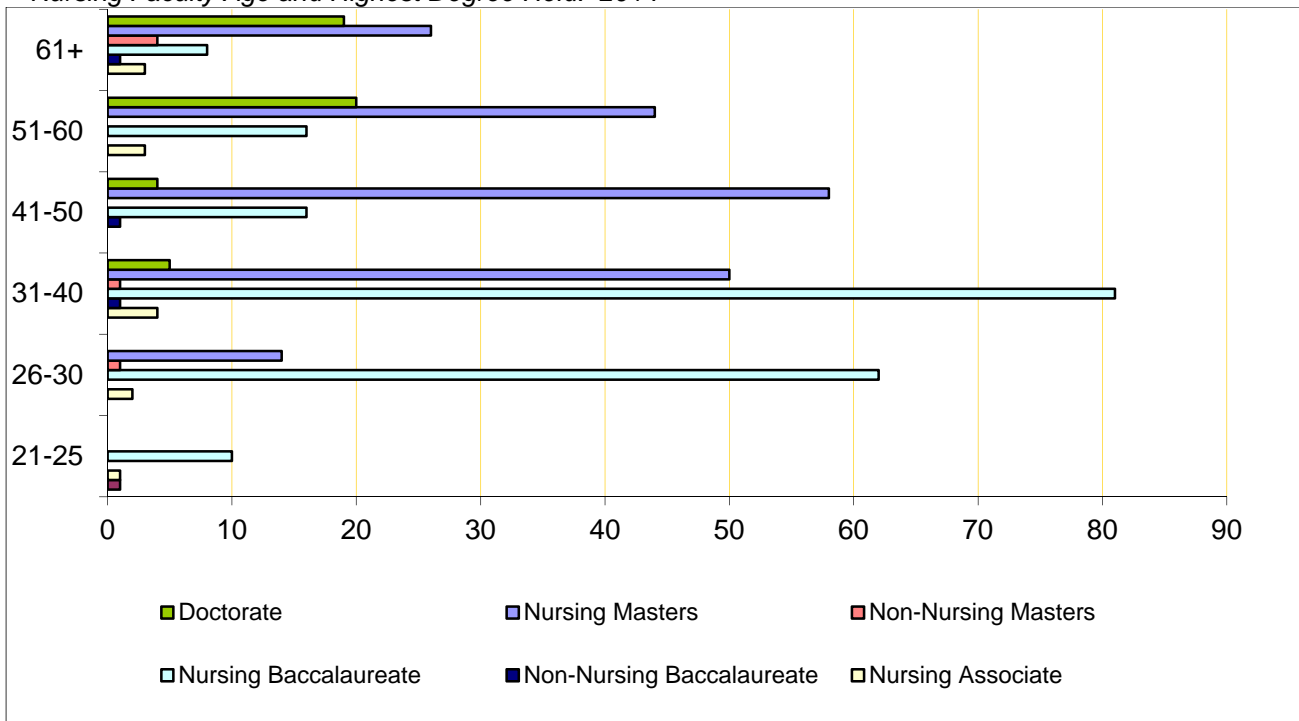


*\*Nursing Faculty Age and Highest Degree Held: 2014*

Age Range	21-25	26-30	31-40	41-50	51-60	61+	Total
Doctorate	0	0	5	4	20	19	48
Nursing Masters	0	14	50	58	44	26	192
Non-Nursing Masters	0	1	1	0	0	4	6
Nursing Baccalaureate	10	62	81	16	16	8	193
Non-Nursing Baccalaureate	0	0	1	1	0	1	3
Nursing Associates	1	2	4	0	3	3	13
Nursing Diploma	0	0	0	0	0	0	0
<b>Total</b>	<b>11</b>	<b>79</b>	<b>142</b>	<b>79</b>	<b>83</b>	<b>61</b>	<b>455</b>
<b>Percent of Total</b>	<b>2.4%</b>	<b>17.4%</b>	<b>31.2%</b>	<b>17.4%</b>	<b>18.2%</b>	<b>13.4%</b>	

\*Includes Administrators

*Nursing Faculty Age and Highest Degree Held: 2014*



## Highest Degree Held by Program Type

42% of associate and baccalaureate program faculty members' reported their highest degree held in nursing as a baccalaureate degree in nursing; 44% held a master's degree in nursing; and 12% held a doctorate degree.

### Highest Degree Held by Baccalaureate and Associate Faculty: 2014

Baccalaureate and Associate Nursing Education Programs	Highest Nursing Degree Held by Program Administrator	Doctorate Degree	Masters Degree in Nursing	Non-Nursing Masters Degree	Baccalaureate Degree in Nursing	Non-Nursing Baccalaureate	Associate Degree in Nursing	Diploma RN	Total
Augustana College	EdD	6	8	1	8	1	0	0	24
Dakota Wesleyan University	MS	1	19	1	3	0	0	0	24
Mount Marty College RN	PhD	2	7	0	10	0	0	0	19
National American University BSN	PhD	1	8	0	3	1	0	0	13
Oglala Lakota College	MSN	0	6	0	0	0	0	0	6
Presentation College	EdD	1	15	1	3	0	0	0	20
South Dakota State University	PhD	24	50	0	98	0	2	0	174
Southeast Technical RN	MSN	0	4	0	0	0	0	0	4
University of Sioux Falls	DNP	2	7	1	33	0	0	0	43
University of South Dakota	EdD	11	53	0	10	0	0	0	74
<b>Baccalaureate and Associate Degree Totals</b>		<b>48</b>	<b>177</b>	<b>4</b>	<b>168</b>	<b>2</b>	<b>2</b>	<b>0</b>	<b>401</b>
<b>Percent</b>		<b>12.0%</b>	<b>44.1%</b>	<b>1.0%</b>	<b>41.9%</b>	<b>0.5%</b>	<b>.05%</b>	<b>0%</b>	

Fourteen (26%) practical nursing faculty members held a master's degree in nursing; 46.3% held a baccalaureate degree in nursing, and 20.4% held an associate degree in nursing.

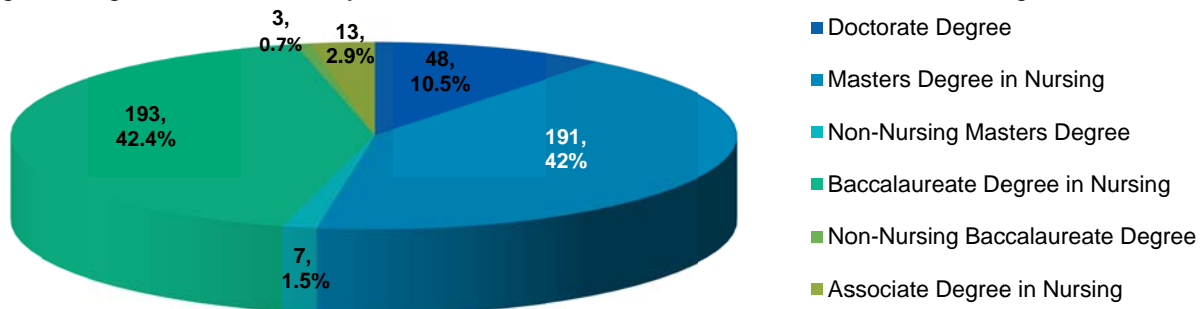
### Highest Degree Held by Practical Program Faculty: 2014

Practical Nursing Programs	Highest Nursing Degree Held by Program Administrator	Doctorate Degree	Masters Degree in Nursing	Non-Nursing Masters Degree	Baccalaureate Degree in Nursing	Non-Nursing Baccalaureate	Associate Degree in Nursing	Diploma RN	Total
Lake Area Technical	MS	0	5	0	4	0	0	0	9
Mount Marty College PN	PhD	0	3	0	3	0	0	0	6
Sinte Gleska University	MSN	0	2	0	2	0	1	0	5
Sisseton Wahpeton College	MSN	0	1	0	2	0	1	0	4
Southeast Technical Institute	MSN	0	3	1	8	0	6	0	18
Western Dakota Technical	MS	0	0	2	6	1	3	0	12
<b>Practical Program Totals</b>		<b>0</b>	<b>14</b>	<b>3</b>	<b>25</b>	<b>1</b>	<b>11</b>	<b>0</b>	<b>54</b>
<b>Percent</b>		<b>0%</b>	<b>25.9%</b>	<b>5.6%</b>	<b>46.3%</b>	<b>1.9%</b>	<b>20.4%</b>	<b>0%</b>	

### Highest Degree Held by All Program Faculty: 2014

All South Dakota Nursing Education Programs 2014	Doctorate Degree	Masters Degree in Nursing	Non-Nursing Masters Degree	Baccalaureate Degree in Nursing	Non-Nursing Baccalaureate	Associate Degree in Nursing	Diploma RN	Total
Baccalaureate + Associate	48	177	4	168	2	2	0	401
Practical Programs	0	14	3	25	1	11	0	54
<b>Total</b>	<b>48</b>	<b>191</b>	<b>7</b>	<b>193</b>	<b>3</b>	<b>13</b>	<b>0</b>	<b>455</b>
<b>Percent of Total</b>	<b>10.5%</b>	<b>42.0%</b>	<b>1.5%</b>	<b>42.4%</b>	<b>0.7%</b>	<b>2.9%</b>	<b>0%</b>	

Highest Degree Held, All Faculty Members: Baccalaureate, Associate, and Practical Programs: 2014



Faculty Enrolled in Education Programs Leading to an Advanced Degree: 2014

*RN Baccalaureate and Associate Program Faculty*

Nursing Education Program	Doctorate			Nursing MS	Nursing BA/BS	Total
	DNP	EdD	PhD			
Augustana College	0	0	1	0	0	1
Dakota Wesleyan University	2	1	1	0	0	4
*Mount Marty College RN	1	0	0	4	0	5
National American University	1	1	1	0	0	3
Oglala Lakota College	0	0	0	0	0	0
Presentation College	0	0	1	3	0	4
South Dakota State University	0	0	10	5	1	16
Southeast Technical RN	0	0	0	1	0	1
University of Sioux Falls	3	0	1	2	0	6
University of South Dakota	1	2	5	1	0	9
<b>RN Programs Total</b>	<b>8</b>	<b>4</b>	<b>20</b>	<b>16</b>	<b>1</b>	<b>49</b>
<b>Doctorate Total = 32</b>						

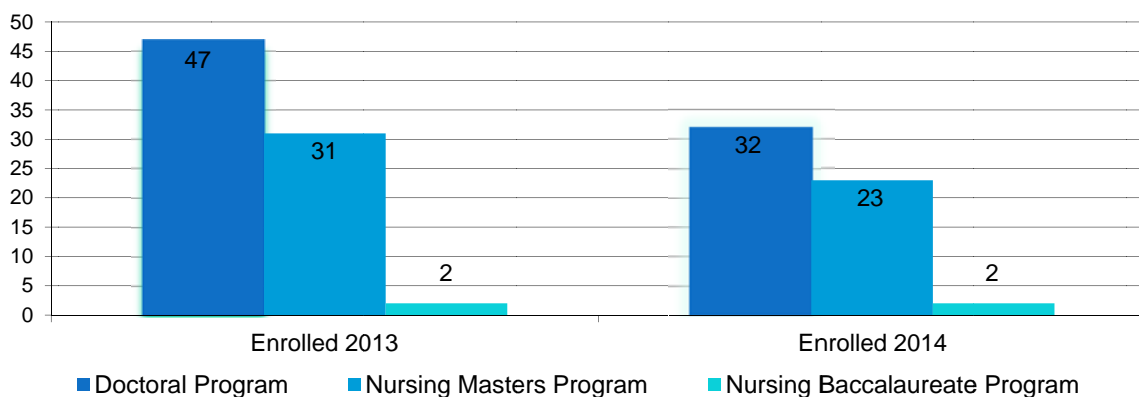
\* Faculty enrolled in education programs leading to a higher degree who are employed within both the same school's PN and RN education programs are counted within that school's RN education program data.

*Practical Program Faculty*

Nursing Education Program	Doctorate			Nursing MS	Nursing BA/BS	Total
	DNP	EdD	PhD			
Lake Area Technical Institute	0	0	0	3	0	3
*Mount Marty College PN	0	0	0	0	0	0
Sinte Gleska University	0	0	0	1	0	1
Sisseton Wahpeton College	0	0	0	0	0	0
*Southeast Technical Institute	0	0	0	2	1	3
Western Dakota Technical	0	0	0	1	0	1
<b>PN Programs Total</b>	<b>0</b>	<b>0</b>	<b>0</b>	<b>7</b>	<b>1</b>	<b>8</b>
<b>Doctoral Total = 0</b>						

\* Faculty enrolled in education programs leading to a higher degree who are employed by both the same school's PN and RN education programs are included within that school's RN education program data.

Total Faculty Enrolled in Education Leading to an Advanced Degree: 2013 – 2014



---

## Historical Notes

### 1980 – 1989:

- 1981: Huron Nursing College began as an AD Program.
- Fall 1985: These Practical Nursing Programs did not accept applications for admission Fall 1985: Southeast Area Vocational Technical Institute, Mitchell Vocational Technical School of Practical Nursing, and Pierre School of Practical Nursing.
- May 1986: Sioux Valley Hospital School of Nursing graduated its last class.
- Fall 1986: These Practical Nursing Programs did not accept applications for admission Fall 1986: Western Dakota Tech Vocational Technical and Freeman Junior College.
- Fall 1988: Presentation College received Interim approval for the Baccalaureate Program. The first class of students was admitted in Fall 1988.
- June 1989: Dakota Wesleyan University graduated its last class of students in the Rapid City LPN Upward Mobility Program.
- Fall 1989: Western Dakota Tech LPN program approved.
- 1989: The western part of the state has diploma, associate, and baccalaureate degree programs preparing students for RN licensure, and one program preparing students for LPN licensure.
- Fall 1989: South Dakota State University began admitting students to its Satellite Generic Program, Rapid City.
- Fall 1989: The University of South Dakota began admitting students to their Satellite Upward Mobility Programs in Watertown and Pierre. The program in Watertown serves as a 1+1 Program, with Lake Area Technical Institute offering the first year and University of South Dakota the second. The University of South Dakota began admitting students to their Satellite Generic Program in Rapid City.

### 1990 – 1999:

- Spring 1990: Presentation College discontinued the ADN Program. They offer a Baccalaureate Program with an ADN Exit Option.
- Spring 1991: The University of South Dakota admitted students to their Satellite Generic Program in Pierre.
- May 1991: Rapid City Regional Hospital School of Nursing graduated its last class.
- November 1991: Sisseton Wahpeton College Community College received Interim Approval for their ADN Program, with the first class to be admitted February 1992.
- 1992: Presentation is classified as Associate Degree only; 100% of admissions exit at the AD level.
- 1993: Presentation College Associate Degree Program has Full Approval from South Dakota Board of Nursing. The Generic BSN Program has Interim Approval Status with no students enrolled at this time. NLN accreditation was received for an RN completion program. There are currently 23 students (17 FT and 6 PT) enrolled. These students are not included in the 1993 Statistical Report.
- 1994: Presentation College offers the Associate Degree at the Eagle Butte campus only. The BSN Program is offered at the main campus, with 66 students enrolled.
- Fall 1995: Augustana College implemented a Masters Program in Nursing and admitted students.
- 1996: Mount Marty College discontinued the Watertown campus Career Mobility Program.
- 1997: Huron University admitted ten students to a BSN Completion Program. The Program has Probationary Approval Status.
- 1997: Presentation College received Board approval for reorganization of the BSN Program to include a satellite at North Dakota State School of Science in Wahpeton, South Dakota.
- 1998: Huron University received Interim Approval Status for the BSN Completion Program.
- 1999: Presentation College offered the BSN Completion Program at Queen of Peace Hospital in Mitchell and at Avera McKennan Hospital in Sioux Falls.



## 2000 – 2009:

- Fall 2001: Southeast Tech received Prerequisite Status to implement the LPN Program in the fall semester.
- May 2002: Huron University (Si Tanka University at Huron) will close its Associate Degree Program following graduation of its last class of students in May 2002.
- 2002: Presentation College offers the Associate Degree Program on the main campus as well as the off-campus site in Eagle Butte, South Dakota.
- May 2002: The Associate Degree Program at Si Tanka University at Huron officially closed.
- May 2003: Board of Nursing approval was withdrawn for the Associate Degree Nursing Program at Sisseton Wahpeton College effective May 31, 2003.
- July 2003: Interim Approval was granted for LPN Programs at Sisseton Wahpeton College and Sinte Gleska University.
- November 2003: Full Approval Status was granted to LPN Program at Southeast Tech.
- January 2004: Approved expansion for articulation agreement between Presentation College with Southeast Tech in Sioux Falls, Lake Area Technical Institute in Watertown, and Western Dakota Tech in Rapid City for BSN Completion Program for LPNs. Nursing courses begin Fall 2004 for LPN-BSN and will begin Spring 2005 for RN-BSN.
- January 2004: Southeast Technical Institute granted approval for reorganization to expand the LPN Program in Yankton.
- July 2004: Sisseton Wahpeton College was granted Prerequisite Status to begin a new LPN-RN Associate Degree Program.
- November 2004: Dakota Wesleyan University received approval for reorganization to develop a one-year LPN to RN curriculum to be offered at Southeast Tech in Sioux Falls.
- December 2004: South Dakota Board of Regents approved the SDSU PhD in Nursing Program.
- February 2005: Colorado Technical University was granted Prerequisite Status for an RN/BSN completion program.
- April 2005: Colorado Technical University RN/BSN completion program granted Interim Status.
- May 2005: Dakota Wesleyan University granted approval of Proposal for Reorganization of the Nursing Education Programs to offer a satellite program in Huron.
- July 2005: Full Approval granted to the Sisseton Wahpeton College LPN Program when 75% successful NCLEX® Pass Rate is met.
- May 1, 2005: Voluntary Closing of Si Tanka University Nursing Program accepted.
- September 2005: Granted Interim Status to Sinte Gleska University LPN Nursing Program.
- November 2005: Granted Dakota Wesleyan University Prerequisite Status for RN-BAN completion program.
- April 2006: Granted National American University University Interim Status pending completion of a successful on-site visit for Distance RN-BSN Completion Program.
- September 2006: National American University University placed on Probation Status for noncompliance with ARSD 20:48:07:38.
- September 2006: Sisseton Wahpeton College College granted Interim Status for LPN-RN nursing program.
- November 2006: Western Dakota Tech Practical Nursing Program was returned to Full Approval Status.
- November 2006: National American University University RN-BSN distance program was granted Interim Status.
- November 2006: Granted Interim Status for Dakota Wesleyan University RN-BAN Distance Learning program.
- February 2007: Oglala Lakota College College AD Program placed on Probationary status.
- June 2008: Granted Full Approval Status for National American University University RN-BSN Completion Program.
- September 2008: Sinte Gleska University University LPN Nursing Program placed on Probationary Status.
- November 2008: Granted Full Approval Status to Dakota Wesleyan University RN-BAN Online Completion Program.
- January 2009: University of Sioux Falls approved for Prerequisite Status of the Bachelor of Science in Nursing Program, accelerated eight-semester and RN-BSN options.

- April 2009: Presentation College BSN and ADN Nursing Education Programs placed on Probationary Status for two years.
- September 2009: University of Sioux Falls approved for Interim Status of the Accelerated Baccalaureate of Science in Nursing Program with an eight-semester and RN-BSN options.
- November 2009: National American University University granted Interim Approval Status for a generic BSN program.

2010 – 2014:

- February 2010: SGU to remain on Probationary Status with follow-up site visit.
- April 2009: SWC granted Full Approval Status of the PN program and continued Interim Approval Status of the RN program.
- April 2009: Presentation College AD and BSN nursing programs granted continued Probationary Status.
- April 2009: Presentation College approved for reorganization to offer AD courses on main campus.
- June 2010: MMC granted approval for Prerequisite Status for LPN Program.
- September 2010: USD granted Prerequisite Status for RN to BSN Completion Program.
- September 2010: MMC approved for Interim Status for a Licensed Practical Nurse Program.
- January 2011: MMC began first cohort of LPN Program.
- June 2011: NAU granted approval for Request for Reorganization to add Sioux Falls campus.
- June 2011: SWC approved for LPN-RN Online program.
- September 2011: USD began first cohort of RN-BSN students.
- September 2011: STI granted Interim Status for LPN-RN (Associate of Applied Science) Program.
- November 2011: WDT University placed on Probationary Status.
- February 2012: USD generic baccalaureate program granted Prerequisite Status.
- February 2012: SDSU approved for reorganization to offer accelerated BSN option in Aberdeen.
- April 2012: SWC LPN and LPN-RN programs placed on Probationary Status.
- July 2012: OLC was granted continued Full status after the site visit report was presented and accepted.
- September 2012: STI granted continued full approval for the LPN program and continued Interim status for the LPN-AAS program after the site visit report was presented and accepted.
- November 2012: The Board approved the request for reorganization for NAU, designating one Program Chair over both Sioux Falls and Rapid City sites.

- February 2013: MMC Practical Nursing program granted continued Interim Status.
- February 2013: USD generic baccalaureate program granted Interim Status.
- May 2013: SWC continued Probationary Status, with permission to admit 16 students to the PN program for Fall 2013.
- May 2013: USF baccalaureate program granted Full Status.
- September 2013: WDT Notice of intent to withdraw program approval.
- November 2013: SGU Notice of intent to withdraw program approval.
- January 2014: DWU generic baccalaureate program granted Prerequisite Status.
- January 2014: Board approved request for reorganization for STI PN program to add an online cohort.
- March 2014: Board voted to withdraw the intent of involuntary closure and to continue Probationary Status for the PN program at WDT.
- March 2014: Board accepted site visit report and approved continued Interim Status for the NAU baccalaureate program.
- June 2014: Board approved request for reorganization for Augustana to offer an accelerated baccalaureate program.
- November 2014: Board moved that NAU generic baccalaureate program be noticed for no longer meeting nursing program administrator requirements pursuant to ARSD 20:48:07:22 and that a plan of compliance be submitted prior to the next Board meeting.
- November 2014: Board granted motion to accept the site visit report and for continued Probationary Status for the SWC PN program.