



Department of Transportation
Division of Planning/Engineering
Right of Way Program
700 E Broadway Avenue
Pierre, South Dakota 57501-2586
605/773-3746 FAX: 605/773-4249

February 13, 2017

Mike Behm,
Director of Planning and Engineering
Department of Transportation
Pierre, South Dakota 57501

RE: February 26, 2017 Transportation Commission Agenda

Dear Mr. Behm:

The following items are recommended for Commission consideration:

1. Transfer – Lincoln County

This resolution will complete a portion of the requirements of Agreement #910586 signed by the city of Sioux Falls and the State of South Dakota, through its Department of Transportation, on June 2, 2005 and Amendment 1 signed by the city of Sioux Falls and the State of South Dakota on November 27, 2013, of a portion of the segment of South Dakota Highway 115 (Minnesota Avenue) from 85th Street South to 72nd Street North. This agreement states that that portion of South Dakota Highway 115 from 85th Street South to 72nd Street North would be transferred to the City of Sioux Falls and the City of Sioux Falls would accept ownership, jurisdiction and maintenance responsibilities. This transfer will complete the transfer of South Dakota Highway 115 from 85th Street South to 57th Street South. (See attached layout)

2. Disposal of Excess Property – Pennington County

Request Transportation Commission approval to dispose of the following DOT property in accordance with the procedures provided by SDCL 31-2-27 and ARSD chapter 10:02:01.

Lot 620 of Scenic Conata Basin in the NW1/4 of Section 11, Township 4 South, Range 16 East of the B.H.M., Pennington County, South Dakota, less Lot H1.

Appraised Value: \$1

The property contains 0.09 acre of sloping pasture land. Location is on the north side of Hwy 44 in a remote area of Pennington County.

The property has no developed utilities and no access will be allowed from Hwy 44.

Rapid City Area DOT advises the property is not needed for future department use. (See attached layout)

3. Abandonment – Beadle County

This resolution will abandon the temporary easements on Beadle County Project P 0028(35)297, PCN 03A2.

4. Abandonment – Brookings County

This resolution will abandon the temporary easements on Brookings County Project NH 014B(04)418, PCN 035U.

5. Abandonment – Grant County

This resolution will abandon the temporary easements on Grant County Project NH 0012(151)389, PCN 028T.

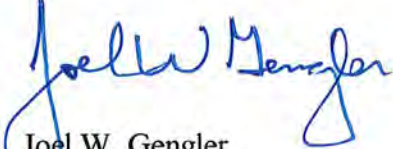
6. Abandonment – Lawrence County

This resolution will abandon the temporary easements on Lawrence County Project P 0085(72)23, PCN 028L.

7. Abandonment – Pennington County

This resolution will abandon the temporary easements on Pennington County Project HES 2016(04)70, PCN 3115.

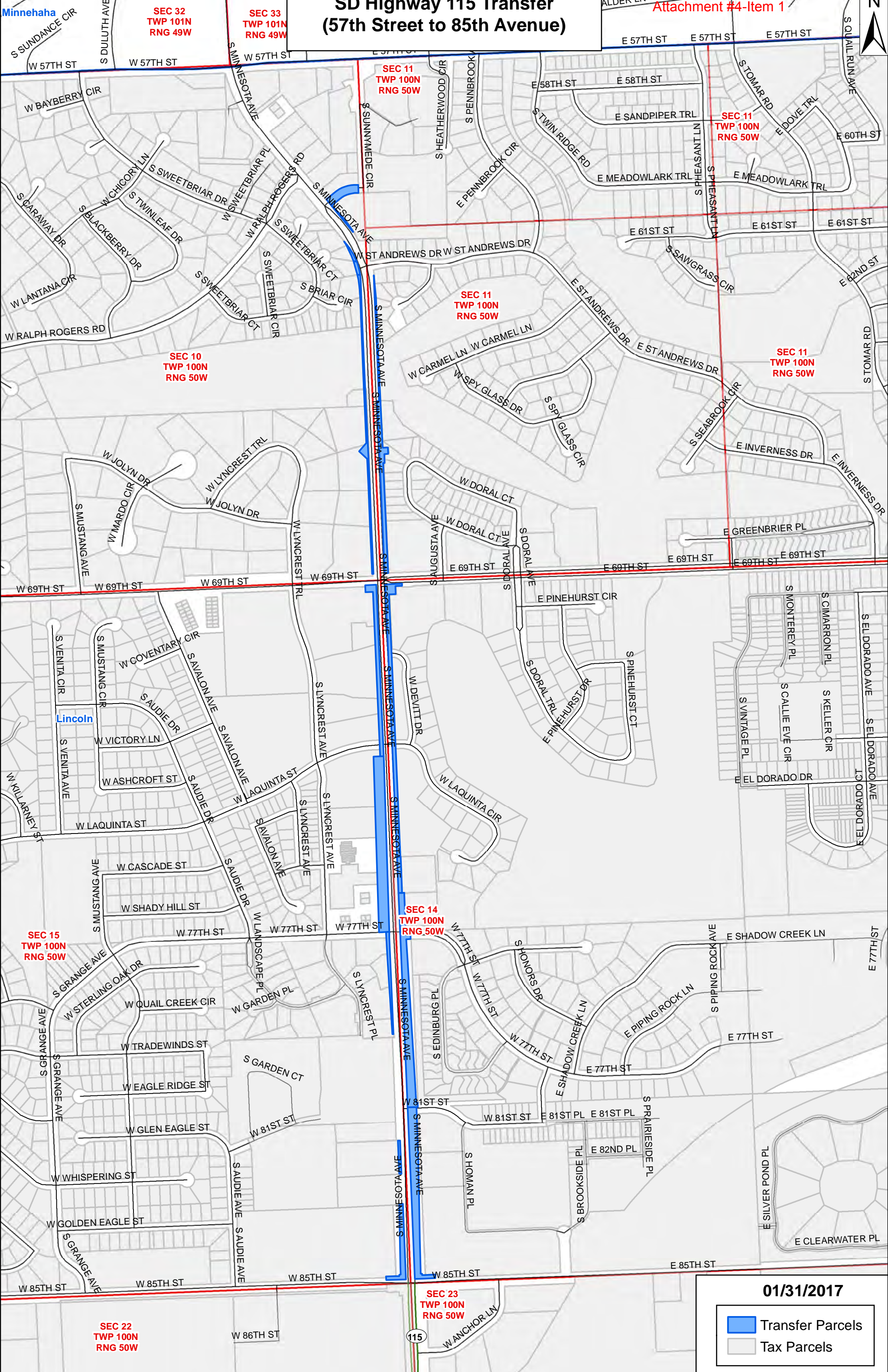
Sincerely,



Joel W. Gengler,
Right of Way Program Manager

SD Highway 115 Transfer (57th Street to 85th Avenue)

Attachment #4-Item 1



Minnehaha

SEC 32
TWP 101N
RNG 49W

SEC 33
TWP 101N
RNG 49W

SEC 11
TWP 100N
RNG 50W

SEC 11
TWP 100N
RNG 50W

SEC 10
TWP 100N
RNG 50W

SEC 11
TWP 100N
RNG 50W

SEC 11
TWP 100N
RNG 50W



SEC 14
TWP 100N
RNG 50W

SEC 15
TWP 100N
RNG 50W

SEC 22
TWP 100N
RNG 50W

SEC 23
TWP 100N
RNG 50W

01/31/2017

-  Transfer Parcels
-  Tax Parcels

115

Excess Parcel - 4-52-10

Attachment #4-Item 2

SEC 2
TWP 4S
RNG 16E

SEC 11
TWP 4S
RNG 16E

SD HWY 44

44

Pennington Tax Parcels

Excess Land

- <all other values>
- <Null>
- Pending Disposal
- Retain
- Sold/Traded

Source: Esri, DigitalGlobe, GeoEye, Earthstar Geographics, CNES/Airbus DS, USDA, USGS, AEX, Getmapping, Aerogrid, IGN, IGP, swisstopo, and the GIS User Community