



Department of Transportation
Division of Planning/Engineering
Right of Way Program
 700 E Broadway Avenue
 Pierre, South Dakota 57501-2586
 605/773-3746 FAX: 605/773-4249

May 16, 2017

Mike Behm,
 Director of Planning and Engineering
 Department of Transportation
 Pierre, South Dakota 57501

RE: May 25, 2017 Transportation Commission Agenda

Dear Mr. Behm:

The following items are recommended for Commission consideration:

1. Abandonment – in Pennington County

Request Transportation Commission approval to abandon portions of South Dakota Highway 240. This resolution will abandon the following property acquired for highway right-of-way:

Lot A, lying East of Lot H2 in the NE1/4 of Section 7 - Township 1 South –
 Range 16 East of the B.H.M. & within Lot B in the NE1/4, Pennington County,
 South Dakota.

Location is south of Wall on the east side of Hwy 240: Project P-PH 0240(12)128,
 PCN 038D has been completed and recorded Lot PE1 will allow future access across
 Lot A.

The above property is no longer needed for highway purposes and abandonment is
 recommended by DOT Rapid City Area. (See attachments)

2. Abandonment – Fall River County

This resolution will abandon the temporary easements on Fall River County Project
 NH 018B(01)38, PCN 01C2.

Sincerely,

Joel W. Gengler,
 Right of Way Program Manager

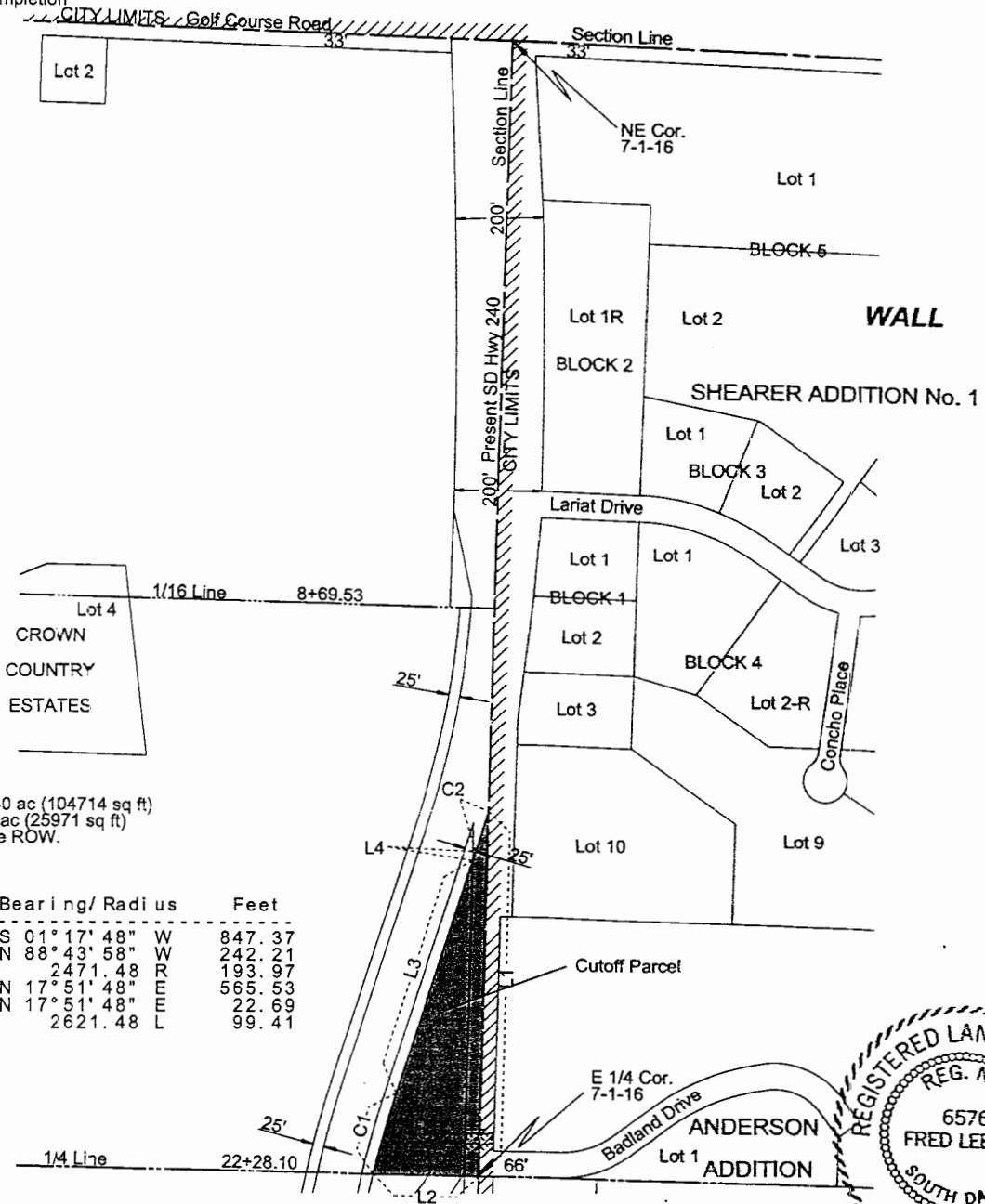
PLAT OF LOT A

Showing a parcel of land in the cutoff parcel, lying East of Lot H2 in the NE 1/4 of Section 7 - Township 1 South - Range 16 East of the B.H.M. & within Lot B in the NE 1/4

PENNINGTON COUNTY, SOUTH DAKOTA

Scale: 1 inch = 300 feet

LEGEND
 ● = found corner
 ● = set corner
 All monumentation will be set upon project completion



Lot A containing 2.40 ac (104714 sq ft) of which 0.60 ac (25971 sq ft) is Section Line ROW.

Note: The coordinates, distances and areas shown on this plat are based on the South Dakota State Plane coordinate System - South Zone NAD 83/96 SF = 0.99978245

Revised 02/19/2014 KLH

Drawn By Kimberly L. Herman Date 04/10/2014
 Checked By Consultant Date 12/16/2013



SURVEYOR'S CERTIFICATE

I, Fred Leetch, Registered Land Surveyor, in and for the State of South Dakota, do hereby certify that as ordered by the South Dakota Department of Transportation the parcel of land as shown on this plat has been surveyed at my direction and under my control, and such parcel of land shall be hereafter known by the lot number designated herein. The location and dimensions of the parcel are shown on this plat.

In witness whereof, I have set my hand and seal this 10th day of April, A.D., 2014.
Fred Leetch
 Registered Land Surveyor
 Registration No. 6576

OFFICE OF REGISTER OF DEEDS

State of South Dakota
 County of Pennington ss
 Filed for record the 14 day of April, A.D., 2014, at 9:18A M., and recorded in Books of Plats A20140120 on Page _____

Parcel 2B

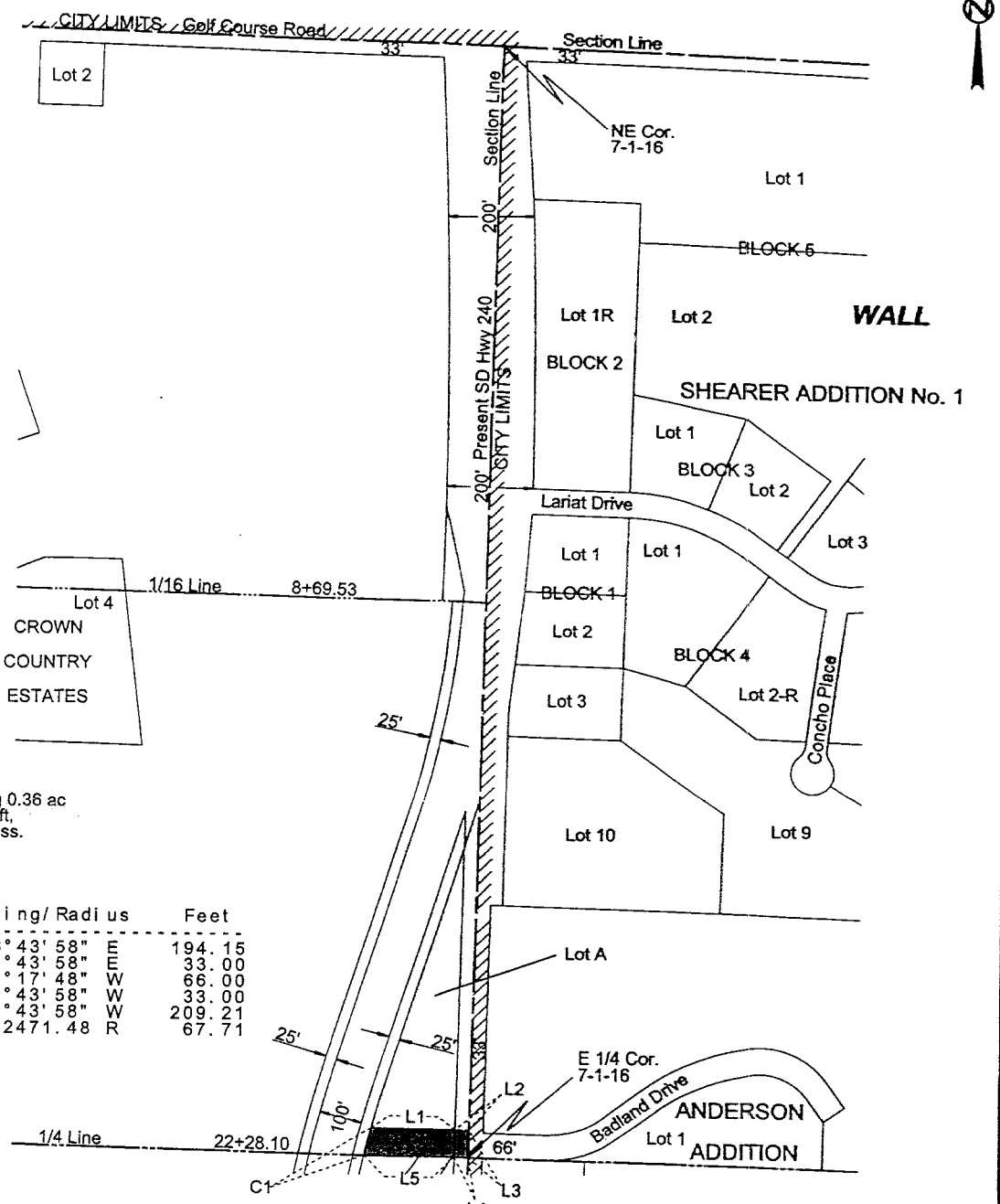
PLAT OF LOT PE1

Showing a permanent easement to be acquired for access easement in Lot A in the NE1/4 of Section 7 - Township 1 South - Range 16 East of the B.H.M. for construction of Project P-PH 0240(12)128

PENNINGTON COUNTY, SOUTH DAKOTA

Scale: 1 inch = 300 feet

LEGEND
 ● = found corner
 ● = set corner
 All monumentation will be set upon project completion



Lot PE1 containing 0.36 ac 15499 sq ft, more or less.

Line No.	Bearing/Radius	Feet
L1	S 88° 43' 58" E	194.15
L2	S 88° 43' 58" E	33.00
L3	S 01° 17' 48" W	66.00
L4	N 88° 43' 58" W	33.00
L5	N 88° 43' 58" W	209.21
C1	2471.48 R	67.71

Note: The coordinates, distances and areas shown on this plat are based on the South Dakota State Plane coordinate System - South Zone NAD 83/96 SF = 0.99978245

Revised 02/19/2014 KLH

Drawn By Kimberly L. Herrman Date 02/19/2014
 Checked By Consultant Date 12/16/2013

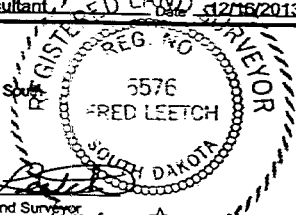
SURVEYOR'S CERTIFICATE

I, Fred Leetch, Registered Land Surveyor, in and for the State of South Dakota, do hereby certify that as ordered by the South Dakota Department of Transportation the parcel of land as shown on this plat has been surveyed at my direction and under my control, and such parcel of land shall be hereafter known by the lot number designated herein. The location and dimensions of the parcel are shown on this plat.

In witness whereof, I have set my hand and seal this

10th day of April A.D., 2014

Registered Land Surveyor
 Registration No. 6576



OFFICE OF REGISTER OF DEEDS

State of South Dakota
 County of Pennington

Filed for record the 21st day of April A.D., 2014, at 9:23 A.M., and recorded in Book of Plats 220104596 on Page 1

038D

Register of Deeds



by

Deputy



SD Highway 240



-  ROW Disposal selection 2
-  ROW Disposal selection