

**Department of Transportation**  
**Office of Legal Counsel**  
**700 East Broadway Avenue**  
**Pierre, South Dakota 57501-2586 605/773-3262**  
**FAX: 605/773-4442**

## MEMORANDUM

TO: Patricia Saukel  
FROM: Karla L. Engle  
DATE: May 19, 2017  
RE: May Commission Meeting

The Department of Transportation requests that the Transportation Commission consider approval of the amendment of the following rules:

- 70:01:02:02 – Pennington County speed zone rule
- 70:01:02:21 – Custer County speed zone rule
- 70:01:02:49 – Meade County speed zone rule

KLE  
Attachments

**CHAPTER 70:01:02****SPEED LIMITS**

**70:01:02:02. Pennington County.** The following are the maximum speeds on certain highways in Pennington County:

(1) Old U.S. Highway 16 through Rockerville between its two junctions with present U.S. Highway 16 westbound, 40 miles per hour;

(2) Repealed;

(3) State Trunk Highway 44, beginning at the intersection of Cambell Street, then 3.3 miles southeast to the intersection of Longview Drive, 45 miles per hour; then east 0.82 mile, 55 miles per hour;

(4) Repealed;

(5) Interstate Highway 90 service road beginning on the north side of Interstate Highway 90 at the intersection with the crossover road at interstate milepost 60.87, then east 3.46 miles, 45 miles per hour;

(6) The crossroad over Interstate Highway 90 at interstate milepost 60.87 beginning at the junction with Edwards Street, then north 0.25 mile, 35 miles per hour;

(7) Repealed;

(8) Repealed;

(9) Repealed;

(10) U.S. Highway 16A beginning at the junction with U.S. Highway 16, then southerly for 0.43 mile, 35 miles per hour; then southerly for 1.69 miles, 45 miles per hour; then southerly for 0.35 mile, 35 miles per hour; then southerly for 0.86 mile, 25 miles per hour, except from June 1 to August 31 of each year from Swanzy Street to Winter Street, 20 miles per hour; then south and east for 0.58 mile, 35 miles per hour; then southeasterly to the Pennington-Custer county line, including that portion of U.S. Highway 16A which loops back into Pennington County for 0.8 mile, 25 miles per hour;

(11) State Trunk Highway 240 beginning at the junction with Interstate Highway 90 in Wall, then south for 0.3 mile, 35 miles per hour; the south for 6.67 miles, 55 miles per hour;

(12) Repealed;

(13) State Highway ~~79~~ Maintenance Route 231 beginning at the intersection of West Chicago Street with Sturgis Road, then easterly for 1,200 feet, 35 miles per hour; then easterly for 4,070 feet, 50 miles per hour; then easterly to the intersection of Mt. View Road, 40 miles per hour;

(14) U.S. Highway 16 beginning at the intersection of Mt. Rushmore Road and Omaha Street, then southerly to the intersection of Mt. Rushmore Road and Kansas City Street, 25 miles per hour; then southerly to the intersection of Mt. Rushmore Road and Columbus Street, 30 miles per hour; then southerly to the intersection of Cathedral Drive, 35 miles per hour;

(15) State Trunk Highway 44 beginning at the intersection of Omaha Street and Mt. View Road, then easterly to the intersection of Omaha Street and Twelfth Street, 40 miles per hour; then easterly to the intersection of Omaha Street and LaCrosse Street, 35 miles per hour; then easterly to the intersection of Omaha Street and Cambell Street, 40 miles per hour;

(16) State Trunk Highway 87 beginning at the junction with U.S. Highway 385 to the south boundary line of Pennington County, 45 miles per hour;

(17) State ~~Trunk~~ Highway Maintenance Route 79 231 beginning at the Pennington-Meade county line, then southeast for 3.08 miles, 50 miles per hour; then southeast for 0.62 mile, 45 miles per hour; then southeast for 0.35 mile to the intersection with Chicago Street, 35 miles per hour;

(18) U.S. Highway 16 B beginning at the intersection of U.S. Highway 16 south of Rapid City, then northeasterly for 0.53 mile to Mile Reference Marker 64.72, 45 miles per hour; then northeasterly for 5.08 miles to Mile Reference Marker 69.80, 60 miles per hour; then north for 2.93 miles to Mile Reference Marker 72.73, 55 miles per hour; then north for 0.47 miles to Interstate Highway 90, 45 miles per hour;

(19) The crossroad over Interstate Highway 90 at interstate milepost 64.16 beginning at the junction of the service road on the north side of the interstate highway and extending 0.2 mile south, 35 miles per hour;

(20) U.S. Highway 385 beginning at the intersection of U.S. Highway 16 at Three Forks, then north for 16.85 miles to the Lawrence County Line, 55 miles per hour;

(21) U.S. Highway 16 and U.S. Highway 385 beginning 3.7 miles south of the junction with State Trunk Highway 244, at the Custer County line, then northerly for 3.25 miles, 60 miles per hour; then northerly to a point 0.35 mile north of the junction with State Trunk Highway 244, 45 miles per hour; then northerly for 2.42 miles, 55 miles per hour;

(22) State Trunk Highway 244 beginning at the junction with U.S. Highway 16 and 385, then easterly for 0.65 mile, 40 miles per hour; then easterly for 4.74 miles, 50 miles per hour; then easterly for 2 miles to the west entrance of the Mt. Rushmore Memorial, 40 miles per hour; then easterly for 0.57 mile, 35 miles per hour; then easterly for 1.09 miles, 25 miles per hour; then easterly for 1.34 miles to the junction with U.S. Highway 16A, 35 miles per hour;

(23) Highway 16 service road beginning at the crossover approximately 200 feet south of the Pine Lawn Memorial Cemetery south of Rapid City, then south for 2.1 miles, to the end of the service road, 35 miles per hour;

(24) U.S. Highway 16 beginning 5.72 miles east of the U.S. Highway 385 junction of Three Forks, then westerly for 5.28 miles, 55 miles per hour; then westerly for 1.54 miles through the Three Forks junction, 45 miles per hour; then westerly for 1.62 miles, 50 miles per hour;

(25) Truck speed for eastbound trucks with dual tires on the driver axle on U.S. Highway 16 beginning at a point 2 miles west of the junction with Cathedral Drive in Rapid City, then east 2 miles to the junction of Cathedral Drive, 35 miles per hour;

(26) State Trunk Highway 44 beginning at the junction with U.S. Highway 385, then easterly for 4.26 miles, 50 miles per hour; then easterly for 0.54 miles, 40 miles per hour; then

easterly for 7.72 miles, 50 miles per hour; then easterly for 0.95 miles, 45 miles per hour; then easterly for 0.47 miles, 40 miles per hour; then easterly for 3.1 miles to the intersection of Mountain View Road and Omaha Street in Rapid City, 35 miles per hour;

(27) State Trunk Highway 40 beginning 8.9 miles northwest of the south junction with State Trunk Highway 79 at Hermosa, then southeast for 2.42 miles to the Pennington-Custer county line, 55 miles per hour;

(28) Interstate Highway 90 crossover road at ~~interstate milepost 78.39 beginning 0.45 miles south of the south ramp terminals at the junction of old State Trunk Highway 14 and 16 in New Underwood~~, then north 0.08 mile, 25 miles per hour; then north 0.32 mile, 45 miles per hour; then north 0.19 mile, 40 miles per hour Exit 78 (New Underwood Road) beginning 0.07 mile south of the centerline of Interstate Highway 90, then north 0.16 mile, 45 miles per hour;

(29) Repealed;

(30) The crossroad over Interstate Highway 90 at Exit 84 (Pennington County Road 497) beginning 0.09 mile south of the centerline of Interstate Highway 90, then north 0.19 mile, 25 miles per hour;

(31) The crossroad over Interstate Highway 90 at Exit 88 (Pennington County Road 473) beginning 0.11 mile south of the centerline of Interstate Highway 90, then north 0.25 mile, 25 miles per hour;

(32) The crossroad over Interstate Highway 90 at Exit 107 (Pennington County Road 506) beginning 0.19 mile south of the centerline of Interstate Highway 90, then north 0.38 mile, 35 miles per hour;

(33) State Trunk Highway 79 beginning 500 feet south of the junction of Minnesota Avenue in Rapid City then south to the junction of State Trunk Highway 16B, 55 miles per hour; then south on State Highway 79 for 1.29 miles, 55 miles per hour;

~~—— (34) Interstate Highway 90 Maintenance Route 230 westbound in Box Elder beginning 0.6 mile east of the junction with Interstate Highway 90 Maintenance Route 435 at Exit 66 of Interstate Highway 90 (Ellsworth Air Force Base — Box Elder interchange), then west to the junction with Interstate Highway 90 Maintenance Route 435, 55 miles per hour; then west for 0.5 mile to the intersection with the Ellsworth Air Force Base Commercial Gate Road, 45 miles per hour; then west to the junction with Interstate Highway 90 at Exit 63, 55 miles per hour;~~

~~—— (35) Interstate Highway 90 Maintenance Route 230 eastbound in Box Elder beginning at the junction of Interstate Highway 90 at Exit 63, then east to a point 0.6 mile east of the junction of Interstate Highway 90 Maintenance Route 435, 55 miles per hour;~~

(36) Repealed;

(37) U.S. Highway 16 beginning at milepost 40.3 at the south edge of Hill City, then northeasterly for 0.20 mile to south junction of U.S. Highway 16 Truck Route, 35 miles per hour; then northerly for 0.55 mile to north junction of U.S. Highway 16 Truck Route, 25 miles per hour; then northeasterly for 0.53 mile, 35 miles per hour; then northeasterly for 0.44 mile, 45

miles per hour; and on U.S. Highway 16 Truck Route from south junction with U.S. Highway 16 northerly 0.6 mile to north junction with U.S. Highway 16, 35 miles per hour;

(38) U.S. Highway 16 beginning at Cathedral Drive, then southerly 0.3 mile, 35 miles per hour; then southerly for 1.35 miles, 50 miles per hour; then southerly for 4.47 miles, 60 miles per hour;

(39) State Highway 445 (Deadwood Avenue) beginning at the terminals of the west bound ramps of Interstate Highway 90 at Exit 55, then southeast for 2.3 miles to the junction with West Chicago Street, 45 miles per hour.

**Source:** SL 1975, ch 16, § 1; 1 SDR 29, effective October 6, 1974; 1 SDR 48, effective January 1, 1975; 2 SDR 29, effective October 16, 1975; 3 SDR 75, effective May 1, 1977; 4 SDR 60, effective March 26, 1978; 6 SDR 5, effective July 30, 1979; 6 SDR 85, effective February 24, 1980; 6 SDR 109, effective May 29, 1980; 7 SDR 89, effective March 30, 1981; 9 SDR 35, effective September 19, 1982; 9 SDR 76, effective December 23, 1982; 9 SDR 111, effective February 27, 1983; 9 SDR 132, effective April 24, 1983; 10 SDR 7, effective July 31, 1983; 11 SDR 62, effective November 4, 1984; 11 SDR 112, effective February 25, 1985; 11 SDR 156, effective May 26, 1985; 12 SDR 138, effective February 23, 1986; 12 SDR 174, effective May 5, 1986; 13 SDR 52, effective November 6, 1986; 13 SDR 129, 13 SDR 134, effective July 1, 1987; 14 SDR 111, effective February 28, 1988; 16 SDR 88, effective November 12, 1989; 16 SDR 102, effective December 20, 1989; 16 SDR 152, effective March 28, 1990; 17 SDR 34, effective September 9, 1990; 17 SDR 62, effective November 5, 1990; 17 SDR 82, effective December 20, 1990; 17 SDR 127, effective March 3, 1991; 17 SDR 151, effective April 8, 1991; 18 SDR 78, effective November 4, 1991; 22 SDR 165, effective June 2,



1996; 22 SDR 183, effective June 30, 1996; 24 SDR 132, effective April 5, 1998; 25 SDR 108, effective March 1, 1999; 27 SDR 15, effective August 30, 2000; 30 SDR 89, effective December 7, 2003; 32 SDR 183, effective May 10, 2006; 33 SDR 125, effective January 29, 2007; 34 SDR 279, effective May 8, 2008; 40 SDR 58, effective October 9, 2013.

**General Authority:** SDCL [32-25-7](#).

**Law Implemented:** SDCL [32-25-7](#).

**70:01:02:21. Custer County.** The following are the maximum speeds on certain highways in Custer County:

(1) State Trunk Highway 36 beginning at the junction of U.S. Highway 16A near the east gate of Custer State Park, then northeasterly for 0.7 mile, 35 miles per hour; then northeasterly for 8.51 miles to the State Trunk Highway 79 junction, 50 miles per hour;

(2) U.S. Highway 16 beginning 1.08 miles west of the junction with U.S. Highway 385 in the city of Custer, then east for 0.3 mile, 45 miles per hour; then east for 0.78 mile to the junction with U.S. Highway 385, 35 miles per hour;

(3) U.S. Highway 16A beginning at the junction with U.S. Highway 16-385 in Custer, then easterly for 0.37 mile, 25 miles per hour; then easterly for 0.25 mile, 35 miles per hour; then easterly for 0.49 mile, 45 miles per hour; then easterly for 2.8 miles to the west border of Custer State Park, 55 miles per hour;

(4) U.S. Highway 16A commencing at the Pennington-Custer county line, then southeasterly along a circuitous route in Custer County to a point 2.9 miles northwest of the

north boundary of Custer State Park, 25 miles per hour; then southeasterly for 2.9 miles to the north boundary of Custer State Park, 35 miles per hour;

(5) U.S. Highway 16A and State Trunk Highway 87 within the boundary of Custer State Park, 35 miles per hour;

(6) State Trunk Highway 89 beginning at the junction with State Highway 87 near Sylvan Lake, then south 3.8 miles, 35 miles per hour, then south to the junction with U.S. Highway 16A near Custer, 45 miles per hour;

~~(7) U.S. Highway 385 and State Trunk Highway 87 beginning at the north entrance to Wind Cave National Park on State Trunk Highway 87, then south to the junction of State Trunk Highway 87 and U.S. Highway 385, then south on State Trunk Highway 87 and U.S. Highway 385 to a point 0.4 mile north of the Visitor Center, 45 miles per hour; then south 0.8 mile, 25 miles per hour; then south to the south entrance, 45 miles per hour; and from the west entrance of Wind Cave National Park on U.S. Highway 385 to the junction with State Trunk Highway 87, within the boundaries of Wind Cave National Park, 45 miles per hour;~~

(8) State Trunk Highway 40 beginning at the north junction of State Trunk Highway 79 at the west edge of Hermosa, then east for 0.7 mile, 35 miles per hour; then east for 0.2 mile, 50 miles per hour;

(9) State Trunk Highway 87 beginning at the north boundary line of Custer County to the west boundary of Custer State Park, 45 miles per hour;

(10) U.S. Highway 385 and State Trunk Highway 89 beginning at the junction with U.S. Highway 16 in Custer, then south for 0.2 mile, 35 miles per hour, then south for 0.23 mile, 45 miles per hour;

(11) U.S. Highway 385 beginning 0.3 mile north of the junction with State Trunk Highway 89 by Pringle, then south and east 6.37 miles, 45 miles per hour;

(12) U.S. Highway 16 and U.S. Highway 385 beginning at the junction of U.S. Highway 16 and 385 in the west part of the city of Custer, then easterly to the intersection of Fifth Street, 25 miles per hour; then northerly for 0.5 mile, 25 miles per hour; then northerly for 0.5 mile, 35 miles per hour; then north for 0.2 mile, 45 miles per hour; then northerly for 5.91 miles to the Pennington County line, 60 miles per hour;

(13) State Trunk Highway 40 beginning at the Pennington-Custer county line, then southeast for 6.48 miles, 55 miles per hour;

(14) U.S. Highway 16 beginning 11.5 miles east of the South Dakota-Wyoming border, then easterly for 3.5 miles, 35 miles per hour;

(15) State Trunk Highway 79 beginning at the Fall River County line, then north to a point 0.50 mile south of the junction with State Trunk Highway 36, 70 miles per hour for those segments of highway which are four lane divided sections; then north for 1.25 miles, 65 miles per hour; then north for 0.90 mile through Hermosa, 55 miles per hour; then north to the Pennington County line, 65 miles per hour.

(16) State Trunk Highway 87 within the boundaries of the Wind Cave National Park, 35 miles per hour.

**Source:** SL 1975, ch 16, § 1; 7 SDR 100, effective April 27, 1981; 11 SDR 22, effective August 12, 1984; 13 SDR 52, effective November 6, 1986; 13 SDR 129, 13 SDR 134, effective July 1, 1987; 16 SDR 152, effective March 28, 1990; 21 SDR 171, effective April 2, 1995; 22 SDR 165, effective June 2, 1996; 23 SDR 132, effective February 27, 1997; 27 SDR 15, effective August 30, 2000; 32 SDR 109, effective December 26, 2005; 36 SDR 163, effective May 3, 2010; 40 SDR 58, effective October 9, 2013; 43 SDR 87, effective December 13, 2016.

**General Authority:** SDCL 32-25-7, 32-25-7.1.

**Law Implemented:** SDCL 32-25-7, 32-25-7.1.

**70:01:02:49. Meade County.** The following are the maximum speeds on certain highways in Meade County:

(1) State Trunk Highway 34 beginning 0.3 mile east of the southeast corner of section 8, township 7 north, range 13 east of the Black Hills meridian in Enning and ending 0.2 mile west of that corner, 45 miles per hour;

(2) State Trunk Highway 34 beginning at the northeast corner of section 21, township 7, range 12 east of the Black Hills meridian near Union Center, then west for 0.5 mile, 45 miles per hour;

(3) State Trunk Highway 34 beginning at its junction with Interstate Highway 90 on the west edge of Sturgis, then easterly to its intersection with Blanche Street, 35 miles per hour; then

easterly for 2.3 miles, 45 miles per hour. However, from the Thursday preceding the first full weekend in August to the Sunday of the second full weekend in August, inclusive, of each year from Blanche Street easterly for 3.8 miles, 35 miles per hour;

(4) U.S. Highway 212 beginning 0.2 mile west of the junction of U.S. Highway 212 and State Trunk Highway 73 at the west edge of Faith, then east for 0.20 mile, 45 miles per hour; then east for 0.20 mile, 35 miles per hour; then east for 0.31 mile, 25 miles per hour; then east for 0.12 mile, 35 miles per hour; then east for 0.15 mile, 45 miles per hour;

(5) Interstate Highway 90 service road (Black Hawk Road) on the west side of Interstate Highway 90 beginning at the junction with Interstate Highway 90 Maintenance Route 231 located 0.25 mile north of the Pennington-Meade county line, then north to the junction with Peaceful Pines Road, 35 miles per hour;

(6) Transferred to subdivision (5) of this section;

(7) Repealed;

(8) State Trunk Highway 73 beginning 0.49 mile south of the junction of State Trunk Highway 73 and U.S. Highway 212 at the west edge of Faith, then north for 0.27 mile, 45 miles per hour; then north for 0.22 mile, 35 miles per hour;

(9) Interstate Highway 90, eastbound lane off-ramp into the Tilford Port of Entry, beginning 600 feet north of the scale and ending 600 feet south of the scale, 20 miles per hour;

(10) U.S. Highway 14A beginning at the junction with Interstate Highway 90 in Sturgis, then west for 0.4 mile, 35 miles per hour; then west for 3.64 miles, 45 miles per hour;

(11) The crossroad over Interstate Highway 90 at Exist 37 (Meade County Road 8) beginning 0.1 mile southwesterly of the centerline of Interstate Highway 90, then northeasterly 0.25 mile, 25 miles per hour;

(12) The crossroad over Interstate Highway 90 at Exit 46 (Meade County Road 4) beginning at the intersection with the service road 0.08 mile west of the centerline of Interstate Highway 90, then east 0.16 mile, 15 miles per hour;

(13) State ~~Trunk~~ Highway 79 Maintenance Route 231 beginning at the north Pennington County line, then ~~northerly~~ north 1.05 mile to Interstate Highway 90 at Exit 51 Peaceful Pines Road, 55 miles per hour, then east 0.6 mile to Norman Avenue, 45 miles per hour;

(14) Interstate Highway 90 Service Road on the west side of Interstate Highway 90 beginning at Exit 40, then southeasterly to Exit 44, ~~55~~ 45 miles per hour;

(15) From the Thursday preceding the first full weekend in August to the Sunday of the second full weekend in August, inclusive, of each year, State Trunk Highway 79 beginning at the junction of State Trunk Highway 34 east of Sturgis, then north for 1.75 miles, 45 miles per hour;

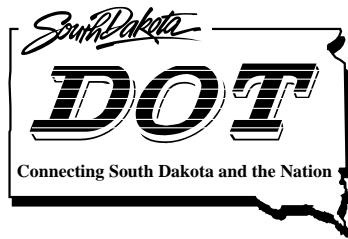
(16) Interstate Highway 90 service road (Sturgis Road) on the west side of Interstate Highway 90 beginning at Peaceful Pines Road, then north 0.62 mile, 55 miles per hour; then north 5.2 miles to the crossroad over Interstate Highway 90 at Exit 46, 45 miles per hour; then northwest to the junction with the Exit 44 crossroad, 35 miles per hour;

(17) Interstate Highway 90 spur road (Captain Soelzer Street) on the west side of Sturgis Road beginning at Peaceful Pines Road, then north 0.96 mile, 35 miles per hour.

**Source:** SL 1975, ch 16, § 1; 7 SDR 25, effective September 22, 1980; 9 SDR 35, effective September 19, 1982; 9 SDR 76, effective December 23, 1982; 9 SDR 132, effective April 24, 1983; 10 SDR 93, effective March 5, 1984; 11 SDR 62, effective November 4, 1984; 11 SDR 112, effective February 25, 1985; 12 SDR 44, effective September 23, 1985; subdivision (10) transferred from subdivision 70:01:02:09(3), 13 SDR 129, 13 SDR 134, effective July 1, 1987; 15 SDR 142, effective March 26, 1989; 16 SDR 169, effective April 25, 1990; 17 SDR 127, effective March 3, 1991; 18 SDR 107, effective December 29, 1991; 22 SDR 165, effective June 2, 1996; 28 SDR 181, effective July 4, 2002; 31 SDR 26, effective September 6, 2004; 35 SDR 61, effective September 22, 2008; 36 SDR 44, effective September 30, 2009; 40 SDR 58, effective October 9, 2013; 41 SDR 217, effective June 29, 2015; 42 SDR 174, effective June 23, 2016.

**General Authority:** SDCL 32-25-7.

**Law Implemented:** SDCL 32-25-7.



**Department of Transportation**  
**Rapid City Office**  
**PO Box 1970**  
**Rapid City, South Dakota 57709**  
**PHONE: 605/394-2244**  
**FAX: 605/394-1904**

DATE: April 12, 2017

TO: Christina Bennett  
Operations Traffic Engineer

FROM: Jon Suomala  
Rapid City Region Traffic Engineer

SUBJECT: Proposed Speed Limit Administrative Rule Change in Pennington County

Attached for the Transportation Commission's consideration is a speed limit administrative rule change on State Highway 79, Interstate Highway 90 crossover road at interstate milepost 78.39 and Interstate Highway 90 Maintenance Route 230. All of these routes are in Pennington County.

EXISTING RULES:

**70:01:02:02. Pennington County.** The following are the maximum speeds on certain highways in Pennington County:

(13) State Highway 79 beginning at the intersection of West Chicago Street with Sturgis Road, then easterly for 1,200 feet, 35 miles per hour; then easterly for 4,070 feet, 50 miles per hour; then easterly to the intersection of Mt. View Road, 40 miles per hour;

(17) State Trunk Highway 79 beginning at the Pennington-Meade county line, then southeast for 3.08 miles, 50 miles per hour; then southeast for 0.62 mile, 45 miles per hour; then southeast for 0.35 mile to the intersection with Chicago Street, 35 miles per hour;

(28) Interstate Highway 90 crossover road at interstate milepost 78.39 beginning 0.45 miles south of the south ramp terminals at the junction of old State Trunk Highway 14 and 16 in New Underwood, then north 0.08 mile, 25 miles per hour; then north 0.32 mile, 45 miles per hour; then north 0.19 mile, 40 miles per hour;

(34) Interstate Highway 90 Maintenance Route 230 westbound in Box Elder beginning 0.6 mile east of the junction with Interstate Highway 90 Maintenance Route 435 at Exit 66 of Interstate Highway 90 (Ellsworth Air Force Base - Box Elder interchange), then west to the junction with Interstate Highway 90 Maintenance Route 435, 55 miles per hour; then west for 0.5 mile to the intersection with the Ellsworth Air Force Base Commercial Gate Road, 45 miles per hour; then west to the junction with Interstate Highway 90 at Exit 63, 55 miles per hour;



(35) Interstate Highway 90 Maintenance Route 230 eastbound in Box Elder beginning at the junction of Interstate Highway 90 at Exit 63, then east to a point 0.6 mile east of the junction of Interstate Highway 90 Maintenance Route 435, 55 miles per hour;

AMENDED RULE:

**70:01:02:02. Pennington County.** The following are the maximum speeds on certain highways in Pennington County:

(13) State Highway Maintenance Route 231 ~~79~~ beginning at the intersection of West Chicago Street with Sturgis Road, then easterly for 1,200 feet, 35 miles per hour; then easterly for 4,070 feet, 50 miles per hour; then easterly to the intersection of Mt. View Road, 40 miles per hour;

(17) State ~~Trunk~~ Highway Maintenance Route 231 ~~79~~ beginning at the Pennington-Meade county line, then southeast for 3.08 miles, 50 miles per hour; then southeast for 0.62 mile, 45 miles per hour; then southeast for 0.35 mile to the intersection with Chicago Street, 35 miles per hour;

(28) Interstate Highway 90 crossover road at Exit 78 (New Underwood Road) beginning 0.07 mile south of the centerline of Interstate highway 90, then north 0.16 mile, 45 miles per hour; interstate milepost 78.39 beginning 0.45 miles south of the south ramp terminals at the junction of old State Trunk Highway 14 and 16 in New Underwood, then north 0.08 mile, 25 miles per hour; then north 0.32 mile, 45 miles per hour; then north 0.19 mile, 40 miles per hour;

REPEALED RULE:

The following rules need to be repealed. These roadways were transferred to Pennington County in Agreement 711217 and are no longer maintained by the South Dakota Department of Transportation.

**70:01:02:02. Pennington County.** The following are the maximum speeds on certain highways in Pennington County:

(34) Interstate Highway 90 Maintenance Route 230 westbound in Box Elder beginning 0.6 mile east of the junction with Interstate Highway 90 Maintenance Route 435 at Exit 66 of Interstate Highway 90 (Ellsworth Air Force Base - Box Elder interchange), then west to the junction with Interstate Highway 90 Maintenance Route 435, 55 miles per hour; then west for 0.5 mile to the intersection with the Ellsworth Air Force Base Commercial Gate Road, 45 miles per hour; then west to the junction with Interstate Highway 90 at Exit 63, 55 miles per hour;

(35) Interstate Highway 90 Maintenance Route 230 eastbound in Box Elder beginning at the junction of Interstate Highway 90 at Exit 63, then east to a point 0.6 mile east of the junction of Interstate Highway 90 Maintenance Route 435, 55 miles per hour;

COST

The estimated cost to make the necessary signing changes, if this proposal is approved, is as follows:

There is no cost associated with these changes, except for the proposed change to ARSD 70:01:02:02 (28), where the cost to DOT is as follows: Installation of three sign faces at the cost of \$50 per sign face, plus 31.5 feet of sign post at a cost of \$20 per foot = \$780.

INFORMATION REGARDING PROPOSED  
SPEED LIMIT ADMINISTRATIVE RULE CHANGES

DATE: April 12, 2017

LOCATION:

Highways

State Highway 79 (now State Highway Maintenance Route 231)  
Interstate Highway 90 crossover road at interstate milepost 78.39  
Interstate Highway 90 Maintenance Route 230

County

Pennington County

EFFECTS OF THE CHANGES:

1. Amend Existing Rule 70:01:02:02:13
2. Amend Existing Rule 70:01:02:02:17
3. Amend Existing Rule 70:01:02:02:28
4. Repeal Existing Rule 70:01:02:02:34
5. Repeal Existing Rule 70:01:02:02:35

PURPOSE OF THE CHANGES:

The proposed amendment of existing rules 70:01:02:02:13 and 70:01:02:02:14 are to change the State Highway name in the rules from State Highway 79 to State Highway Maintenance Route 231.

The proposed amendment of existing rule 70:01:02:02:28 removes a portion of the roadway that was transferred to Pennington County in Agreement 711217.

The proposed repeal of existing rules 70:01:02:02:34 and 70:01:02:02:35 is a result of Agreement 711217 that transferred responsibility of these roadways to Pennington County.

WHY THE CHANGES ARE RECOMMENDED:

After the construction of the Heartland Expressway and the construction replacement of Exit 51 with Exit 52 on I-90, the South Dakota Department of Transportation changed the routing of SD79 so that it paralleled the Heartland Expressway and I-90 instead of going through Rapid City and connecting with I-90 at old Exit 51. A portion of the old SD 79 was renamed State Highway Maintenance Route 231. The proposed changes to 70:01:02:02:13 and 70:01:02:02:14 reflect the changes to the roadway designation.

Agreement 711217 transferred the maintenance responsibility of several roadways from the South Dakota Department of Transportation to Pennington County. The proposed amendment to 70:01:02:02:28 and the repeal of 70:01:02:02:34 and 70:01:02:02:35 reflect the changes based on that agreement.

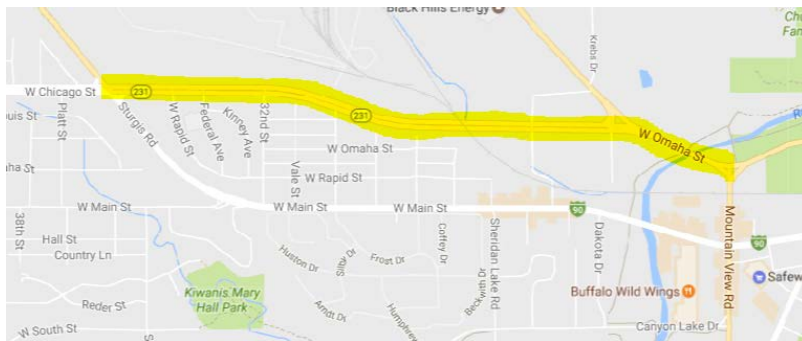
### WHO INITIATED THE CHANGE:

The SDDOT Rapid City Region staff recommended the proposed changes. These changes are necessary due to changing the State Highway designation of a roadway and transferring maintenance responsibilities to Pennington County.

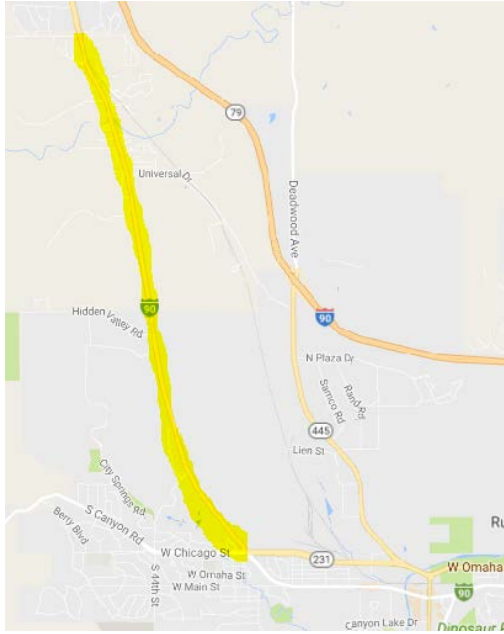
Captain Jason Ketterling, South Dakota Highway Patrol, is in support of these changes.

### MAPS

(13) State Highway Maintenance Route 231 ~~79~~ beginning at the intersection of West Chicago Street with Sturgis Road, then easterly for 1,200 feet, 35 miles per hour; then easterly for 4,070 feet, 50 miles per hour; then easterly to the intersection of Mt. View Road, 40 miles per hour;

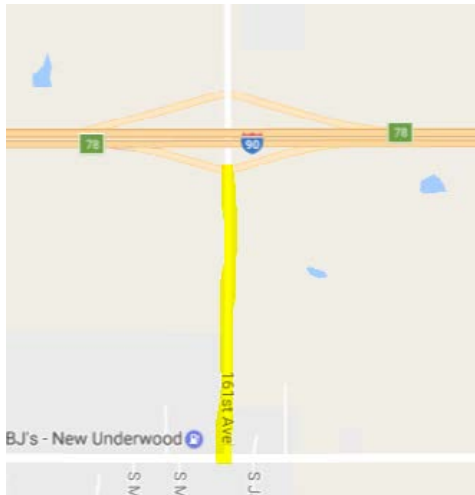


(17) State ~~Trunk~~ Highway Maintenance Route 231 ~~79~~ beginning at the Pennington-Meade county line, then southeast for 3.08 miles, 50 miles per hour; then southeast for 0.62 mile, 45 miles per hour; then southeast for 0.35 mile to the intersection with Chicago Street, 35 miles per hour;



(28) Interstate Highway 90 crossover road at Exit 78 (New Underwood Road) beginning 0.07 south of the centerline of Interstate highway 90, then north 0.16 mile, 45 miles per hour; ~~interstate milepost 78.39 beginning 0.45 miles south of the south ramp terminals at the junction of old State Trunk Highway 14 and 16 in New Underwood, then north 0.08 mile, 25 miles per hour; then north 0.32 mile, 45 miles per hour; then north 0.19 mile, 40 miles per hour;~~

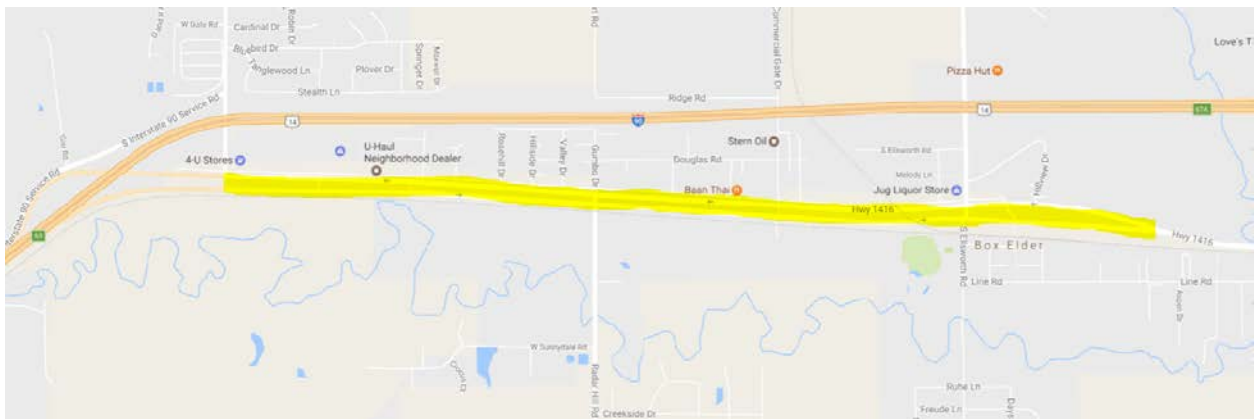
Yellow highlighted portion was transferred to Pennington County

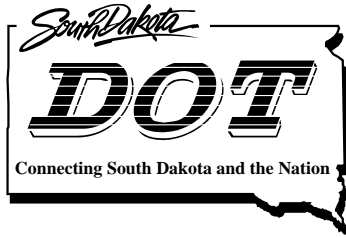


The roadway highlighted in yellow was transferred to Pennington County.

(34) Interstate Highway 90 Maintenance Route 230 westbound in Box Elder beginning 0.6 mile east of the junction with Interstate Highway 90 Maintenance Route 435 at Exit 66 of Interstate Highway 90 (Ellsworth Air Force Base - Box Elder interchange), then west to the junction with Interstate Highway 90 Maintenance Route 435, 55 miles per hour; then west for 0.5 mile to the intersection with the Ellsworth Air Force Base Commercial Gate Road, 45 miles per hour; then west to the junction with Interstate Highway 90 at Exit 63, 55 miles per hour;

(35) Interstate Highway 90 Maintenance Route 230 eastbound in Box Elder beginning at the junction of Interstate Highway 90 at Exit 63, then east to a point 0.6 mile east of the junction of Interstate Highway 90 Maintenance Route 435, 55 miles per hour;





**Department of Transportation**  
**Rapid City Office**  
**PO Box 1970**  
**Rapid City, South Dakota 57709**  
**PHONE: 605/394-2244**  
**FAX: 605/394-1904**

DATE: April 12, 2017

TO: Christina Bennett  
Operations Traffic Engineer

FROM: Jon Suomala  
Rapid City Region Traffic Engineer

SUBJECT: Proposed Speed Limit Administrative Rule Change  
US 385 and SD 87

Attached for the Transportation Commission's consideration is a speed limit administrative rule change on US 385 and SD 87 through Wind Cave National Park.

EXISTING RULE:

**70:01:02:21. Custer County.** The following are the maximum speeds on certain highways in Custer County:

(7) U.S. Highway 385 and State Trunk Highway 87 beginning at the north entrance to Wind Cave National Park on State Trunk Highway 87, then south to the junction of State Trunk Highway 87 and U.S. Highway 385, then south on State Trunk Highway 87 and U.S. Highway 385 to a point 0.4 mile north of the Visitor Center, 45 miles per hour; then south 0.8 mile, 25 miles per hour; then south to the south entrance, 45 miles per hour; and from the west entrance of Wind Cave National Park on U.S. Highway 385 to the junction with State Trunk Highway 87, 45 miles per hour;

AMENDED RULE:

**70:01:02:21. Custer County.** The following are the maximum speeds on certain highways in Custer County:

~~(7) U.S. Highway 385 and State Trunk Highway 87 beginning at the north entrance to Wind Cave National Park on State Trunk Highway 87, then south to the junction of State Trunk Highway 87 and U.S. Highway 385, then south on State Trunk Highway 87 and U.S. Highway 385 to a point 0.4 mile north of the Visitor Center, 45 miles per hour; then south 0.8 mile, 25 miles per hour; then south to the south entrance, 45 miles per hour; and from the west entrance of~~



~~Wind Cave National Park on U.S. Highway 385 to the junction with State Trunk Highway 87, 45 miles per hour; U.S. Highway 385 within the boundary of Wind Cave National Park, 45 miles per hour;~~

NEW RULE:

**70:01:02:21. Custer County.** The following are the maximum speeds on certain highways in Custer County:

(16) State Trunk Highway 87 within the boundary of Wind Cave National Park, 35 miles per hour;

COST

The estimated cost to make the necessary signing changes, if this proposal is approved, is as follows:

There is no cost associated with these changes. These changes reflect what is currently in the field.

INFORMATION REGARDING PROPOSED  
SPEED LIMIT ADMINISTRATIVE RULE CHANGES

DATE: April 12, 2017

LOCATION:

1. US 385 and SD 87
2. Wind Cave National Park
3. Custer County

EFFECTS OF THE CHANGES:

1. Amend Existing Rule **70:01:02:21. Custer County:**

PURPOSE OF THE CHANGES:

At one time US 385 went in front of the visitor center at Wind Cave National Park, and at that time the speed limit in front of the Visitor Center was 25 mph. US 385 was realigned and no longer passes in front of the visitor center. The amended rule changes the speed limit of US 385 through Wind Cave National Park to 45 mph, consistent with the existing conditions. The current rule shows SD 87 with a speed limit of 45 mph throughout Wind Cave National Park. SD 87 is a two lane winding scenic road and is currently posted at 35 mph which is inconsistent with the current rule. Due to the nature of the roadway and the fact that it is in a National Park, 35 mph is a more appropriate speed limit. SD 87 also runs through Custer State Park and is posted at 35 mph throughout Custer State Park.

WHY THE CHANGES ARE RECOMMENDED:

This change is recommended based on discussions with Wind Cave National Park and existing conditions.

WHO INITIATED THE CHANGE:

The SDDOT Rapid City Region staff recommended the proposed changes. This change reflects what is currently in place today.

Captain Jason Ketterling, South Dakota Highway Patrol, is in support of the proposed speed rule.

INVOLVEMENT WITH OTHER GOVERNING AGENCIES

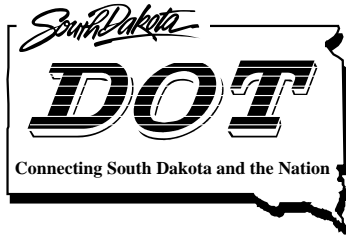
Davila Vidal from Wind Cave National Park concurs with the recommended speed limit. At one time the State Highway went in front of the visitor center. This rule should have been changed when the road was realigned.

Existing Rule  
SD 87 and US 385 in blue – 45 mph  
US 385 in yellow (old road) – 25 mph



Proposed Rule  
SD 87 in pink – 35 mph  
US 385 in blue – 45 mph





**Department of Transportation**  
**Rapid City Office**  
**PO Box 1970**  
**Rapid City, South Dakota 57709**  
**PHONE: 605/394-2244**  
**FAX: 605/394-1904**

DATE: April 12, 2017

TO: Christina Bennett  
Operations Traffic Engineer

FROM: Jon Suomala  
Rapid City Region Traffic Engineer

SUBJECT: Proposed Speed Limit Administrative Rule Change  
SD 79 and Interstate Highway 90 Service Road

Attached for the Transportation Commission's consideration is a speed limit administrative rule change on SD 79 and Interstate Highway 90 Service Road in Meade County.

EXISTING RULE:

**70:01:02:49. Meade County.** The following are the maximum speeds on certain highways in Meade County:

(13) State Trunk Highway 79 beginning at the north Pennington County line, then northerly to Interstate Highway 90 at Exit 51, 55 miles per hour;

(14) Interstate Highway 90 Service Road on the west side of Interstate Highway 90 beginning at Exit 40, then southeasterly to Exit 44, 55 miles per hour;

AMENDED RULE:

**70:01:02:49. Meade County.** The following are the maximum speeds on certain highways in Meade County:

(13) State ~~Trunk~~ Highway Maintenance Route 23179 beginning at the north Pennington County line, then northerly 1.05 mile to Interstate Highway 90 at Exit 51 Peaceful Pines Road, 55 miles per hour, then east 0.6 mile to Norman Avenue, 45 miles per hour;

(14) Interstate Highway 90 Service Road on the west side of Interstate Highway 90 beginning at Exit 40, then southeasterly to Exit 44, ~~55~~ 45 miles per hour;

COST

The estimated cost to make the necessary signing changes, if this proposal is approved, is as follows:

There is no cost associated with these changes. These changes reflect what is currently in the field after construction projects.

INFORMATION REGARDING PROPOSED  
SPEED LIMIT ADMINISTRATIVE RULE CHANGES

DATE: April 12, 2017

LOCATION:

SD 79 and Interstate Highway 90 Service Road between Exit 40 and 44 in Meade County.

EFFECTS OF THE CHANGES:

1. Amend Existing Rule **70:01:02:49. Meade County:**

PURPOSE OF THE CHANGES:

The proposed amendment of existing rule 70:01:02:49:13 is to change the State Highway name in the rule from State Highway 79 to State Highway Maintenance Route 231 and to change the description based on changes to the roadway network due to the construction of Exit 52.

The proposed amendment of existing rule 70:01:02:49:14 is to change the speed limit of the newly constructed I-90 service road between Exit 40 and Exit 44 from 55 mph to 45 mph.

WHY THE CHANGES ARE RECOMMENDED:

After the construction of the Heartland Expressway and the construction replacement of Exit 51 with Exit 52 on I-90, the South Dakota Department of Transportation changed the routing of SD79 so that it paralleled the Heartland Expressway and I-90 instead of going through Rapid City and connecting with I-90 at old Exit 51. A portion of the old SD 79 was renamed State Highway Maintenance Route 231. The proposed change to 70:01:02:49:13 reflect the changes to the roadway designation and the changes to the roadway network with the construction of Exit 52 and removal of Exit 51.

WHO INITIATED THE CHANGE:

The SDDOT Rapid City Region staff recommended the proposed changes. These changes are necessary due to changing the State Highway designation of a roadway and the changes in roadway configuration due to construction projects.

Captain Jason Ketterling, South Dakota Highway Patrol, is in support of these changes.

SPEED STUDY:

A speed study was done on the new I-90 service road between Exit 40 and Exit 44 on October 13, 2016.

Speed Study Results:

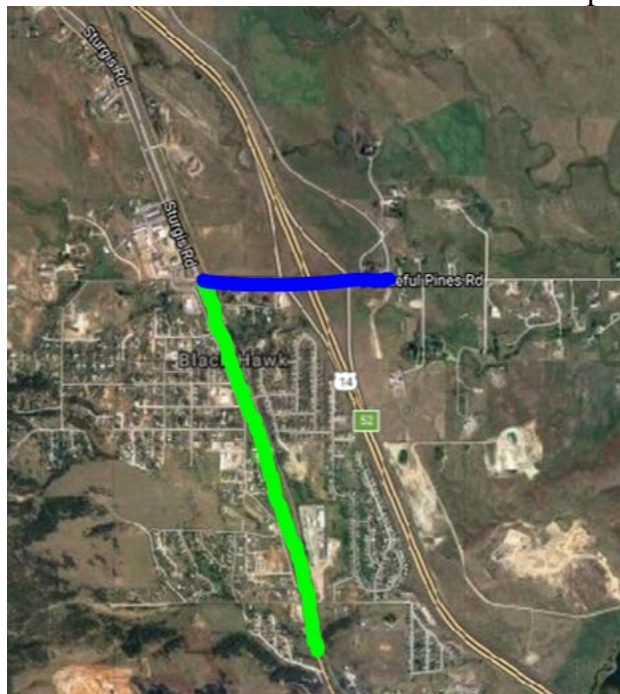
NUMBER OF VEHICLES CHECKED					49	
AVERAGE SPEED IN MPH					48.1	
PERCENT EXCEEDING THE SPEED LIMIT					73.5%	
PERCENT EXCEEDING THE SPEED LIMIT BY MORE THAN 5 MPH					24.5%	
PERCENT EXCEEDING THE SPEED LIMIT BY MORE THAN 10 MPH					4.1%	
85 PERCENTILE SPEED					<b>52</b>	
TEN MILE PACE					46	TO 55
PERCENT WITHIN THE PACE					71.5%	
MEDIAN SPEED					46	
FASTEST SPEED RECORDED					62	
SLOWEST SPEED RECORDED					38	



Existing Rule 70:01:02:49:13  
SD 79 (231) in green – 55 mph



Proposed Rule 70:01:02:49:13  
SD 79 (231) in green – 55 mph  
State Maintenance Route 231 in blue – 45 mph



Existing Rule 70:01:02:49:14  
I-90 Service Road between Exit 40 and Exit 44 in green – 55 mph



Proposed Rule 70:01:02:49:14  
New I-90 Service Road between Exit 40 and Exit 44 in blue – 45 mph

